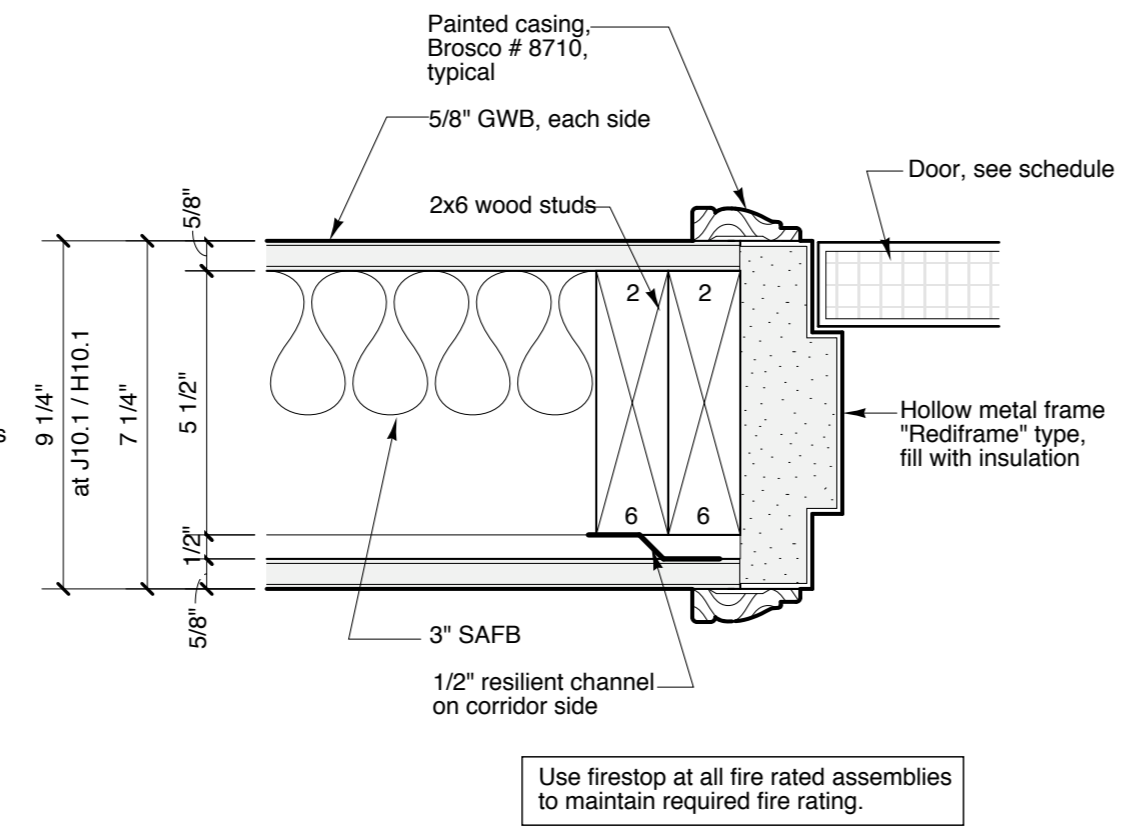
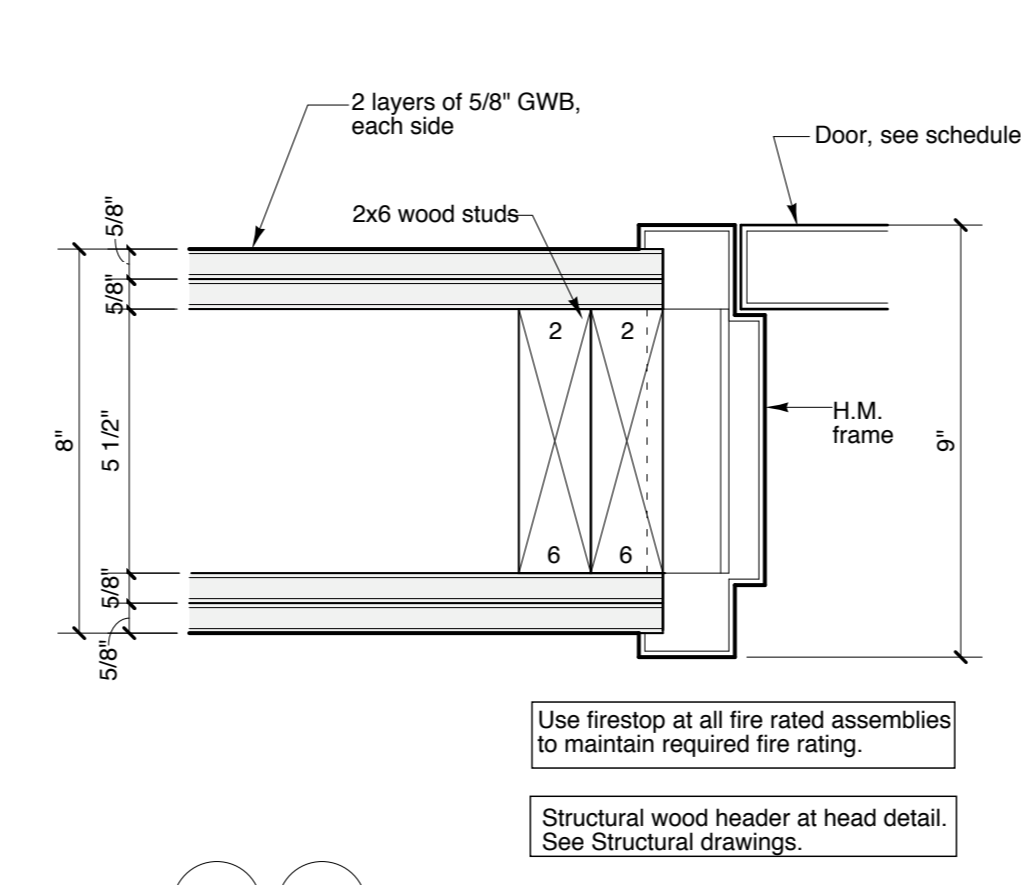


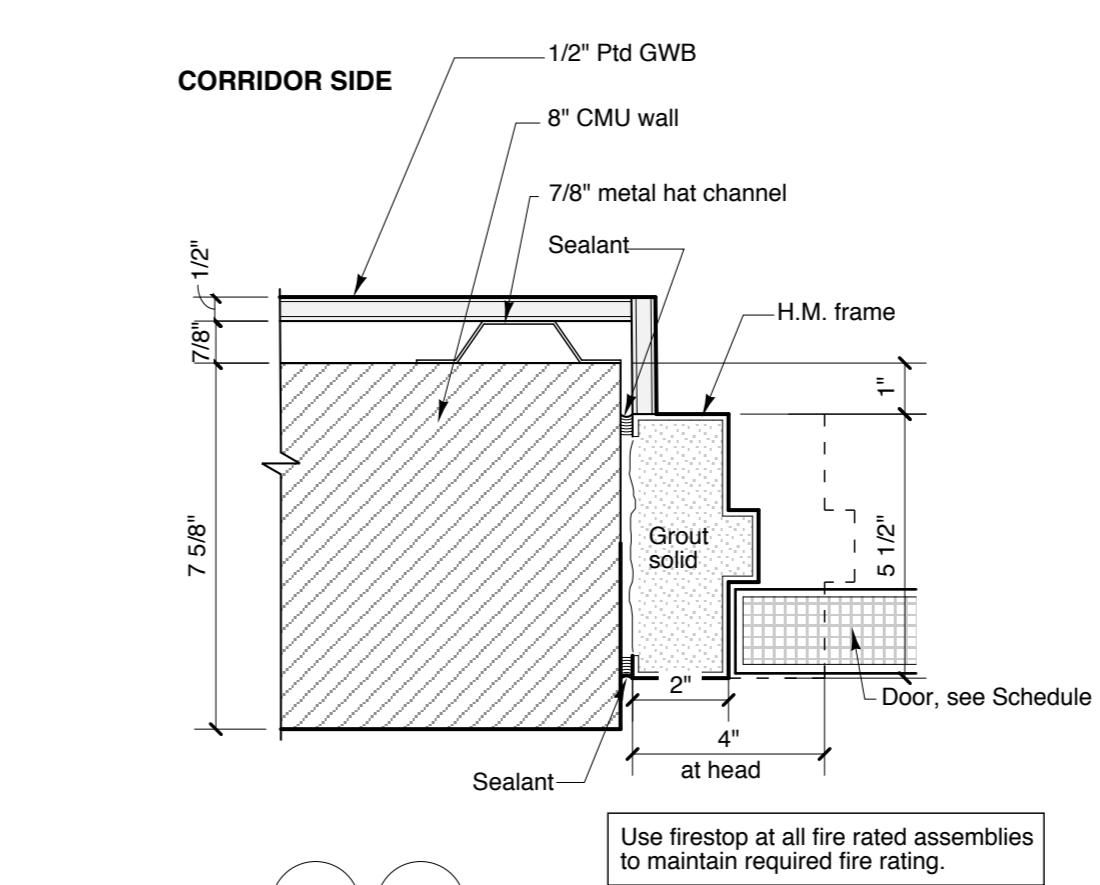
T6 TYP. INTERIOR TRANSITION STRIP **T10** TRANSITION STRIP



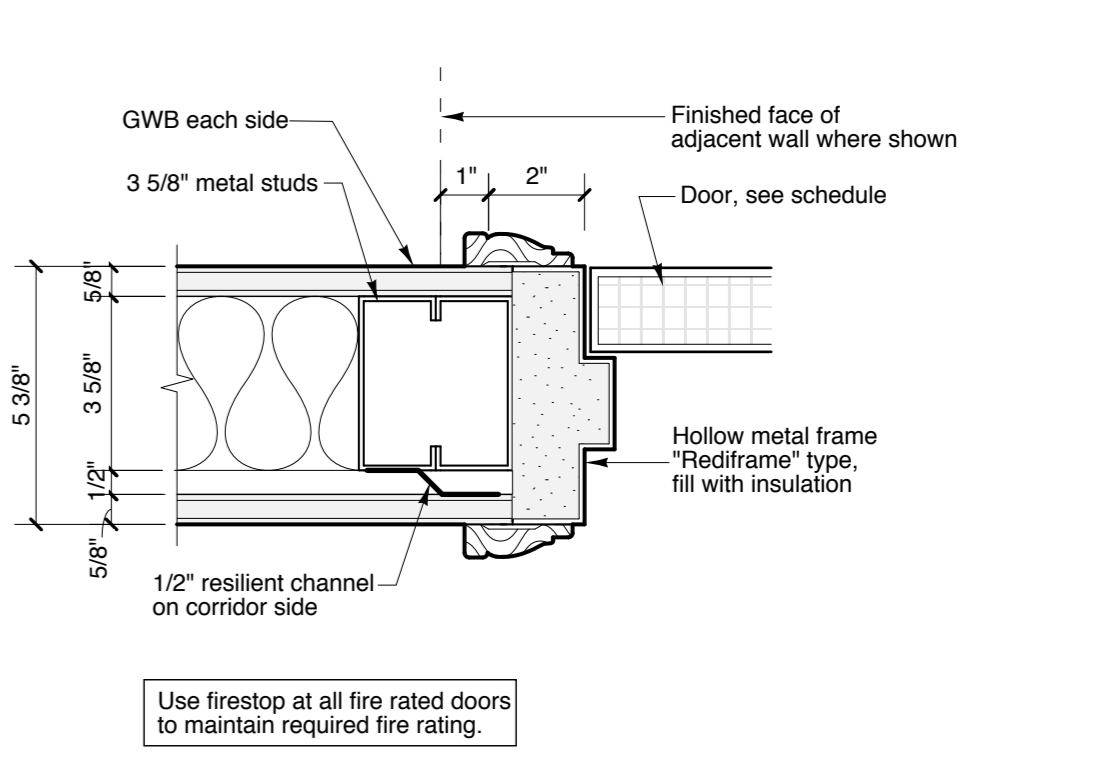
J10 H10 JAMB DETAIL / HEAD (SIM.) AT "REDIFRAME"
J10.1 H10.1 ADD 2" FURRING ON UNIT SIDE



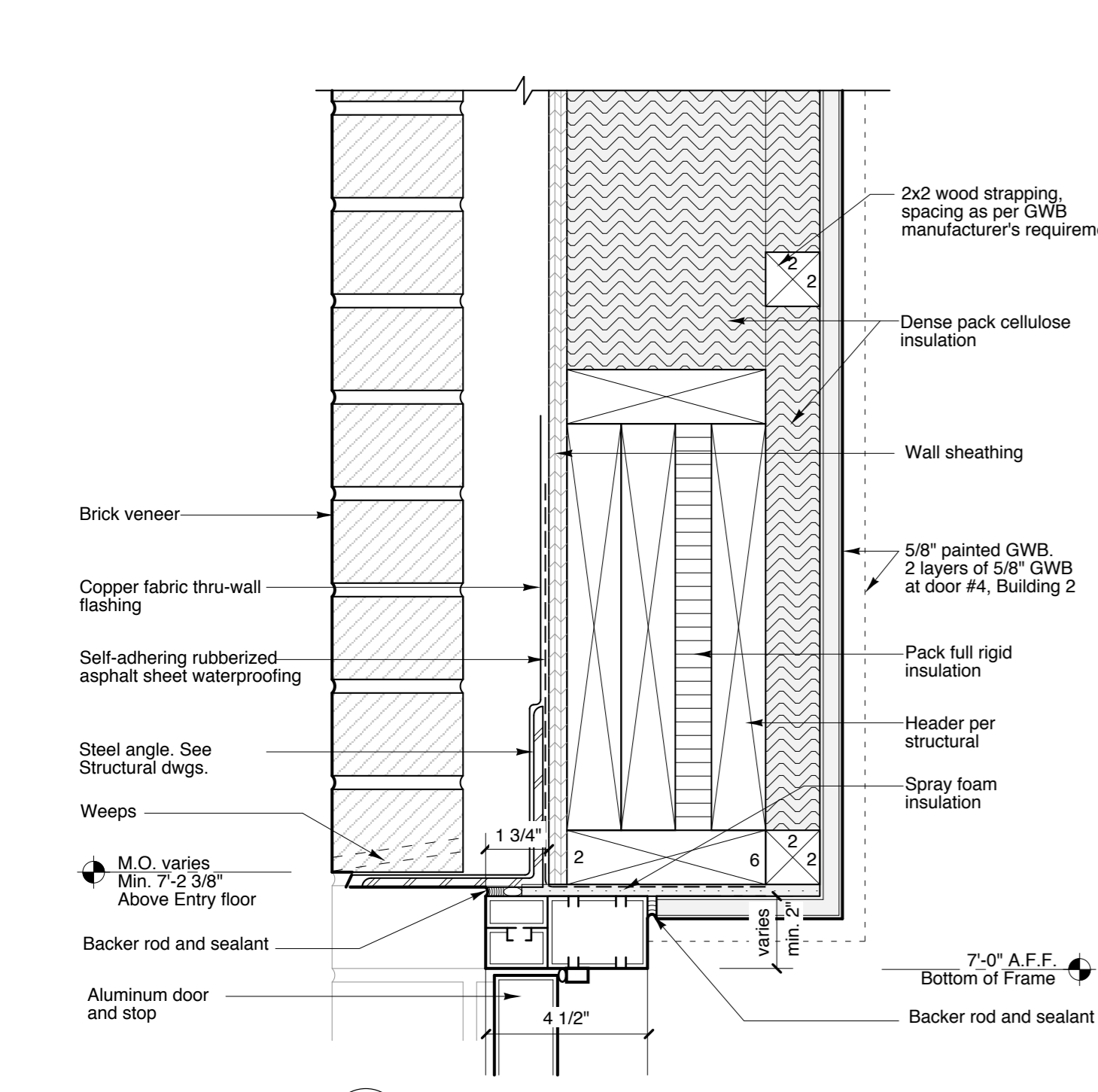
J12 H12 JAMB DETAIL / HEAD SIMILAR



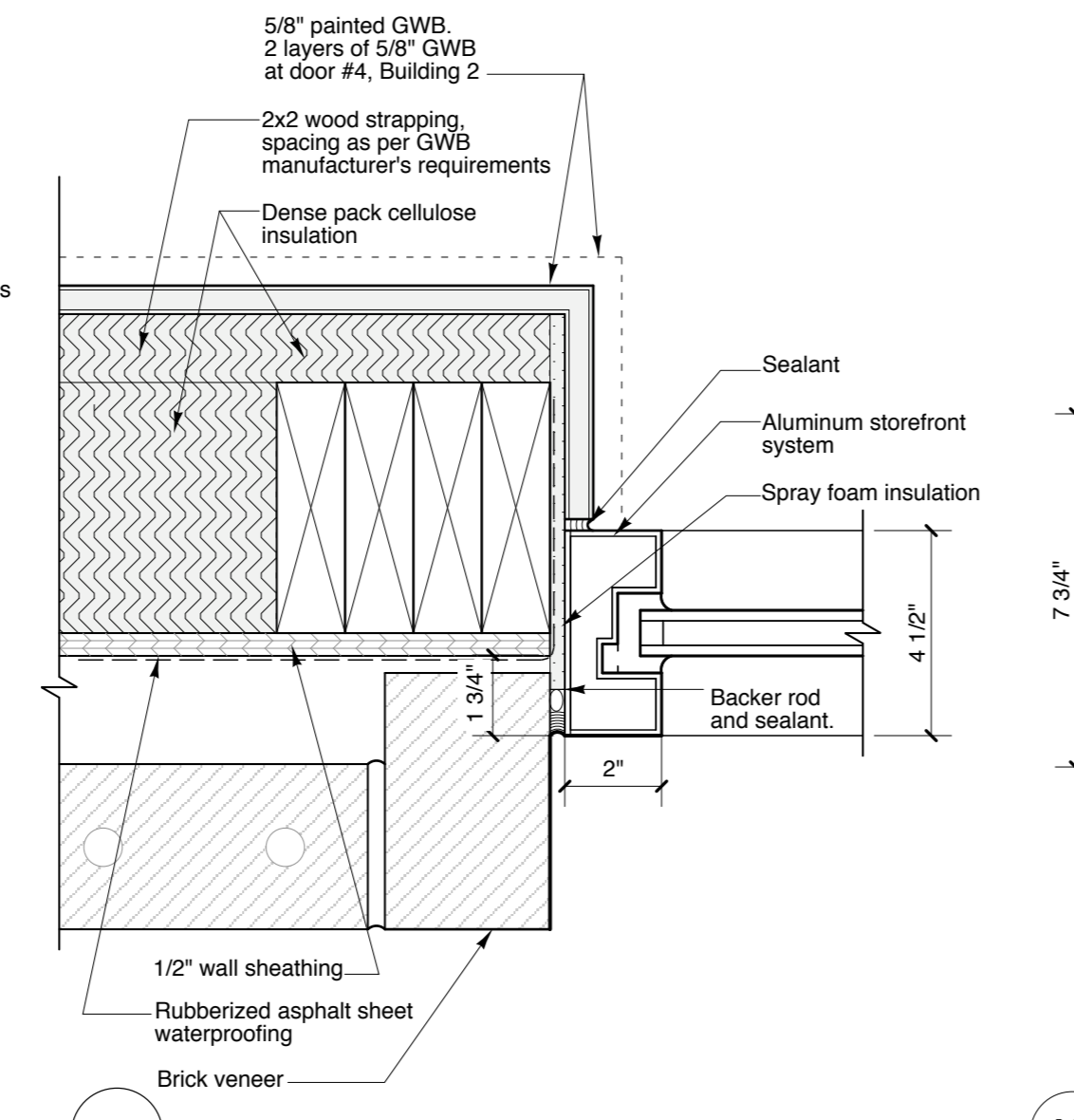
J13 H13 JAMB DETAIL / HEAD SIMILAR



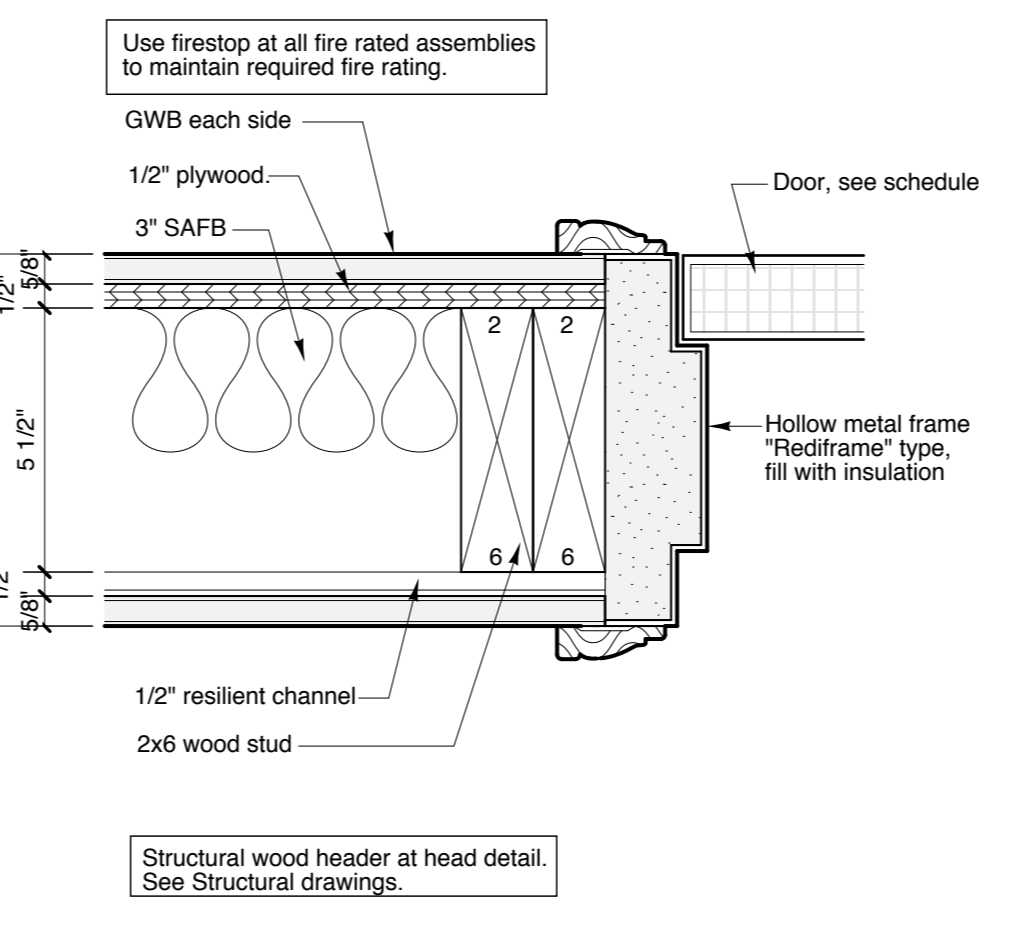
H15 J15 JAMB DETAIL / HEAD (SIM.) AT "REDIFRAME"



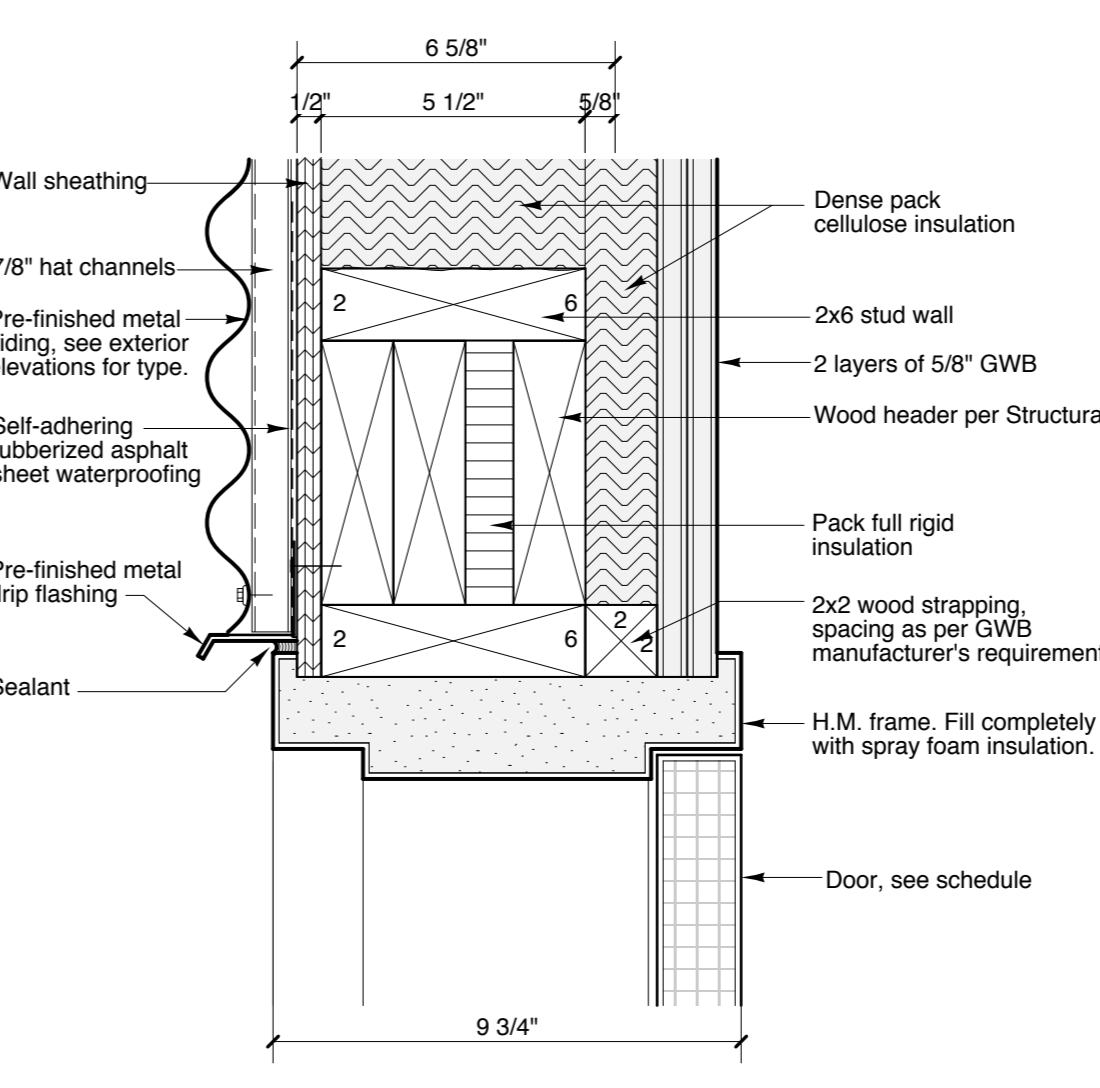
H11 HEAD DETAIL AT STOREFRONT - BUILDING 2



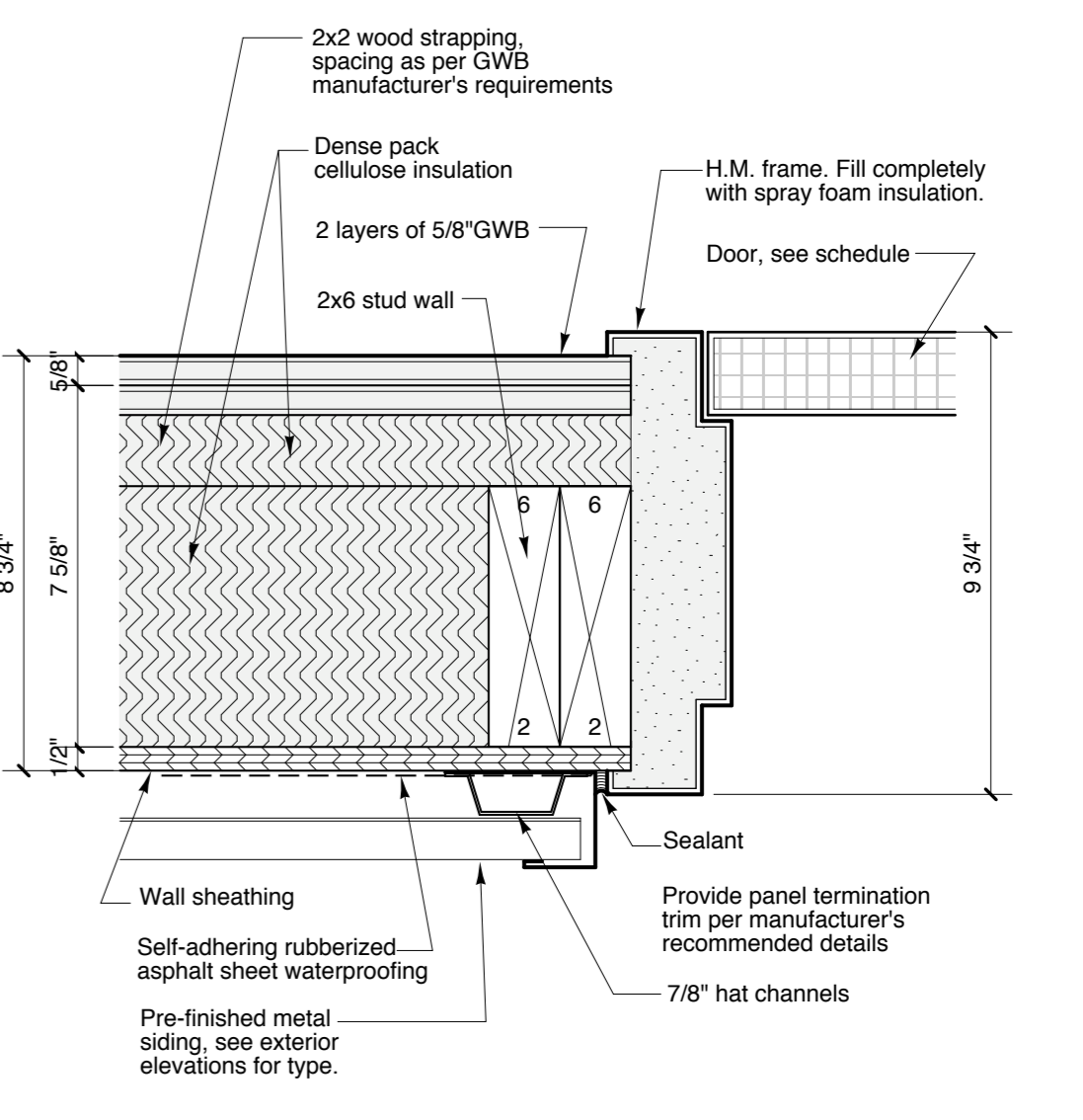
J11 JAMB DETAIL AT STOREFRONT - BUILDING 2



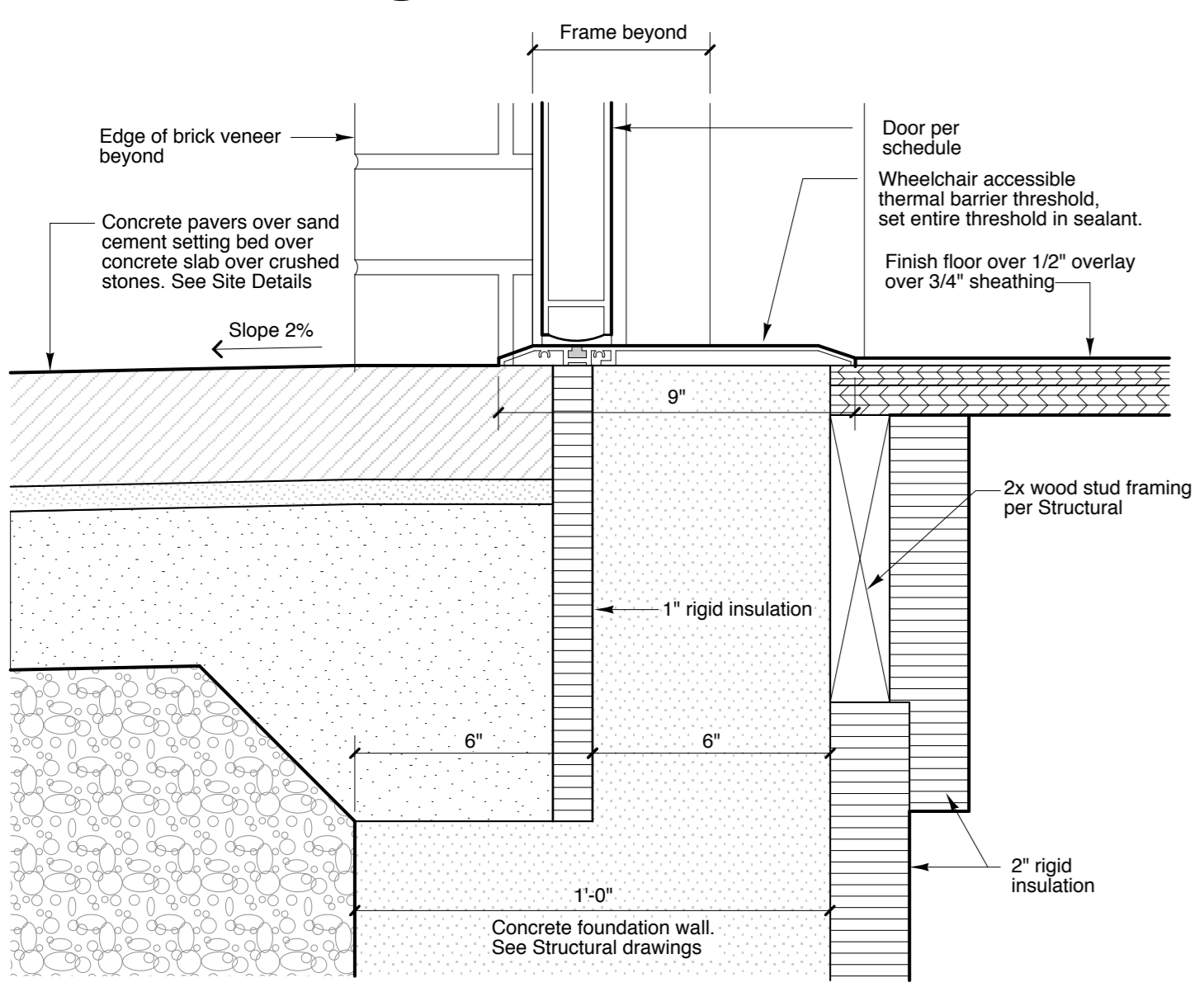
J16 H16 JAMB DETAIL / HEAD (SIM.) AT "REDIFRAME"



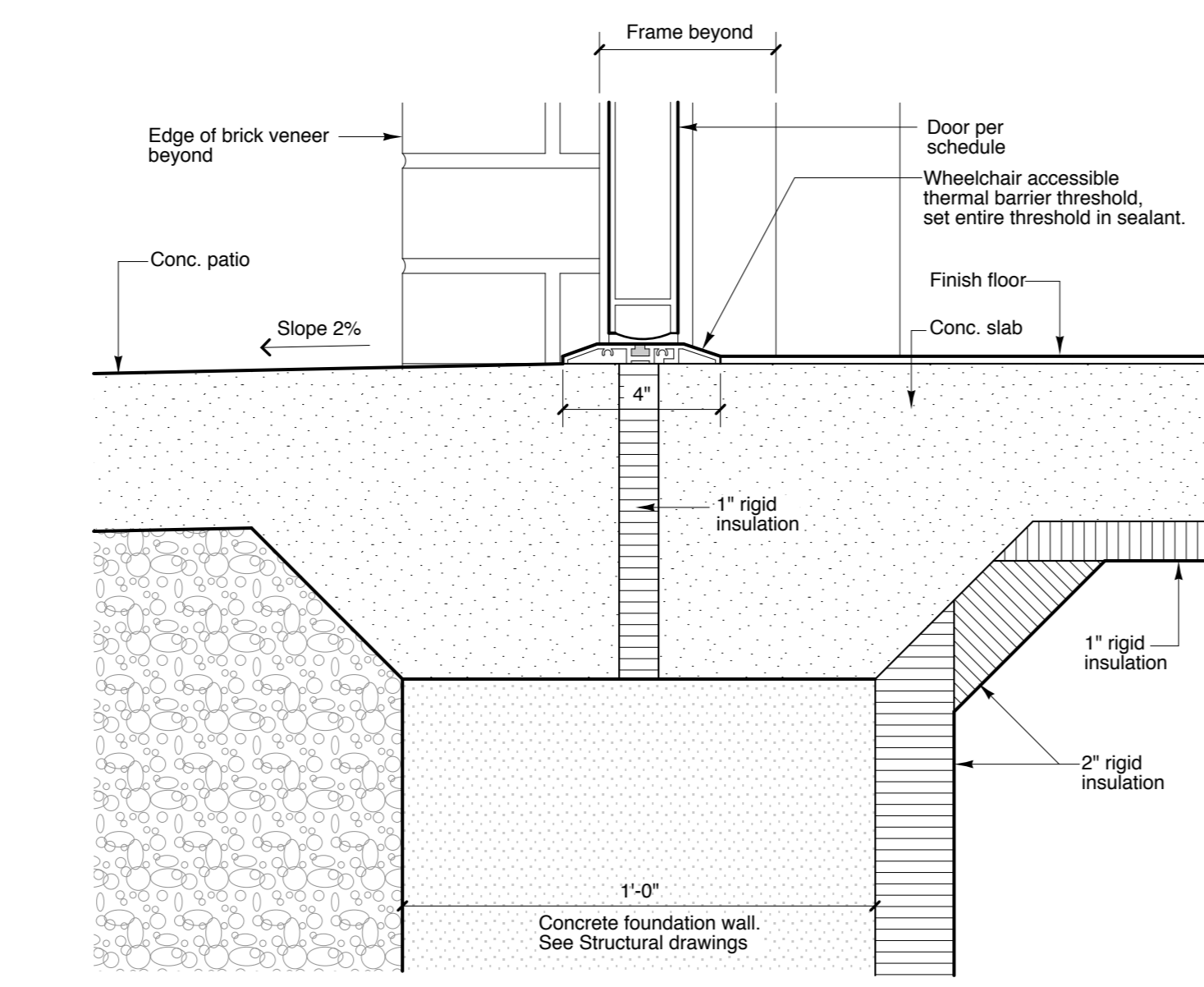
H14 HEAD DETAIL AT ROOF DECK DOOR



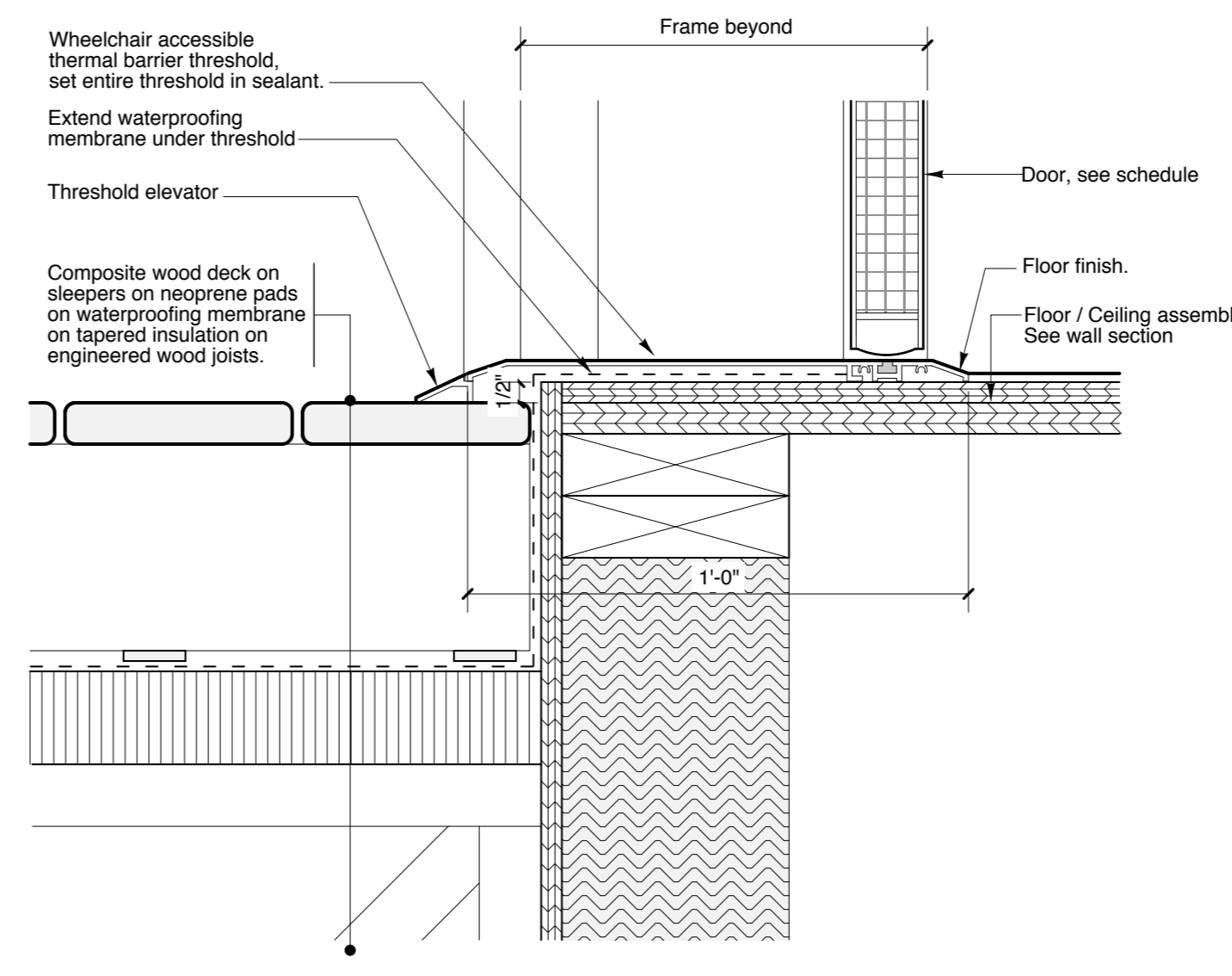
J14 JAMB DETAIL AT ROOF DECK DOOR



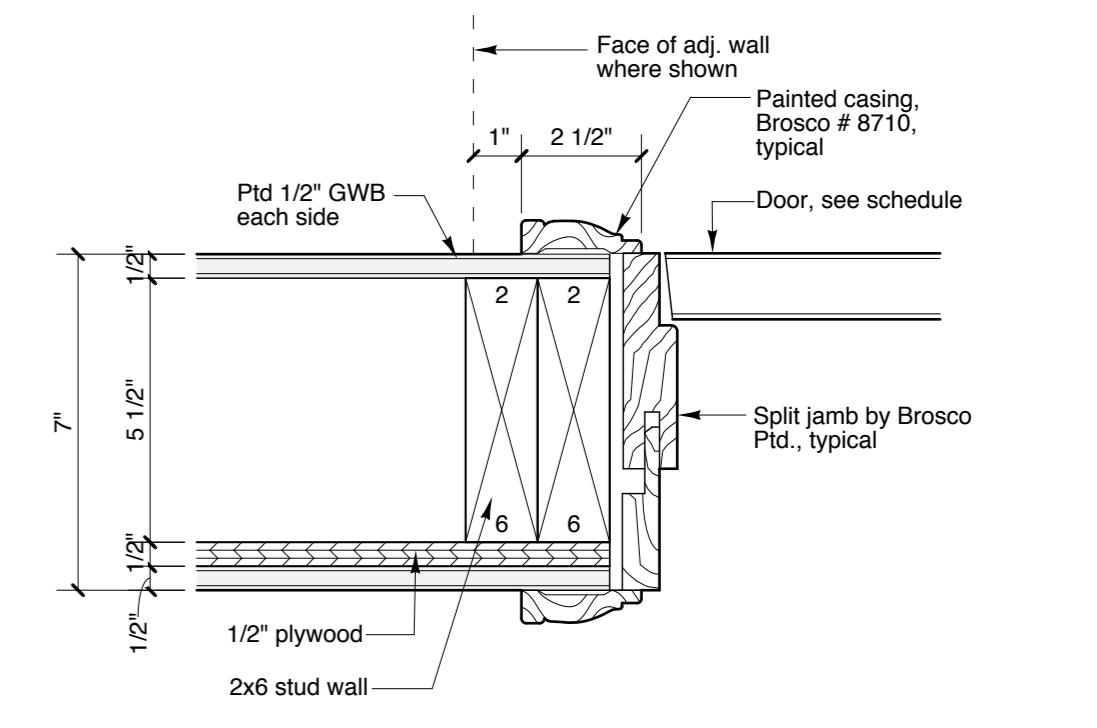
T7 THRESHOLD AT STOREFRONT - BUILDING 2



T8 THRESHOLD AT STOREFRONT - BUILDING 2



T9 THRESHOLD AT ROOF DECK DOOR



H17 J17 JAMB DETAIL / HEAD SIMILAR

Pearl Place Building 1 & 2 Portland Maine

Developer
Avesta Pearl Street One, L.P.

Architect
Winton Scott Architects

Landscape Architect
Carroll Associates

Civil
Gorrill Palmer Consulting Engineers

Structural
Becker Structural

Mechanical / Plumbing
Mechanical Systems Engineers

Electrical
Bartlett Designs

DOOR DETAILS

A11.3

Scale: 3" = 1'-0"

September 1, 2006