

# Pearl Place Building 1 & 2

Portland Maine

Developer  
**Avesta Pearl Street One, L.P.**

Architect  
**Winton Scott Architects**

Landscape Architect  
**Carroll Associates**

Civil  
**Gorrill Palmer Consulting Engineers**

Structural  
**Becker Structural**

Mechanical / Plumbing  
**Mechanical Systems Engineers**

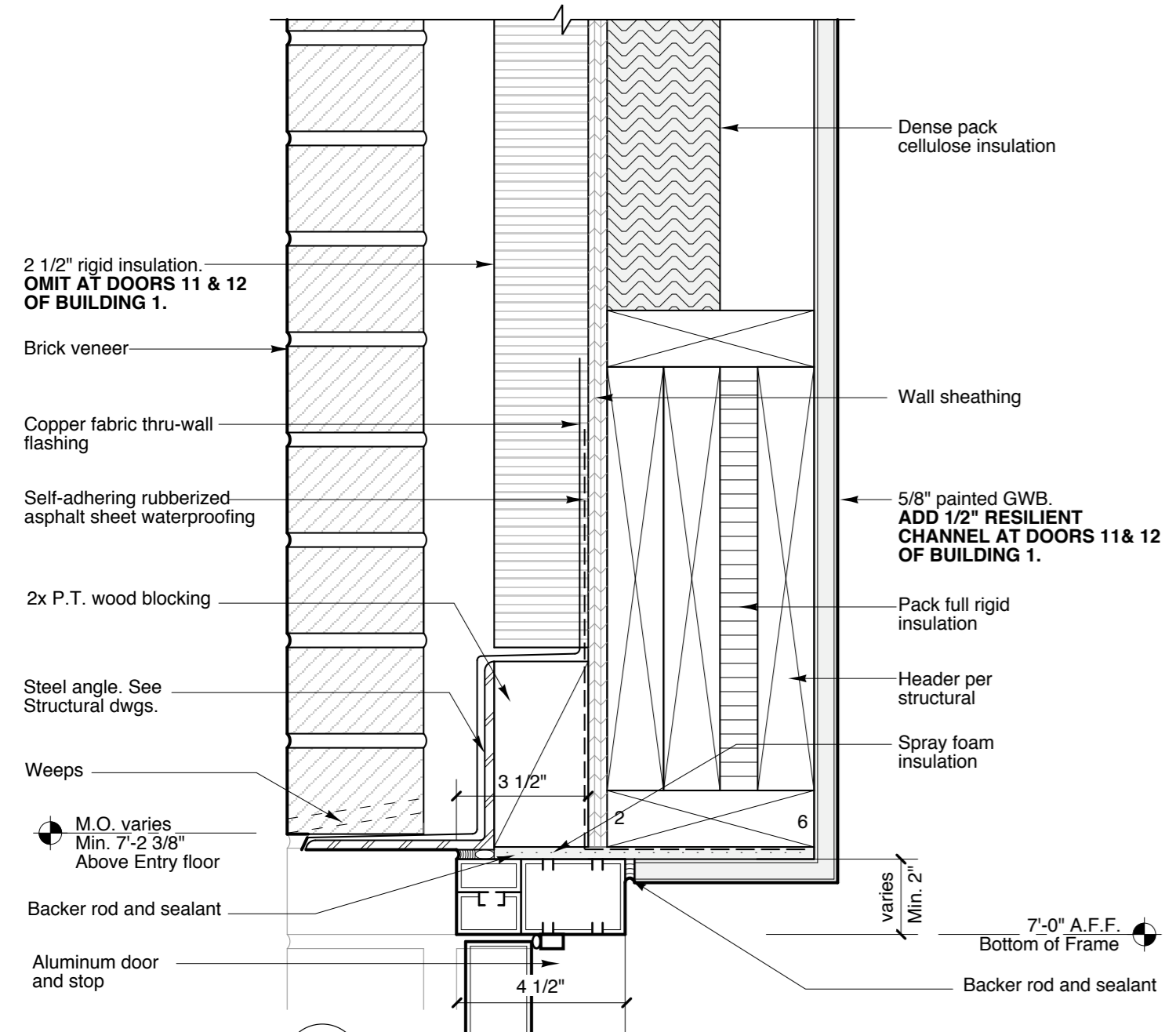
Electrical  
**Bartlett Designs**

## DOOR DETAILS

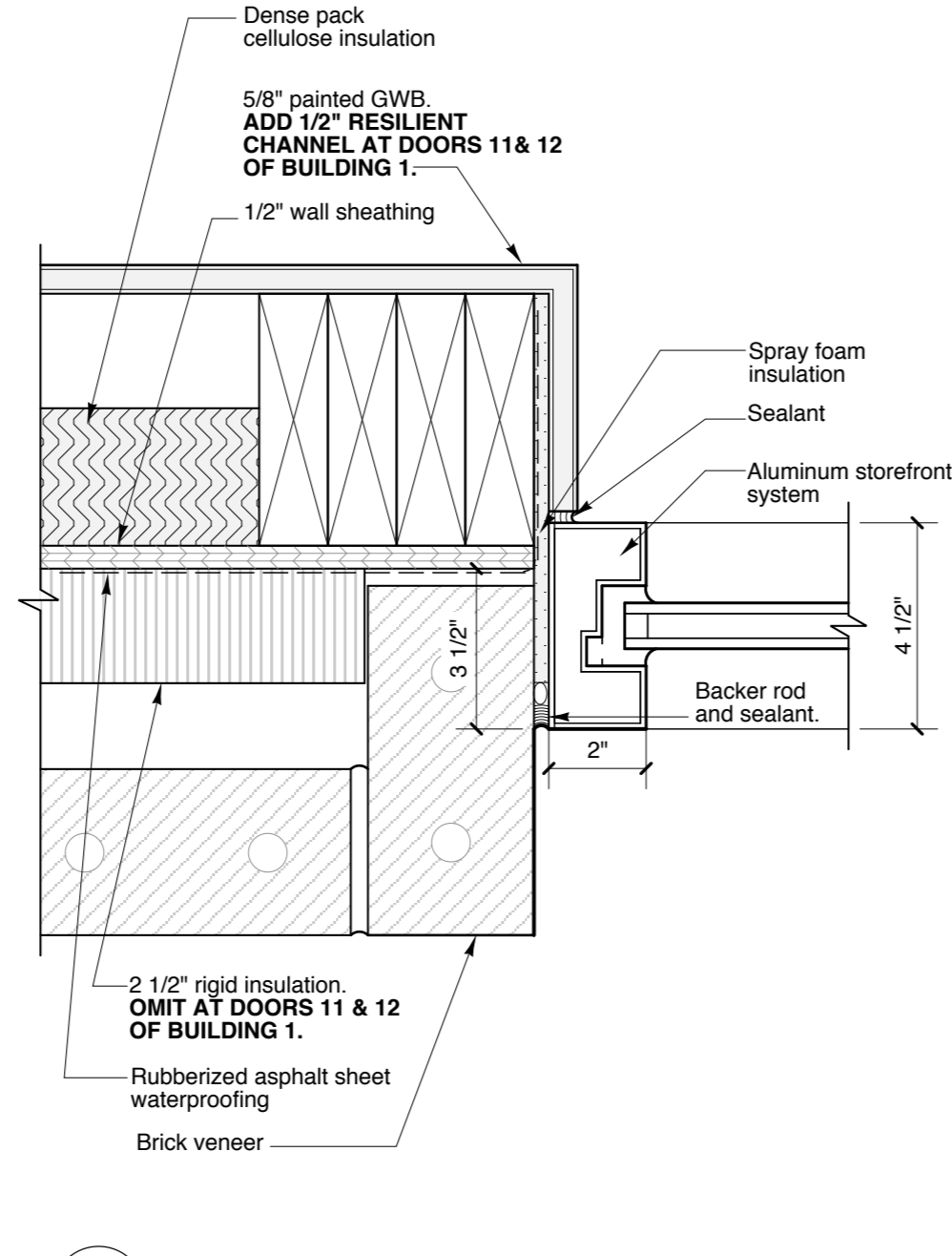
# A11.2

Scale: 3" = 1'-0"

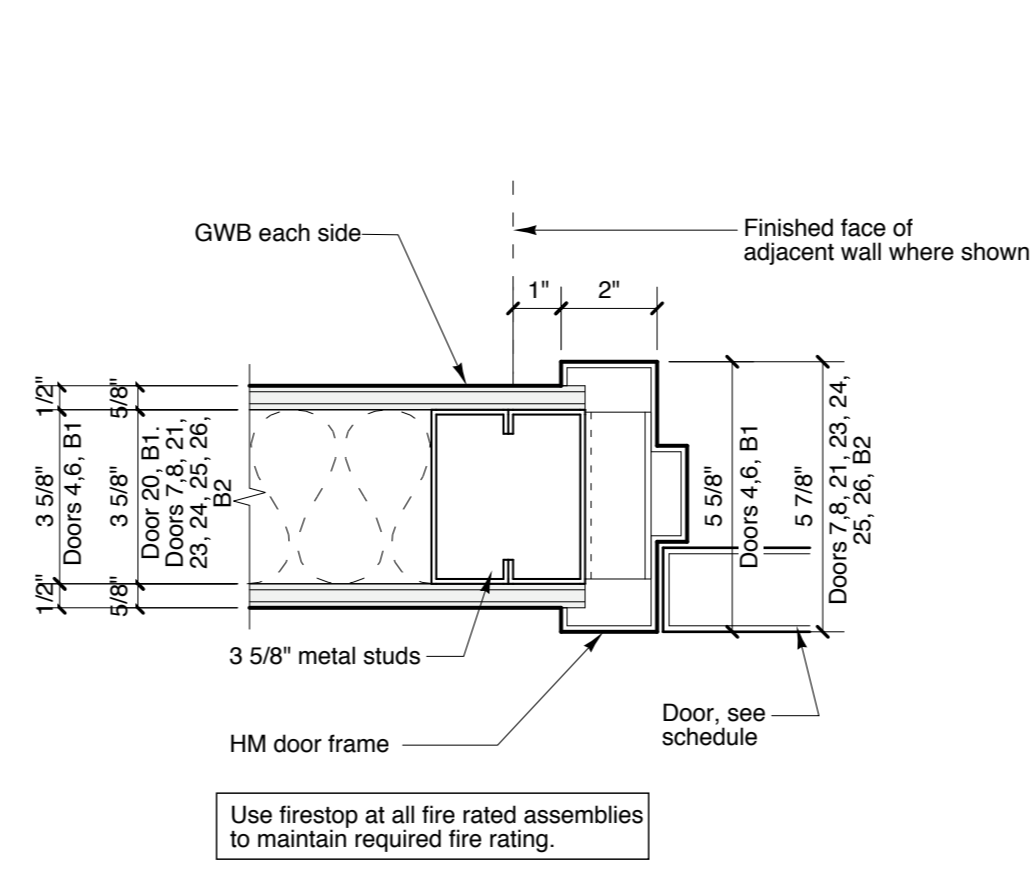
September 1, 2006



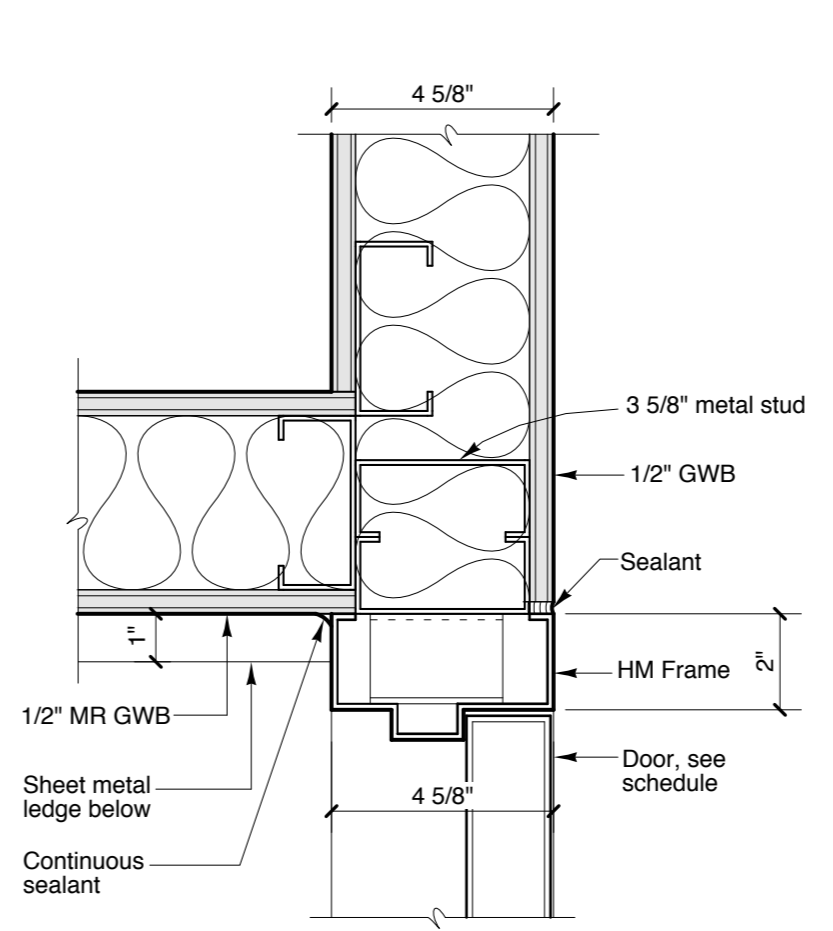
**H1 HEAD DETAIL AT STOREFRONT - BUILDING 1**



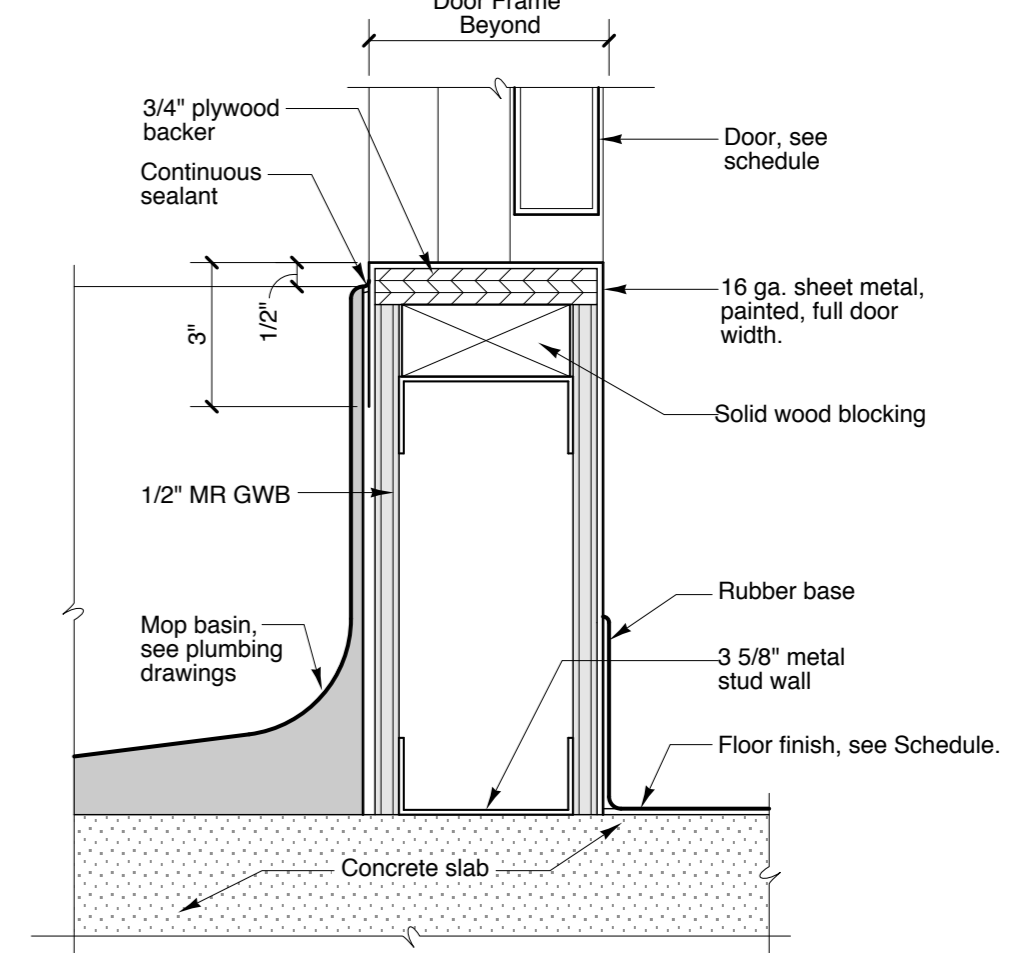
**J1 JAMB DETAIL AT STOREFRONT - BUILDING 1**



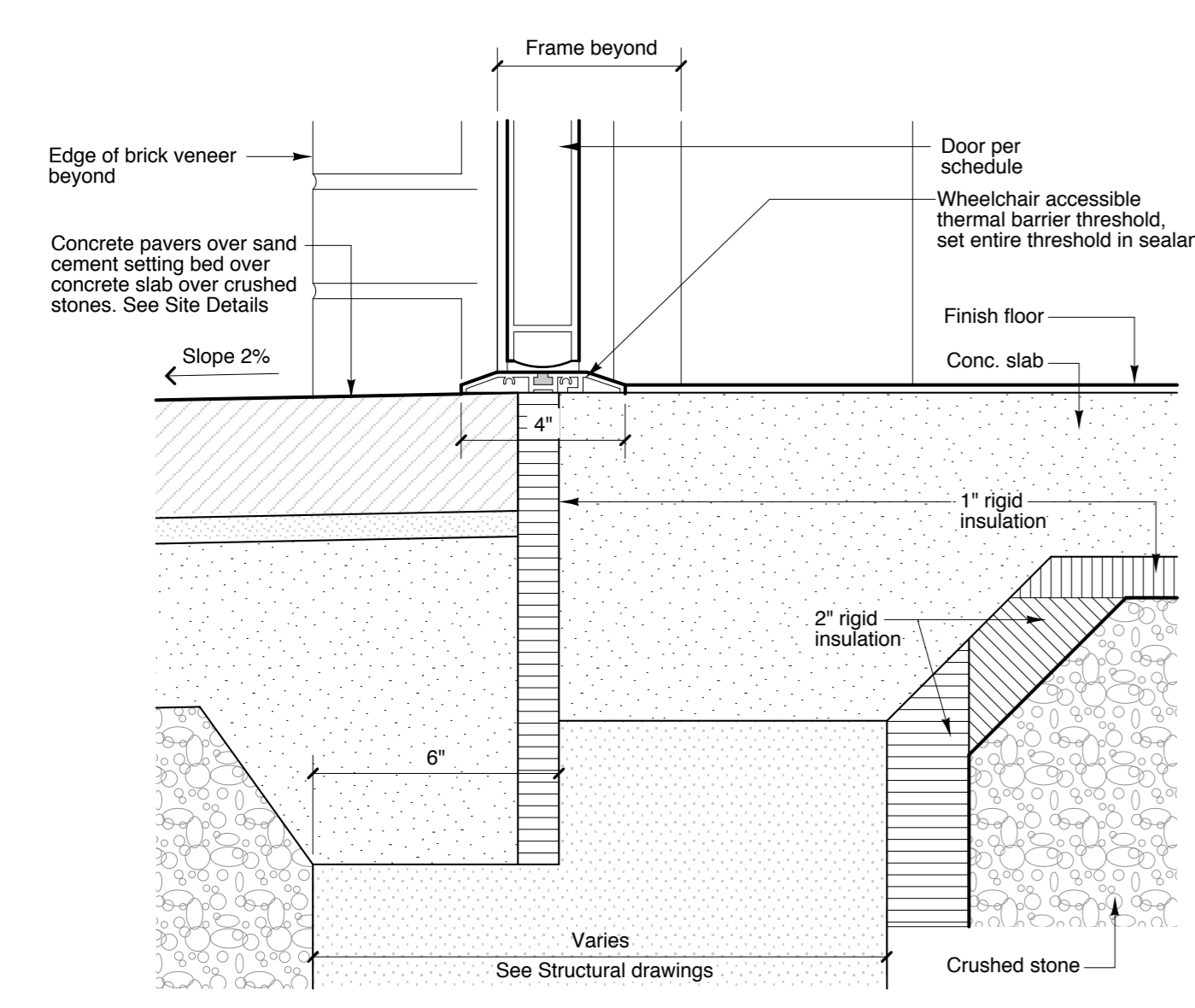
**J2 H2 JAMB DETAIL / HEAD SIMILAR**



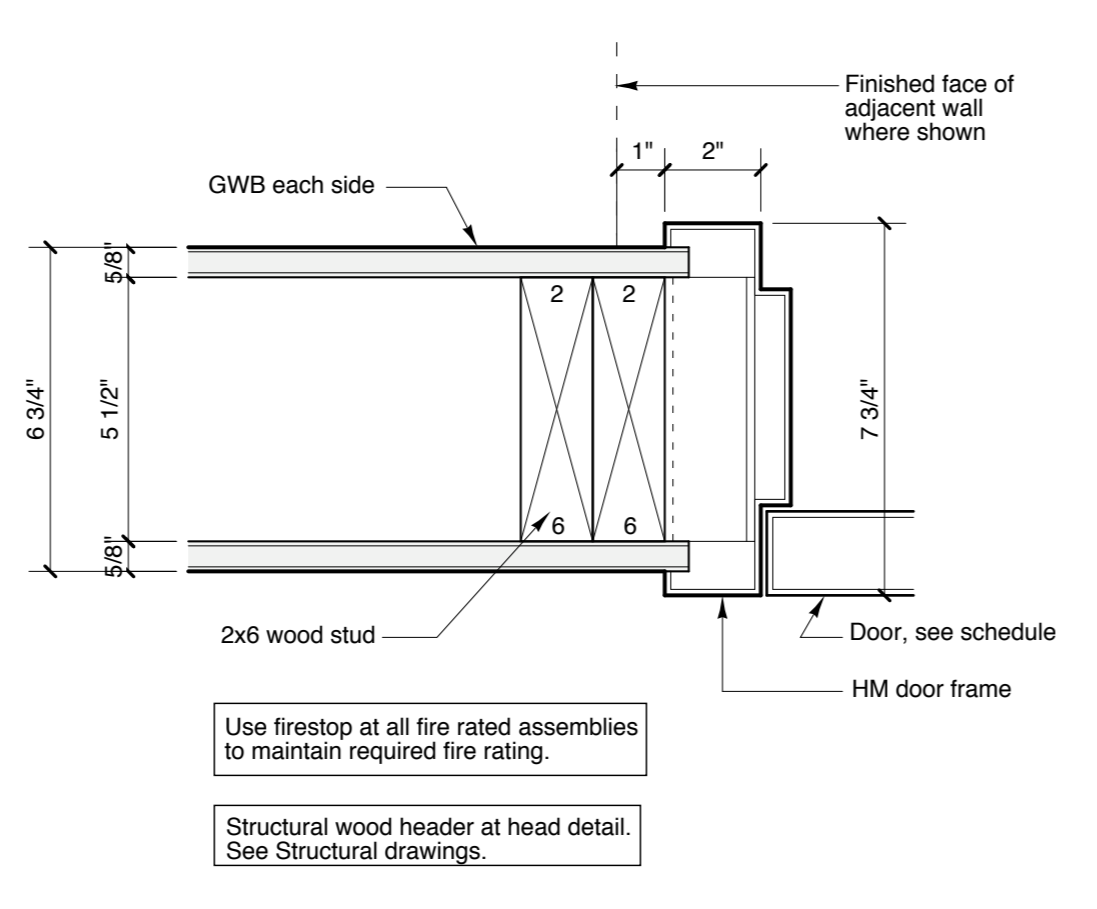
**J3 H3 JAMB/HEAD (SIM.) @ MOP BASINS**



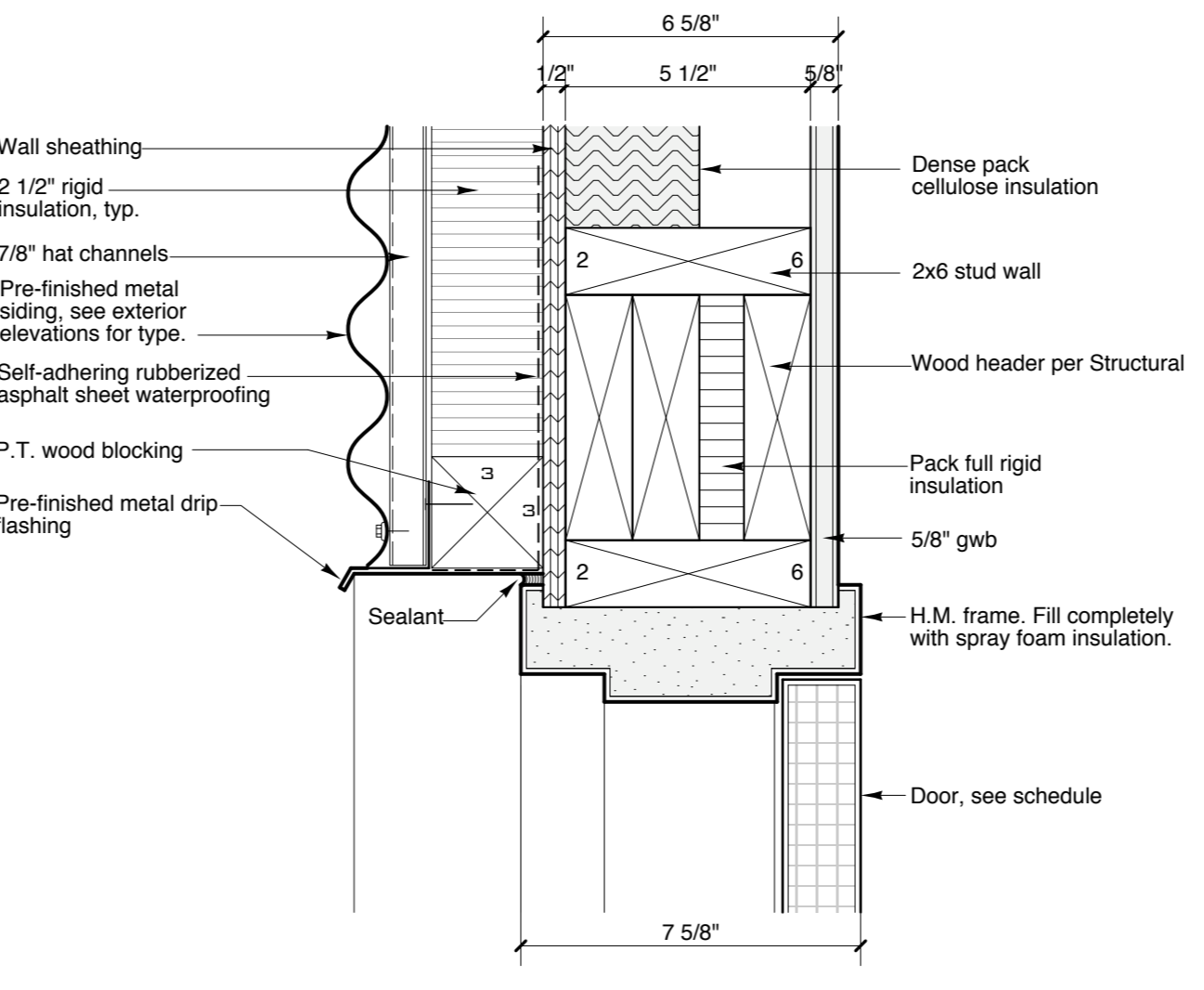
**T2 THRESHOLD @ MOP BASIN**



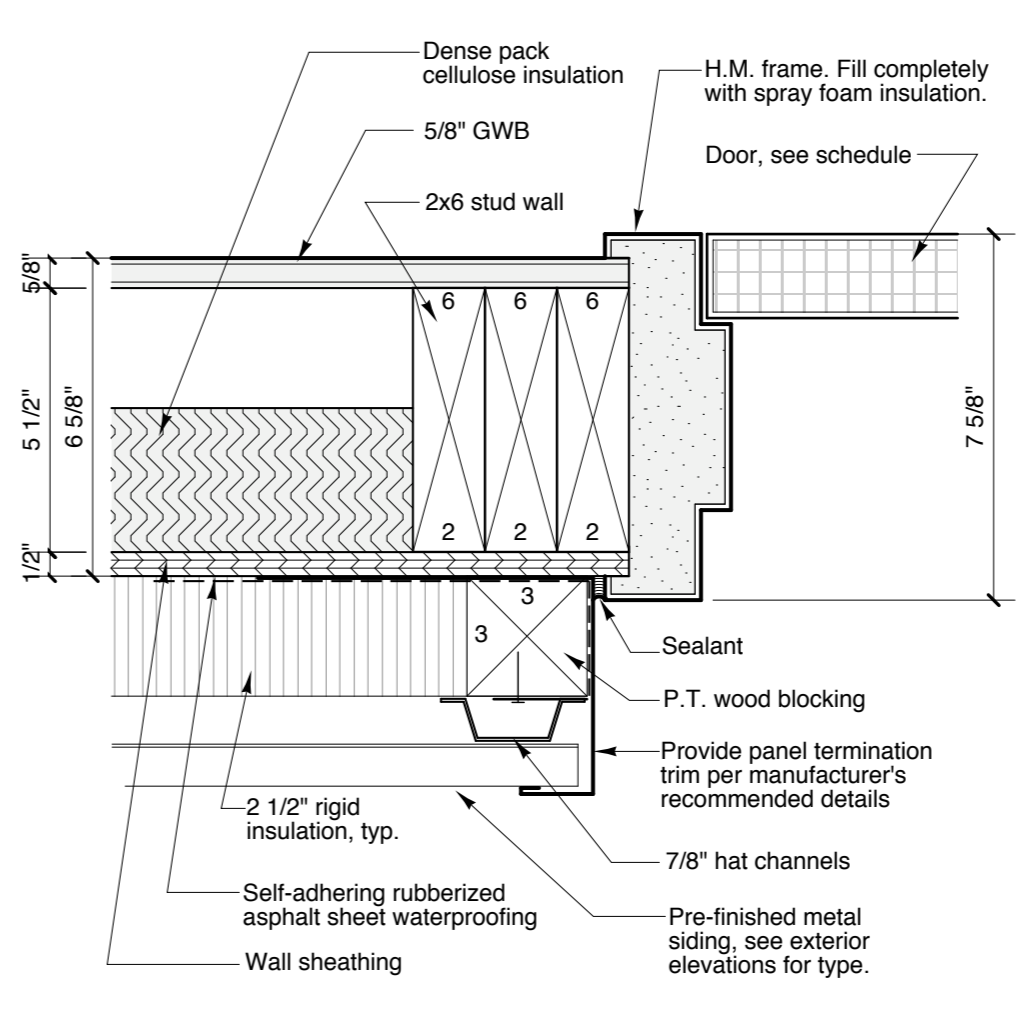
**T1 THRESHOLD AT STOREFRONT - BUILDING 1 & 2**



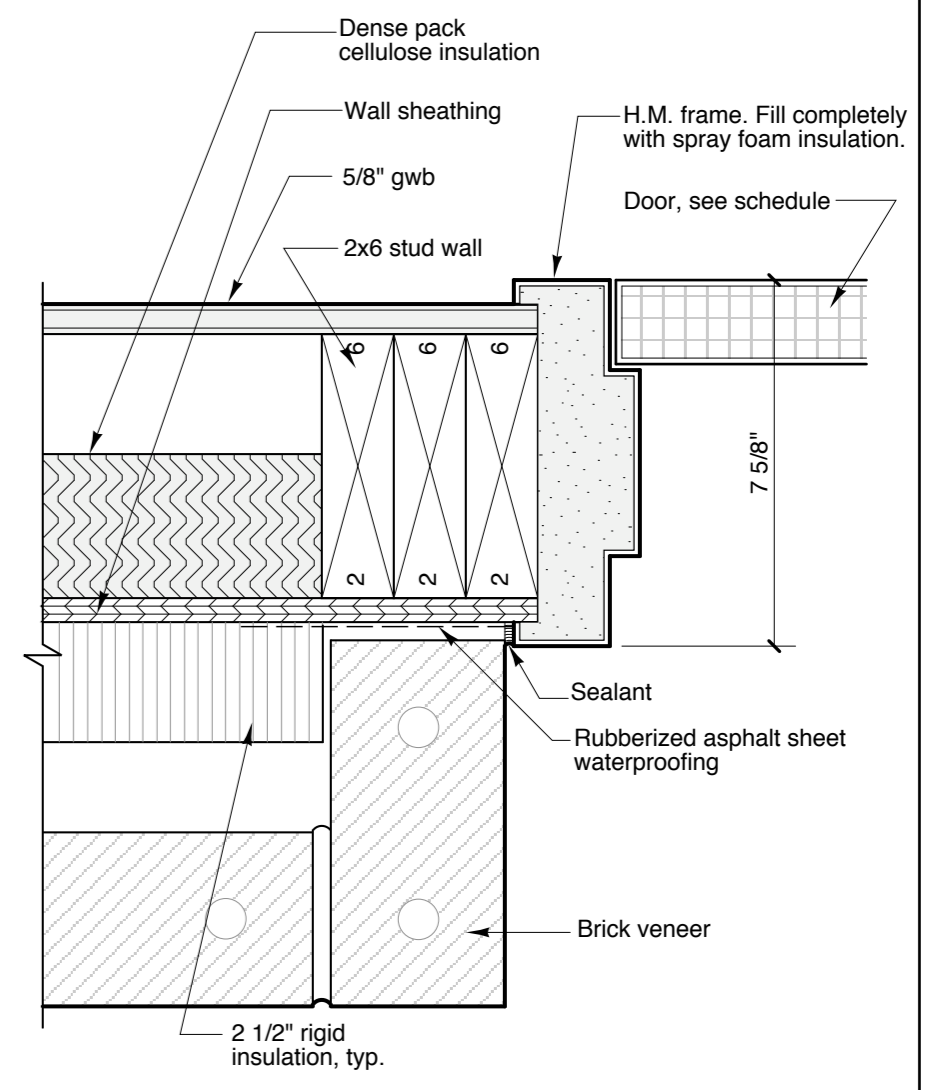
**J4 H4 JAMB DETAIL / HEAD SIMILAR**



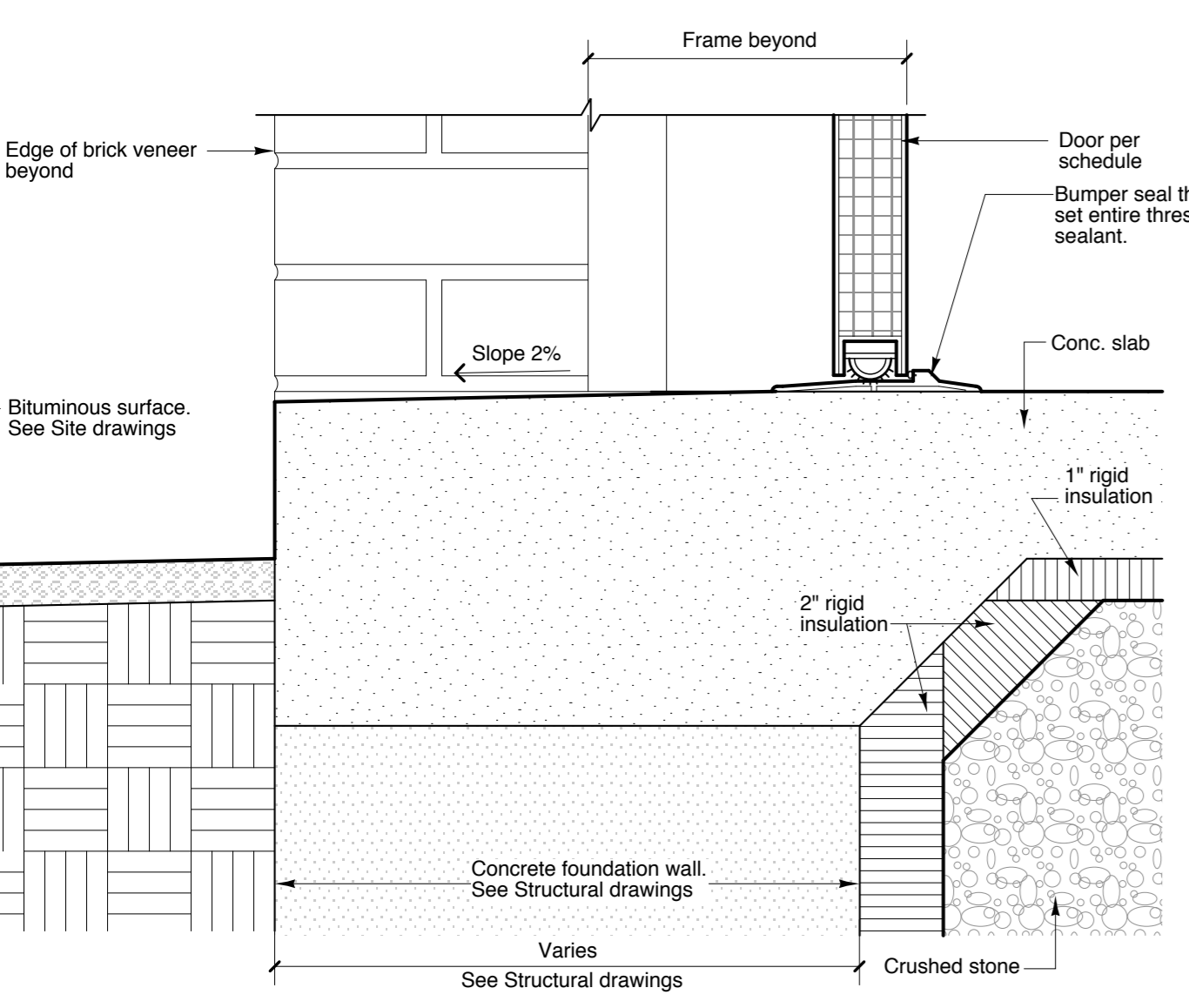
**H5 HEAD DETAIL AT EXT. MECH. ROOM DOOR**



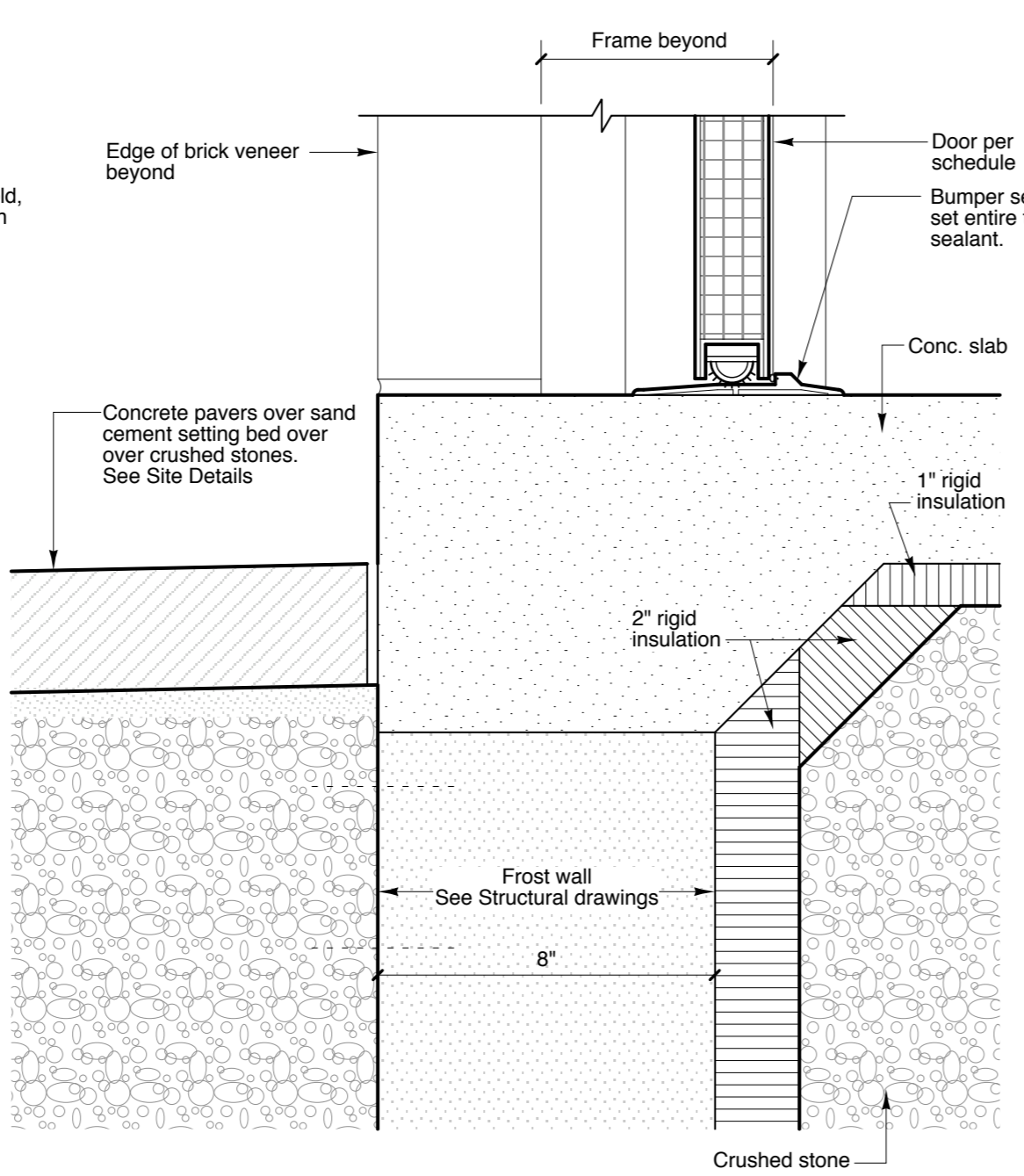
**J5 JAMB DETAIL AT EXT. MECH. ROOM DOOR (AT METAL SIDING)**



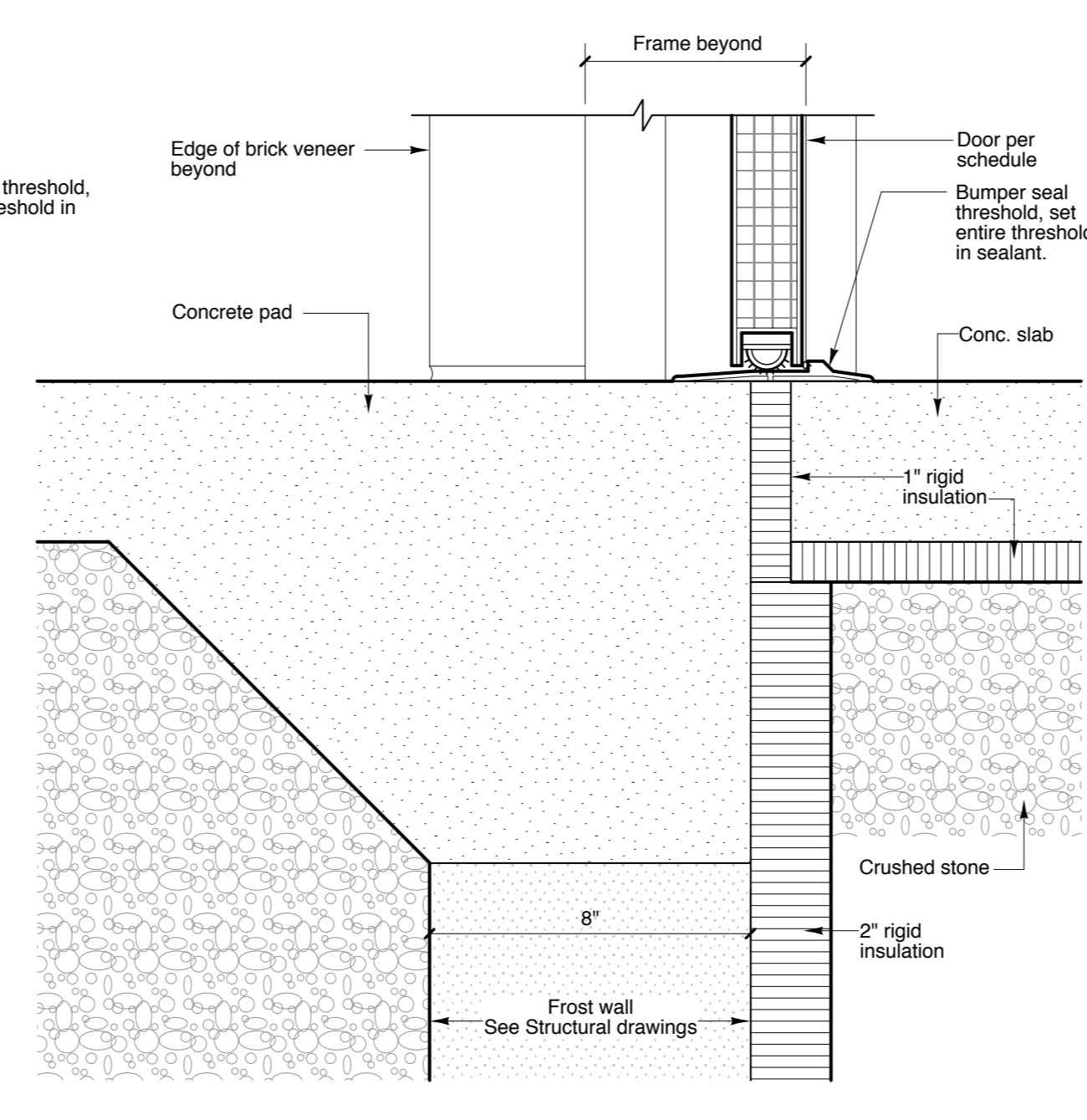
**J5 JAMB DETAIL AT EXT. MECH. ROOM DOOR (AT BRICK VENEER)**



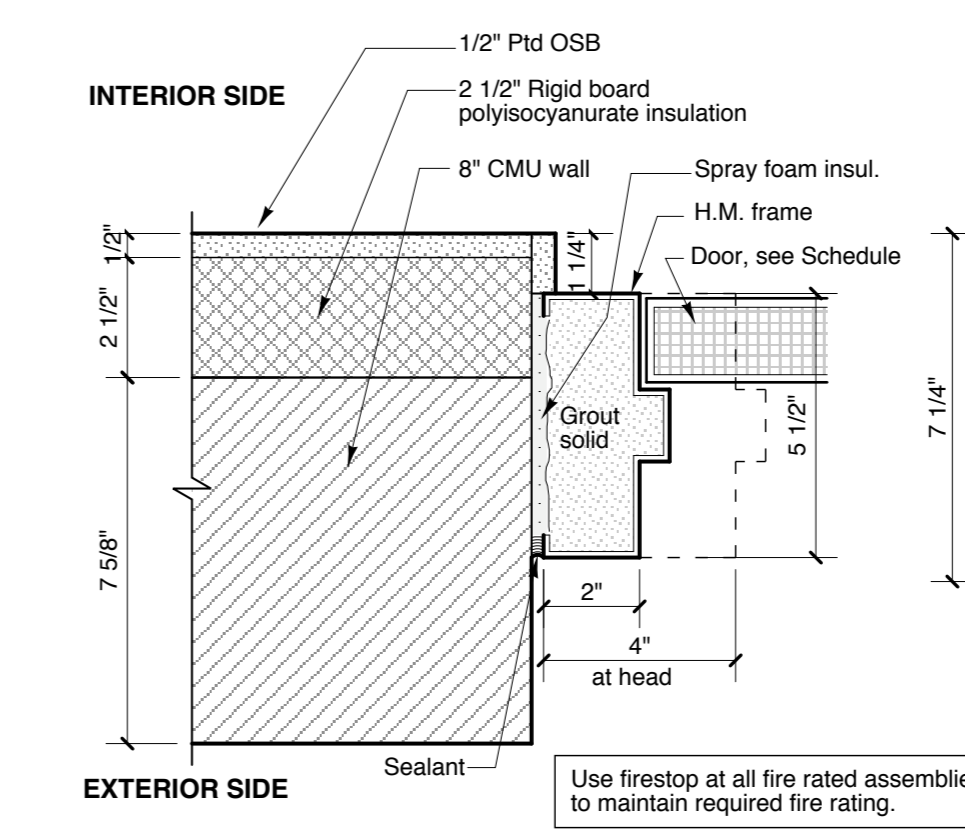
**T3 THRESHOLD AT EXT. MECH. ROOM DOOR**



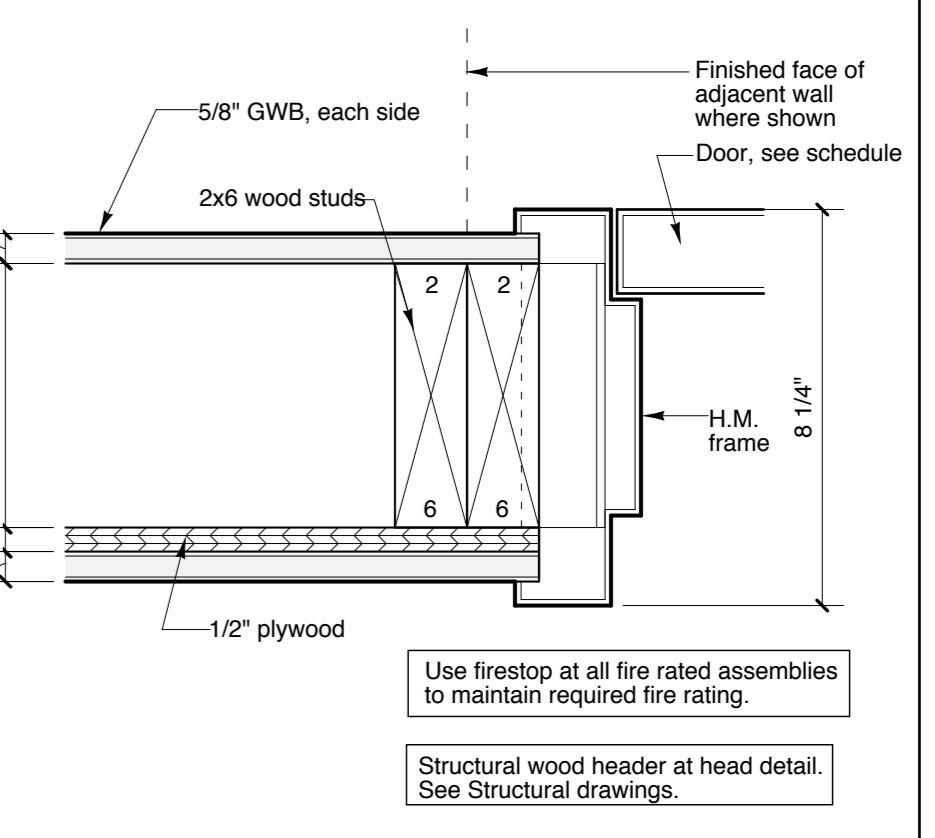
**T4 THRESHOLD AT EXT. ELEV. MACHINE ROOM DOOR**



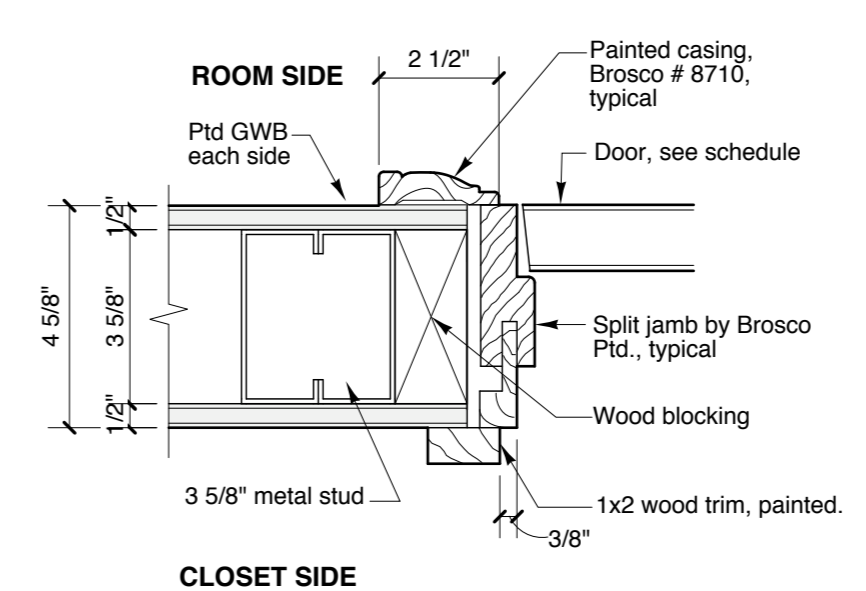
**T5 THRESHOLD AT EXT. STORAGE ROOM DOOR**



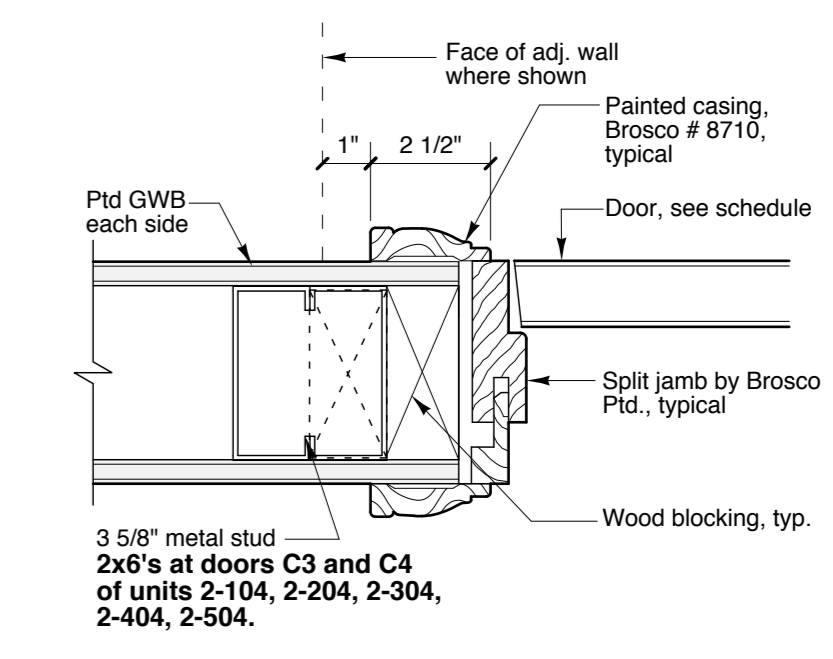
**J6 H6 JAMB DETAIL / HEAD SIMILAR**



**J7 H7 JAMB DETAIL / HEAD SIMILAR**



**J8 H8 INTERIOR JAMB/ HEAD @ CLOSETS**



**J9 H9 TYPICAL INTERIOR JAMB/ HEAD**