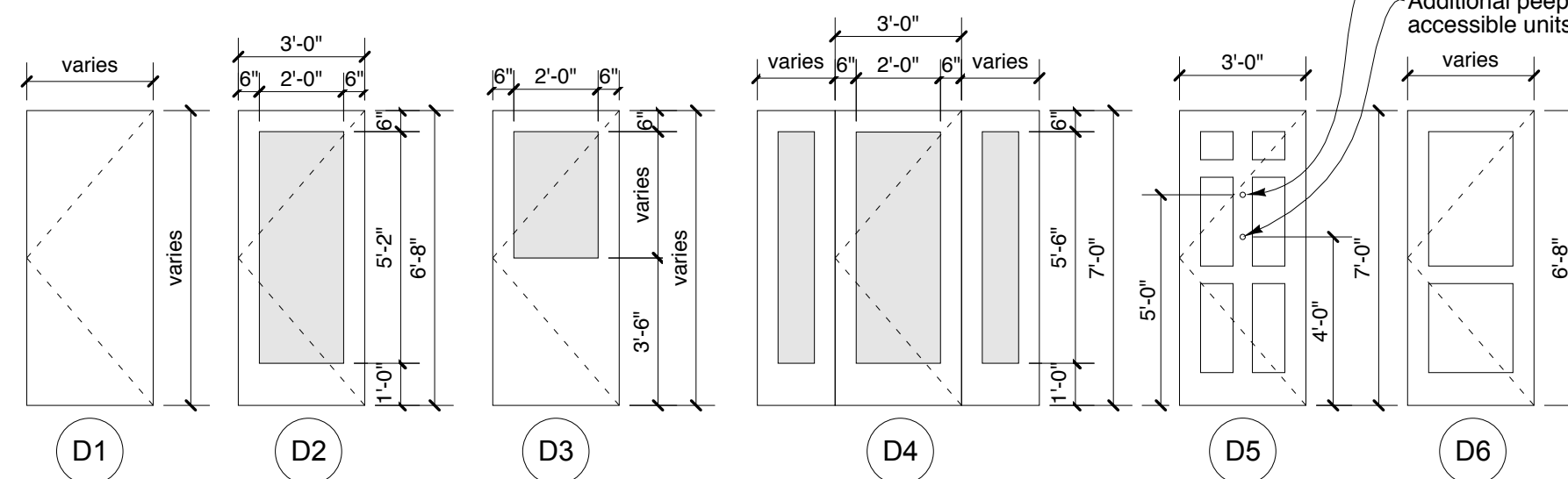


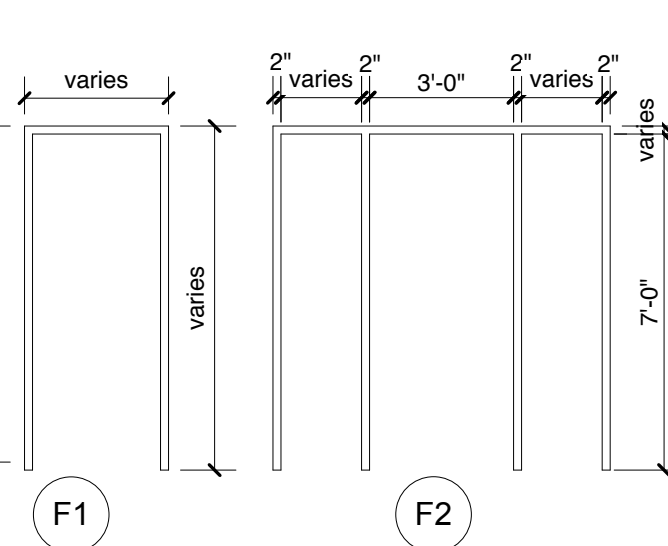
DOOR & FRAME SCHEDULE

BUILDING 1 COMMONS														
General			Door			Frame			Details (see xxxxx)					
Door No.	Size (W x H)	Thickness	Material	Finish	Type	Material	Finish	Type	Head	Jamb	Threshold	Hardware	Label	Remarks
BASEMENT COMMUNITY / COMMON AREA														
1	3'-0" x 7'-0"	1 3/4"	AL	ANOD.	D4	AL	ANOD.	F2	H1	J1	T1	HW14		Provide closer
2	3'-0" x 6'-8"	1 3/4"	WD	NAT	D1	HM	Ptd	F1	H4	J4	-	HW6		Provide closer
3	3'-0" x 7'-0"	1 3/4"	AL	ANOD.	D4	AL	ANOD.	F2	H1	J1	T1	HW14		Provide closer
4	3'-0" x 6'-8"	1 3/4"	WD	NAT	D2	HM	NAT	F1	H2	J2	-	HW8		
5	2'-0" x 5'-8 1/2"	1 3/4"	WD	NAT	D1	HM	NAT	F1	H3	J3	T2	HW8		
6	3'-0" x 6'-8"	1 3/4"	WD	NAT	D1	HM	NAT	F1	H2	J2	-	HW7		
7	3'-0" x 6'-8"	1 3/4"	WD	NAT	D3	HM	Ptd	F1	H4	J4	-	HW9	45 min.	Provide closer
8	3'-0" x 6'-8"	1 3/4"	WD	NAT	D3	HM	Ptd	F1	H4	J4	-	HW6	45 min.	Provide closer
9	3'-0" x 7'-0"	1 3/4"	Insul Mtl	Ptd	D1	HM	Ptd	F1	H5	J5	T3	HW12		Provide closer
10	3'-0" x 7'-0"	1 3/4"	Insul Mtl	Ptd	D1	HM	Ptd	F1	H6	J6	T4	HW12	45 min.	Provide closer
19	3'-0" x 7'-0"	1 3/4"	Insul Mtl	Ptd	D1	HM	Ptd	F1	H6	J6	T5	HW15	90 min.	Provide closer
21	3'-0" x 7'-0"	1 3/4"	Insul Mtl	Ptd	D1	HM	Ptd	F1	H6	J6	T5	HW15	90 min.	Provide closer
FIRST FLOOR COMMON AREA														
11	3'-0" x 7'-0"	1 3/4"	AL	ANOD.	D4	AL	ANOD.	F2	H1	J1	T1	HW14		Provide closer
12	3'-0" x 7'-0"	1 3/4"	AL	ANOD.	D4	AL	ANOD.	F2	H1	J1	T1	HW14		Provide closer
13	3'-0" x 7'-0"	1 3/4"	Insul Mtl	Ptd	D3	HM	Ptd	F1	H4	J4	-	HW10	45 min.	Provide closer
14	3'-0" x 7'-0"	1 3/4"	Insul Mtl	Ptd	D3	HM	Ptd	F1	H4	J4	-	HW10	45 min.	Provide closer
SECOND FLOOR COMMON AREA														
15	3'-0" x 7'-0"	1 3/4"	Insul Mtl	Ptd	D3	HM	Ptd	F1	H4	J4	-	HW10	45 min.	Provide closer
16	3'-0" x 7'-0"	1 3/4"	Insul Mtl	Ptd	D3	HM	Ptd	F1	H4	J4	-	HW10	45 min.	Provide closer
THIRD FLOOR COMMON AREA														
17	3'-0" x 7'-0"	1 3/4"	Insul Mtl	Ptd	D3	HM	Ptd	F1	H4	J4	-	HW10	45 min.	Provide closer
18	3'-0" x 7'-0"	1 3/4"	Insul Mtl	Ptd	D3	HM	Ptd	F1	H4	J4	-	HW10	45 min.	Provide closer
20	2'-6" x 7'-0"	1 3/4"	Insul Mtl	Ptd	D1	HM	Ptd	F1	H2	J2	-	HW11	20 min.	Provide closer
BUILDING 2 COMMONS														
General			Door			Frame			Details (see xxxxx)					
Door No.	Size (W x H)	Thickness	Material	Finish	Type	Material	Finish	Type	Head	Jamb	Threshold	Hardware	Label	Remarks
FIRST FLOOR COMMON AREA														
1	3'-0" x 7'-0"	1 3/4"	AL	ANOD.	D4	AL	ANOD.	F2	H11	J11	T1	HW14		Provide closer
2	3'-0" x 7'-0"	1 3/4"	AL	ANOD.	D4	AL	ANOD.	F1	H11	J11	T7	HW14		Provide closer
3	3'-0" x 7'-0"	1 3/4"	AL	ANOD.	D4	AL	ANOD.	F2	H11	J11	T8	HW14		Provide closer
4	3'-0" x 7'-0"	1 3/4"	AL	ANOD.	D4	AL	ANOD.	F1	H11	J11	T8	HW14		Provide closer
5	3'-0" x 7'-0"	1 3/4"	Insul Mtl	Ptd	D3	HM	Ptd	F1	H7	J7	-	HW10	20 min.	Provide closer
6	3'-0" x 7'-0"	1 3/4"	Insul Mtl	Ptd	D7	HM	Ptd	F1	H12	J12	-	HW10	90 min.	Provide closer
7	3'-0" x 7'-0"	1 3/4"	Insul Mtl	Ptd	D1	HM	Ptd	F1	H2	J2	-	HW11	45 min.	Provide closer
8	3'-0" x 7'-0"	1 3/4"	Insul Mtl	Ptd	D3	HM	Ptd	F1	H2	J2	-	HW9	45 min.	Provide closer
9	3'-0" x 7'-0"	1 3/4"	Insul Mtl	Ptd	D7	HM	Ptd	F1	H12	J12	-	HW10	90 min.	Provide closer
10	3'-0" x 7'-0"	1 3/4"	Insul Mtl	Ptd	D1	HM	Ptd	F1	H13	J13	-	HW11	90 min.	Provide closer
21	3'-0" x 7'-0"	1 3/4"	Insul Mtl	Ptd	D1	HM	Ptd	F1	H2	J2	-	HW11	45 min.	Provide closer
SECOND FLOOR COMMON AREA														
11	3'-0" x 7'-0"	1 3/4"	Insul Mtl	Ptd	D7	HM	Ptd	F1	H12	J12	-	HW10	90 min.	Provide closer
12	3'-0" x 7'-0"	1 3/4"	Insul Mtl	Ptd	D7	HM	Ptd	F1	H12	J12	-	HW10	90 min.	Provide closer
THIRD FLOOR COMMON AREA														
13	3'-0" x 7'-0"	1 3/4"	Insul Mtl	Ptd	D7	HM	Ptd	F1	H12	J12	-	HW10	90 min.	Provide closer
14	3'-0" x 7'-0"	1 3/4"	Insul Mtl	Ptd	D7	HM	Ptd	F1	H12	J12	-	HW10	90 min.	Provide closer
FOURTH FLOOR COMMON AREA														
15	3'-0" x 7'-0"	1 3/4"	Insul Mtl	Ptd	D7	HM	Ptd	F1	H12	J12	-	HW10	90 min.	Provide closer
16	3'-0" x 7'-0"	1 3/4"	Insul Mtl	Ptd	D7	HM	Ptd	F1	H12	J12	-	HW10	90 min.	Provide closer
FIFTH FLOOR COMMON AREA														
17	3'-0" x 7'-0"	1 3/4"	Insul Mtl	Ptd	D7	HM	Ptd	F1	H12	J12	-	HW10	90 min.	Provide closer
18	3'-0" x 7'-0"	1 3/4"	Insul Mtl	Ptd	D7	HM	Ptd	F1	H12	J12	-	HW10	90 min.	Provide closer
19	2'-6" x 7'-0"	1 3/4"	Insul Mtl	Ptd	D1	HM	Ptd	F1	H4	J4	-	HW11	20 min.	Provide closer
20	3'-0" x 7'-0"	1 3/4"	Insul Mtl	Ptd	D3	HM	Ptd	F1	H14	J14	T9	HW13	20 min.	Provide closer
22	2'-6" x 7'-0"	1 3/4"	Insul Mtl	Ptd	D1	HM	Ptd	F1	H2	J2	-	HW11	20 min.	Provide closer
23	PR 2'-10 3/8" x 7'-0"	1 3/4"	Insul Mtl	Ptd	D8	HM	Ptd	F1	H2	J2	-	HW16	45 min.	Provide closer & open door device
24	PR 2'-10 3/8" x 7'-0"	1 3/4"	Insul Mtl	Ptd	D8	HM	Ptd	F1	H2	J2	-	HW16	45 min.	Provide closer & open door device
25	PR 2'-10 3/8" x 7'-0"	1 3/4"	Insul Mtl	Ptd	D8	HM	Ptd	F1	H2	J2	-	HW16	45 min.	Provide closer & open door device
26	PR 2'-10 3/8" x 7'-0"	1 3/4"	Insul Mtl	Ptd	D8	HM	Ptd	F1	Hx2	J2	-	HW16	45 min.	Provide closer & open door device
BUILDING 1 & 2 LIVING UNITS														
General			Door			Frame			Details (see xxxxx)					
Door No.	Size (W x H)	Thickness	Material	Finish	Type	Material	Finish	Type	Head	Jamb	Threshold	Hardware	Label	Remarks
UNIT TYPE A = UNITS 1-106; 1-206; 1-306; 2-102; 2-105 opp.; 2-202; 2-205 opp.; 2-206; 2-302; 2-305 opp.; 2-306; 2-402; 2-405 opp.; 2-406; 2-502; 2-505 opp.; 2-506 1 Bedroom adaptable														
A1	3'-0" x 7'-0"	1 3/4"	Insul Mtl	Ptd	D5	HM	Ptd	F1	H15	J15	-	HW1	20 min.	Mtl frame "Redframe" type. Spring hinges; self-latching hardware & weatherstripping
A2	2'-6" x 6'-8"	1 3/8"	Mld Hdbd	Ptd	D6	WD	Ptd	F1	H8	J8	-	HW2		
A3	2'-10" x 6'-8"	1 3/8"	Mld Hdbd	Ptd	D6	WD	Ptd	F1	H9	J9	-	HW4		
A4	2'-10" x 6'-8"	1 3/8"	Mld Hdbd	Ptd	D6	WD	Ptd	F1	H9	J9	T6	HW4		3/4" undercut
A5	2'-10" x 6'-8"	1 3/8"	Mld Hdbd	Ptd	D6	WD	Ptd	F1	H8	J8	-	HW2		

DOOR TYPES



FRAME TYPES



DOOR & FRAME SCHEDULE

BUILDING 1 & 2 LIVING UNITS														
General			Door			Frame			Details (see xxxxx)					
Door No.	Size (W x H)	Thickness	Material	Finish	Type	Material	Finish	Type	Head	Jamb	Threshold	Hardware	Label	Remarks
UNIT TYPE B = UNITS 1-101; 1-105; 1-201; 1-205; 1-301; 1-305; 2-101 opp.; 2-201 opp.; 2-301 opp.; 2-401 opp.; 2-501 opp. 2 Bedroom adaptable														
B1	3'-0" x 7'-0"	1 3/4"	Insul Mtl	Ptd	D5	HM	Ptd	F1	H15	J15	-	HW1	20 min.	Mtl frame "Redframe" type. Spring hinges; self-latching hardware & weatherstripping
B2	2'-6" x 6'-8"	1 3/8"	Mld Hdbd	Ptd	D6	WD	Ptd	F1	H8	J8	-	HW2		
B3	2'-10" x 6'-8"	1 3/8"	Mld Hdbd	Ptd	D6	WD	Ptd	F1	H9	J9	-	HW4		
B4	2'-10" x 6'-8"	1 3/8"	Mld Hdbd	Ptd	D6	WD	Ptd	F1	H9	J9	-	HW4		
B5	2'-10" x 6'-8"	1 3/8"	Mld Hdbd	Ptd	D6	WD	Ptd	F1	H9	J9	T6	HW4		3/4" undercut
B6	PR 1'-6" x 6'-8"	1 3/8"	Mld Hdbd	Ptd	D6	WD	Ptd	F1	H8	J8	-	HW3		
B7	2'-10" x 6'-8"	1 3/8"	Mld Hdbd	Ptd	D6	WD	Ptd	F1	H8	J8	-	HW2		
UNIT TYPE C = UNITS 1-103; 1-203; 1-303; 2-104; 2-204; 2-304; 2-404; 2-504 3 Bedroom adaptable														
C1	3'-0" x 7'-0"	1 3/4"	Insul Mtl	Ptd	D5	HM	Ptd	F1	H10	J10	-	HW1	20 min.	Mtl frame "Redframe" type. Spring hinges; self-latching hardware & weatherstripping
C1A	3'-0" x 7'-0"	1 3/4"	Insul Mtl	Ptd	D5	HM	Ptd	F1	H16	J16	-	HW1	20 min.	Mtl frame "Redframe" type. Spring hinges; self-latching hardware & weatherstripping
C2	2'-2" x 6'-8"	1 3/8"	Mld Hdbd	Ptd	D6	WD	Ptd	F1	H8	J8	-	HW2		
C3	2'-10" x 6'-8"	1 3/8"	Mld Hdbd	Ptd	D6	WD	Ptd	F1	H9	J9	-	HW4		
C4	2'-10" x 6'-8"	1 3/8"	Mld Hdbd	Ptd	D6	WD	Ptd	F1	H9	J9	-	HW4		
C5	2'-10" x 6'-8"	1 3/8"	Mld Hdbd	Ptd	D6	WD	Ptd	F1	H9	J9	-	HW4		
C6	2'-10" x 6'-8"	1 3/8"	Mld Hdbd	Ptd	D6	WD	Ptd	F1	H9	J9	T6	HW4		3/4" undercut
C7	2'-6" x 6'-8"	1 3/8"	Mld Hdbd	Ptd	D6	WD	Ptd	F1	H9	J9	T6	HW4		3/4" undercut
C8	2'-6" x 6'-8"	1 3/8"	Mld Hdbd	Ptd	D6	WD	Ptd	F1	H8	J8	-	HW2		
C9	PR 2'-0" x 6'-8"	1 3/8"	Mld Hdbd	Ptd	D6	WD	Ptd	F1	H8	J8	-	HW3		
C10	PR 1'-9" x 6'-8"	1 3/8"	Mld Hdbd	Ptd	D6	WD	Ptd	F1	H8	J8	-	HW3		
C11	PR 1'-9" x 6'-8"	1 3/8"	Mld Hdbd	Ptd	D6	WD	Ptd	F1	H8	J8	-	HW3		
UNIT TYPE D = UNITS 1-104; 1-204; 1-304 1 Bedroom accessible "A"														
D1	3'-0" x 7'-0"	1 3/4"	Insul Mtl	Ptd	D5	HM	Ptd	F1	H10.1	J10.1	-	HW1	20 min.	Mtl frame "Redframe" type. Spring hinges; self-latching hardware & weatherstripping
D2	3'-0" x 6'-8"	1 3/8"	Mld Hdbd	Ptd	D6	WD	Ptd	F1	H9	J9	-	HW4		
D3	3'-0" x 6'-8"	1 3/8"	Mld Hdbd	Ptd	D6	WD	Ptd	F1	H9	J9	T10	HW4		3/4" undercut
D4	PR 2'-0" x 6'-8"	1 3/8"	Mld Hdbd	Ptd	D6	WD	Ptd	F1	H8	J8	-	HW3		
D5	2'-4" x 6'-8"	1 3/8"	Mld Hdbd	Ptd	D6	WD	Ptd	F1	H8	J8	-	HW2		
UNIT TYPE E = UNITS 2-103; 2-203; 2-303; 2-403; 2-503 2 Bedroom accessible "A"														
E1	3'-0" x 7'-0"	1 3/4"	Insul Mtl	Ptd	D5	HM	Ptd	F1	H10	J10	-	HW1	20 min.	Mtl frame "Redframe" type. Spring hinges; self-latching hardware & weatherstripping
E2	2'-4" x 6'-8"	1 3/8"	Mld Hdbd	Ptd	D6	WD	Ptd	F1	H8	J8	-	HW2		
E3	3'-0" x 6'-8"	1 3/8"	Mld Hdbd											