

# Pearl Place Building 1 & 2 Portland Maine

**Developer**  
Avesta Pearl  
Street One, L.P.

**Architect**  
Winton Scott Architects

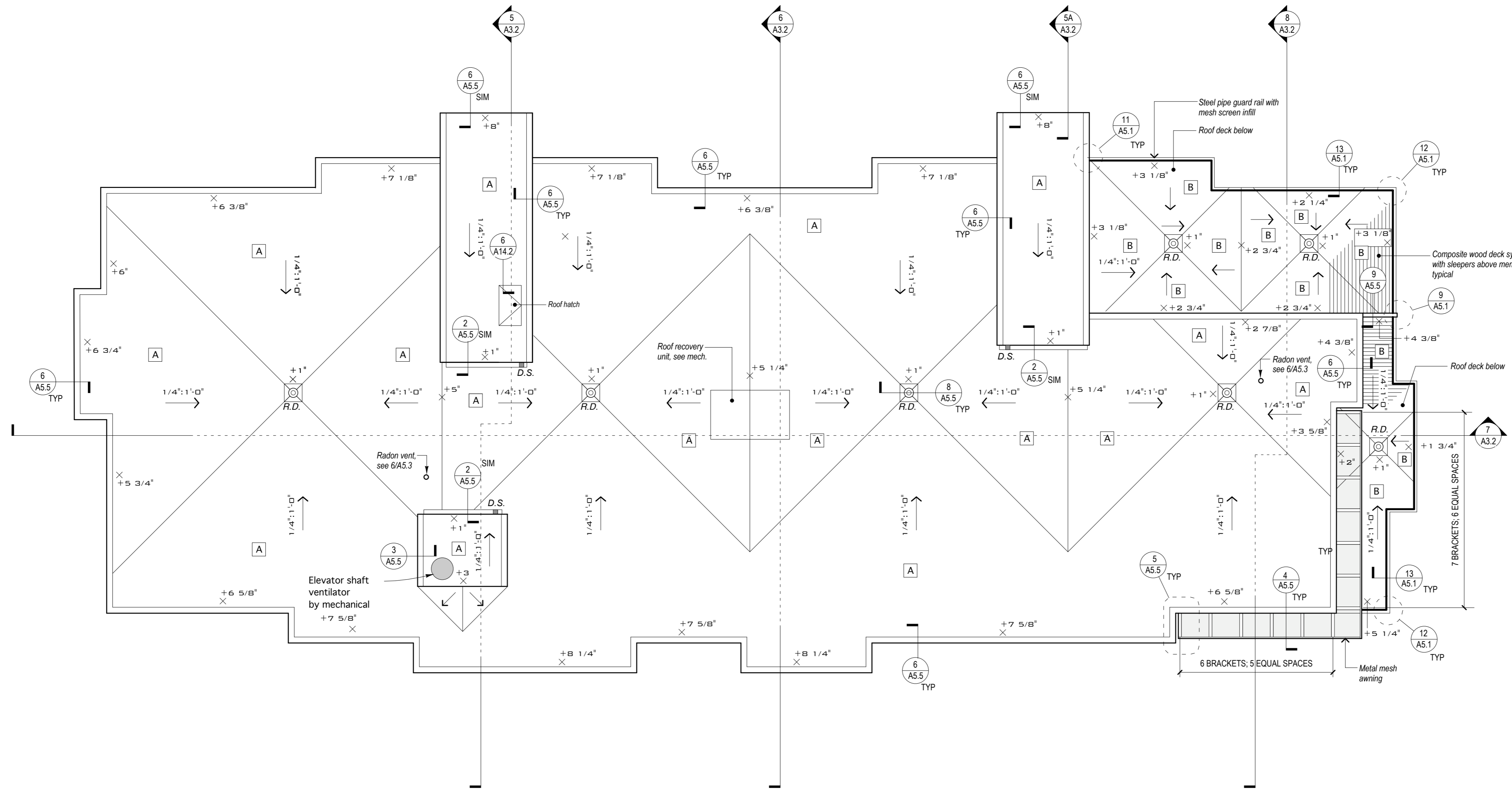
**Landscape Architect**  
Carroll Associates  
**Civil**  
Gorrill Palmer  
Consulting Engineers  
**Structural**  
Becker Structural  
**Mechanical / Plumbing**  
Mechanical Systems  
Engineers  
**Electrical**  
Bartlett Designs

**BUILDING 2**  
Roof Plan

## A 1.9

Scale: 1/8" = 1'-0"

SEPTEMBER 1, 2006



**GENERAL NOTE**

- General contractor to coordinate all locations of roof penetrations and flash per roofing manufacturer's requirements.
- See all building sections and wall sections for roofing details

**LEGEND**

- ↑ Direction of slope
- R.D. Roof drain, see 8/A5.5 typical
- D.S. Downspout
- × Depth of insulation measured from top of roof deck, for general reference only.
- EPDM roof membrane over tapered rigid insulation
- Wood composite decking over tapered 2x sleeper system, over EPDM roof membrane

**GENERAL CONSTRUCTION NOTES**

- A- Provide & install 1 shelf with 1 rod in all coat and bedroom closets. Walk-in closets to have shelf with rod as shown on plans.
- B- Provide & install 5 wire shelves at all linen storage.
- C- Provide & install 1 wire shelf at all broom and storage closets.
- D- Refer to finish schedule and Unit Plans for all finishes in all rooms
- F- All exposed areas are to be painted unless called otherwise.
- E- When the finish for any room is not called in the Finish Schedule, install same finishes as adjacent space.
- G- If any conflict between drawings coordinate with Architect prior to installation of the Work.
- H- Verify location with Architect prior to installation of all wall mounted elements i.e. electric meters, door bells, signs, mechanical vents, etc.
- I- Refer to these building plans for all chase locations within the units. Coordinate piping locations with plumbing contractor.
- J- All penetrations in fire rated and sound rated assemblies shall be sealed, lined insulated to maintain the required ratings.