

# Pearl Place Building 1 & 2

Portland Maine

Developer

Avesta Pearl  
Street One, L.P.

Architect  
Winton Scott Architects

Landscape Architect  
Carroll Associates

Civil  
Gorrill Palmer  
Consulting Engineers

Structural  
Becker Structural

Mechanical / Plumbing  
Mechanical Systems  
Engineers

Electrical  
Bartlett Designs

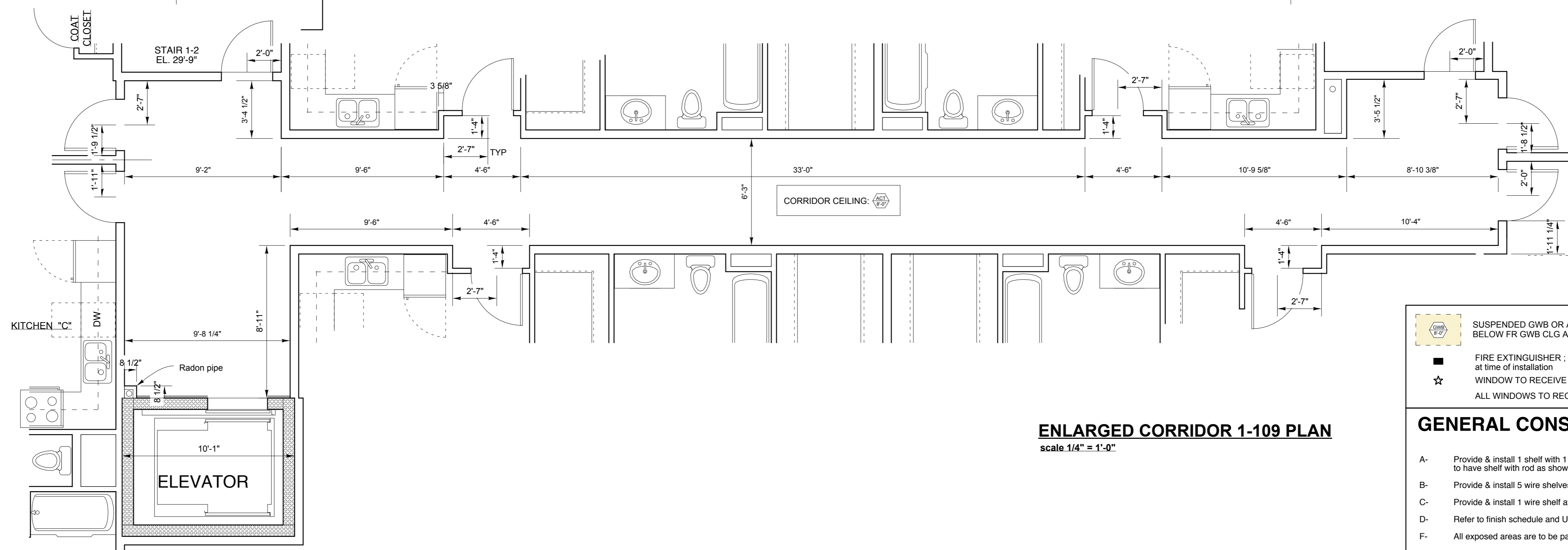
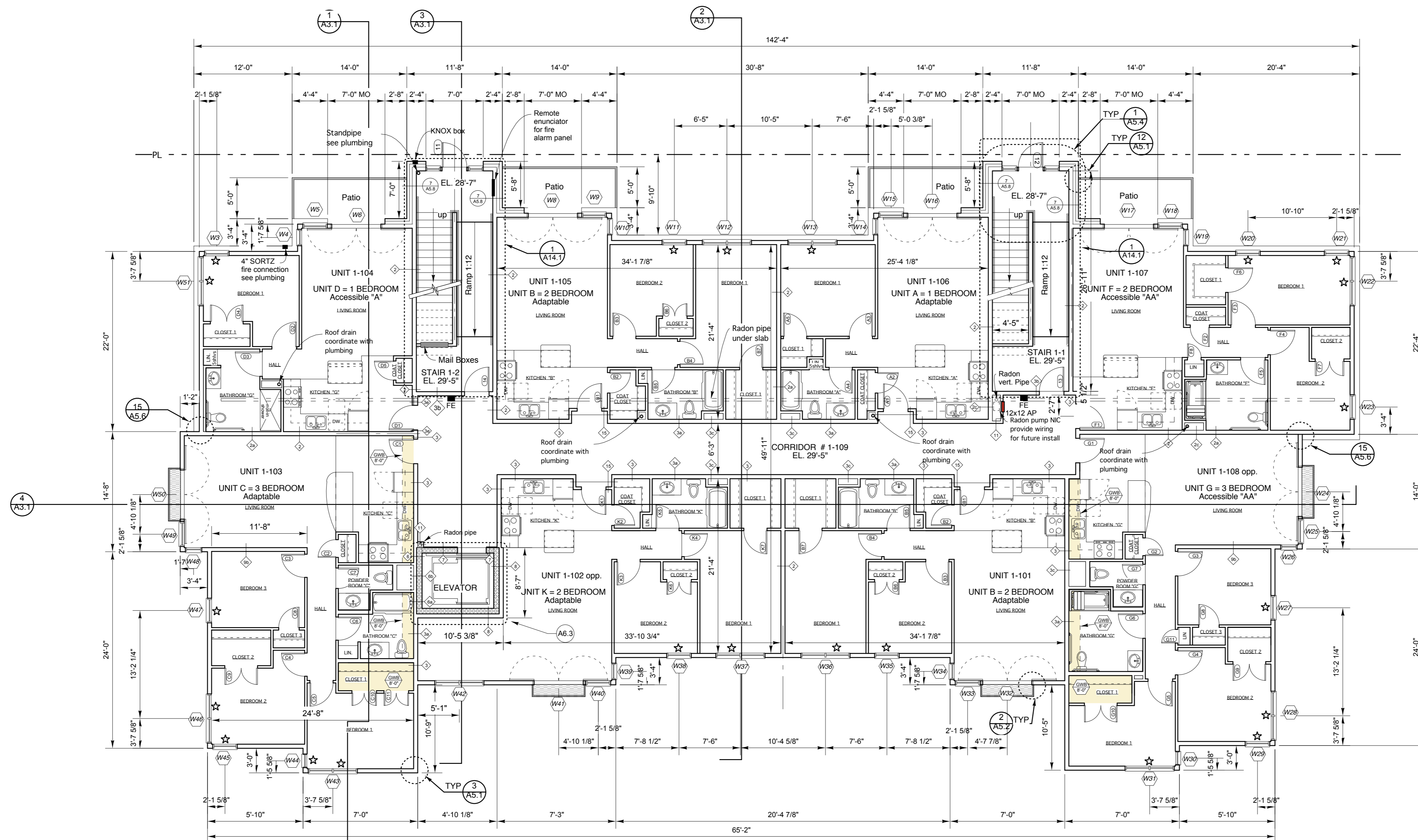
**BUILDING 1**

First  
Floor Plan

# A 1.2

Scale: 1/8" = 1'-0"

SEPTEMBER 1, 2006



**ENLARGED CORRIDOR 1-109 PLAN**  
scale 1/4" = 1'-0"

- SUSPENDED GWB OR ACT CLG. BELOW FR GWB CLG ABV
- FIRE EXTINGUISHER ; verify final location with architect at time of installation
- WINDOW TO RECEIVE SHADES
- ALL WINDOWS TO RECEIVE CURTAIN RODS

**GENERAL CONSTRUCTION NOTES**

- A- Provide & install 1 shelf with 1 rod in all coat and bedroom closets. Walk-in closets to have shelf with rod as shown on plans.
- B- Provide & install 5 wire shelves at all linen storage.
- C- Provide & install 1 wire shelf at all broom and storage closets.
- D- Refer to finish schedule and Unit Plans for all finishes in all rooms.
- F- All exposed areas are to be painted unless called otherwise.
- E- When the finish for any room is not called in the Finish Schedule, install same finishes as adjacent space.
- G- If any conflict between drawings coordinate with Architect prior to installation of the Work.
- H- Verify location with Architect prior to installation of all wall mounted elements i.e. electric meters, door bells, signs, mechanical vents, etc.
- I- Refer to these building plans for all chase locations within the units. Coordinate piping locations with plumbing contractor.
- J- All penetrations in fire rated and sound rated assemblies shall be sealed, lined insulated to maintain the required ratings.