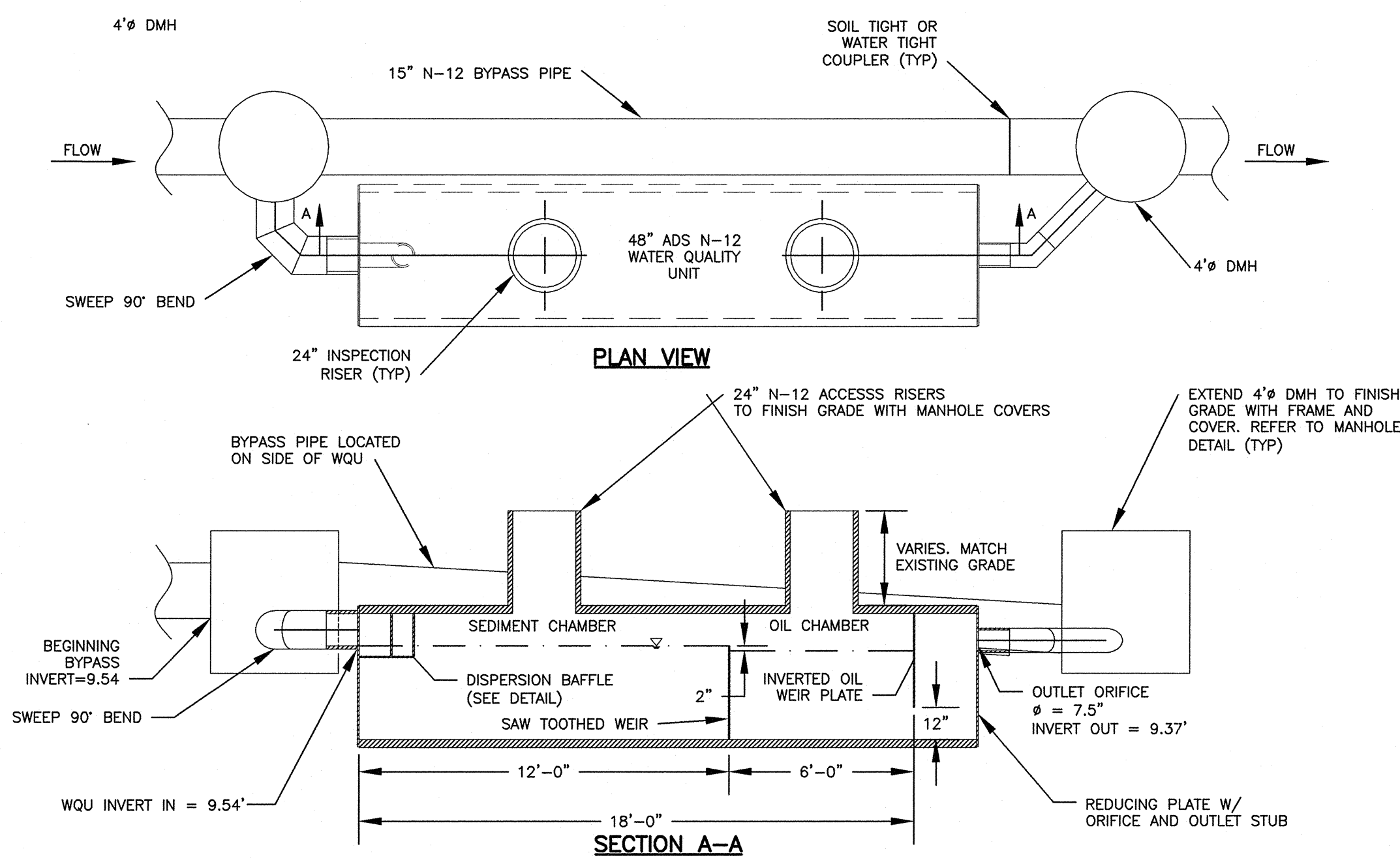


6" PERFORATED UNDERDRAIN PIPE SHALL BE PLACED ON A 3" LAYER OF CRUSHED STONE INCLUDING UNDERDRAIN. CRUSHED STONE SHALL BE WRAPPED IN GEOTEXTILE FILTER FABRIC (MIRAFI 140 OR EQUIVALENT).

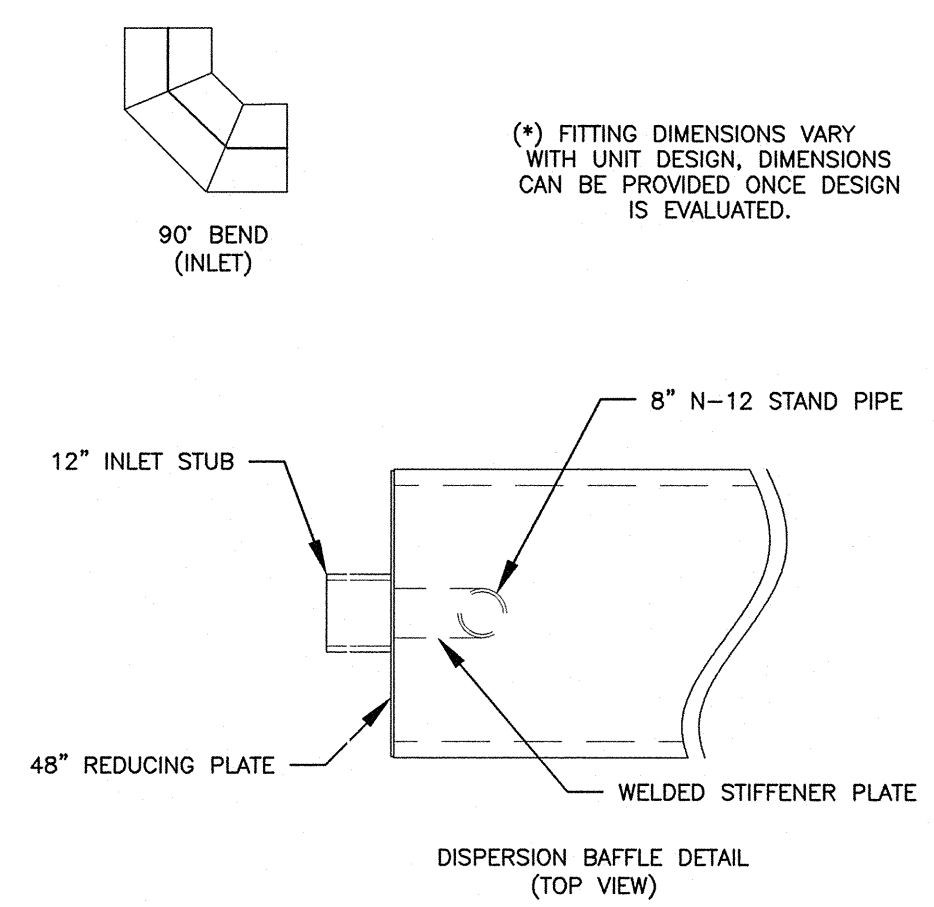
FOUNDATION UNDERDRAIN
N.T.S.

NOTE:
CONTRACTOR SHALL COORDINATE CONNECTIONS FROM INTERNAL FOUNDATION DRAINS TO THE EXTERNAL DRAIN PIPING AND STORM DRAIN CONNECTIONS WITH BUILDING AND FOUNDATION CONTRACTORS.

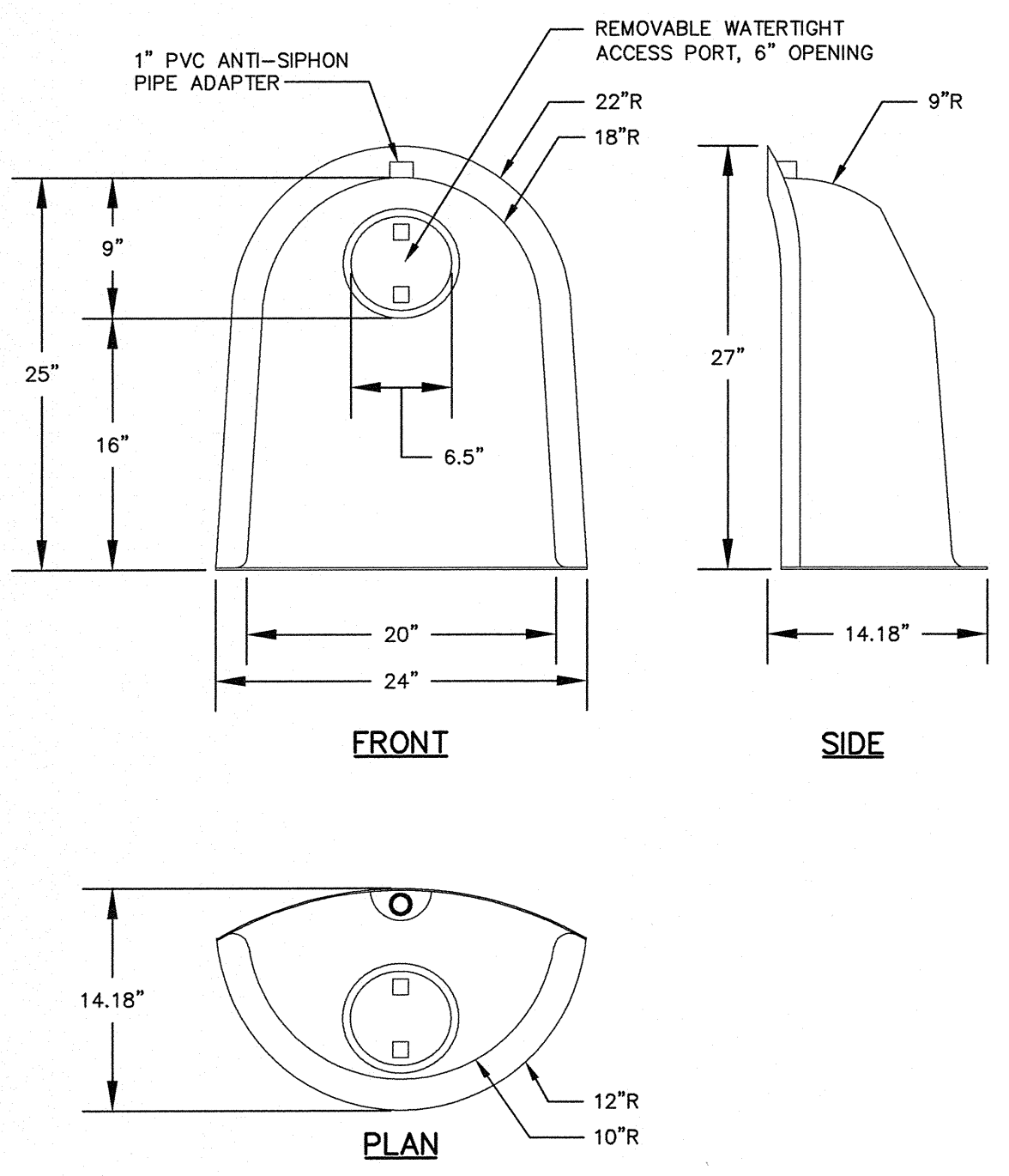


ADS HDPE STANDARD WATER QUALITY UNIT
(FABRICATED INLET & OUTLET)

N.T.S.

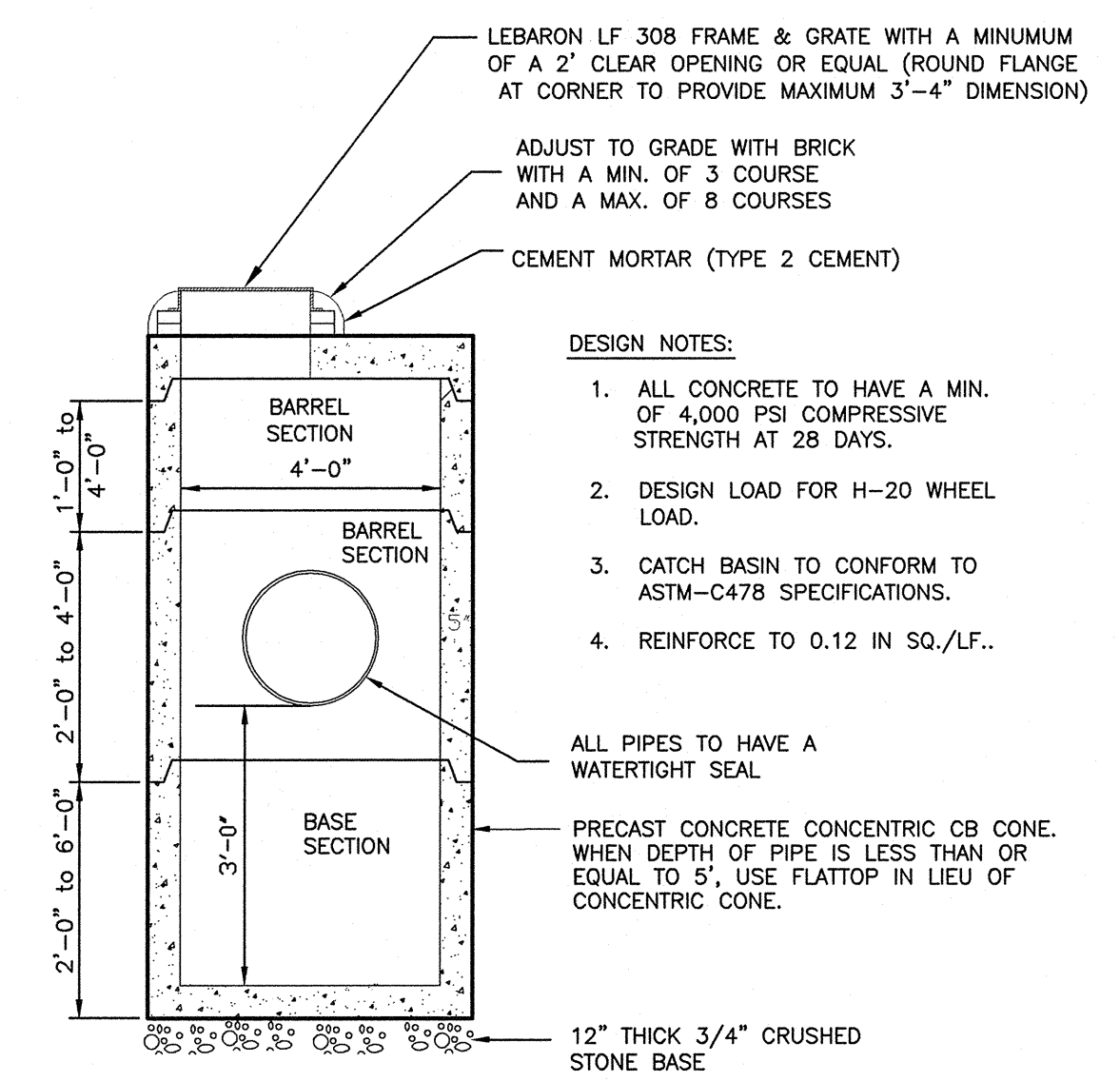


- NOTES:
- PLEASE ACCOUNT FOR FALL FROM THE BEGINNING BY-PASS INLET INVERT TO BY-PASS OUTLET INVERT. CONSULT YOUR ADS REPRESENTATIVE FOR THE SLOPE IN THE BY-PASS.
 - BY-PASS FITTINGS COUPLER CONNECTION SHALL UTILIZE THE SAME COUPLERS AS THE STORM SEWER LINE.
 - UNITS GREATER THAN 20 FEET WILL BE FIELD CONNECTED USING AN INLINE WT BELL AND SPIGOT JOINT. PROPERLY LUBE THE BELL AND SPIGOT GASKET PRIOR TO ASSEMBLY.



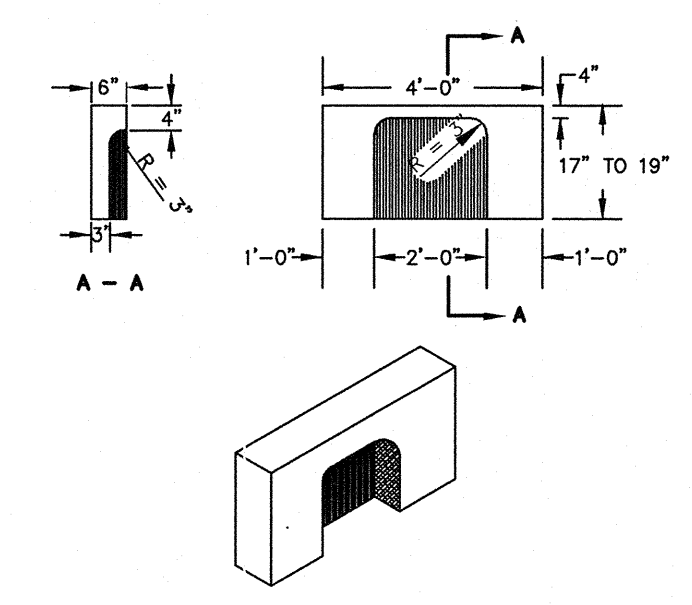
"THE SNOUT"
N.T.S.

- NOTES:
- SIZE 18R REQUIRED FOR 12" AND 15" PIPES.
 - INSTALL IN ACCORDANCE WITH MANUFACTURER'S SPECIFICATIONS.



4'-0" PRECAST CATCH BASIN
N.T.S.

- NOTE:
- INLET HOODS SHALL BE PROVIDED ON CATCH BASIN PIPES 18" OR LESS



TYPICAL A-4 CATCH BASIN STONE
N.T.S.

**Pearl Place
Building 1 & 2
Portland, Maine**

Developer
Avesta Pearl Street One,
L.P.

Architect
Winton Scott Architects

Landscape Architect
Carroll Associates

Civil
Gorill Palmer Consulting
Engineers

Structural
Becker Structural

Mechanical / Plumbing
Mechanical Systems
Engineers

Electrical
Bartlett Designs

BUILDINGS 1 & 2

**DRAINAGE
DETAILS**

C-4

Scale: NTS

September 1, 2006

S:\Land Project\118102\DWG\118102-04-DETAILS.dwg, C:\DRAIN DET, 18/12/2006 11:58:55 AM, harskellm, Gorill Palmer Consulting Engineers, Inc.