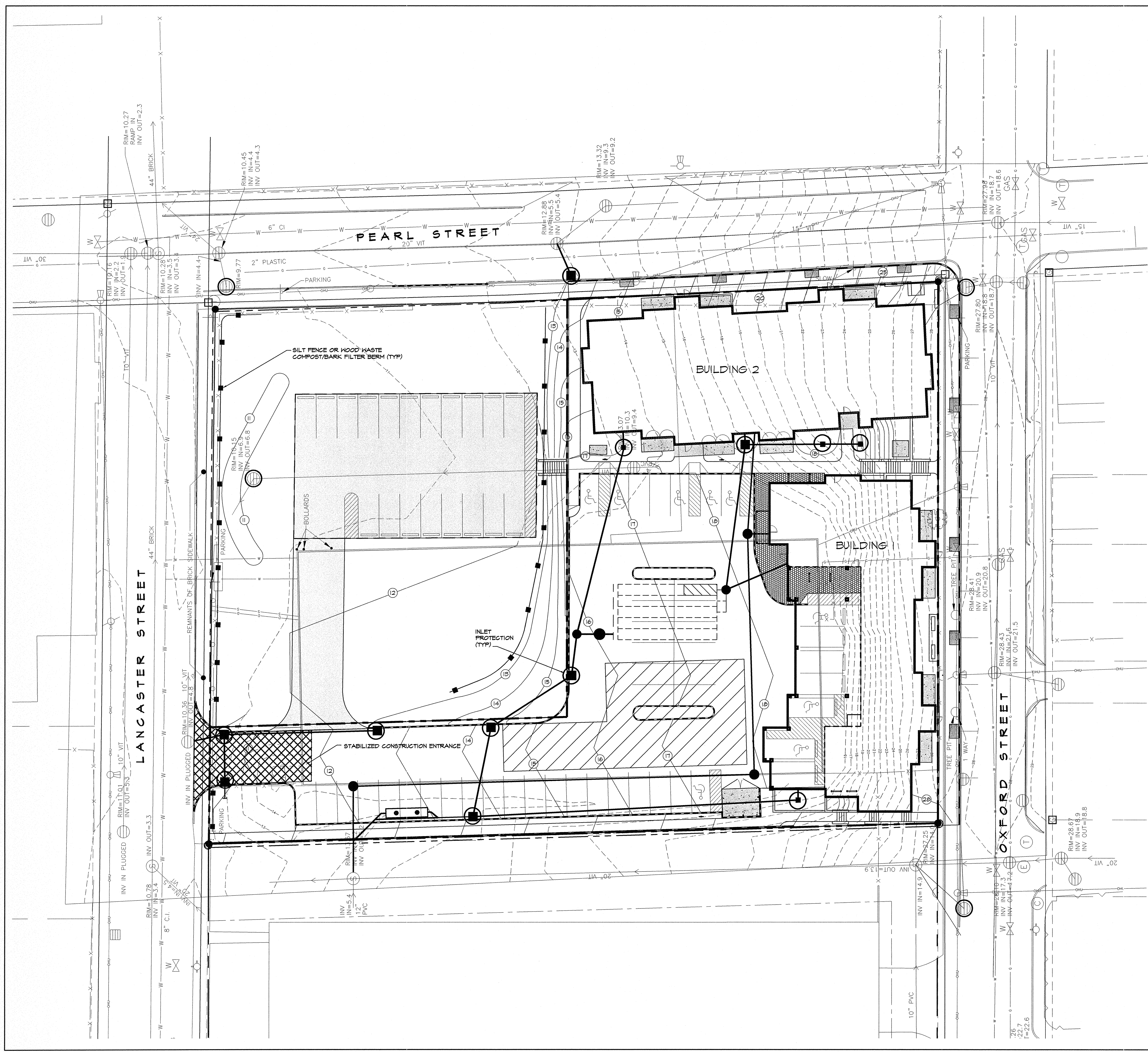


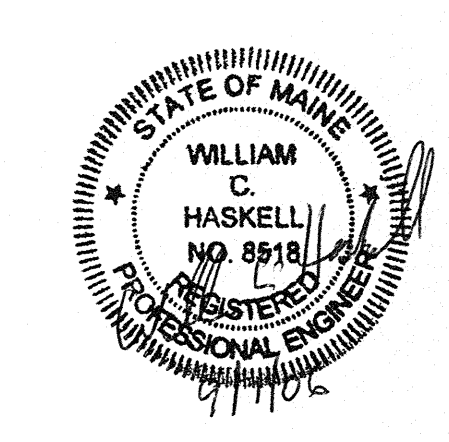
S:\land Projects\1183_02\wp1183_02_GF-EROSION.dwg, C-3 EROSION, 8/31/2006 11:03:53 AM, 1:1, GLL



LEGEND

EXISTING GRADE	- - - - -
FINISH GRADE	— — — — —
BITUMINOUS PAVEMENT	[Hatched pattern]
BRICK WALK	[Brick pattern]
BITUMINOUS SIDEWALK	[Hatched pattern]
CROSSWALK	[Crosswalk symbol]
PROPERTY LINE	[Dashed line]
EASEMENT	[Dashed line]
NEW CB, FI	[Square symbol]
NEW TRANSFORMER	[Square symbol]
NEW SEWER MANHOLE	[Square symbol]
NEW STORM DRAIN	[Line symbol]
NEW UNDERGROUND ELEC.	[Line symbol]
NEW WATER	[Line symbol]
NEW GAS	[Line symbol]
NEW FOUNDATION DRAIN	[Line symbol]
NEW SEWER	[Line symbol]
STORM DRAIN INLET PROTECTION	[Circle symbol]
SILT FENCE	[Line symbol]

- NOTES:**
- REFER TO DRAWING C-6 FOR EROSION AND SEDIMENTATION CONTROL DETAILS AND NOTES.
 - ALL SLOPES STEEPER THAN 3:1 SHALL BE PROTECTED WITH CURLEX BLANKETS BY AMERICAN EXCELSIOR. INSTALL IN ACCORDANCE WITH MANUFACTURER'S SPECIFICATIONS.
 - FOR TEMPORARY STABILIZATION INSTALL TENAX MULTIMAT FABRIC ON ALL SLOPES EQUAL TO OR STEEPER THAN 2% BETWEEN OCTOBER 1 AND APRIL 15 AND EQUAL TO OR STEEPER THAN 15% BETWEEN APRIL 15 AND OCTOBER 1. INSTALL IN ACCORDANCE WITH MANUFACTURER'S SPECIFICATIONS.
 - CONTRACTOR SHALL MINIMIZE FUGITIVE DUST EMISSIONS BY SWEEEPING THE ADJACENT STREETS AS REQUIRED AND BY APPLYING WATER OR OTHER ENVIRONMENTALLY SOUND DUST CONTROL SOLUTION (CALCIUM CHLORIDE) ON SITE AS REQUIRED.



Pearl Place Building 1 & 2 Portland, Maine

Developer
Avesta Pearl Street One, L.P.

Architect
Winton Scott Architects

Landscape Architect
Carroll Associates

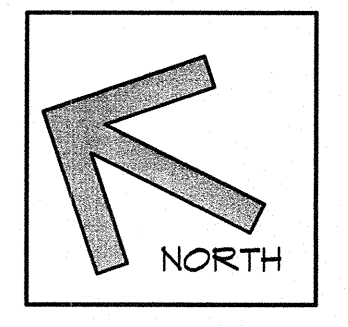
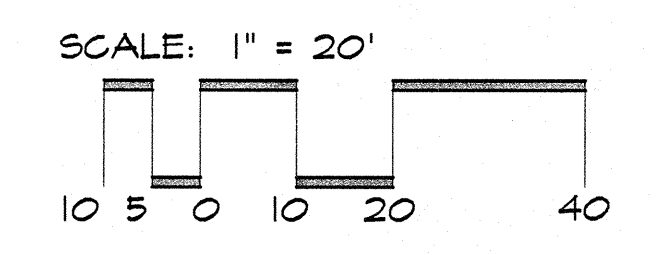
Civil
Gorill Palmer Consulting Engineers

Structural
Becker Structural

Mechanical / Plumbing
Mechanical Systems Engineers

Electrical
Bartlett Designs

BUILDINGS 1 & 2
EROSION AND SEDIMENTATION CONTROL PLAN
C-3
Scale: 1"=20'
September 1, 2006



NOTE: THIS PLAN SET IS ISSUED FOR BIDDING PURPOSES AND SHALL NOT BE USED FOR CONSTRUCTION.