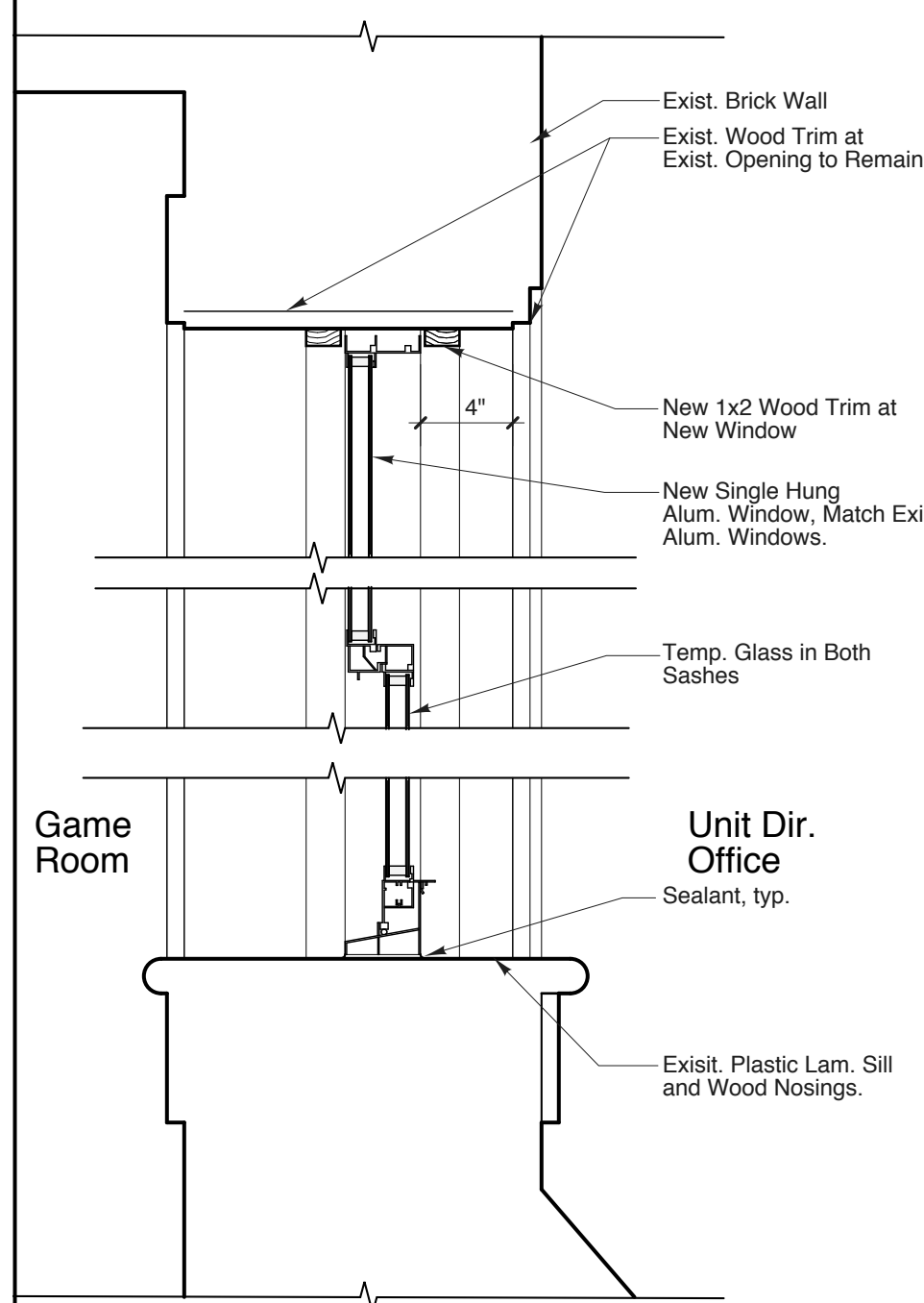
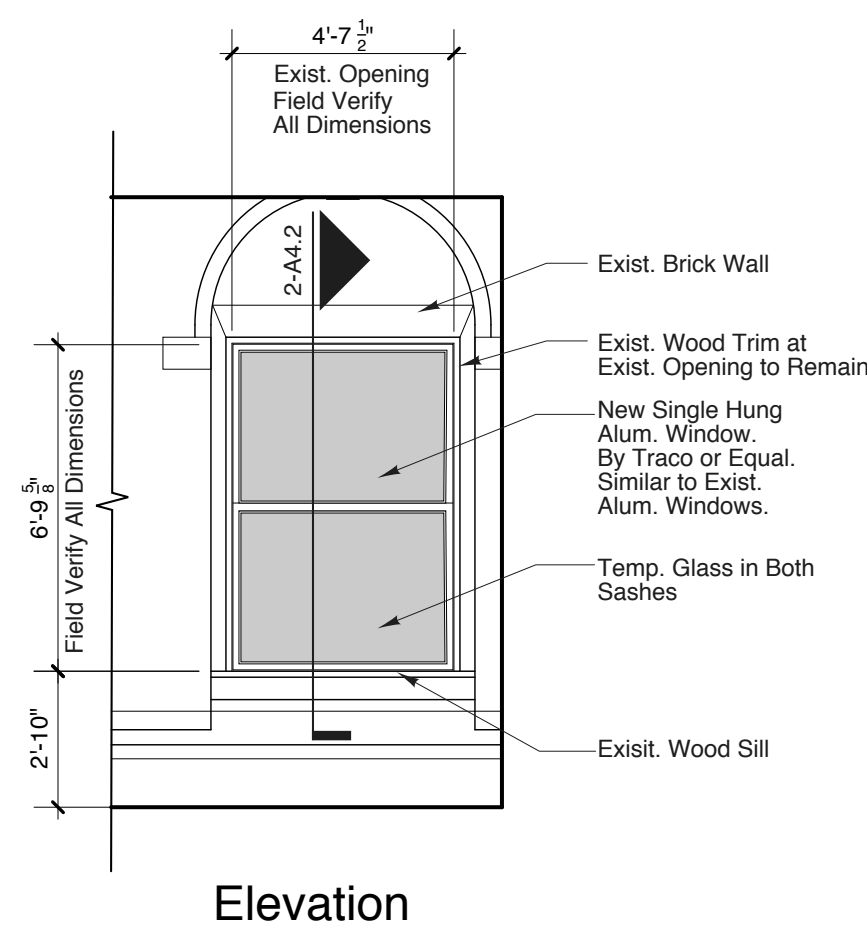


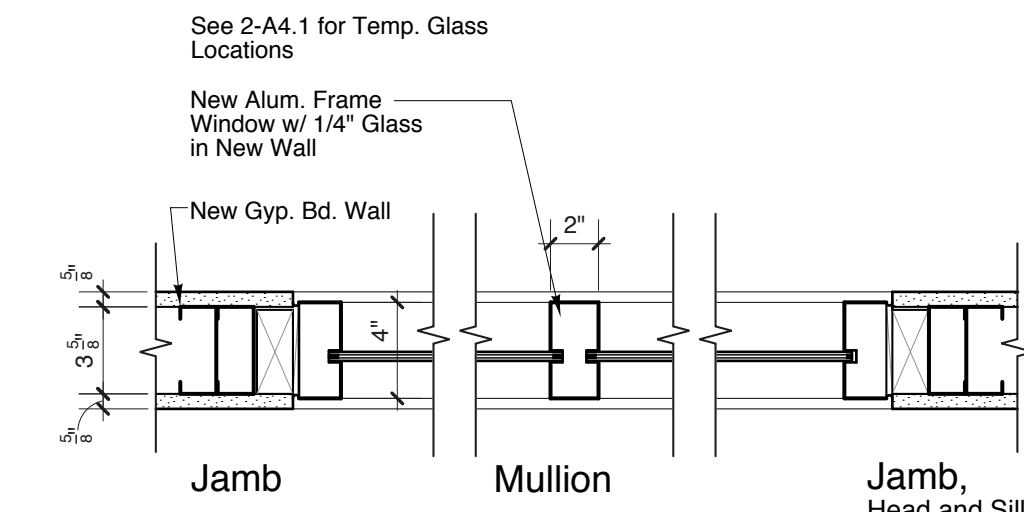
**1 ADD ALTERNATE #3  
New Closet on Existing Cabinets**  
SCALE: 1 1/2" = 1'-0"  
See Floor Plan 1-A1.1 and Int. Elevation 1-A4.1



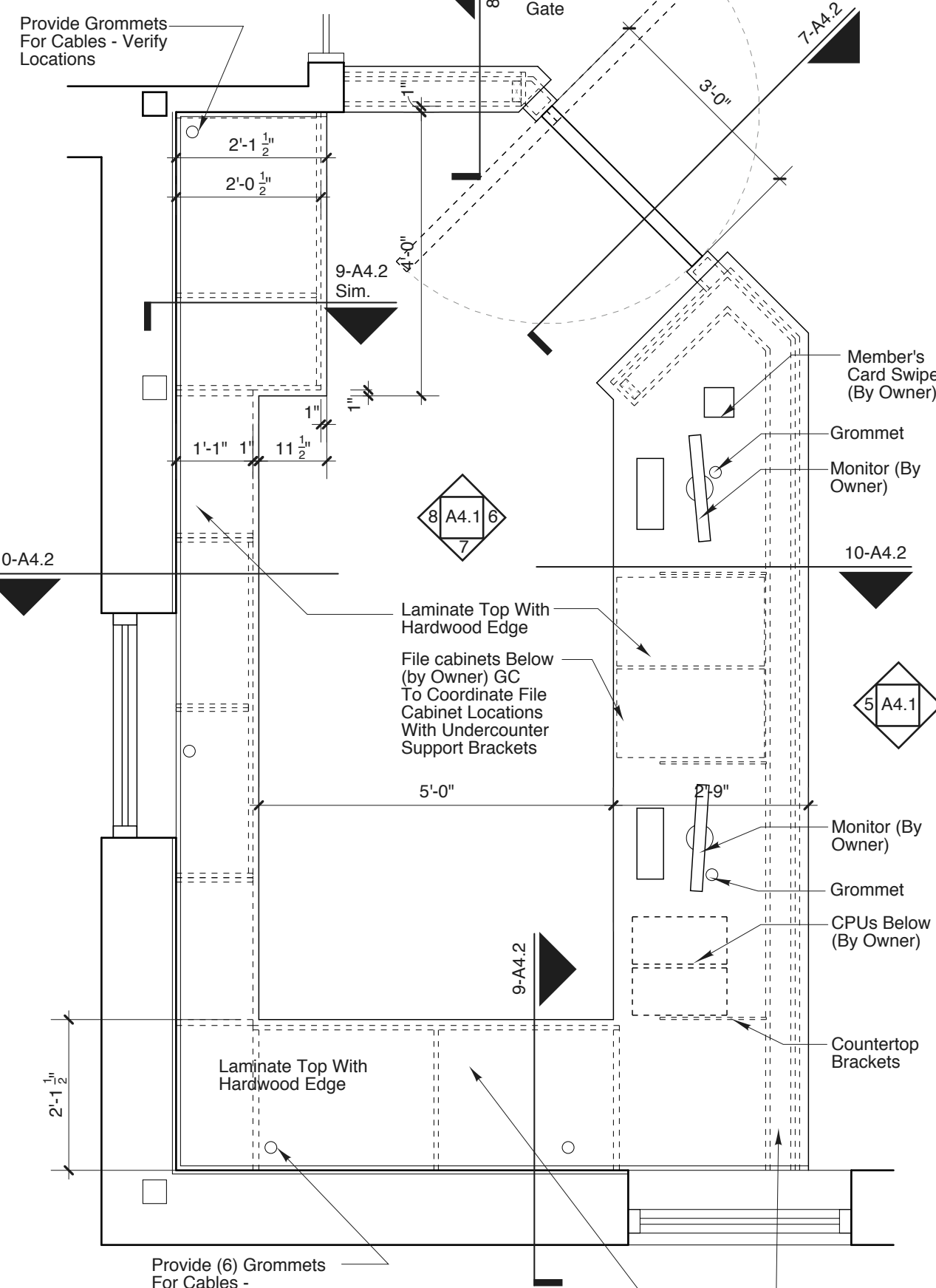
**2 New Interior Single Hung Window**  
SCALE: 1 1/2" = 1'-0"



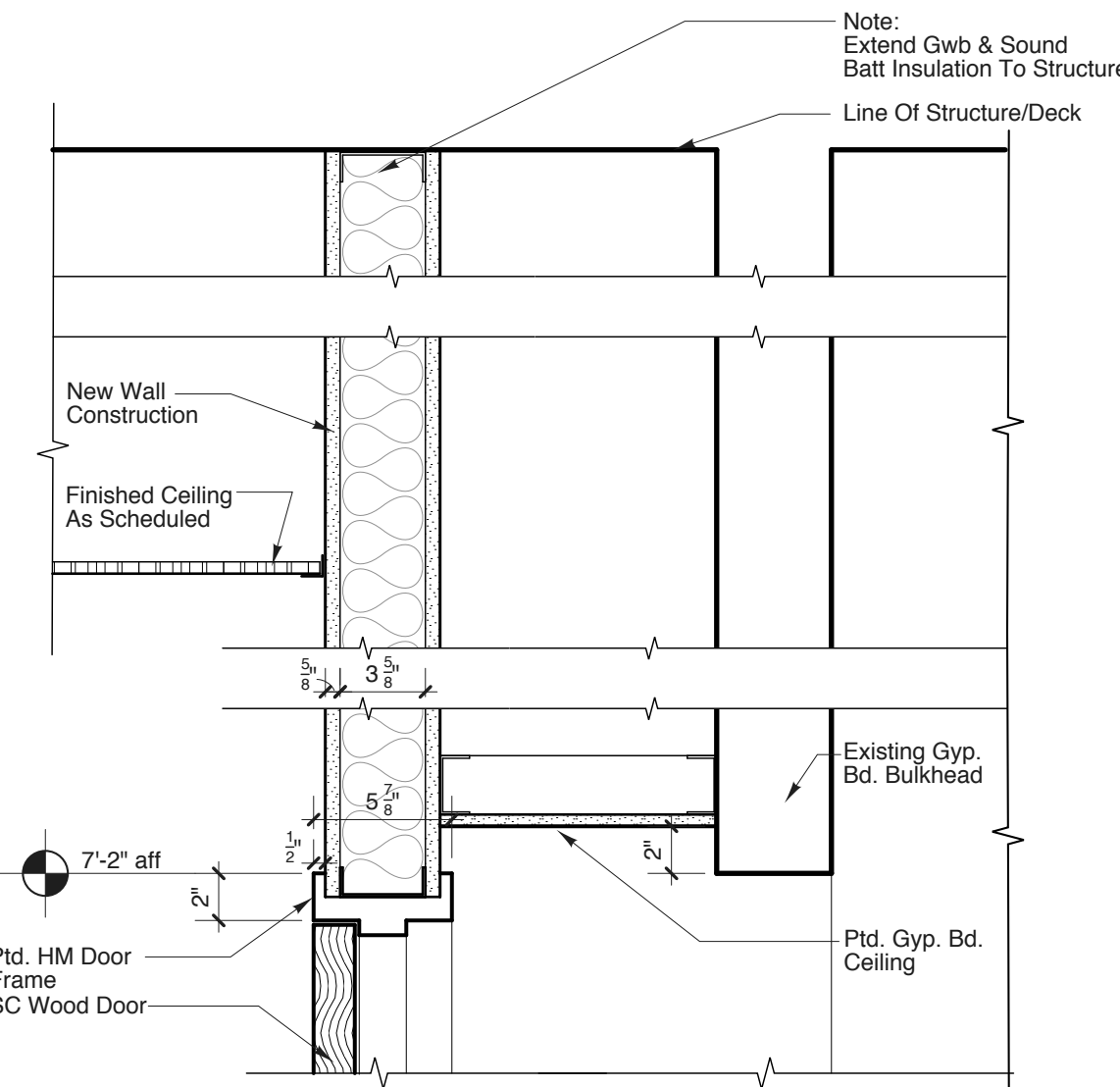
**3 New Single Hung Window at Unit Director's Office**  
SCALE: 1/4" = 1'-0"



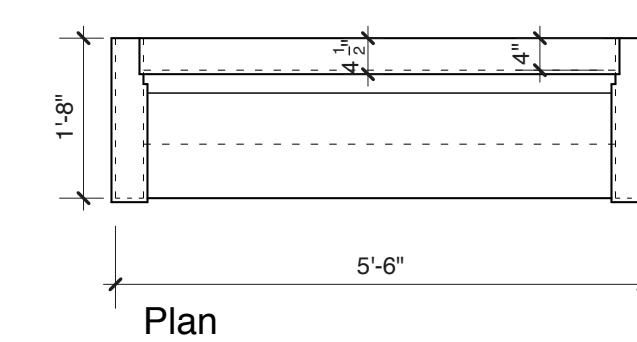
**13 New Fixed Alum. Window Details**  
SCALE: 1 1/2" = 1'-0"



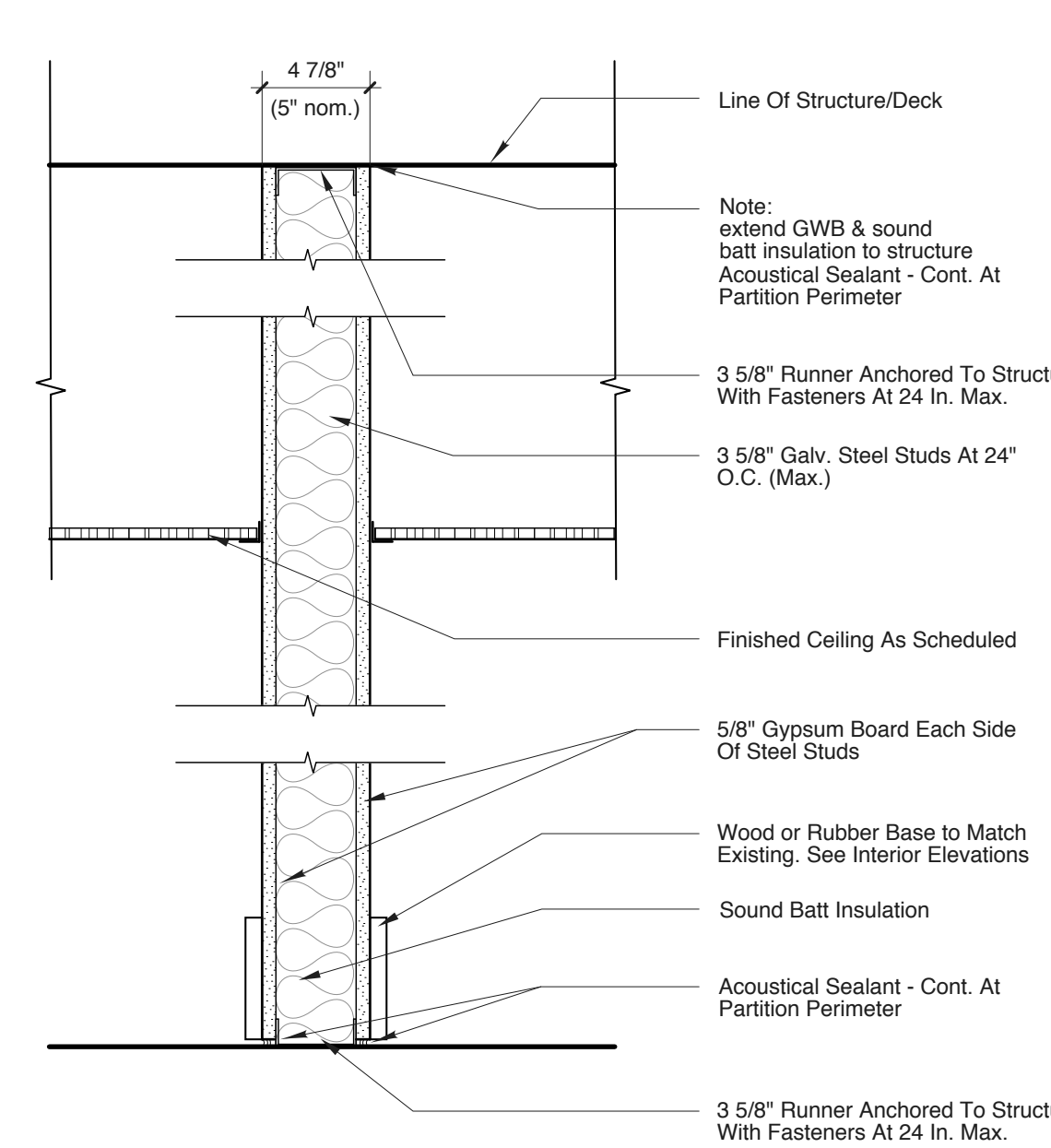
**4 Enlarged Control Desk Plan**  
SCALE: 1/2" = 1'-0"



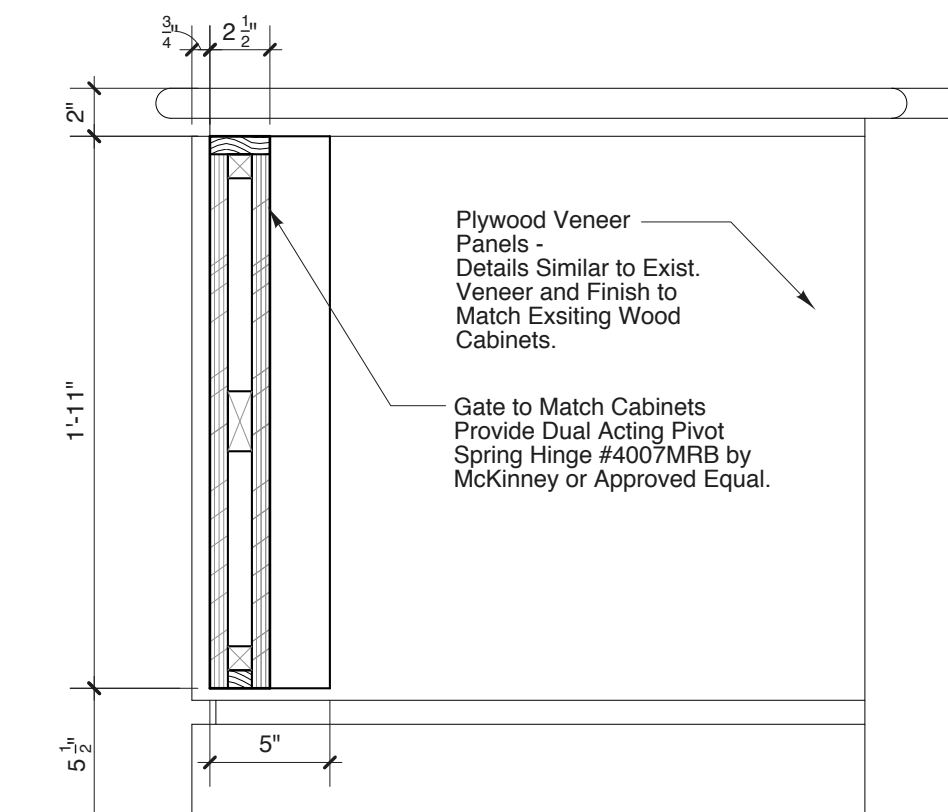
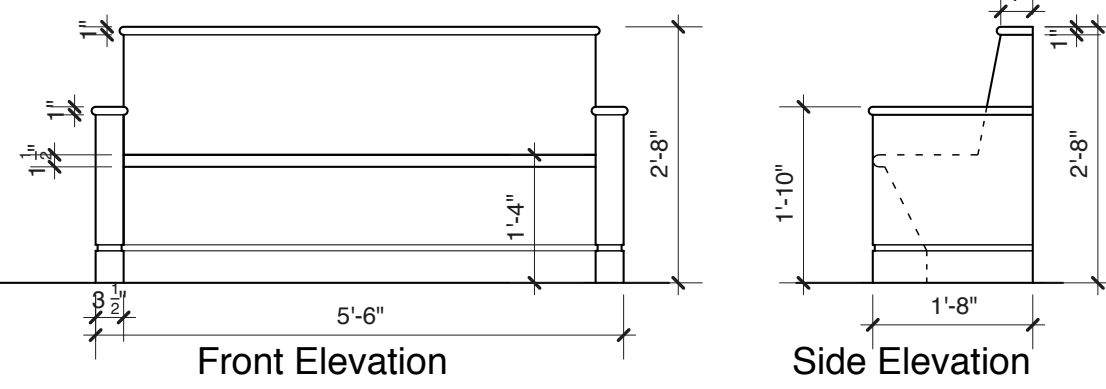
**5 Door Head Detail At PAL Office**  
SCALE: 1 1/2" = 1'-0"



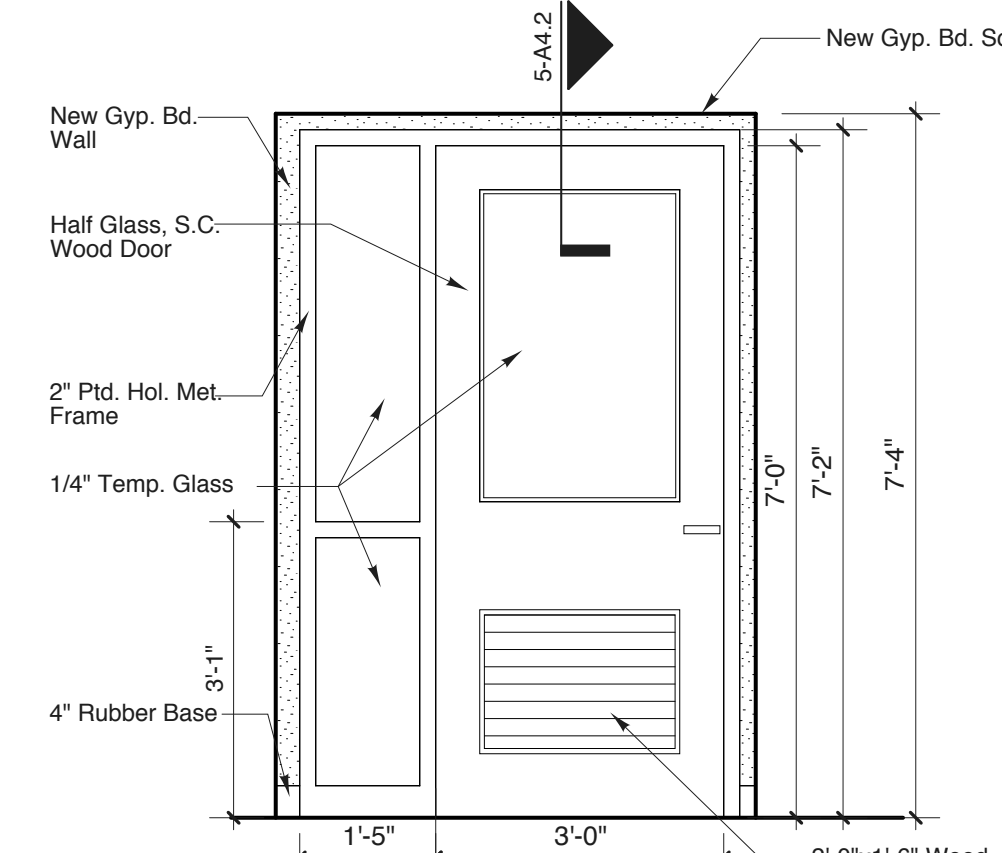
**14 ADD ALTERNATE #1 - Wood Bench**  
SCALE: 1/2" = 1'-0"



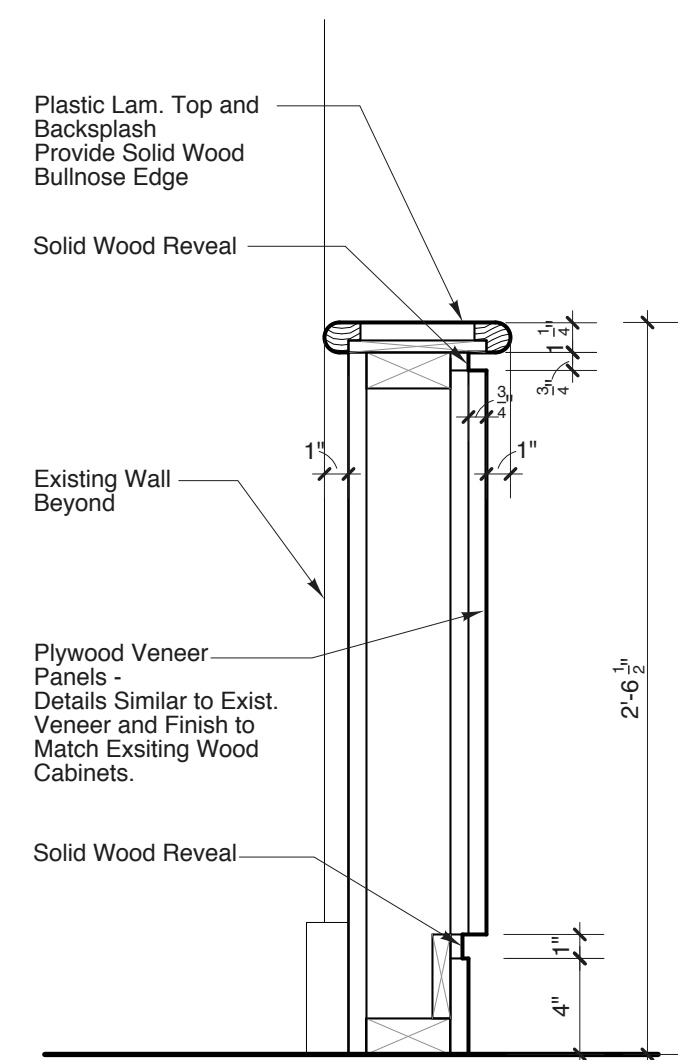
**6 Typ. New Metal Stud Partition (Interior)**  
SCALE: 1 1/2" = 1'-0"



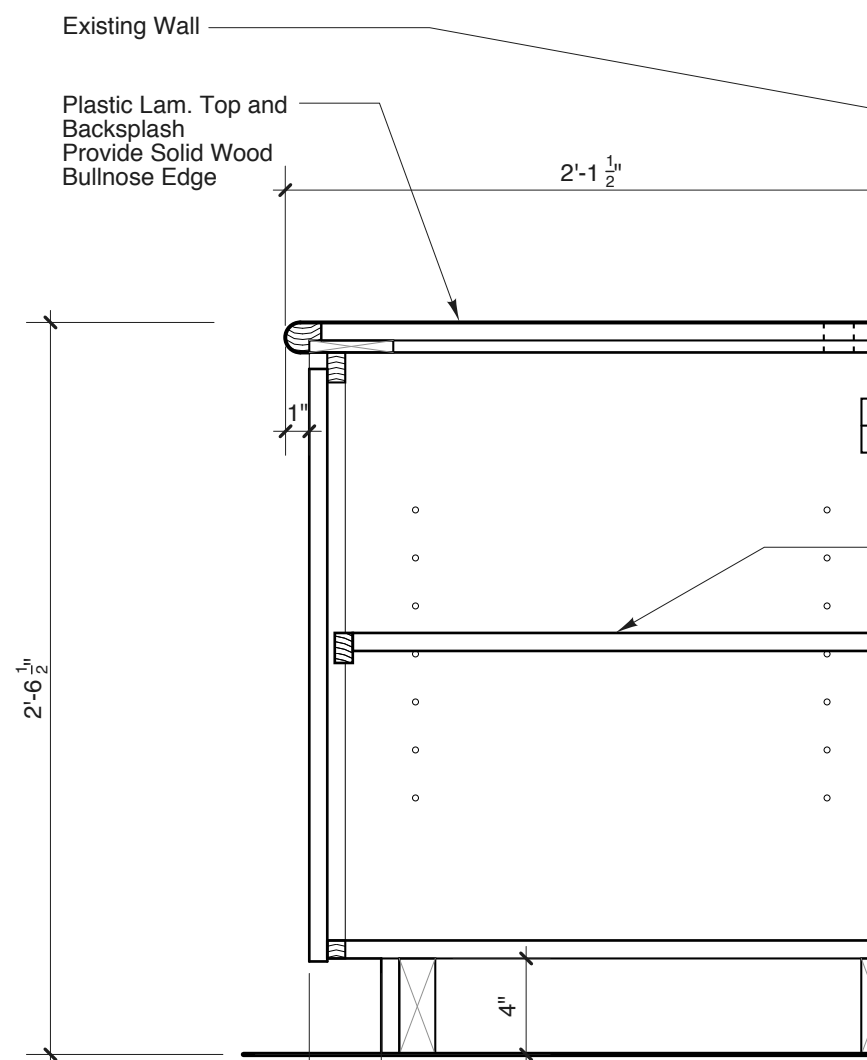
**7 Gate Detail At Control Desk**  
SCALE: 1 1/2" = 1'-0"



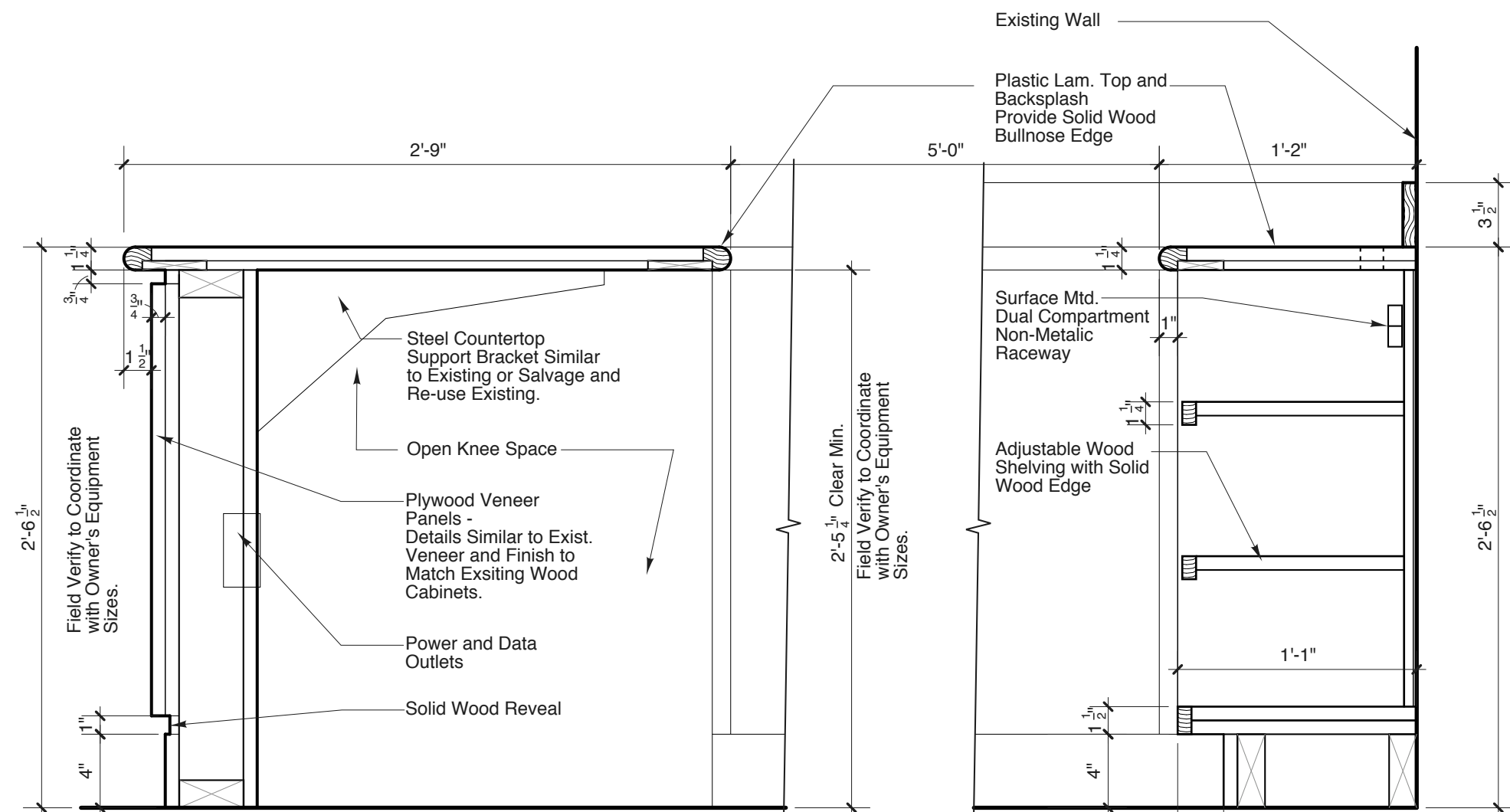
**11 PAL Office Door**  
SCALE: 1/2" = 1'-0"



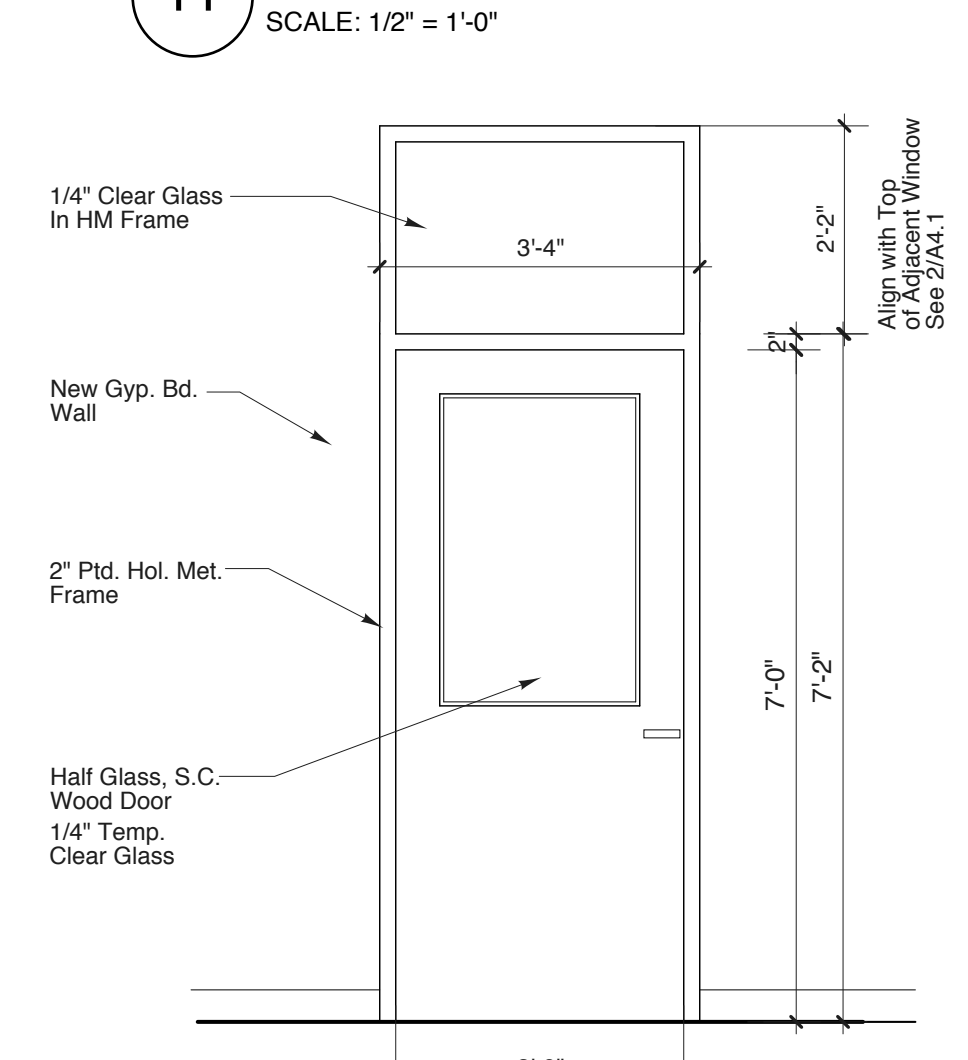
**8 Low Wall at Gate Section**  
SCALE: 1 1/2" = 1'-0"



**9 Control Desk Base Cabinet Section**  
SCALE: 1 1/2" = 1'-0"

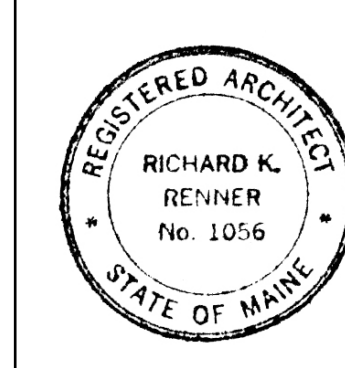


**10 Control Desk Section**  
SCALE: 1 1/2" = 1'-0"



**12 Unit Director Office Door**  
SCALE: 1/2" = 1'-0"

**Richard Renner/Architects**  
96 Pleasant Street  
Portland, ME 04101  
207.773.9699  
207.773.9599 fax



**Issued For Bidding  
03-15-2012**

**Boys & Girls Clubs of  
Southern Maine  
Portland Clubhouse  
Lobby Renovations**  
Portland, Maine

**Interior Elevations**  
Drawn by: RRA  
Scale: As Shown  
Date: 03/15/12

File Name: drawing name  
Project No. 2011-00.00  
Revised:

**Boys & Girls  
Club -  
Portland, ME**  
**A4.2**