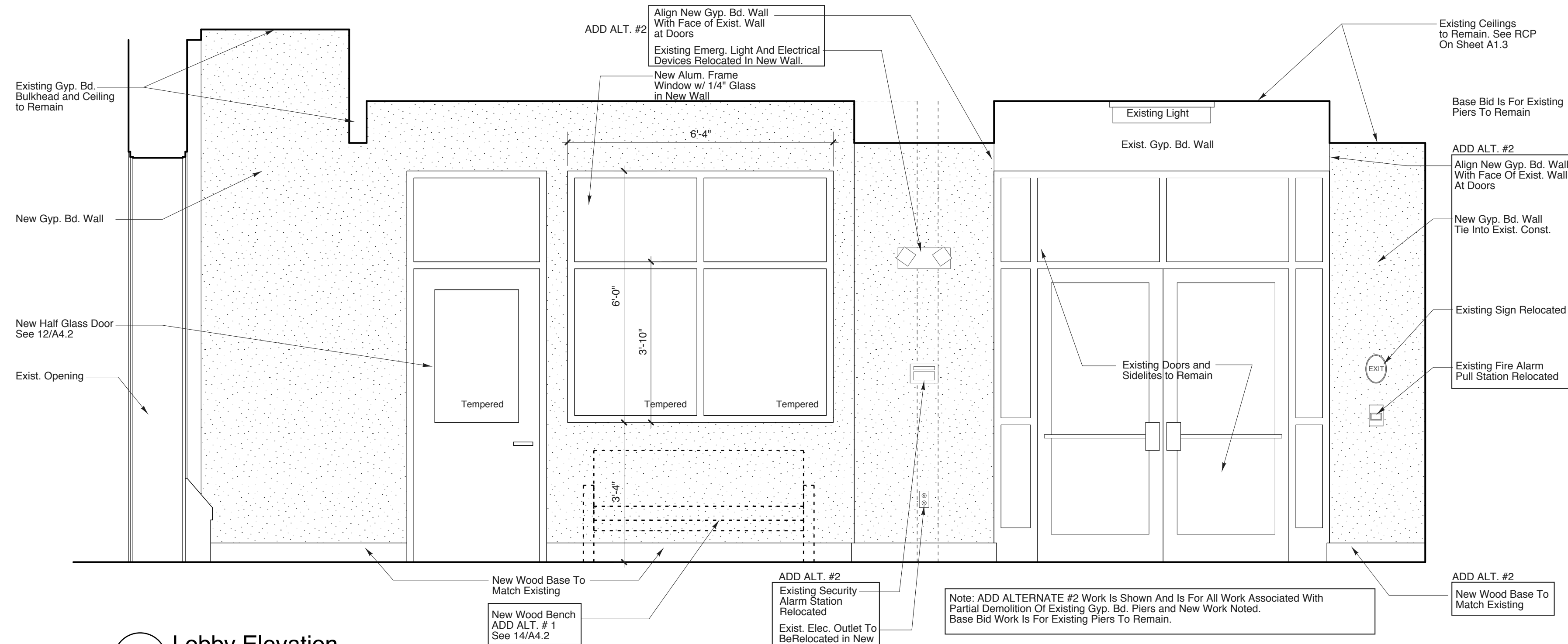
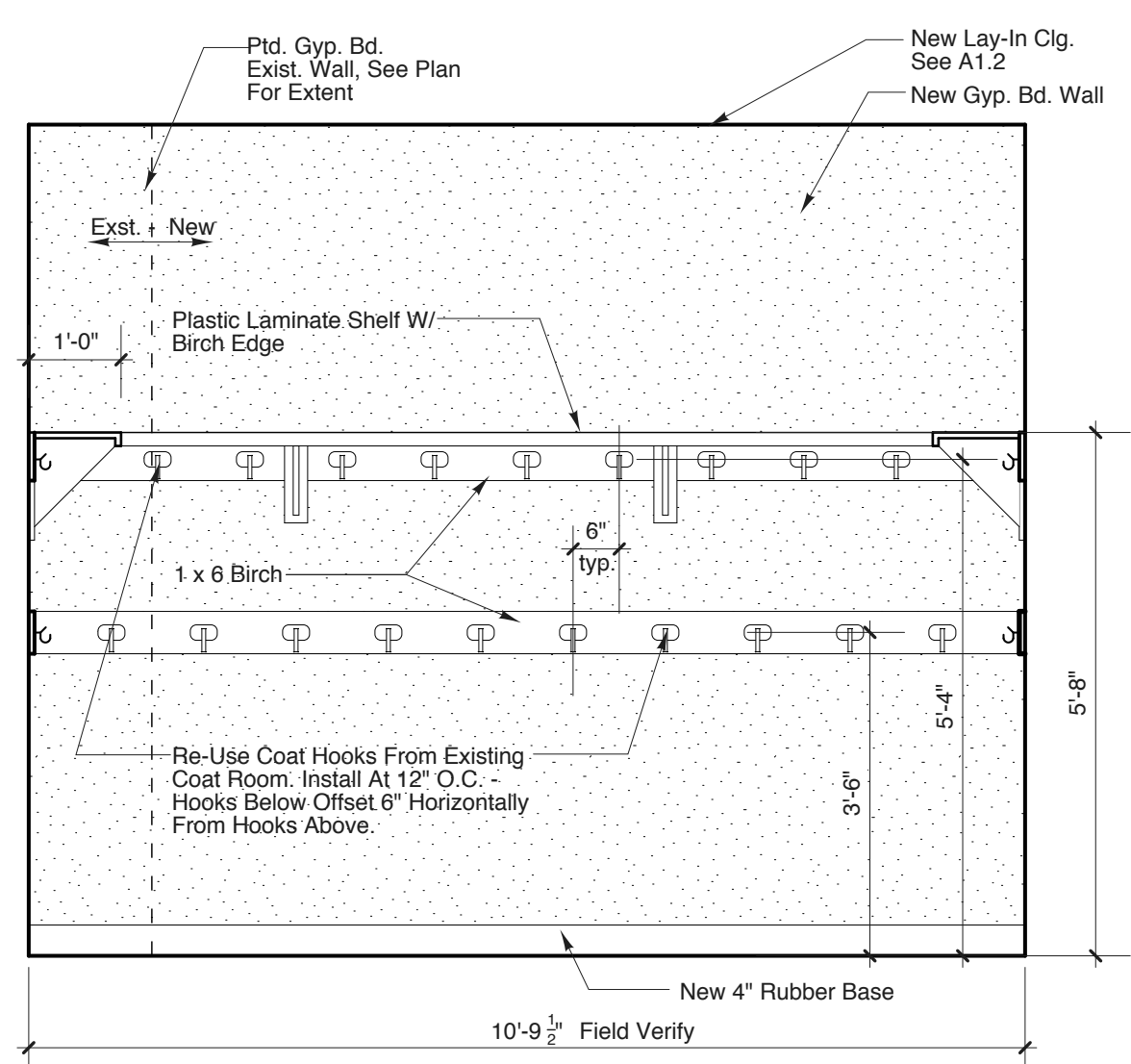


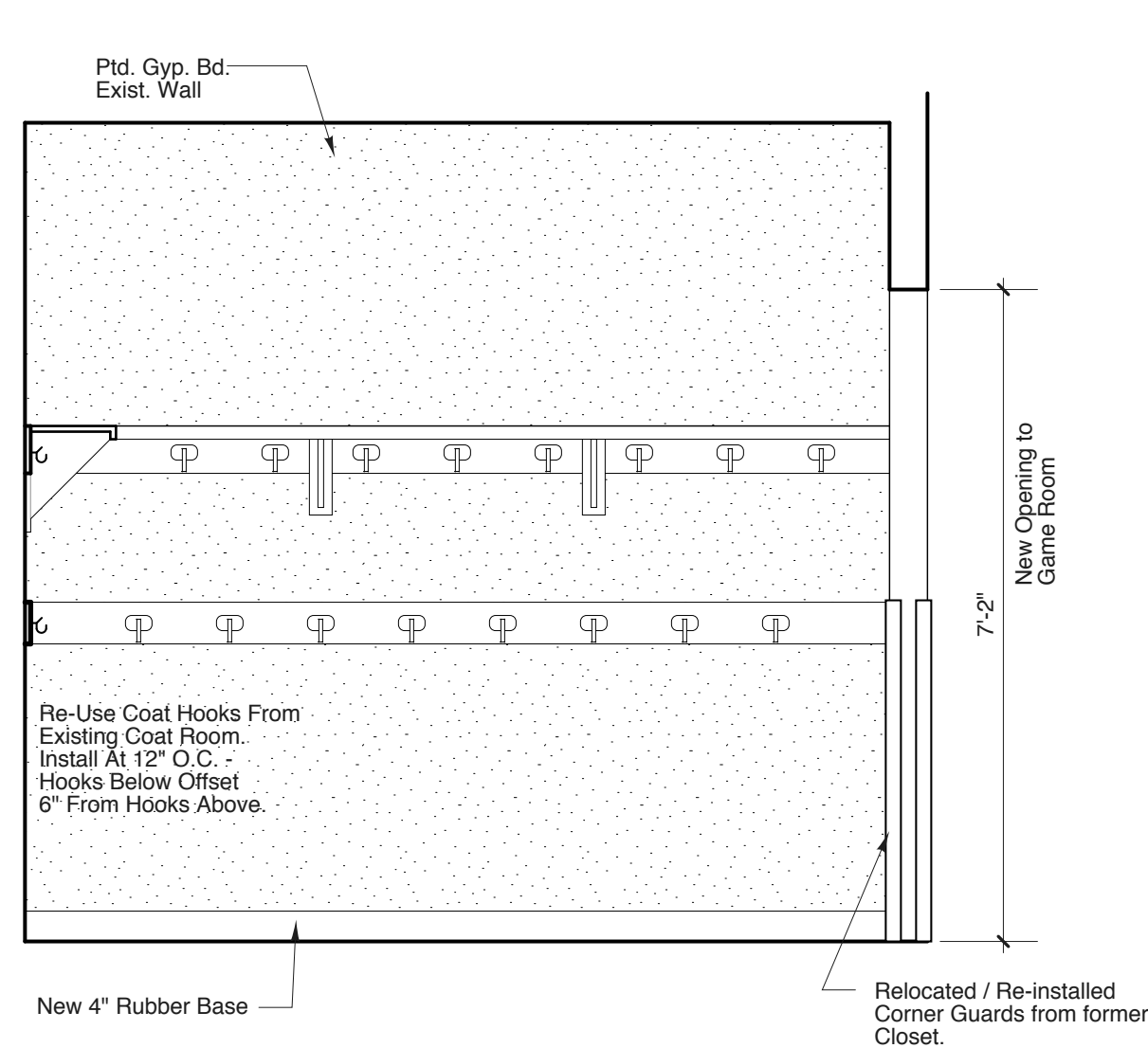
**1 New Office Elevation**  
SCALE: 1/2" = 1'-0" Looking East



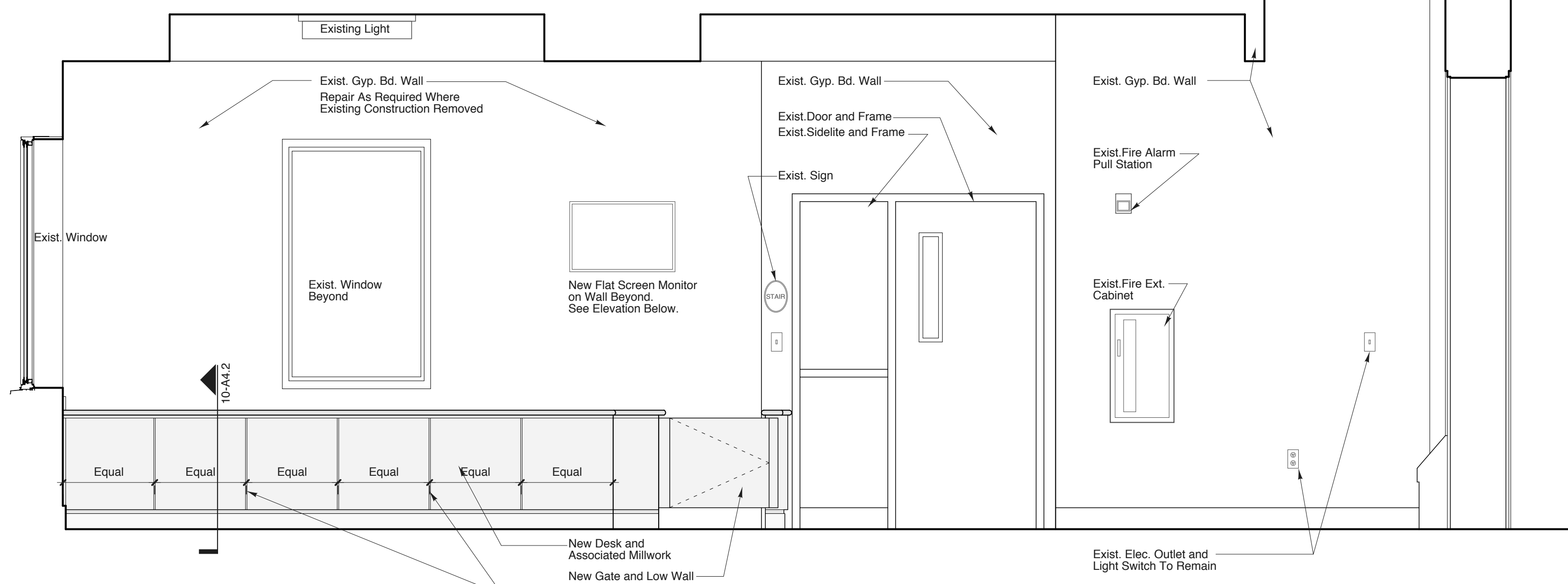
**2 Lobby Elevation**  
SCALE: 1/2" = 1'-0" Looking East



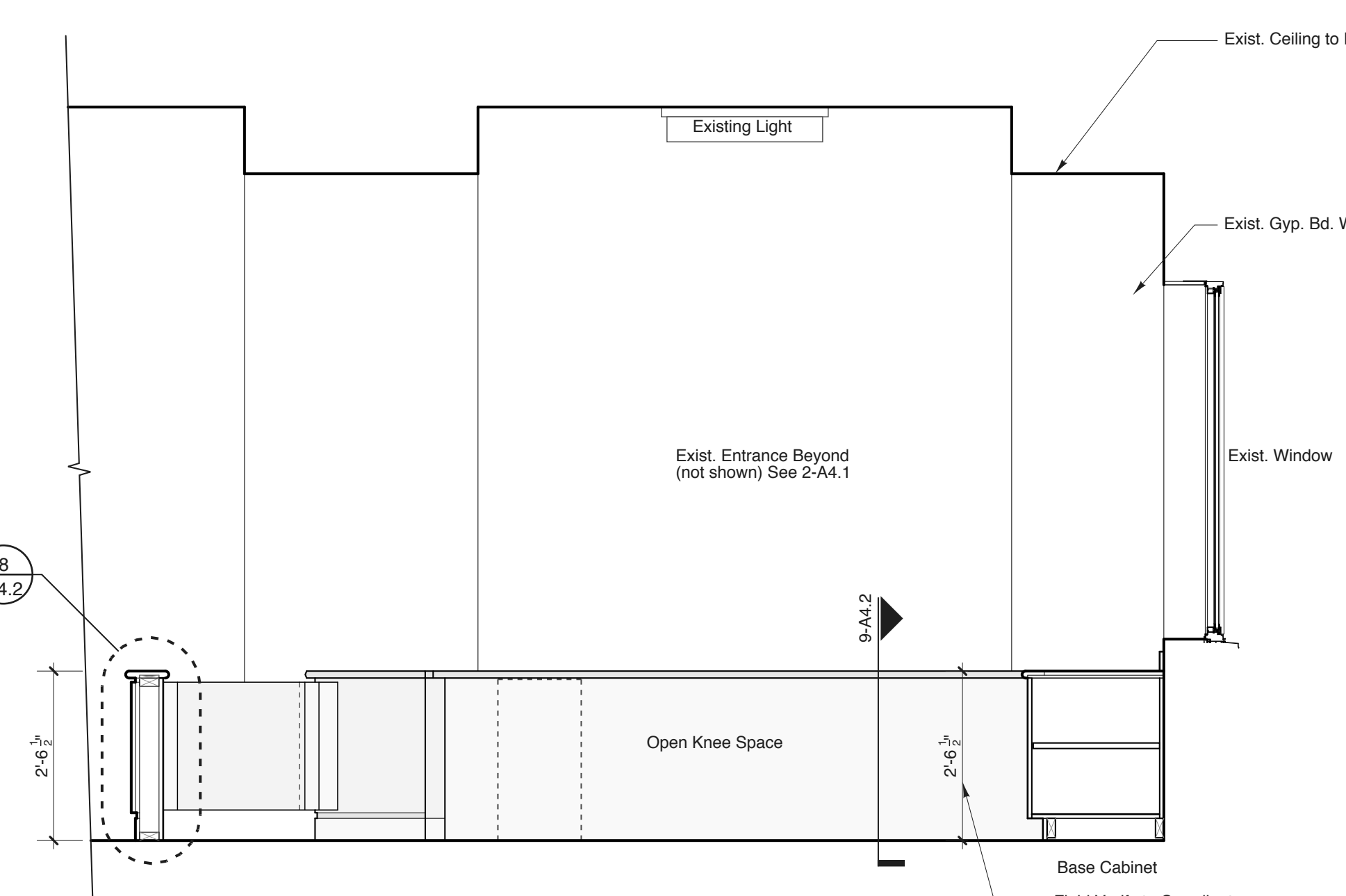
**3 New Coat Room Elevation**  
SCALE: 1/2" = 1'-0" Looking West to Back Of Coatroom



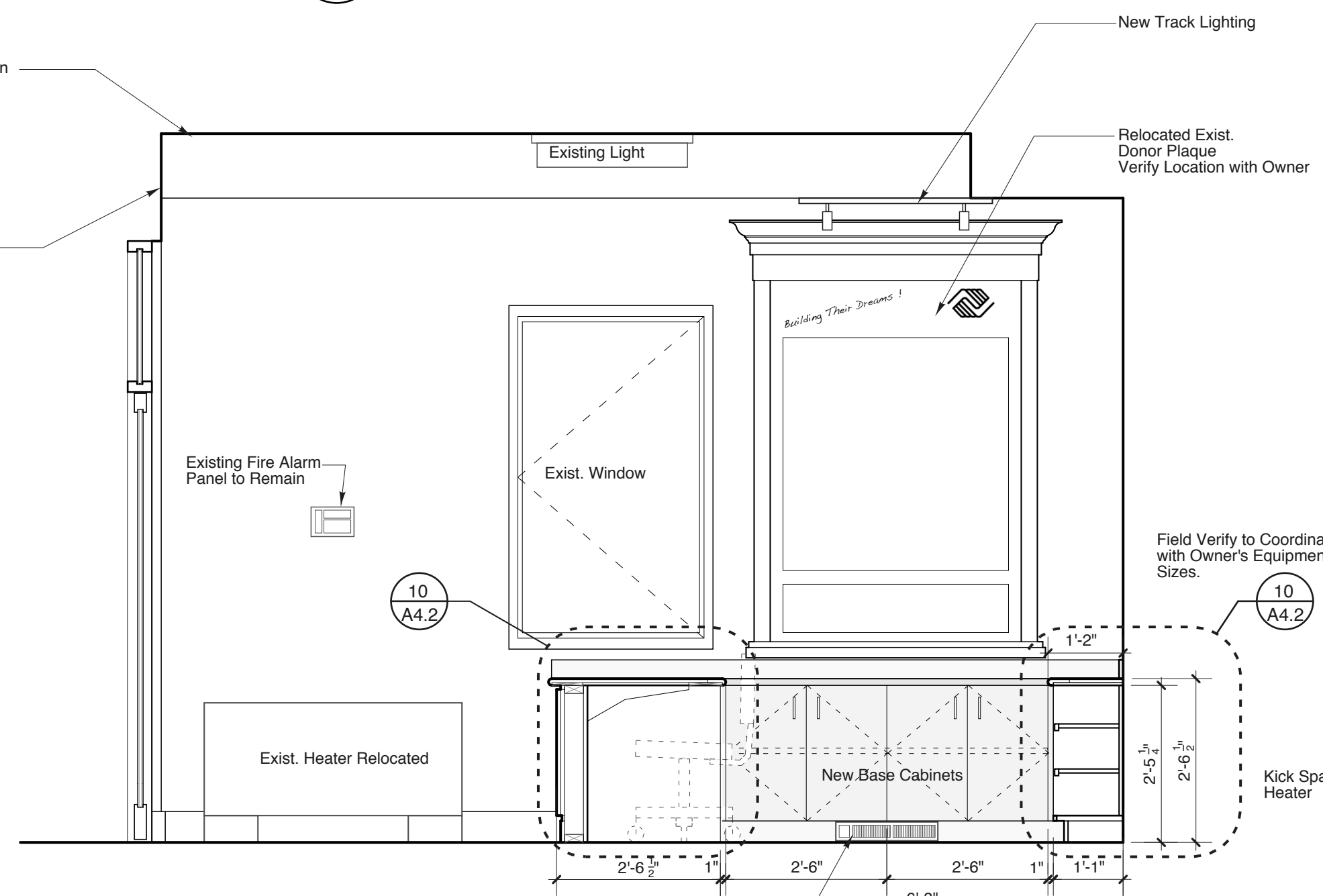
**4 New Coat Room Elevation**  
SCALE: 1/2" = 1'-0" Looking North - South Similar



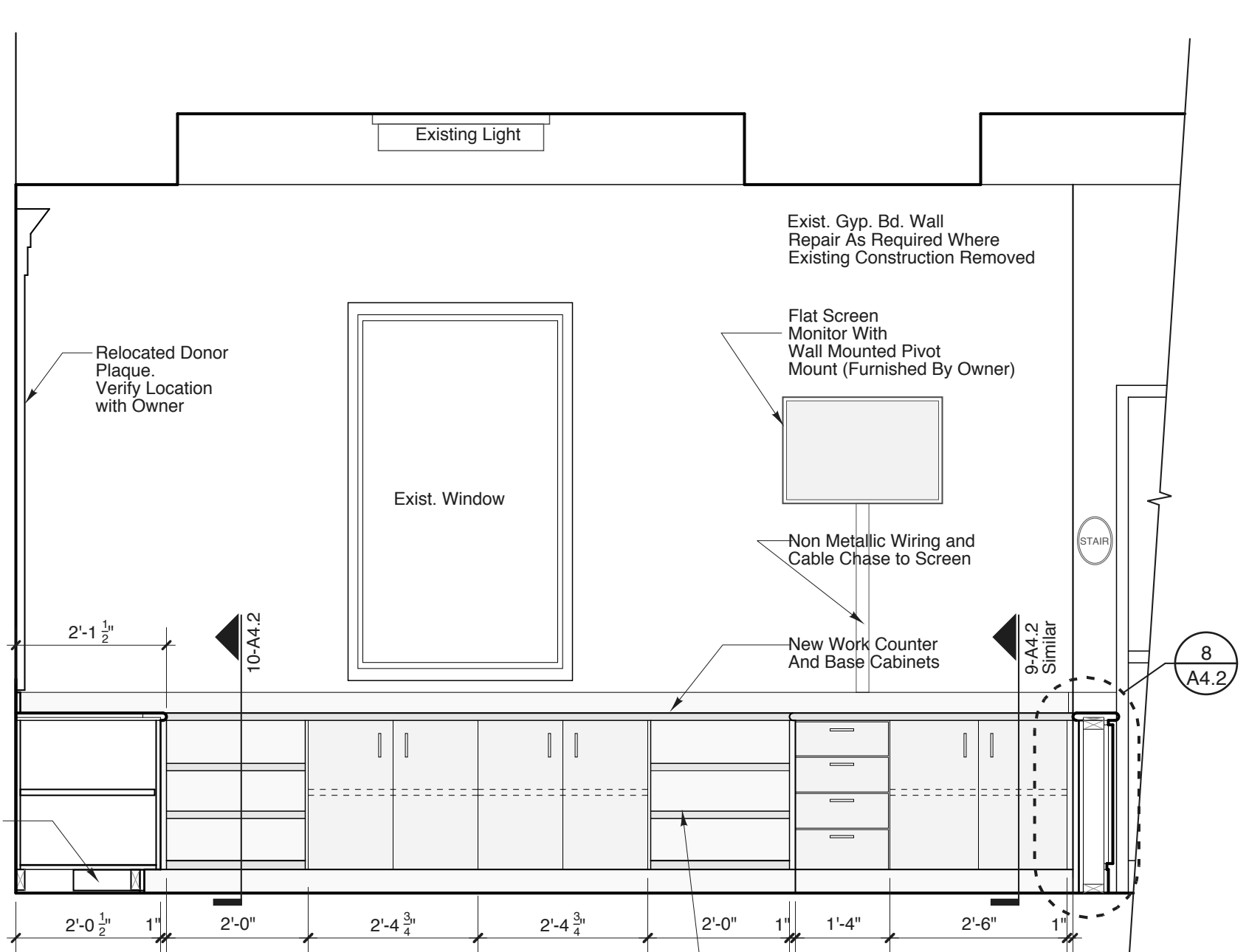
**5 Lobby - Control Desk Elevation**  
SCALE: 1/2" = 1'-0" Looking West



**6 Control Desk Elevation**  
SCALE: 1/2" = 1'-0" Looking East



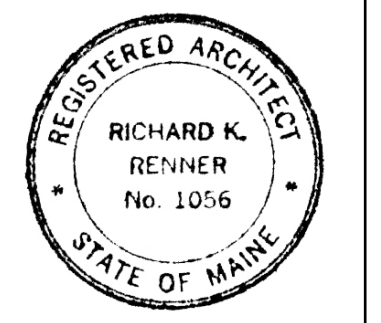
**7 Control Desk Elevation**  
SCALE: 1/2" = 1'-0" Looking South



**8 Control Desk Elevation**  
SCALE: 1/2" = 1'-0" Looking West

**Richard Renner/Architects**  
98 Pleasant Street  
Portland, ME 04101  
207.773.9699  
207.773.9599 fax

133 South Main Street  
Sherborn, MA 01770  
508.651.2385  
508.651.0911 fax



**Issued For Bidding**  
**03-15-2012**

**Boys & Girls Clubs of Southern Maine**  
**Portland Clubhouse Lobby Renovations**  
Portland, Maine

**Interior Elevations**  
Drawn by: RRA  
Scale: 1/2"=1'-0"  
Date: 03/15/12  
File Name: A4.1 Int Elevations  
Project No. 2010-07-00  
Revised:

**Boys & Girls Club - Portland, ME**  
**A4.1**