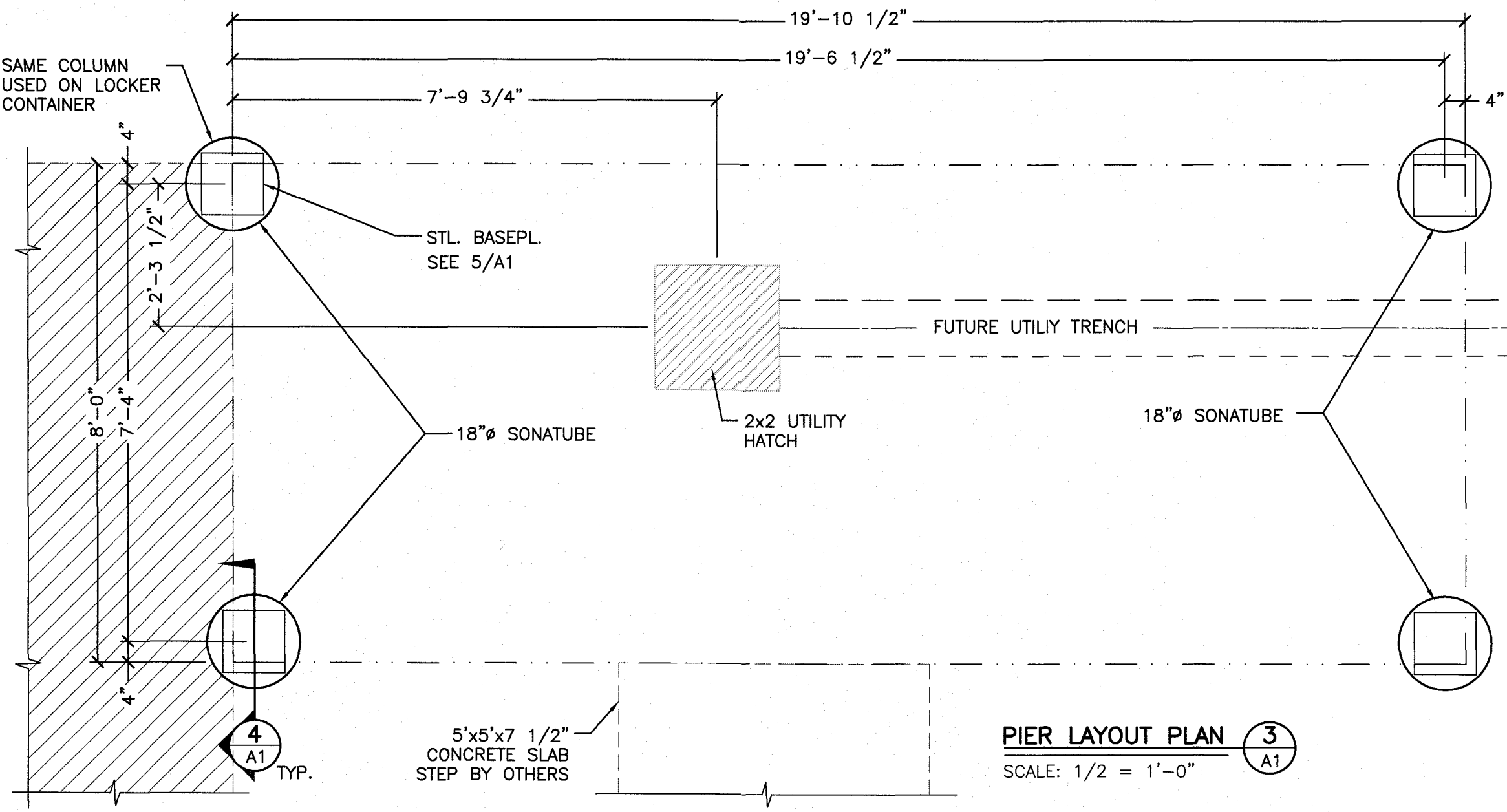
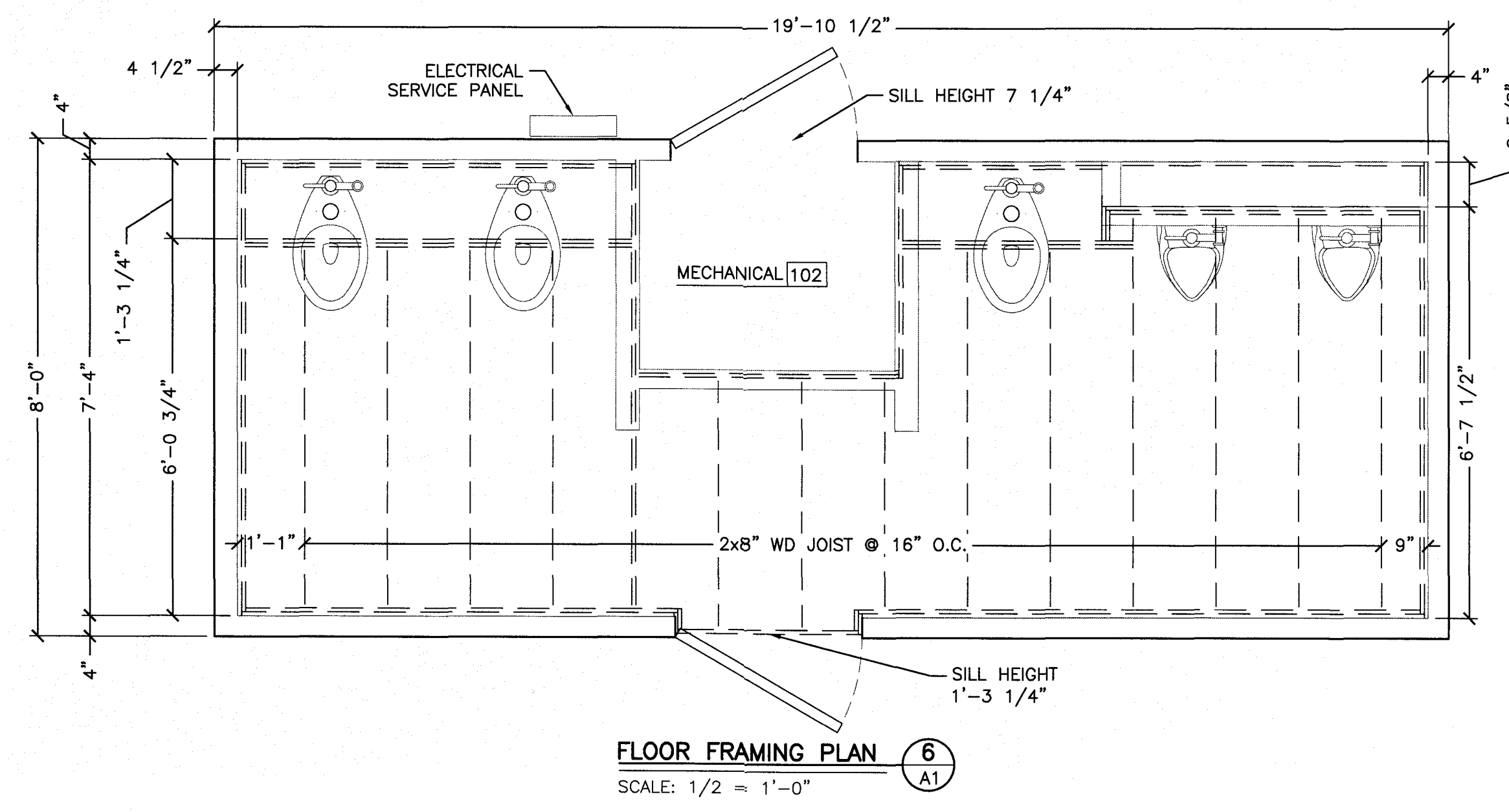


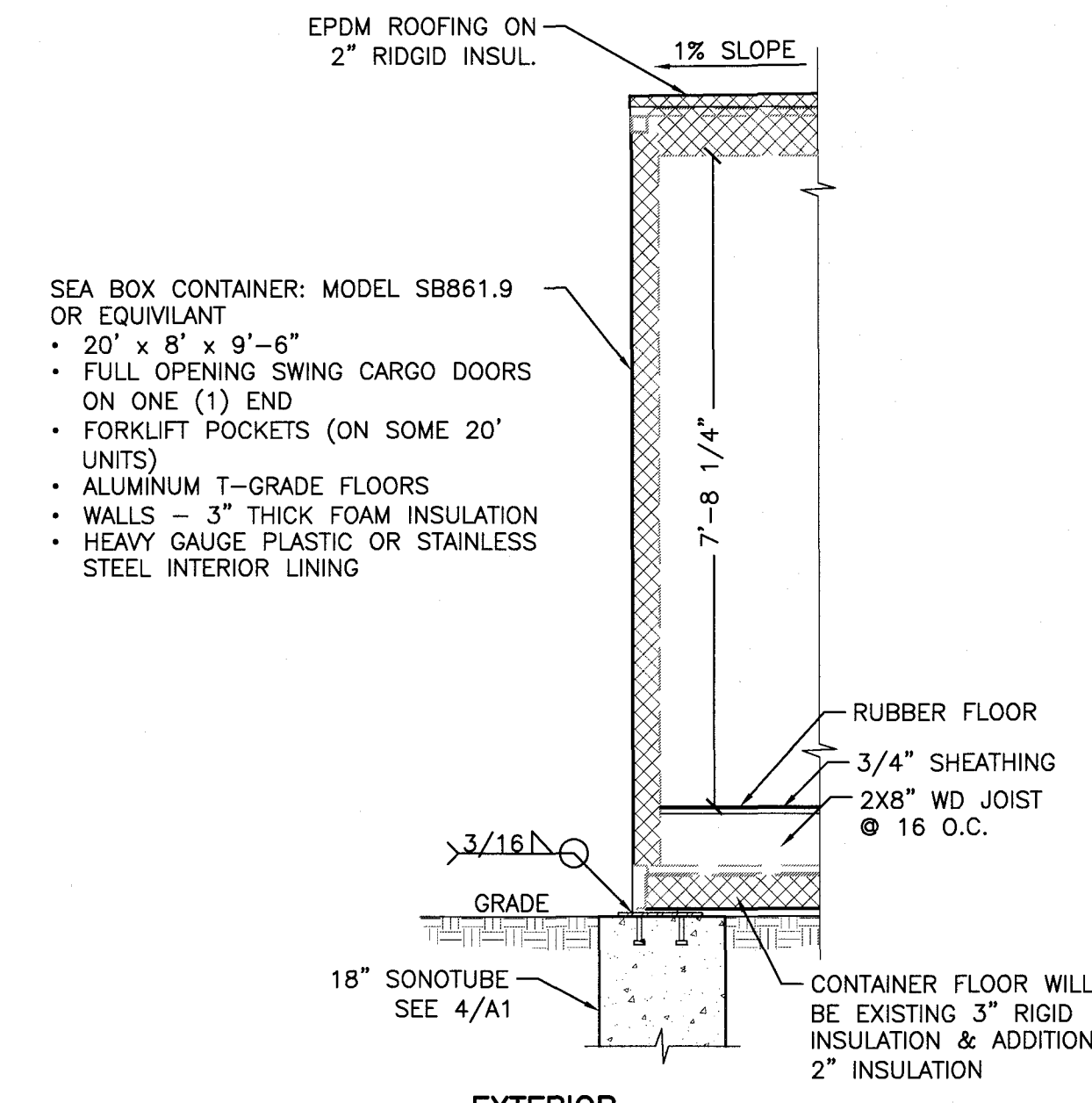
FLOOR PLAN
SCALE: 1/2" = 1'-0"



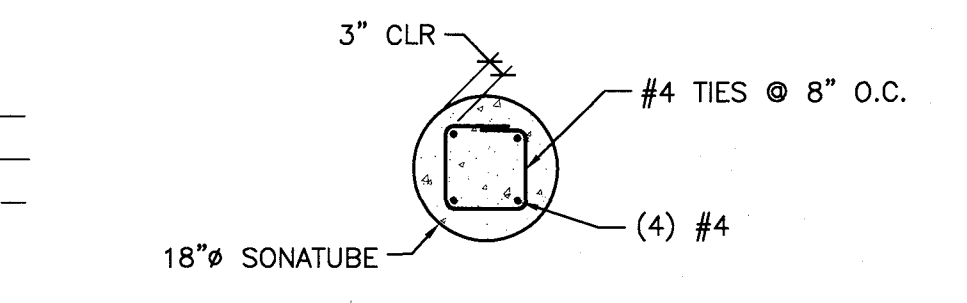
PIER LAYOUT PLAN
SCALE: 1/2" = 1'-0"



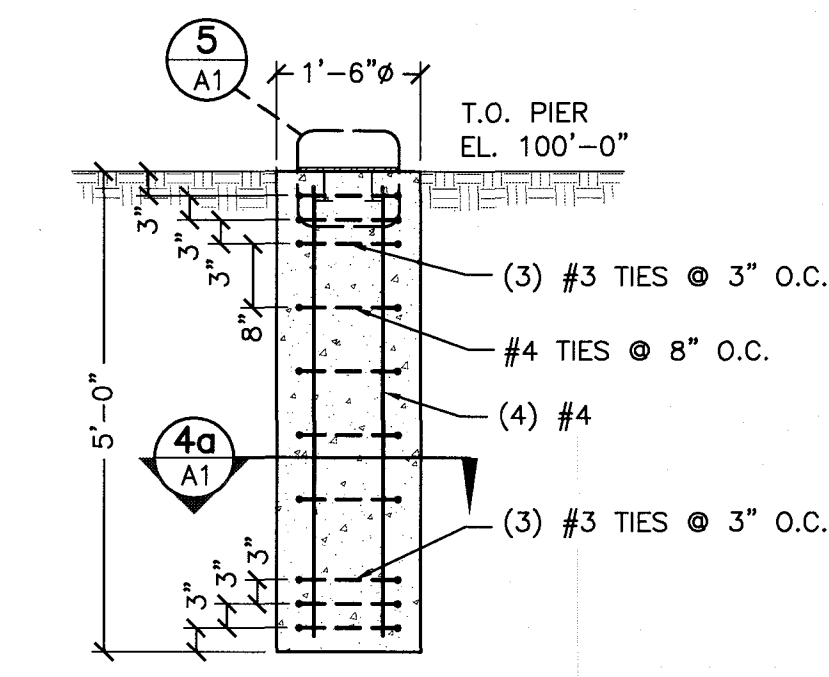
FLOOR FRAMING PLAN
SCALE: 1/2" = 1'-0"



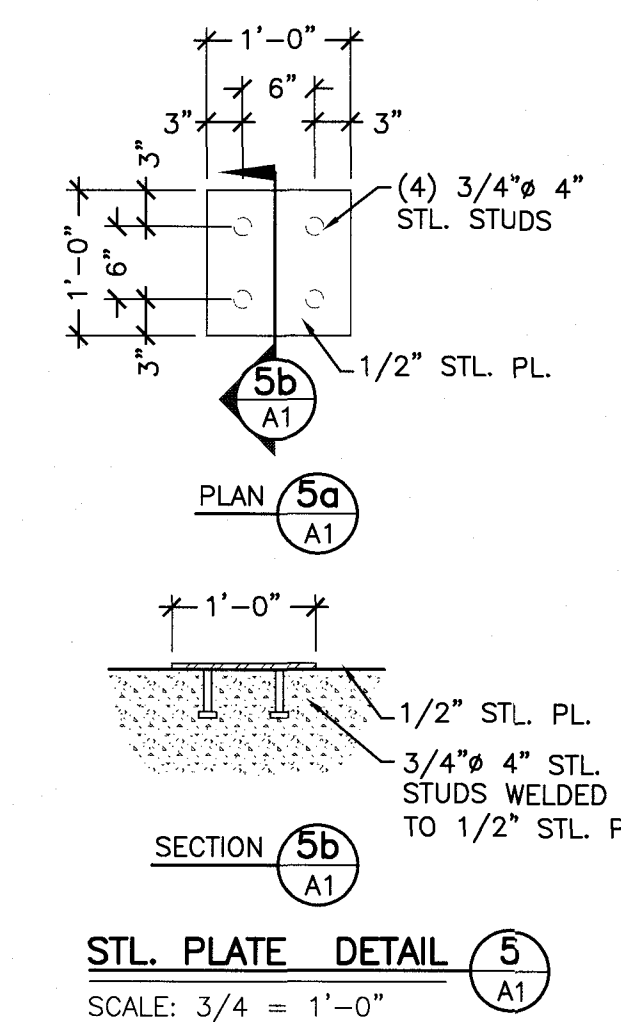
EXTERIOR WALL SECTION
SCALE: 1/2" = 1'-0"



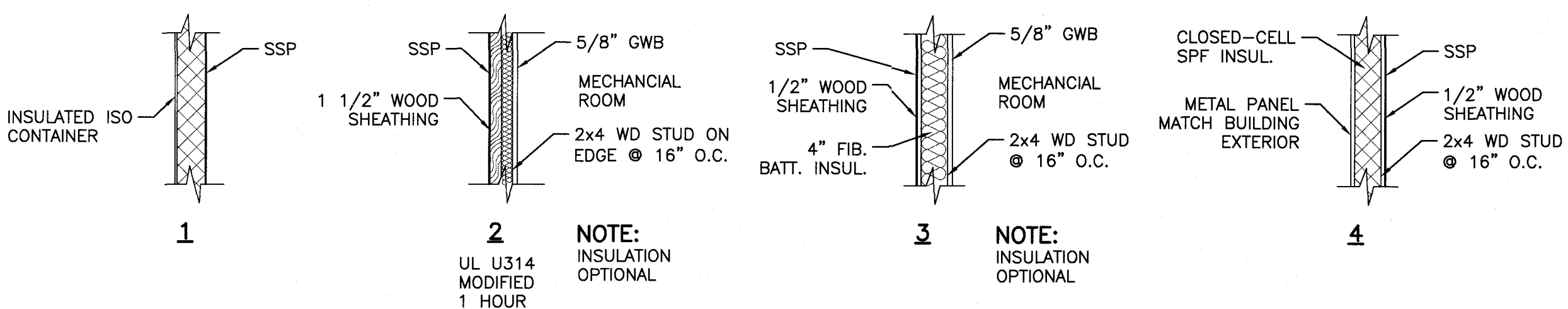
SECTION 4a



SECTION 4
SCALE: 1/2" = 1'-0"



STL. PLATE DETAIL 5
SCALE: 3/4" = 1'-0"



WALL TYPES
NOT TO SCALE

| DOOR SCHEDULE | | | | | | | | | | | |
|---------------|------------------|-------------|--------|-------|----------|------|-------|------------------------------------|----------|-------|-------|
| DOOR NUMBER | LOCATION | DOOR | SIZE | THICK | MATERIAL | TYPE | FRAME | ACCESSORIES | HARDWARE | LABEL | NOTES |
| 100 | FRONT ENTRANCE | 3'-0"x6'-8" | 1-3/4" | MTL | A | MTL | 1 | T - C - H - KP - L3 - DP - WS - DB | | | INSUL |
| 101 | MECHANICAL ROOM | 3'-0"x6'-8" | 1-3/4" | MTL | A | MTL | 1 | T - H - L4 - WS | | | INSUL |
| 102 | LOCKER CONTAINER | 3'-0"x6'-8" | 1-3/4" | MTL | A | MTL | 1 | T - C - H - KP - L3 - DP - WS - DB | | | INSUL |

- ALL HARDWARE TO BE LEVER TYPE U.N.O.
- ALL KEYING TO BE COORDINATED W/ OWNER PRIOR TO ORDERING HARDWARE ITEMS.

DOOR HARDWARE SCHEDULE

- C - CLOSER LCN ADA COMPLIANT
- DS - DOOR STOP: GLYNN-JOHNSON FLOOR MOUNTED TYPE FB 19
- H - HINGES, 1 1/2" PAIR, 4 1/2"x4 1/2", S.S. BALL BEARING NON-REMOVABLE PINS ON EXTERIOR, FULL MORTISE
- KP - KICK PLATE: HAGAR, 14" HIGH, SS FINISH
- T - ALUMINUM THRESHOLD, 6" W x 1/2" H, LENGTH TO FIT DOOR OPENING
- L1 - LOCKSET: STORAGE FUNCTION, CYLINDER LOCK WITH LEVER HANDLE
- L2 - LOCKSET: PRIVACY FUNCTION, CYLINDER LOCK WITH LEVER HANDLE
- L3 - LOCKSET: PASSAGE FUNCTION, CYLINDER LOCK WITH LEVER HANDLE
- L4 - LOCKSET: CLASSROOM FUNCTION, CYLINDER LOCK WITH LEVER HANDLE
- DB - DEADBOLT
- DP - DOOR PULL
- FB - FLUSH BOLT
- PP - PUSH PULL
- WS - WEATHER STRIP: ZERO TYPE 312 AT JAMBS & HEAD

| FINISH SCHEDULE | | | | | | | | | | |
|-----------------|------------|-------|------|-------|-----|-----|-----|---------|-------|---------|
| ROOM # | LOCATION | FLOOR | BASE | WALLS | | | | CEILING | | REMARKS |
| | | | | N | E | S | W | MAT. | HT. | |
| 100 | WOMENS | RBR | - | SSP | SSP | SSP | SSP | SSP | 7'-6" | |
| 101 | MENS | RBR | - | SSP | SSP | SSP | SSP | SSP | 7'-6" | |
| 102 | MECHANICAL | VCT | - | SSP | SSP | SSP | SSP | SSP | 7'-6" | |

FINISH SCHEDULE ABBREV.

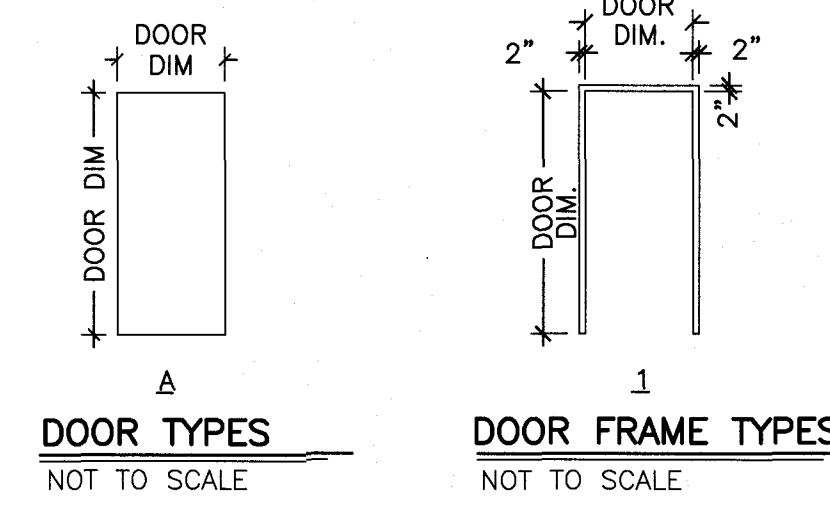
- ACT - ACOUSTIC CEILING
- CONC. - EXPOSED SEALED CONCRETE
- EXP - EXPOSED
- GWB - GYMSUM BOARD
- MP - METAL LINER PANEL
- PCT - COMP. WOOD FLOORING
- RC - RESILIENT COVE
- RBR - RUBBER FLOOR
- SSP - STAINLESS-STEEL PANEL
- VCT - VINYL COMPOSITION TILE
- WC - WOOD COVE BASEBOARD

FINISH NOTES

- ALL GWB TO BE PAINTED 1 COAT PRIMER & 2 COATS FINISH.
- FINISH OF CLOSETS SHOULD MATCH FINISH OF ROOM THE CLOSET IS INSTALLED IN UNLESS SPECIFICALLY NOTED IN THE TABLE OTHERWISE.

FLOORING NOTE

ALL INTERIOR FLOOR FINISHES OTHER THAN CARPETING SHALL MEET FLAME RETARDANT REQUIREMENTS AS SPECIFIED UNDER NFPA 101-10.2, CLASS II RATING.



| WINDOW SCHEDULE | | | | | | | |
|-----------------|----------|---------------------|----------------------|--------------|--------------|--------|---|
| TYPE | LOCATION | ROUGH OPENING WIDTH | ROUGH OPENING HEIGHT | MANUFACTURER | UNIT # | TYPE | NOTE |
| A | REST RM | 2'-8" | 1'-6" | TAFCO | SERIES 30001 | HOPPER | VINYL, INSULATED GLASS, INSTALLATION FLANGE, U-FACTOR .51 |

GENERAL NOTES

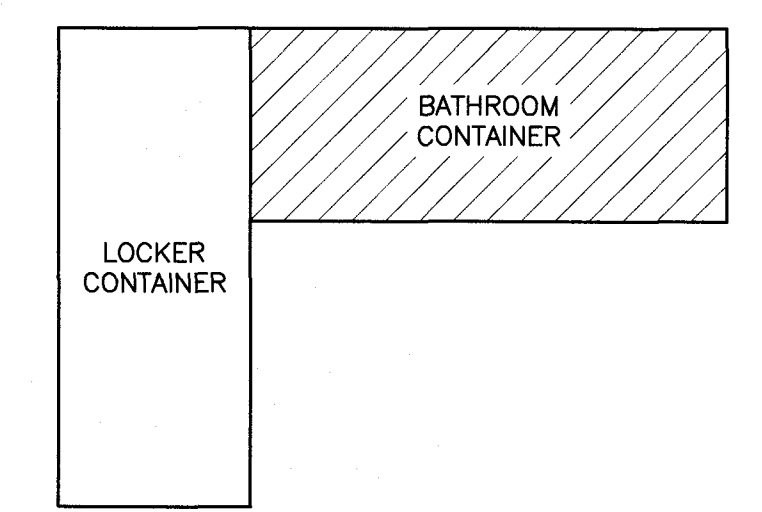
- CONTRACTOR TO VERIFY ALL DIMENSIONS AND CONDITIONS; REPORT ANY DISCREPANCIES TO ENGINEER BEFORE PROCEEDING WITH WORK.
- CONSTRUCTION SHALL FOLLOW INTERNATIONAL BUILDING CODE (2009 EDITION).
- STRUCTURAL SYSTEMS AND COMPONENTS DESIGN SHALL FOLLOW 2009 INTERNATIONAL BUILDING CODE.
- COORDINATE WITH OWNER FOR SIZE AND LOCATION OF OPENINGS IN STRUCTURE NOT SHOWN ON STRUCTURAL DRAWINGS.
- MANUFACTURER IS RESPONSIBLE FOR ADEQUATE BRACING OF STRUCTURAL MEMBERS, WALLS AND NON STRUCTURAL ITEMS DURING CONSTRUCTION AND TRANSPORTATION.
- ALL STRUCTURAL COMPONENTS AND SYSTEMS SHALL BE DESIGNED FOR SELF WEIGHT, SUPERIMPOSED DEAD LOADS, CONCENTRATED LOADS SHOWN ON PLANS, AND THE LIVE LOADS.
- ALL REFERENCED STANDARDS REFER TO LATEST EDITION.
- GENERAL CONTRACTOR TO COORDINATE ALL FLOOR PENETRATIONS WITH APPROPRIATE TRADES.
- DESIGN OF ELECTRICAL WILL BE DONE BY OTHERS FOLLOWING PAN 70 AND STATE OF MAINE REQUIREMENTS.
- ALL WELDING SHALL BE IN ACCORDANCE W/ THE LATEST EDITION OF THE STRUCTURAL WELDING CODE.
- DESIGN FOR BATHROOM AND LOCKER CONTAINER DOES NOT MEET 2010 ADA STANDARDS REQUIREMENTS AT OWNERS REQUEST.

DESIGN LOADS

- ROOF**
DEAD LOAD: PER COMPONENTS USED: 8.5 PSF
COLLATERAL LOAD (MECH/ELEC): 2 PSF
- SNOW LOAD:** (BASED ON ASCE 7-05)
GROUND SNOW LOAD (Pg): 60 PSF
EXPOSURE FACTOR (Ce): 1.0
SNOW LOAD IMPORTANCE FACTOR (I): 1.0
ROOF THERMAL FACTOR - (Ct): 1.0
- SEISMIC DATA:** (BASED ON ASCE 7-05)
SEISMIC LOADS WERE CHECKED AND DO NOT CONTROL.
- WIND LOAD:** (BASED ON ASCE 7-05)
BASIC WIND SPEED: 100 MPH
IMPORTANCE FACTOR (I): 1.0
EXPOSURE: B

LEGEND

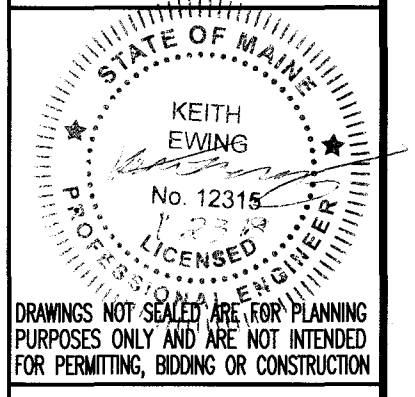
- XXX DOOR NUMBER
- X WALL TYPES SEE WALL TYPE DETAILS
- XXX ROOM NUMBER
- X WINDOW TYPE



KEY PLAN

Jun 23, 2016 - 8:05am
 J:\2017\17289 - Portland homeless bath - portland - snapracol Drawings\BUILDING\17289A.dwg

PROJECT NAME: OXFORD ST. SHELTER BATHROOM & LOCKER CONTAINER
 PORTLAND, MAINE
 SHEET NAME: FIRST FLOOR PLAN
 SHEET NO. 1 OF 3
 DESIGNED: KGE
 DRAWN: DPW
 CHECKED: KGE
 APPROVED: KGE
 PLAN DATE: NOV. 21, 2017
 DATE ISSUED: NOV. 21, 2017
 CLIENT & OWNER: SNAPRSPACE SOLUTIONS
 55 BAKER BLVD
 BOSTON, MAINE 04412
 www.snapspaceengineering.com



DRAWINGS NOT TO BE USED FOR ANY PLANNING PURPOSES ONLY AND ARE NOT INTENDED FOR PERMITTING, BIDDING OR CONSTRUCTION
 SHEET 1 OF 3