

# ELECTRICAL PERMIT

## City of Portland, Me.



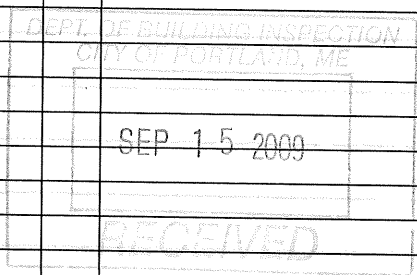
To the Chief Electrical Inspector, Portland Maine:  
 The undersigned hereby applies for a permit to make electrical installations  
 in accordance with the laws of Maine, the City of Portland Electrical Ordinance,  
 National Electrical Code and the following specifications:

Date 9/12/09  
 Permit # 2009 4537  
 CBL# 0263008

LOCATION: 66-68 Chestnut St. Bayside Trail METER MAKE & # \_\_\_\_\_  
 CMP ACCOUNT # 441-1830643-001 OWNER City of Portland  
 TENANT \_\_\_\_\_ PHONE # \_\_\_\_\_

**TOTAL EACH FEE**

OUTLETS	Receptacles	Switches	Smoke Detector		
				.20	
FIXTURES	Incandescent	Fluorescent	Strips	.20	
SERVICES	Overhead	Underground	TTL AMPS <800	15.00	N/C
	Overhead	Underground	>800	25.00	
Temporary Service	Overhead	Underground	TTL AMPS	25.00	
METERS	(number of)			1.00	
MOTORS	(number of)			2.00	
RESID/COM	Electric units			1.00	
HEATING	oil/gas units	Interior	Exterior	5.00	
APPLIANCES	Ranges	Cook Tops	Wall Ovens	2.00	
	Insta-Hot	Water heaters	Fans	2.00	
	Dryers	Disposals	Dishwasher	2.00	
	Compactors	Spa	Washing Machine	2.00	
	Others (denote)	<u>LED FIXTURES &amp; Poles</u>		2.00	N/C
MISC. (number of)	31	Air Cond/win		3.00	
		Air Cond/cent	Pools	10.00	
		HVAC	EMS	5.00	
		Signs		10.00	
		Alarms/res		5.00	
		Alarms/com		15.00	
		Heavy Duty(CRKT)		2.00	
		Circus/Carnv		25.00	
		Alterations		5.00	
		Fire Repairs		15.00	
		E Lights		1.00	
		E Generators		20.00	
PANELS	Service	Remote	Main	4.00	
TRANSFORMER	0-25 Kva			5.00	
	25-200 Kva			8.00	
	Over 200 Kva			10.00	
			TOTAL AMOUNT DUE		
			MINIMUM FEE/COMMERCIAL 55.00	MINIMUM FEE 45.00	



0263008

CONTRACTORS NAME Enterprise Electric, Inc. MASTER LIC. # MC60017745  
 ADDRESS 46 Capitol Ave, Lisbon Falls, ME 04252 LIMITED LIC. # \_\_\_\_\_  
 TELEPHONE 353-2697

SIGNATURE OF CONTRACTOR [Signature]  
 White Copy - Office Yellow Copy - Applicant

# ELECTRICAL PERMIT

## City of Portland, Me.




I, the undersigned hereby applies for a permit to make electrical installations in accordance with the laws of Maine, the City of Portland Electrical Ordinance, the National Electrical Code and the following specifications:

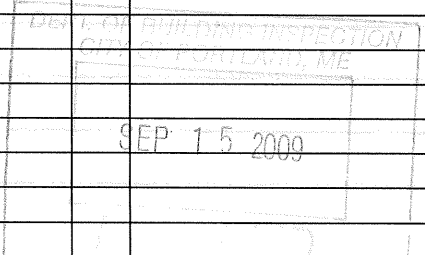
Date 9/15/09  
 Permit # 2009 4536  
 CBL# 608 A006

LOCATION: 11 Plowman St. Bayside Trail METER MAKE & # \_\_\_\_\_  
 CMP ACCOUNT # 441-1830658-001 OWNER City of Portland  
 TENANT \_\_\_\_\_ PHONE # \_\_\_\_\_

						TOTAL EACH FEE	
OUTLETS		Receptacles		Switches		Smoke Detector	.20
FIXTURES		Incandescent		Fluorescent		Strips	.20
SERVICES		Overhead		Underground	1	TTL AMPS <800	15.00
		Overhead		Underground		>800	25.00
Temporary Service		Overhead		Underground		TTL AMPS	25.00
							25.00
METERS		(number of)					1.00
MOTORS		(number of)					2.00
RESID/COM		Electric units					1.00
HEATING		oil/gas units		Interior		Exterior	5.00
APPLIANCES		Ranges		Cook Tops		Wall Ovens	2.00
		Insta-Hot		Water heaters		Fans	2.00
		Dryers		Disposals		Dishwasher	2.00
		Compactors		Spa		Washing Machine	2.00
MISC. (number of)	31	Others (denote)		<u>LED FIXTURES &amp; Poles</u>			2.00
		Air Cond/win					3.00
		Air Cond/cent				Pools	10.00
		HVAC		EMS		Thermostat	5.00
		Signs					10.00
		Alarms/res					5.00
		Alarms/com					15.00
		Heavy Duty(CRKT)					2.00
		Circus/Carnv					25.00
		Alterations					5.00
		Fire Repairs					15.00
		E Lights					1.00
		E Generators					20.00
PANELS		Service		Remote		Main	4.00
TRANSFORMER		0-25 Kva					5.00
		25-200 Kva					8.00
		Over 200 Kva					10.00
						TOTAL AMOUNT DUE	
MINIMUM FEE/COMMERCIAL 55.00						MINIMUM FEE	45.00

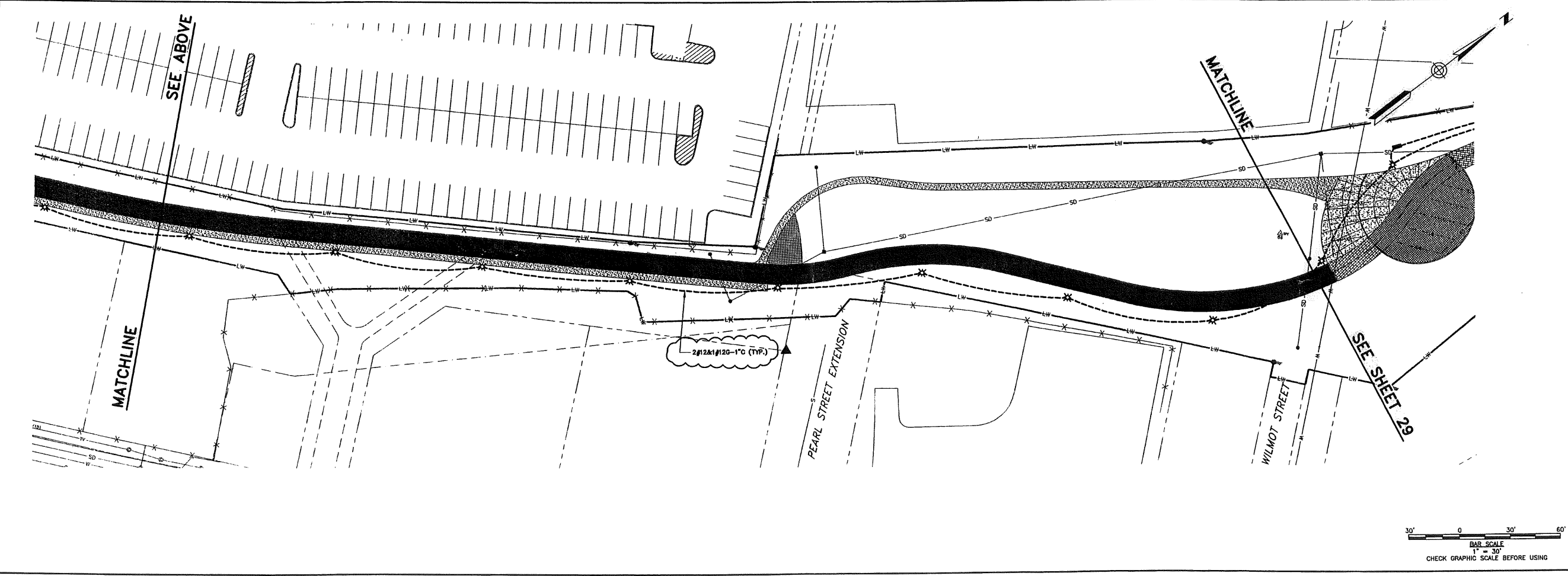
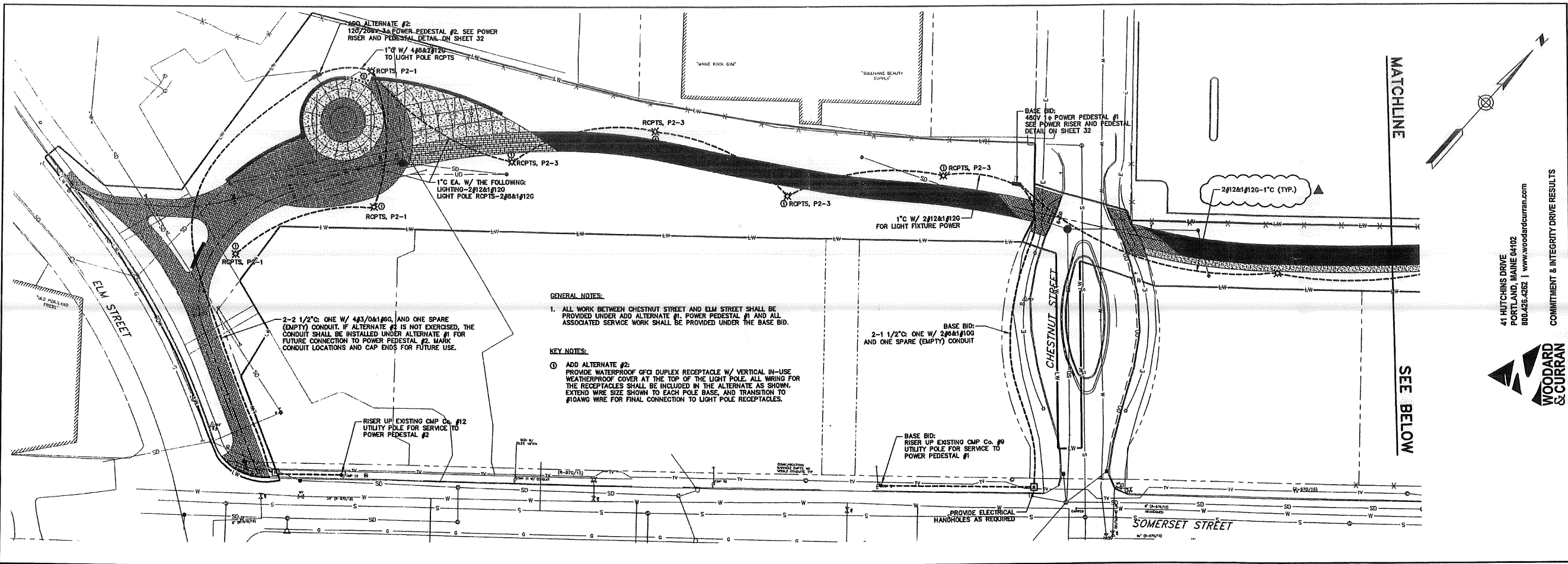
CONTRACTORS NAME Enterprise Electric, Inc. MASTER LIC. # MC60017745  
 ADDRESS 46 Capital Ave, Lisbon Falls, ME 04252 LIMITED LIC. # \_\_\_\_\_  
 TELEPHONE 353.2697

SIGNATURE OF CONTRACTOR   
 White Copy Office      Yellow Copy - Applicant



00  
7  
00  
700

# Electrical Drawings



LDD PROJECT NAME:		DRAWING NAME:	
2039-365-E00A.DWG		2039-365-E00A.DWG	
DATE:		FIELD BOOK USED:	
6/12/2009			
DESCRIPTION:		REV:	
ADDENDUM 1		1	
DATE:		DATE:	
6/12/2009		6/12/2009	

DESIGNED BY: [Signature]

DRAWN BY: [Signature]

CHECKED BY: [Signature]

SCALE: AS NOTED

DATE: 05/22/2009

WOODWARD & CURRAN  
COMMITMENT & INTEGRITY DRIVE RESULTS

41 HUTCHINS DRIVE  
PORTLAND, MAINE 04102  
800.426.4262 | www.woodwardcurran.com

REFERENCES:  
STIP\_L63001.dwg

CITY OF PORTLAND, MAINE  
PUBLIC SERVICES DEPARTMENT  
ENGINEERING SECTION

BAYSIDE TRAIL  
ELECTRICAL - 1

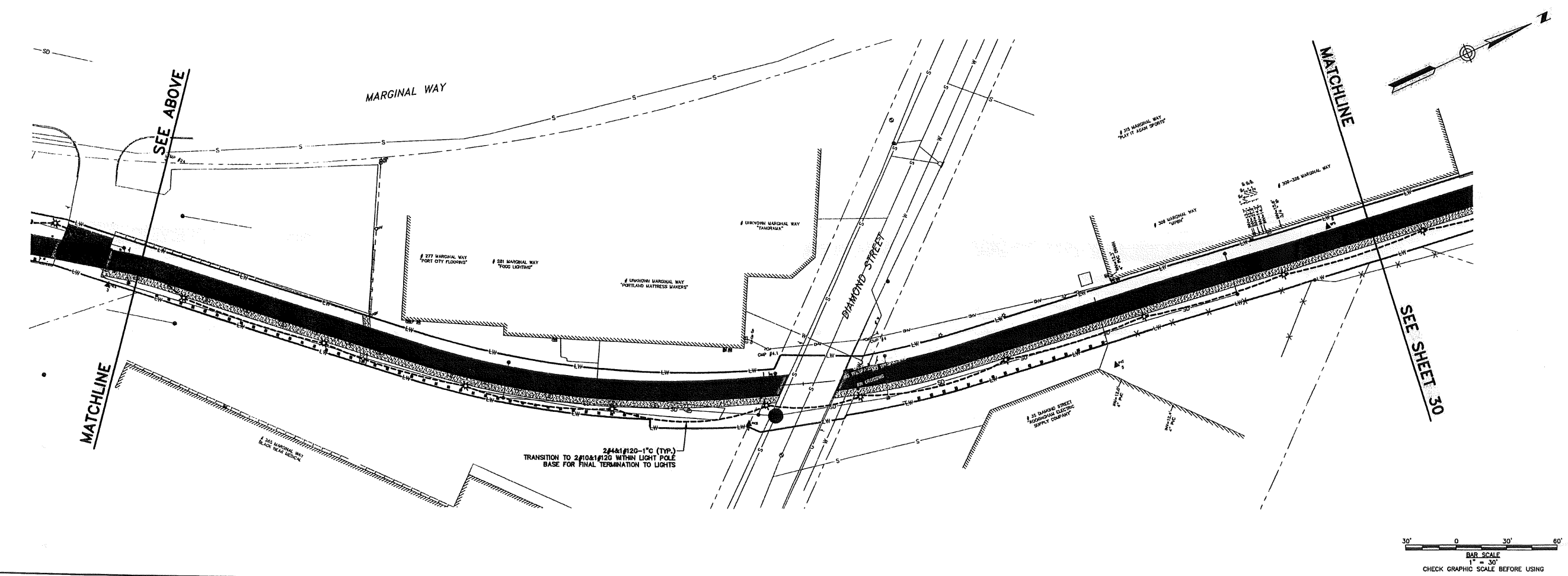
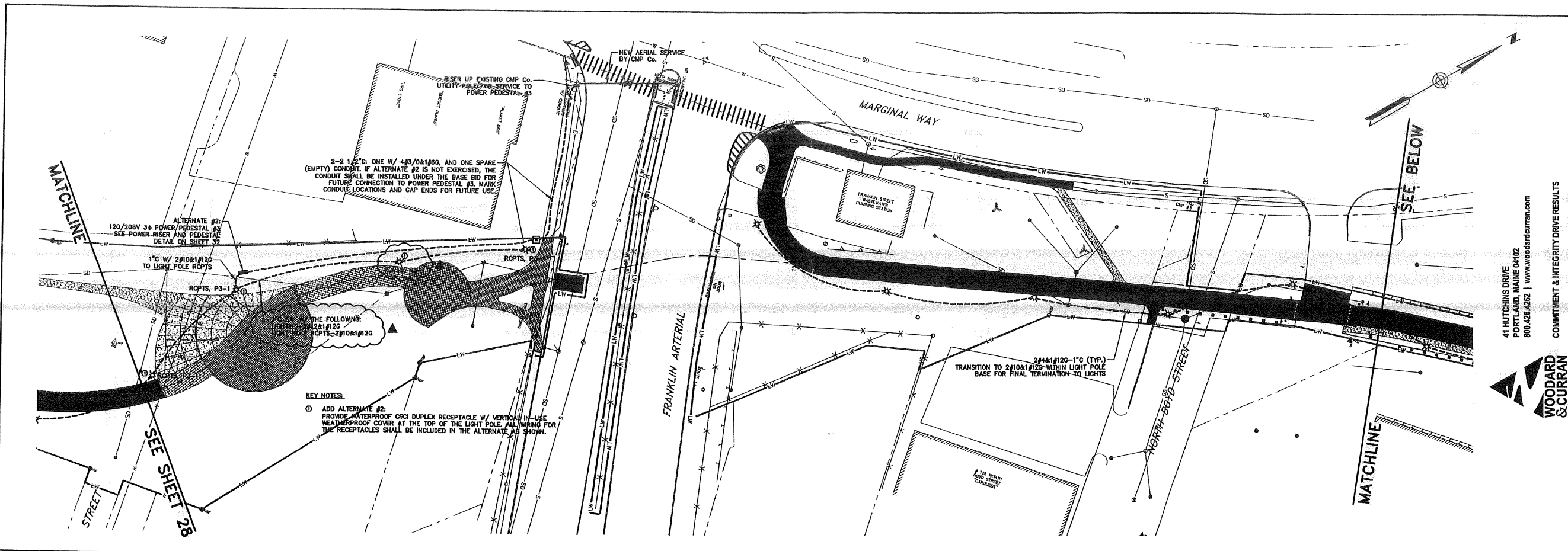
SHEET #  
28 OF 33

PLAN NUMBER

STATE OF MAINE  
REGISTERED PROFESSIONAL ENGINEER  
No. 10000  
JAMES M. WOODWARD  
EXPIRES 12/31/2010

C:\2039-365-City of Portland-General Engineering Services\wp\_65\_Baywalk\_Traffic\DRAWINGS\2039-365-E00A.dwg, Jun 12, 2009 - 2:46pm

0:\203843 City of Portland-General Engineering Services\105 Bayside Trail\DRAWINGS\203843-65-E00A.dwg, Jun 12, 2009 - 2:46pm



41 HUTCHINS DRIVE  
 PORTLAND, MAINE 04102  
 800.426.4252 | www.woodardcurran.com



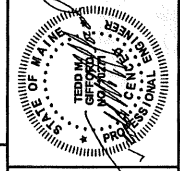
COMMITMENT & INTEGRITY DRIVE RESULTS

LDD PROJECT NAME:  
 DRAWING NAME: 203843-65-E00A.DWG  
 FIELD BOOK USED:

REV	DESCRIPTION	DATE
1	ADDITIONAL 1	8/12/2009

REFERENCES:  
 STMP\_050001.dwg

DESIGNED BY:	DRAWN BY:	CHECKED BY:	SCALE:	AS NOTED:	DATE:
KRM	KRM	TAC	TAC	AS NOTED	05/22/2009

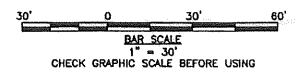


BAYSIDE TRAIL  
 ELECTRICAL - 2

CITY OF PORTLAND, MAINE  
 PUBLIC SERVICES DEPARTMENT  
 ENGINEERING SECTION



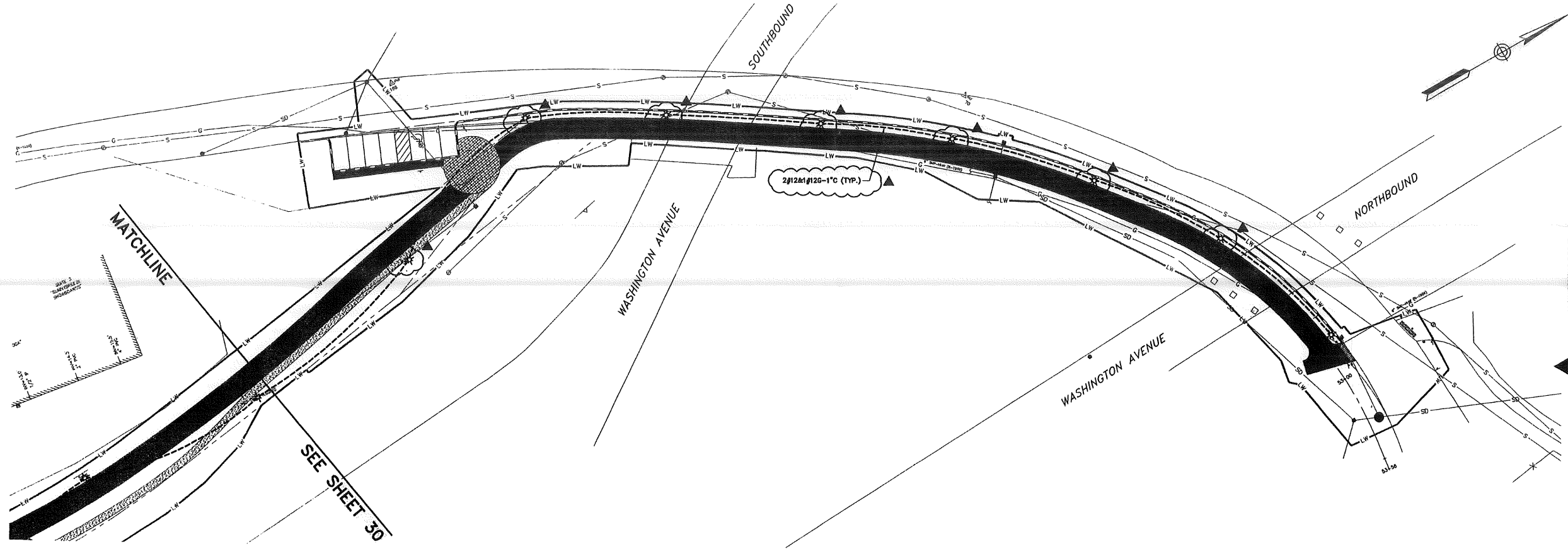
SHEET #  
 29 OF 33  
 PLAN NUMBER







C:\203943 City of Portland-General Engineering Services\p185 Bayside Trail\DRAWINGS\20394365-EDDA.dwg, Jun 12, 2009 - 2:49pm



41 HUTCHINS DRIVE  
 PORTLAND, MAINE 04102  
 800.426.4262 | www.woodardcurran.com



COMMITMENT & INTEGRITY DRIVE RESULTS

DESIGNED BY:	COM
DRAWN BY:	COM
CHECKED BY:	TMC
SCALE:	AS NOTED
DATE:	05/22/2009

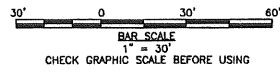


BAYSIDE TRAIL  
 ELECTRICAL - 4

CITY OF PORTLAND, MAINE  
 PUBLIC SERVICES DEPARTMENT  
 ENGINEERING SECTION

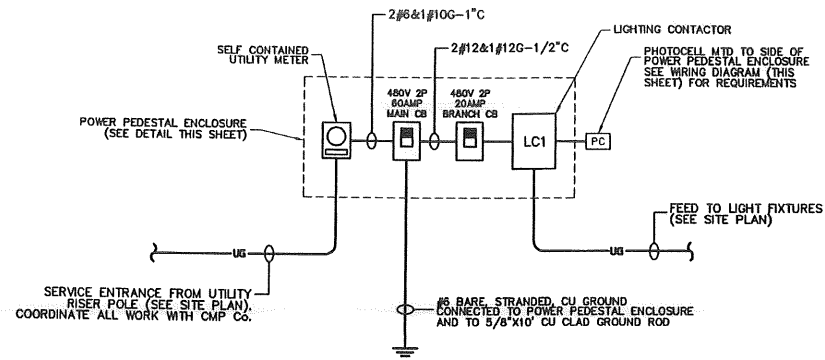


SHEET #  
 31 OF 33  
 PLAN NUMBER

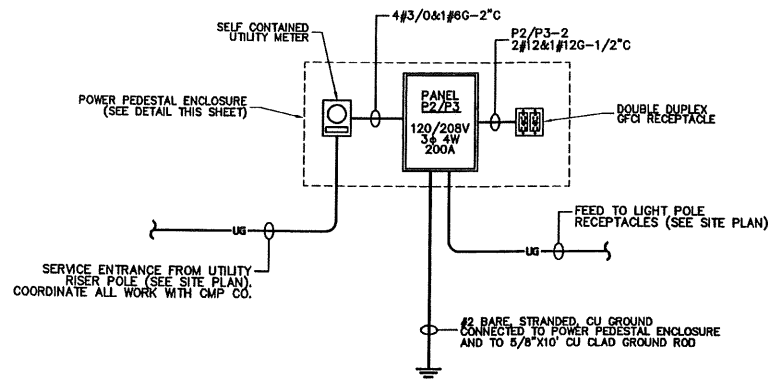


LDD PROJECT NAME:  
 DRAWING NAME:  
 20394365-EDDA.DWG  
 FIELD BOOK USED:

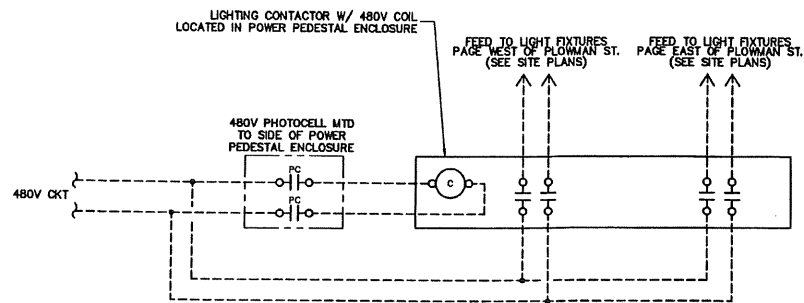
REV	DATE	DESCRIPTION
1 <td>6/12/2009 <td>ADDEDUM 1</td> </td>	6/12/2009 <td>ADDEDUM 1</td>	ADDEDUM 1



**POWER PEDESTAL #1 AND #4  
POWER RISER DIAGRAM**  
SCALE: NO SCALE

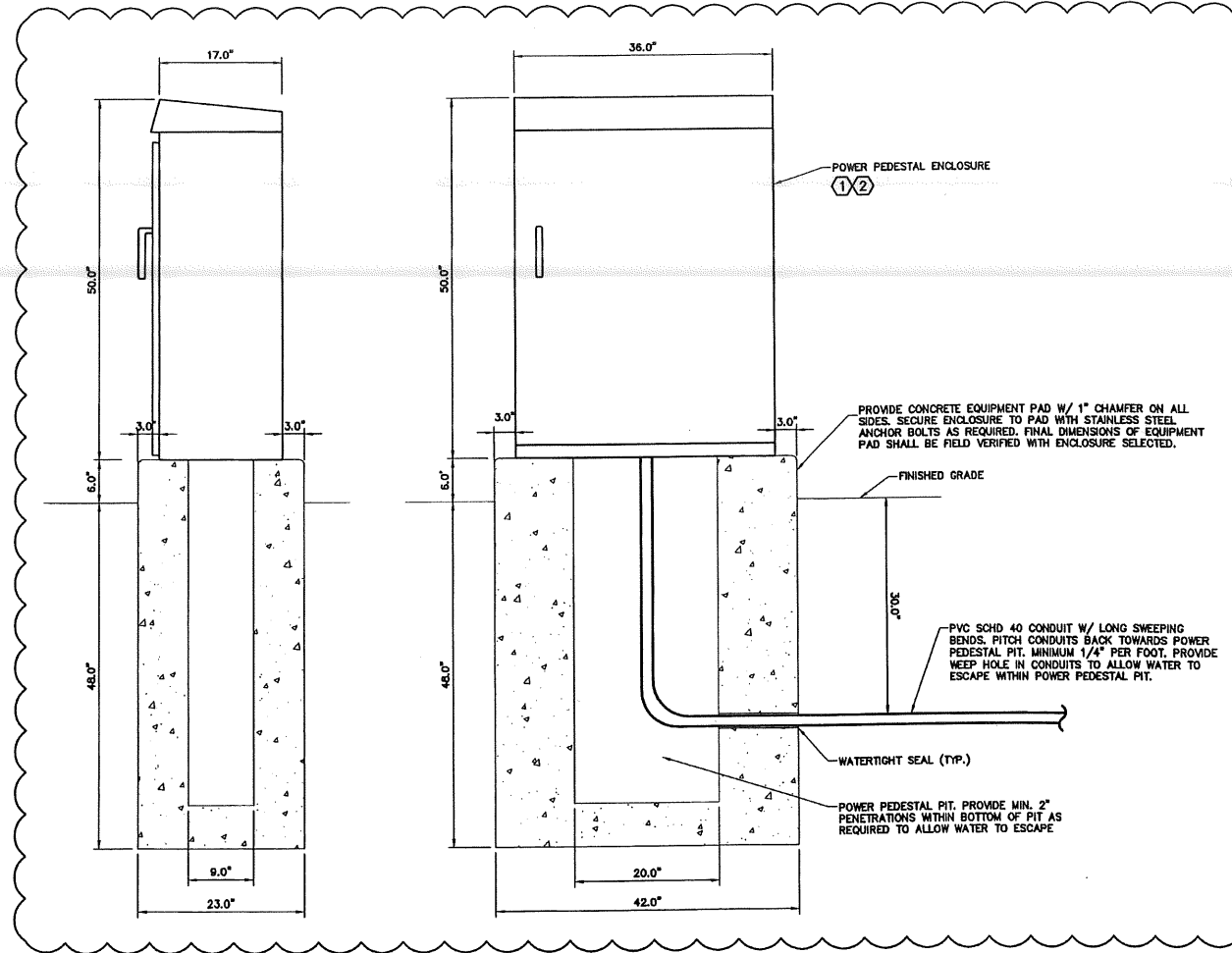


**POWER PEDESTAL #2 & #3  
POWER RISER DIAGRAM**  
SCALE: NO SCALE

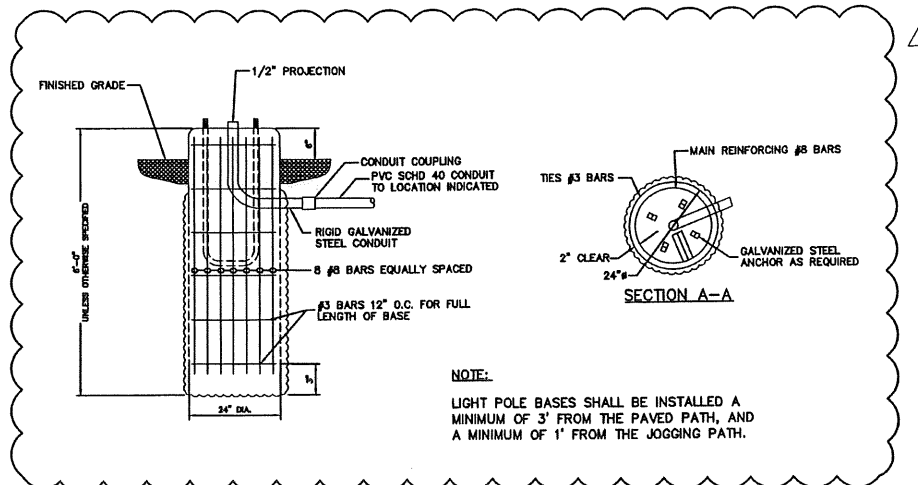


**TYPICAL PHOTOCELL AND LIGHTING CONTACTOR  
WIRING DIAGRAM**  
SCALE: NO SCALE

- NOTES:**
1. PROVIDE LOCKABLE NEMA 3R ALUMINUM ENCLOSURE WITH INTEGRAL BACKPANEL EQUAL TO APX MODEL #APX503617, OR APPROVED EQUAL.
  2. ALL WIRING & CABLES TO BE INSTALLED WITHIN THE EQUIPMENT ENCLOSURE SHALL BE TAGGED APPROPRIATELY TO DESIGNATE INTENDED USE AND CONNECTED LOAD. ALL CABLES SHALL BE BUNDELED NEATLY, TIE WRAPPED, DRESSED APPROPRIATELY AND SHALL RUN PARALLEL AND PERPENDICULAR AT 90 DEGREE ANGLES. CABLES SHALL BE SUPPORTED VIA WIRE BUNDLE STRAPS AND HEAVY DUTY CABLE TIE MOUNTS, WHICH UTILIZE A SCREW MOUNTING METHOD TO SUPPORT TO THE BACK PANEL (ADHESIVE BACK SUPPORTS ARE NOT ACCEPTABLE). WIRE BUNDLE STRAPS SHALL BE SIMILAR TO PANDUIT WBS8 SERIES, AND CABLE TIE MOUNTS SHALL BE SIMILAR TO PANDUIT TMS SERIES (OR APPROVED EQUAL).
  3. DETAIL IS TYPICAL FOR POWER PEDESTALS 1, 2, 3, & 4.



**TYPICAL POWER PEDESTAL ENCLOSURE DETAIL**  
SCALE: NO SCALE



**LIGHT POLE BASE DETAIL**  
SCALE: NO SCALE

44 HUTCHINS DRIVE  
PORTLAND, MAINE 04102  
800.425.4252 | www.woodardcurran.com

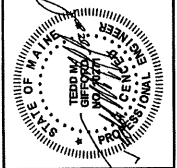


COMMITMENT & INTEGRITY DRIVE RESULTS

LDD PROJECT NAME:	
DRAWING NAME:	202394365-EO06.DWG
FIELD BOOK USED:	
REV	DATE
1	6/12/2009
DESCRIPTION	
1	

REFERENCES:  
STRIP\_#63001.dwg

DESIGNED BY:	NRN	DATE:	06/12/2009
DRAWN BY:	NRN	SCALE:	AS NOTED
CHECKED BY:	TMG	AS NOTED:	



BAYSIDE TRAIL

ELECTRICAL DETAILS - 1

CITY OF PORTLAND, MAINE  
PUBLIC SERVICES DEPARTMENT  
ENGINEERING SECTION



SHEET #  
32 OF 33  
PLAN NUMBER

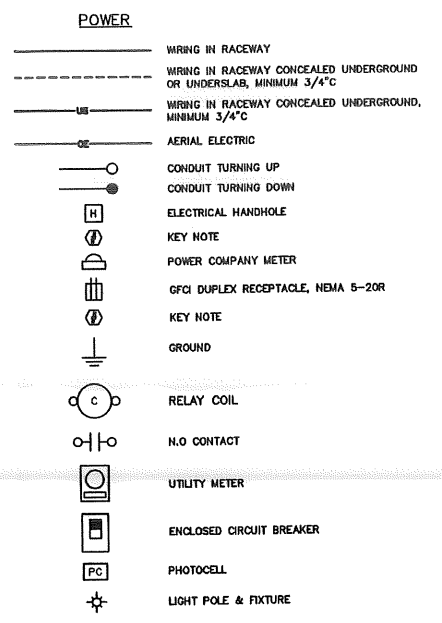
LIGHTING FIXTURE SCHEDULE								
ALL FIXTURES SHALL BE FURNISHED COMPLETE WITH ALL HARDWARE, LAMPS, HANGERS, FITTINGS, ETC., FOR A COMPLETE AND PROPER INSTALLATION.								
TYPE	MANUFACTURER	CATALOG NUMBER	LAMP TYPE	LAMP WATT	LAMP NO.	VOLTAGE	MTG.	REMARKS/RECOMMENDATIONS
☼	KIM LIGHTING	POLE MOUNTED LED FIXTURE W/ TYPE II DISTRIBUTION FIXTURE: 15A-1WPESE2-LSK180-LS5TL POLE: HAPCO 3RA-16B4-4-CUSTOM	LED	88	60	480	4" ROUND ALUMINUM POLE	FIXTURE AND POLE SHALL BE PAINTED GREEN, RAL #6018. MOUNT FIXTURE 16"-0" AFD.

**LIGHT FIXTURE SCHEDULE**  
SCALE: NO SCALE

DIRECTORY	BRKR	POLE	CKT #	KVA	KVA LOADS			KVA	CKT #	POLE	BRKR	DIRECTORY
					A	B	C					
LIGHT POLE RCPTS	20	1	1	0.64	0.90		0.36	2	1	20	INTERIOR POWER PEDESTAL GFCI	
LIGHT POLE RCPTS	20	1	3	0.72		0.72		4	1	20	SPARE	
SPARE	20	1	6			0.00		6	1	20	SPARE	
SPARE	20	1	7		0.00			8	1	20	SPARE	
SPARE	20	1	9		0.00			10	1	20	SPARE	
SPARE	20	1	11		0.00			12	1	20	SPARE	
SPACE			13		0.00			14			SPACE	
SPACE			16		0.00			16			SPACE	
SPACE			17			0.00		18			SPACE	
SPACE			19		0.00			20			SPACE	
SPACE			21		0.00			22			SPACE	
SPACE			23			0.00		24			SPACE	
SPACE			26		0.00			26			SPACE	
SPACE			27		0.00			28			SPACE	
SPACE			29			0.00		30			SPACE	
SUBTOTAL				0.80	0.72	0.00		SUBTOTAL				
VOLTAGE:		120/208		TOTAL KVA		1.62		PANEL NAME:		P2		
MAIN BREAKER:		200		TOTAL AMPS		5		LOCATION:		POWER PEDESTAL #2		
BUSES:		225		MOUNTING:		SURFACE		PH & WIRES:		3P 4W		
PH & WIRES:		3P 4W		AIC RATING:		22 KAIC		NOTES:				

DIRECTORY	BRKR	POLE	CKT #	KVA	KVA LOADS			KVA	CKT #	POLE	BRKR	DIRECTORY
					A	B	C					
LIGHT POLE RCPTS	20	1	1	0.72	1.08		0.36	2	1	20	INTERIOR POWER PEDESTAL GFCI	
SPARE	20	1	3		0.00			4	1	20	SPARE	
SPARE	20	1	6			0.00		6	1	20	SPARE	
SPARE	20	1	7		0.00			8	1	20	SPARE	
SPARE	20	1	9		0.00			10	1	20	SPARE	
SPARE	20	1	11		0.00			12	1	20	SPARE	
SPACE			13		0.00			14			SPACE	
SPACE			16		0.00			16			SPACE	
SPACE			17			0.00		18			SPACE	
SPACE			19		0.00			20			SPACE	
SPACE			21		0.00			22			SPACE	
SPACE			23			0.00		24			SPACE	
SPACE			26		0.00			26			SPACE	
SPACE			27		0.00			28			SPACE	
SPACE			29			0.00		30			SPACE	
SUBTOTAL				1.08	0.00	0.00		SUBTOTAL				
VOLTAGE:		120/208		TOTAL KVA		1.08		PANEL NAME:		P3		
MAIN BREAKER:		200		TOTAL AMPS		3		LOCATION:		POWER PEDESTAL #3		
BUSES:		225		MOUNTING:		SURFACE		PH & WIRES:		3P 4W		
PH & WIRES:		3P 4W		AIC RATING:		22 KAIC		NOTES:				

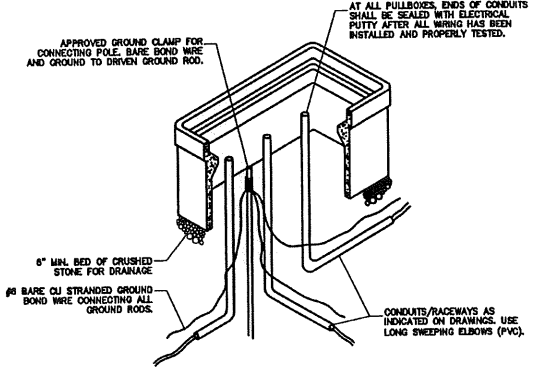
**PANEL SCHEDULES**  
SCALE: NO SCALE



- ABBREVIATIONS**
- AFF ABOVE FINISHED FLOOR
  - AFG ABOVE FINISHED GRADE
  - AHJ AUTHORITY HAVING JURISDICTION
  - AIC AMPERE INTERRUPT CAPACITY
  - CKT CIRCUIT
  - CL CENTERLINE
  - EA EACH
  - E.C. ELECTRICAL CONTRACTOR
  - EXG. EXISTING
  - F.W.E. FURNISHED WITH EQUIPMENT
  - GEN GENERATOR
  - GFCI GROUND FAULT CIRCUIT INTERRUPTER
  - GND GROUND
  - MCB MAIN CIRCUIT BREAKER
  - MTD MOUNTED
  - NEC NATIONAL ELECTRIC CODE
  - RGS RIGID STEEL CONDUIT
  - T-STAT THERMOSTAT
  - TVSS TRANSIENT VOLTAGE SURGE SUPPRESSOR
  - TYP TYPICAL
  - UG UNDERGROUND
  - WP WEATHER PROOF
  - XFMR TRANSFORMER
  - XP EXPLOSION PROOF

**ELECTRICAL LEGEND**  
SCALE: NO SCALE

- PULLBOX NOTES:**
- CONDUITS NOT TERMINATING IN OR AT THE PULLBOXES SHALL NOT RUN THROUGH PULLBOXES, UNLESS REQUIRED FOR PULLING.
  - FINAL DIMENSIONS OF PULL BOXES SHALL BE AS VERIFIED IN THE FIELD AND SHALL BE IN ACCORDANCE WITH NEC.
  - PULLBOX COVERS SHALL BE CAST IRON. PROVIDE EXTENSION AS REQUIRED.
  - PULLBOXES SHALL BE PRECAST, AND SHALL BE RHW H20 RATED.



**ELECTRICAL HANDHOLE DETAIL**  
SCALE: NO SCALE

44 HUTCHINS DRIVE  
PORTLAND, MAINE 04102  
800.425.4252 | www.woodardcurran.com

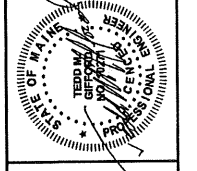


COMMITMENT & INTEGRITY DRIVE RESULTS

LDD PROJECT NAME:	
DRAWING NAME:	2039A365-ED06.DWG
FIELD BOOK USED:	
DATE:	6/12/2009
DESCRIPTION:	ADDITIONUM 1
REV:	1

**REFERENCES:**  
STRUC\_J63001.dwg

DESIGNED BY:	KRM	DATE:	05/22/2009
DRAWN BY:	KRM	SCALE:	AS NOTED
CHECKED BY:	TWG		



BAYSIDE TRAIL  
ELECTRICAL DETAILS - 2

CITY OF PORTLAND, MAINE  
PUBLIC SERVICES DEPARTMENT  
ENGINEERING SECTION



D:\2039A3 City of Portland-General Engineering Services\wp\_105 Bayside Trail\DRAWINGS\2039A365-ED06.dwg, Jun 12, 2009 2:47pm