

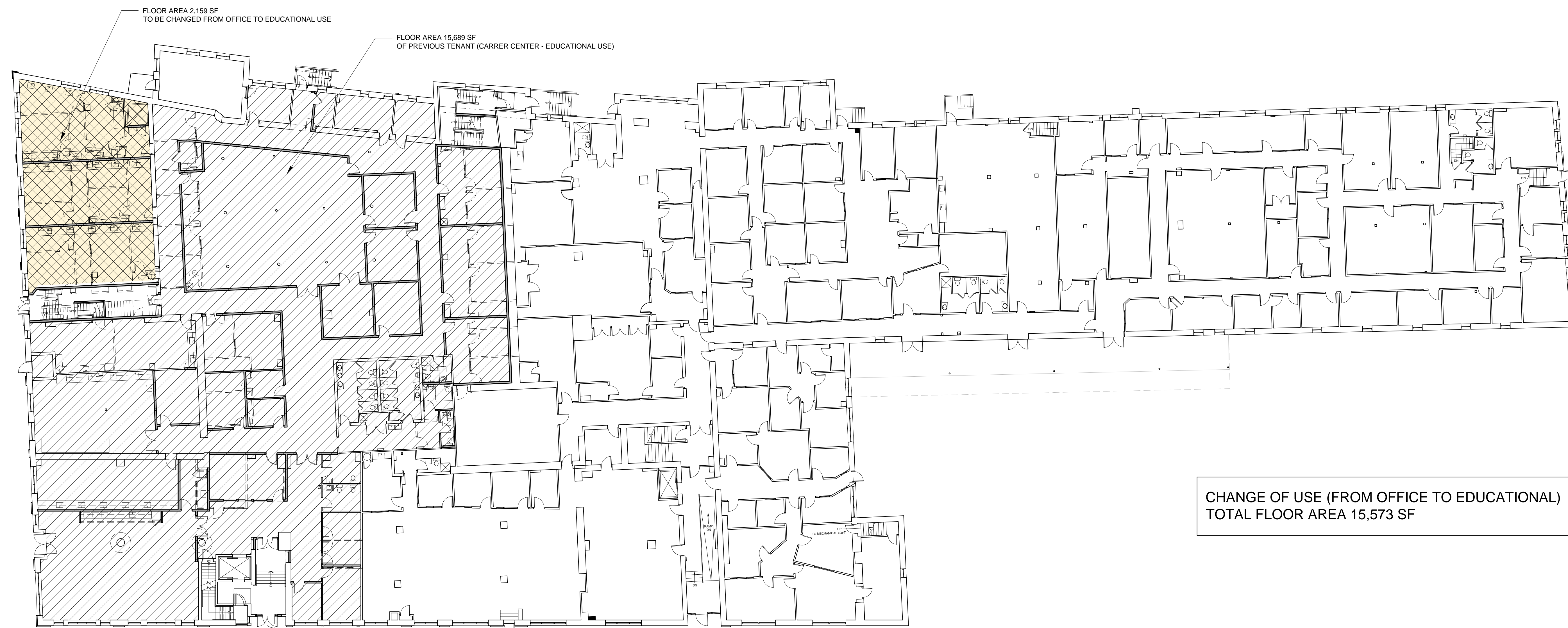
# BAXTER ACADEMY - INTERIOR FIT-UP

185 LANCASTER STREET PORTLAND, MAINE

DECEMBER 23, 2016



2 SECOND FLOOR PLAN  
1/16" = 1'-0"



1 FIRST FLOOR PLAN  
1/16" = 1'-0"

CHANGE OF USE (FROM OFFICE TO EDUCATIONAL)  
TOTAL FLOOR AREA 15,573 SF

PROGRESS PRINT ONLY  
Not for Construction

RYAN SENATORE ARCHITECTURE