

SUBMITTAL

Job Title: BAXTER FANS

Contractor: HVAC SERVICES

Elevation: (ft) 62

Date: 5/10/2017

Submitted By: Jeff Berry

BUCKLEY ASSOCIATES INC

510 MAIN STREET

GORHAM, ME 04038

US

Phone: (207)773-0078

Fax: (207)773-0074

Email Address: jberry@buckleyonline.com

SUBMITTAL NOTES:

EXHAUST FANS

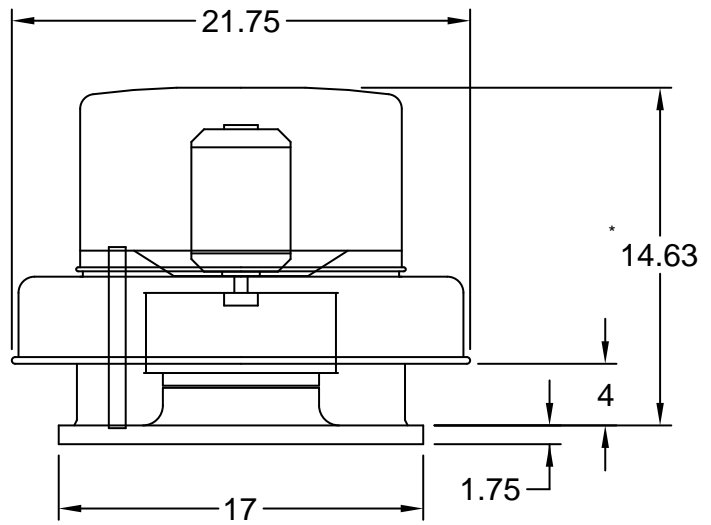


P.O. Box 410 Schofield, WI 54476 (715) 359-6171 FAX (715) 355-2399 www.greenheck.com

Generated by: jberry@buckleyonline.com

R:\Job Files\Greenheck\2017\BAXTER FANS.gfcj

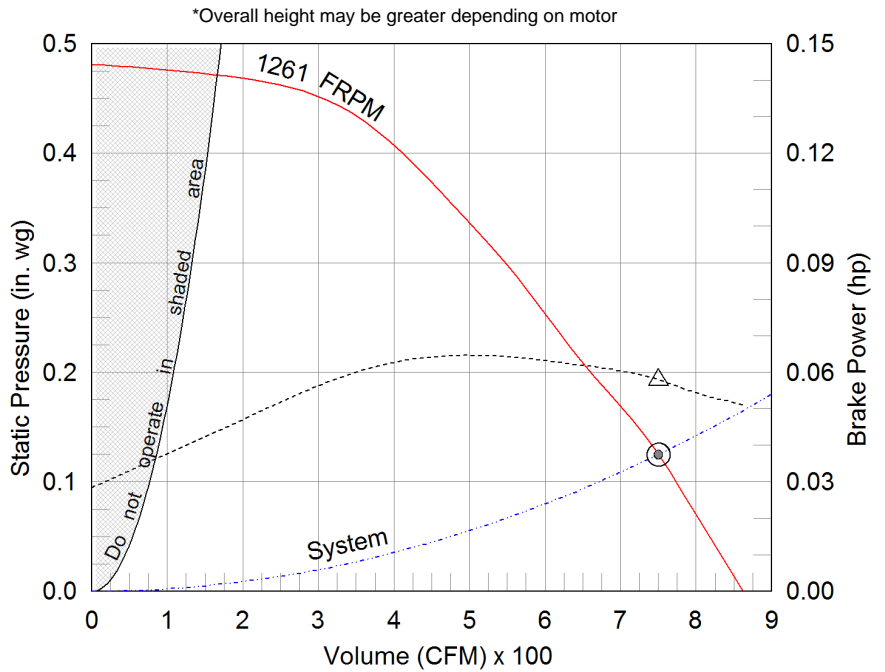
Model: G-095-D
Direct Drive Centrifugal Roof Exhaust Fan



Dimensional	
Quantity	1
Weight w/o Acc's (lb)	28
Weight w/ Acc's (lb)	31
Roof Opening (in.)	12.5 x 12.5

Performance	
Requested Volume (CFM)	750
Actual Volume (CFM)	750
External SP (in. wg)	0.125
Total SP (in. wg)	0.125
Fan RPM	1261
Operating Power (hp)	0.06
Elevation (ft)	62
Airstream Temp.(F)	70
Air Density (lb/ft3)	0.075
Tip Speed (ft/min)	3,591
Static Eff. (%)	25

Motor	
Motor Mounted	Yes
Size (hp)	1/8 (or greater)
Voltage/Cycle/Phase	115/60/1
Enclosure	ODP
Motor RPM	1550
Windings	1



- △ Operating Bhp point
- Operating point at Total SP
- Operating point at External SP
- Fan curve
- - - System curve
- - - Brake horsepower curve

Sound Power by Octave Band

Sound Data	62.5	125	250	500	1000	2000	4000	8000	LwA	dBA	Sones
Inlet	74	71	66	58	53	54	48	40	63	51	6.3

Notes:

All dimensions shown are in units of in.
*Please consult factory for actual motor amp draw
LwA - A weighted sound power level, based on ANSI S1.4
dBA - A weighted sound pressure level, based on 11.5 dB attenuation per Octave band at 5 ft - dBA levels are not licensed by AMCA International
Sones - calculated using AMCA 301 at 5 ft



Model: G-095-D

Direct Drive Centrifugal Roof Exhaust Fan

Standard Construction Features:

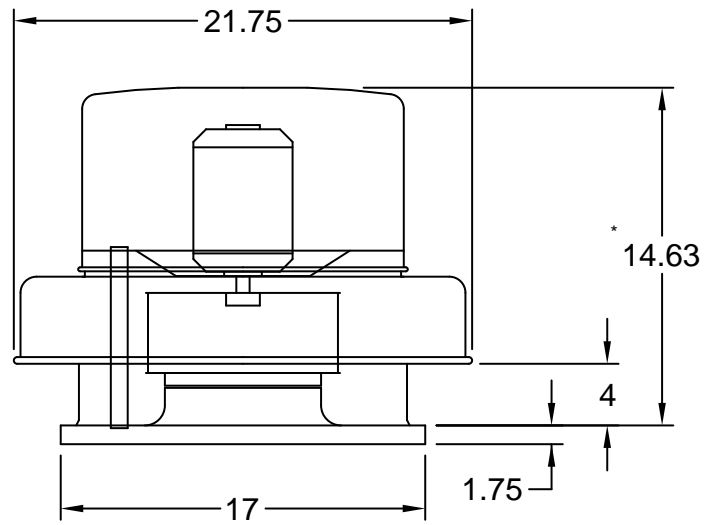
- Aluminum housing - Backward inclined wheel - Aluminum curb cap with prepunched mounting holes - Birdscreen - Ball bearing motors (sizes 100-180), sleeve bearing motors (sizes 60-95) - Motor isolated on shock mounts - Corrosion resistant fasteners

Selected Options & Accessories:

Motor with Thermal Overload
UL/cUL 705 Listed - "Power Ventilators"
Switch, NEMA-1, Toggle, Shipped with Unit
Junction Box Mounted & Wired
Solid State Speed Control, 6 Amp, Shipped Loose
Unit Warranty: 1 Yr (Standard)

Model: G-095-D

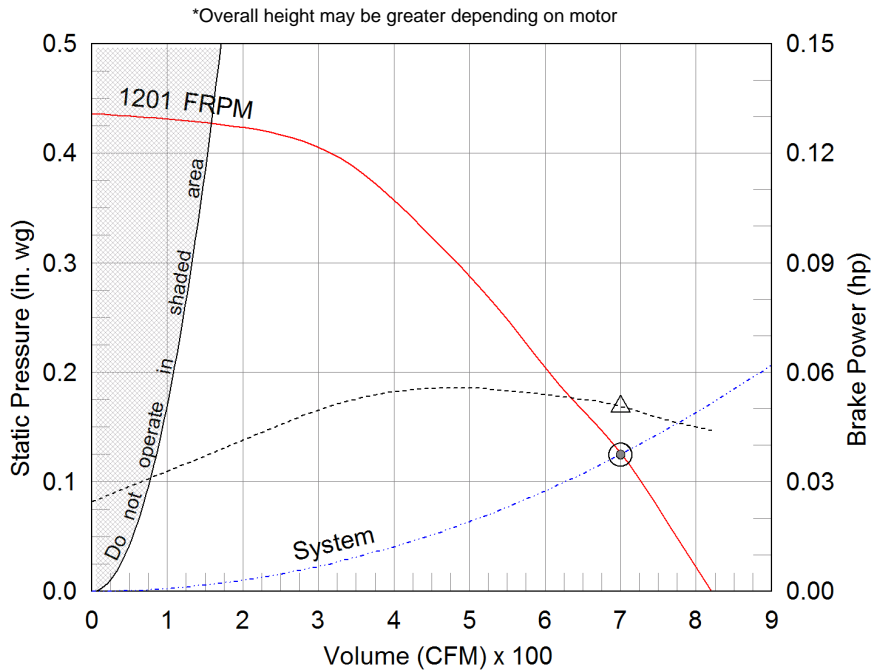
Direct Drive Centrifugal Roof Exhaust Fan



Dimensional	
Quantity	1
Weight w/o Acc's (lb)	28
Weight w/ Acc's (lb)	31
Roof Opening (in.)	12.5 x 12.5

Performance	
Requested Volume (CFM)	700
Actual Volume (CFM)	700
External SP (in. wg)	0.125
Total SP (in. wg)	0.125
Fan RPM	1201
Operating Power (hp)	0.05
Elevation (ft)	62
Airstream Temp.(F)	70
Air Density (lb/ft3)	0.075
Tip Speed (ft/min)	3,419
Static Eff. (%)	27

Motor	
Motor Mounted	Yes
Size (hp)	1/8 (or greater)
Voltage/Cycle/Phase	115/60/1
Enclosure	ODP
Motor RPM	1550
Windings	1



- △ Operating Bhp point
- Operating point at Total SP
- Operating point at External SP
- Fan curve
- - - System curve
- - - Brake horsepower curve

Sound Power by Octave Band

Sound Data	62.5	125	250	500	1000	2000	4000	8000	LwA	dBA	Sones
Inlet	73	70	65	57	51	53	46	39	61	50	5.7

Notes:

All dimensions shown are in units of in.
*Please consult factory for actual motor amp draw
LwA - A weighted sound power level, based on ANSI S1.4
dBA - A weighted sound pressure level, based on 11.5 dB attenuation per Octave band at 5 ft - dBA levels are not licensed by AMCA International
Sones - calculated using AMCA 301 at 5 ft



Model: G-095-D

Direct Drive Centrifugal Roof Exhaust Fan

Standard Construction Features:

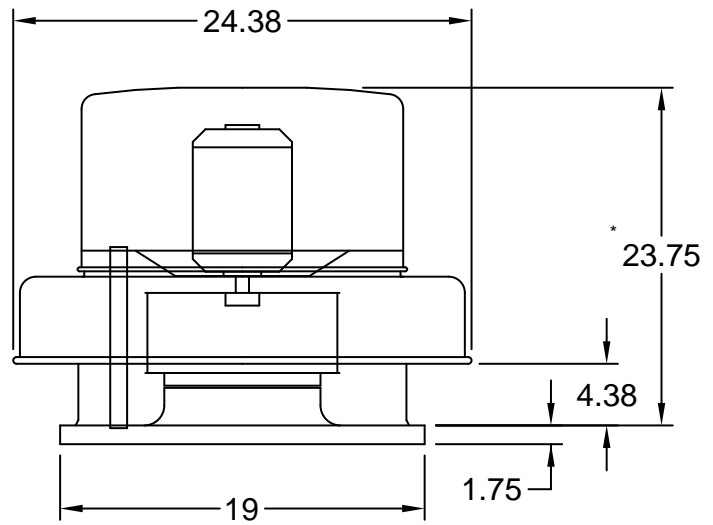
- Aluminum housing - Backward inclined wheel - Aluminum curb cap with prepunched mounting holes - Birdscreen - Ball bearing motors (sizes 100-180), sleeve bearing motors (sizes 60-95) - Motor isolated on shock mounts - Corrosion resistant fasteners

Selected Options & Accessories:

Motor with Thermal Overload
UL/cUL 705 Listed - "Power Ventilators"
Switch, NEMA-1, Toggle, Shipped with Unit
Junction Box Mounted & Wired
Solid State Speed Control, 6 Amp, Shipped Loose
Unit Warranty: 1 Yr (Standard)

Model: G-123-B

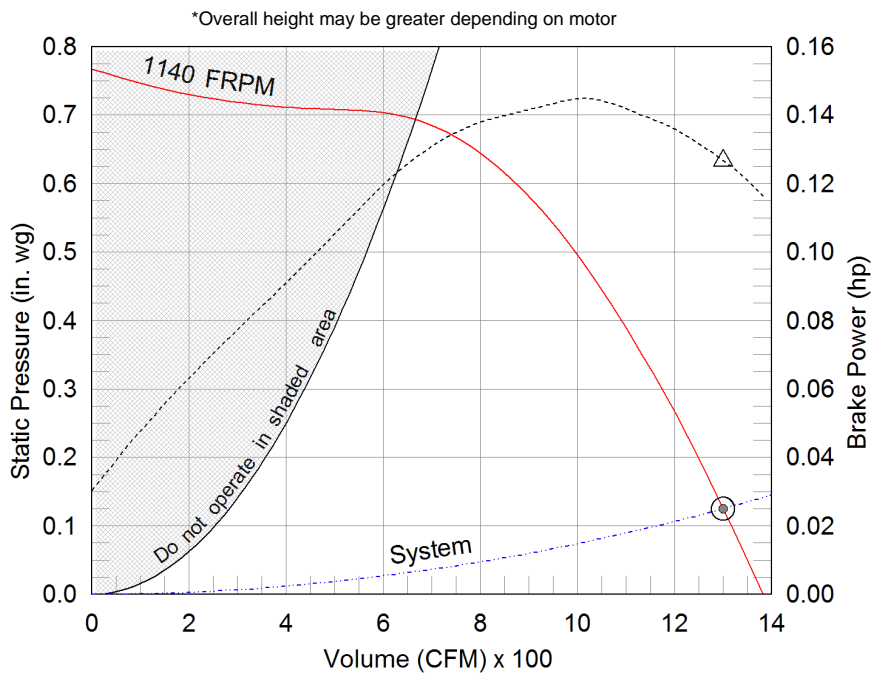
Direct Drive Centrifugal Roof Exhaust Fan



Dimensional	
Quantity	1
Weight w/o Acc's (lb)	50
Weight w/ Acc's (lb)	53
Max T Motor Frame Size	56
Roof Opening (in.)	14.5 x 14.5

Performance	
Requested Volume (CFM)	1,300
Actual Volume (CFM)	1,300
External SP (in. wg)	0.125
Total SP (in. wg)	0.125
Fan RPM	1140
Operating Power (hp)	0.13
Elevation (ft)	62
Airstream Temp.(F)	70
Air Density (lb/ft3)	0.075
Tip Speed (ft/min)	3,898
Static Eff. (%)	20

Motor	
Motor Mounted	Yes
Size (hp)	1/6
Voltage/Cycle/Phase	115/60/1
Enclosure	ODP
Motor RPM	1140
Windings	1



- △ Operating Bhp point
- Operating point at Total SP
- Operating point at External SP
- Fan curve
- - - System curve
- - - Brake horsepower curve

Sound Power by Octave Band

Sound Data	62.5	125	250	500	1000	2000	4000	8000	LwA	dBA	Sones
Inlet	69	72	72	66	59	58	52	51	68	57	8.4

Notes:

All dimensions shown are in units of in.
*Please consult factory for actual motor amp draw
LwA - A weighted sound power level, based on ANSI S1.4
dBA - A weighted sound pressure level, based on 11.5 dB attenuation per Octave band at 5 ft - dBA levels are not licensed by AMCA International
Sones - calculated using AMCA 301 at 5 ft



Model: G-123-B

Direct Drive Centrifugal Roof Exhaust Fan

Standard Construction Features:

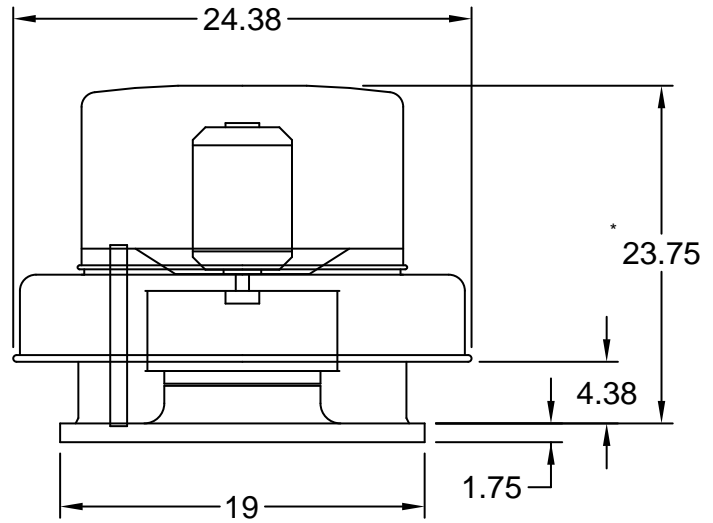
- Aluminum housing - Backward inclined wheel - Aluminum curb cap with prepunched mounting holes - Birdscreen - Ball bearing motors (sizes 100-180), sleeve bearing motors (sizes 60-95) - Motor isolated on shock mounts - Corrosion resistant fasteners

Selected Options & Accessories:

Motor with Thermal Overload
PSC Motor
UL/cUL 705 Listed - "Power Ventilators"
Switch, NEMA-1, Toggle, Shipped with Unit
Junction Box Mounted & Wired
Solid State Speed Control, 6 Amp, Shipped Loose
Unit Warranty: 1 Yr (Standard)

Model: G-123-B

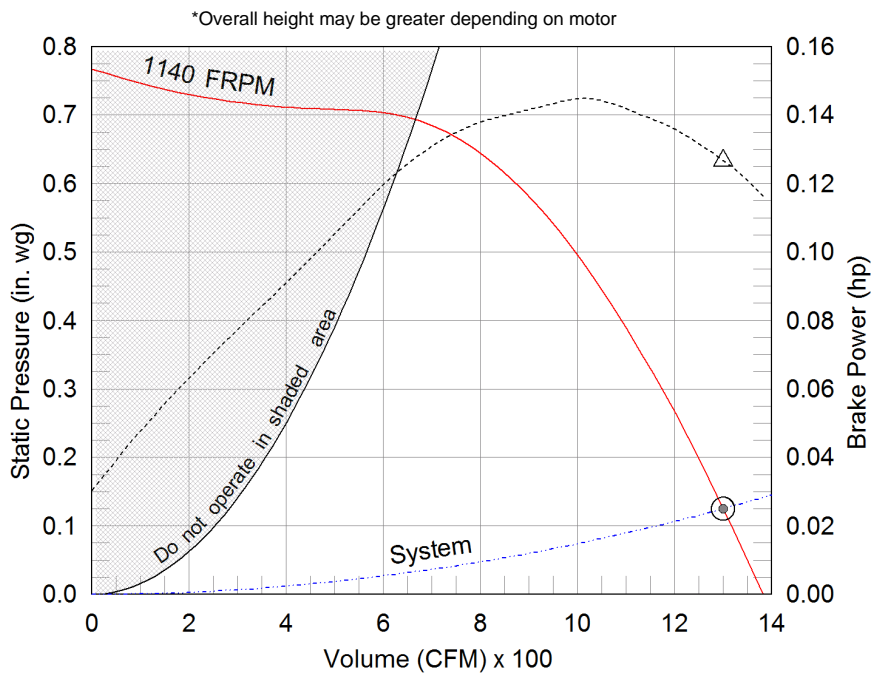
Direct Drive Centrifugal Roof Exhaust Fan



Dimensional	
Quantity	1
Weight w/o Acc's (lb)	50
Weight w/ Acc's (lb)	53
Max T Motor Frame Size	56
Roof Opening (in.)	14.5 x 14.5

Performance	
Requested Volume (CFM)	1,300
Actual Volume (CFM)	1,300
External SP (in. wg)	0.125
Total SP (in. wg)	0.125
Fan RPM	1140
Operating Power (hp)	0.13
Elevation (ft)	62
Airstream Temp.(F)	70
Air Density (lb/ft3)	0.075
Tip Speed (ft/min)	3,898
Static Eff. (%)	20

Motor	
Motor Mounted	Yes
Size (hp)	1/6
Voltage/Cycle/Phase	115/60/1
Enclosure	ODP
Motor RPM	1140
Windings	1



- △ Operating Bhp point
- Operating point at Total SP
- Operating point at External SP
- Fan curve
- - - System curve
- - - Brake horsepower curve

Sound Power by Octave Band

Sound Data	62.5	125	250	500	1000	2000	4000	8000	LwA	dBA	Sones
Inlet	69	72	72	66	59	58	52	51	68	57	8.4

Notes:

All dimensions shown are in units of in.
*Please consult factory for actual motor amp draw
LwA - A weighted sound power level, based on ANSI S1.4
dBA - A weighted sound pressure level, based on 11.5 dB attenuation per Octave band at 5 ft - dBA levels are not licensed by AMCA International
Sones - calculated using AMCA 301 at 5 ft



Model: G-123-B

Direct Drive Centrifugal Roof Exhaust Fan

Standard Construction Features:

- Aluminum housing - Backward inclined wheel - Aluminum curb cap with prepunched mounting holes - Birdscreen - Ball bearing motors (sizes 100-180), sleeve bearing motors (sizes 60-95) - Motor isolated on shock mounts - Corrosion resistant fasteners

Selected Options & Accessories:

Motor with Thermal Overload
PSC Motor
UL/cUL 705 Listed - "Power Ventilators"
Switch, NEMA-1, Toggle, Shipped with Unit
Junction Box Mounted & Wired
Solid State Speed Control, 6 Amp, Shipped Loose
Unit Warranty: 1 Yr (Standard)