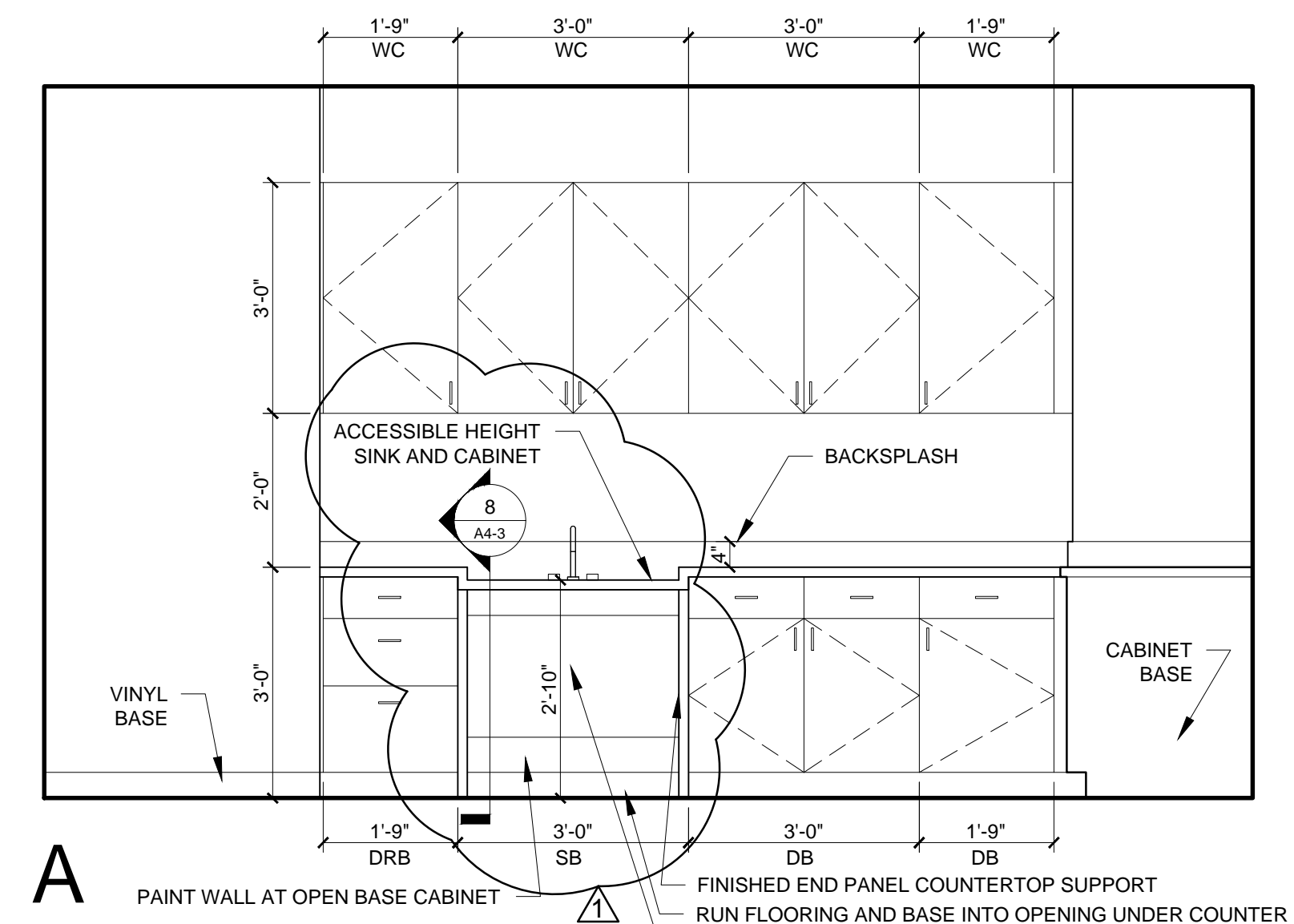
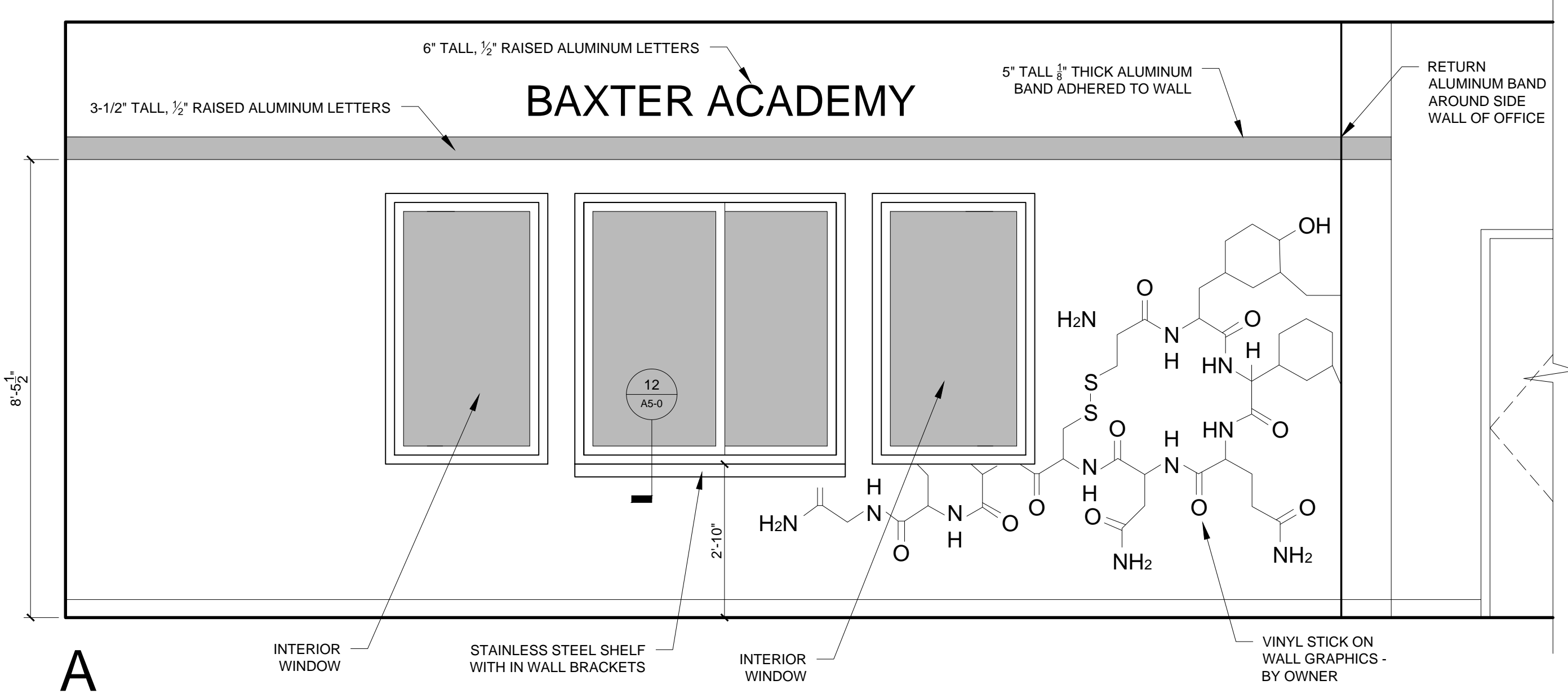
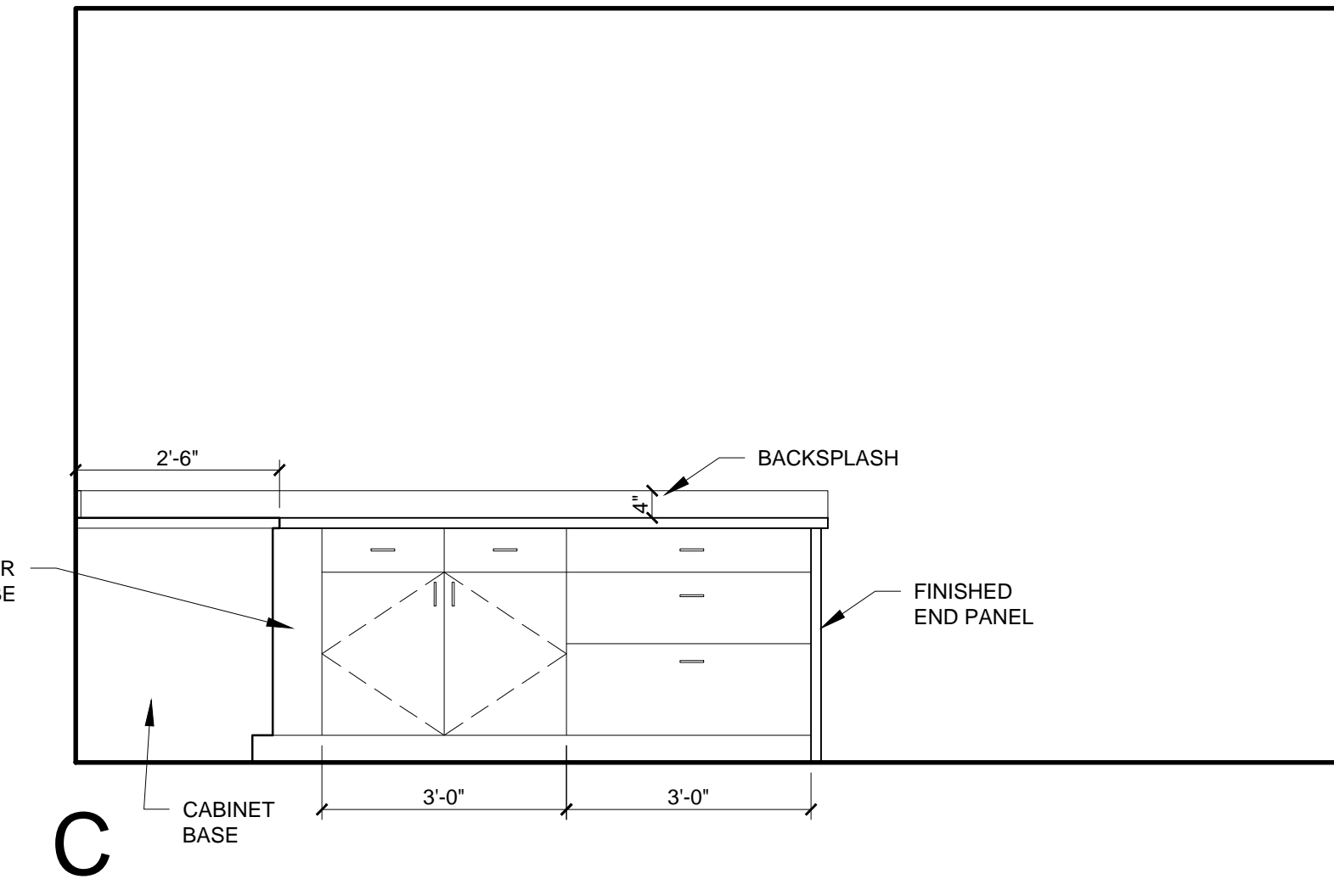
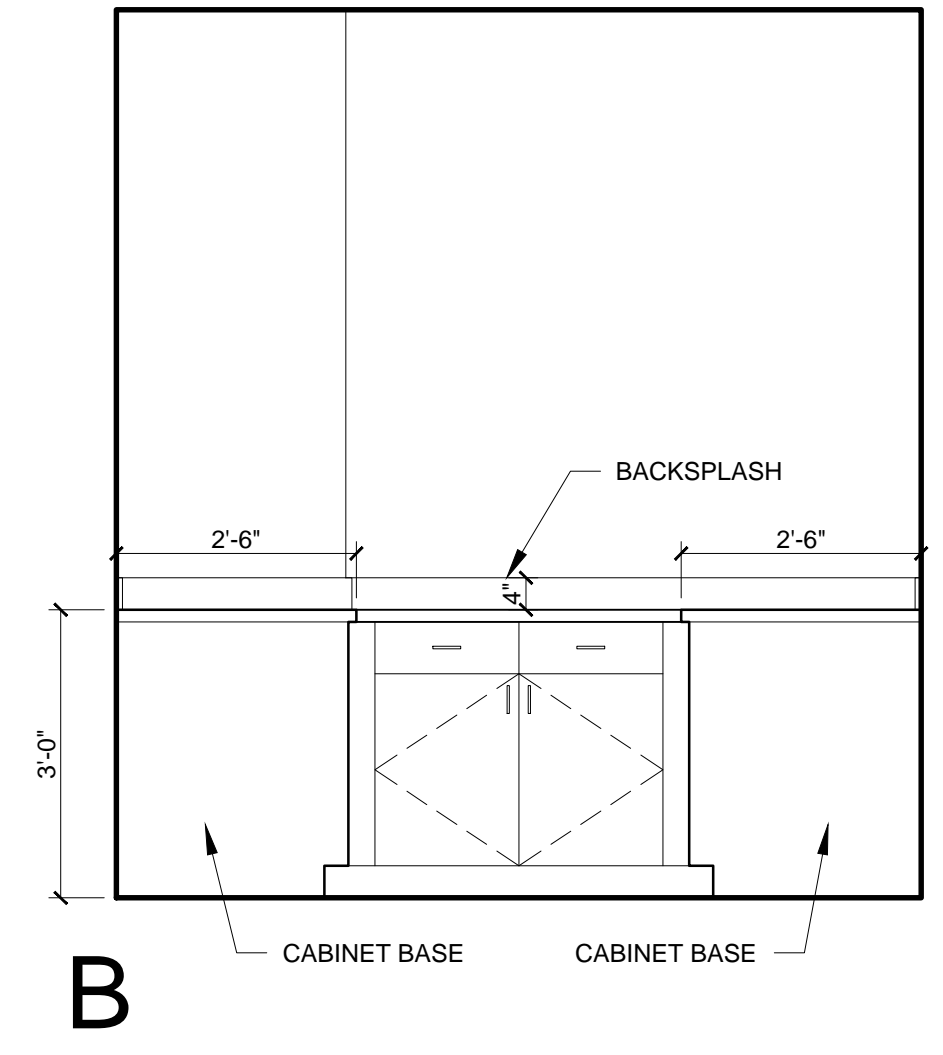


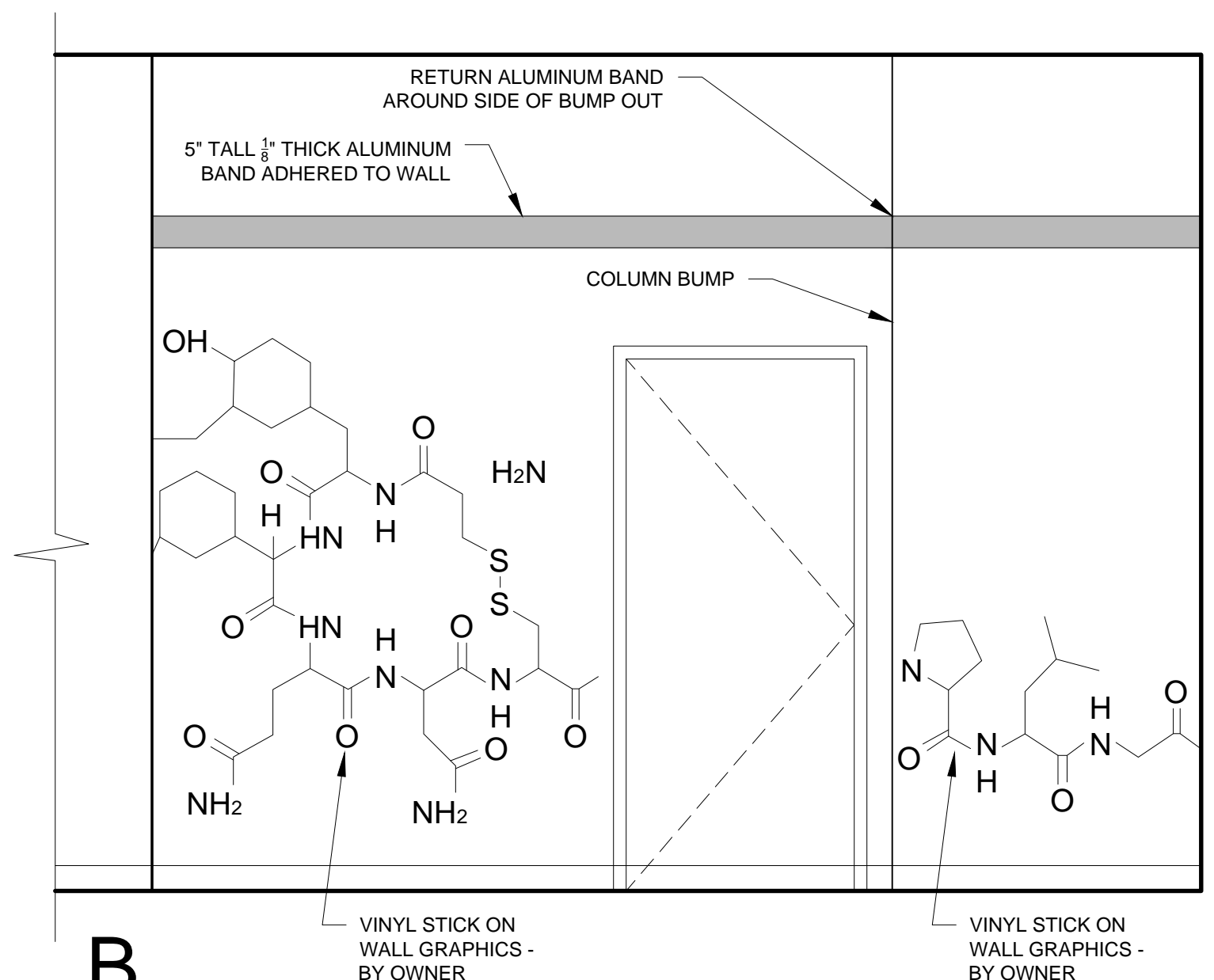
1 TEACHER KITCHENETTE (205)  
1/2" = 1'-0"



2 DARK ROOM (222A)  
1/2" = 1'-0"

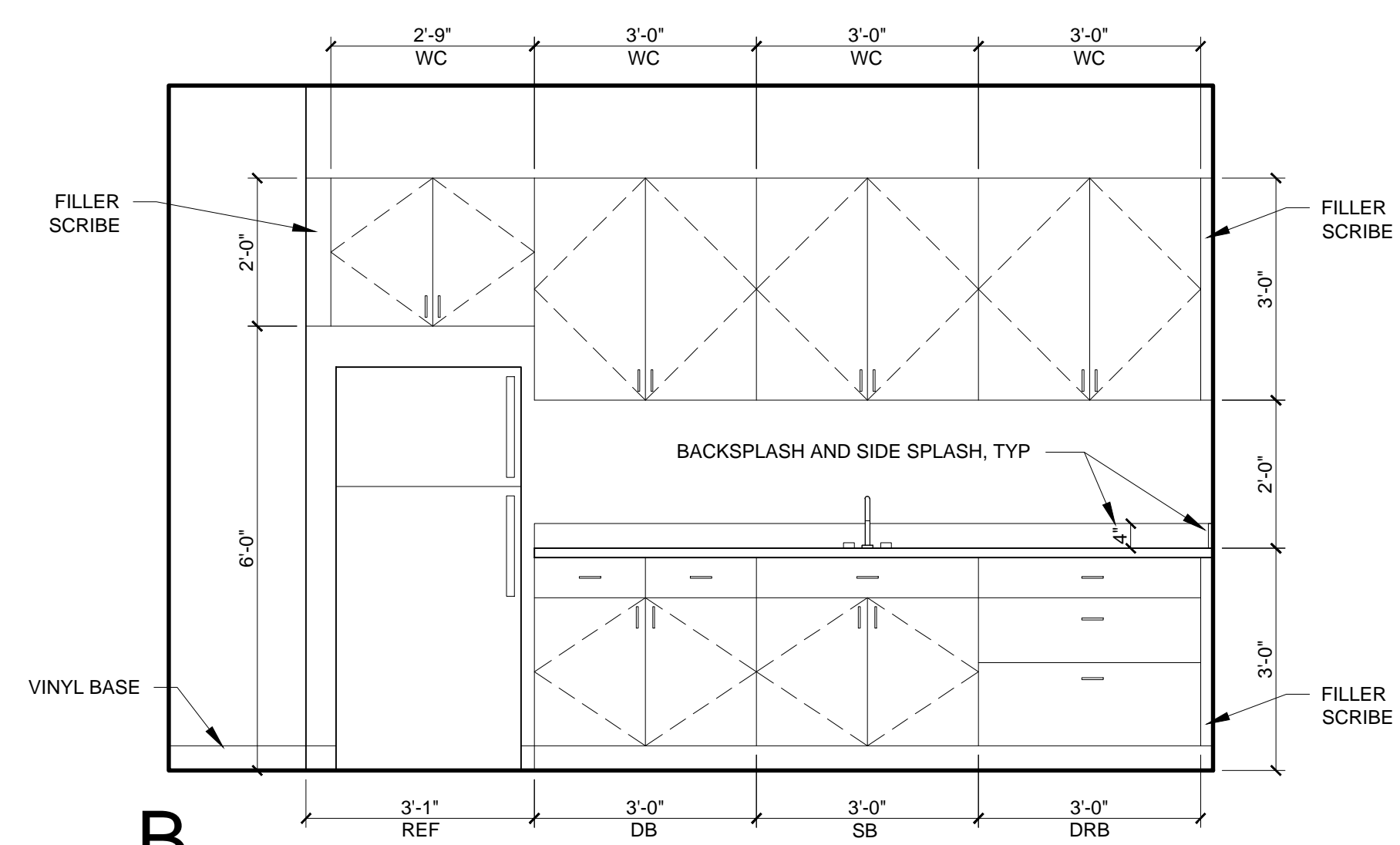


3 LOBBY 102  
1/2" = 1'-0"



4 LOBBY 102  
1/2" = 1'-0"

- NOTES**
- G.C. TO CONFIRM AND COORDINATE ALL ROUGH FRAMING DIMENSIONS FOR BUILT-IN FIXTURES ETC. G.C. TO CONFIRM AND COORDINATE ALL CABINETS AND APPLIANCES DIMENSIONS
  - PROVIDE APPROPRIATE BLOCKING IN WALLS BEHIND ALL FIXTURES, PARTITIONS AND ACCESSORIES. BLOCKING FOR GRAB BARS TO BE PROVIDED IN WALLS OF BATHROOMS
  - PROVIDE MOISTURE RESISTANT GWB AT ALL WALLS AND CEILINGS IN BATHROOMS TYPICAL
  - REFER TO ELECTRICAL AND MECHANICAL DRAWINGS FOR ADDITIONAL INFORMATION REGARDING LIGHTING, DIFFUSERS, ETC.
  - WHERE DROPPED SOFFITS AND CEILINGS ARE SHOWN, THESE ARE IN ADDITION TO THE FIRE RATED GWB CEILING ABOVE WHICH IS PART OF THE RATED ASSEMBLY
  - WHERE PLUMBING VALVES ARE LOCATED IN FIRE RATED WALLS, PROVIDE FIRE RATED BOX IN WALL FOR VALVE TO BE INSTALLED WITHIN
- CABINETRY AND APPLIANCE ABBREVIATIONS**
- DB = DRAWER BASE
  - DRB = DOOR BASE
  - SB = SINK BASE
  - WC = WALL CABINET
  - DW = DISHWASHER
  - REF = REFRIGERATOR



5 TEACHER KITCHENETTE (110A)  
1/2" = 1'-0"

