



© 2017 RYAN SENATORE ARCHITECTURE

BAXTER ACADEMY
 INTERIOR FIT-UP
 185 LANCASTER STREET, PORTLAND, MAINE

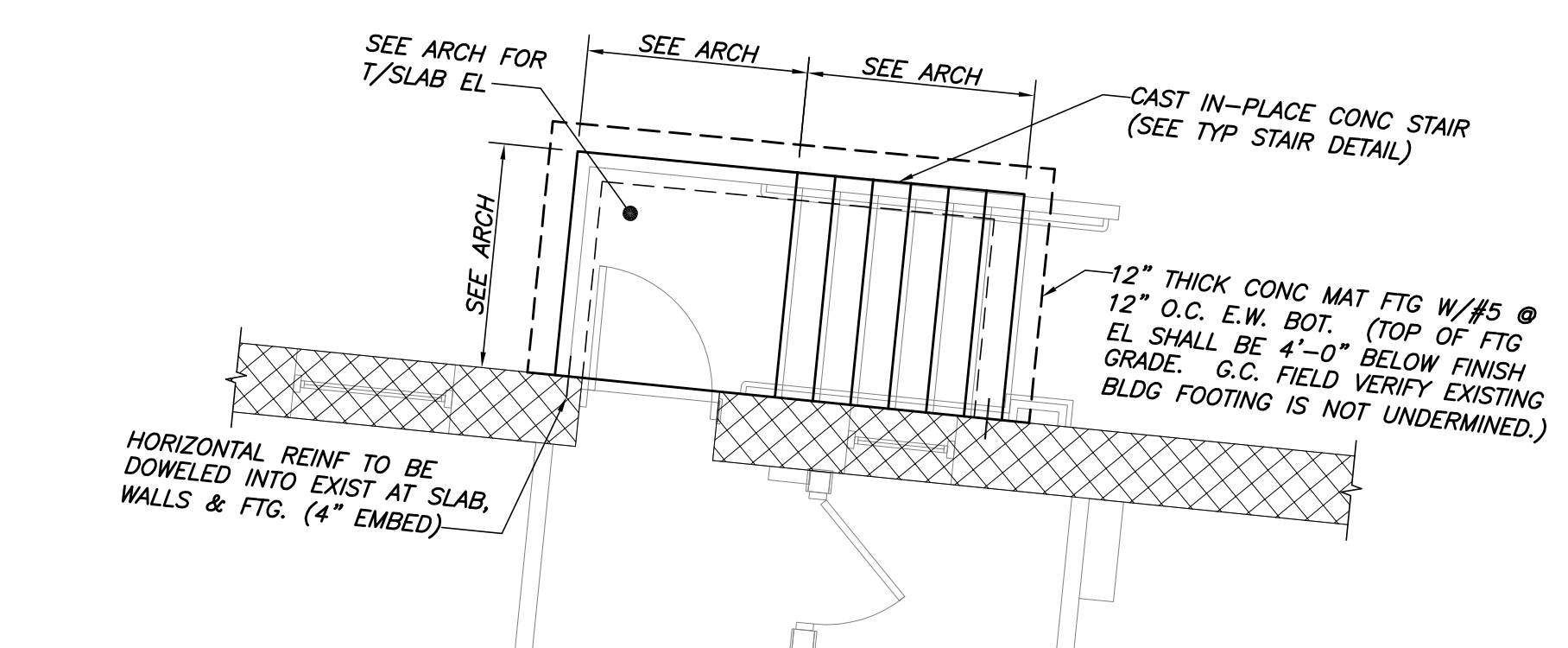


CONSULTANTS:
BECKER
 215 Commercial Street, Portland, Maine 04101
 207.791.1858 • beckermaine.com

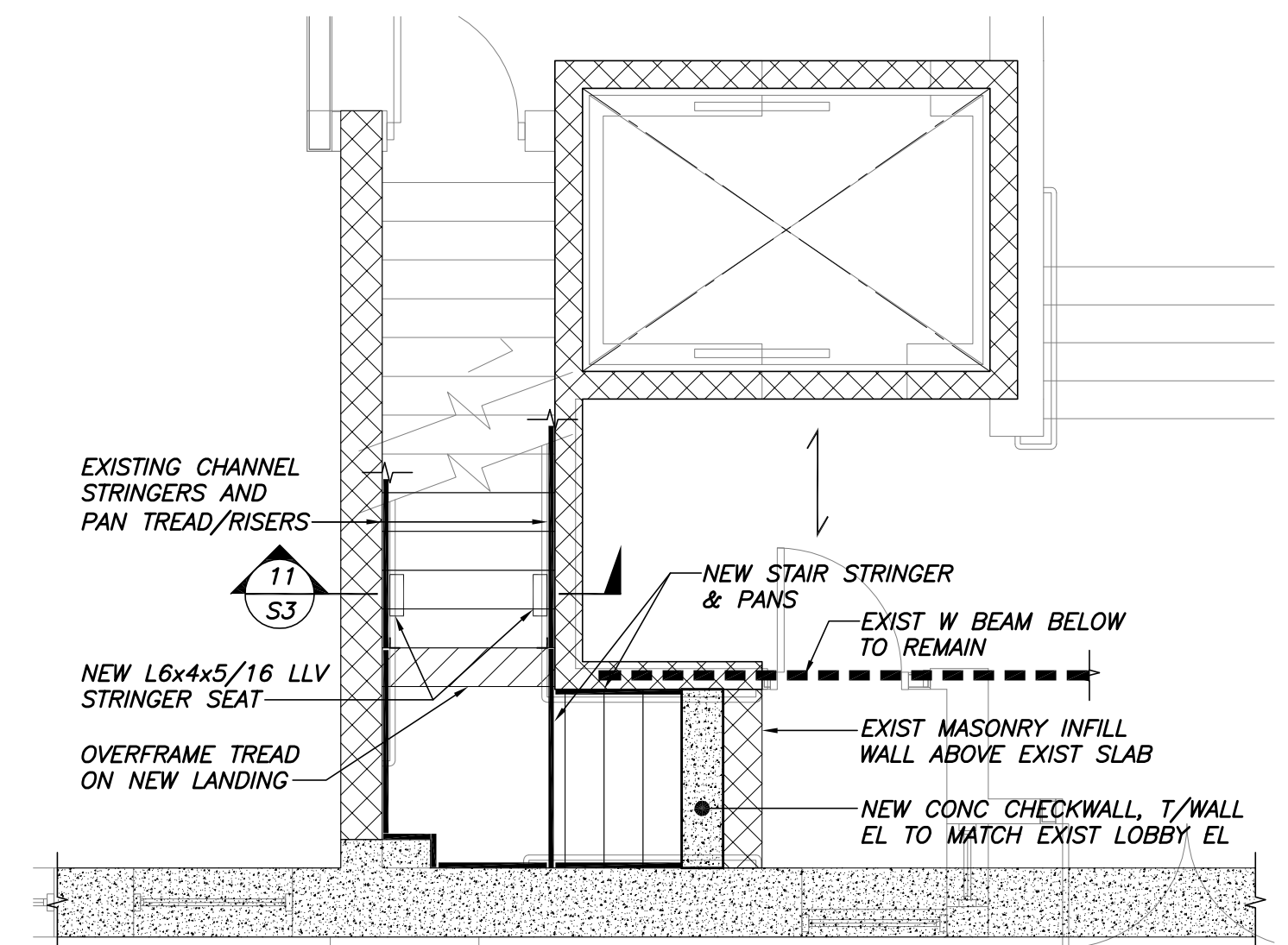
REVISIONS:
 DATE: 27 JANUARY 2017
 PROJECT No. 3970
 DRAWN BY: MSK
 CHECKED BY: NRM
 SCALE: AS NOTED

SHEET TITLE:
 FOUNDATION AND FLOOR FRAMING PART PLANS

S2

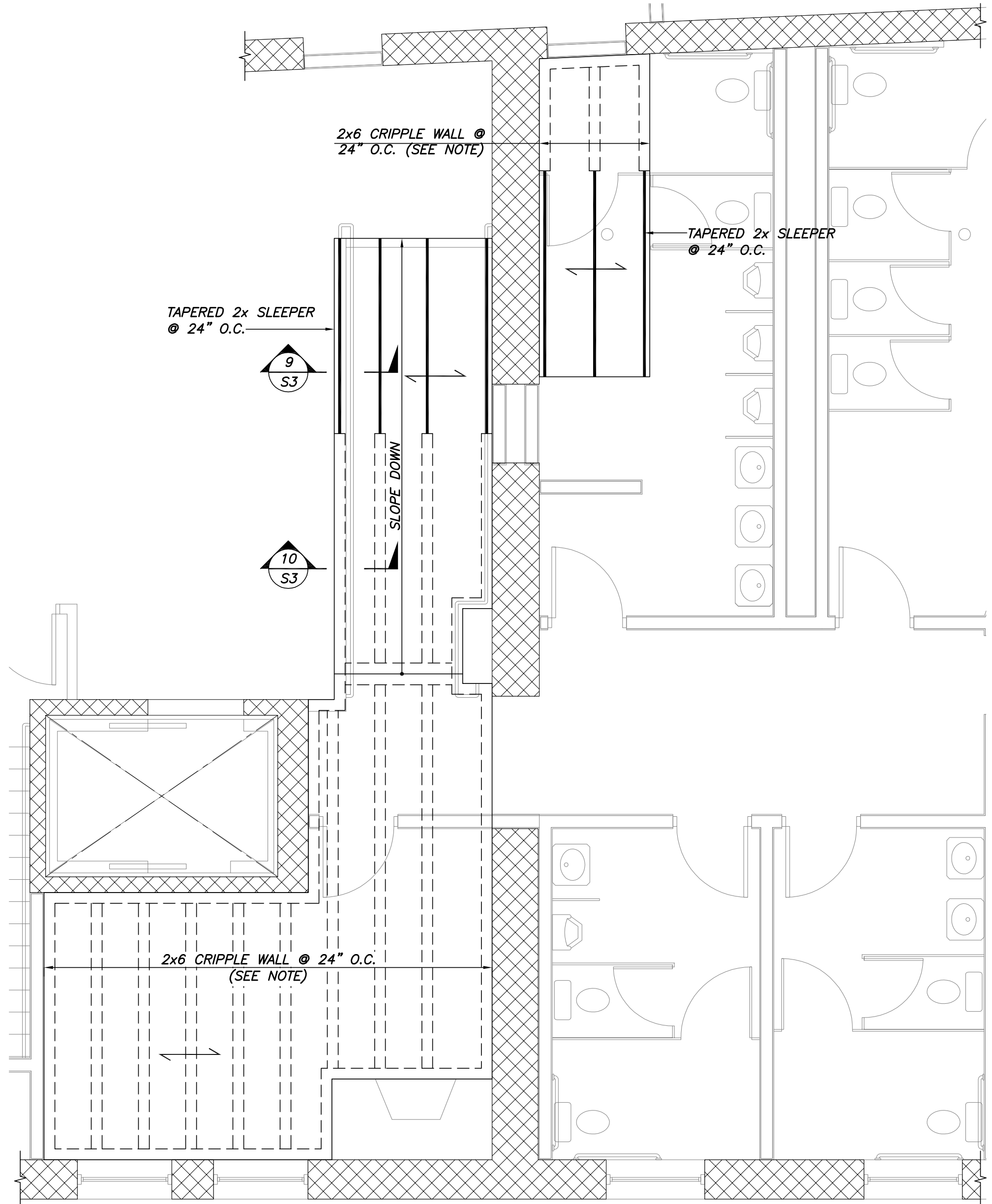


KENNEBEC STREET EXTERIOR EGRESS STAIR FDN PART PLAN
 1/4"=1'-0"



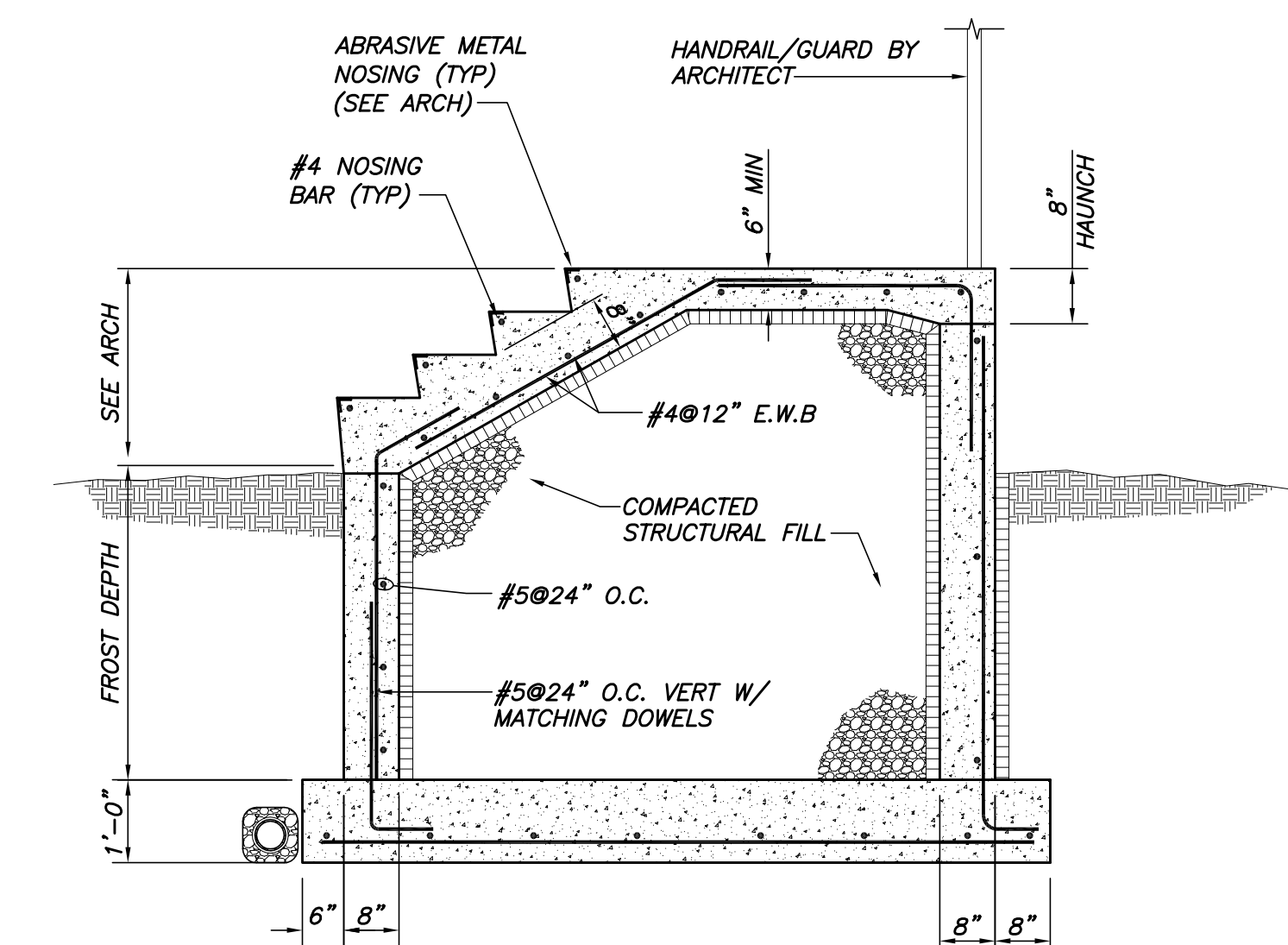
LOWER LOBBY & SOUTH STAIR PART FRAMING PLAN
 1/4"=1'-0"

NOTES:
 1. INDICATES EXISTING CONC SLAB ON MTL DECK OF UNKNOWN DEPTH.
 2. STAIR FABRICATOR TO DEVELOP & SUBMIT STAIR ERECTION PLANS, SECTIONS, DETAILS, AND CALCS FOR ARCHITECT & ENGINEER REVIEW/COMMENT.



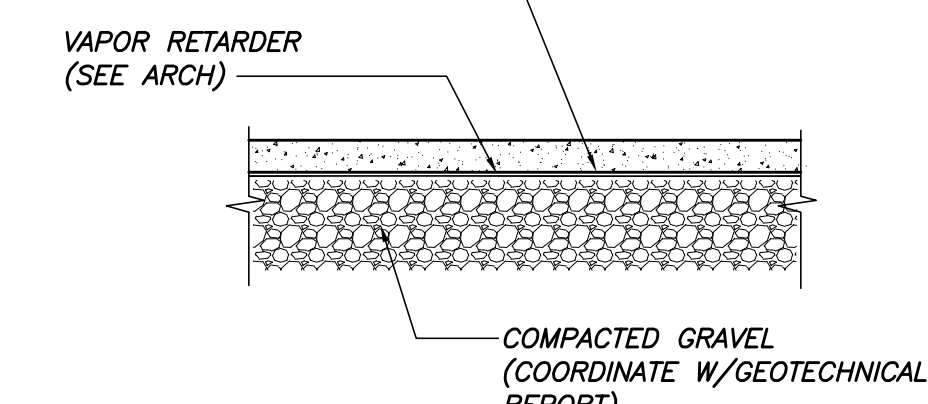
UPPER LOBBY & TOILET SECOND FLOOR FRAMING PART PLAN
 1/4"=1'-0"

NOTES:
 1. CRIPPLE WALLS SHALL BE COMPOSED OF (2)2x6 TOP PLATE STUDS @ 24" O.C. MAX & CONT 2x6 SOLE PLATE. SLOPE TO PLATE AND/OR SOLE PLATE AS REQ'D. FASTEN SOLE PLATE TO EXIST CONC DECK W/ 3/16" TAPCON @ 48" O.C. (1 3/4" EMBED, MIN).
 2. INDICATES SPAN ORIENTATION OF 3/4" T&G FLOOR SHEATHING, GLUED & NAILED. COORDINATE 1/SHGT EL W/ARCHITECT.

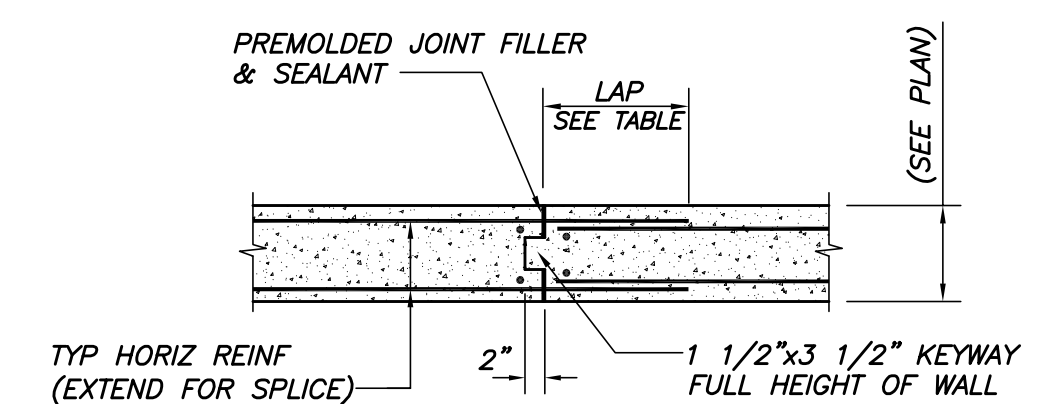


TYP EXTERIOR C.I.P. CONC STAIR DETAIL
 *SEE ARCH FOR TREAD & SLAB FINISH

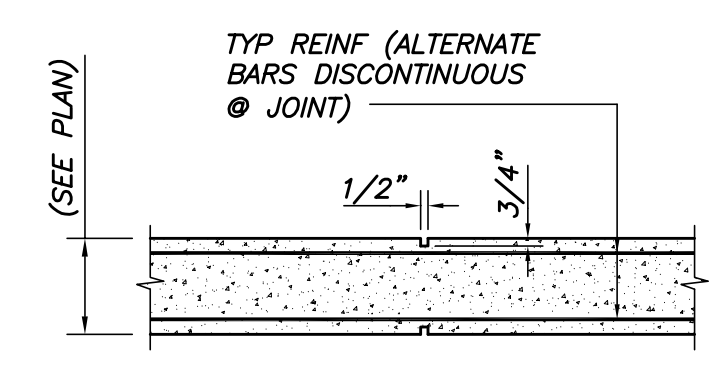
CONC SLAB ON GRADE. ALL SLABS ON GRADE ARE TO BE WET CURED PER ACI 308, LATEST EDITION.



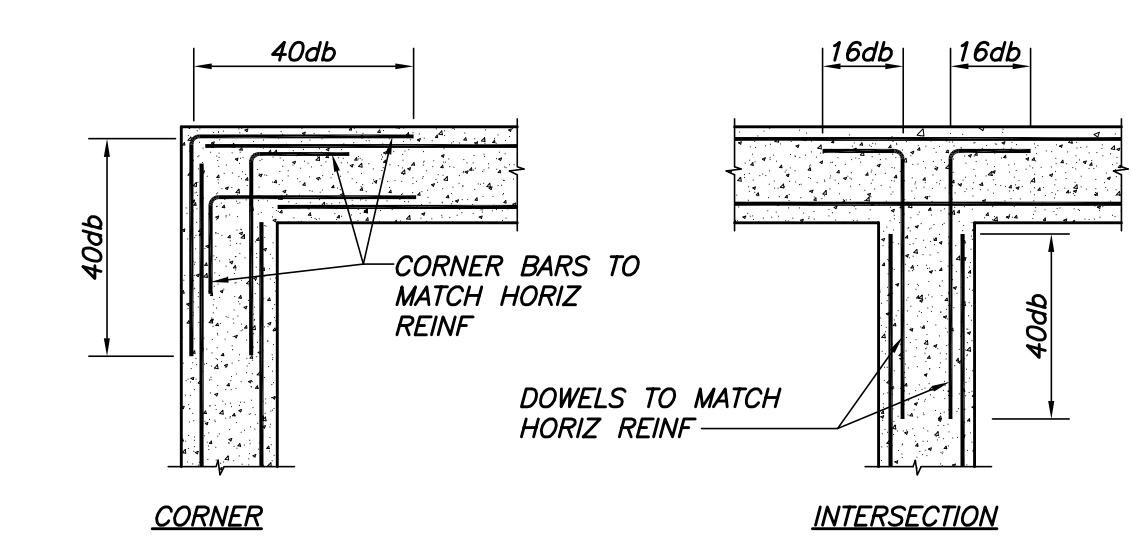
TYP SLAB DETAIL
 N.T.S.



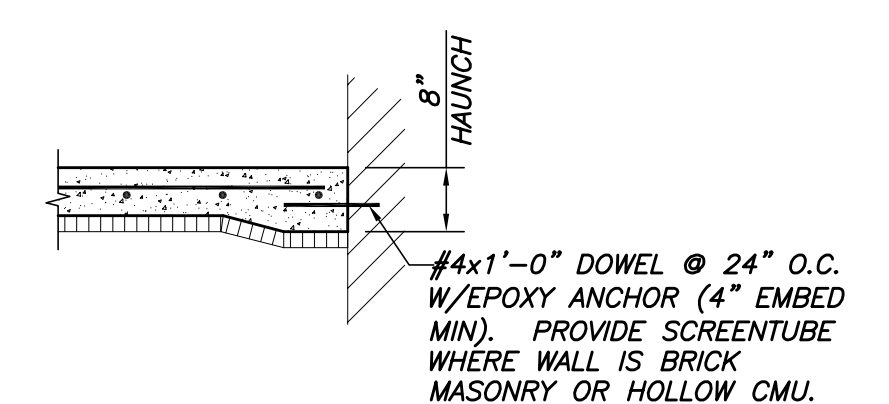
TYP CONSTRUCTION JOINT IN WALL
 N.T.S.



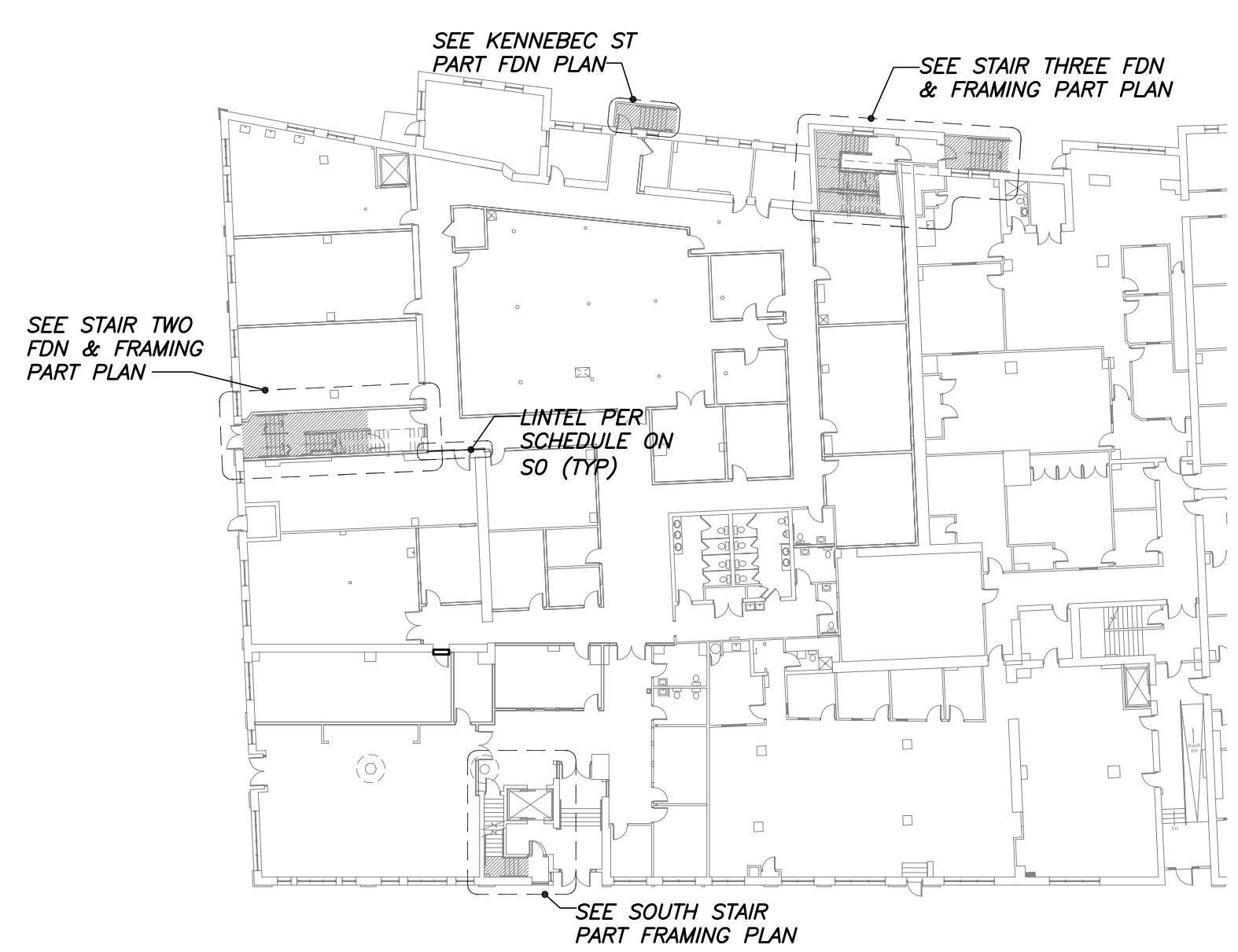
TYP CONTROL JOINT IN WALL
 N.T.S.



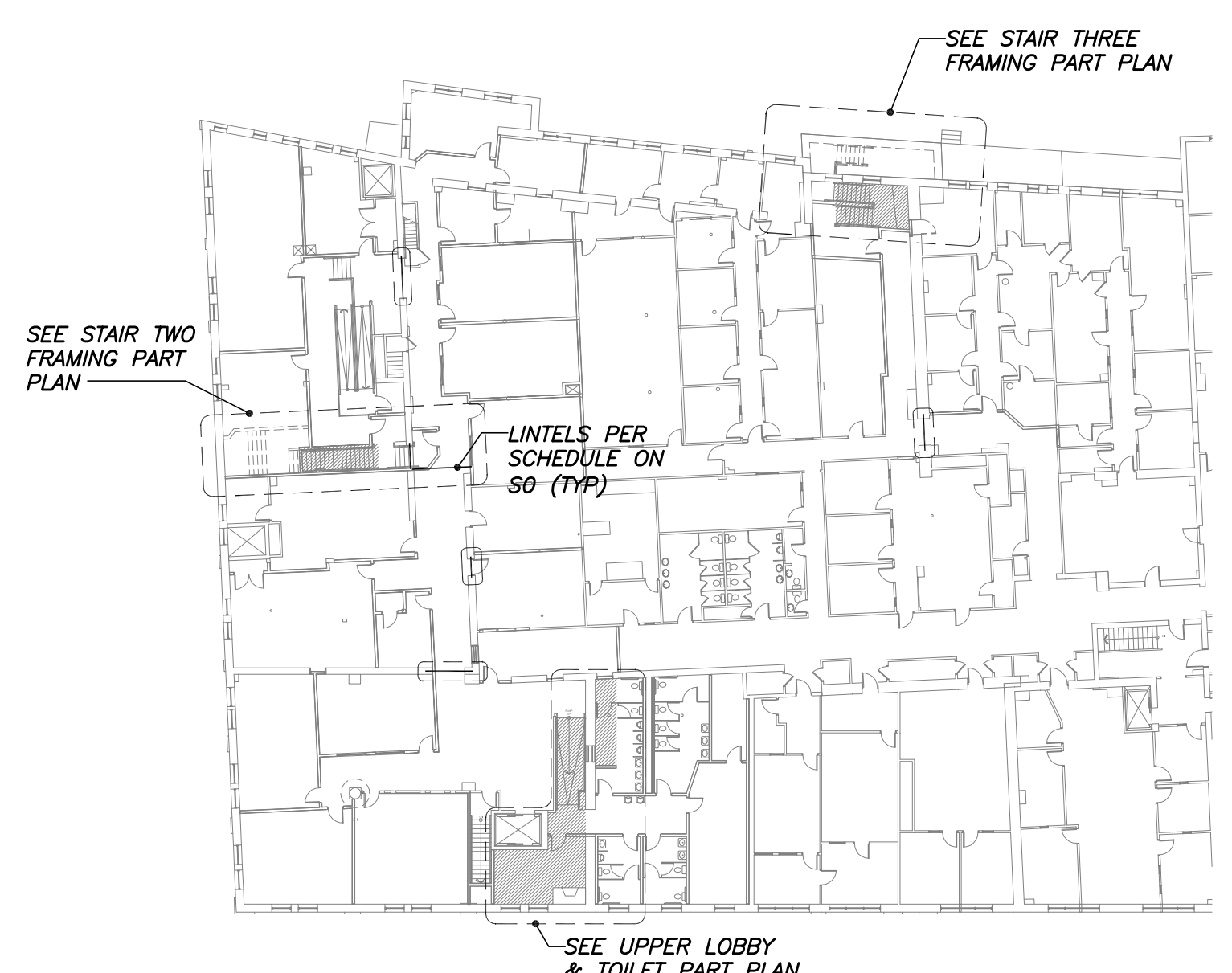
TYP WALL REINF DETAILS
 N.T.S.



TYP SLAB ON GRADE ANCHORAGE TO EXISTING WALL



LEVEL ONE KEY PLAN



LEVEL TWO KEY PLAN