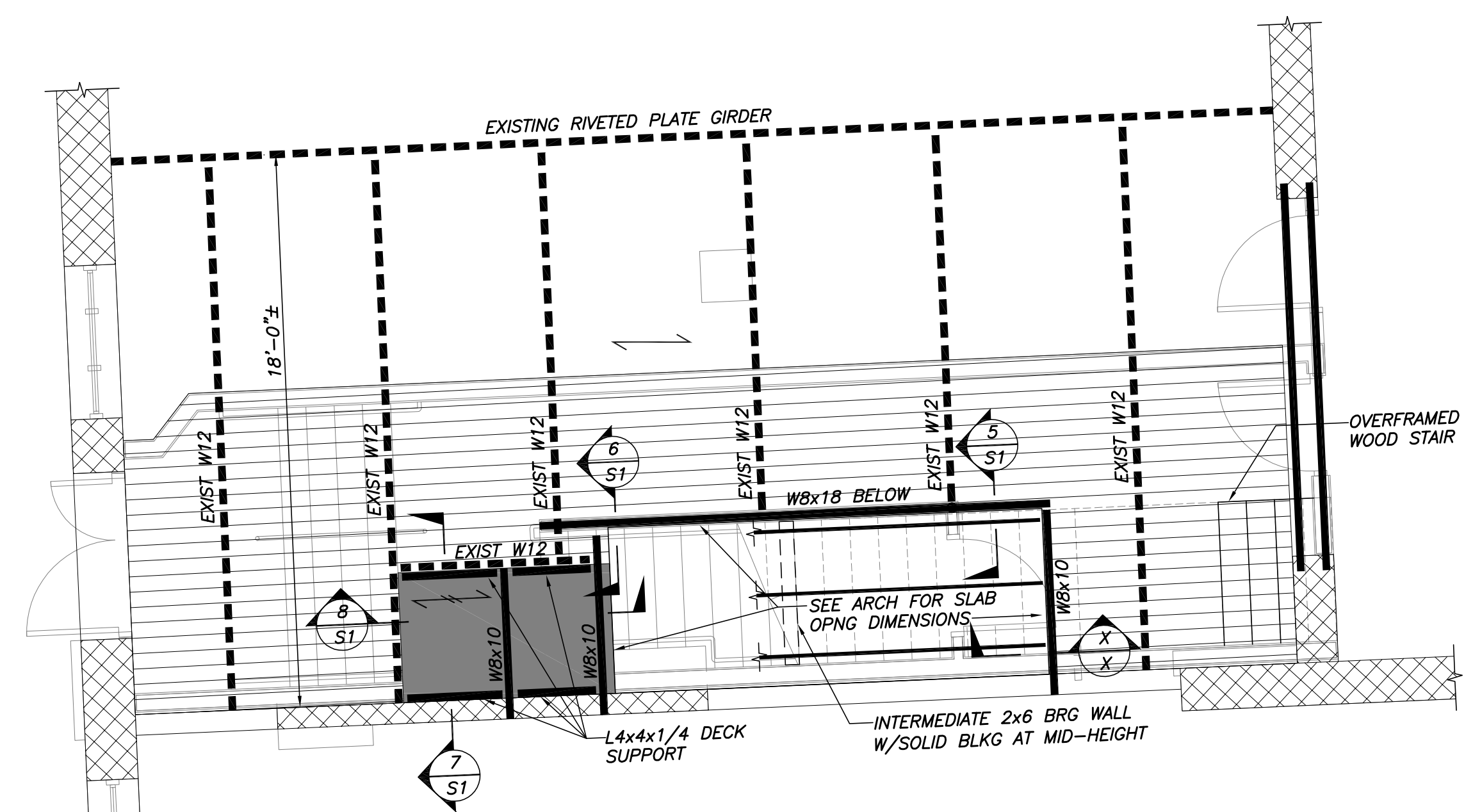
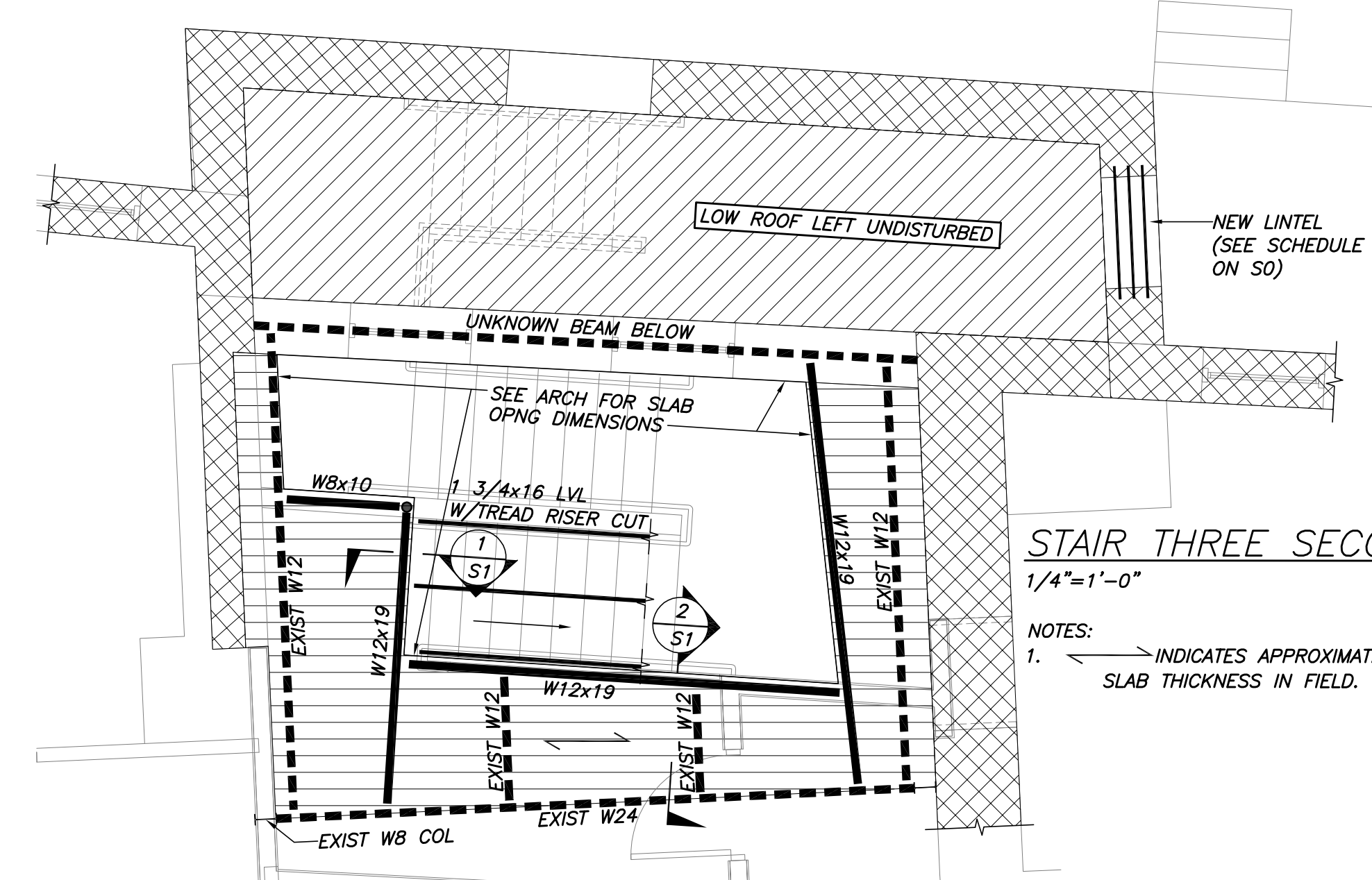


© 2017 RYAN SENATORE ARCHITECTURE



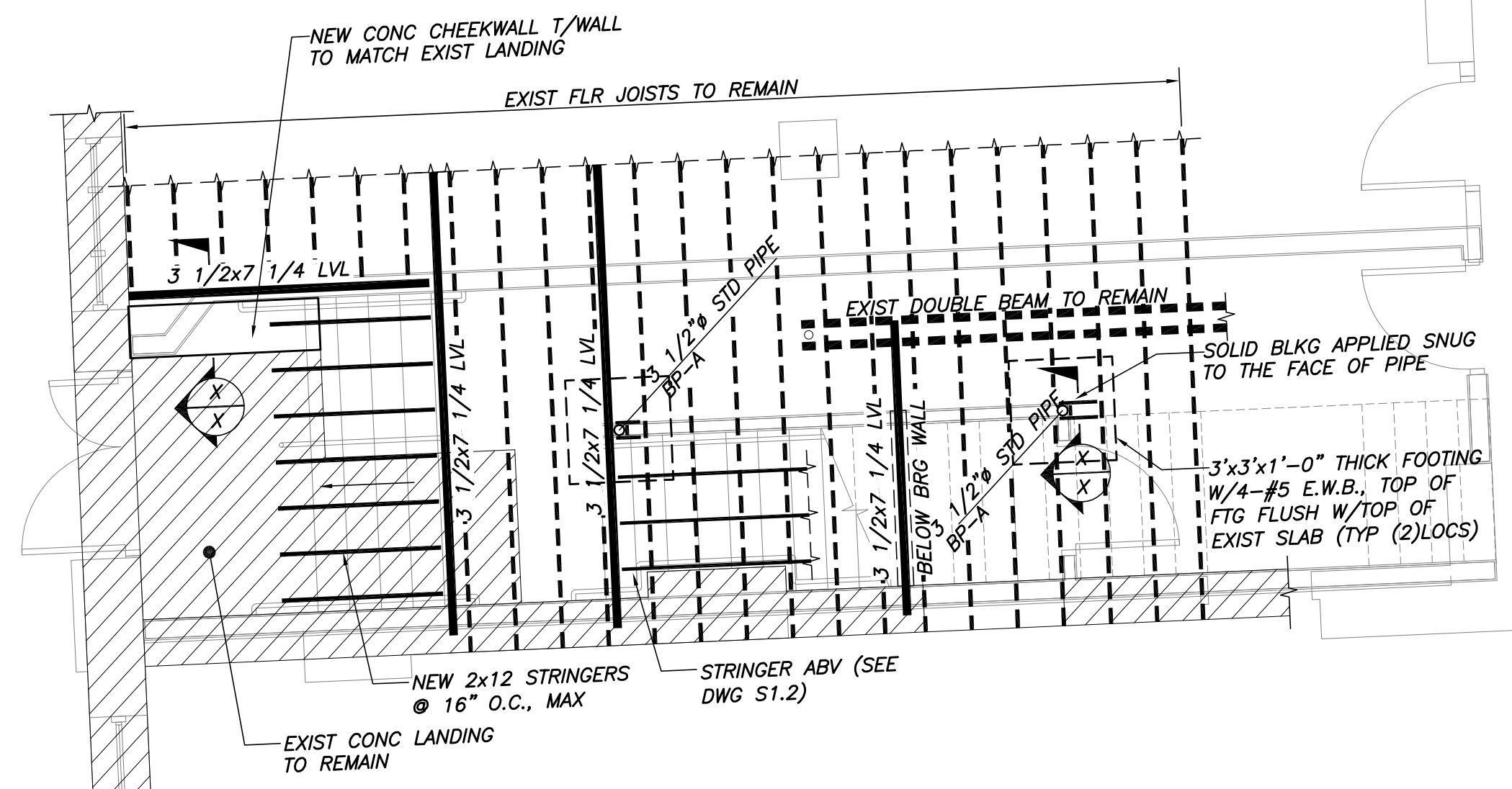
STAIR TWO SECOND FLOOR FRAMING PART PLAN
1/4"=1'-0"

- NOTES:
- INDICATES SPAN ORIENTATION OF EXISTING CONC SLAB. G.C. SHALL VERIFY SLAB THICKNESS IN FIELD.
 - INDICATES 1.5C20 FORM DECK METAL DECKING W/CONC FILL. COORDINATE FILL SUCH THAT T/SLAB EL MATCHES EXIST T/SLAB EL. PROVIDE 6x6-W2.1xW2.1 W.W.F. REINF.

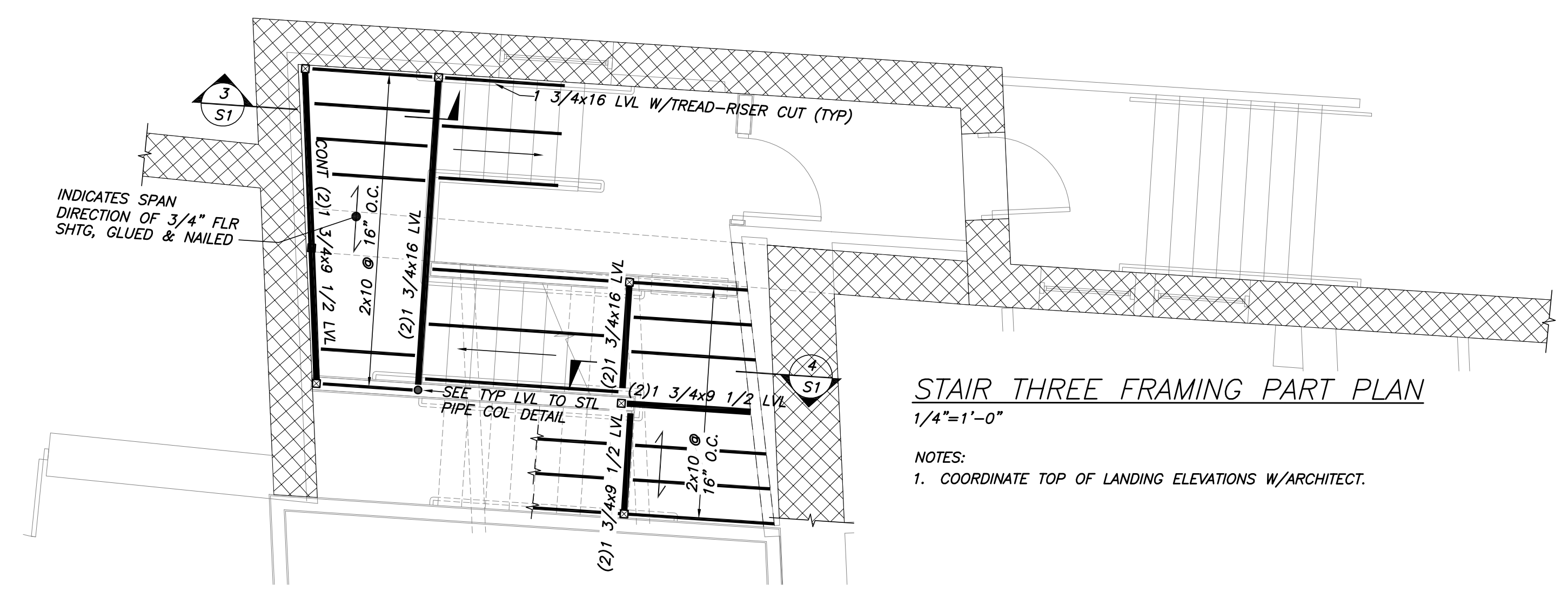


STAIR THREE SECOND FLOOR FRAMING PART PLAN
1/4"=1'-0"

- NOTES:
- INDICATES APPROXIMATE SPAN ORIENTATION OF EXISTING CONC SLAB. G.C. SHALL VERIFY SLAB THICKNESS IN FIELD.

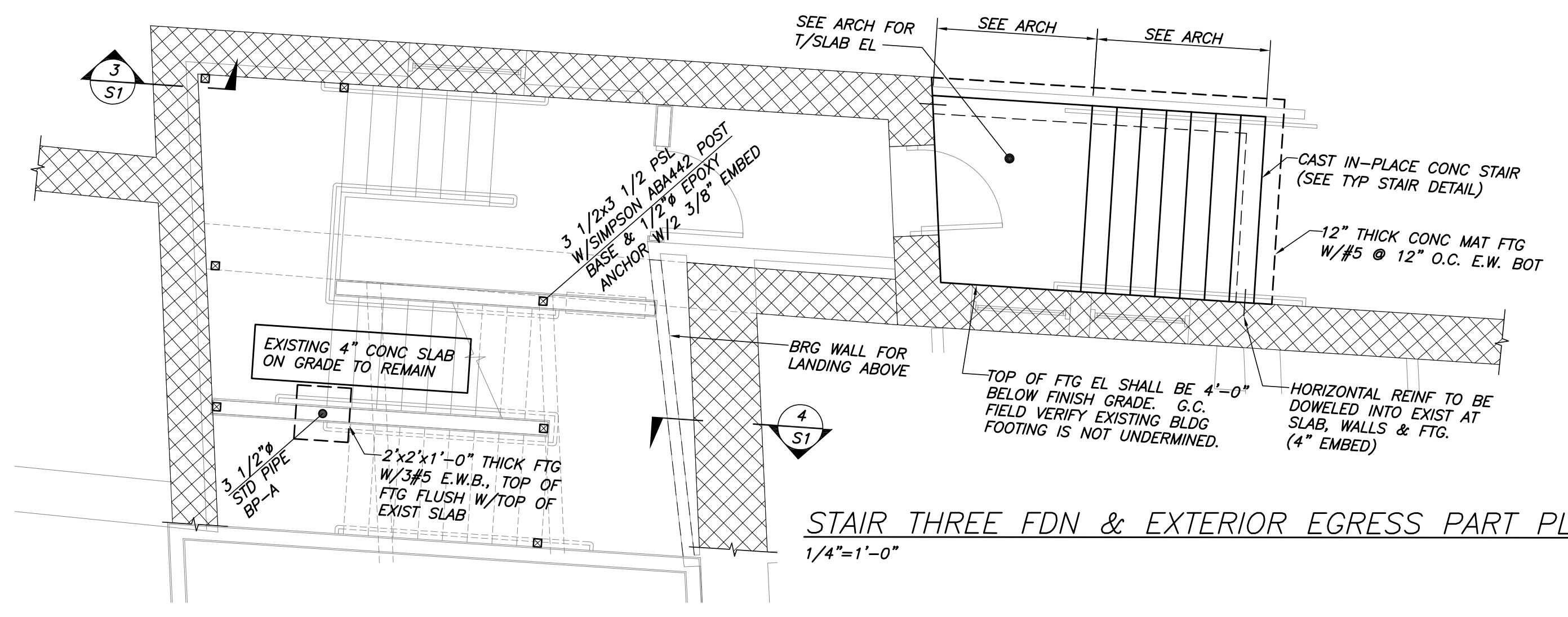


STAIR TWO FDN & FIRST FLR FRMG PART PLAN
1/4"=1'-0"

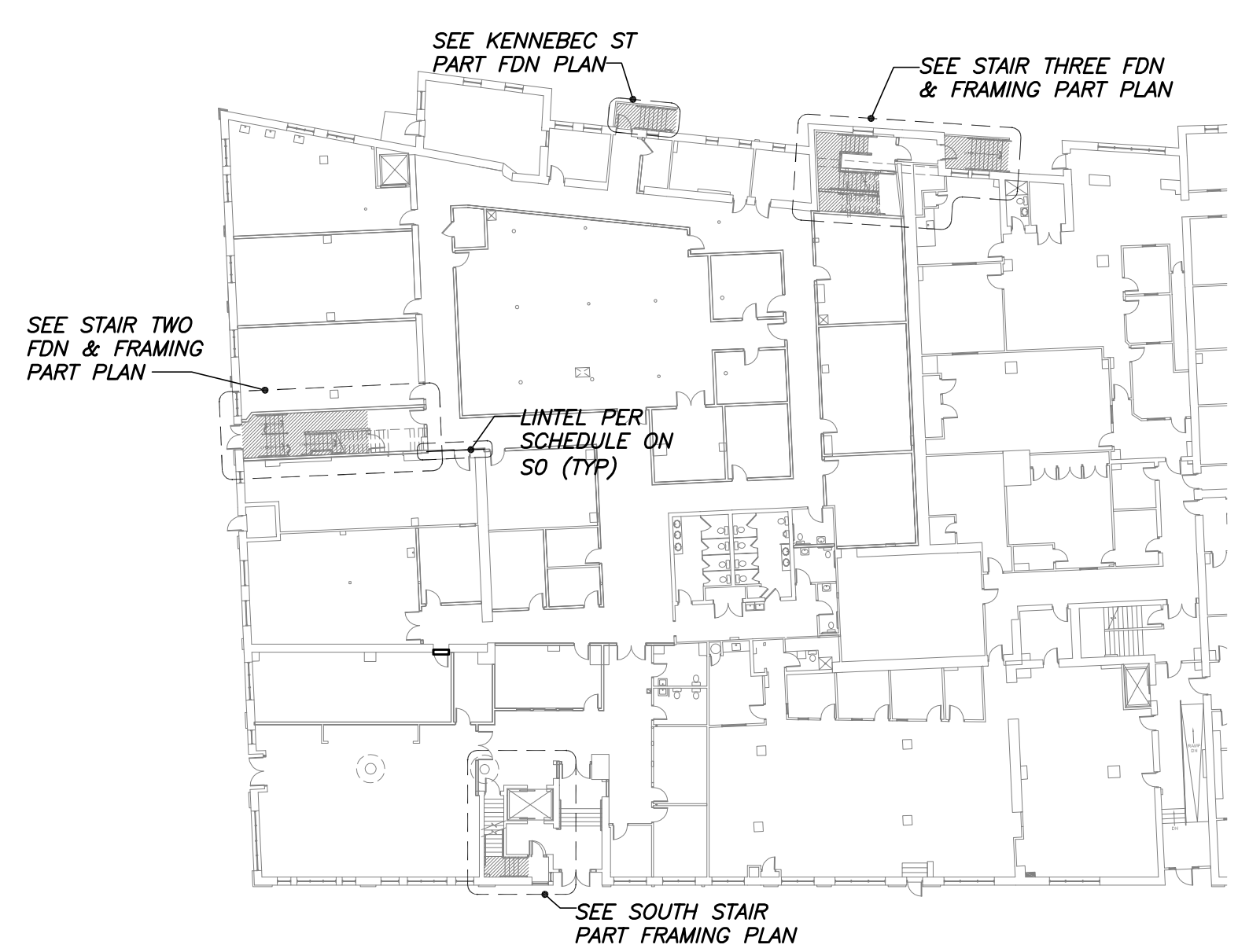


STAIR THREE FRAMING PART PLAN
1/4"=1'-0"

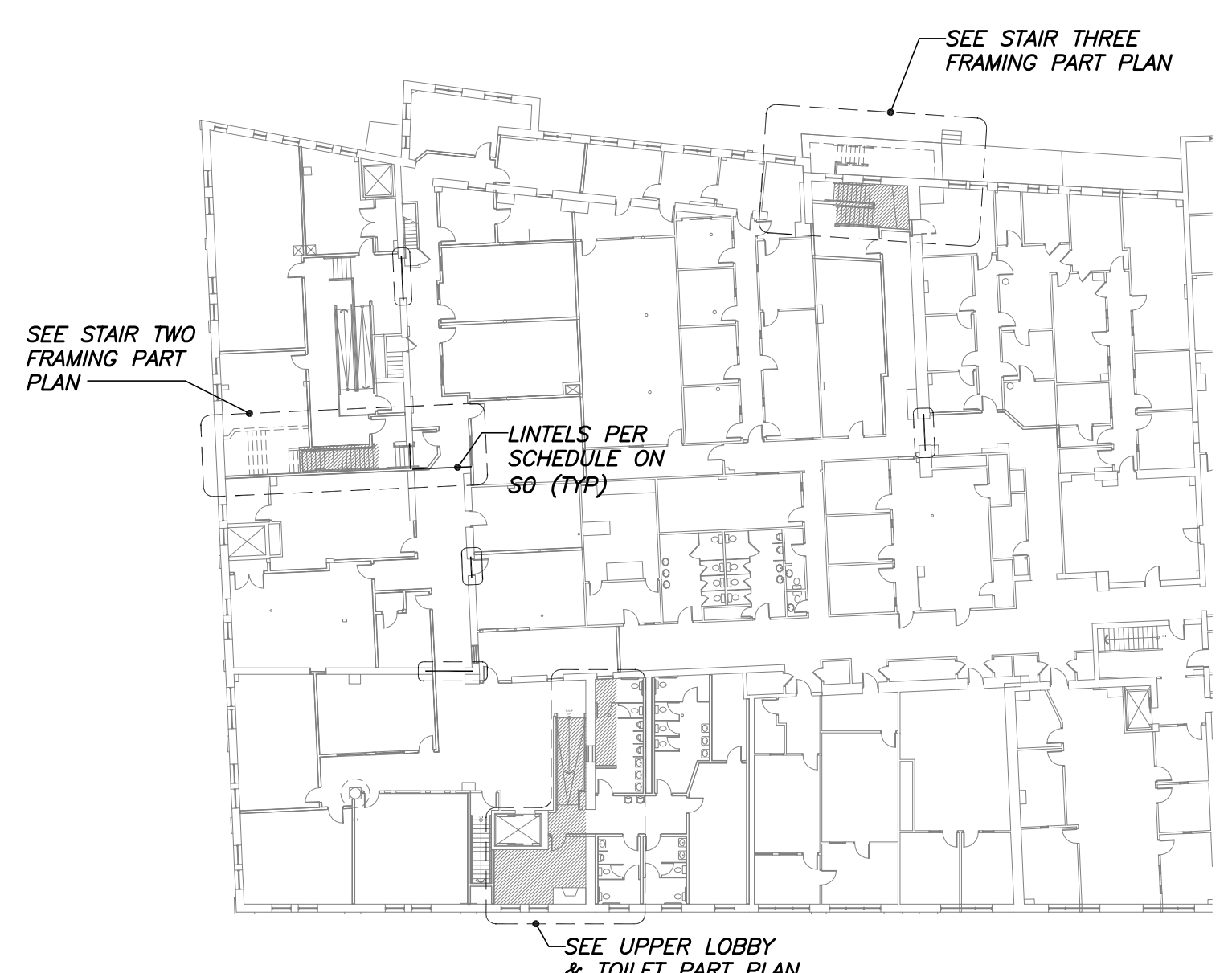
- NOTES:
- COORDINATE TOP OF LANDING ELEVATIONS W/ARCHITECT.



STAIR THREE FDN & EXTERIOR EGRESS PART PLAN
1/4"=1'-0"



LEVEL ONE KEY PLAN



LEVEL TWO KEY PLAN

BAXTER ACADEMY
INTERIOR FIT-UP
185 LANCASTER STREET, PORTLAND, MAINE



RYAN SENATORE ARCHITECTURE
565 CONGRESS STREET
PORTLAND, MAINE 04101
207-650-6414
senatorearchitecture.com

CONSULTANTS:



REVISIONS:

DATE: 27 JANUARY 2017
PROJECT No. 3970
DRAWN BY: MSK
CHECKED BY: NRM
SCALE: AS NOTED

SHEET TITLE:
FOUNDATION AND FLOOR FRAMING PART PLANS

S1