

© 2017 RYAN SENATORE ARCHITECTURE

BAXTER ACADEMY
 INTERIOR FIT-UP
 185 LANCASTER STREET, PORTLAND, MAINE



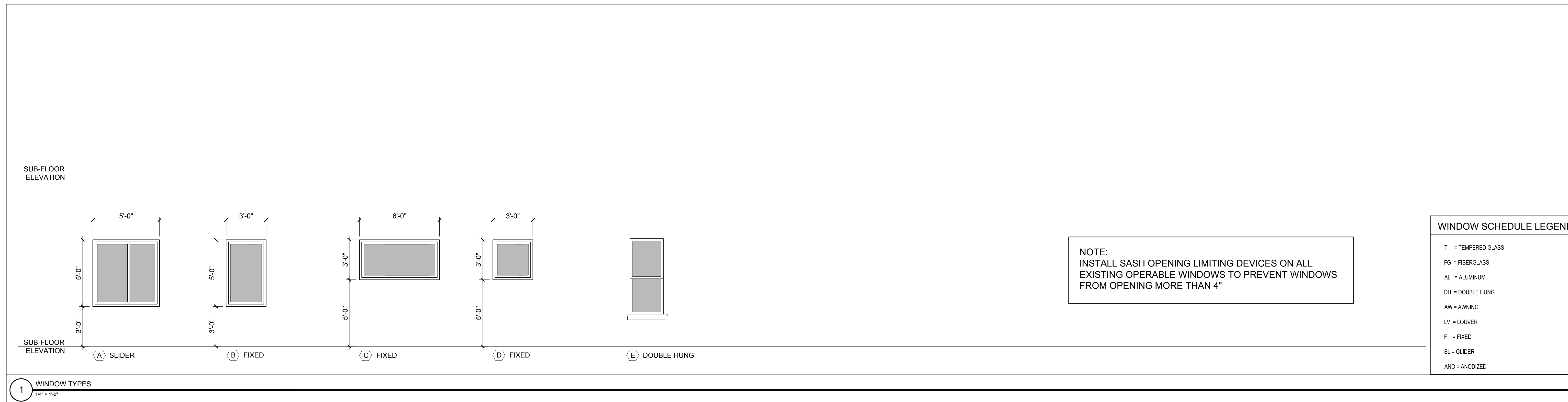
CONSULTANTS:

REVISIONS:

DATE: 31 JANUARY 2017
 PROJECT No. 1648
 DRAWN BY: RRT, RJS
 CHECKED BY: RJS
 SCALE: AS NOTED

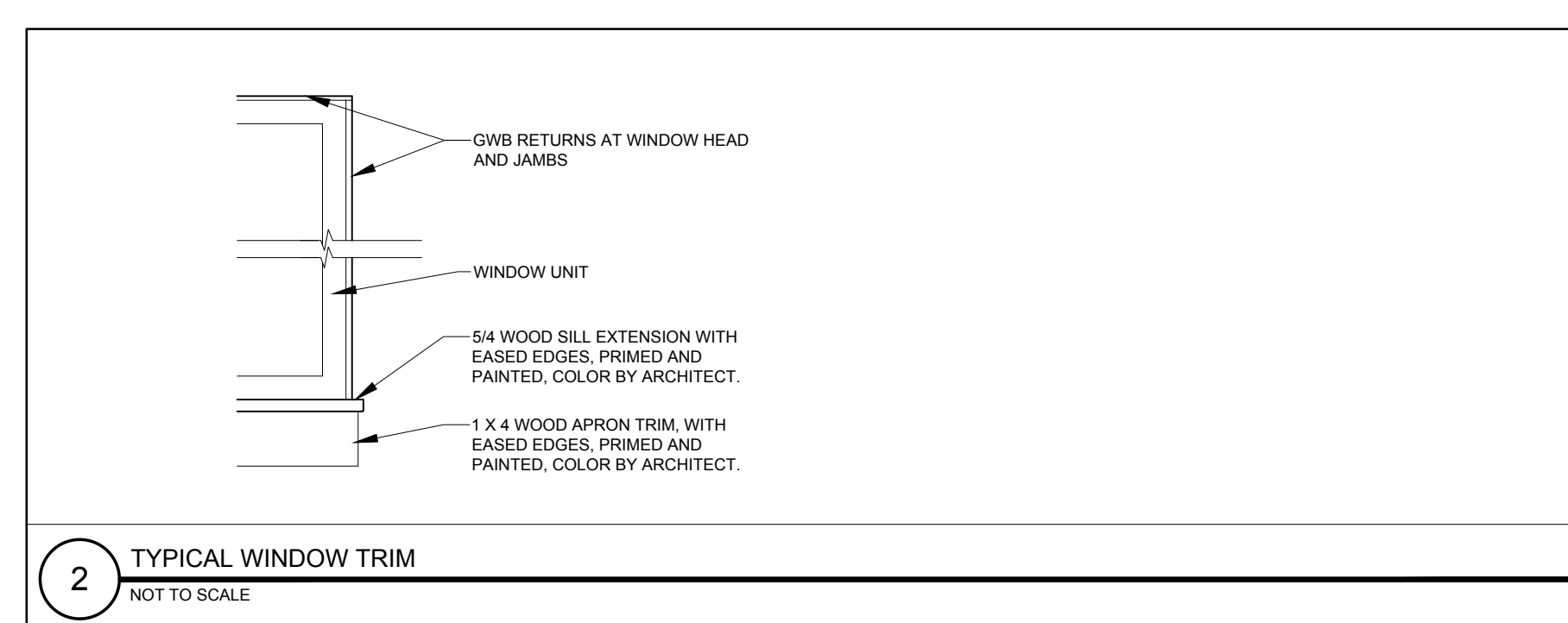
SHEET TITLE:
 WINDOW SCHEDULE

A7-1



1 WINDOW TYPES
 1/4" = 1'-0"

WINDOW SCHEDULE										
KEY	ACTION	ROUGH OPENING (WH) VIF *	HEIGHT FROM SUB-FLOOR	HEAD	JAMB	SILL	DETAILS		REMARKS	FINISH
							MATERIAL	FINISH		
A	SL	5'-1" X 3'-0-1/2"					PTD	PTD	SMOKE SEALED SLIDER WINDOW, BY FYRE-TEC SERIES 900 OR APPROVED EQUAL.	
B	F	3'-1" X 3'-0-1/2"					STL	PTD	SMOKE SEALED WINDOW AND FRAME	
C	F	6'-1" X 3'-0-1/2"					STL	PTD	SMOKE SEALED WINDOW AND FRAME	
D	F	3'-1" X 3'-0-1/2"					STL	PTD	SMOKE SEALED WINDOW AND FRAME	
E	DH	EX - EX					AL	ANO	REPLACE EXISTING WINDOWS TO MATCH TYPICAL EXISTING EXTERIOR WINDOW, PROVIDE THERMALLY BROKEN FRAMES, INSULATED GLAZING UNITS WITH ARGON FILL AND LOW-E COATING, PROVIDE 4" SASH OPENING LIMITER	



- WINDOW NOTES:
- COORDINATE AND ADJUST ROUGH OPENING DIMENSIONS TO ACCOMMODATE SILL PAN FLASHING SYSTEM
 - ALL WINDOW UNITS AND MULTI-WINDOW UNIT COMBINATIONS TO MEET OR EXCEED DP-35 RATINGS FOR BOTH STRUCTURAL AND WATER
 - FULL SCREENS ALL OPENINGS
 - ALL GLAZING LOCATED WITHIN 18" OF FINISHED FLOOR TO BE TEMPERED GLASS
 - ALL EXTERIOR GLAZING TO BE INSULATED
 - FRAME ALL OPENINGS WITH ELEVATIONS
 - SEAL WINDOW TO ROUGH OPENING WITH LOW EXPANDING FOAMINSULATION - SEE DETAILS
 - PROVIDE BLINDS AT ALL EXTERIOR WINDOWS