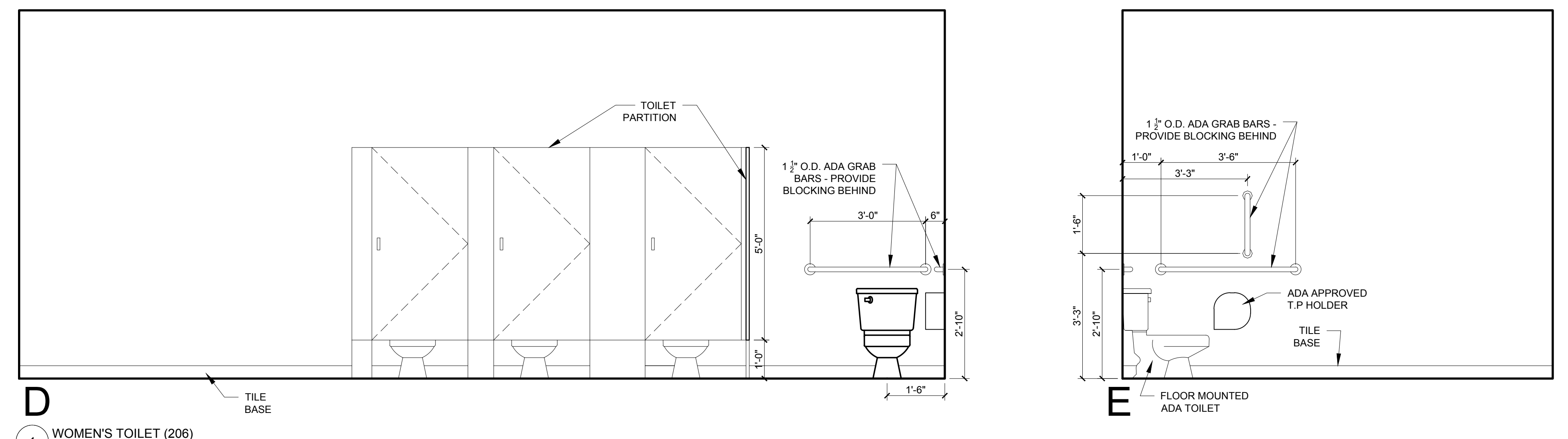
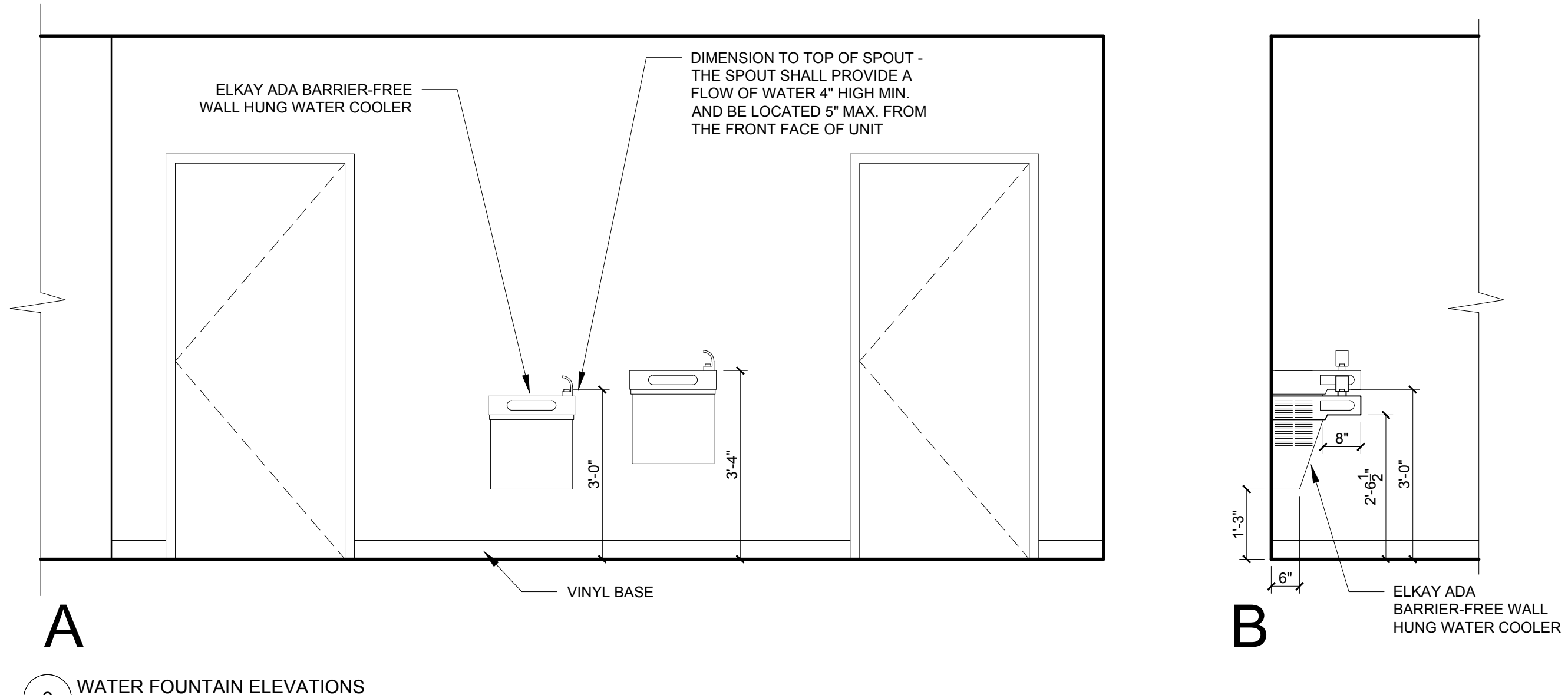


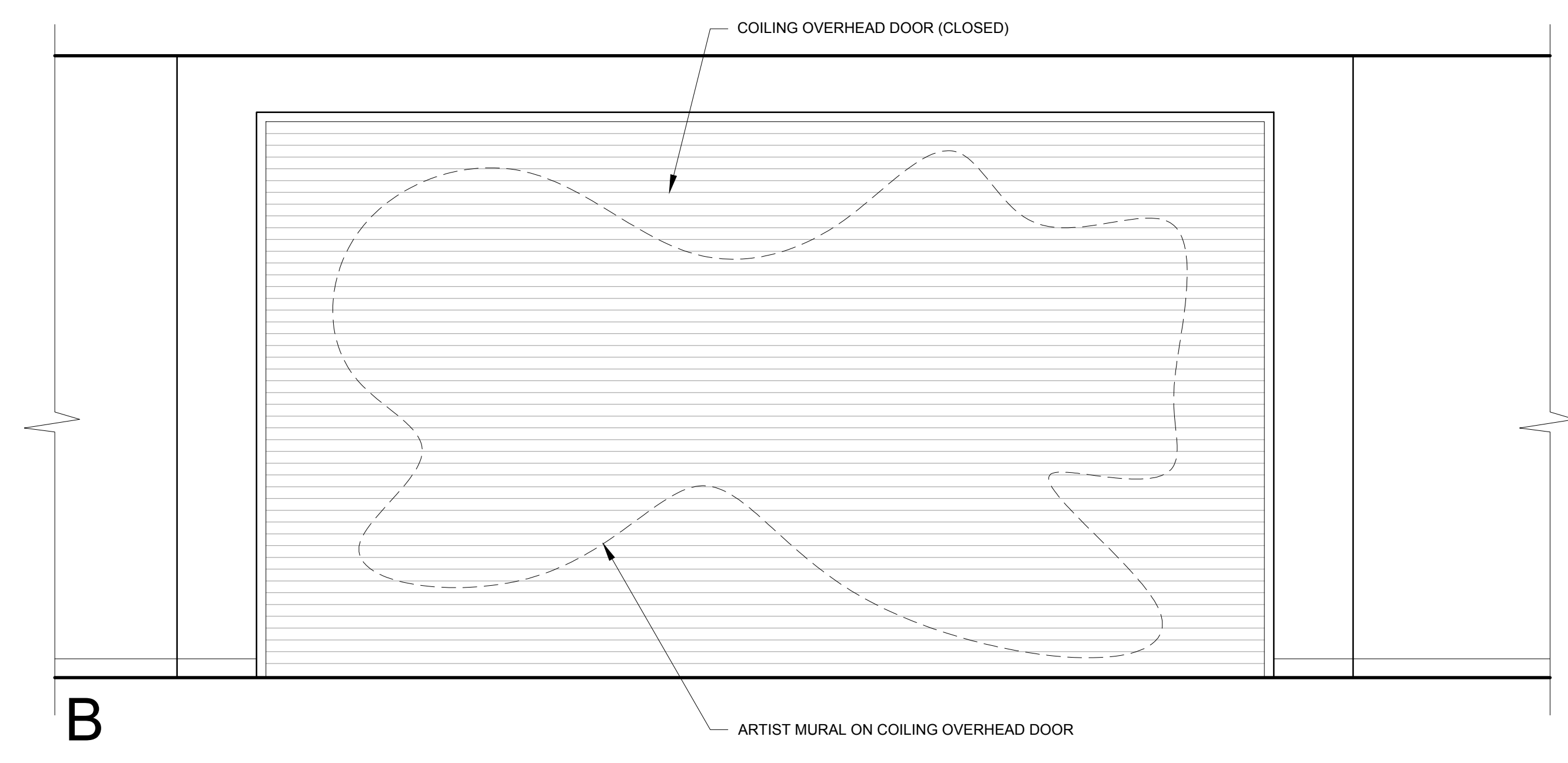
1 WOMEN'S TOILET (206)
 1/2" = 1'-0"



1 WOMEN'S TOILET (206)
 1/2" = 1'-0"



2 WATER FOUNTAIN ELEVATIONS
 1/2" = 1'-0"



3 ELEVATION AT CLOSED COILING OVERHEAD DOOR
 1/2" = 1'-0"

- UNIT NOTES**
- 1) G.C. TO CONFIRM AND COORDINATE ALL ROUGH FRAMING DIMENSIONS FOR BUILT-IN FIXTURES ETC. G.C. TO CONFIRM AND COORDINATE ALL CABINERY AND APPLIANCE DIMENSIONS
 - 2) PROVIDE APPROPRIATE BLOCKING IN WALLS BEHIND ALL FIXTURES, PARTITIONS AND ACCESSORIES. BLOCKING FOR GRAB BARS TO BE PROVIDED IN WALLS OF BATHROOMS
 - 3) PROVIDE MOISTURE RESISTANT GWB AT ALL WALLS AND CEILINGS IN BATHROOMS TYPICAL
 - 4) REFER TO ELECTRICAL AND MECHANICAL DRAWINGS FOR ADDITIONAL INFORMATION REGARDING LIGHTING, DIFFUSERS, ETC.
 - 5) PROVIDE FIRE EXTINGUISHER ON BRACKET IN BASE CABINET BELOW SINK - TYPICAL (ONE SINK PER ROOM)
 - 6) WHERE DROPPED SOFFITS AND CEILINGS ARE SHOWN, THESE ARE IN ADDITION TO THE FIRE RATED GWB CEILING ABOVE WHICH IS PART OF THE RATED ASSEMBLY
 - 7) WHERE PLUMBING VALVES ARE LOCATED IN FIRE RATED WALLS, PROVIDE FIRE RATED BOX IN WALL FOR VALVE TO BE INSTALLED WITHIN

CABINERY AND APPLIANCE ABBREVIATIONS

DB	= DRAWER BASE
DRB	= DOOR BASE
SB	= SINK BASE
WC	= WALL CABINET
DW	= DISHWASHER
REF	= REFRIGERATOR