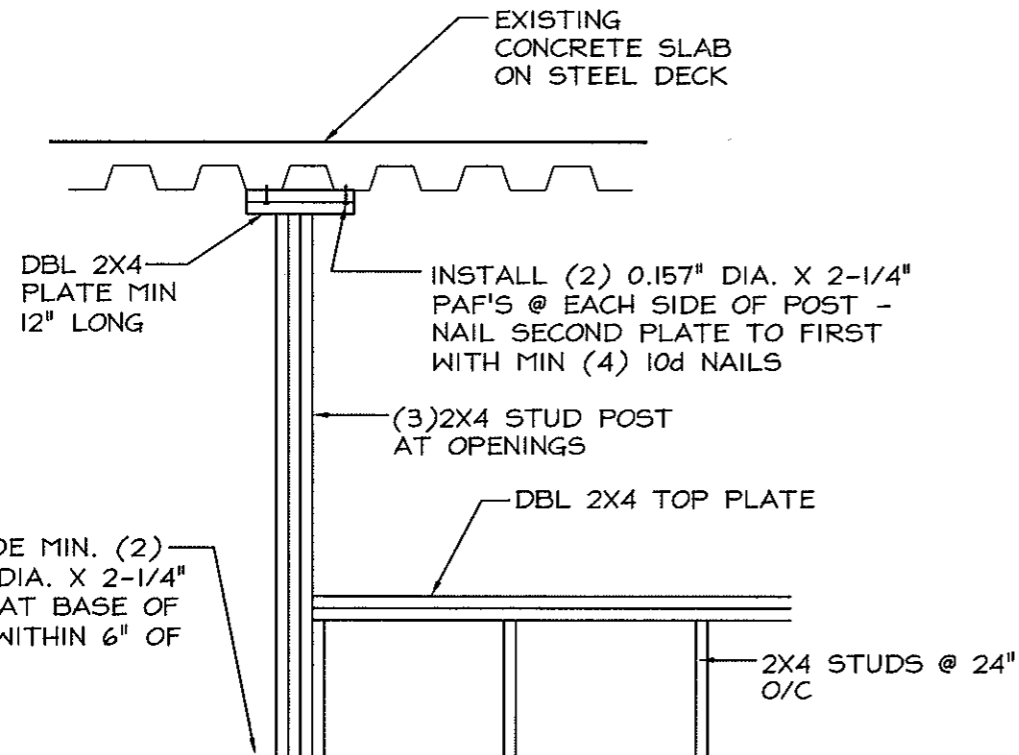
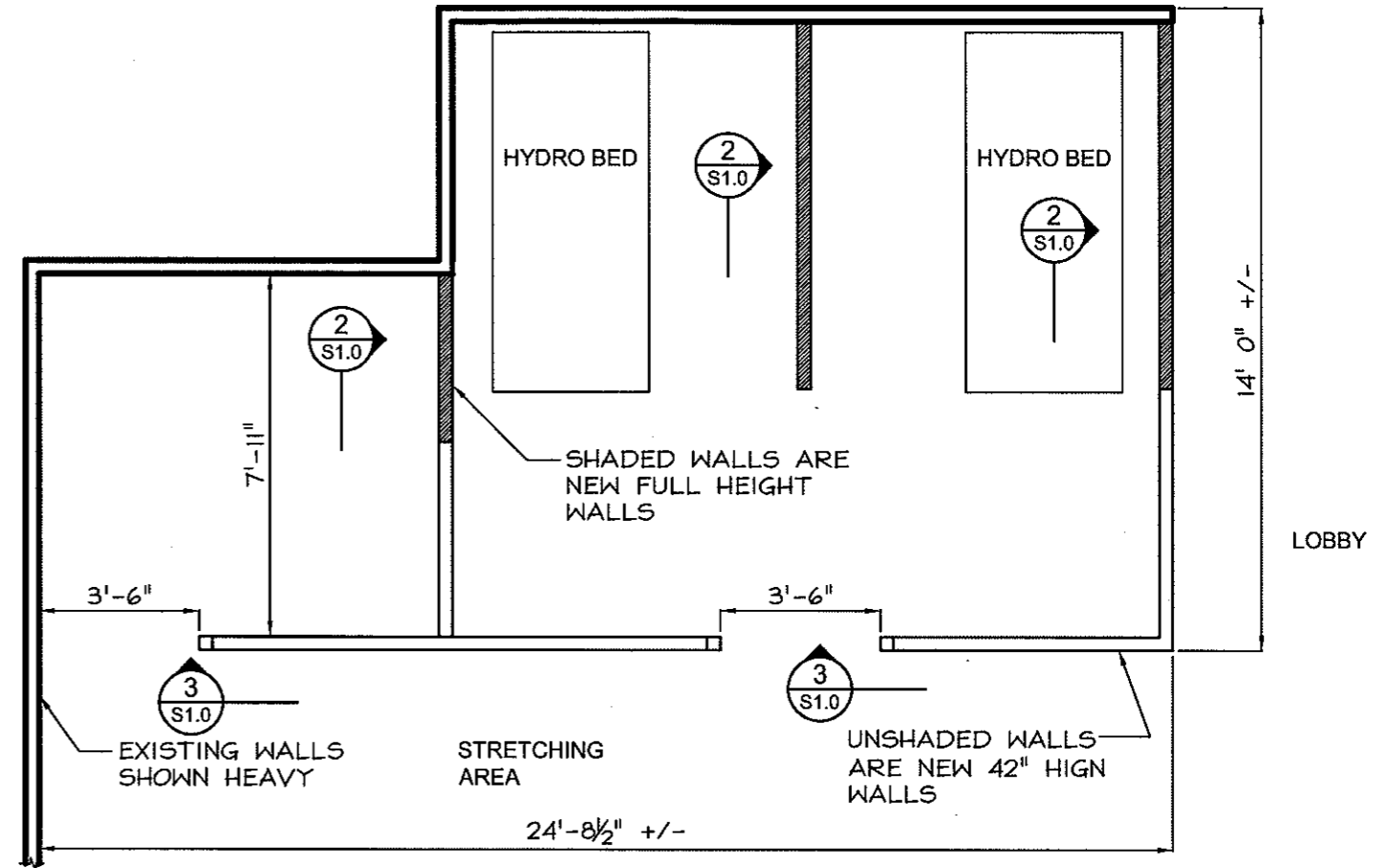


NOTE - FASTEN BASE OF WALLS TO CONCRETE SLAB WITH 0.157" DIA. X 2-1/4" PAF'S @ 24" O/C (MAX)

2 WALL FASTENING DETAILS
S1.0 Scale: 1/2" = 1'-0"



3 END POST FASTENING DETAILS
S1.0 Scale: 1/2" = 1'-0"



1 PARTIAL FLOOR PLAN AT NEW PARTITIONS
S1.0 Scale: 1/4" = 1'-0"

NOTE - ALL DIMENSIONS ARE APPROXIMATE AND MUST BE VERIFIED IN FIELD BY CONTRACTOR

STATE OF MAINE
JEFFREY S. NAWROCKI
No. 6044
LICENSED PROFESSIONAL ENGINEER
11/29/13

JSN
Associates, Inc.
Consulting Structural Engineers
One Autumn Street
Portsmouth, NH 03801
Phone: (603) 433-8639
Fax: (603) 431-2811
www.jsneng.com

Planet Fitness Interior
Partitions
145 Marginal Way
Portland, ME

Date: 11/29/13
Scale: As Noted
Project No: 131112
S-1.0