

LEGEND:

● B-6 SOIL BORING LOCATION

SOURCE:  
 FIGURE ADAPTED FROM SITE PLAN PREPARED BY MITCHELL & ASSOCIATES,  
 ENTHR FTN "SPRINKLING DRAINAGE & UTILITIES PLAN (SE-1)", DATED 06/01/01.

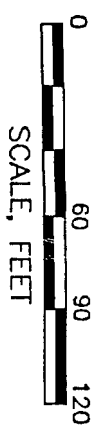


FIGURE 2  
 EXPLORATION LOCATION PLAN  
 135 MARGINAL WAY  
 PORTLAND, MAINE

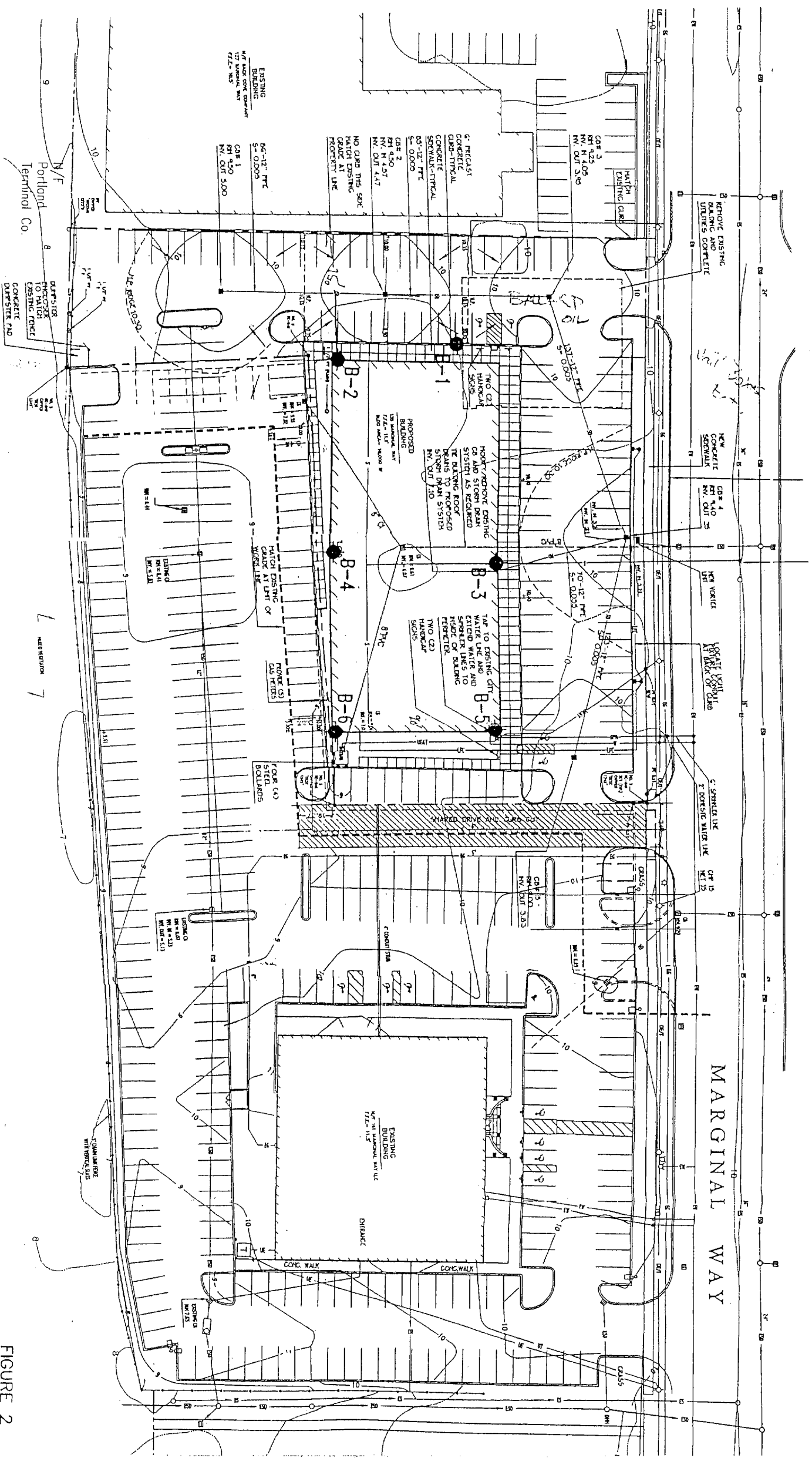
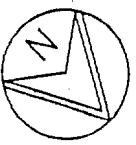
AUGUST 2001

PROJECT NO. 816-04



**R.W. Gillespie & Associates, Inc.**  
 CONSULTING GEOTECHNICAL & ENVIRONMENTAL SPECIALISTS

55 Industrial Park Rd., Suite 4  
 Scarborough, Maine 04072 (207) 286-9008  
 Fax: (207) 286-2882 E-mail: rwy@rwspecialists.com



LEGEND:

**B-6** SOIL BORING LOCATION

SOURCE:  
 FIGURE ADAPTED FROM SITE PLAN PREPARED BY MITCHELL & ASSOCIATES,  
 ENTITLED "GRADING, DRAINAGE & UTILITIES PLAN (SE-1)", DATED 06/01/01.



FIGURE 2  
 EXPLORATION LOCATION PLAN  
 135 MARGINAL WAY  
 PORTLAND, MAINE

AUGUST 2001

PROJECT NO. 816-04



**R.W. Gillespie & Associates, Inc.**  
 CONSULTING GEOTECHNICAL & ENVIRONMENTAL SPECIALISTS

80 Industrial Park Rd., Suite 4 Seco, Maine 04072 (207) 286-9008  
 Fax: (207) 280-2802 E-mail: rwg@rwgassociates.com