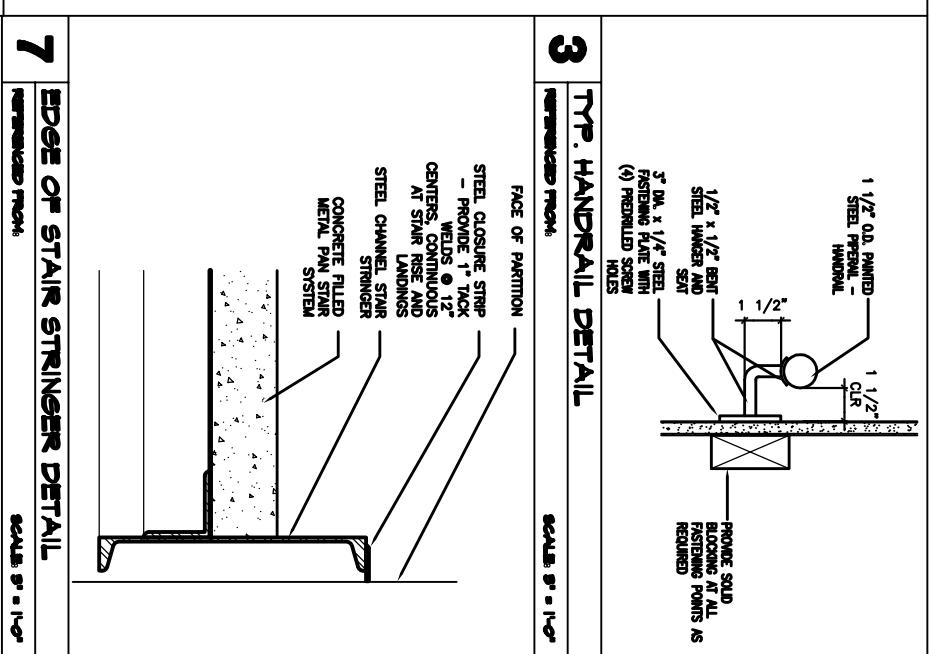
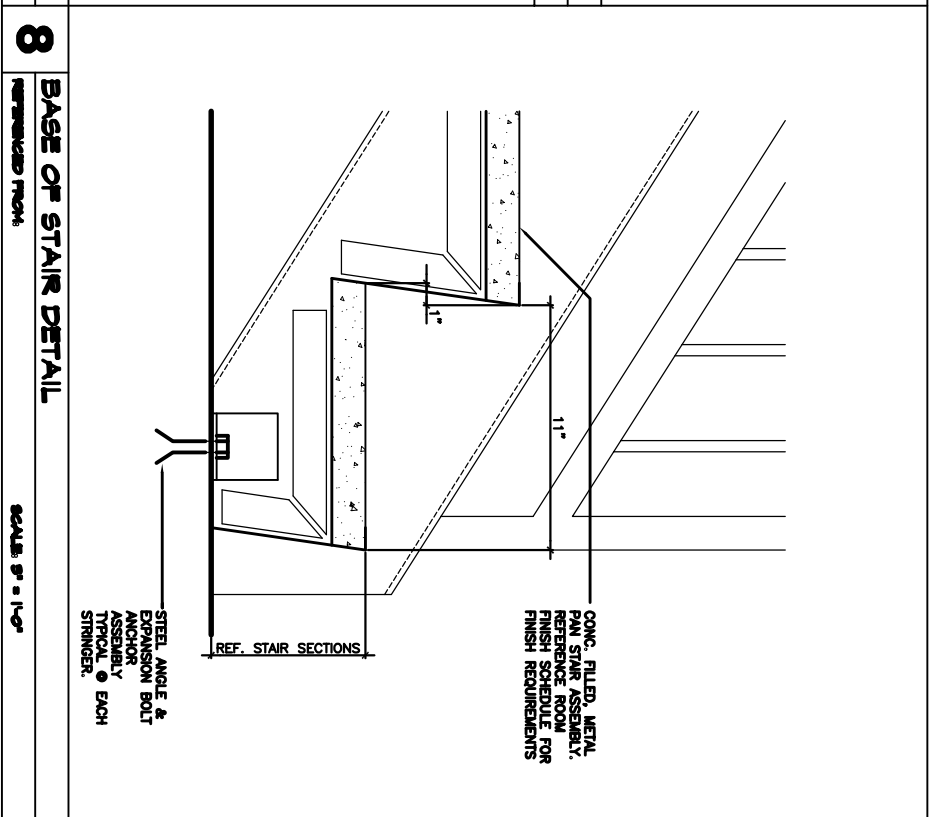


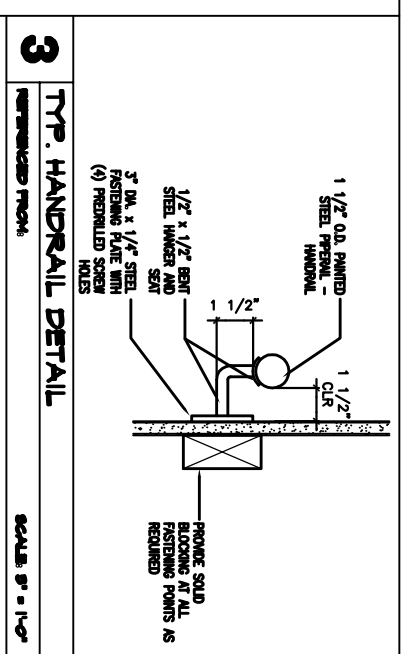
4 STAIR NO. 1 SECOND FLOOR STAIR PLAN
 REFERENCED FROM:
 SCALE 8/8" = 1'-0"



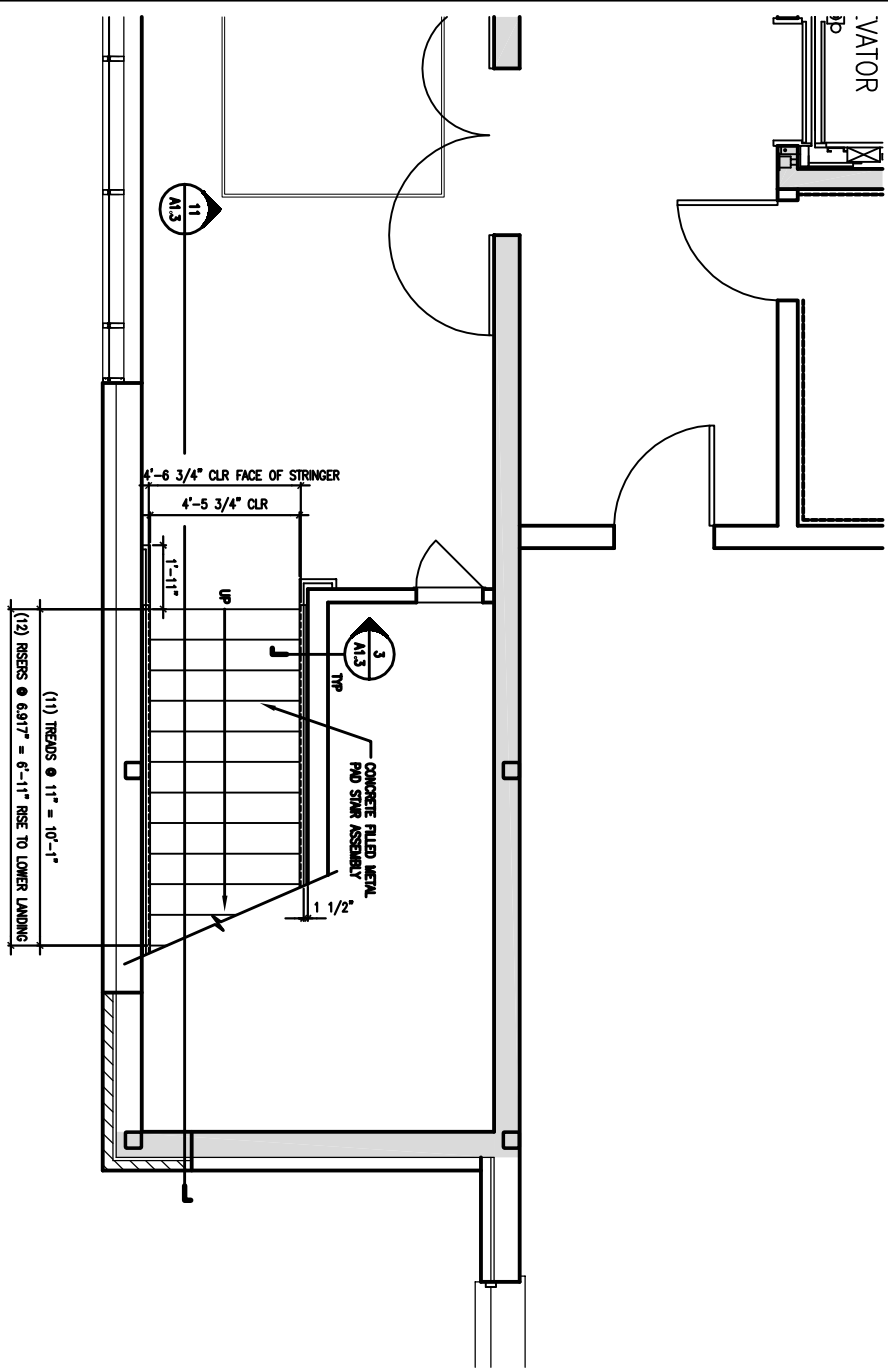
7 EDGE OF STAIR STRINGER DETAIL
 REFERENCED FROM:
 SCALE 8/8" = 1'-0"



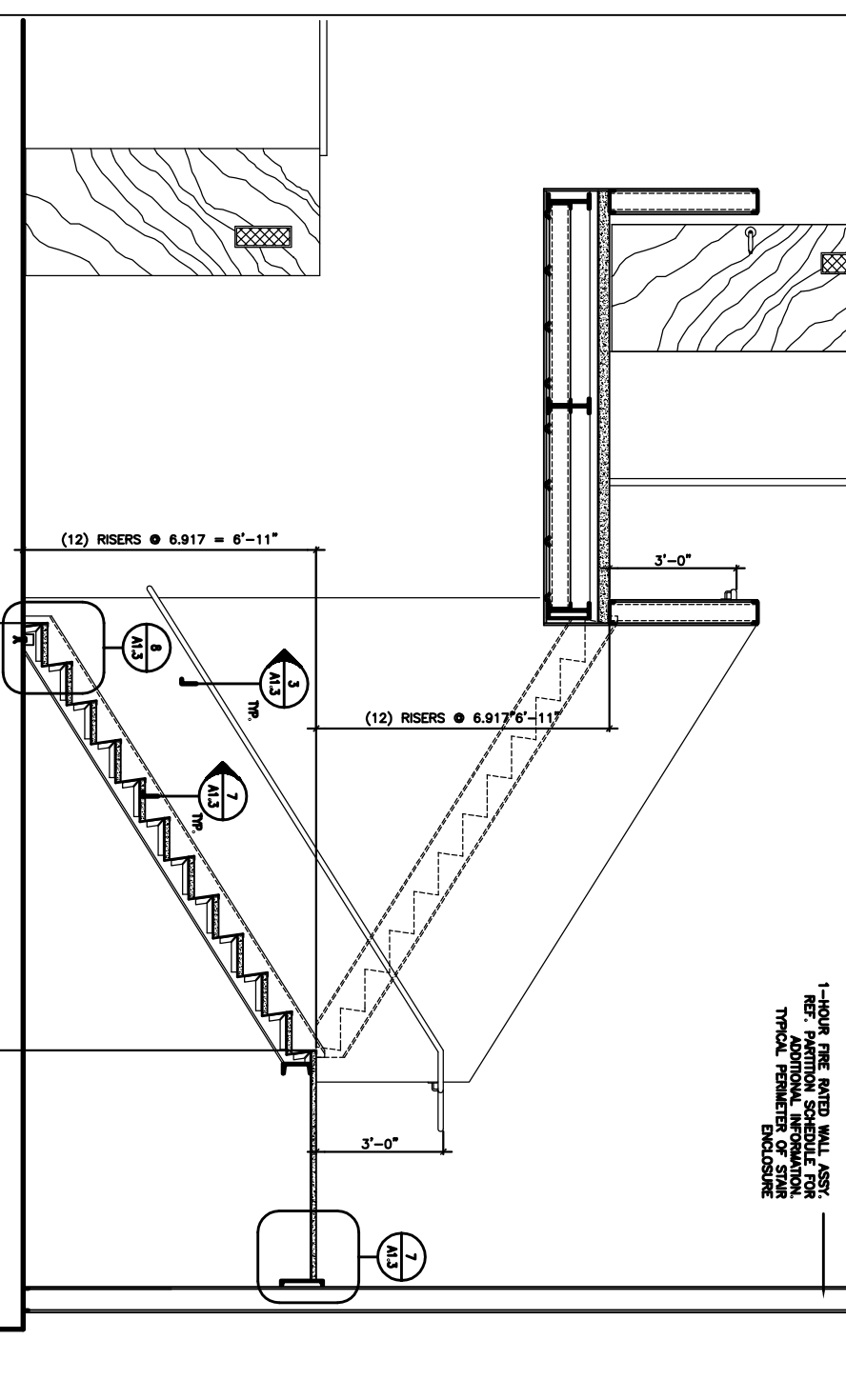
8 BASE OF STAIR DETAIL
 REFERENCED FROM:
 SCALE 8/8" = 1'-0"



3 TYP. HANDRAIL DETAIL
 REFERENCED FROM:
 SCALE 8/8" = 1'-0"



9 STAIR NO. 1 FIRST FLOOR STAIR PLAN
 REFERENCED FROM:
 SCALE 8/8" = 1'-0"



11 STAIR SECTION
 REFERENCED FROM:
 SCALE 1/2" = 1'-0"



454 Cumberland Avenue
 Portland, ME 04101
 Phone: (207) 774-4441
 Fax: (207) 774-4006
 www.CWSarch.com

MULTI-TENANT OFFICE BUILDING
 155 MARGINAL WAY
 PORTLAND, MAINE
 04101

FIVE LIVER COMPANY
 5 MILK STREET
 PORTLAND, MAINE
 04112
 207-772-6404

| REVISIONS | |
|-------------|------|
| Description | Date |
| | |
| | |
| | |

Drawing Title:
STAIR NO. 1 ENLARGED STAIR PLANS & SECTION
 Drawing Number:
A1.3
 Scale: AS NOTED
 Date: Progress 6/21/04
 CWS Proj. No.: 04425.ilc

A1.3

ISSUED FOR PERMITTING