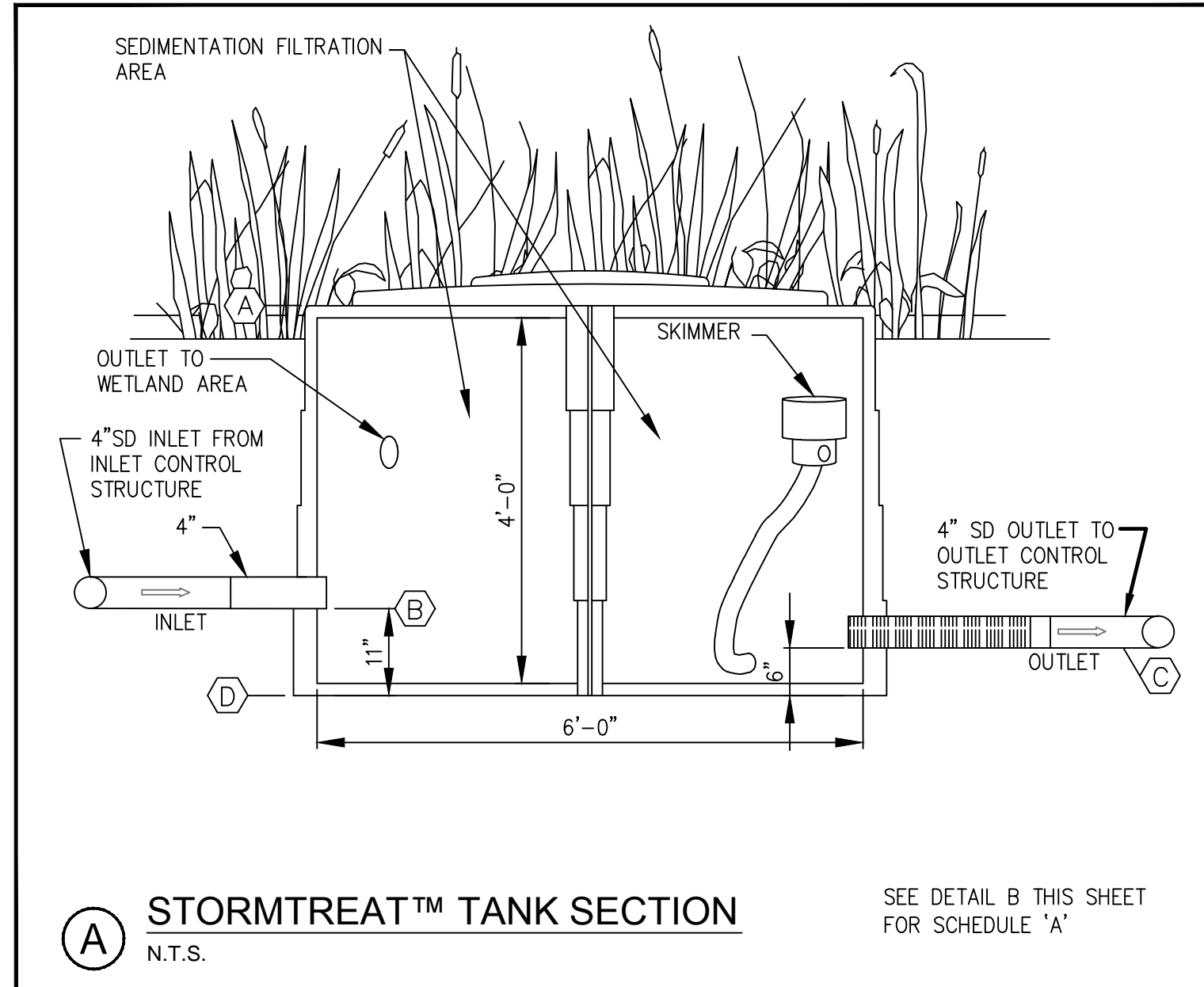
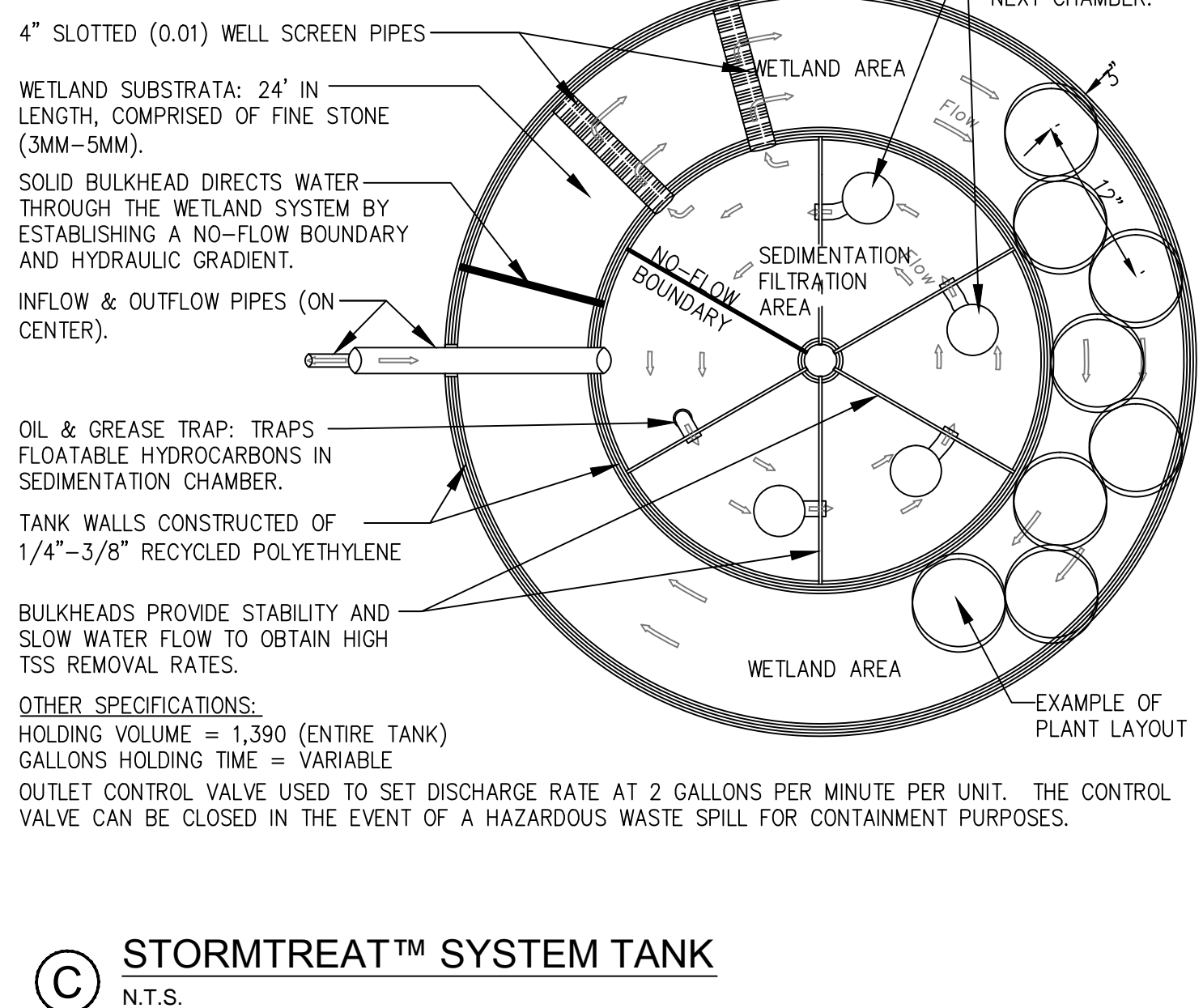
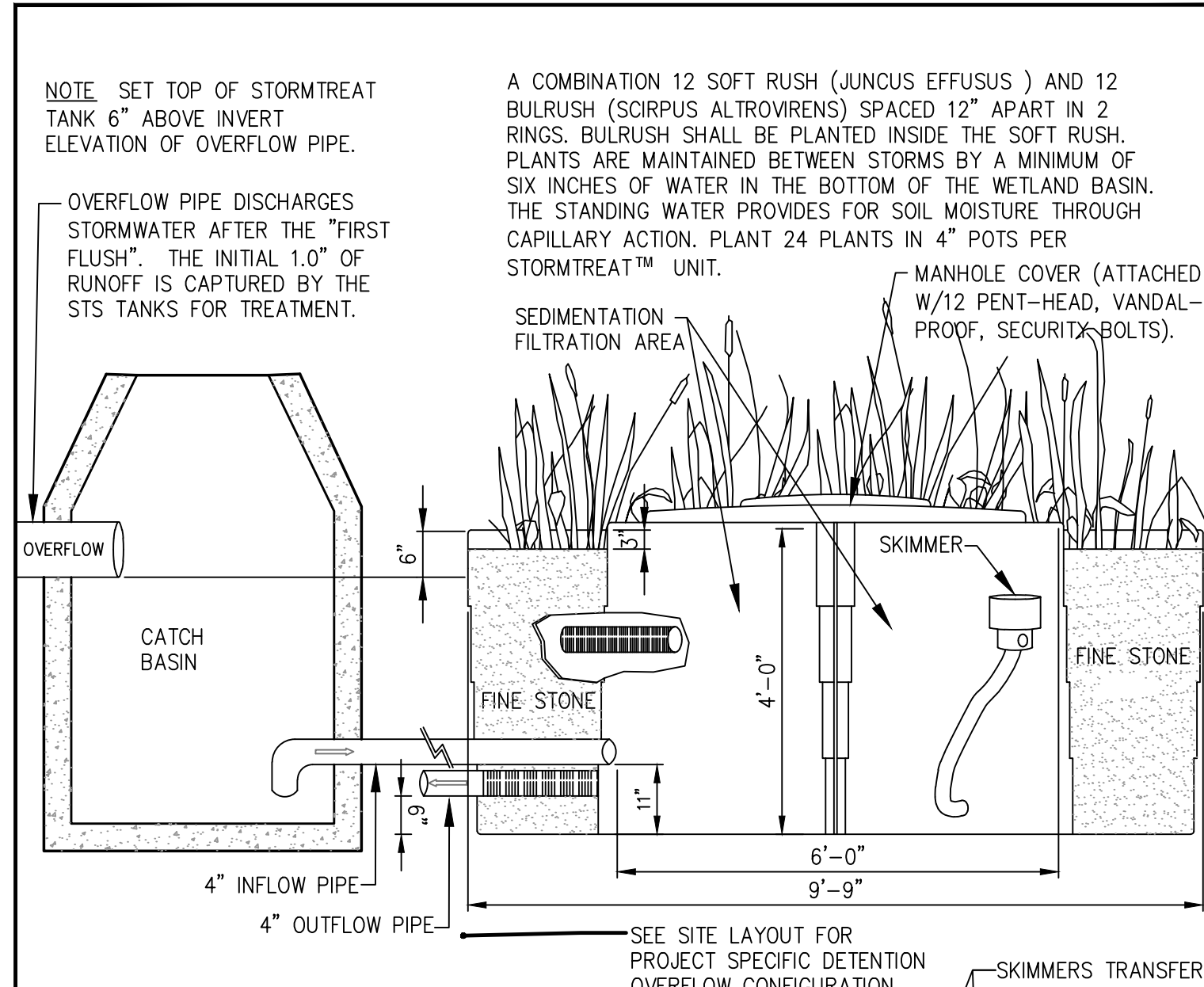


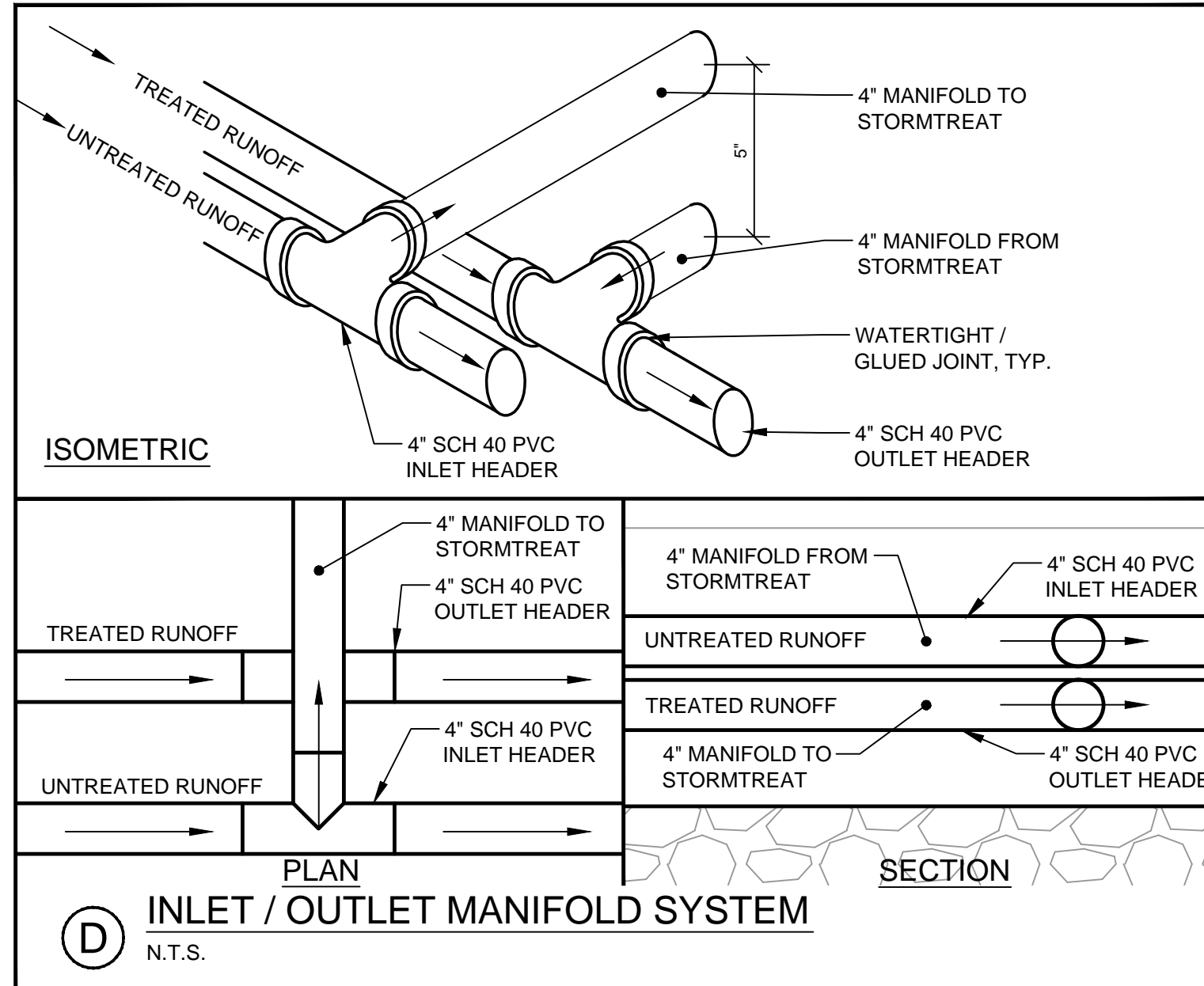
SECTION - ILLUSTRATIVE ONLY



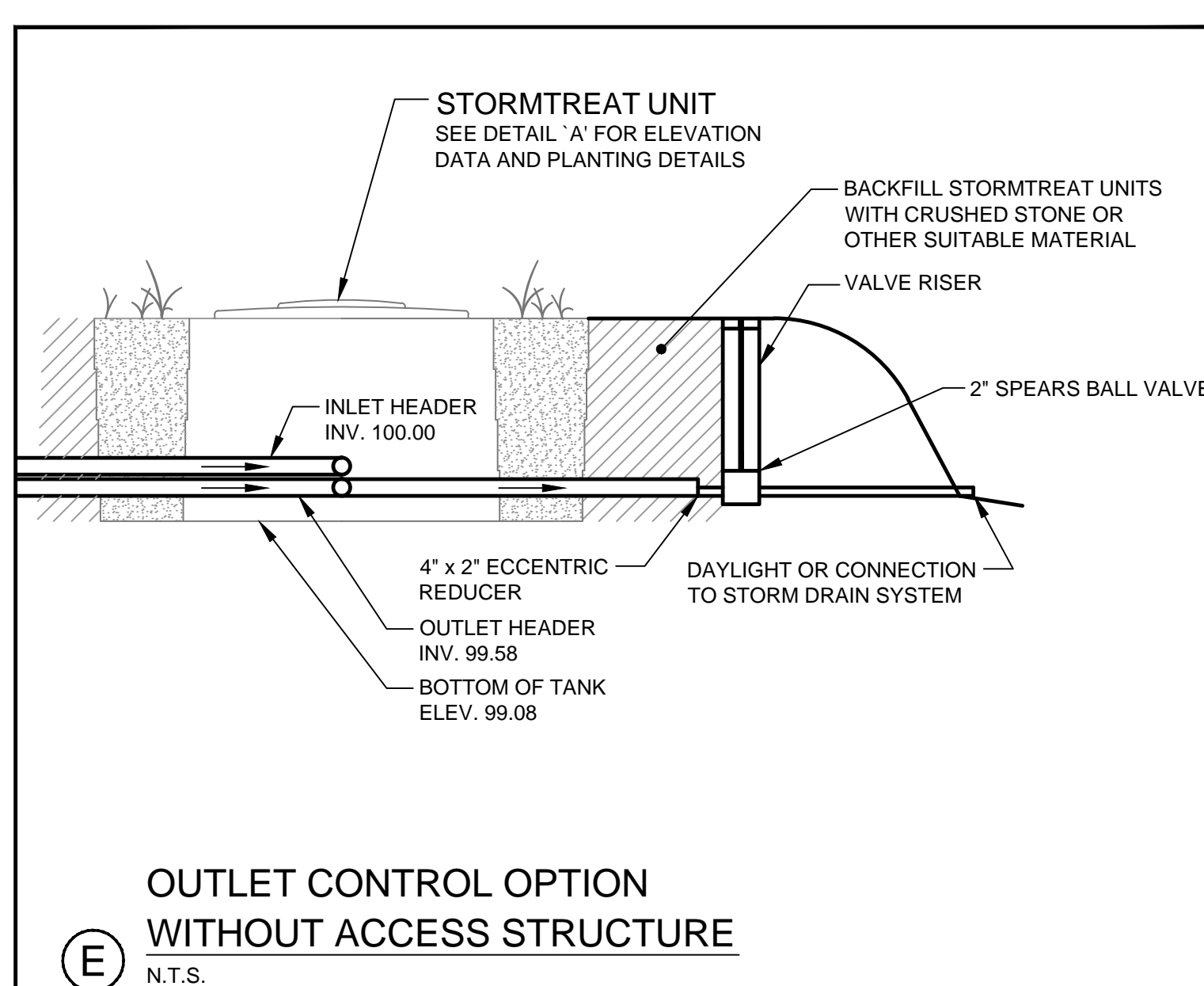
A STORMTREAT™ TANK SECTION
N.T.S. SEE DETAIL B THIS SHEET FOR SCHEDULE 'A'



C STORMTREAT™ SYSTEM TANK
N.T.S.



D INLET / OUTLET MANIFOLD SYSTEM
N.T.S.

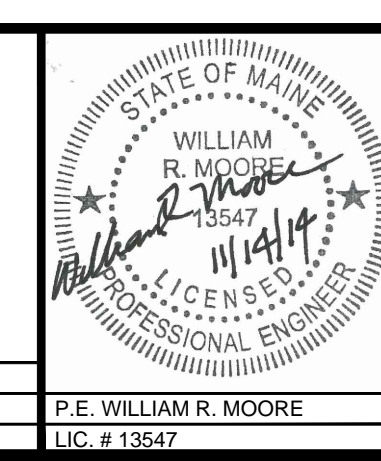


E OUTLET CONTROL OPTION WITHOUT ACCESS STRUCTURE
N.T.S.

- NOTES:**
- PROJECT NOTES:**
- THIS DRAWING DEPICTS "TYPICAL" DETAILS FOR THE STORMTREAT™ UNITS DEVELOPED BY Fay, Spofford & Thorndike UNDER CONTRACT THE STORMTREAT™ SYSTEMS. THE MIDTOWN PROJECT REQUIRES 2 STORMTREAT™ UNITS (TWO FOR MIDTOWNFOUR). REFER TO GRADING AND DRAINAGE PLANS FOR ELEVATIONS. ARCHED DETENTION IS AN ALTERNATE TO THE BRENTWOOD CHAMBERS. SUBJECT TO OTHER PORTIONS OF THE PROJECT MANUAL.
- DESIGN PARAMETERS:**
- CONTRIBUTING AREA = REFER TO STORMWATER MANAGEMENT PLAN FOR THIS PROJECT.
 - DESIGN STORM = ONE INCH.
 - TOTAL WATER QUALITY VOLUME (WQV) = REFER TO STORMWATER MANAGEMENT REPORT FOR THIS PROJECT.
 - RELEASE RATE = 2 GPM PER STORMTREAT TANK.
- GENERAL NOTES:**
- ENTIRE SYSTEM FROM INLET STRUCTURE TO OUTLET STRUCTURE SHOULD BE WATERTIGHT, UNLESS DETENTION SYSTEM IS CONFIGURED FOR INFILTRATION.
 - CONFIGURATION SHOWN DOES PROVIDE SOME EXTENDED DETENTION FOR FLOW CONTROL FOR MAJOR STORM EVENTS.
 - PRETREATMENT MEASURES SHOULD BE UTILIZED PRIOR TO ENTERING DETENTION CHAMBERS.
 - UTILIZATION OF DIFFERENT PLANT SPECIES SHOULD BE VERIFIED WITH STORMTREAT SYSTEMS FOR REMOVAL EFFICIENCIES.
 - SEE STORMTREAT SPECIFICATIONS FOR INSTALLATION GUIDELINES AND REQUIREMENTS.
 - STORMTREAT UNITS SHOULD BE PROTECTED FROM TURBID RUNOFF DURING CONSTRUCTION.
 - "FINE STONE" TO MEET THE REQUIREMENTS OF THE STORMTREAT SPECIFICATION.
 - ALL ECCENTRIC REDUCERS TO BE WATERTIGHT.
 - ALL SCH 40 PVC TO BE WATERTIGHT, ALL JOINTS SHALL BE GLUED.
 - SEE SPECIFICATION FOR MAINTENANCE REQUIREMENTS.
 - ENGINEER TO SELECT APPROPRIATE SYSTEM LINER IF CHAMBERS ARE TO BE UTILIZED FOR DETENTION.

PRELIMINARY - NOT FOR CONSTRUCTION

REV	DATE	DESCRIPTION	REVISIONS
1	11.14.14	FINAL LEVEL III SUBMISSION TO CITY OF PORTLAND	



PROJECT	midtown PORTLAND, MAINE
SHEET TITLE	STORMWATER DETAILS STORMTREAT™ SYSTEMS
CLIENT	THE FEDERATED COMPANIES

FAY, SPOFFORD & THORNDIKE ENGINEERS • PLANNERS • SCIENTISTS 778 MAIN ST., SUITE 8, SOUTH PORTLAND, ME 04106 FORMERLY DELUCA-HOFFMAN ASSOCIATES	DRAWN: CMW DESIGNED: WGH/BEK CHECKED: WGH/SRB FILE NAME: 3062-DETAIL SHEETS SHEET: C-7.7	DATE: OCTOBER 2014 SCALE: AS NOTED JOB NO.: SP-M037B
--	--	--