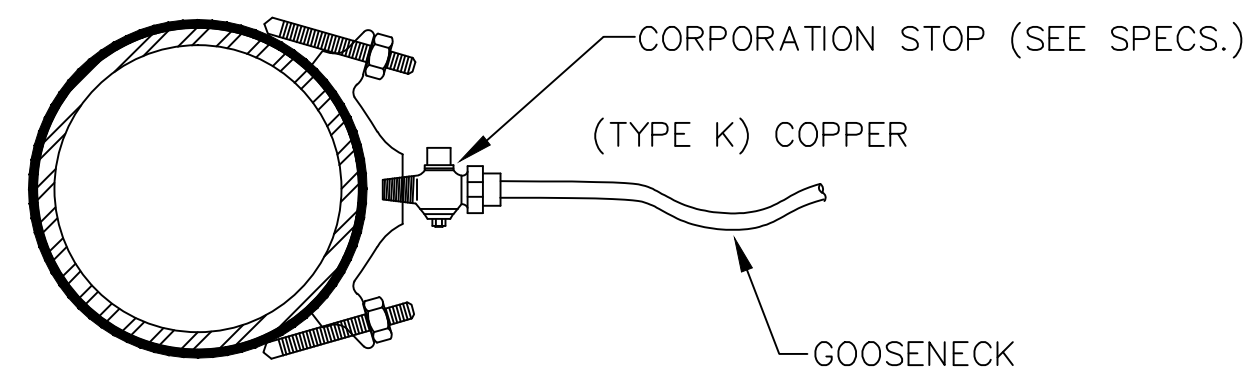


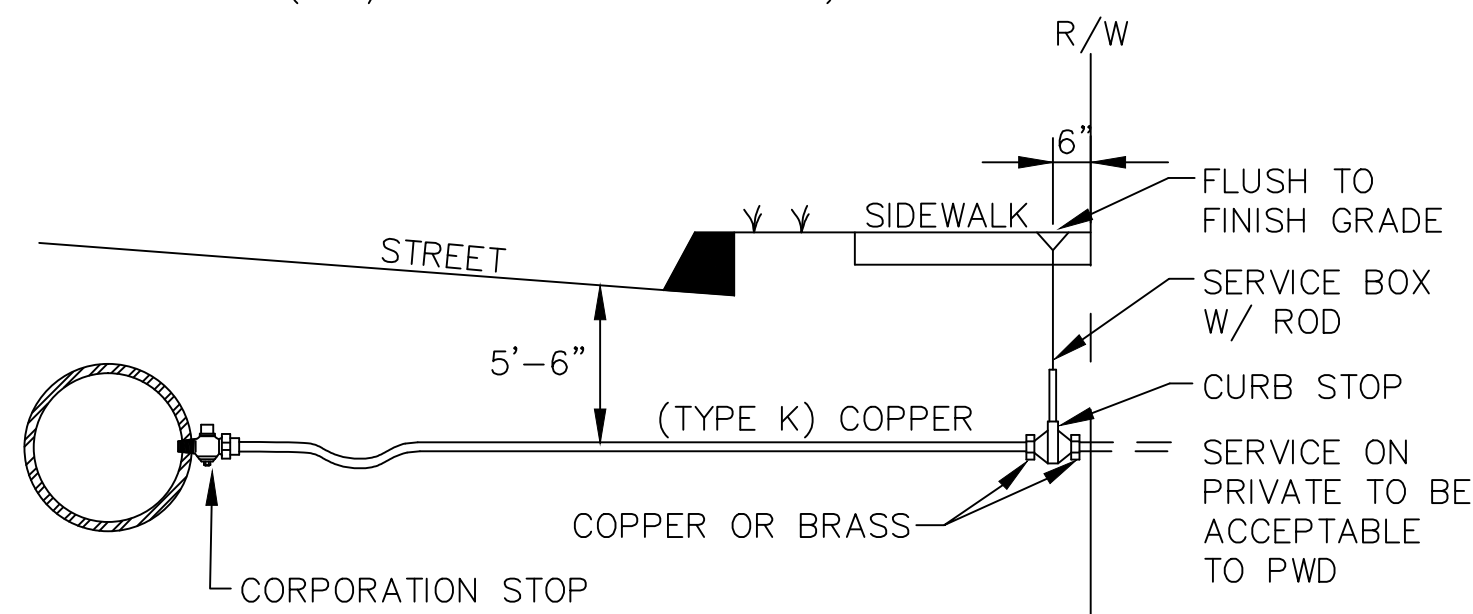
SERVICE TAP

(3/4" AND 1" C.C. THREAD)



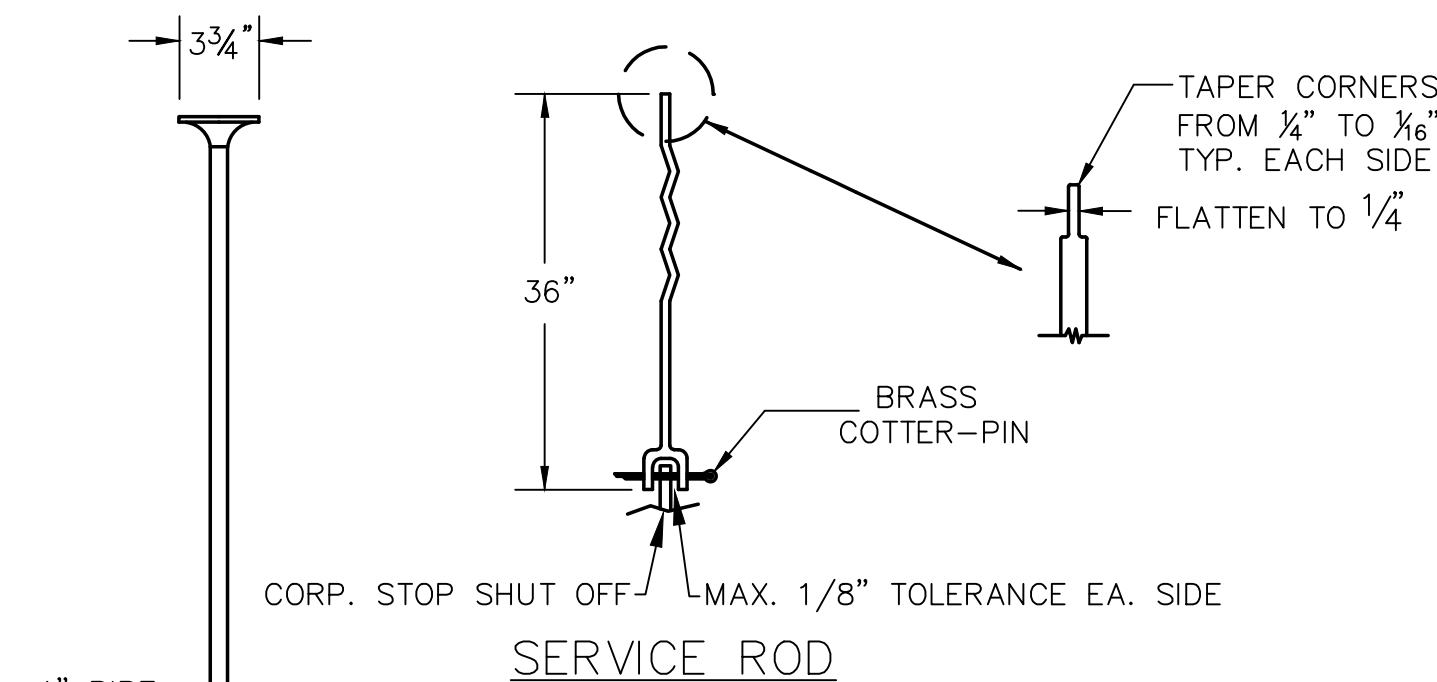
SERVICE SADDLE

(1-1/2" AND 2" C.C. THREAD)



TYPICAL SERVICE CONNECTION

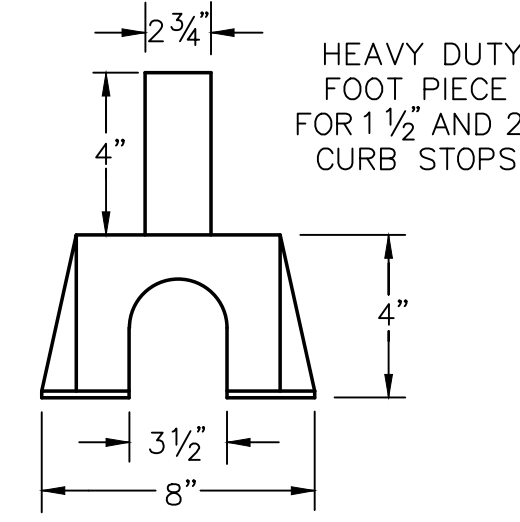
A TYPICAL SADDLE AND SERVICE CONNECTION
N.T.S.



SERVICE ROD



COVER



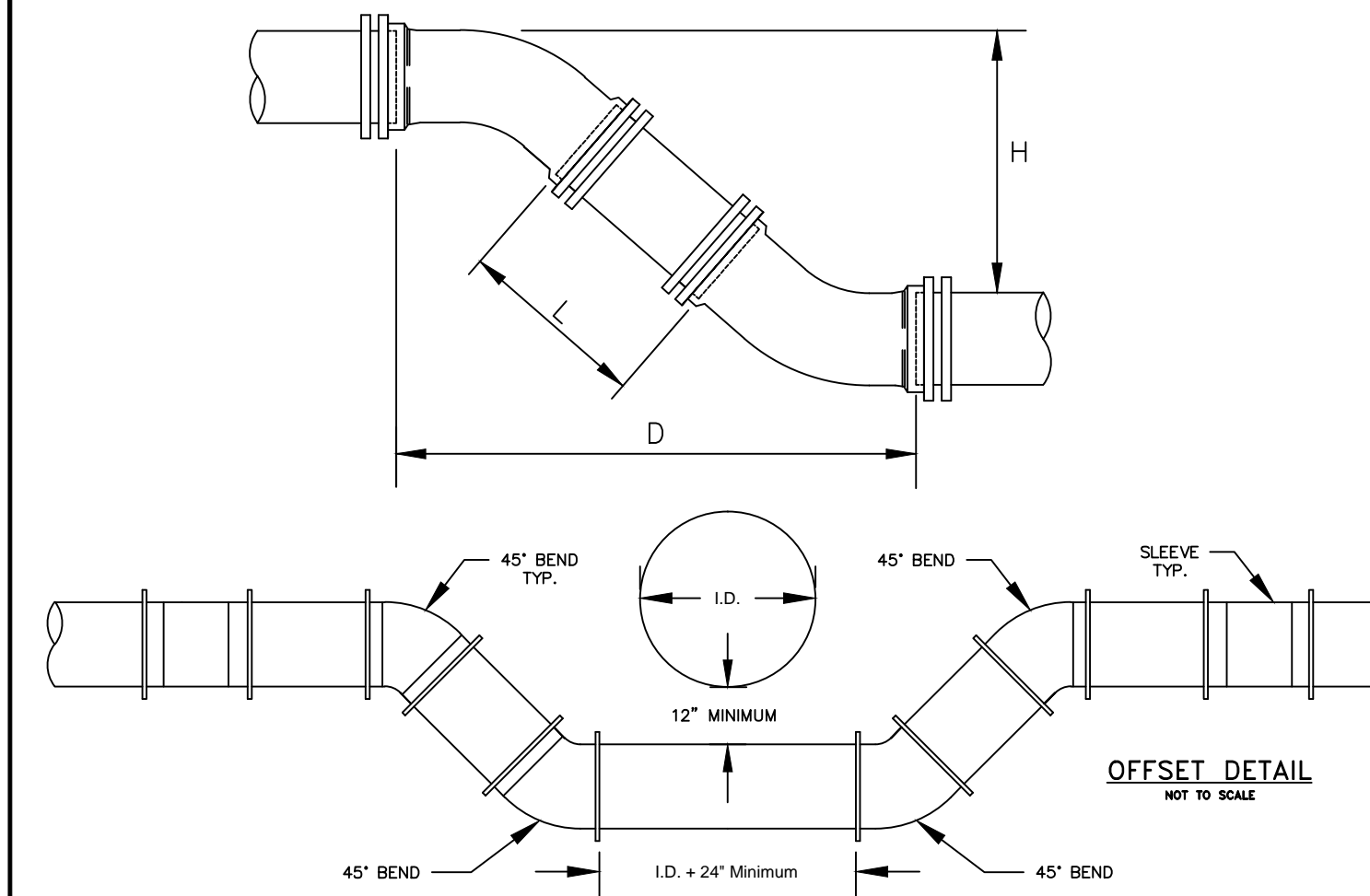
FOOT PIECE

SERVICE BOX

STANDARD FOOT PIECE FOR 3/4" AND 1" CURB STOPS

NOTE : ANY EXTENSION OF SERVICE BOX REQUIRES:
1) 1" FEMALE IRON PIPE COUPLING
2) 1" THREADED PIPE
(THIS IS TO BE A NON-WELDED, TWO PIECE ARRANGEMENT. SLIP ON ADAPTERS ARE NOT PERMISSIBLE.)

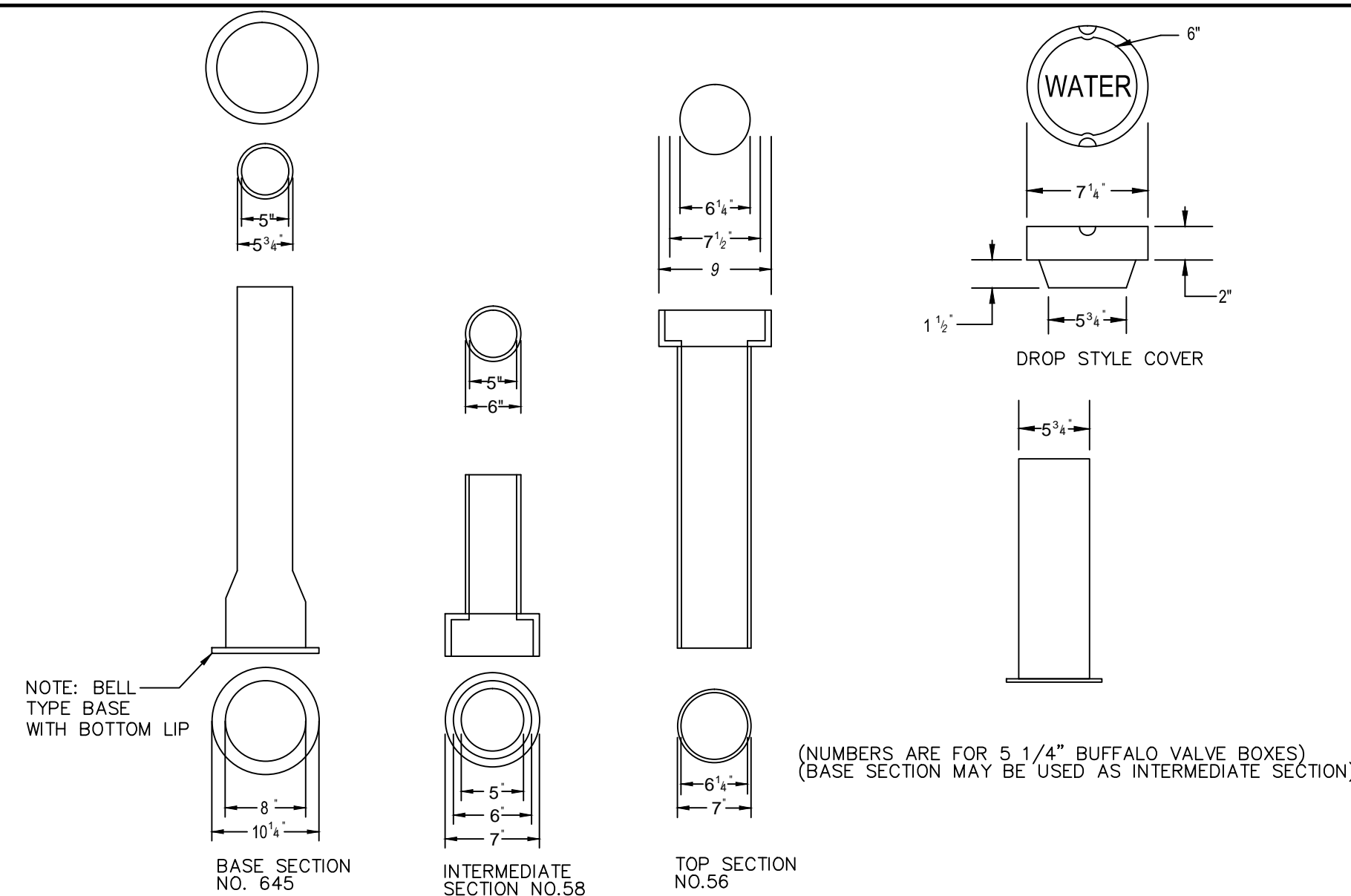
C VALVE BOX AND COVER DETAILS
N.T.S.



H	6" PIPE		8" PIPE		12" PIPE	
	D	L	D	L	D	L
12"	1' 6-1/2"	0' 10-1/2"	1' 7-1/2"	0' 9-1/2"	1' 11-1/2"	0' 5-1/2"
13"	1' 7-1/2"	0' 11-7/8"	1' 8-1/2"	0' 10-7/8"	2' 0-1/2"	0' 6-7/8"
14"	1' 8-1/2"	1' 1-5/16"	1' 9-1/2"	1' 0-5/16"	2' 1-1/2"	0' 8-5/16"
15"	1' 9-1/2"	1' 2-11/16"	1' 10-1/2"	1' 1-11/16"	2' 2-1/2"	0' 9-11/16"
16"	1' 10-1/2"	1' 4-1/8"	1' 11-1/2"	1' 3-1/8"	2' 3-1/2"	0' 11-1/8"
17"	1' 11-1/2"	1' 5-9/16"	2' 0-1/2"	1' 4-9/16"	2' 4-1/2"	0' 9-9/16"
18"	2' 0-1/2"	1' 6-15/16"	2' 1-1/2"	1' 5-15/16"	2' 5-1/2"	1' 1-15/16"
19"	2' 1-1/2"	1' 8-3/8"	2' 2-1/2"	1' 7-3/8"	2' 6-1/2"	1' 3-3/8"
20"	2' 2-1/2"	1' 9-13/16"	2' 3-1/2"	1' 8-13/16"	2' 7-1/2"	1' 4-13/16"
21"	2' 3-1/2"	1' 11-3/16"	2' 4-1/2"	1' 10-3/16"	2' 8-1/2"	1' 6-3/16"
22"	2' 4-1/2"	2' 0-5/8"	2' 5-1/2"	1' 11-5/8"	2' 9-1/2"	1' 7-5/8"
23"	2' 5-1/2"	2' 2"	2' 6-1/2"	2' 1"	2' 10-1/2"	1' 9"
24"	2' 6-1/2"	2' 3-7/16"	2' 7-1/2"	2' 2-7/16"	2' 11-1/2"	1' 10-7/16"
25"	2' 7-1/2"	2' 4-7/8"	2' 8-1/2"	2' 3-7/8"	3' 0-1/2"	1' 11-7/8"
26"	2' 8-1/2"	2' 6-1/4"	2' 9-1/2"	2' 5-1/4"	3' 1-1/2"	2' 1-1/4"
27"	2' 9-1/2"	2' 7-11/16"	2' 10-1/2"	2' 6-11/16"	3' 2-1/2"	2' 2-11/16"
28"	2' 10-1/2"	2' 9-1/8"	2' 11-1/2"	2' 8-1/8"	3' 3-1/2"	2' 4-1/8"
29"	2' 11-1/2"	2' 10-1/2"	3' 0-1/2"	2' 9-1/2"	3' 4-1/2"	2' 5-1/2"
30"	3' 0-1/2"	2' 11-15/16"	3' 1-1/2"	2' 10-15/16"	3' 5-1/2"	2' 6-15/16"
31"	3' 1-1/2"	3' 1-5/16"	3' 2-1/2"	3' 0-5/16"	3' 6-1/2"	2' 8-5/16"
32"	3' 2-1/2"	3' 2-3/4"	3' 3-1/2"	3' 1-3/4"	3' 7-1/2"	2' 9-3/4"
33"	3' 3-1/2"	3' 4-3/16"	3' 4-1/2"	3' 3-3/16"	3' 8-1/2"	2' 11-3/16"
34"	3' 4-1/2"	3' 5-9/16"	3' 5-1/2"	3' 4-9/16"	3' 9-1/2"	3' 0-9/16"
35"	3' 5-1/2"	3' 7"	3' 6-1/2"	3' 6"	3' 10-1/2"	3' 2"
36"	3' 6-1/2"	3' 8-7/16"	3' 7-1/2"	3' 7-7/16"	3' 11-1/2"	3' 3-7/16"
37"	3' 7-1/2"	3' 9-13/16"	3' 8-1/2"	3' 8-13/16"	4' 0-1/2"	3' 4-13/16"
38"	3' 8-1/2"	3' 11-1/4"	3' 9-1/2"	3' 10-1/4"	4' 1-1/2"	3' 6-1/4"
39"	3' 9-1/2"	4' 0-11/16"	3' 10-1/2"	3' 11-11/16"	4' 2-1/2"	3' 7-11/16"
40"	3' 10-1/2"	4' 2-1/8"	3' 11-1/2"	4' 1-1/8"	4' 3-1/2"	3' 9-1/8"
41"	3' 11-1/2"	4' 3-1/2"	4' 0-1/2"	4' 2-1/2"	4' 4-1/2"	3' 10-1/2"
42"	4' 0-1/2"	4' 4-7/8"	4' 1-1/2"	4' 3-7/8"	4' 5-1/2"	3' 11-7/8"
43"	4' 1-1/2"	4' 6-5/16"	4' 2-1/2"	4' 5-5/16"	4' 6-1/2"	4' 1-5/16"
44"	4' 2-1/2"	4' 7-3/4"	4' 3-1/2"	4' 6-3/4"	4' 7-1/2"	4' 2-3/4"
45"	4' 3-1/2"	4' 9-1/8"	4' 4-1/2"	4' 8-1/8"	4' 8-1/2"	4' 4-1/8"
46"	4' 4-1/2"	4' 10-9/16"	4' 5-1/2"	4' 9-9/16"	4' 9-1/2"	4' 5-9/16"
47"	4' 5-1/2"	4' 11-15/16"	4' 6-1/2"	4' 10-15/16"	4' 10-1/2"	4' 6-15/16"
48"	4' 6-1/2"	5' 1-3/8"	4' 7-1/2"	5' 0-3/8"	4' 11-1/2"	4' 8-3/8"
49"	4' 7-1/2"	5' 2-13/16"	4' 8-1/2"	5' 1-13/16"	5' 0-1/2"	4' 9-13/16"
50"	4' 8-1/2"	5' 4-3/16"	4' 9-1/2"	5' 3-3/16"	5' 1-1/2"	4' 11-3/16"
51"	4' 9-1/2"	5' 5-5/8"	4' 10-1/2"	5' 4-5/8"	5' 2-1/2"	5' 0-5/8"
52"	4' 10-1/2"	5' 7-1/8"	4' 11-1/2"	5' 6-1/8"	5' 3-1/2"	5' 2-1/8"
53"	4' 11-1/2"	5' 8-7/16"	5' 0-1/2"	5' 7-7/16"	5' 4-1/2"	5' 3-7/16"
54"	5' 0-1/2"	5' 9-7/8"	5' 1-1/2"	5' 8-7/8"	5' 5-1/2"	5' 4-7/8"
55"	5' 1-1/2"	5' 11-5/16"	5' 2-1/2"	5' 10-5/16"	5' 6-1/2"	5' 6-5/16"

NOTE: DIMENSIONS APPLICABLE FOR SIGMA COMPACT BENDS. FOR TYLER COMPACT BENDS, ADD 1/2" TO 'D' DIMENSION AND SUBTRACT 1/2" FROM 'L' DIMENSION. FOR OTHER FITTINGS REFER TO MANUFACTURER'S RECOMMENDATIONS.

D TYPICAL MAIN OFFSET
N.T.S.

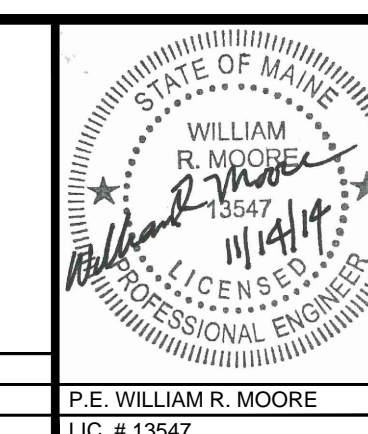


(NUMBERS ARE FOR 5 1/4" BUFFALO VALVE BOXES)
(BASE SECTION MAY BE USED AS INTERMEDIATE SECTION)

B VALVE BOX AND COVER
N.T.S.

PRELIMINARY - NOT FOR CONSTRUCTION

1	11.14.14	FINAL LEVEL III SUBMISSION TO CITY OF PORTLAND
REV	DATE	DESCRIPTION
		REVISIONS



PROJECT	midtown PORTLAND, MAINE
SHEET TITLE	WATER DETAILS
CLIENT	THE FEDERATED COMPANIES

FST 100 YEARS	FAY, SPOFFORD & THORNDIKE ENGINEERS • PLANNERS • SCIENTISTS 778 MAIN ST., SUITE 8, SOUTH PORTLAND, ME 04106 FORMERLY DELUCA-HOFFMAN ASSOCIATES
DRAWN: KEV	DATE: OCTOBER 2014
DESIGNED: WGH/BEK	SCALE: NTS
CHECKED: WGH/SRB	JOB NO. SP-M037B
FILE NAME: 3062-DETAIL SHEETS	
SHEET	C-7.5