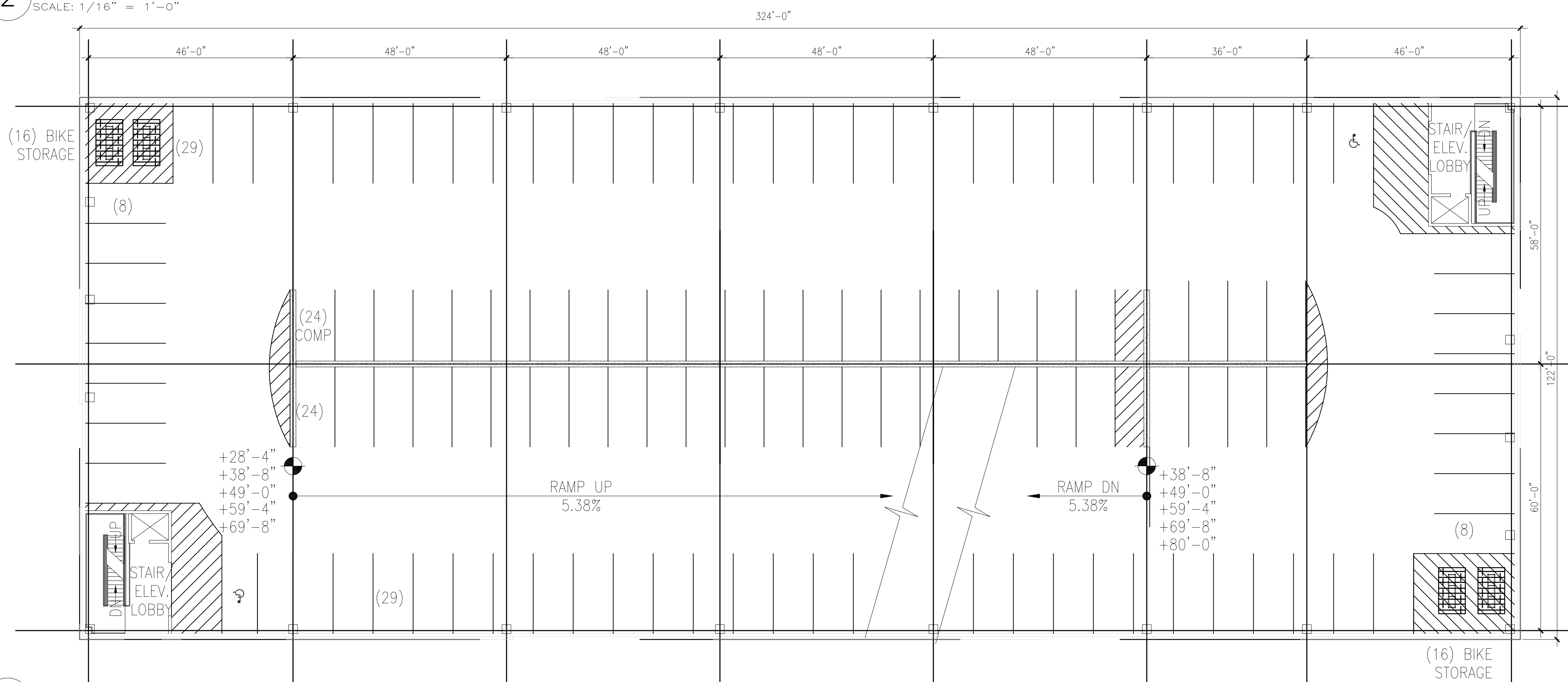


2 ROOF PARKING LEVEL
SCALE: 1/16" = 1'-0"



1 TYPICAL PARKING PLAN
SCALE: 1/16" = 1'-0"

PARKING SPACE TABULATION

| TIER | STANDARD 9' X 18' | COMP 9' X 16' | VAN ACCESSIBLE 8'-0"x18'-0"+8' AISLE | STANDARD ACCESSIBLE 8'-0"x18'-0"+5' AISLE | MOTOR- CYCLE 4' X 9' | BICYCLE STORAGE |
|----------|----------------------|------------------|---|--|----------------------------|--------------------------|
| 1ST | - | - | - | - | - | 0 |
| 2ND | 54 | 9 | 4 | 0 | 6 | 32 |
| 3RD | 105 | 19 | 2 | 0 | - | 32 |
| 4TH | 105 | 19 | 2 | 0 | - | 32 |
| 5TH | 105 | 19 | 2 | 0 | - | 32 |
| 6TH | 105 | 19 | 2 | 0 | - | 32 |
| 7TH | 105 | 19 | 2 | 0 | - | 32 |
| TOP | 96 | 5 | 1 | 0 | - | 0 |
| SUBTOTAL | 675 | 109 | 15 | 0 | 6 | 192 |
| TOTAL | 799 VEHICLE SPACES | | | | 6 MOTOR-CYCLE SPACES | 192 BICYCLE SPACES |

Midtown Portland
Building Two
Portland, Maine
19 February 2015