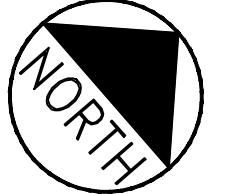


REFER TO DRAINAGE SCHEDULE D FOR INFORMATION ON DRAINAGE SYSTEM

SEE PLAN C-3.8 FOR DETAILED GRADING AND DRAINAGE FOR ELM STREET.



- AREAS OF FILL REQUIRE MITIGATION OF WEIGHT FILL BASED UPON:
- DEPTH OF FILL = D
  - LIGHT WEIGHT CONCRETE THICKNESS = (D-6") x 1.5
  - EXCAVATE FROM EXISTING GRADE TO REQUIRED CONCRETE THICKNESS DEPTH
  - PLACE LIGHT WEIGHT CONCRETE
  - PLACE AGGREGATES ABOVE THE CONCRETE AS REQUIRED BY DESIGN SECTION

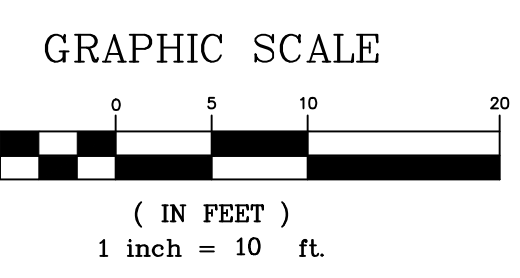
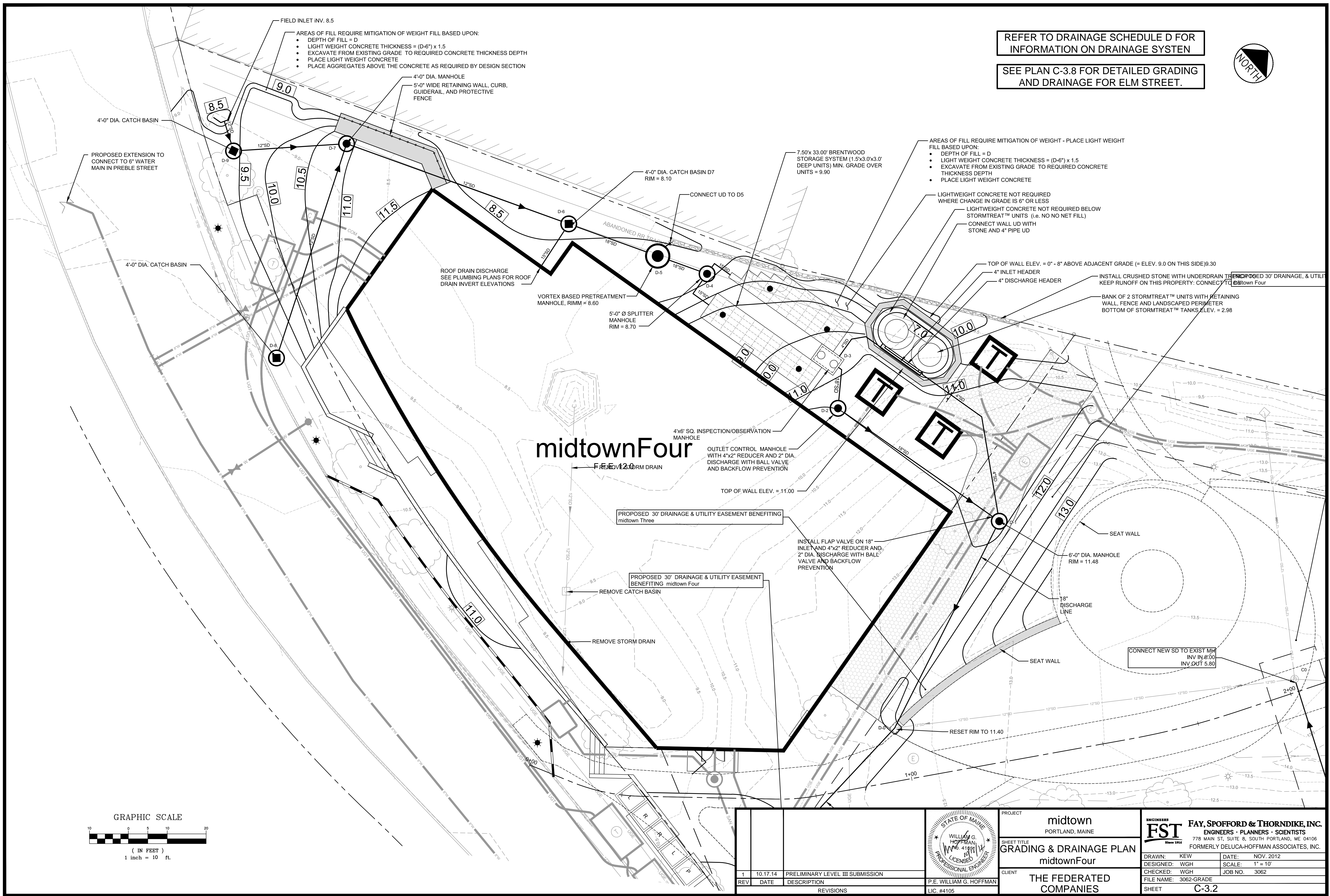
- AREAS OF FILL REQUIRE MITIGATION OF WEIGHT - PLACE LIGHT WEIGHT FILL BASED UPON:
- DEPTH OF FILL = D
  - LIGHT WEIGHT CONCRETE THICKNESS = (D-6") x 1.5
  - EXCAVATE FROM EXISTING GRADE TO REQUIRED CONCRETE THICKNESS DEPTH
  - PLACE LIGHT WEIGHT CONCRETE

- LIGHTWEIGHT CONCRETE NOT REQUIRED WHERE CHANGE IN GRADE IS 6" OR LESS
- LIGHTWEIGHT CONCRETE NOT REQUIRED BELOW STORMTREAT™ UNITS (i.e. NO NO NET FILL)
- CONNECT WALL UP WITH STONE AND 4" PIPE UP

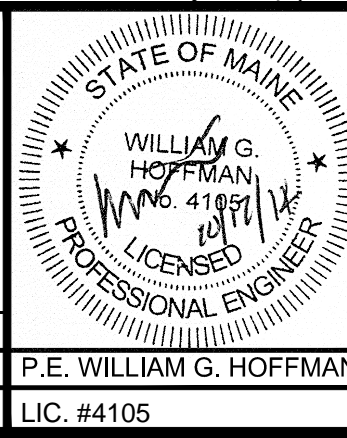
INSTALL CRUSHED STONE WITH UNDERDRAIN THROUGH PROPOSED 30" DRAINAGE, & UTILITIES TO KEEP RUNOFF ON THIS PROPERTY: CONNECT TO DRAIN TOWN FOUR

BANK OF 2 STORMTREAT™ UNITS WITH RETAINING WALL, FENCE AND LANDSCAPED PERIMETER

BOTTOM OF STORMTREAT™ TANKS ELEV. = 2.98



REV	DATE	DESCRIPTION
1	10.17.14	PRELIMINARY LEVEL III SUBMISSION
REVISIONS		



PROJECT  
midtown  
PORTLAND, MAINE

SHEET TITLE  
GRADING & DRAINAGE PLAN  
midtownFour

CLIENT  
THE FEDERATED COMPANIES

ENGINEERS  
**FST**  
FAY, SPOFFORD & THORNDIKE, INC.  
ENGINEERS • PLANNERS • SCIENTISTS  
778 MAIN ST., SUITE 8, SOUTH PORTLAND, ME 04106  
FORMERLY DELUCA-HOFFMAN ASSOCIATES, INC.

DRAWN: KEW DATE: NOV. 2012  
DESIGNED: WGH SCALE: 1" = 10'  
CHECKED: WGH JOB NO. 3062  
FILE NAME: 3062-GRADE  
SHEET C-3.2