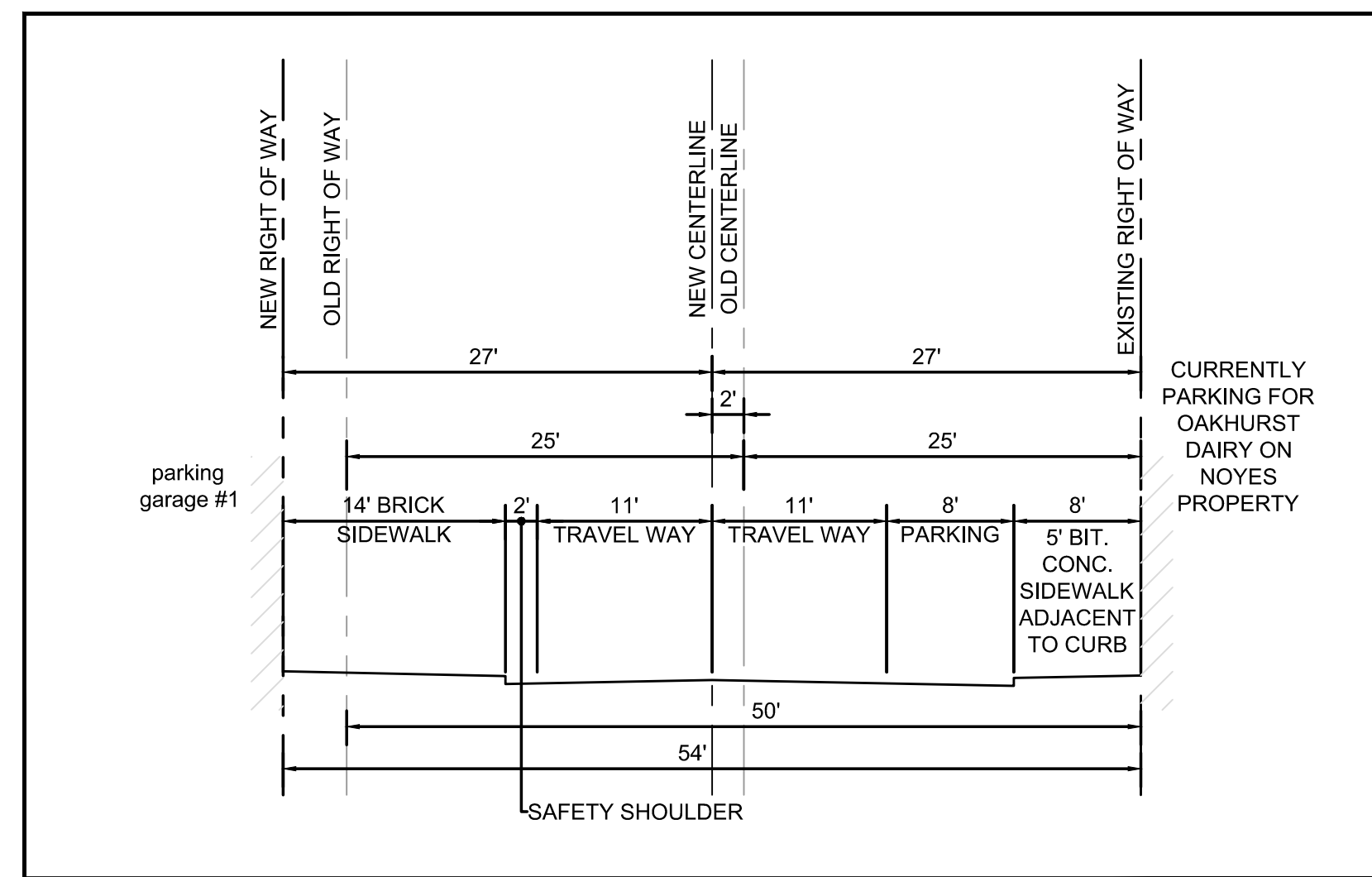


OVERALL SITE LAYOUT  
SCALE 1" = 40'

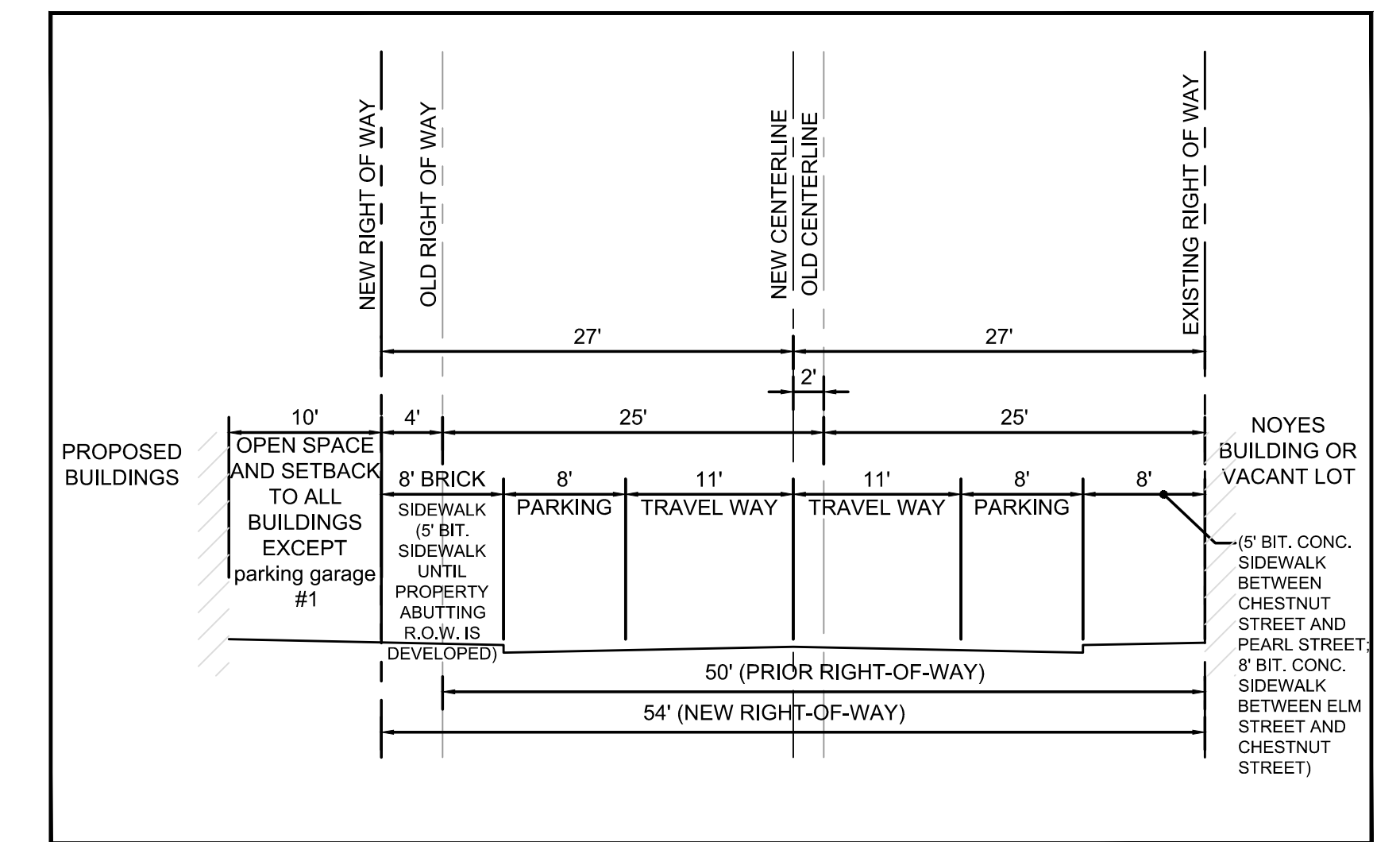
SOMERSET STREET PARKING COMPARISON		
DESCRIPTION	LOCATION	NO. OF SPACES
REVISED PLAN	SPACES TO NORTH OF CENTERLINE	13
	SPACES TO SOUTH OF CENTERLINE	36
	TOTAL SPACES	49

THE APPLICANT IS REQUESTING SOMERSET STREET PARKING BE 15 MINUTE SPACES TO BENEFIT GROUND FLOOR RETAIL PARKING. THIS WILL BE REVIEWED WITH THE CITY OF PORTLAND PARKING DIVISION.

PARKING SPACES ARE DELINEATED ON THIS DRAWING FOR PLANNING STAFF REVIEW. THE SPACES WILL NOT BE DELINEATED OR PAINTED ON THE PAVEMENT WHEN THE PROJECT IS CONSTRUCTED (PER CITY STANDARDS).



TYPICAL SECTION IN FRONT OF parking garage #1  
NOT TO SCALE



TYPICAL SECTION WITH PARKING ON EACH SIDE OF STREET  
NOT TO SCALE

