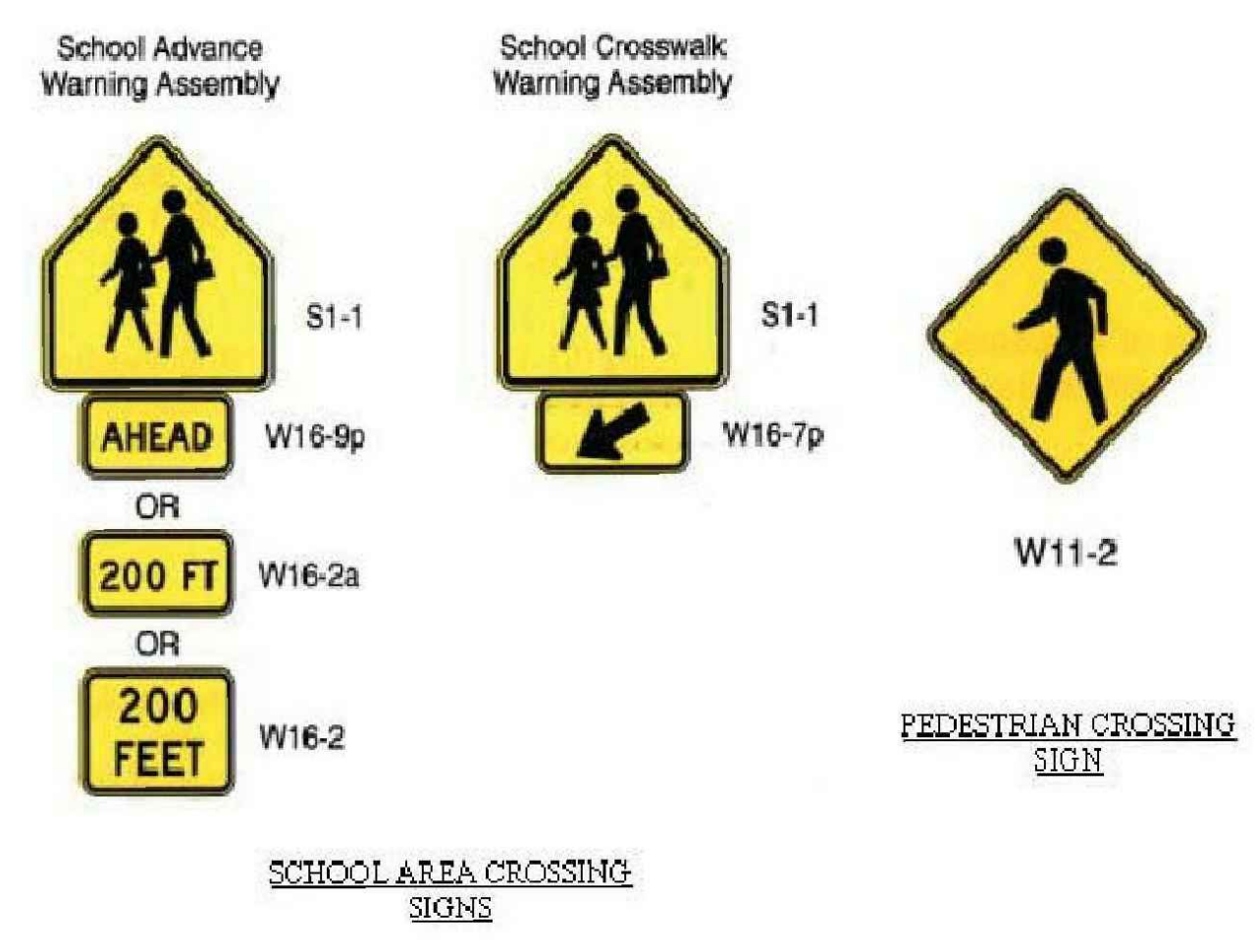


(A) TYPICAL CROSSWALK MARKINGS
N.T.S.

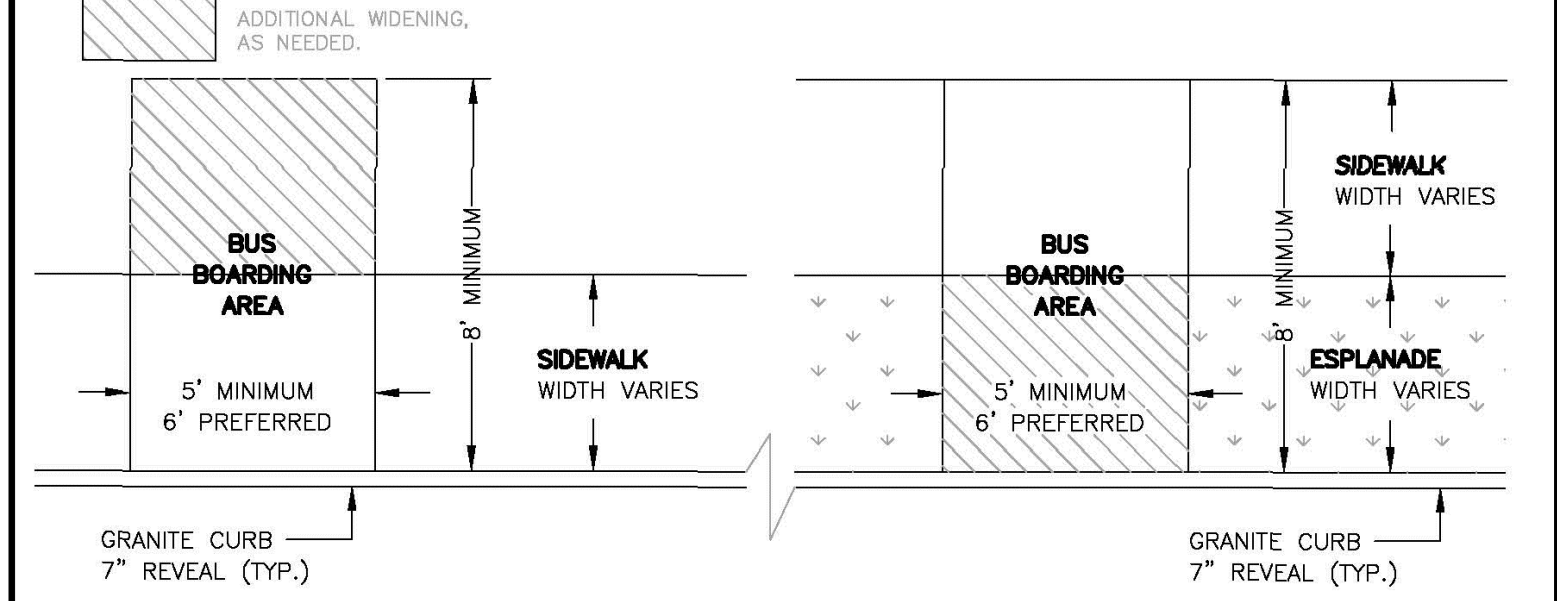


(B) UNSIGNALIZED PEDESTRIAN CROSSWALK SIGNAGE
N.T.S.



(C) TYPICAL CROSSWALK SIGNAGE
N.T.S.

- NOTES:**
- SURFACE.** BUS STOP BOARDING AREAS SHALL HAVE A FIRM, STABLE SURFACE.
 - DIMENSIONS.** BUS STOP BOARDING AREAS SHALL PROVIDE A CLEAR LENGTH OF 8' MINIMUM, MEASURED PERPENDICULAR TO THE CURB OR VEHICLE ROADWAY EDGE, AND A CLEAR WIDTH OF 5' MINIMUM, MEASURED PARALLEL TO THE VEHICLE ROADWAY. THIS AREA SHALL BE CLEAR OF ANY OBSTRUCTIONS, INCLUDING BUT NOT LIMITED TO: BICYCLE RACKS, LIGHT POLES, UTILITY POLES, FIRE HYDRANTS, STREET SIGNS, STREET FURNITURE, NEWSPAPER BOXES OR SIMILAR OBSTACLES.
 - CONNECTION.** BUS STOP BOARDING AREAS SHALL BE CONNECTED TO STREETS, SIDEWALKS OR PEDESTRIAN PATHS BY AN ADA ACCESSIBLE ROUTE.
 - SLOPE.** PARALLEL TO THE ROADWAY, THE SLOPE OF THE BUS STOP BOARDING AREA SHALL BE THE SAME AS THE ROADWAY, TO THE MAXIMUM EXTENT PRACTICABLE. PERPENDICULAR TO THE ROADWAY, THE SLOPE OF THE BUS STOP BOARDING AREA SHALL NOT EXCEED 2%.



(D) BUS STOP BOARDING AREA LAYOUT
N.T.S.



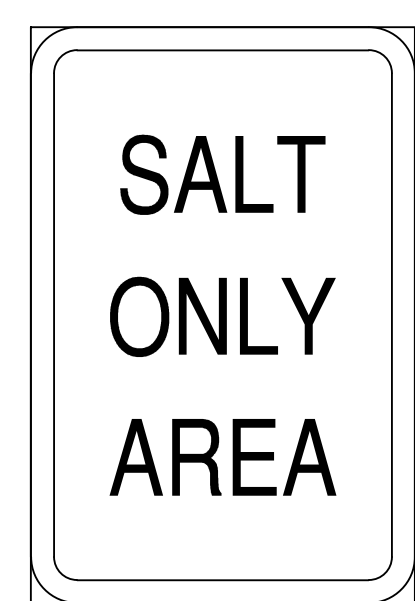
B1



B2



B3



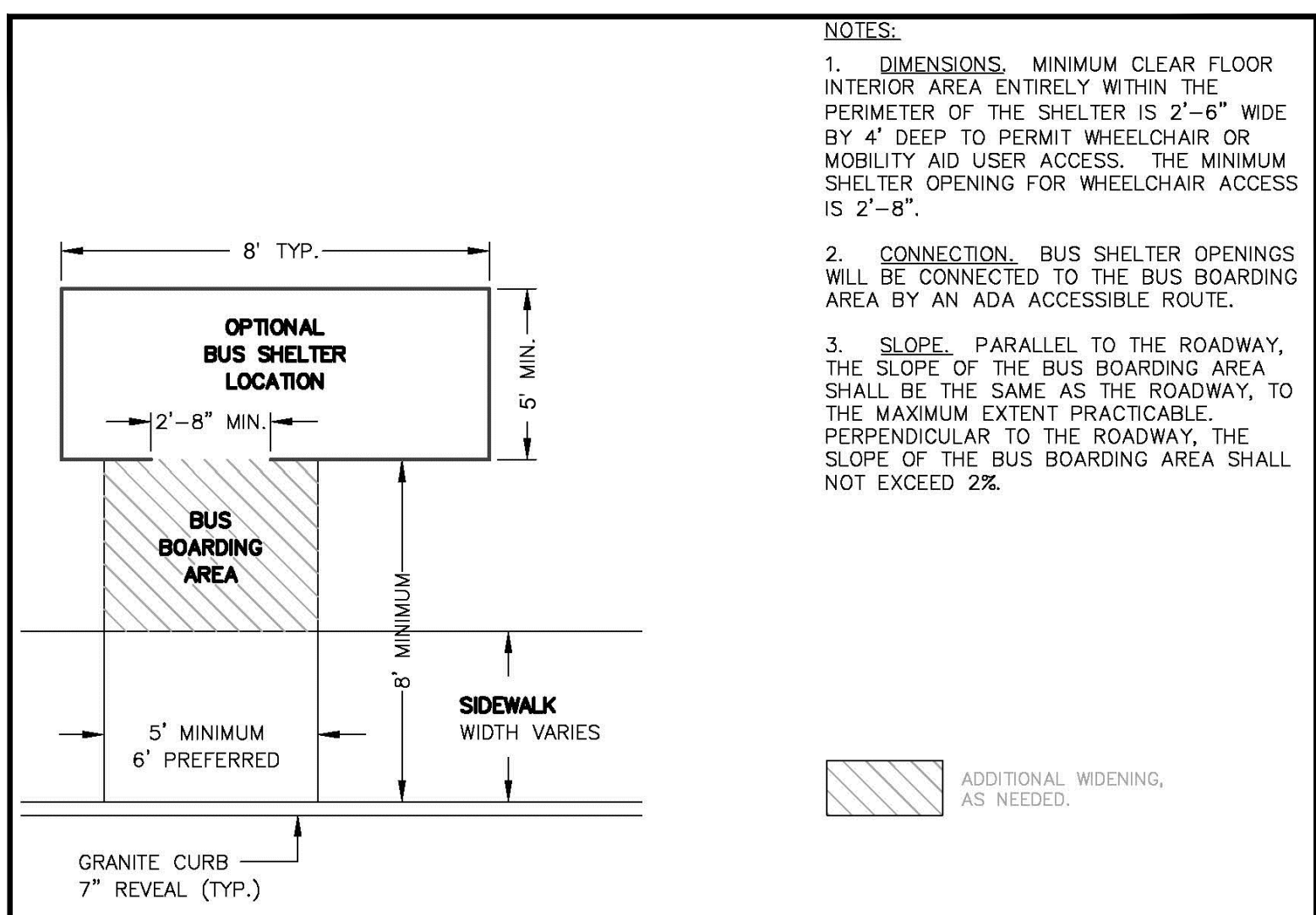
C



E1



E2



(E) BUS SHELTER AND SHELTER SITING LAYOUT
N.T.S.



F1



F2



G



H1



H2



K1



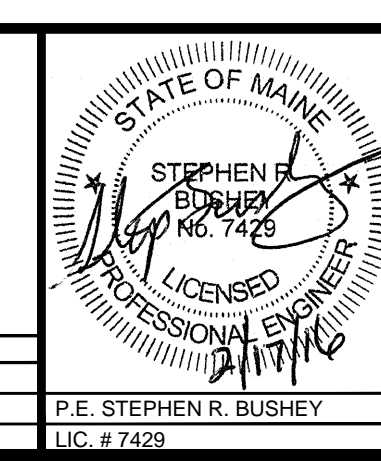
K2



K3

PRELIMINARY - NOT FOR CONSTRUCTION

REV	DATE	DESCRIPTION	REVISIONS
2	02.17.16	FINAL SITE PLANS WITH CONDITIONS OF APPROVAL	
1	11.14.14	FINAL LEVEL III SUBMISSION TO CITY OF PORTLAND	



PROJECT	midtown PORTLAND, MAINE
SHEET TITLE	TRANSPORTATION SYSTEMS AND STREET DESIGN
CLIENT	FEDQ DV001, LLC

FST 100 YEARS	FAY, SPOFFORD & THORNDIKE ENGINEERS • PLANNERS • SCIENTISTS 778 MAIN ST., SUITE 8, SOUTH PORTLAND, ME 04106 FORMERLY DELUCA-HOFFMAN ASSOCIATES
DRAWN: DED	DATE: OCTOBER 2014
DESIGNED: BEK	SCALE: NTS
CHECKED: SRB	JOB NO.: SP-M037B
FILE NAME: 3062-DETAIL SHEETS	
SHEET	C-7.2