

ELEVATION VIEW

PROVIDE STEEL COUPLER
6'-0" MAX. SPACING*

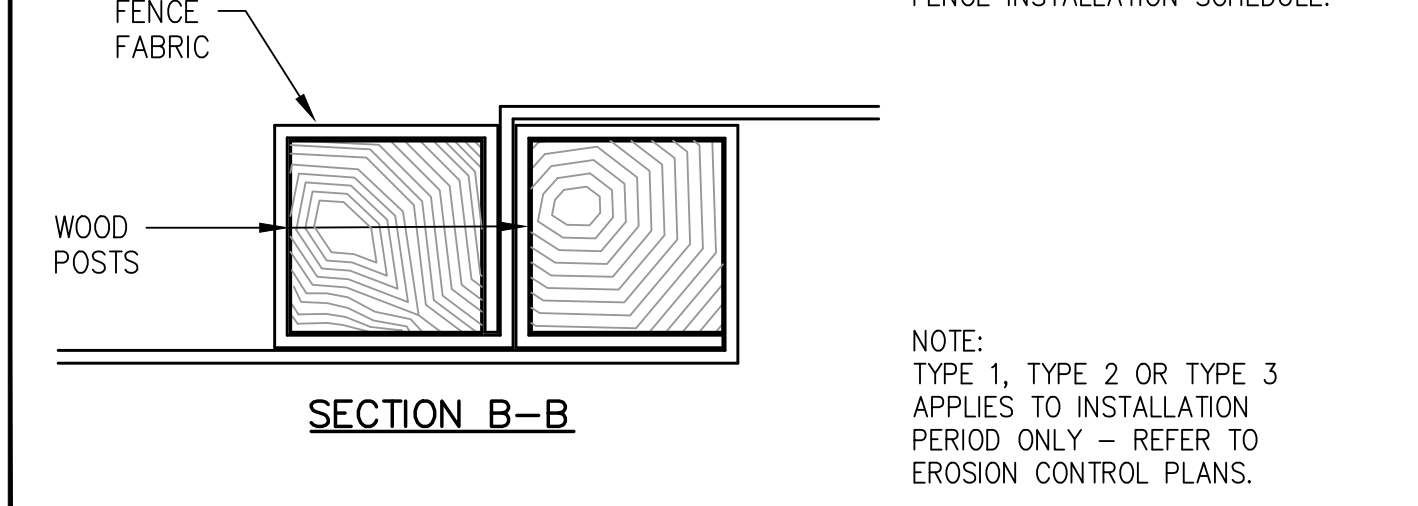
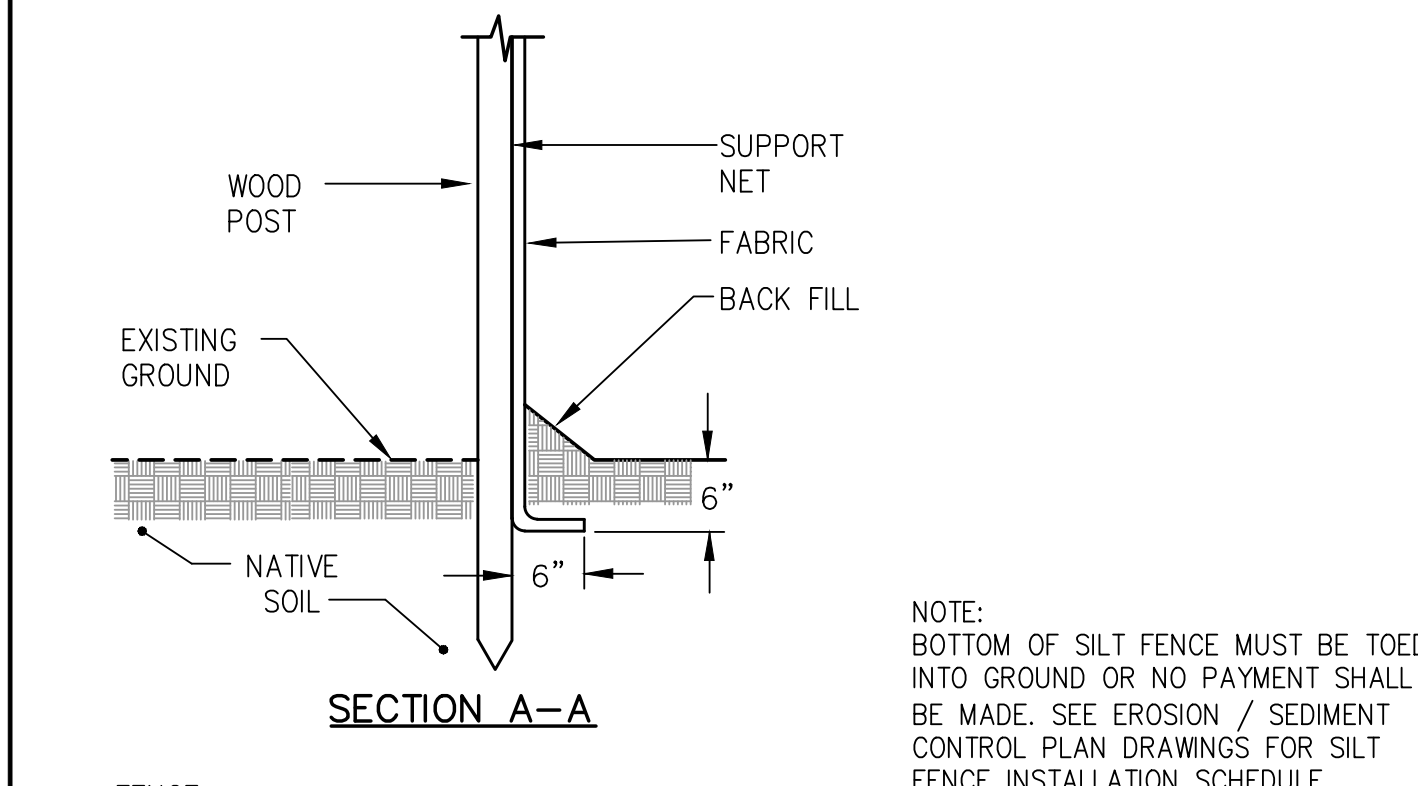
SEDIMENTATION CONTROL FABRIC

WOOD POST (TYPICAL)

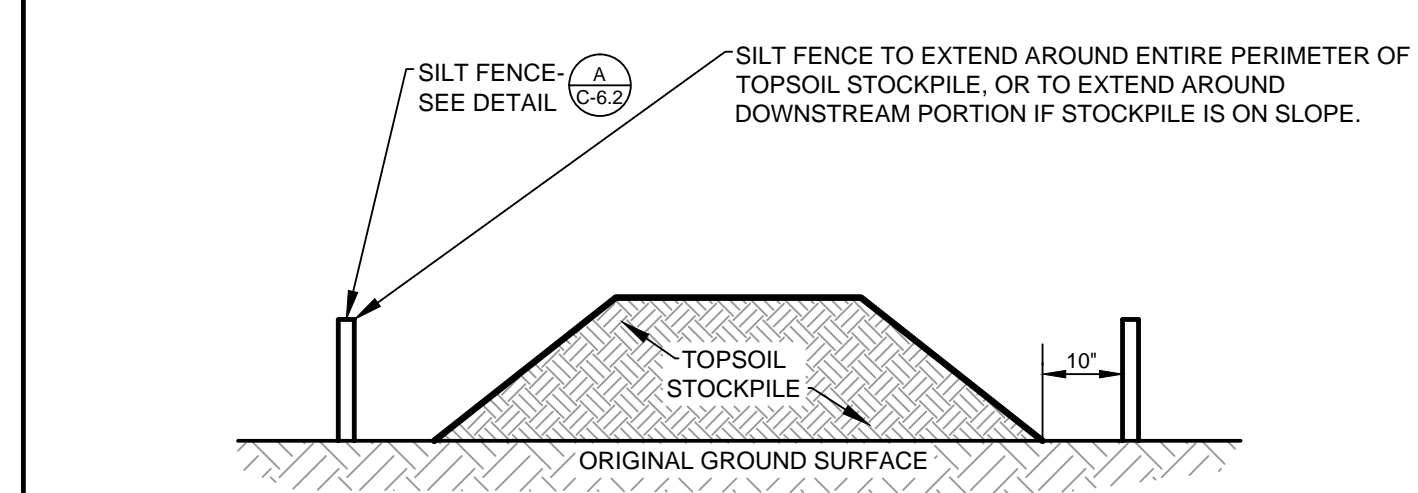
GROUND SURFACE

2'-0" MIN.

*NOTE:
THE SILT FENCE SHOULD HAVE A MAXIMUM STAKING DISTANCE OF 6' UNLESS THE FENCE IS SUPPORTED BY WIRE FENCE REINFORCEMENT A MAXIMUM 14 GAUGE AND WITH A MINIMUM MESH SPACING OF 6".

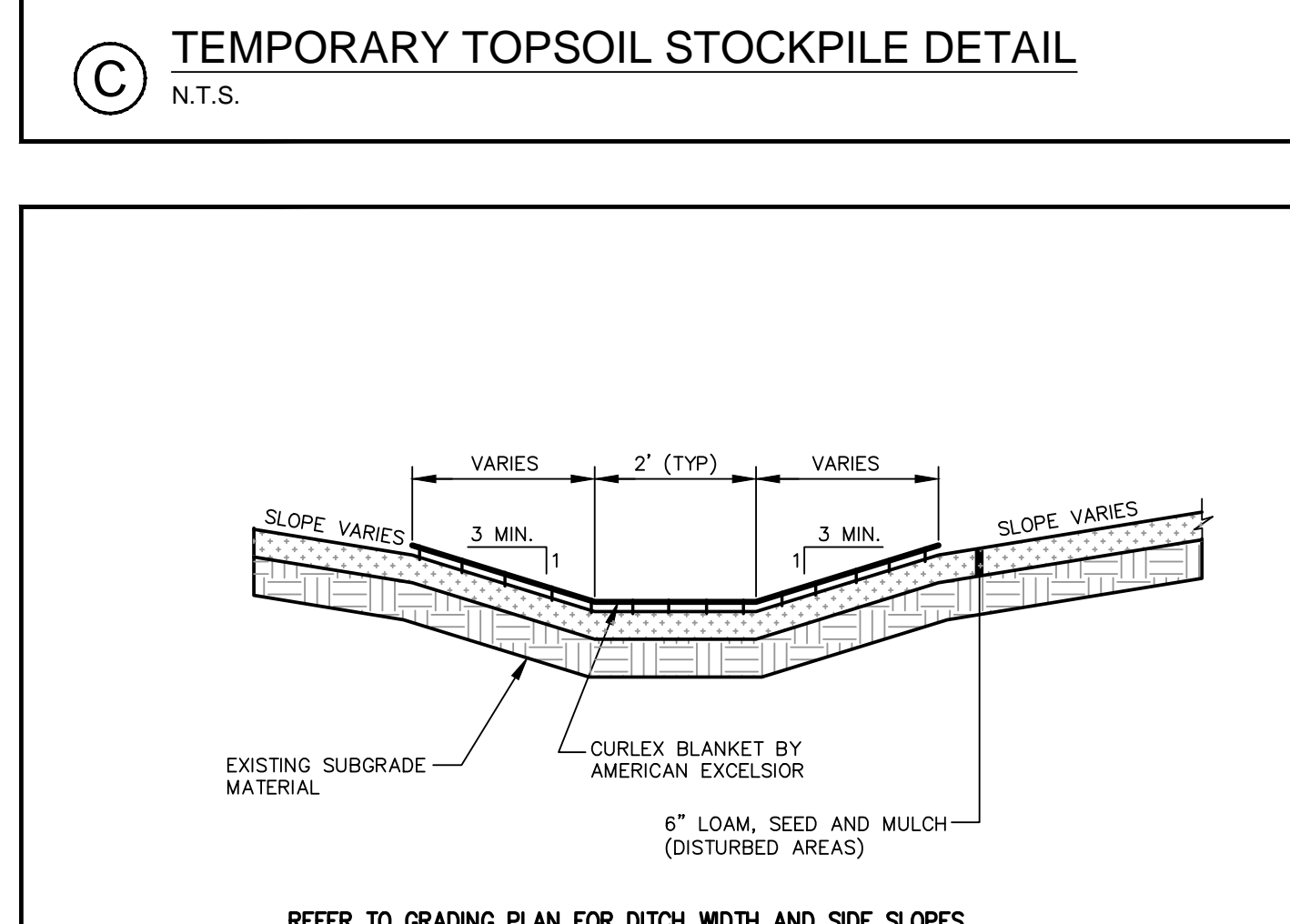


(A) SILT FENCE DETAIL
N.T.S.



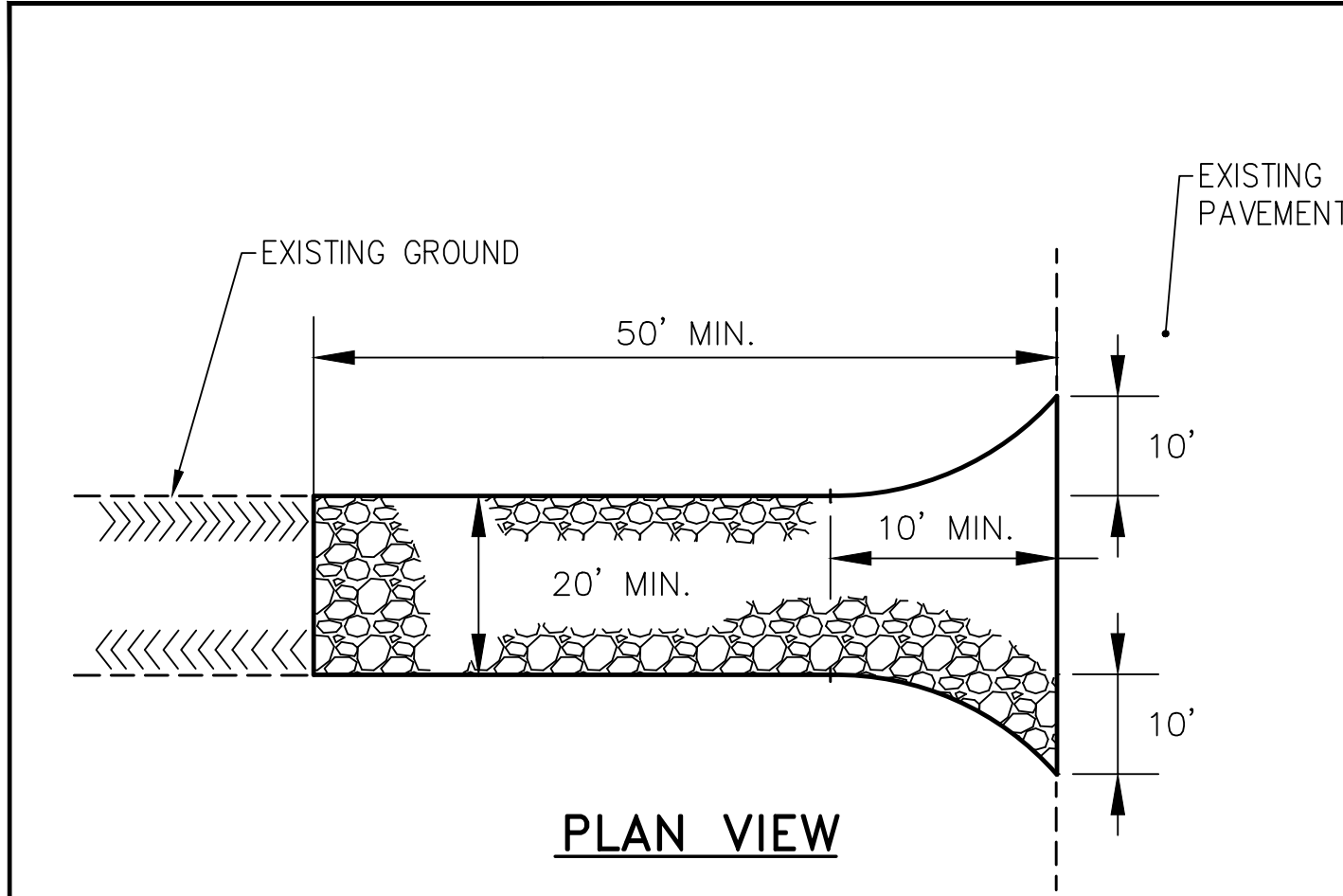
TEMPORARY TOPSOIL STOCKPILE DETAIL
N.T.S.

NOTES:
1. AN ON-SITE DRAINAGE SWALE SHALL BE LOCATED BETWEEN THE TOPSOIL STOCKPILE AND OFF-SITE PROPERTY.
2. REFERENCE IS MADE TO THE SILT FENCE DETAIL (A) FOR MATERIALS AND INSTALLATION METHODS.
3. IF THE STOCKPILE IS TO REMAIN FOR MORE THAN 14 DAYS, IT SHALL BE STABILIZED WITH STRAW BLANKET OR SEEDED TO MINIMIZE EROSION.
4. INSPECTION OF SILT FENCES SHALL BE AT LEAST ONCE PER WEEK AND AFTER RAIN EVENTS IN EXCESS OF HALF INCH (1/2") PER DAY OR EQUAL SNOW MELT. REPAIR OR REPLACEMENT OF SILT FENCE SHALL BE MADE PROMPTLY AS REQUIRED.
5. SEDIMENT TRAPPED BY THE SILT FENCES SHALL BE REMOVED AND PROPERLY DISPOSED OF WHENEVER SEDIMENT ACCUMULATION DEPTH AT THE SILT FENCE IS APPROXIMATELY EQUAL TO 12 (12) INCHES (ONE HALF OF SILT FENCE HEIGHT).
6. SILT FENCES SHALL BE MAINTAINED IN PLACE UNTIL TOPSOIL STOCKPILE HAS BEEN ELIMINATED AND SHALL BE REMOVED ONLY WHEN DIRECTED BY VILLAGE ENGINEERING.

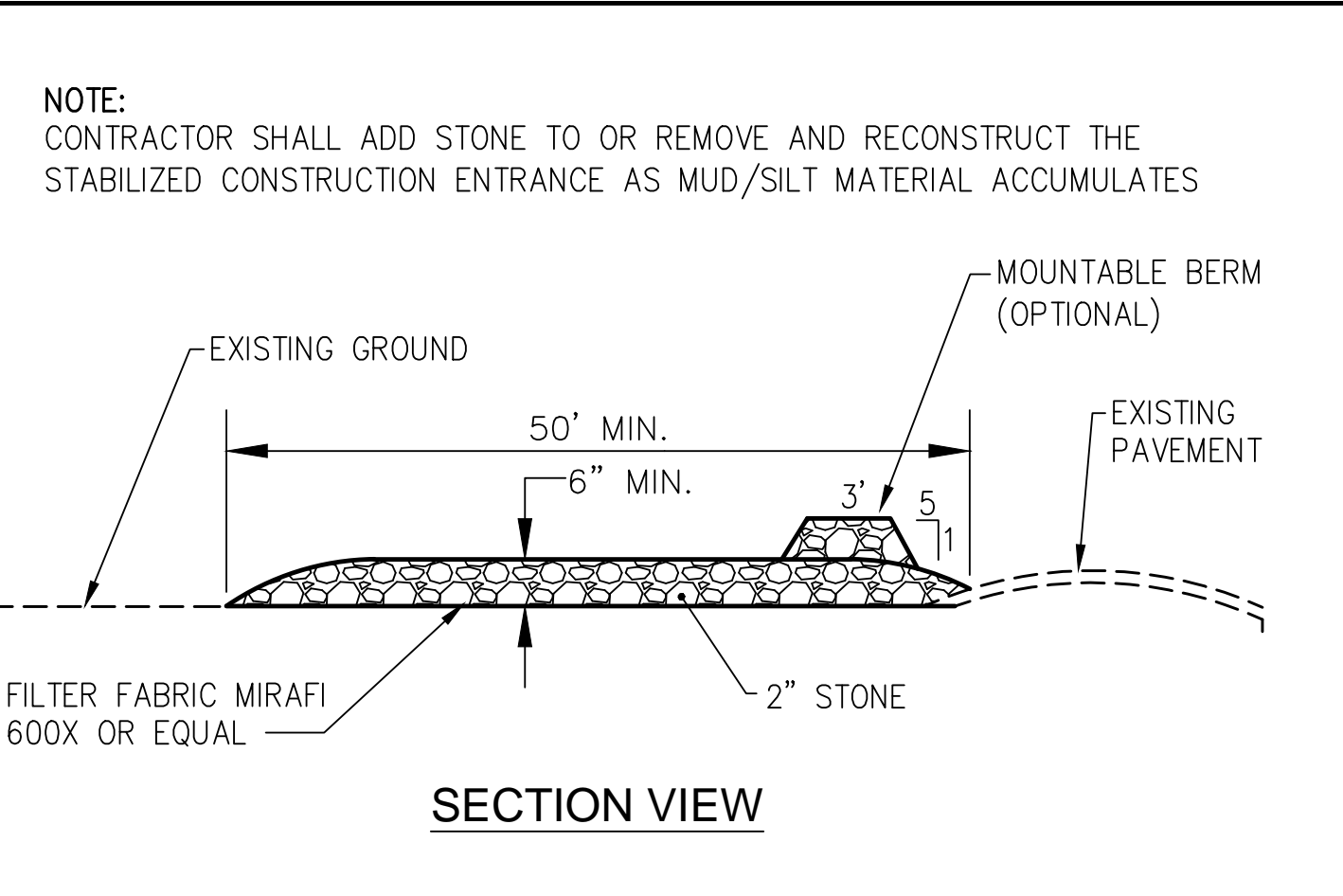


(D) VEGETATIVE DRAINAGE SWALE
N.T.S.

REFER TO GRADING PLAN FOR DITCH WIDTH AND SIDE SLOPES.



(B) STABILIZED CONSTRUCTION ENTRANCE
N.T.S.



(C) STABILIZED CONSTRUCTION ENTRANCE
N.T.S.

NOTE:
CONTRACTOR SHALL ADD STONE TO OR REMOVE AND RECONSTRUCT THE STABILIZED CONSTRUCTION ENTRANCE AS MUD/SILT MATERIAL ACCUMULATES

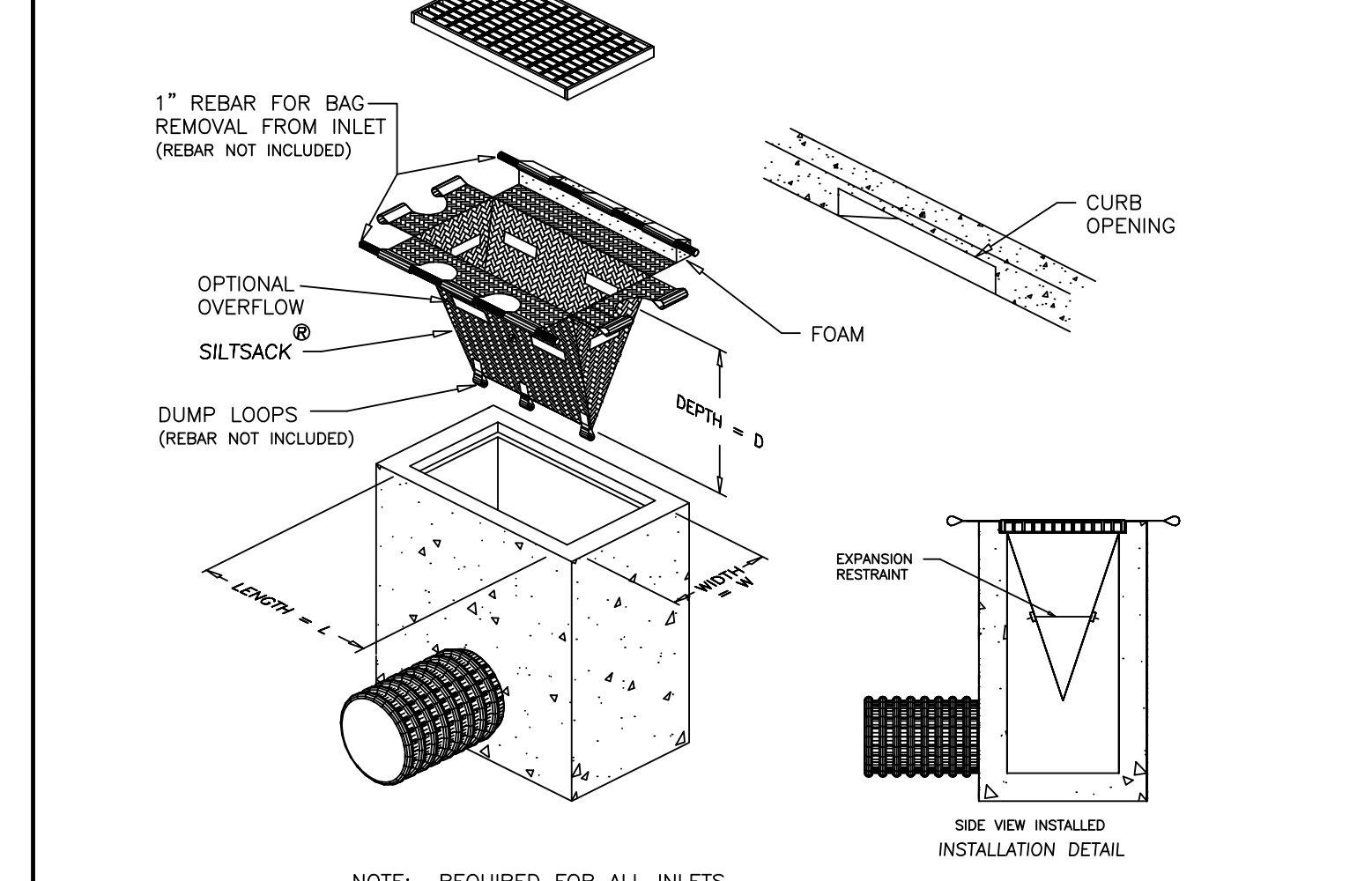


(I) WHEEL WASH
N.T.S.



(I) WHEEL WASH
N.T.S.

NOTES:
CONTRACTOR TO REMOVE ACCUMULATED SEDIMENT FROM WHEEL WASH MAY BE PIPED OR PUMPED TO AN APPROVED SEDIMENT TRAP



SILTSACK® SPECIFICATIONS

NOTE: REQUIRED FOR ALL INLETS

NOTE: THE SILTSACK WILL BE MANUFACTURED FROM A WOVEN POLYPROPYLENE FABRIC THAT MEETS OR EXCEEDS THE FOLLOWING SPECIFICATIONS.

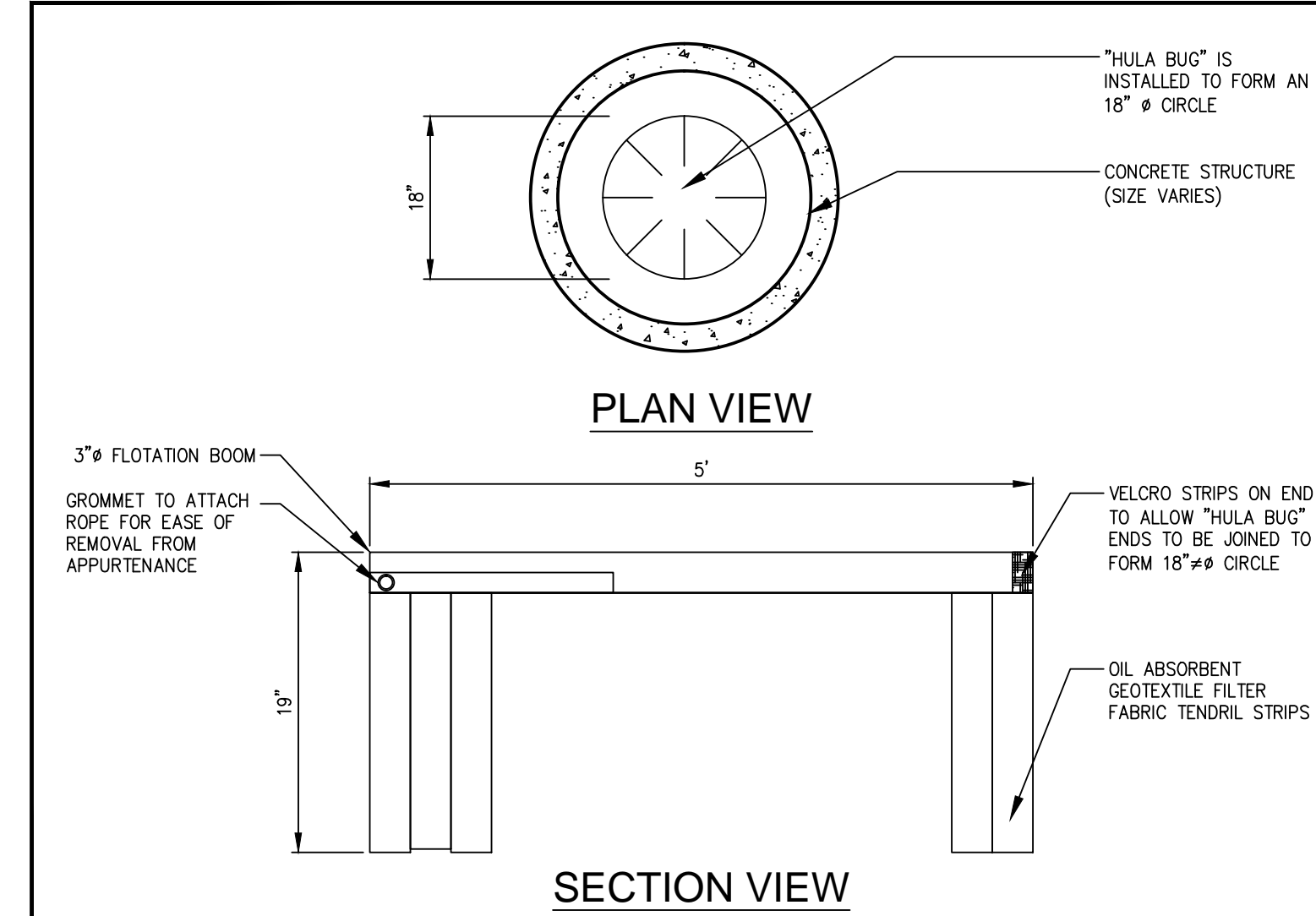
REGULAR FLOW SILTSACK®
(FOR INLET LOCATED INTERMEDIATE ALONG DOWNHILL GRADE)
(FOR AREAS OF LOW TO MODERATE PRECIPITATION AND RUN-OFF)

PROPERTIES	TEST METHOD	UNITS
GRAB TENSILE STRENGTH	ASTM D-4632	300 LBS
GRAB TENSILE ELONGATION	ASTM D-4632	20 %
PUNCTURE	ASTM D-4833	120 LBS
MULLEN BURST	ASTM D-3786	800 PSI
TRAPEZOID TEAR	ASTM D-4533	120 LBS
UV RESISTANCE	ASTM D-4355	80 %
APPARENT OPENING SIZE	ASTM D-4751	40 US SIEVE
FLOW RATE	ASTM D-4491	40 GAL/MIN/SQ FT
PERMITTIVITY	ASTM D-4491	0.55 SEC-1

HI-FLOW SILTSACK®
(FOR USE IN LOW POINTS/SAGS)
(FOR AREAS OF MODERATE TO HEAVY PRECIPITATION AND RUN-OFF)

PROPERTIES	TEST METHOD	UNITS
GRAB TENSILE STRENGTH	ASTM D-4632	265 LBS
GRAB TENSILE ELONGATION	ASTM D-4632	20 %
PUNCTURE	ASTM D-4833	135 LBS
MULLEN BURST	ASTM D-3786	420 PSI
TRAPEZOID TEAR	ASTM D-4533	45 LBS
UV RESISTANCE	ASTM D-4355	90 %
APPARENT OPENING SIZE	ASTM D-4751	20 US SIEVE
FLOW RATE	ASTM D-4491	200 GAL/MIN/SQ FT
PERMITTIVITY	ASTM D-4491	1.5 SEC-1

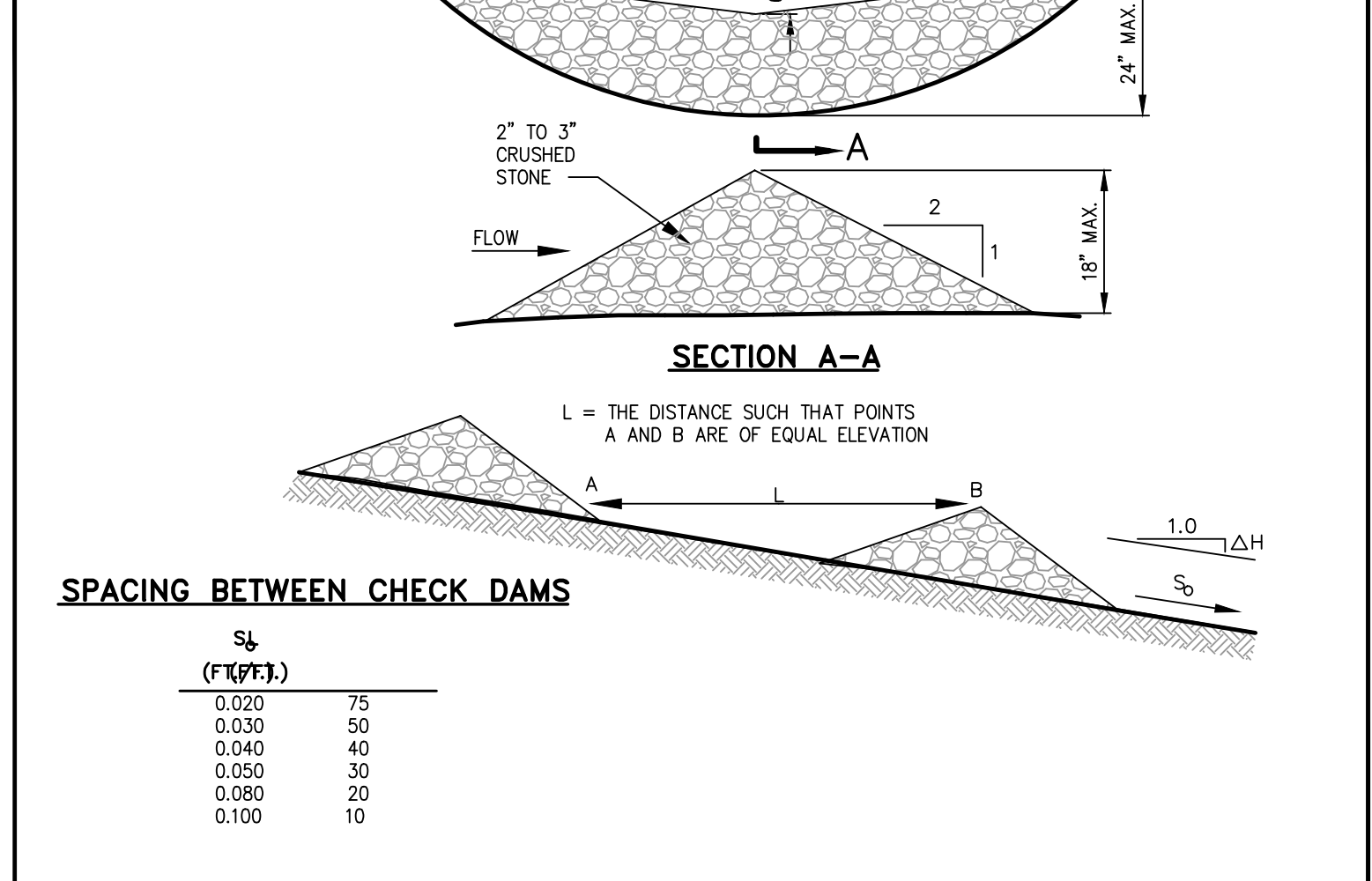
(E) SILT SACK® DETAIL AND SPECIFICATIONS
N.T.S.



(F) OIL SORBANT BOOM
N.T.S.

(TO BE SET IN ALL CATCH BASINS PRIOR TO PAVING)

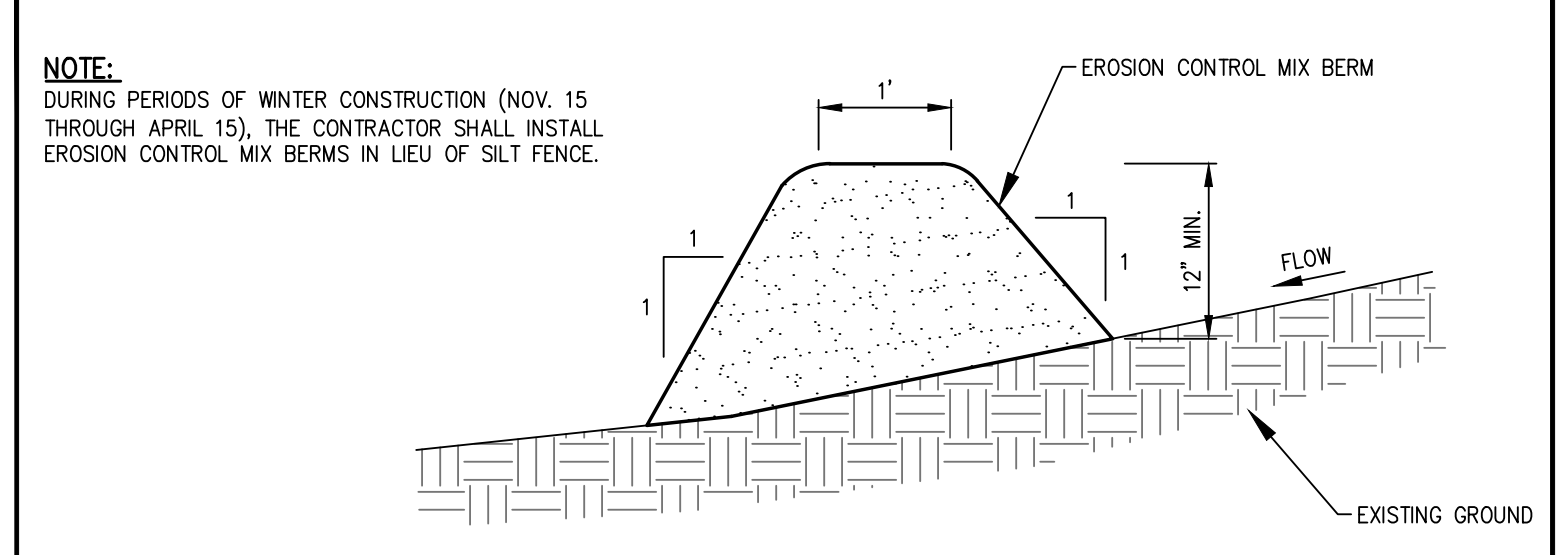
NOTE:
THIS DETAIL ILLUSTRATES THE "HULA BUG" BY ECO-TEC, INC. OR EQUIVALENT PRODUCTS ARE ACCEPTABLE.



STONE CHECK DAM
N.T.S.

SPACING BETWEEN CHECK DAMS

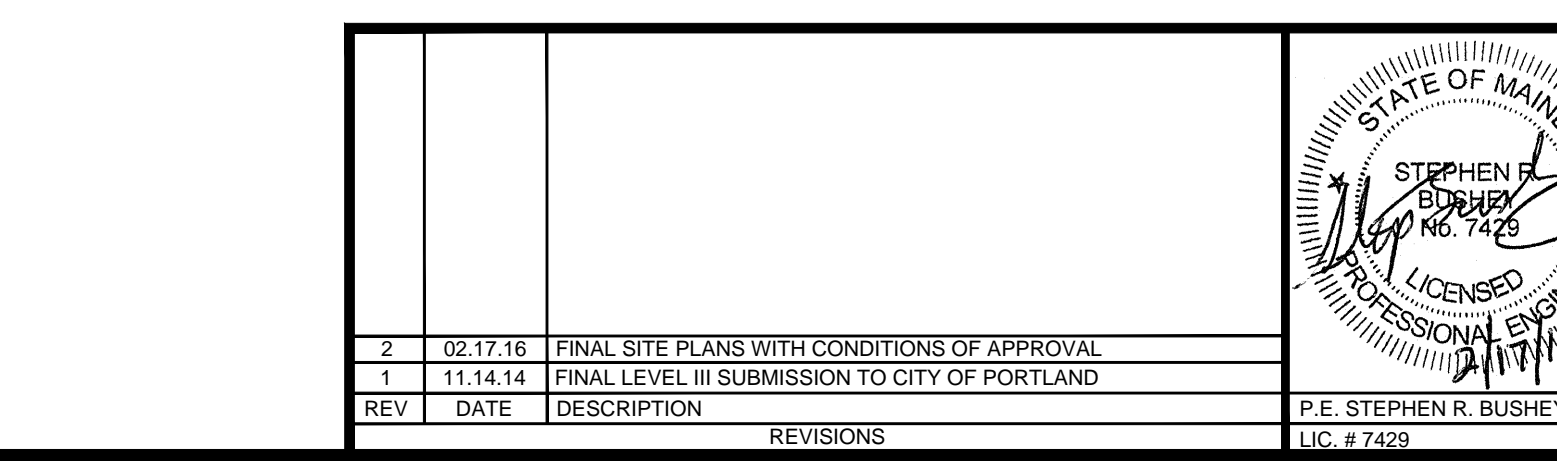
S _u (FT/FT)	S _d (FT/FT)
0.020	75
0.030	50
0.040	40
0.050	30
0.060	20
0.100	10



(H) EROSION CONTROL MIX BERM DETAIL
N.T.S.

NOTE:
DURING PERIODS OF WINTER CONSTRUCTION (NOV. 15 THROUGH APRIL 15), THE CONTRACTOR SHALL INSTALL EROSION CONTROL MIX BERMS IN LIEU OF SILT FENCE.

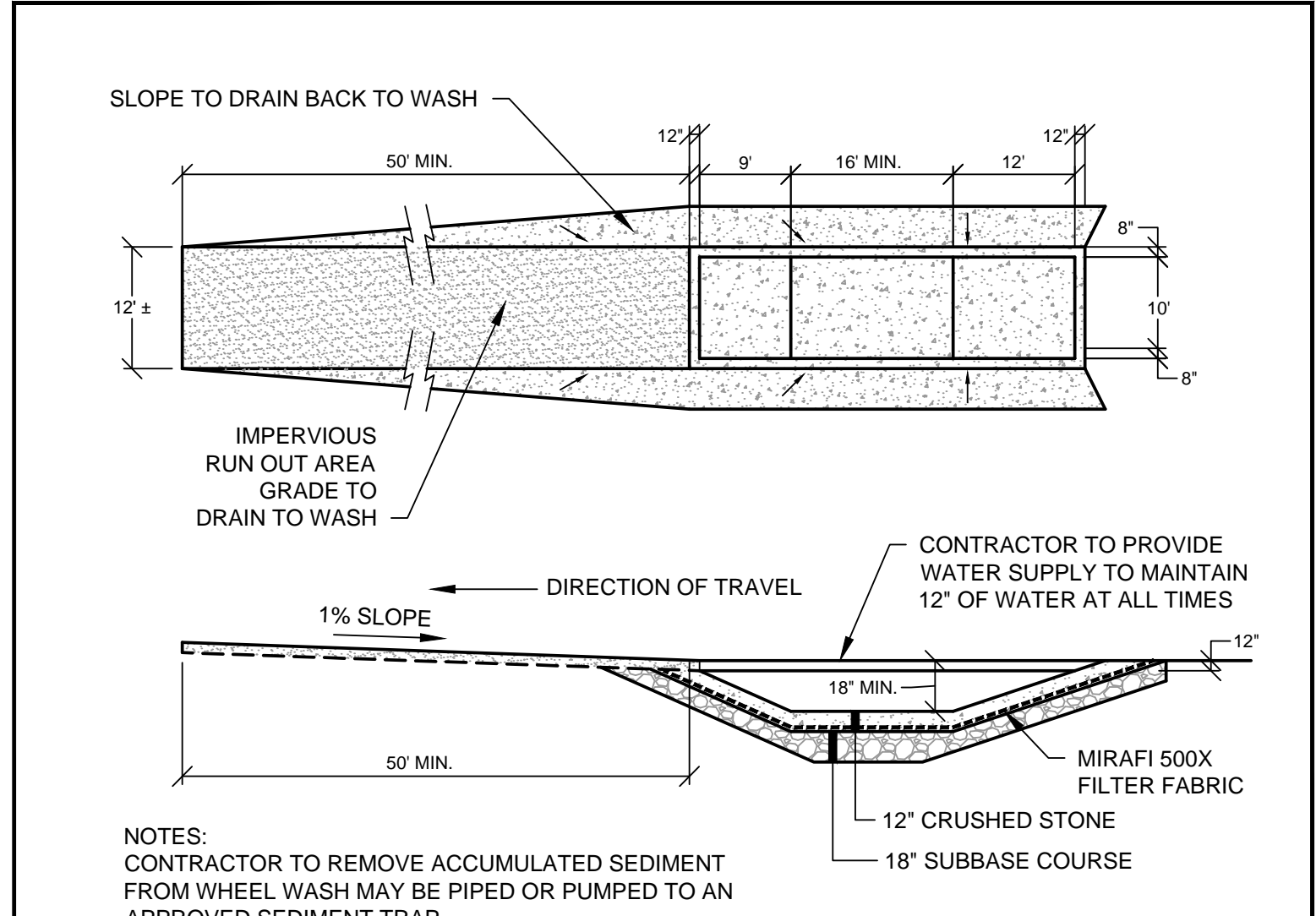
EROSION CONTROL MIX:
EROSION CONTROL MIX SHALL CONTAIN A WELL-GRADED MIXTURE OF PARTICLE SIZES & MAY CONTAIN ROCKS LESS THAN 4" IN DIAMETER. EROSION CONTROL MIX MUST BE FREE OF REFUSE, PHYSICAL CONTAMINANTS, AND MATERIAL TOXIC TO PLANT GROWTH. THE MIX COMPOSITION SHALL MEET THE FOLLOWING STANDARDS:
- THE ORGANIC MATTER CONTENT SHALL BE BETWEEN 80 AND 100%, DRY WEIGHT BASIS.
- PARTICLE SIZE BY WEIGHT SHALL BE 100% PASSING A 6" SCREEN AND A MINIMUM OF 70%, MAXIMUM OF 85%, PASSING A 0.75" SCREEN.
- THE ORGANIC PORTION NEEDS TO BE FIBROUS AND ELONGATED.
- LARGE PORTIONS OF SILTS, CLAYS OR FINE SANDS ARE NOT ACCEPTABLE IN THE MIX.
- SOLUBLE SALTS CONTENT SHALL BE < 4.0 mmhos/cm.
- PH SHALL FALL BETWEEN 5.0 AND 8.0.



(F) OIL SORBANT BOOM
N.T.S.

(TO BE SET IN ALL CATCH BASINS PRIOR TO PAVING)

NOTE:
THIS DETAIL ILLUSTRATES THE "HULA BUG" BY ECO-TEC, INC. OR EQUIVALENT PRODUCTS ARE ACCEPTABLE.

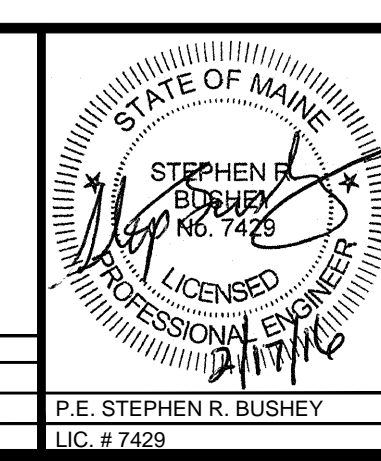


(I) WHEEL WASH
N.T.S.

NOTES:
CONTRACTOR TO REMOVE ACCUMULATED SEDIMENT FROM WHEEL WASH MAY BE PIPED OR PUMPED TO AN APPROVED SEDIMENT TRAP

PRELIMINARY - NOT FOR CONSTRUCTION

REV	DATE	DESCRIPTION	REVISIONS
2	02.17.16	FINAL SITE PLANS WITH CONDITIONS OF APPROVAL	
1	11.14.14	FINAL LEVEL III SUBMISSION TO CITY OF PORTLAND	



PROJECT	midtown PORTLAND, MAINE
SHEET TITLE	EROSION AND SEDIMENT CONTROL DETAILS
CLIENT	FEDQ DV001, LLC

FAY, SPOFFORD & THORNDIKE ENGINEERS • PLANNERS • SCIENTISTS 778 MAIN ST., SUITE 8, SOUTH PORTLAND, ME 04106 FORMERLY DELUCA-HOFFMAN ASSOCIATES	DRAWN: LA DESIGNED: BEK CHECKED: SRB FILE NAME: 3062-DET EROS SHEET: C-6.2	DATE: OCTOBER 2014 SCALE: N.T.S. JOB NO.: SP-M037B
--	--	--