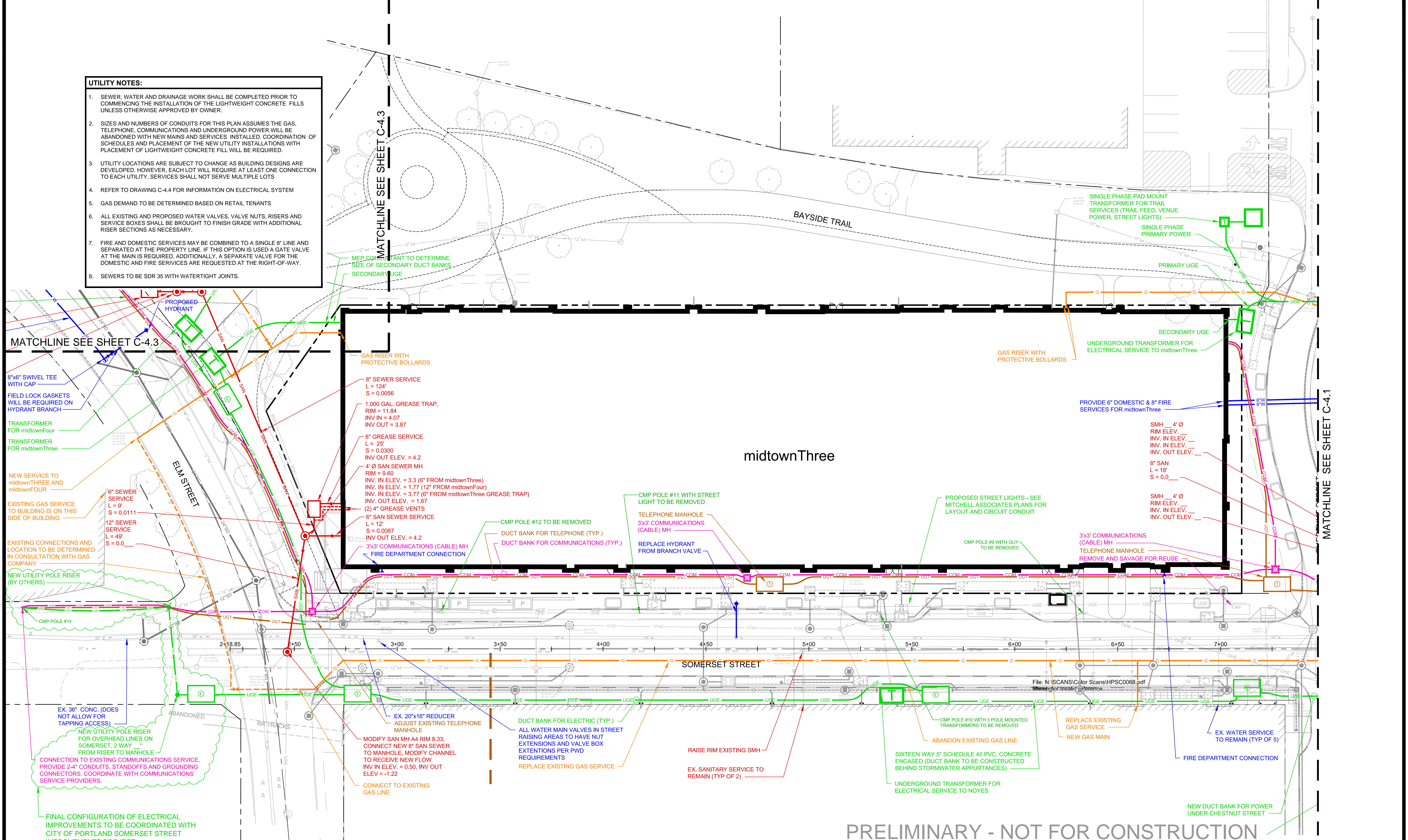
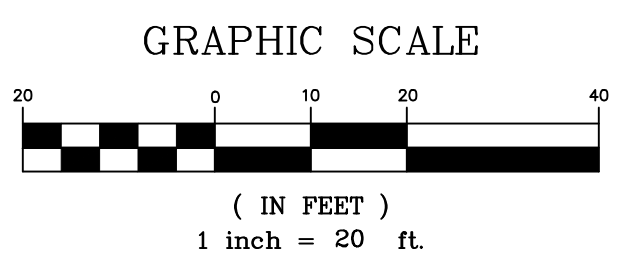


- UTILITY NOTES:**
- SEWER, WATER AND DRAINAGE WORK SHALL BE COMPLETED PRIOR TO COMMENCING THE INSTALLATION OF THE LIGHTWEIGHT CONCRETE FILLS UNLESS OTHERWISE APPROVED BY OWNER.
 - SIZES AND NUMBERS OF CONDUITS FOR THIS PLAN ASSUMES THE GAS, TELEPHONE, COMMUNICATIONS AND UNDERGROUND POWER WILL BE ABANDONED WITH NEW MAINS AND SERVICES INSTALLED. COORDINATION OF SCHEDULES AND PLACEMENT OF THE NEW UTILITY INSTALLATIONS WITH PLACEMENT OF LIGHTWEIGHT CONCRETE FILL WILL BE REQUIRED.
 - UTILITY LOCATIONS ARE SUBJECT TO CHANGE AS BUILDING DESIGNS ARE DEVELOPED, HOWEVER, EACH LOT WILL REQUIRE AT LEAST ONE CONNECTION TO EACH UTILITY. SERVICES SHALL NOT SERVE MULTIPLE LOTS
 - REFER TO DRAWING C-4.4 FOR INFORMATION ON ELECTRICAL SYSTEM
 - GAS DEMAND TO BE DETERMINED BASED ON RETAIL TENANTS
 - ALL EXISTING AND PROPOSED WATER VALVES, VALVE NUTS, RISERS AND SERVICE BOXES SHALL BE BROUGHT TO FINISH GRADE WITH ADDITIONAL RISER SECTIONS AS NECESSARY.
 - FIRE AND DOMESTIC SERVICES MAY BE COMBINED TO A SINGLE 8" LINE AND SEPARATED AT THE PROPERTY LINE. IF THIS OPTION IS USED A GATE VALVE AT THE MAIN IS REQUIRED. ADDITIONALLY, A SEPARATE VALVE FOR THE DOMESTIC AND FIRE SERVICES ARE REQUESTED AT THE RIGHT-OF-WAY.
 - SEWERS TO BE SDR 35 WITH WATERTIGHT JOINTS.

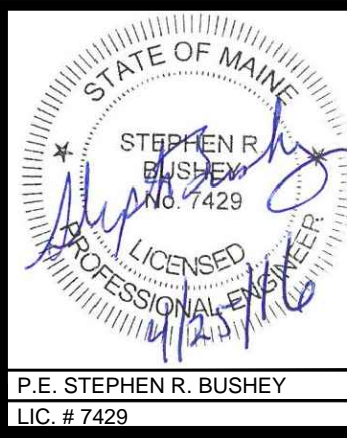


THIS DRAWING IS INTENDED TO BE PLOTTED AND VIEWED IN COLOR.
BLACK AND WHITE PLAN NOT SUITABLE FOR REVIEW



PRELIMINARY - NOT FOR CONSTRUCTION

REV	DATE	DESCRIPTION	REVISIONS
6	04.25.16	FINAL SITE PLANS WITH CONDITIONS OF APPROVAL	
5	02.17.16	FINAL SITE PLANS WITH CONDITIONS OF APPROVAL	
4	01.21.16	REVISED PER PWD COMMENT AND FIRE DEPT CONCURRENCE	
3	12.08.15	PROGRESS PLANS PER COORDINATION WITH BUILDING, MECHANICAL AND UTILITY COMPANIES	
2	01.21.15	REVISED PER PWD/CDP COMMENTS; SUBMITTED TO CITY	
1	11.14.14	FINAL LEVEL III SUBMISSION TO CITY OF PORTLAND	



PROJECT	midtown PORTLAND, MAINE
SHEET TITLE	UTILITY PLAN - midtownThree
CLIENT	FEDEQ DV001, LLC

FAY, SPOFFORD & THORNDIKE ENGINEERS • PLANNERS • SCIENTISTS 778 MAIN ST., SUITE 8, SOUTH PORTLAND, ME 04106 FORMERLY DELUCA-HOFFMAN ASSOCIATES	
DRAWN: LA	DATE: OCTOBER 2014
DESIGNED: BEK	SCALE: 1" = 20'
CHECKED: SRB	JOB NO. 195350127
FILE NAME: 3062-UTIL	
SHEET	C-4.2