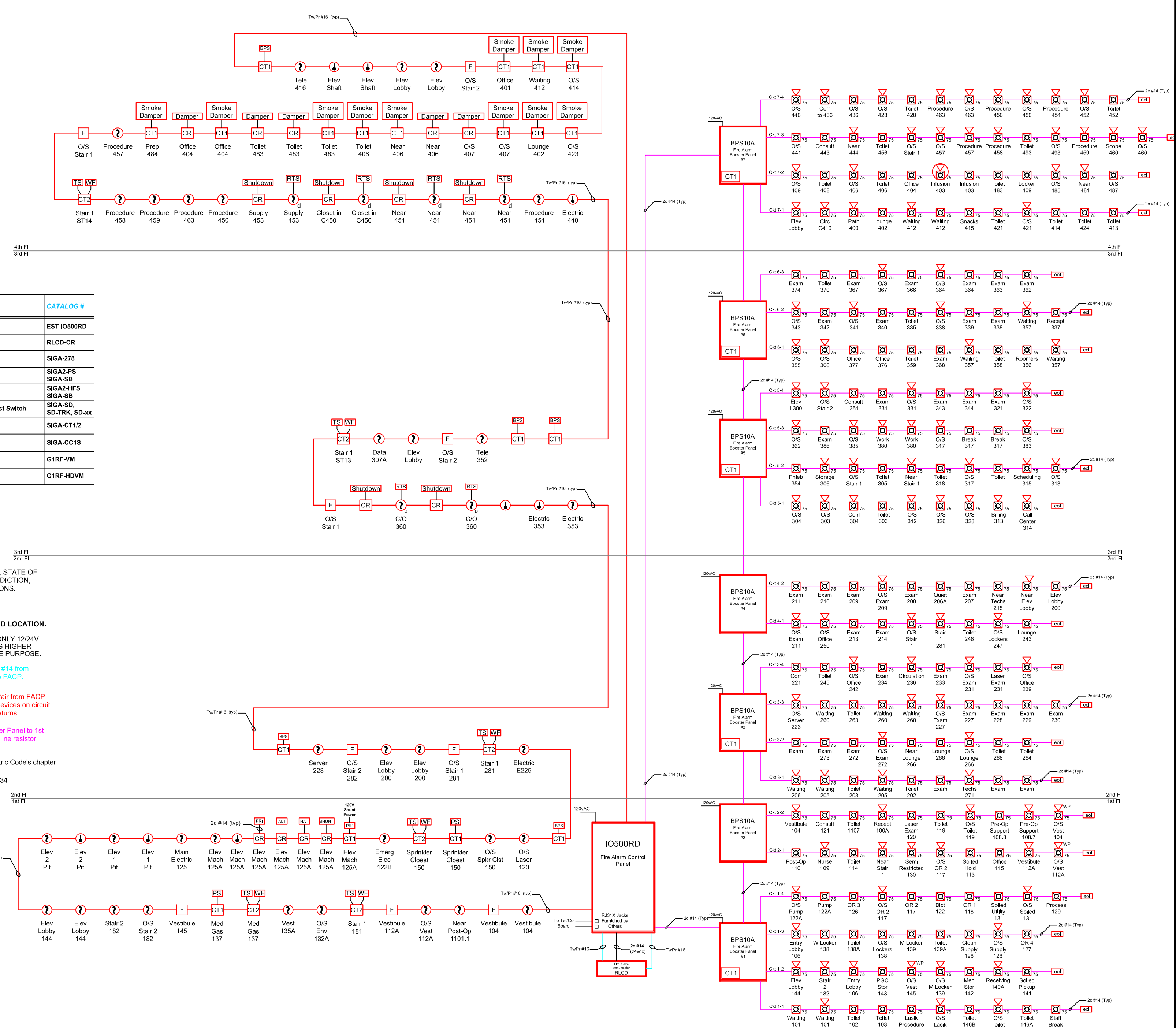




SCALE:	NTS	DATE	REV.	DESCRIPTION	TRD	KMB	DRWN:	R/W/D:
		8/16	0	Original Issue				



**LEGEND:**

RISER DIAG SYM	NFPA SYMBOL*	DESCRIPTION	CATALOG #
FACP	FACP	Fire Alarm Control Panel (existing)	EST IO500RD
FAA	FAA	Remote Annunciator (existing)	RLCD-CR
F	P	Addressable Manual Station	SIGA-278
?	?	Addressable Smoke Detector w/ Base	SIGA2-PS SIGA-SB
?	?	Addressable Heat Detector	SIGA2-HFS SIGA-SB
?	?	Addressable Duct Smoke Detector w/ Remote Test Switch	SIGA-SD, SD-TRK, SD-xx
CT1/2	CT1/2	Addressable Single/Dual Monitor Module	SIGA-CT1/2
CC1S	CC1S	Addressable Synchronization Module	SIGA-CC1S
?	?	Strobe Unit (Adjustable Candela)	G1RF-VM
?	?	Horn/Strobe Unit (Adjustable Candela)	G1RF-HDVM

\* NFPA 170 (2009)  
Tables: 6.5, 6.7.1, 6.7.2, & 6.7.3

- GENERAL NOTES:**
- ALL WIRING IN ACCORDANCE WITH NATIONAL ELECTRIC CODE, STATE OF MAINE BUILDING CODE (IBC), LOCAL AUTHORITY HAVING JURISDICTION, AND MANUFACTURER'S REQUIREMENTS AND RECOMMENDATIONS.
- WIRING NOTES:**
- ALL ADDRESSABLE DEVICES MUST BE INSTALLED IN A HEATED LOCATION.
  - ADDRESSABLE CONTROL RELAYS (CR or MCR) SHALL SWITCH ONLY 12/24V (AC / DC) @ 2.0 Amps OR LESS. SWITCHED CIRCUITS REQUIRING HIGHER VOLTAGE SHALL USE AN INTERMEDIATE RELAY LISTED FOR THE PURPOSE.
  - Network Data consists of: (1) Twisted NON-Shielded #16 Pair AND 2c #14 from FACP to Annunciator and (1) Twisted NON-Shielded #16 Pair return to FACP. Maintain proper separation between feeds and returns.
  - Addressable Loop (SLC) consists of: (1) Twisted NON-Shielded #16 Pair from FACP to 1st device, (1) Twisted NON-Shielded #16 Pair through remaining devices on circuit and return to FACP. Maintain proper separation between feeds and returns.
  - Horn/Strobe circuits consist of a minimum: 2c #14 from Remote Booster Panel to 1st device, 2c #14 through remaining devices on circuit and end at end of line resistor. Maintain proper separation between feeds and returns.
  - Fire alarm system shall be grounded in accordance with National Electric Code's chapter on grounding.
  - Please call Tim Biron with any questions regarding this job 207.939.2134