

Submittal

Job: 160004
Maine Eye
Maine Eye Care

Spec Section No: 084523
Submittal No: 1
Revision No: 0
Sent Date: 7/20/2016

Spec Section Title:

Submittal Title: Main Entrance Aluminum Canopy Design

REVIEWED & APPROVED
FOR

Contractor:

Hebert Construction LLC

- 1. Architect to select color
 - 2. lead time is 10 weeks upon return
 - 3. Structures Unlimited to recognize
- conduit note on page 2 of this submittal and
provide hole or allow for one.

Portland Design Team
Becca Casey

Contractor's Stamp

SUBMITTAL **084523.01**
SHIPMENT _____
FABRICATION _____
APPROVED AS NOTED _____
REVISED & RESUBMIT _____
NOT APPROVED _____
DATE **7/20/16** BY **TRH**
HEBERT CONSTRUCTION LLC

Architect's Stamp

Engineer's Stamp

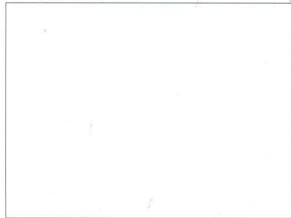
Since 1955
Kalwall[®]

CRF[™]

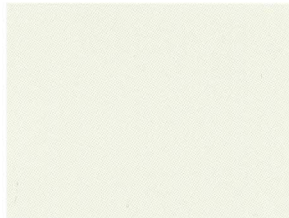
HIGH-PERFORMANCE ARCHITECTURAL COATINGS

Now With Fluoropolymer!

Standard Colors



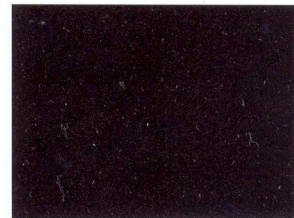
White #00



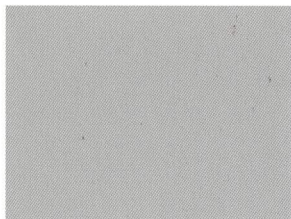
Bone White #21B



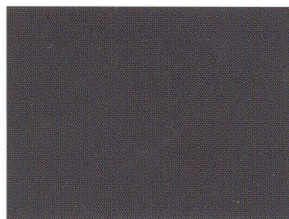
Aluminum #79



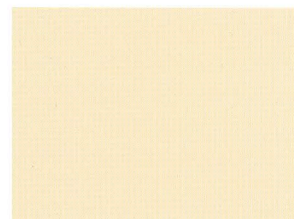
Black #95



Gray #80



Bronze #85



Minuette #03



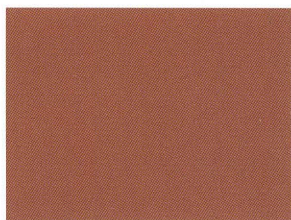
Blue #15



Coro Blue #48



Hartford Green #75



Brick #88



Banner Red #90



Mountain Green #70

Kalwall standard CRF colors are represented here and custom colors can be supplied. A Clear Top Coat is optional for additional protection against severe weathering and chemical exposure.

These color samples should be considered approximations of actual colors because of the limitations of color reproduction. Actual samples on aluminum substrate are available for final color consideration. Best viewed under natural daylight.

Kalwall CORPORATION

PO Box 237, Manchester, NH 03105 Phone 800-258-9777 or 603-627-3861 Fax 603-627-7905 www.kalwall.com

©2007 Kalwall Corporation