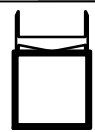



ANCHOR BOLT DIA	OFFSET "A"	SLOT WIDTH	SLOT LENGTH
5/8"	1/4"	3/4"	1 1/4"
3/4"	3/16"	7/8"	1 1/4"
1"	7/16"	1 1/8"	2"
1 1/4"	7/16"	1 3/8"	2 1/4"

12

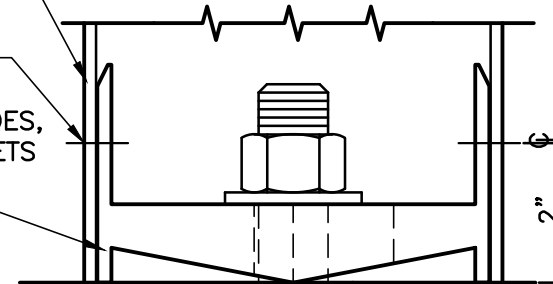
FIXTURE NAME		FIXTURE NAME	
6X6 BC JIG			
.DXF NAME		.DXF NAME	
8333X6X6		8333X2	
TOOLS REQ'D.		TOOLS REQ'D.	
M5A		M5A, L300	
WORK ZONE		WORK ZONE	
LOAD FILE	BASE CH WZ.CZ	LOAD FILE	STANDARD
PIECE OFFSET		PIECE OFFSET	
Y= 0.0313 Z= 0.2850		Y= 0.0 Z= -0.0	
GENERAL CONFIG.		GENERAL CONFIG.	
FIXED VISE	Y2	FIXED VISE	Y2

6" X 13" ALUM
BOX BEAM
800-332 & 369

"O" DRILL
BOX BEAM ONLY
6/ROW, BOTH SIDES,
FOR 110-12 RIVETS

6X13 ALUM
BASE CHANNEL
800-333

ANCHOR BOLT, FIELD
COAT
EMBEDDED BOLTS
W/PLASTIC
ROOF CEMENT



SECTION A-A

REV. NO.	DATE	TITLE	STANDARD NO.
12	02/28/14	6" X 13" BOX BEAM BASE CONN	803