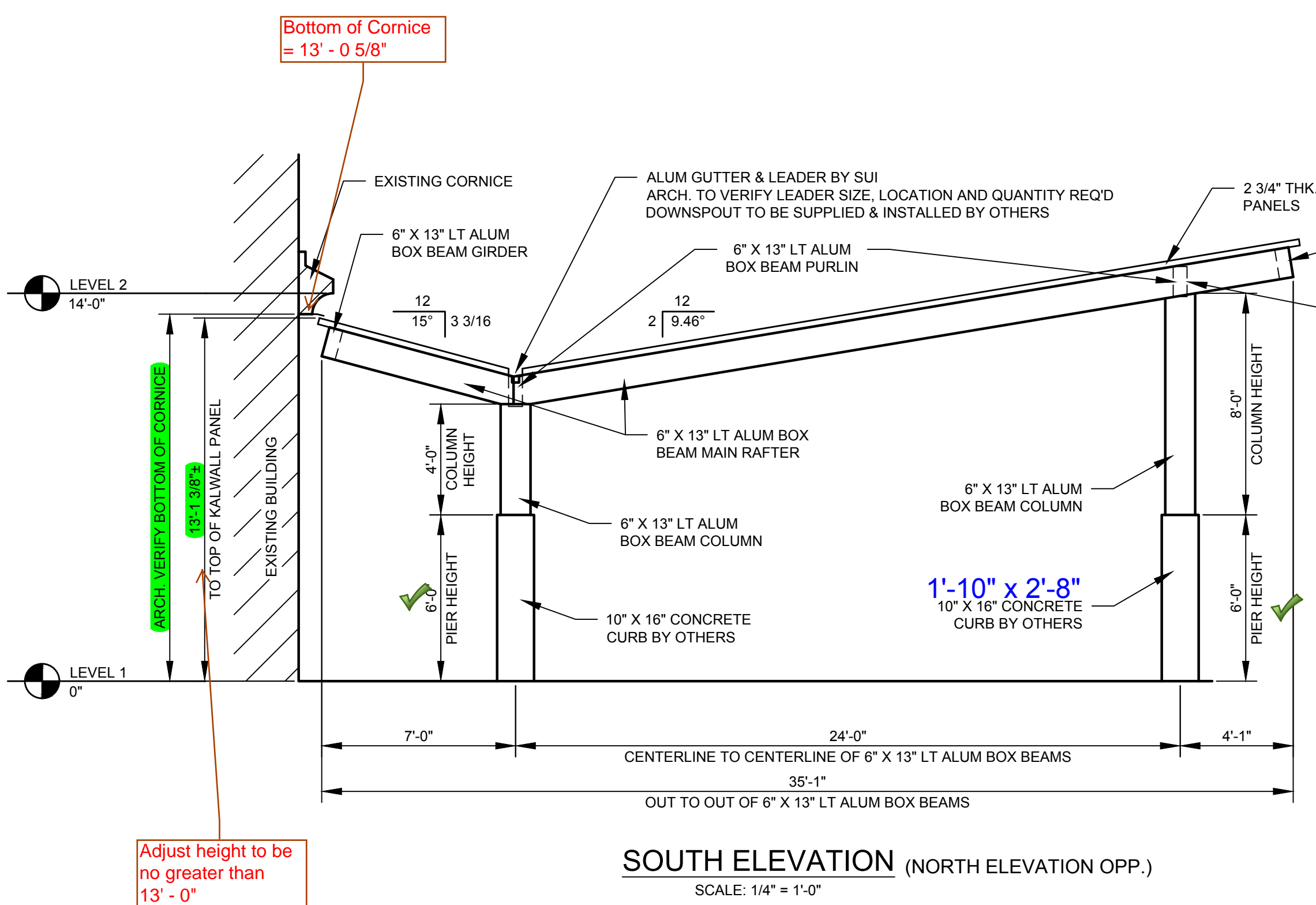
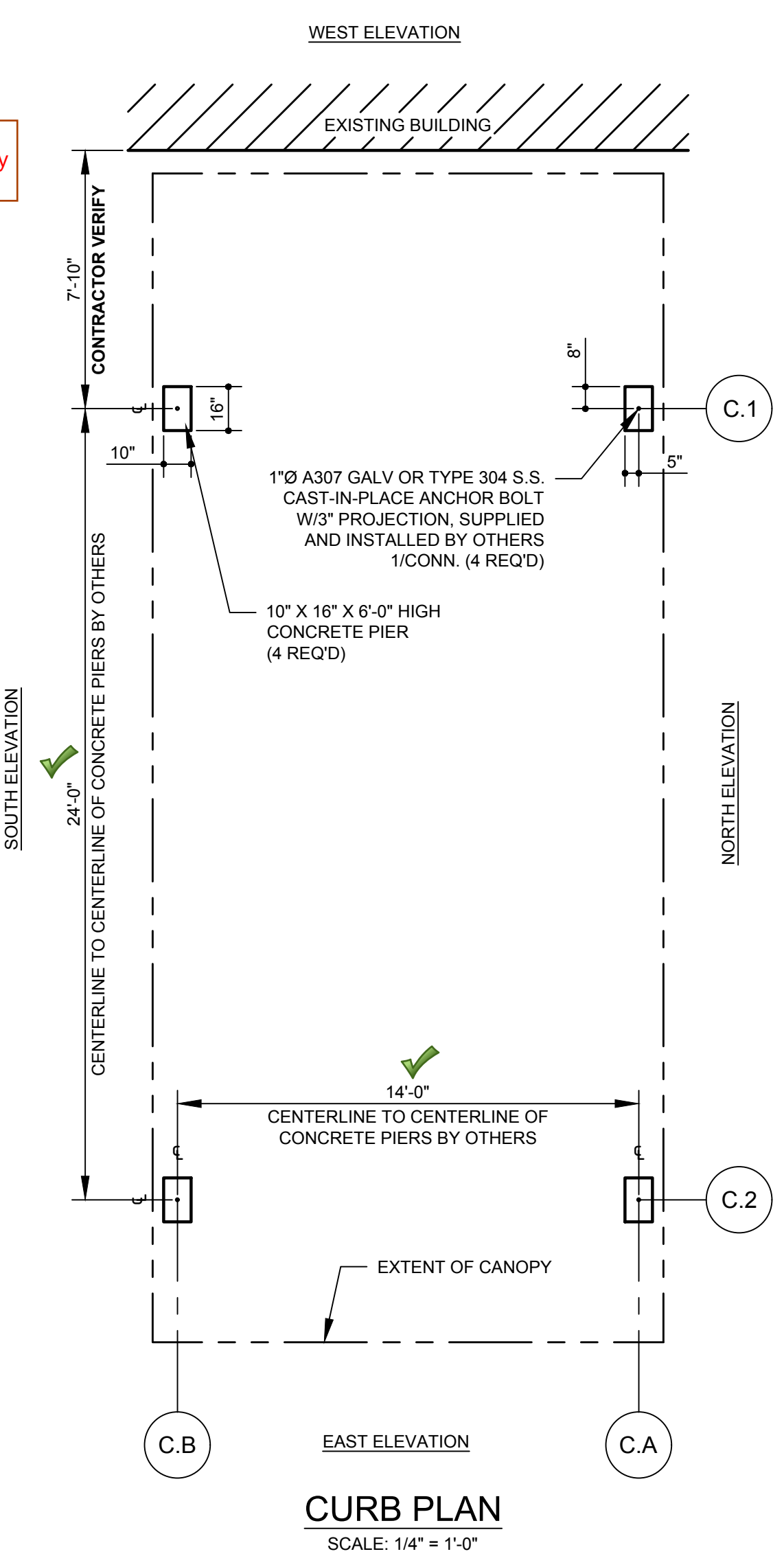
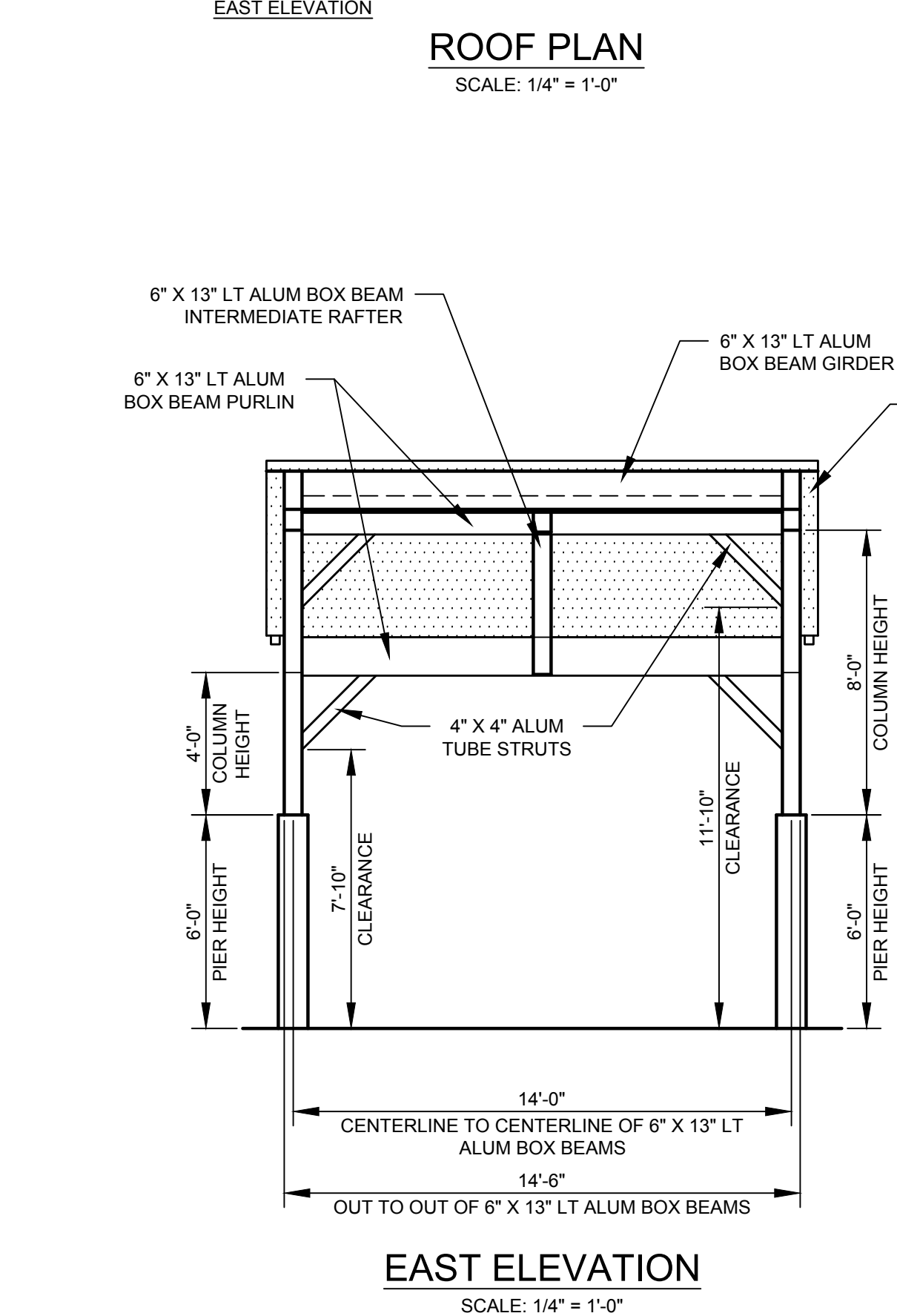
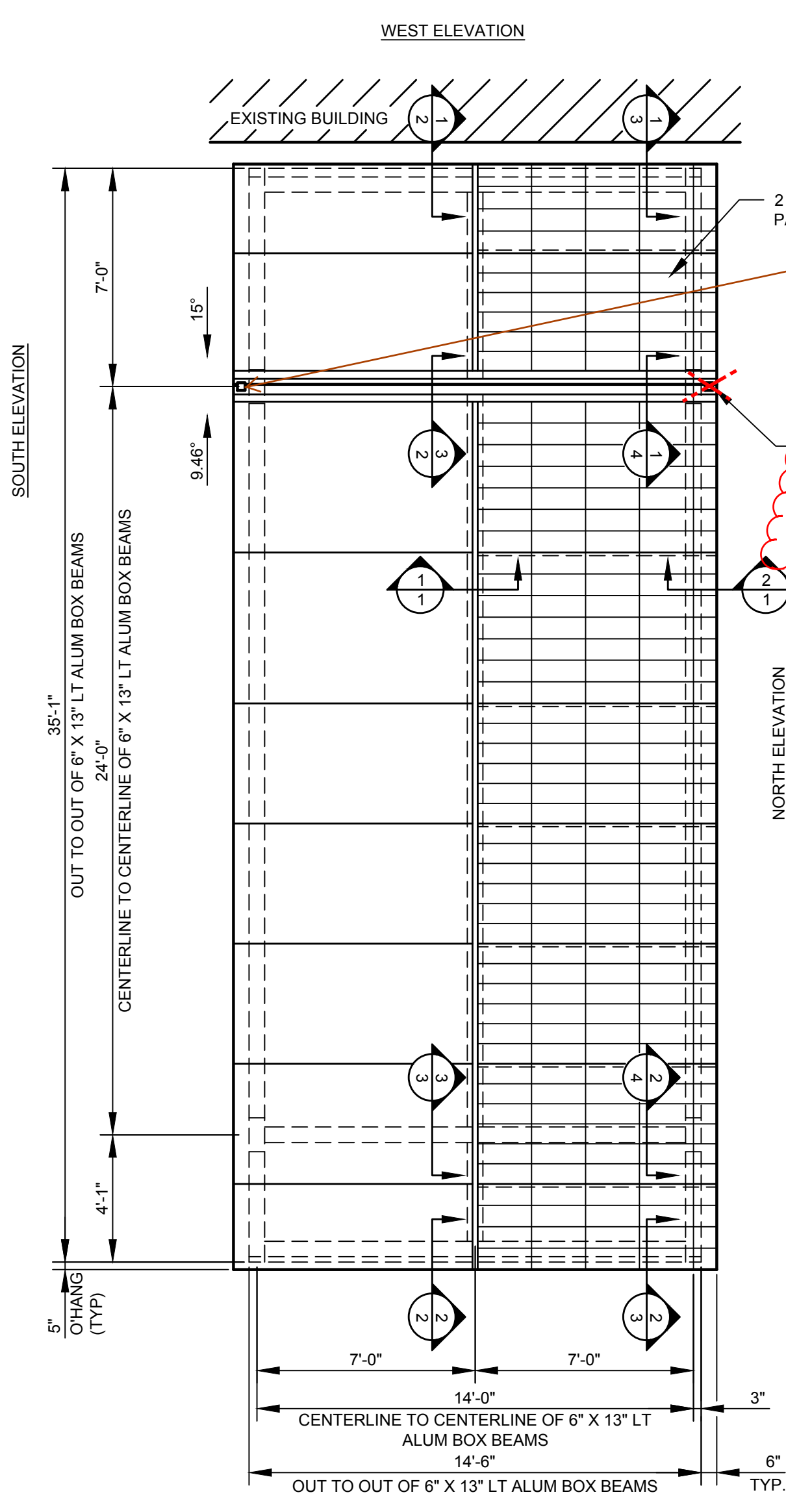


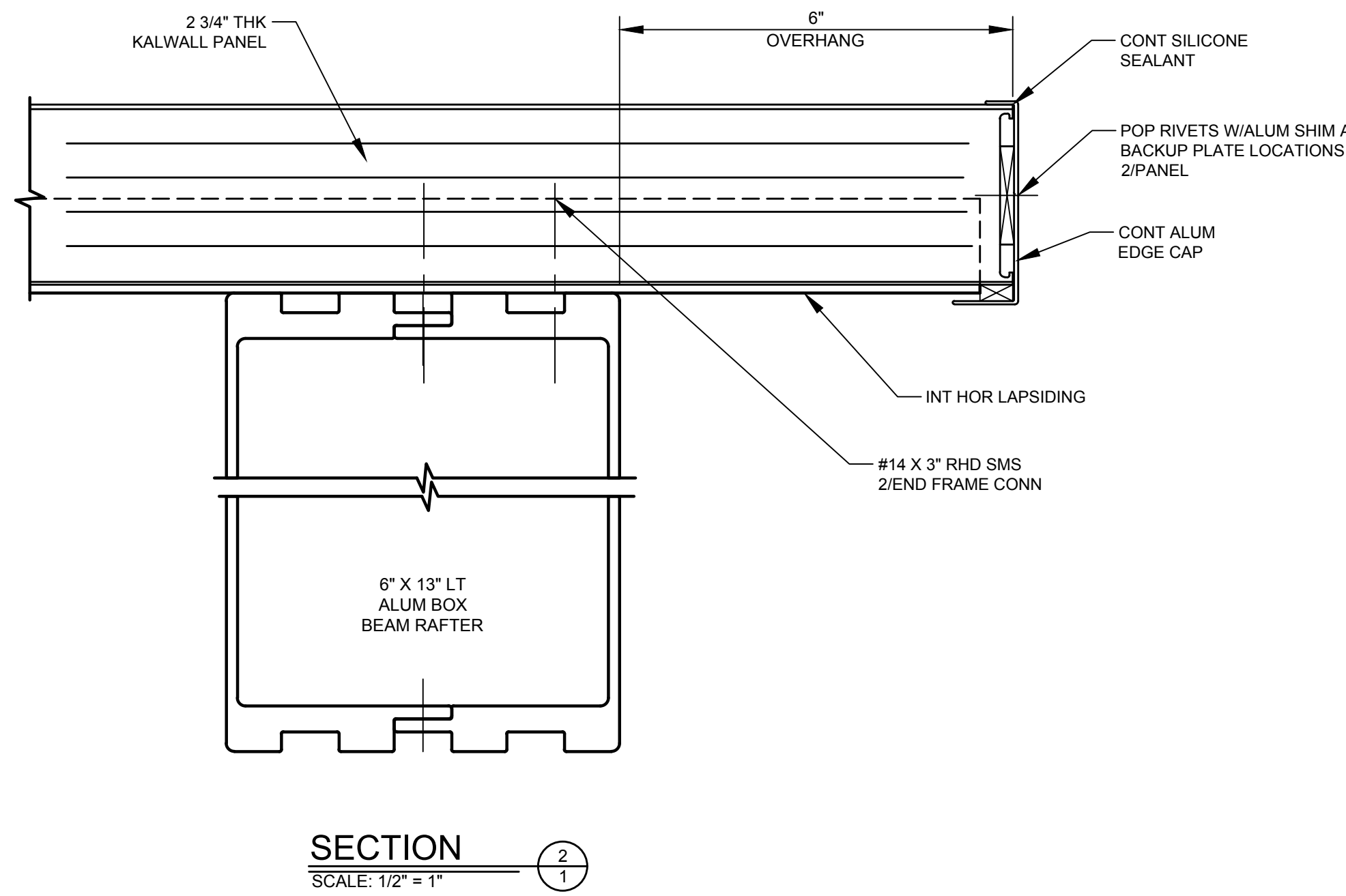
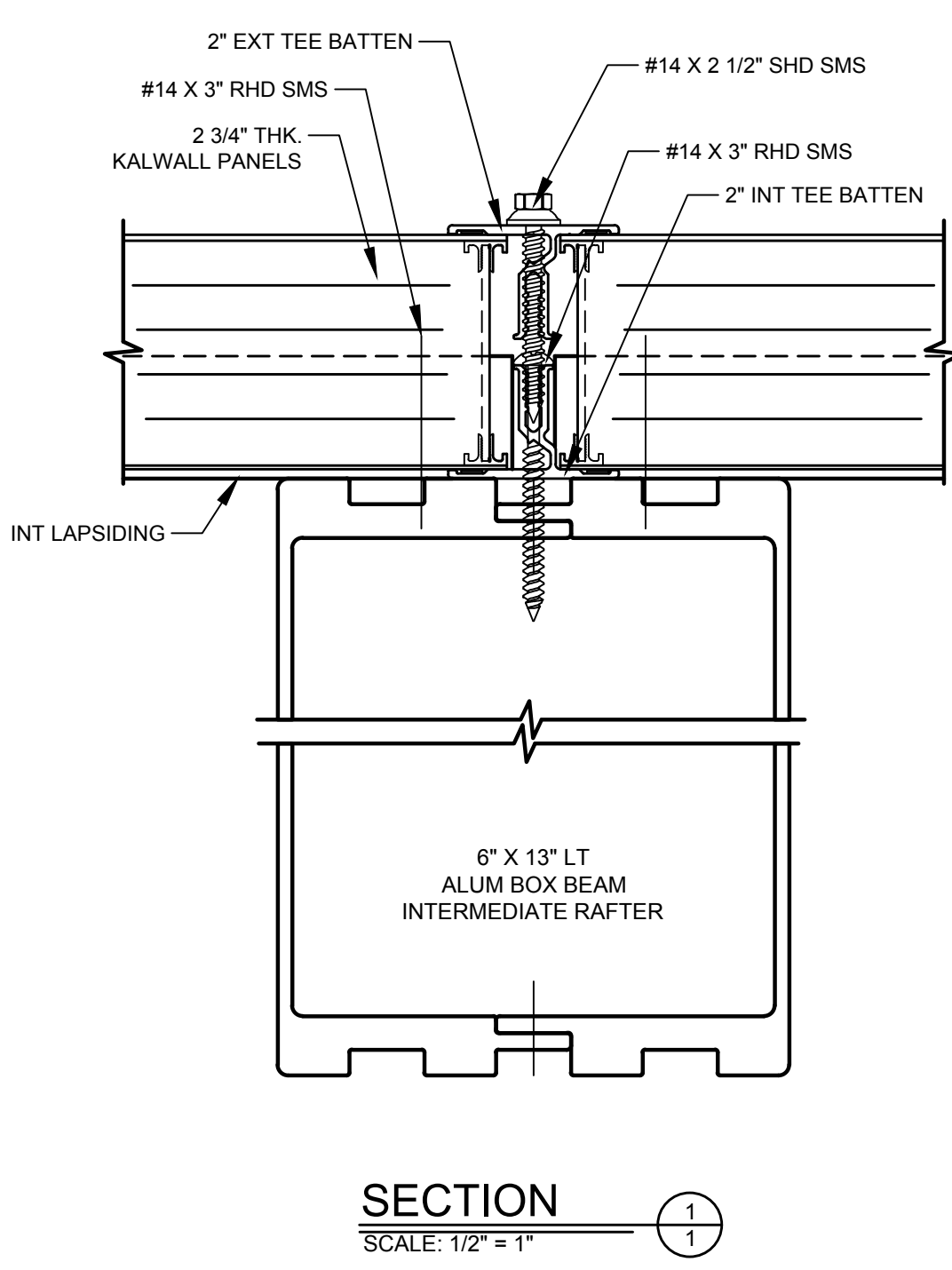
3/4" EMT conduit by electrical. Need to drill 1" hole through box beams to run power through to lights at these approximate locations. Structures Unlimited to drill holes or allow us the ability to do so. Provide limitations if any.

Architect to verify placement of lights prior to.



**THRUST NOTES:**

- HORIZONTAL SUPPORT REACTIONS = SEE SUPPORT DIAGRAMS
- VERTICAL SUPPORT REACTIONS = SEE SUPPORT DIAGRAMS
- DL = 4 PSF
- LLr = 20 PSF
- SL = 51 PSF (ROOF) + DRIFT  
DRIFT PROFILE: MAX SURCHARGE = 101.78 PSF TAPERING TO 0 PSF. Wd = 18.67' (Pg = 60 PSF, Ce = 1.0, Ct = 1.2, Is = 1.0)
- WL = 20 PSF (FACTORED: 2009 IBC / ASCE 7-05)  
(V = 100 MPH, EXPOSURE "C", OCCUPANCY CATEGORY II, Iw = 1.00)  
TROUGHED FREE ROOF WITH OBSTRUCTED WIND FLOW  
WORST-CASE ALUM. FRAMING (MWFRS): Cnw = -1.50, Cnl = -0.80  
Pmax(ALUM. FRAMES) = 20(0.85)(1.50) = 25.50 PSF OUTWARD COMPONENTS AND CLADDING (KALWALL PANELS):  
ZONE 2: Cn = +0.80 AND -2.24, G = 0.85  
Pmax(KALWALL PANEL) = 20(0.85)(2.24) = 38.08 PSF (OUTWARD)
- SUGGESTED DETAILS ONLY! CURB TO BE DESIGNED BY OTHERS TO RESIST BOTH HORIZONTAL AND VERTICAL THRUSTS.



**ARCH./G.C. NOTE:**

- PLEASE SUPPLY OR VERIFY DIMENSIONS AS INDICATED. FAILURE TO VERIFY REQUESTED DIMENSIONS OR FAILURE TO PROVIDE PERTINENT INFORMATION COULD RESULT IN FABRICATION DELAYS AND/OR ERRORS.

**NOTICE:**

- Do Not Expose Panels To Fire Or Temperatures Over 650°F.
- Do Not Penetrate And/Or Drill Into the Translucent Sandwich Panel Or Aluminum Box Beam Superstructure.

**GENERAL NOTES:**

- ALL EXPOSED INTERIOR ALUMINUM TO HAVE A CORROSION RESISTANT FINISH TO BE SELECTED.
- ALL EXPOSED EXTERIOR ALUMINUM TO HAVE A CORROSION RESISTANT FINISH TO BE SELECTED.

**PANEL NOTES:**

- 2 3/4" THK. KALWALL PANELS
- EXTERIOR SKIN - .070 CRYSTAL TYPE A
- INTERIOR SKIN - .045 WHITE TYPE A
- 8" X 20" NOMINAL SHOJI GRID W/DOUBLE "I" BEAM PERIMETER
- .53TB "U" FACTOR NFRC-100

**REVISION:**

**Structures Unlimited, Inc.**  
166 RIVER ROAD, BOW, NH 03304 | TEL. (603) 645-6539  
www.structuresunlimitedinc.com

**PROJECT:** MAINE EYE CENTER / PORTLAND GASTRO CENTER  
**LOCATION:** PORTLAND, ME  
**ARCHITECT:** PDT ARCHITECTS

DRAWN BY	DATE
M/W	07/12/2016
CHKD. BY	DATE
DPL	07/19/2016

**FILE NAME:** 16025.dwg

**DWG. NO.:** S16-025

**SHEET 1 OF 4**

**SHOP**