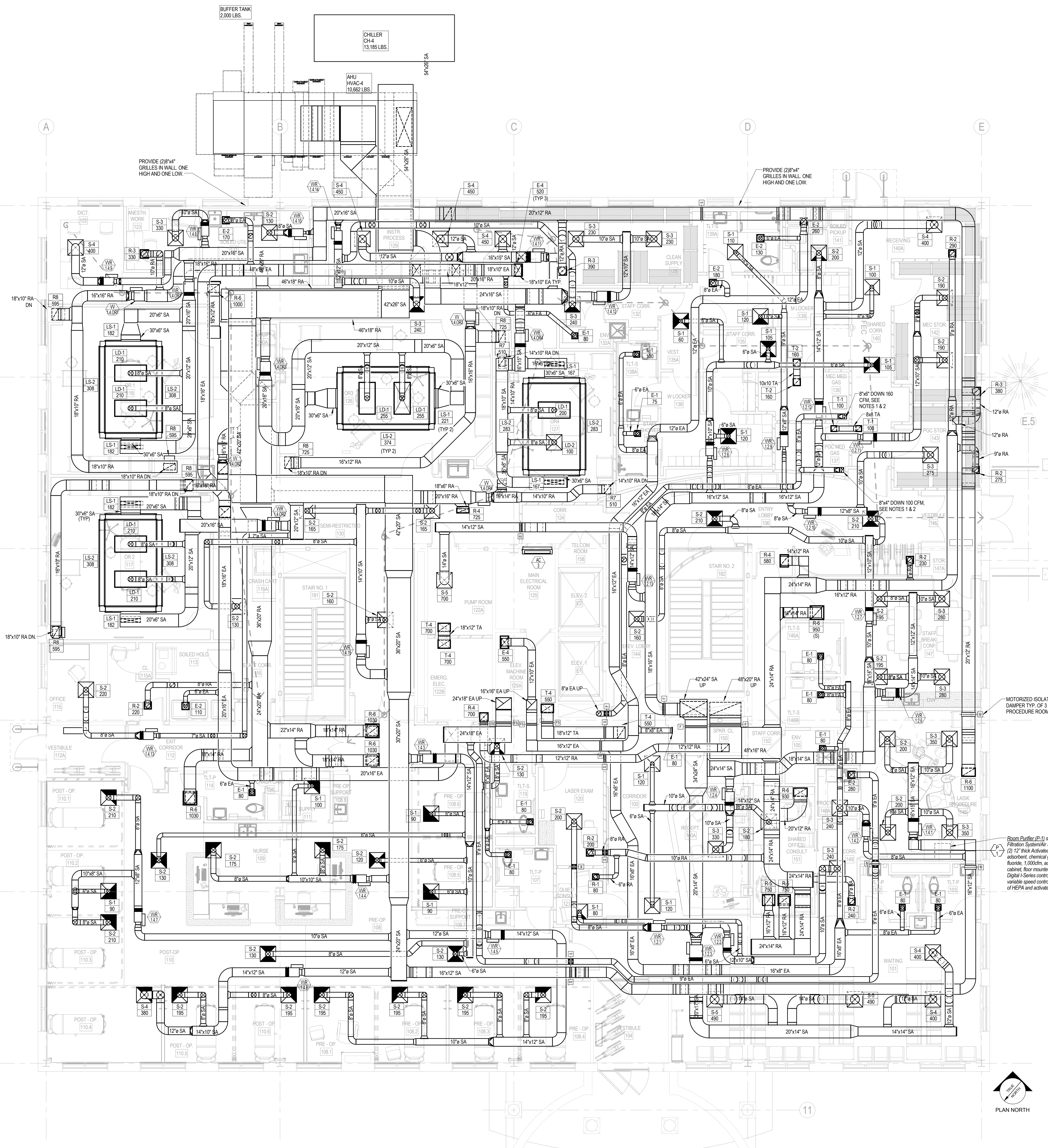


NOTES:

1. TERMINATE EXHAUST DUCT 12" A.F.F. WITH 1/2"x1/2" GALVANIZED SCREEN, TYP. (2) PLACES
2. COORDINATE FINAL EXHAUST DROP LOCATION WITH MEDICAL GAS CYLINDER SUPPLIER.



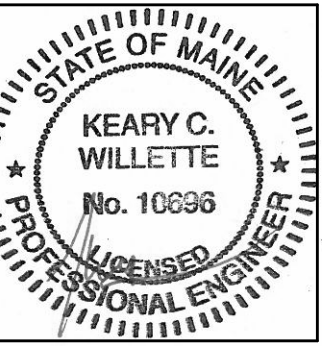
Room Purifier (P-1) shall be Quatro Air Technologies Model BP2000-SP-Loak Air Filtration System/Air Scrubber or approved equivalent with (1) 2" Thick HEPA Filter (2) 12" inch Activated Carbon Filter (FGS-SK-Loak) specially blended for gas phase adsorbent, chemical gas filter to remove unreacted fluorine as well as hydrogen fluoride, 1,000cfm, adjustable intake and discharge grille heavy gauge welded steel cabinet floor mounted, unducted, 120V/60Hz/4 amps, 350lbs, 17" x 24" x 26" Digital I-Series control panel with visual and audible alarm for filter change and variable speed control. Remote wall mounted on/off switch. Provide 2 complete sets of HEPA and activated carbon filters.

1 HVAC DUCTWORK LEVEL 1 NEW PLAN
 3/16" = 1'-0"



Stantec Consulting Services Inc.
 482 Payne Road Scarborough Court
 Scarborough, ME 04074-8929
 Tel: (207) 883-3355 / Fax: (207) 883-3376
 www.stantec.com

No.	Date	Description
		Revision Schedule



JOB NO.
195210863

DRWN: CHK
ERD KCW

SCALE:

ISSUE
PERMIT SET - 95%
CONSTRUCTION
DOCUMENTS
04.12.16

TITLE:
HVAC DUCTWORK
LEVEL 1 NEW PLAN

SHEET

M101