

GENERAL NOTES	
DESCRIPTIONS	
1. ALL SPRINKLER GENERAL NOTES, SYMBOLS LISTS & DETAILS ARE TO BE CONSIDERED AS APPLICABLE TO ALL SPRINKLER DRAWINGS FOR THIS PROJECT.	
2. THE DRAWINGS ARE DIAGRAMMATIC IN NATURE AND EXACT LOCATIONS AND ARRANGEMENTS OF EXIST NEW EQUIPMENT, DUCTWORK, PIPING AND OTHER COMPONENTS SHALL BE DETERMINED IN THE FIELD WITH DUE CONSIDERATION OF STRUCTURAL, ELECTRICAL AND ARCHITECTURAL SYSTEMS. EXISTING STRUCTURAL SYSTEMS SHALL NOT BE MODIFIED WITHOUT THE EXPRESS PERMISSION OF THE ENGINEER.	
3. THE PROJECT SHALL BE PHASED IN ACCORDANCE WITH THE APPROVED PHASING PLAN. THE CONTRACTOR SHALL OBTAIN APPROVAL FOR THE SEQUENCING AND TIMING OF OPERATIONS PRIOR TO COMMENCING WORK. SEE SPECIFICATIONS.	
4. CONTRACTOR IS TO MAINTAIN SERVICE TO ROOMS OUTSIDE THE PROJECT SCOPE OF WORK AND PHASING SCHEDULE.	
5. CARE SHALL BE TAKEN BY THE CONTRACTOR TO PROTECT EXISTING SYSTEMS AND SURFACES TO REMAIN. RESTORE DAMAGED AREAS THAT ARE BEYOND THE SCOPE OF THIS CONTRACT TO THEIR ORIGINAL CONDITION.	
6. WHERE INDICATED ON THE DRAWINGS, REMOVE OR RELOCATE EXISTING COMPONENTS AS REQUIRED TO ACCOMMODATE THE NEW WORK. REMOVALS SHALL INCLUDE ALL ASSOCIATED OFF-SITE DISPOSAL COSTS.	
7. COORDINATE REMOVALS AND RELOCATIONS INCLUDING SELECTIVE CUTTING AND PENETRATIONS WITH ARCHITECTURAL, MECHANICAL, STRUCTURAL AND ELECTRICAL CONTRACTORS.	
8. MOST PARTITIONS ARE FULL HEIGHT AND REQUIRE PENETRATIONS TO BE SEALED. SEE ARCHITECTURAL DWGS FOR PARTITION HEIGHTS. UTILITIES SHOWN FOR CLARITY THAT MAY RUN PARALLEL TO WALL PARTITIONS WILL REQUIRE LOCATING IN THE FIELD TO MINIMIZE CONFLICT WITH PARTITIONS.	
9. AT THE END OF EACH WORKING DAY, THE CONSTRUCTION SITE SHALL BE LEFT IN A CLEAN AND NEAT CONDITION.	
10. FIELD VERIFY EXISTING EQUIPMENT, DUCTWORK AND PIPING PRIOR TO REMOVAL OR REUSE. CONFIRM WITH HOSPITAL THAT ALL EQUIPMENT, DUCTWORK AND PIPING DESIGNATED TO BE REMOVED IS NO LONGER IN SERVICE PRIOR TO ITS REMOVAL.	
11. EXISTING EQUIPMENT, DUCTWORK AND PIPING TO REMAIN IN SERVICE SHALL BE INSPECTED. ANY EQUIPMENT FOUND TO BE INOPERABLE SHALL BE REPORTED TO PROJECT ENGINEER.	
12. FIRE PROTECTION SYSTEM AS SHOWN IS DIAGRAMMATIC AND FOR REFERENCE. DRAWINGS SHOW EXISTING PIPING MARK. CONTRACTOR MAY ALTER PIPING AND HEAD LOCATION WITH APPROVAL OF OWNER.	
13. FIRE PROTECTION CONTRACTOR SHALL ENSURE PROPOSED FIRE PROTECTION SYSTEM DESIGN MEETS ALL REQUIREMENTS OF NFPA-13 AND AUTHORITY HAVING JURISDICTION REQUIREMENTS.	
14. SPRINKLER SYSTEM SHALL BE HYDRAULICALLY DESIGNED BY SPRINKLER CONTRACTOR TO PROVIDE MINIMUM FLOW RATES AT HYDRAULICALLY MOST REMOTE AREA AS REQUIRED BY OWNER'S INSURANCE UNDERWRITER AND OWNER.	
15. THE CONTRACTOR SHALL BE RESPONSIBLE FOR PERFORMING A HYDRANT FLOW TEST TO OBTAIN CURRENT FLOW DATA FOR THEIR USE IN THE DESIGN. PROVIDE COPIES OF TEST RESULTS TO THE OWNER AND ENGINEER.	
16. SPRINKLER CRITERIA: WET SYSTEM PER NFPA-13 NFPA-101 LIFE SAFETY CODE INTERNATIONAL BUILDING CODE	

GENERAL NOTES	
DESCRIPTIONS	
17. REFER TO PERFORMANCE SPECIFICATIONS.	
18. SPRINKLER ZONES (INDICATION REQUIRED) SHALL MATCH BUILDING SMOKE ZONES.	
19. TAMPER SWITCHES ON SHUT-OFF VALVES SHALL REPORT "TROUBLE" SIGNAL TO FIRE ALARM PANEL.	
20. INSPECTION/TEST DRAIN ASSEMBLY SHALL BE PIPED TO GRADE. COORDINATE LOCATIONS WITH THE OWNER.	
21. ALL PIPE PENETRATIONS THRU FIRE RATED FLOOR/CEILING ASSEMBLY SHALL BE FIREPROOFED BY THE SPRINKLER CONTRACTOR AS REQUIRED TO MEET RATING.	
22. DO NOT ORDER SPRINKLER HEADS UNTIL APPROVAL IS RECEIVED FROM ARCHITECT FOR ALL AREAS AND APPLICATIONS. REFER TO ARCHITECTURAL PLANS, DETAILS, AND SPECIFICATIONS FOR COMPLETE BUILDING DEFINITION.	
23. MANUFACTURERS NAME & MODEL NUMBER ARE USED FOR DESCRIPTIVE PURPOSES ONLY & ARE INTENDED TO INDICATE THE STANDARD OF MATERIAL OR ARTICLES REQUIRED.	
24. INSTALL EQUIPMENT IN ACCORDANCE WITH THE MANUFACTURER'S RECOMMENDATIONS AND GOOD PRACTICE NORMAL TO THE TRADE. INSTALLATION SHALL INCLUDE PROVISIONS FOR ACCESS TO NORMAL MAINTENANCE ITEMS SUCH AS BELTS, BEARINGS, FILTERS AND MOTORS. PROVIDE ADEQUATE STRUCTURAL SUPPORTS AND SECURE MOUNTING METHODS WITH PROVISIONS FOR VIBRATION ISOLATION AND EXPANSION WHERE REQUIRED.	
25. INSTALLATION SHALL PERMIT ACCESSIBILITY FOR SERVICE AND/OR REPLACEMENT OF EQUIPMENT PROVIDED. PROVIDE ACCESS PANELS TO GAIN ACCESS TO SPRINKLER SYSTEMS COMPONENTS THAT REQUIRE MAINTENANCE ACCORDING TO MANUFACTURERS LITERATURE.	
26. PROVIDE CLAMPS, OFFSETS, EXPANSION JOINTS, ANCHORS & GUIDES AS NECESSARY TO PREVENT UNDU STRAIN ON PIPING.	
27. PIPING SHALL BE CONCEALED UNLESS OTHERWISE NOTED.	
28. SEE DETAILS & PIPING DIAGRAMS FOR ADDITIONAL VALVES & FITTINGS NECESSARY FOR COMPLETE PIPING SYSTEM.	
29. SPRINKLER CONTRACTOR TO COORDINATE ALL WORK WITH OTHER BUILDING TRADES. SOME RELOCATION OF EXISTING HEADS MAY BE NECESSARY TO ACCOMMODATE INSTALLATION OF NEW EQUIPMENT OR DUCTWORK. SPRINKLER HEADS ARE TO MAINTAIN EXISTING COVERAGE. SPRINKLER CONTRACTOR SHALL SUBMIT A COORDINATION DRAWING WITH PIPING ELEVATIONS SHOWN TO PREVENT CONSTRUCTION AND OPERATING INTERFERENCE.	
30. INFILL ALL NEW OR EXISTING ABANDONED FLOOR SLAB PENETRATIONS WITH GROUT. FULL THICKNESS OF SLAB. MAINTAIN 2 HR. FIRE RATING. ALL EXISTING CONCRETE FLOORS AND CHASES ARE 2 HOUR FIRE RATED.	
31. FILL AND PATCH ALL OPENINGS IN WALLS WHERE CONDUITS, PIPES, DUCTS ETC. ARE OR HAVE BEEN REMOVED WITH UL LISTED FIRE ASSEMBLY APPROVED BY THE ARCHITECT. MAINTAIN 2 HR FIRE RATING IF APPLICABLE.	
32. ALL UNUSED (ABANDONED) DUCTWORK, PIPING AND EQUIPMENT INDICATED TO BE REMOVED SHALL BE REMOVED AND CAPPED.	
33. TIE-IN POINT LOCATIONS ARE APPROXIMATE. CONTRACTOR SHALL DETERMINE EXACT LOCATIONS IN THE FIELD BASED ON EXISTING CONDITIONS.	
34. NO AREA SHALL BE LEFT IMPAIRED OF SPRINKLER PROTECTION AT ANY TIME EXCEPT FOR BRIEF PERIODS OF MODIFICATIONS.	
35. SPRINKLER CONTRACTOR SHALL PROVIDE STAMPED DRAWINGS AS REQUIRED BY STATE AND SPECIFICATIONS.	
36. LOCATE SPRINKLER HEADS IN CENTER OF CEILING TILES.	

GENERAL ABBREVIATIONS	
ABBREVIATIONS	DESCRIPTIONS
AFF	ABOVE FINISHED FLOOR
AP	ACCESS PANEL
ARCH	ARCHITECT
ATC	AUTOMATIC TEMPERATURE CONTROL
BS	BELOW SLAB (TYPE "X" COPPER)
C	CLOSED
C&H	COLD & HOT WATER
CAP	CAPACITY
CC	COOLING COIL
CFM	CUBIC FEET PER MINUTE
CO	CLEAN OUT
CONN	CONNECT
CONTR	CONTRACTOR
CP	CONTROL PANEL
CV	CONTROL VALVE
CW	COLD WATER
DDC	DIRECT DIGITAL CONTROL
DIA	DIAMETER
DN	DOWN
DO	DRAIN
DR	DRAWINGS
DWG OR DWGS	EXISTING
E, EX OR (E)	EACH
EL	ELECTRICAL CONTRACTOR
EXP	EXPANSION LOOP
ESP	EXTERNAL STATIC PRESSURE
ET	EXPANSION TANK
ETR	EXISTING TO BE RELOCATED
ETO	ETHYLENE OXIDE
ETX	EXISTING TO REMAIN
EUH	ELECTRICAL UNIT HEATER
FA	FREE AREA
FAP	FIRE ALARM PANEL
FC	FLEXIBLE CONNECTION
FCC	FLOOR CLEAN OUT
FD	FLOOR DRAIN
FDP	FLOOR DRAIN W/ TRAP PRIMER
FPBH	FREEZE PROOF HOSE BIBB
FFM	FEET PER MINUTE
FS	COMBINATION FIRE AND SMOKE DAMPER
FT	FEET
GAL	GALLONS
GC	GENERAL CONTRACTOR
GPM	GALLONS PER MINUTE
GV	GATE VALVE
H	HEIGHT
HP	HORSE POWER
HW	HOT WATER
HWR	HOT WATER RECIRCULATION
I.P.C	INTERNATIONAL PLUMBING CODE
ID	INSIDE DIAMETER
IN	INCHES
IR	INDIRECT WASTE
KW	KILOWATTS
L	LAVATORY
MBH	THOUSANDS OF B.T.U.'S PER HOUR
MTD	MOUNTED
N.C. OR NC	NORMALLY CLOSED
N.O. OR NO	NORMALLY OPEN
NFPA	NATIONAL FIRE PROTECTION ASSOCIATION
NIC	NOT IN CONTRACT
NTS	NOT TO SCALE
OD	OUTSIDE DIAMETER
PC	PLUMBING CONTRACTOR
PD	PRESSURE DROP
PSI	POUNDS PER SQUARE INCH
(R)	RELOCATED
RD	RAIN DRAIN
RM	ROOM
RV	RELIEF VALVE
RWL	RAIN WATER LEADER
S	SANITARY
SD	SANITARY DRAIN
SF	SQUARE FEET
SP	STATIC PRESSURE
SPD	SPEED
SS	STAINLESS STEEL
TOD	TOP OF DUCT
TYP	TYPICAL
UC	UNDERCUT DOOR
UL	UNDERWRITERS LABORATORY
V	VENT
VB	VACUUM BREAKER
VTR	VENT THROUGH ROOF
W	WASTE
W	WALL CLEANOUT
WH	WALL HEATER
WMS	WIRE MESH SCREEN

GENERAL SYMBOLS		
SYMBOLS	ABBREVIATIONS	DESCRIPTIONS
		POINT OF CONNECTION
		NOTE CALL OUT
		PRESSURE GAUGE W/ PETCOCK
		COLD & HOT WATER
		DUCT MOUNTED SMOKE DETECTOR, MTD BY HVAC CONTR. SUPPLIED AND WIRED BY ELECTRICAL CONTR.
		FLOW SWITCH
		PRESSURE SWITCH
		THERMOMETER IMMERSION WELL
	BFV	BUTTERFLY VALVE
	SCV	SWING CHECK VALVE
	GV	GATE VALVE
	GLV	GLOBE VALVE
	MCV	MANUAL CONTROL VALVE
	FLG	FLANGE
		STRAINER W/ DRAIN VALVE AND CAP
		DRAIN VALVE AND CAP
	PGV	PLUG VALVE
	BV	BALL VALVE
	CRD	CONCENTRIC REDUCER (ENLARGER)
	ERD	ECCENTRIC REDUCER (ENLARGER)
	RSV	RELIEF OR SAFETY VALVE
	LCV	LIFT CHECK VALVE
	12, 12x12	DUCT SIZE
	12"	PIPE SIZE (DIAMETER)
	12" S UP 14" D 1-1/2"	PIPE SIZE, GANG RISER (DIAMETER)

PIPING SYMBOLS		
SYMBOLS	ABBREVIATIONS	DESCRIPTIONS
	GS	GLYCOL SUPPLY
	SPR	WET SPRINKLER PIPING
	SPR	EXISTING SPRINKLER PIPING TO BE REMOVED
	FP	COMBINED FIRE PROTECTION PIPING
		PIPE DROP
		PIPE RISER
		PIPE TEE - DOWN
		PIPE TEE - UP
		PIPE CONNECTION
		PIPE BREAK - TO CONTINUE
		DIRECTION OF FLOW
		PIPE SLOPE

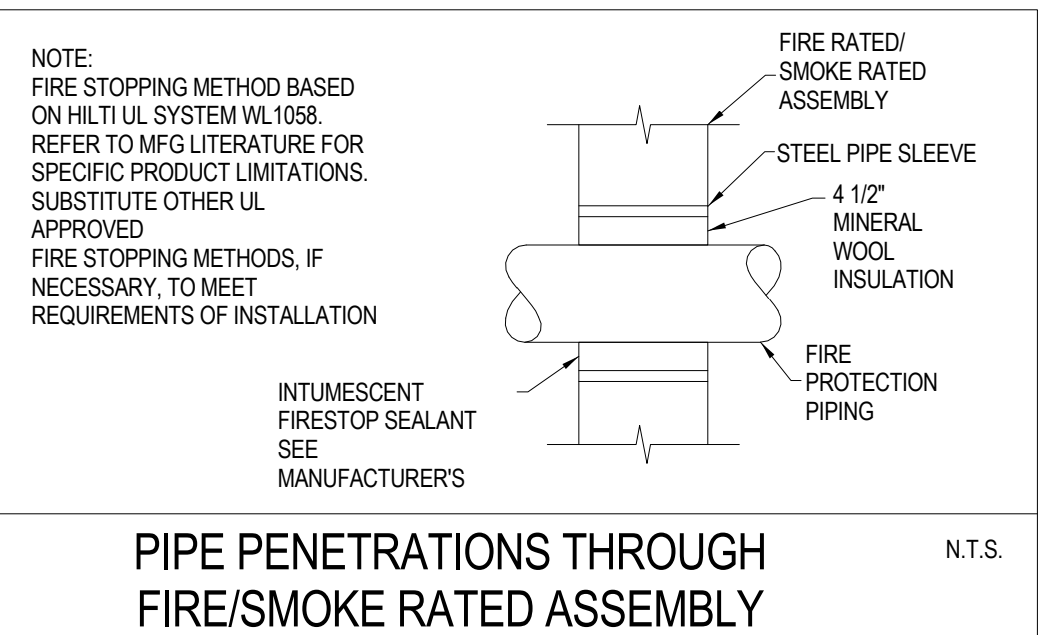
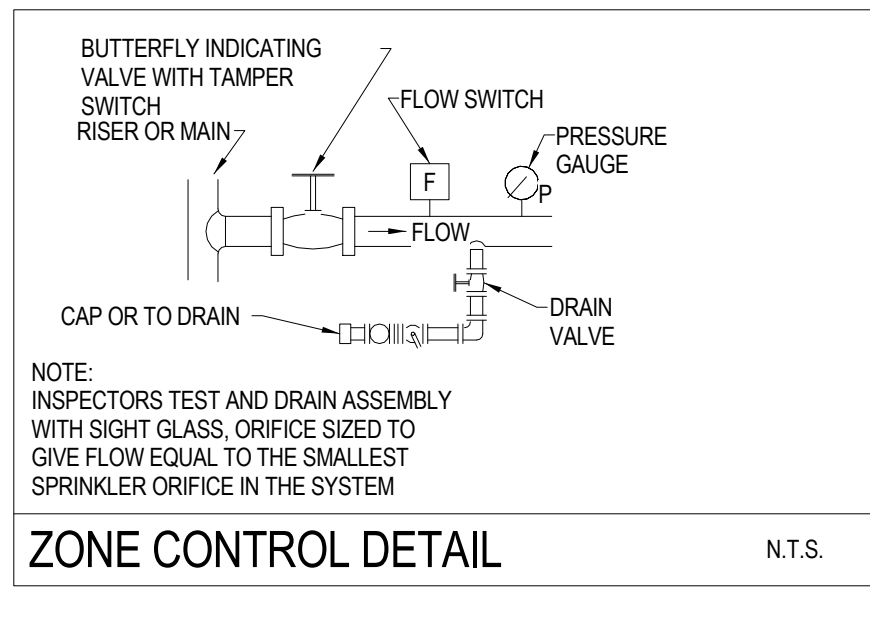
FIRE PROTECTION SYMBOLS		
SYMBOLS	ABBREVIATIONS	DESCRIPTIONS
		MAIN LINE SERVING SPRINKLER HEAD
	FDC	FIRE DEPARTMENT CONNECTION
	FDV	FIRE DEPARTMENT VALVE
	(XX)	HYDRAULIC REFERENCE NODE
		PENDANT CEILING SPRINKLER HEAD
		UPRIGHT PENDANT SPRINKLER HEAD
		SIDEWALL SPRINKLER HEAD

DEMOLITION DRAWING SPRINKLER HEAD SYMBOLS		
SYMBOLS	ABBREVIATIONS	DESCRIPTIONS
		SPRINKLER HEAD TO REMAIN
		SPRINKLER HEAD TO BE REMOVED

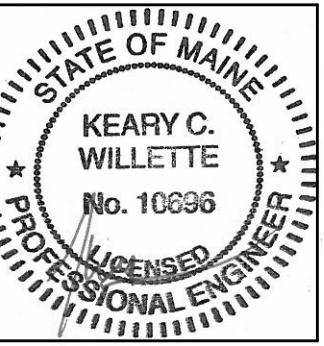
NEW DRAWING SPRINKLER HEAD SYMBOLS		
SYMBOLS	ABBREVIATIONS	DESCRIPTIONS
		EXISTING SPRINKLER HEAD
		NEW SPRINKLER HEAD

NEW SPRINKLER SCHEDULE									
SYMBOL	STYLE	LOCATION	ORIFICE SIZE	K FACTOR	TEMPERATURE RATING	SPRINKLER FINISH	ESCUTCHEON OR PLATE FINISH	COATING	REMARKS
NOTE 1	SEM-RECESSED CL.G. PENDANT	AREAS W/ CEILING	NOTE 1	NOTE 1	NOTE 1	CHROME	CHROME	-	QUICK RESPONSE HEADS
NOTE 1	UPRIGHT	AREAS W/O CEILING	NOTE 1	NOTE 1	NOTE 1	CHROME	CHROME	-	QUICK RESPONSE HEADS
NOTE 1	CONCEALED	OPERATING ROOM SUITE	NOTE 1	NOTE 1	NOTE 1	CHROME	CHROME	-	QUICK RESPONSE HEADS

1. TO BE DETERMINED BY SPRINKLER CONTRACTOR



No.	Date	Description
		Revision Schedule



JOB NO. 195210863

DRWN: CHK.
ERD KCW

SCALE:

ISSUE PERMIT SET - 95% CONSTRUCTION DOCUMENTS
04.12.16

TITLE:
FIRE PROTECTION LEGEND AND GENERAL NOTES

SHEET
F001



Stantec Consulting Services Inc.
482 Foyne Road Scarborough Court
Scarborough, ME 04074-8929
Tel: (207) 883-3355 / Fax: (207) 883-3376
www.stantec.com