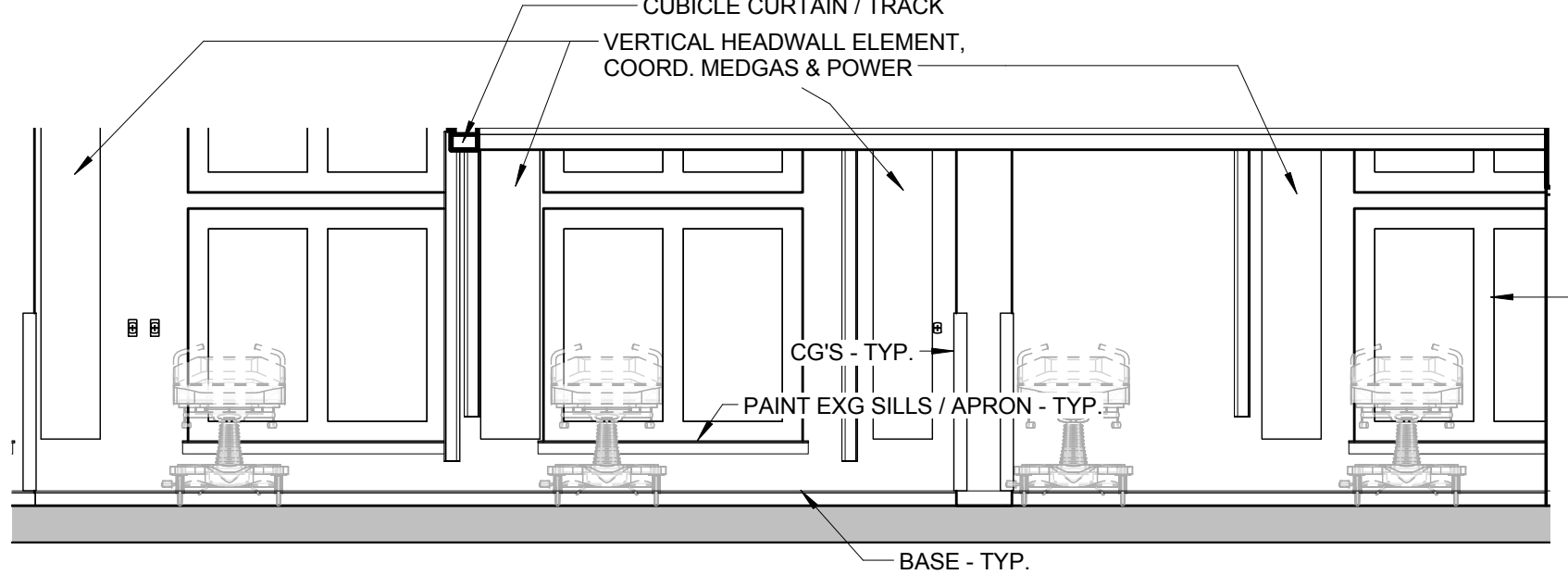


INTERIOR GENERAL NOTES

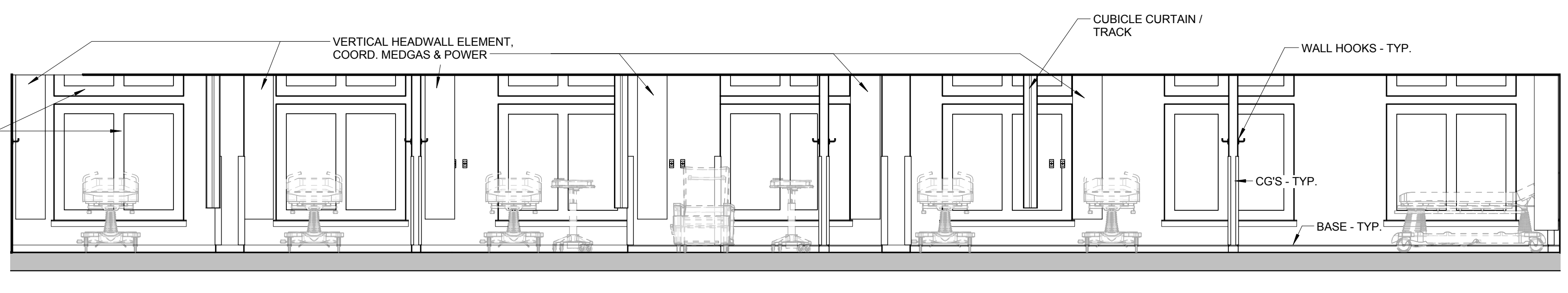
- ALL CABINETS IN CLINICAL AREAS SHALL HAVE LOCKS
- COUNTERTOPS AND WET AREAS TO BE PLAM TYPICAL, U.N.O SEE NOTE BELOW.
- COUNTERTOPS IN WET AREAS, OR CONTAINING SINKS WILL BE SOLID SURFACE.
- EQUIPMENT AND FURNITURE NOT INCLUDED IN PROJECT SCOPE SHOWN DASHED AND HALF-TONE, FOR REFERENCE ONLY.
- EXTEND ALL FLOORING BENEATH ALL CABINET ASSEMBLIES.
- REFER TO ELECTRICAL PLANS FOR UNDERCOUNTER LIGHTING.
- INSTALL BLOCKING BEHIND ALL SURFACE-APPLIED FIXTURES, TRIM, GRAB BARS, TP/TISSUE DISPENSERS, SHELVES, CRASH RAILS, BASE MOLDINGS, TACK OR MARKER BOARDS, WINDOW TREATMENT, WALL OR BASE CABINETS OR COUNTERS, AND MISCELLANEOUS ACCESSORIES MOUNT ON STUD WALLS.
- SEE A002 FOR TYPICAL MOUNTING HEIGHTS AND PLANS OF TOILET ROOMS, FIXTURES, AND ACCESSORIES
- CONTRACTOR SHALL INSTALL OWNER SUPPLIED ITEMS INCLUDING, BUT NOT LIMITED TO:
 - BATHROOM ACCESSORIES:
 - SOAP DISPENSERS
 - PAPER TOWEL DISPENSERS
 - TOILET PAPER DISPENSERS
 - HAND SANITIZER DISPENSERS
 - SHARPS CONTAINERS
 - GLOVE BOX HOLDERS / DISPENSERS
 - OTHER WALL MTD. ACCESSORIES:
 - HAND SANITIZER DISPENSERS
 - SHARPS CONTAINERS
 - GLOVE BOX HOLDERS / DISPENSERS
- APPLIANCES:
 - REFRIGERATORS
 - DISHWASHERS
 - TACK BOARDS
 - WHITE BOARDS
 - TELEVISION MONITORS
 - SUPPORT BRACKETS

NOTE: VERIFY QUANTITY AND LOCATIONS IN FIELD WITH OWNER.

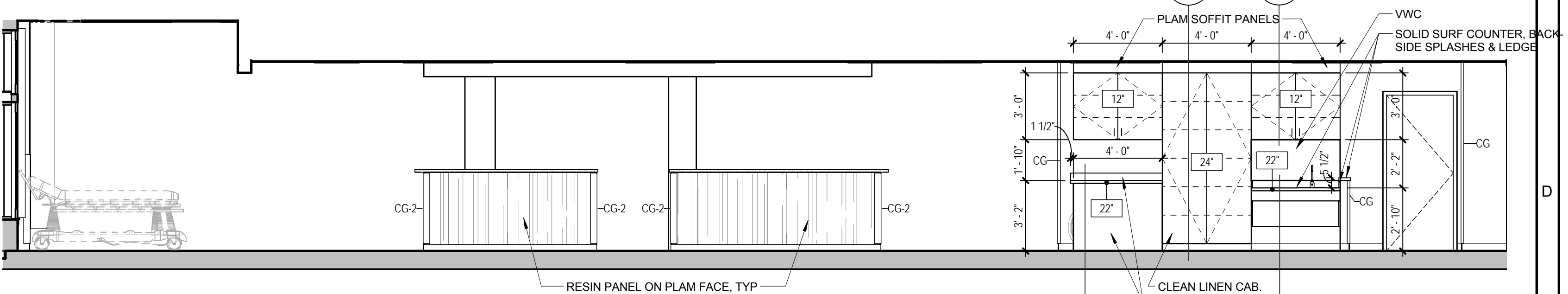
14" CASEWORK DEPTH TAG APPLIES TO COUNTERS WHERE THERE IS NO CASEWORK



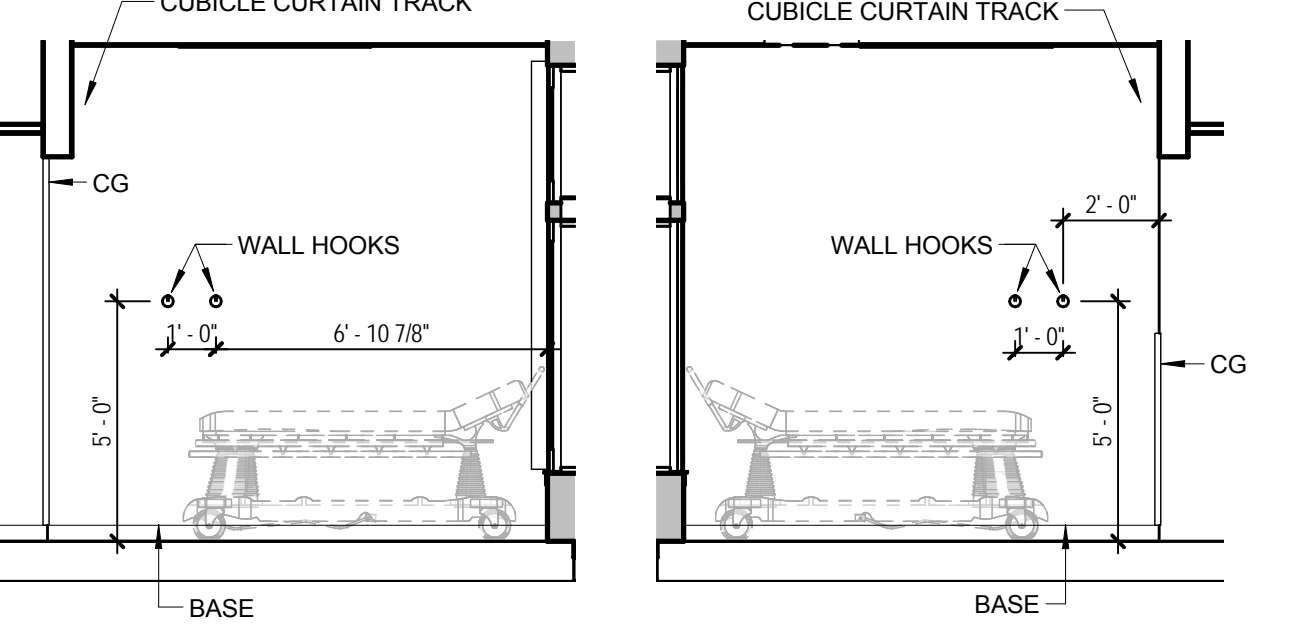
15 POST-OP #110 - WEST ELEV.
1/4" = 1'-0"



14 PRE-OP #108 & POST-OP #110 - SOUTH ELEV.
1/4" = 1'-0"

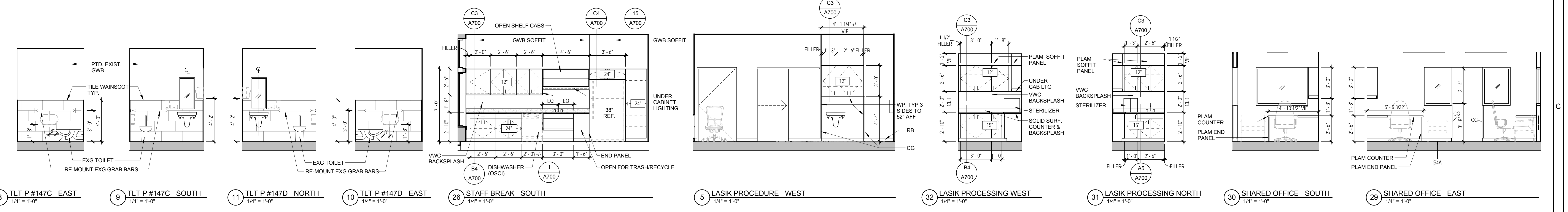


19 PRE-OP #108 & POST-OP #110 - NORTH ELEV.
1/4" = 1'-0"

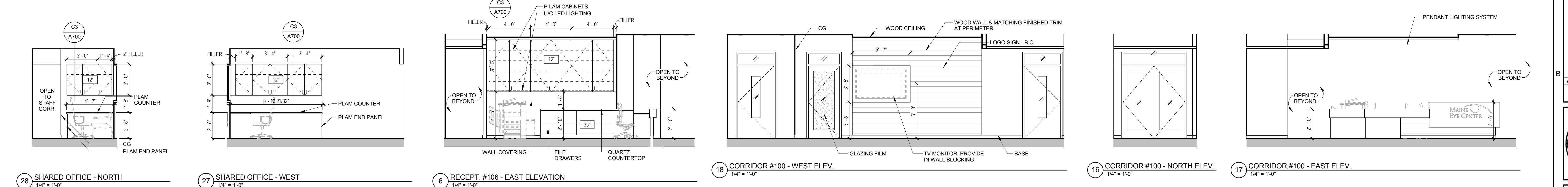


23 PRE-OP #108.4 - EAST ELEV. - TYP.
1/4" = 1'-0"

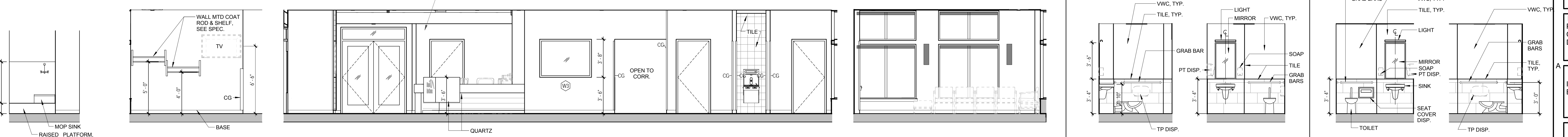
21 PRE-OP #108.3 - WEST ELEV. - TYP.
1/4" = 1'-0"



8 TLT-P #147C - EAST
9 TLT-P #147C - SOUTH
11 TLT-P #147D - NORTH
10 TLT-P #147D - EAST
26 STAFF BREAK - SOUTH
5 LASIK PROCEDURE - WEST
32 LASIK PROCESSING WEST
31 LASIK PROCESSING NORTH
30 SHARED OFFICE - SOUTH
29 SHARED OFFICE - EAST



28 SHARED OFFICE - NORTH
27 SHARED OFFICE - WEST
6 RECEIPT #106 - EAST ELEVATION
18 CORRIDOR #100 - WEST ELEV.
16 CORRIDOR #100 - NORTH ELEV.
17 CORRIDOR #100 - EAST ELEV.



33 ENV #105 - EAST
7 WAITING #101 - WEST ELEV.
13 WAITING #101 - NORTH ELEV.
12 WAITING #101 - EAST ELEV.
1 TLT-P #102 - EAST ELEV.
2 TLT-P #102 - NORTH ELEV.
3 TLT-P #103 - NORTH ELEV.
4 TLT-P #103 - WEST ELEV.