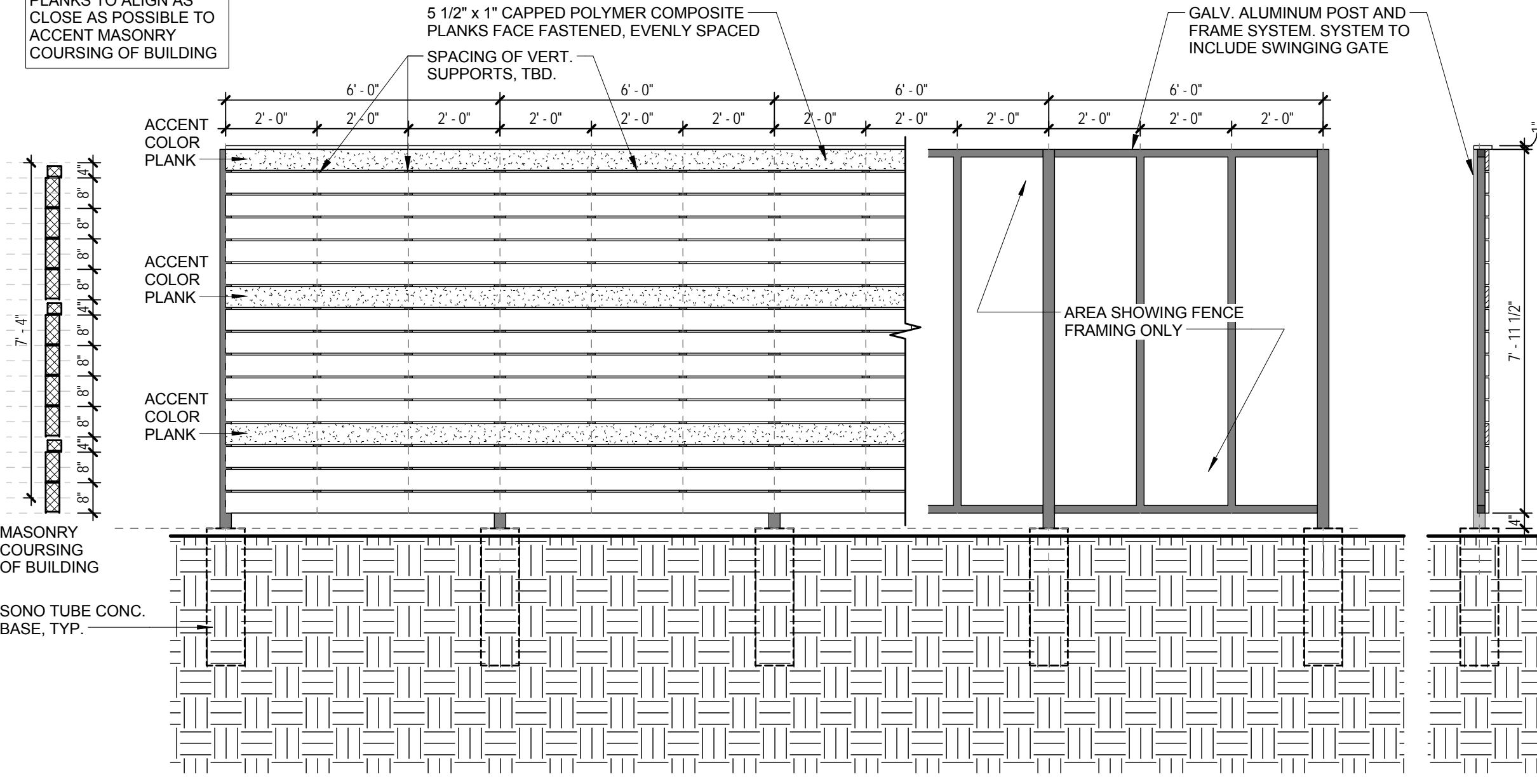
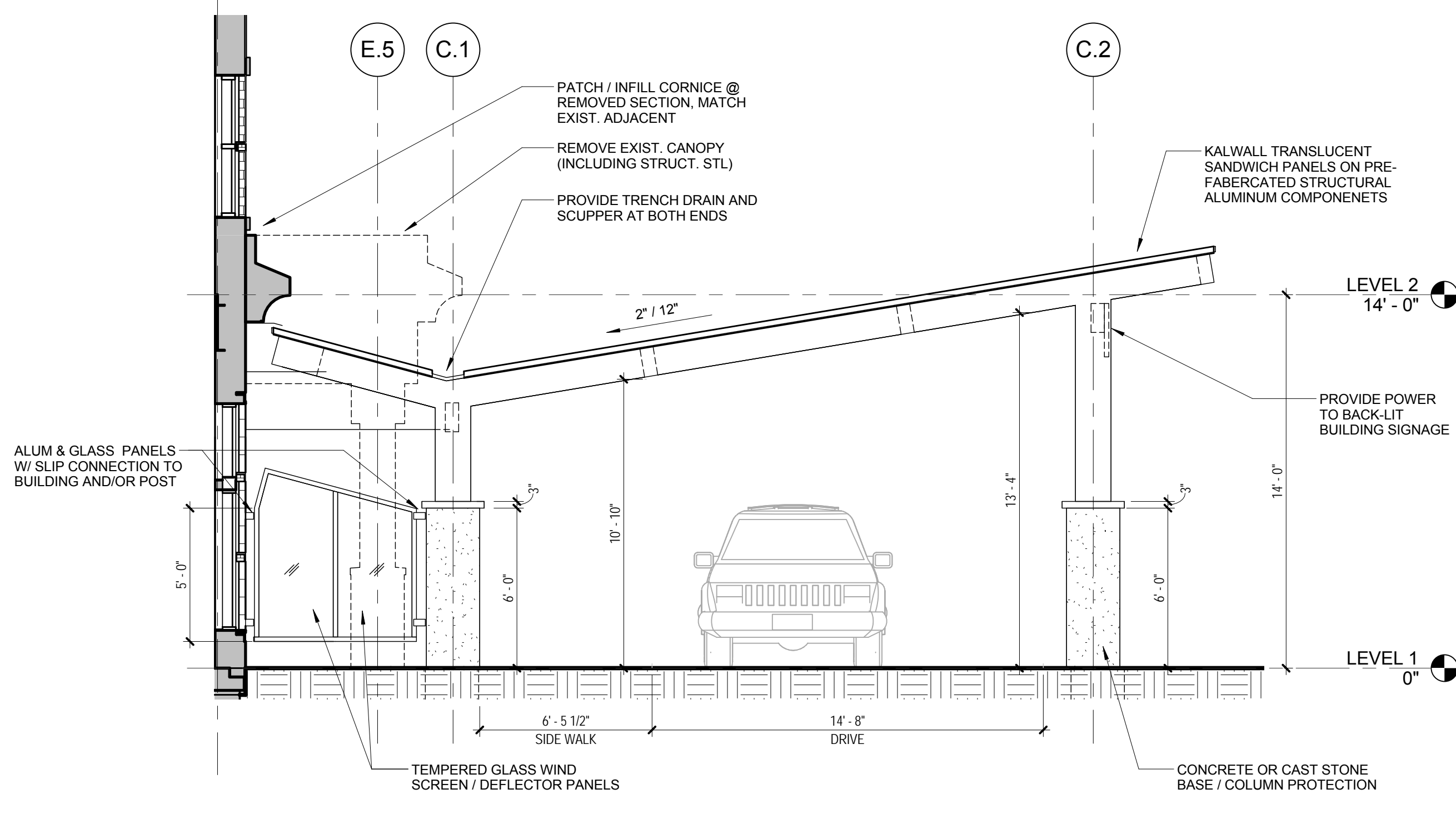


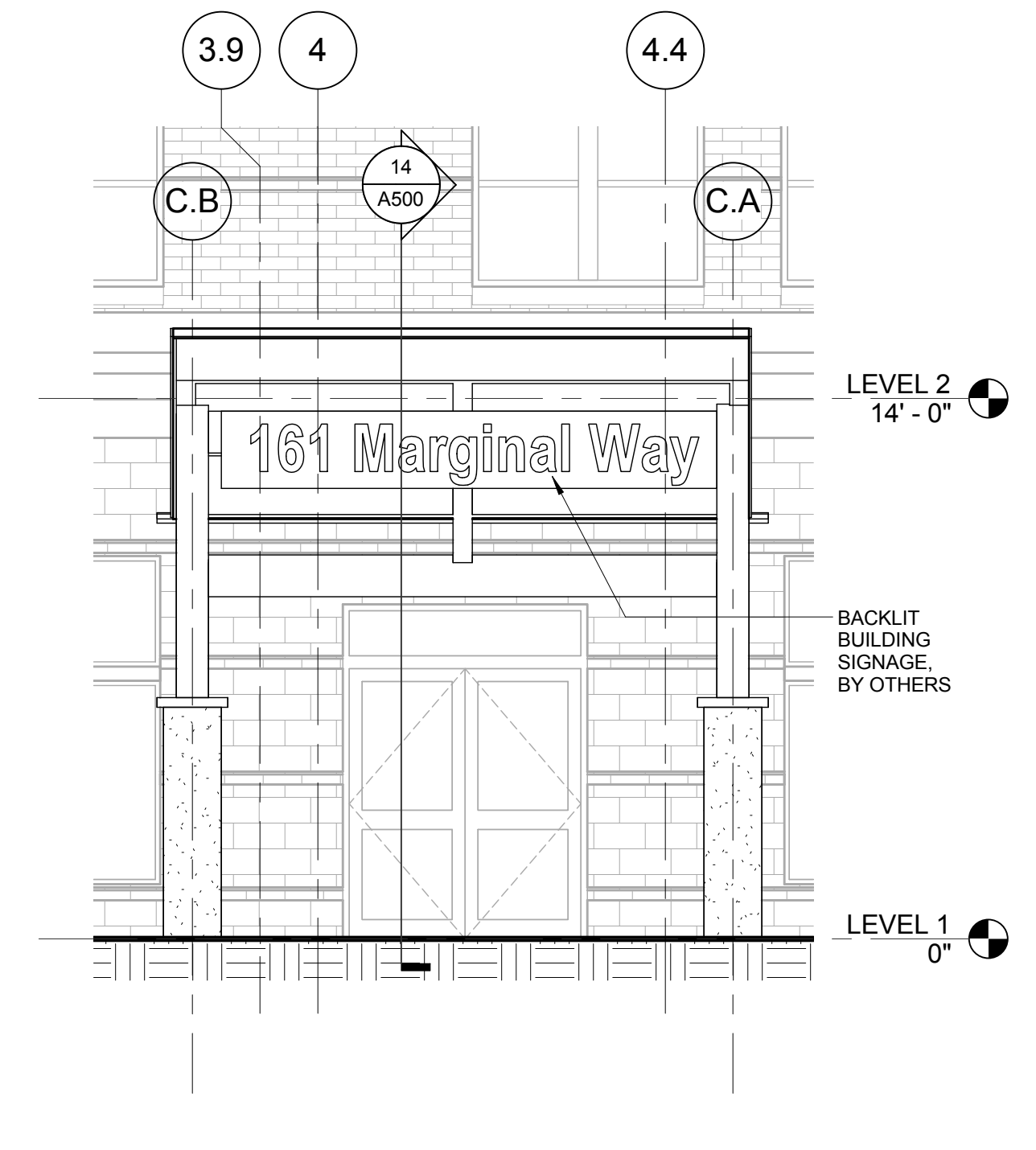
NOTE: ACCENT COLOR PLANKS TO ALIGN AS CLOSE AS POSSIBLE TO ACCENT MASONRY COURSING OF BUILDING



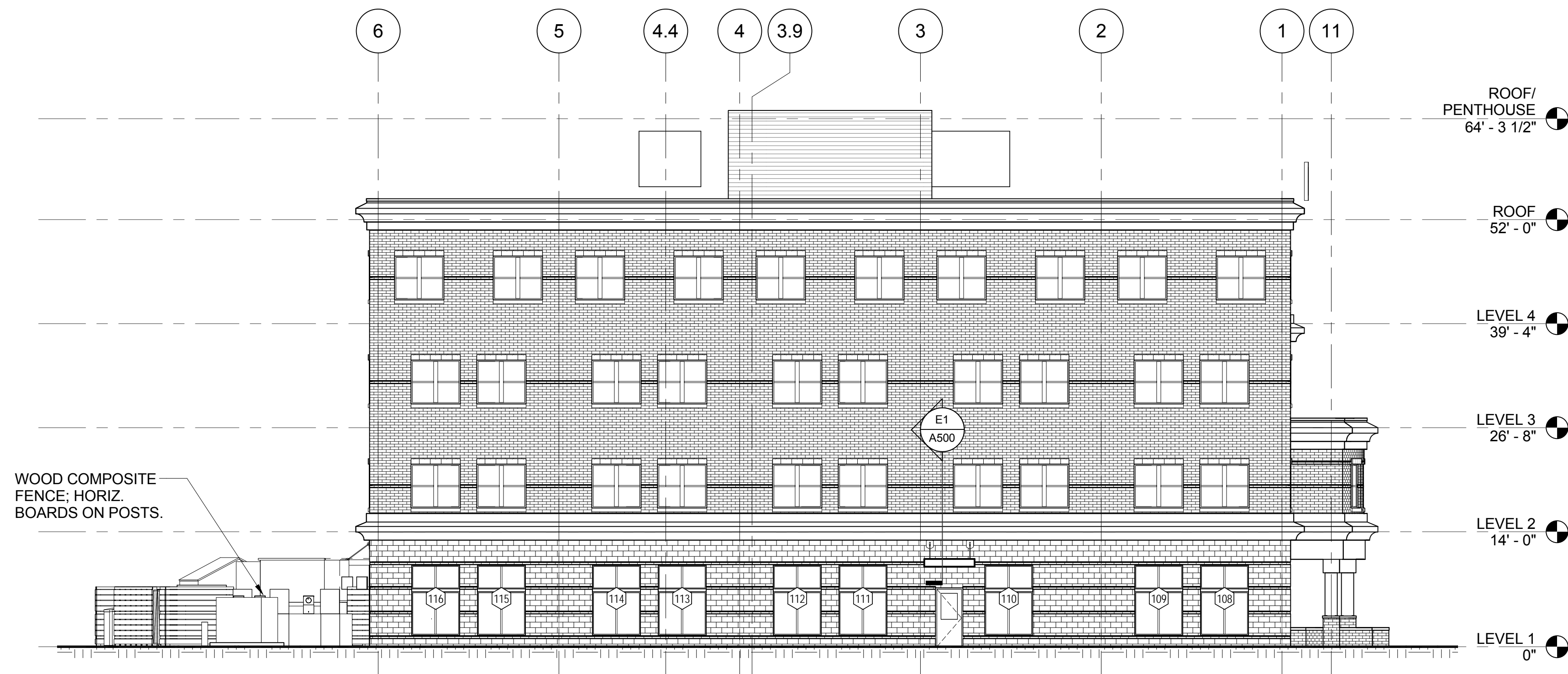
E6 FENCE ELEVATION
3/8" = 1'-0"



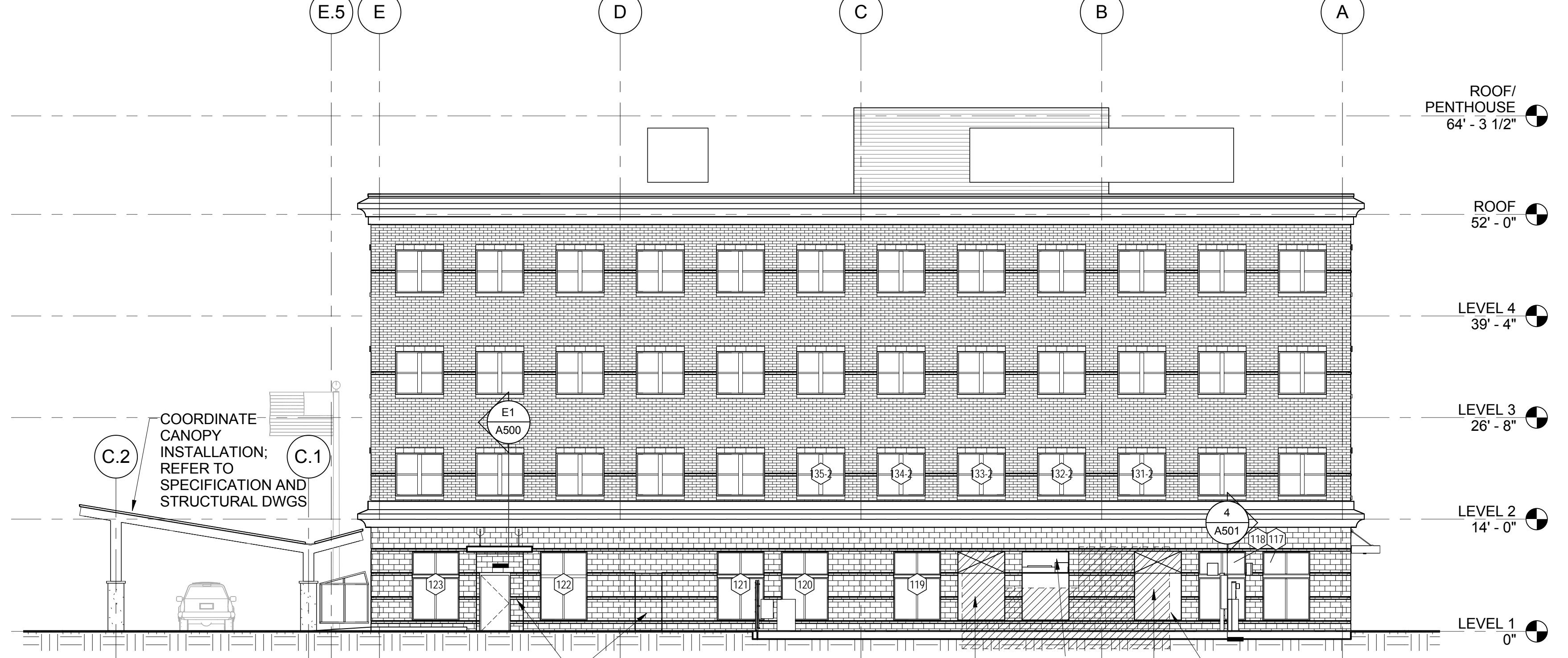
5 SIDE CANOPY SOUTH ELEVATION
1/4" = 1'-0"



6 SIDE CANOPY EAST ELEVATION
1/4" = 1'-0"

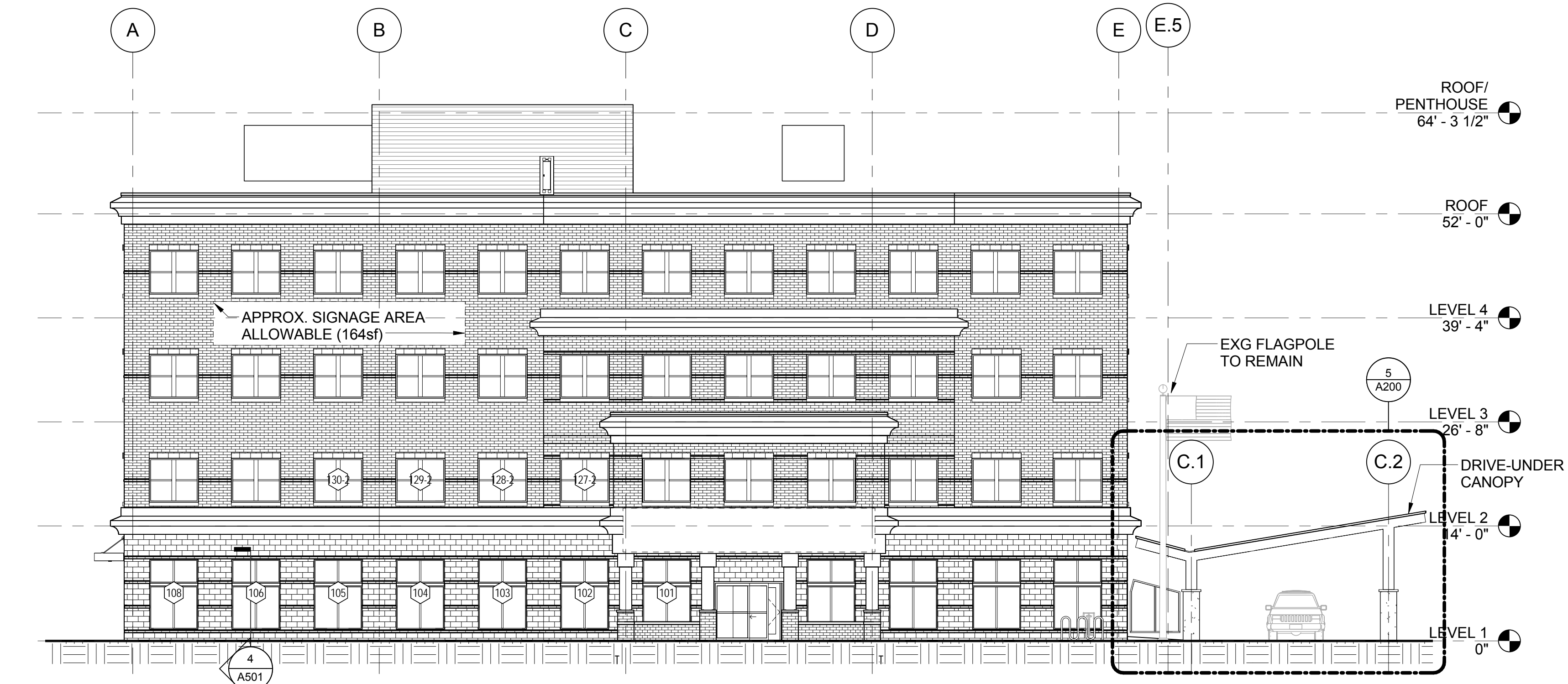


4 WEST ELEVATION
3/32" = 1'-0"

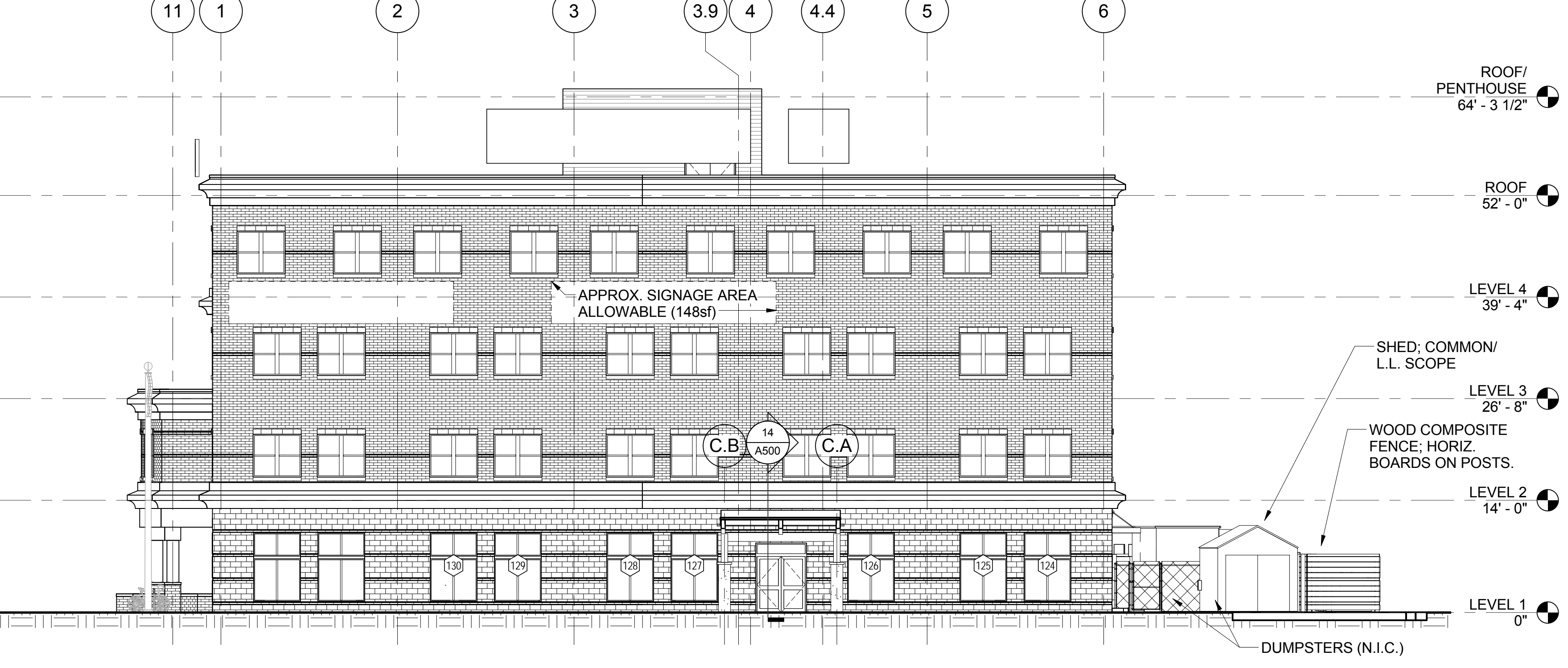


3 NORTH ELEVATION
3/32" = 1'-0"

LANDLORD'S TYPICAL NOTE FOR WORK AT ELEVATIONS:
AT ANYTHING MOUNTED ON EXISTING MASONRY BLOCK OR BRICK: ALL PENETRATIONS WILL BE IN MORTAR JOINTS RATHER THAN INTO FACE OF MASONRY UNITS. WITH NON-CORRODING, NON-GALVANIC ACTING ANCHOR MATERIALS. SEAL ALL HOLES TO PREVENT WATER PENETRATION. NO ANCHORS, THRU-FLASHINGS OR COUNTERFLASHINGS.

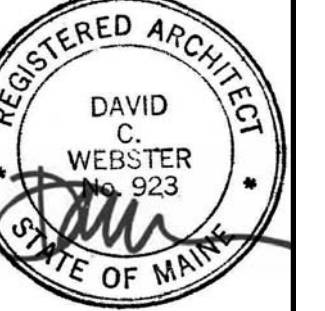


1 SOUTH ELEVATION
3/32" = 1'-0"



2 EAST ELEVATION
3/32" = 1'-0"

#	Date	Description



JOB NO. 15088

DRWN: CHK/ SMD
RSC

SCALE:

ISSUE PERMIT SET - 95% CONSTRUCTION DOCUMENTS
04.12.16

TITLE:
EXTERIOR ELEVATIONS

SHEET
A200