



**COPYRIGHT**  
PDT Architects  
Re-use or reproduction of the contents of this document is not permitted without written permission of PDT Architects.

**MAINE EYE - RETINA & SURGERY CENTER**  
161 Marginal Way - Portland, Maine 04101

- FLOOR PLANS:**
- PARTITIONS ARE TYPE S4A U.N.O., FURRED PARTITIONS ARE TYPE S2F U.N.O.
  - SEE A003 LIFE SAFETY PLANS FOR REQUIRED RATINGS OF EXISTING WALLS TO REMAIN.
  - WORK FROM GIVEN DIMENSIONS. IN GENERAL, LARGE-SCALE DETAILS TAKE PRECEDENCE OVER SMALLER SCALE PLANS, ELEVATIONS AND BUILDING SECTIONS. NOTIFY THE ARCHITECT OF ANY DIMENSIONAL DISCREPANCIES PRIOR TO COMMENCING THE WORK, AND DO NOT BEGIN WORK UNTIL SUCH DISCREPANCIES ARE RESOLVED BY THE ARCHITECT.
  - DO NOT SCALE THE DRAWINGS.
  - DIMENSIONS INDICATED AS "CLEAR" SHALL BE MAINTAINED IN CASES OF DISCREPANCY.
  - UNLESS NOTED OTHERWISE, THE LOCATION OF DOOR FRAMES SHALL BE:  
 • CMU PARTITIONS: 4" FROM THE ADJACENT WALL TO THE HINGE SIDE OF THE ROUGH OPENING.  
 • METAL STUD PARTITIONS: 4" FROM THE ADJACENT WALL STUDS TO THE HINGE SIDE OF THE ROUGH OPENING.
  - MASONRY OPENING OR ROUGH OPENING DIMENSIONS INDICATED ARE NOMINAL DIMENSIONS AND MAY NOT MATCH THE ACTUAL DIMENSIONS OF THE PRODUCT. COORDINATE ALL MASONRY OPENINGS AND ROUGH OPENINGS WITH THE ACTUAL WINDOW UNIT, DOORFRAME, CURTAIN WALL/STOREFRONT, OR LOUVER SIZES AND REQUIREMENTS.
  - DIMENSIONAL CONTROL:**  
 • EXTERIOR DIMENSIONS ARE TO:  
 - CENTERLINE OF COLUMN  
 - FACE OF MASONRY  
 - FACE OF STUD  
 - FACE OF CONCRETE  
 - CENTERLINE OF WINDOW OPENING  
 - ROUGH OPENING  
 - MASONRY OPENING  
 • INTERIOR DIMENSIONS ARE TO:  
 - CENTERLINE OF COLUMN  
 - FACE OF MASONRY  
 - FACE OF STUD  
 - FACE OF EXISTING FINISH MATERIAL
  - TYPICAL DETAIL NOTES:**  
 • THE FOLLOWING NOTES ARE TYPICAL THROUGHOUT THIS PROJECT AND APPLY IN ALL CASES UNLESS SPECIFICALLY NOTED OTHERWISE. THESE NOTES AND ASSOCIATED DETAILS MAY NOT BE DIRECTLY REFERENCED ON THE DRAWINGS.  
 • ALL COLUMNS ADJACENT TO OR INTEGRAL WITH EXTERIOR WALL CONSTRUCTION SHALL BE ENCLOSED WITHIN THE WALL CONSTRUCTION.  
 • ALL COLUMNS LOCATED ADJACENT TO OR INTEGRAL WITH CMU OR GWB PARTITIONS SHALL BE ENCLOSED WITHIN THE WALL CONSTRUCTION.  
 • ALL FREESTANDING COLUMNS SHALL BE ENCLOSED WITH GWB ON METAL LGMF.  
 • ALL GWB PARTITIONS INTERSECTING MASONRY PARTITIONS, EITHER NEW OR EXISTING, SHALL BE FINISHED WITH A "B" BEAD AND CONTINUOUS SEALANT.  
 • ALL NEW OPENINGS FOR WINDOWS AND DOORS IN EXISTING MASONRY WALLS SHALL BE TOOTHED IN AT THE JAMBS.  
 • ALL ROOF LEADERS, HEAT PIPING, SPRINKLER RISERS, PLUMBING VENTS, SANITARY PLUMBING OR MISCELLANEOUS PIPING SHALL BE ENCLOSED WITHIN THE WALL CONSTRUCTION.  
 • ALL DUCT PENETRATIONS THROUGH FLOORS SHALL BE ENCLOSED IN A CHASE.
  - ALIGN FINISHED FACE OF NEW PARTITIONS WITH FINISH FACE OF EXISTING PARTITIONS WHERE U.N.O. - PATCH, FINISH AND PAINT TO MATCH.
  - WALLS THAT ALIGN TO EXTERIOR WINDOW MULLIONS SHALL BE CENTERED ON MULLION U.N.O.
  - GC RESPONSIBLE FOR MAINTAINING RATING OF EXISTING WALLS AS INDICATED IN PLANS AND CODE PLANS.

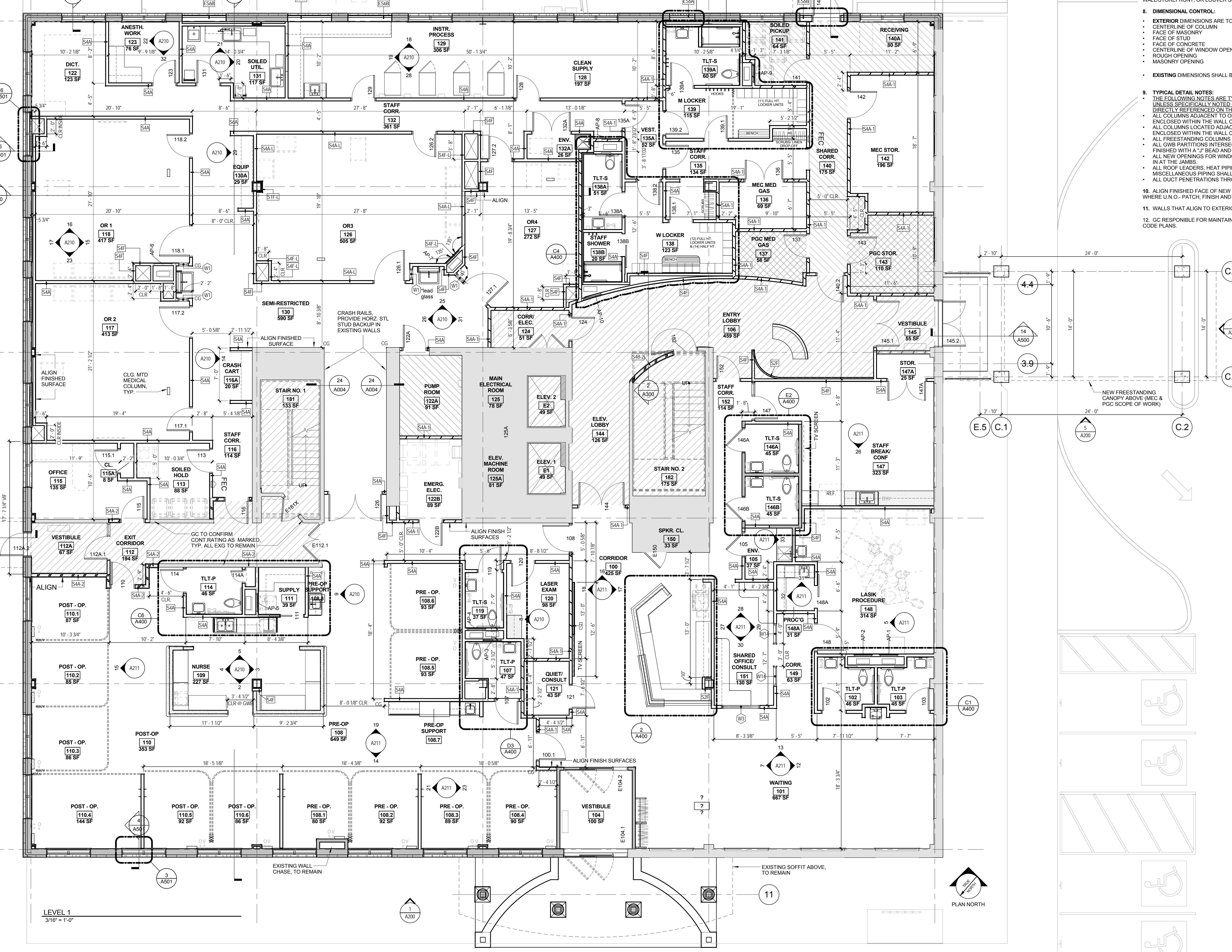
**ABBREVIATIONS**

- MEC - MAINE EYE CENTER (1ST & 2ND FLR. TENANTS)
- PGC - PORTLAND GASTRO CENTER (3RD & 4TH FLR. TENANTS)

**GRAPHIC LEGEND**

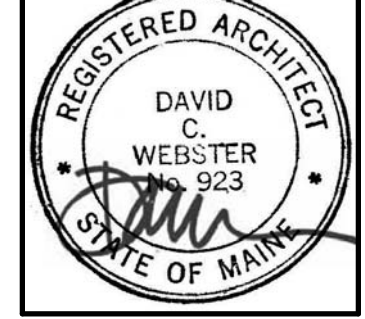
- EXISTING WALL TO REMAIN
- WALL TO BE DEMOLISHED
- NEW WALL
- NEW FIRE RATED WALL - SEE A001 FOR RATING INFO.
- EXISTING FIRE RATED WALL - SEE A001 FOR RATING INFO.
- AREA NOT IN ARCHITECTURAL SCOPE OF WORK
- AREA PART OF PGC SCOPE OF WORK
- COMMON AREAS (COMMON USE FROM BOTH MEC & PGC, FUNDING FROM LAND LORD)
- SHARED AREAS (SHARED USE FROM MEC & PGC, COST SPLIT BETWEEN MEC & PGC)
- DEMOLITION KEYNOTE

**NOTE:** EQUIPMENT AND FURNITURE NOT INCLUDED IN PROJECT SCOPE. SHOWN DASHED AND HALF-TONE. FOR LAYOUT AND PLANNING PURPOSES ONLY.



**LEVEL 1**  
3/16" = 1'-0"

#	Date	Description
1		Revision Schedule



JOB NO. 15088

DRWN: CHK:  
SMW RSC

SCALE:

ISSUE PERMIT SET - 95% CONSTRUCTION DOCUMENTS  
04.12.16

TITLE:  
LEVEL 1 - FLOOR PLAN

SHEET  
**A101**