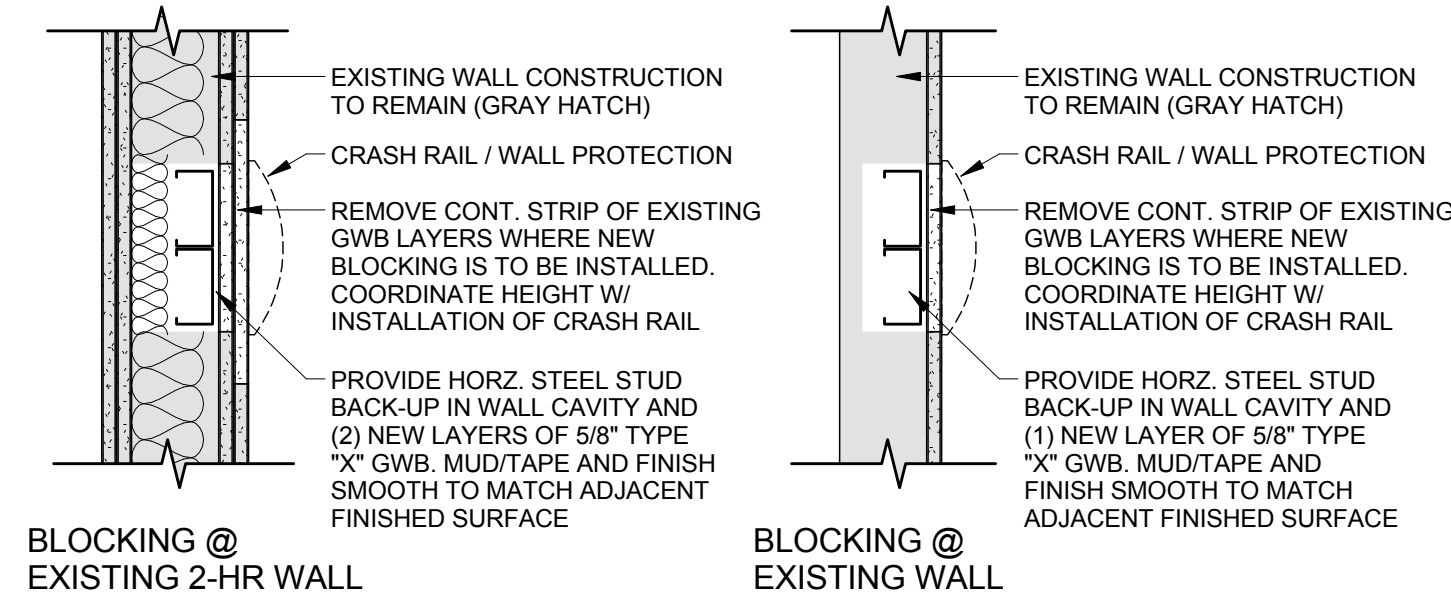
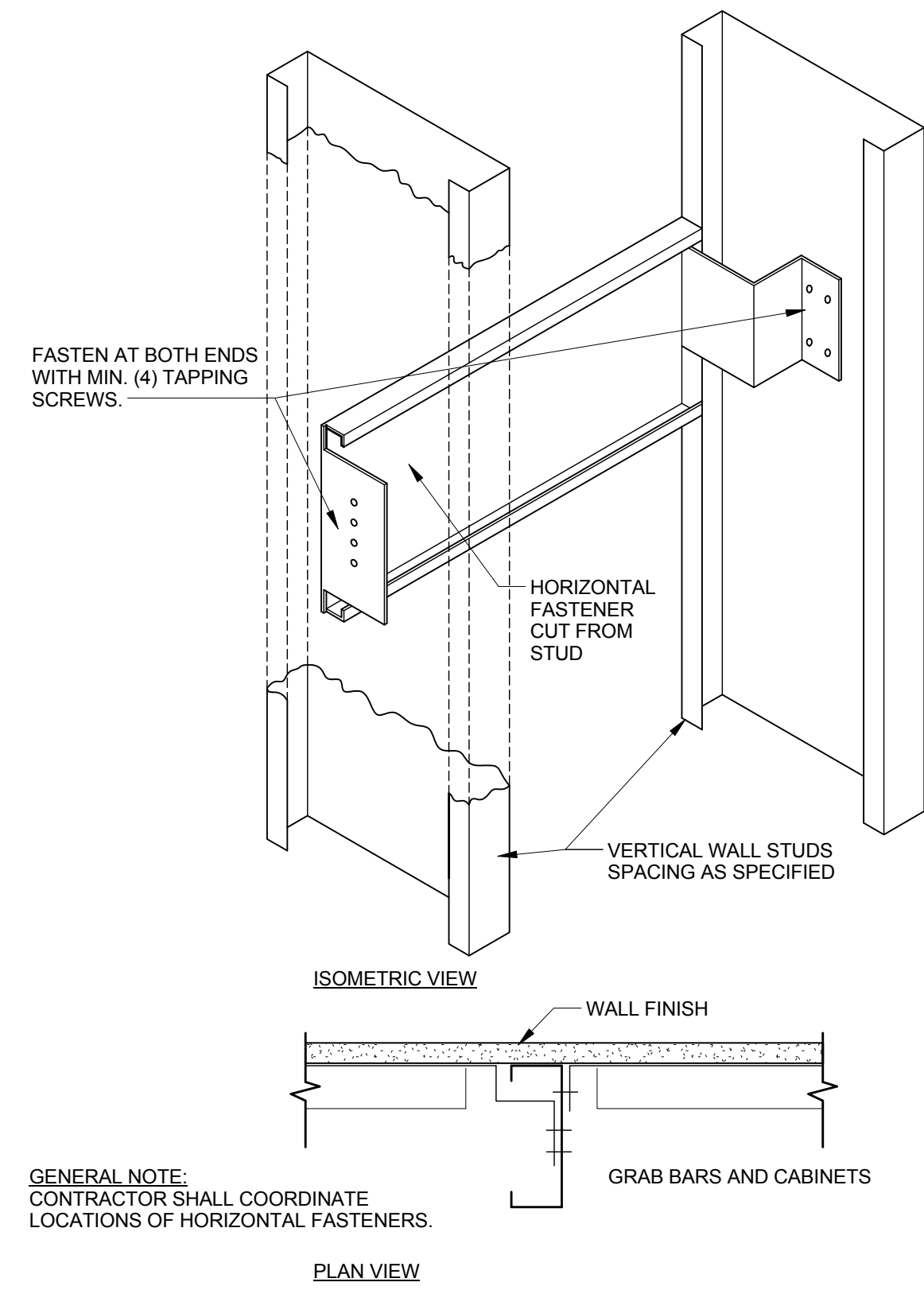
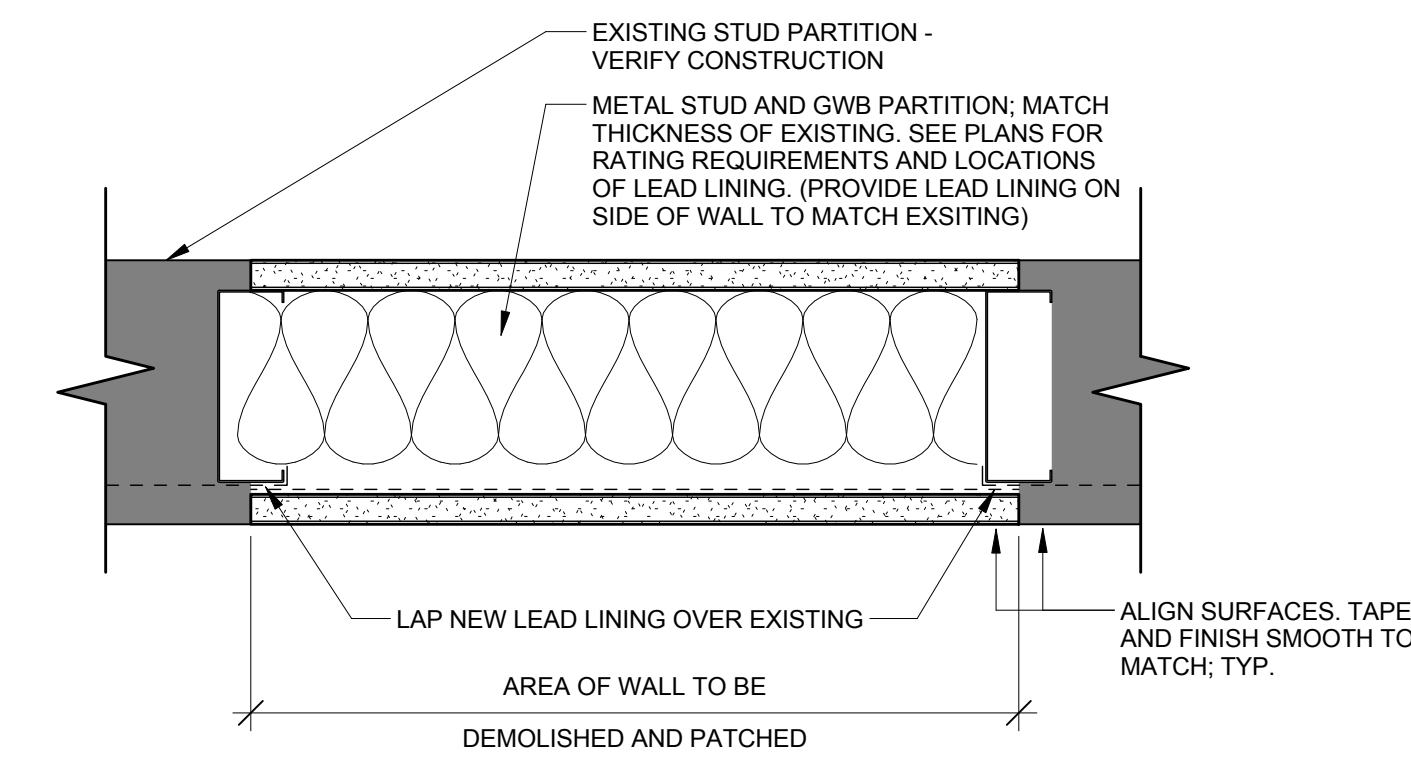


INTERIOR

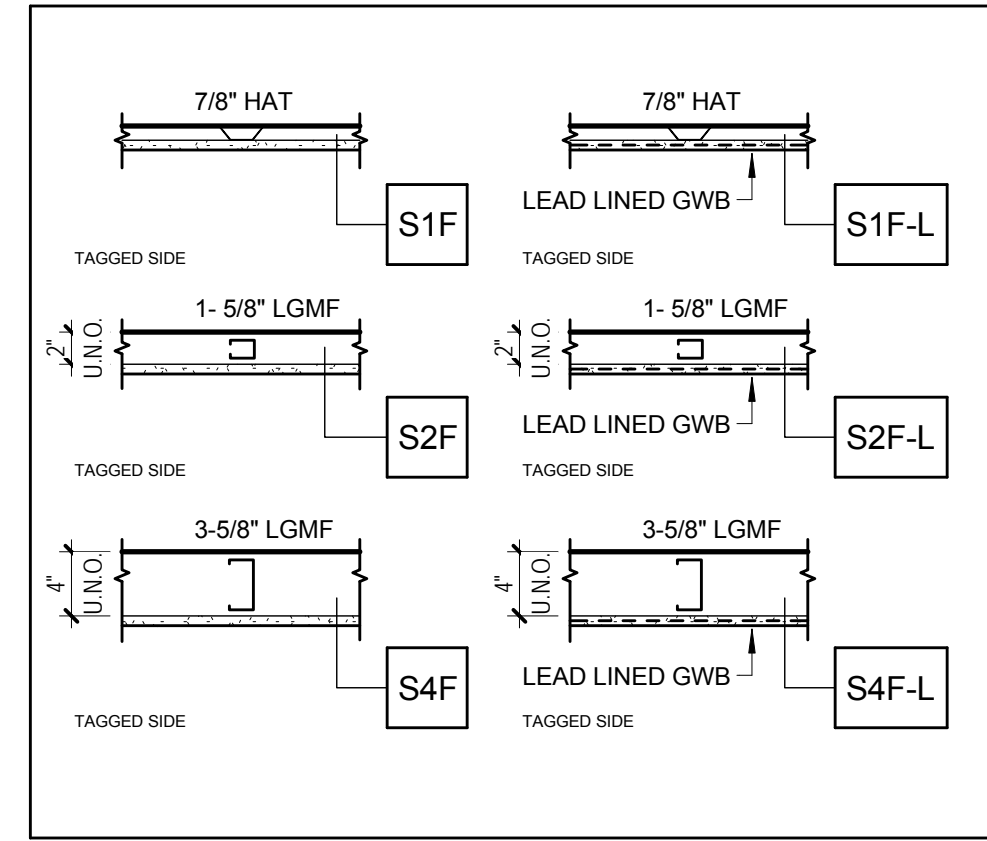
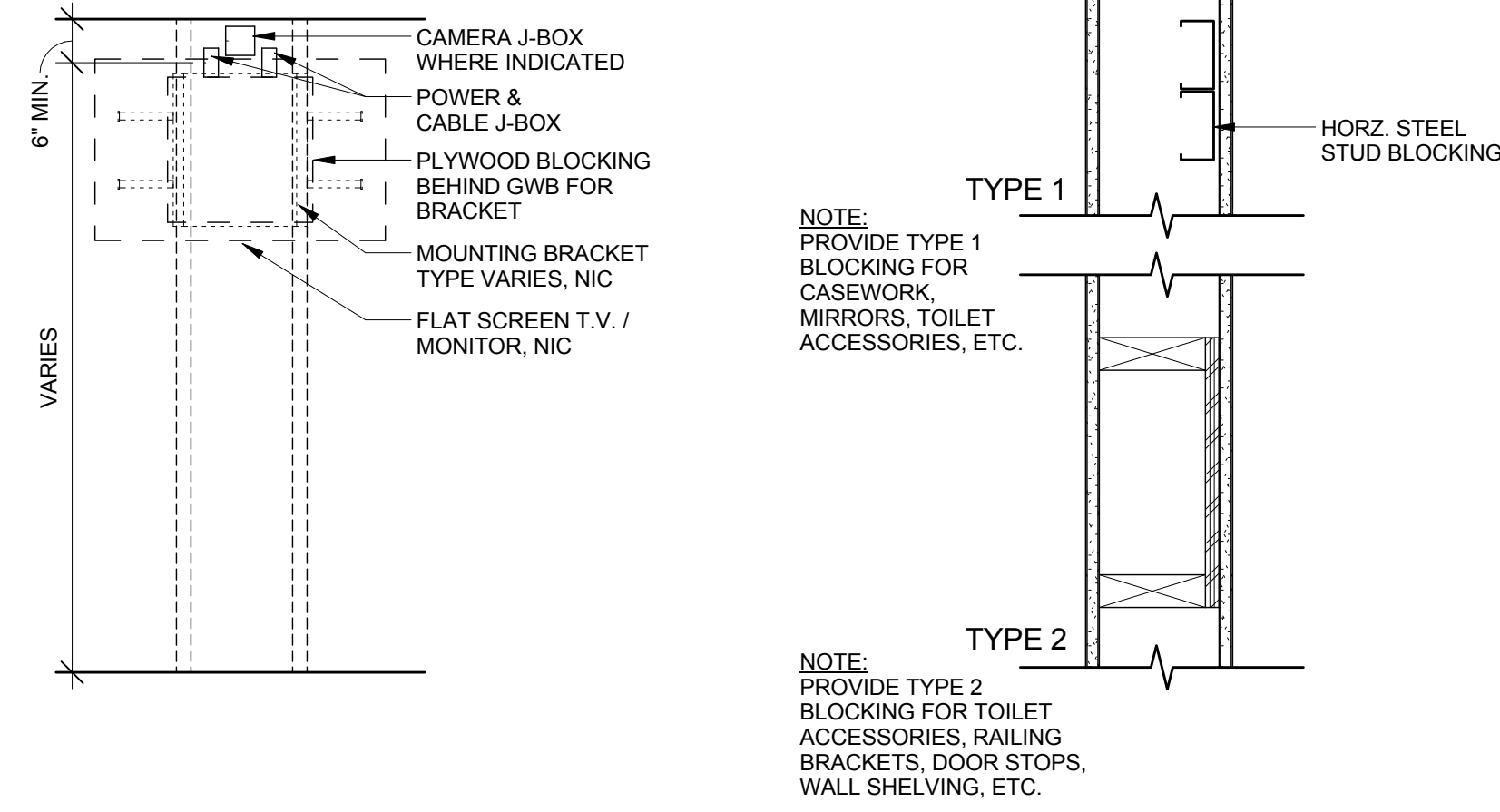
EXTERIOR



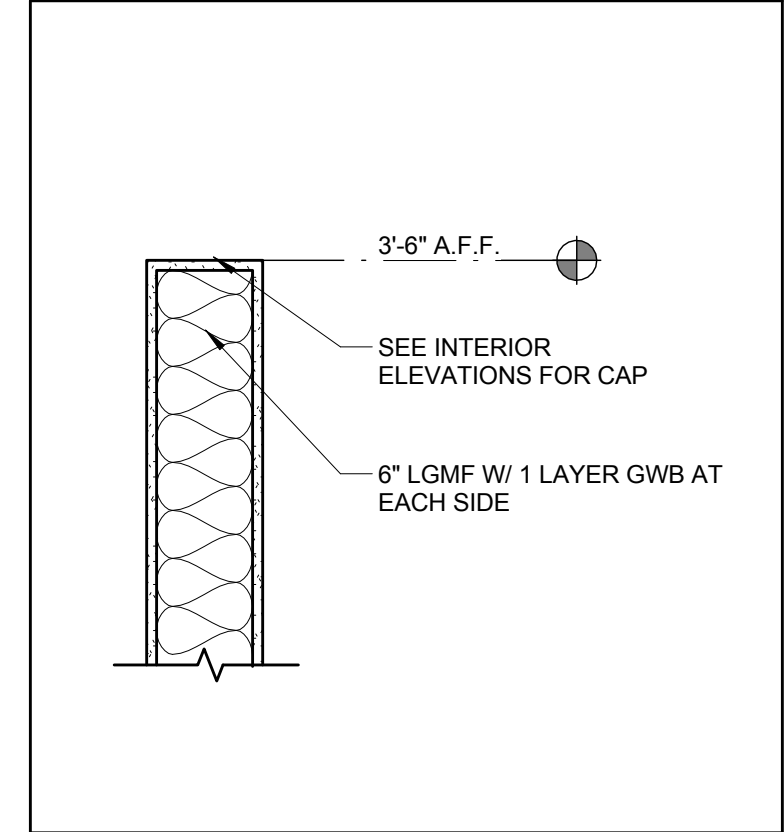
NOTE: REFER TO DETAIL C1A/502 FOR ANCHORAGE DETAIL



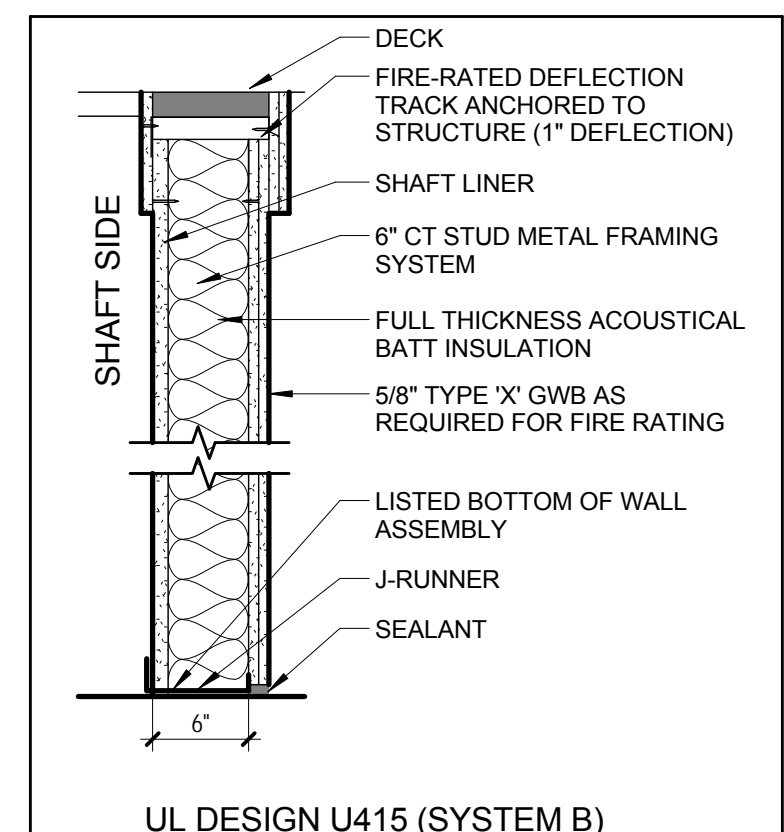
GENERAL NOTE: CONTRACTOR SHALL COORDINATE LOCATIONS OF HORIZONTAL FASTENERS.



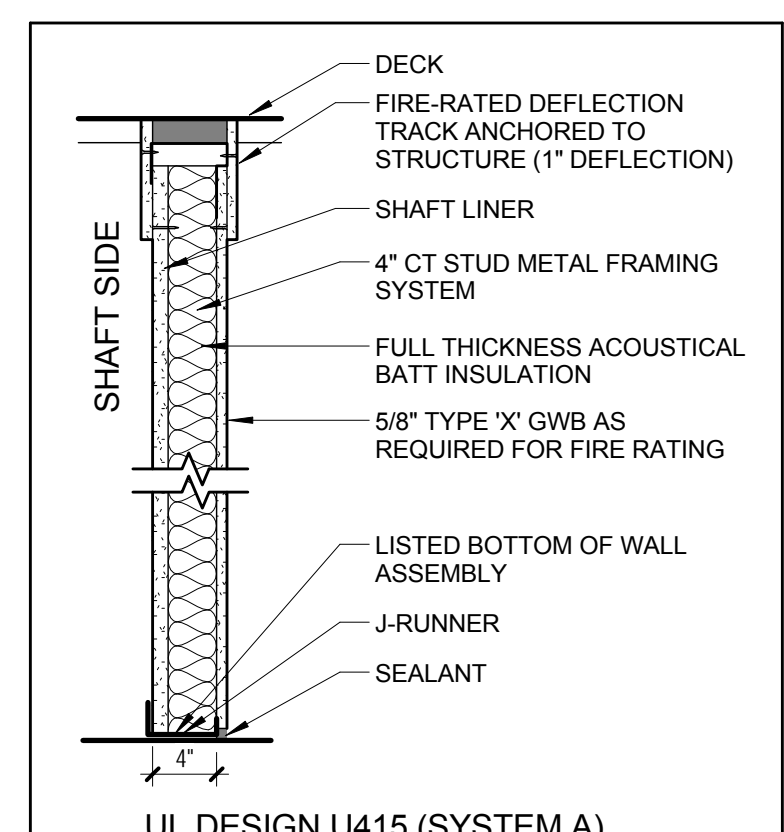
METAL STUD FURRING
EXTEND GWB 3" ABOVE
FIN. CLG. U.N.O.



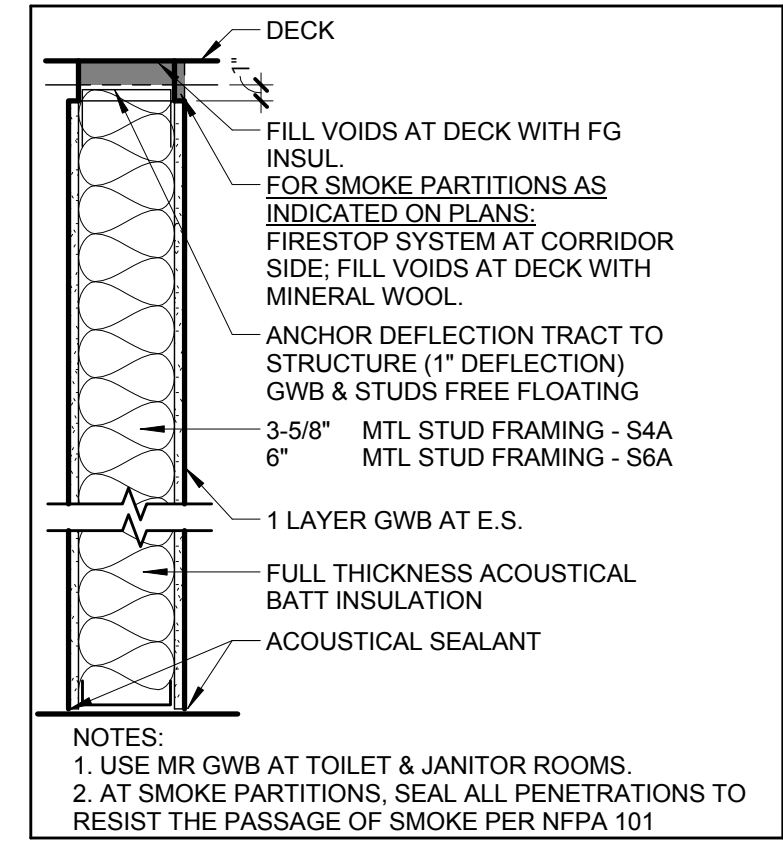
METAL STUD PARTITION
PARTIAL HEIGHT



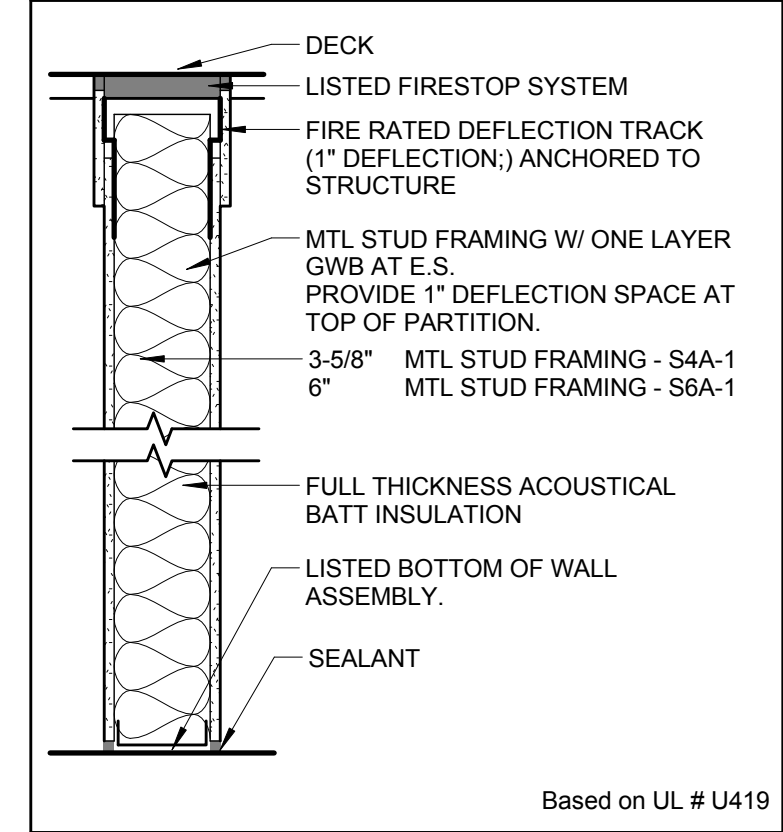
SHAFT WALL SYSTEM
2-HOUR FIRE RATED



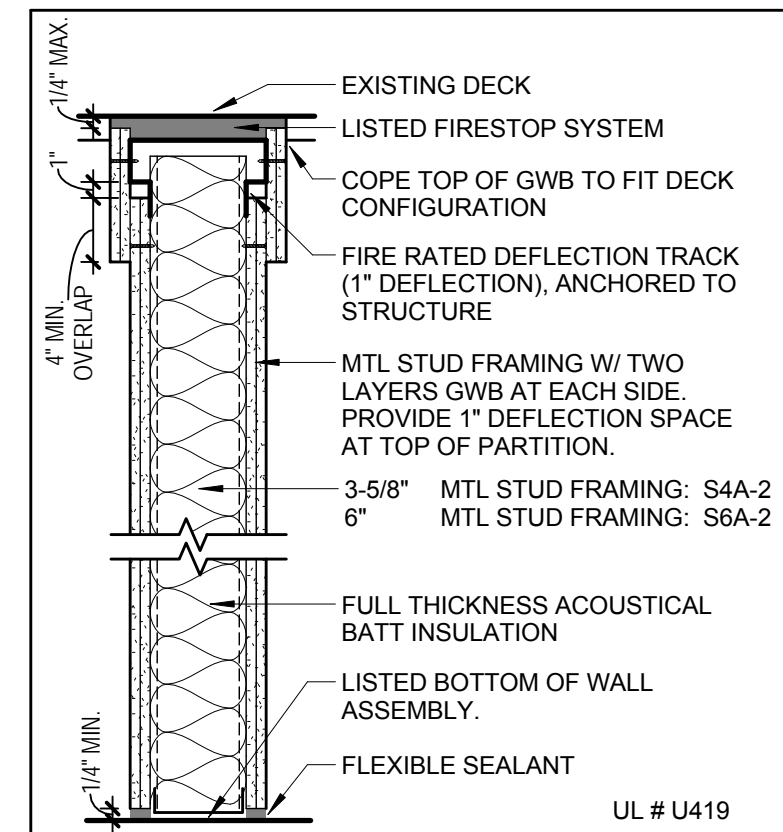
SHAFT WALL SYSTEM
1-HOUR FIRE RATED



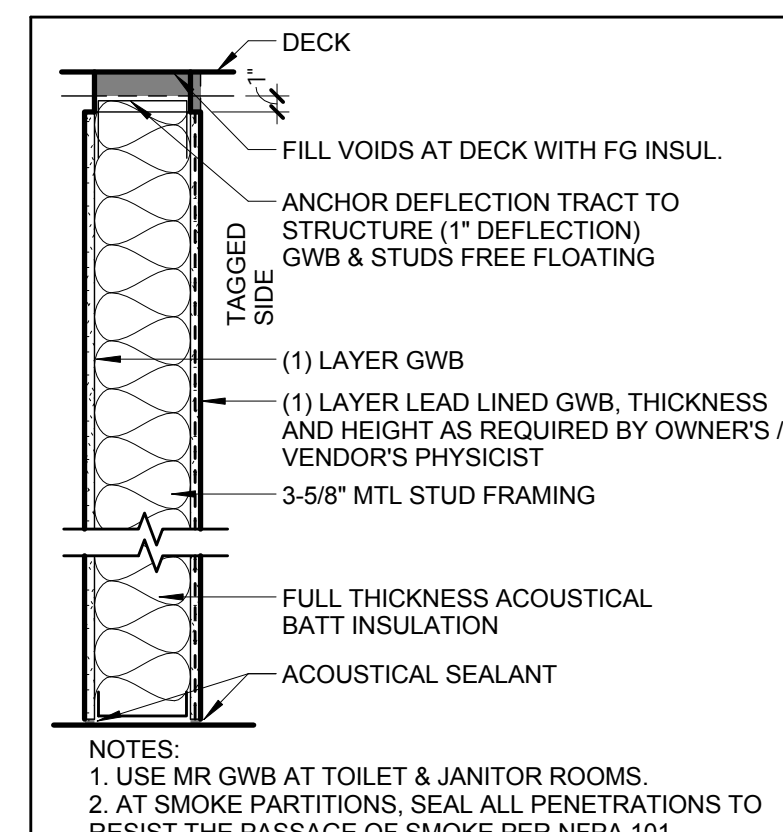
METAL STUD PARTITION
FULL HEIGHT



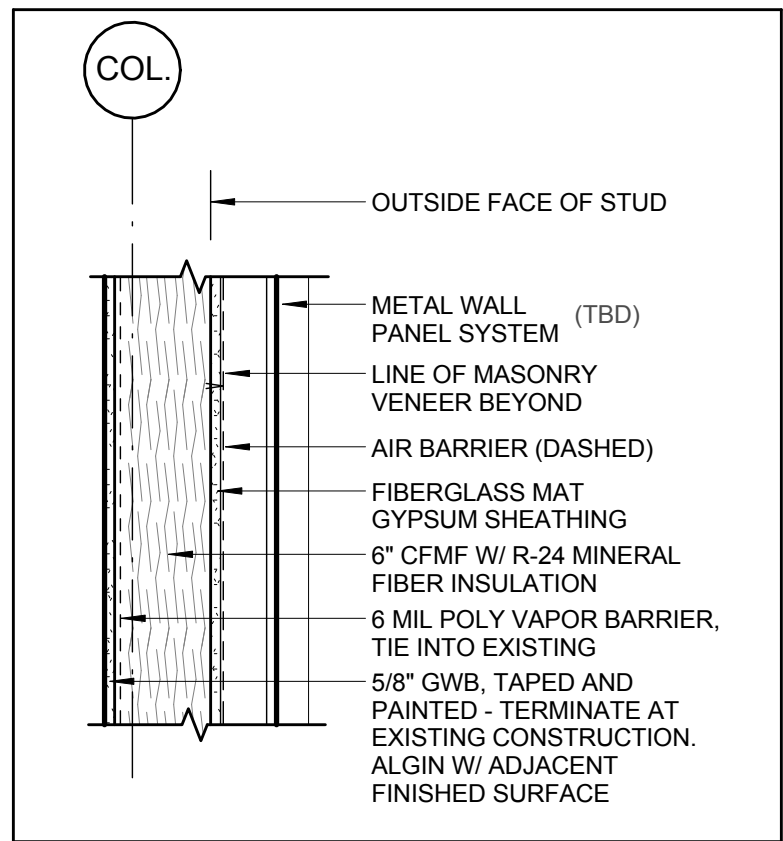
METAL STUD
FULL HEIGHT
1-HOUR FIRE-RATED



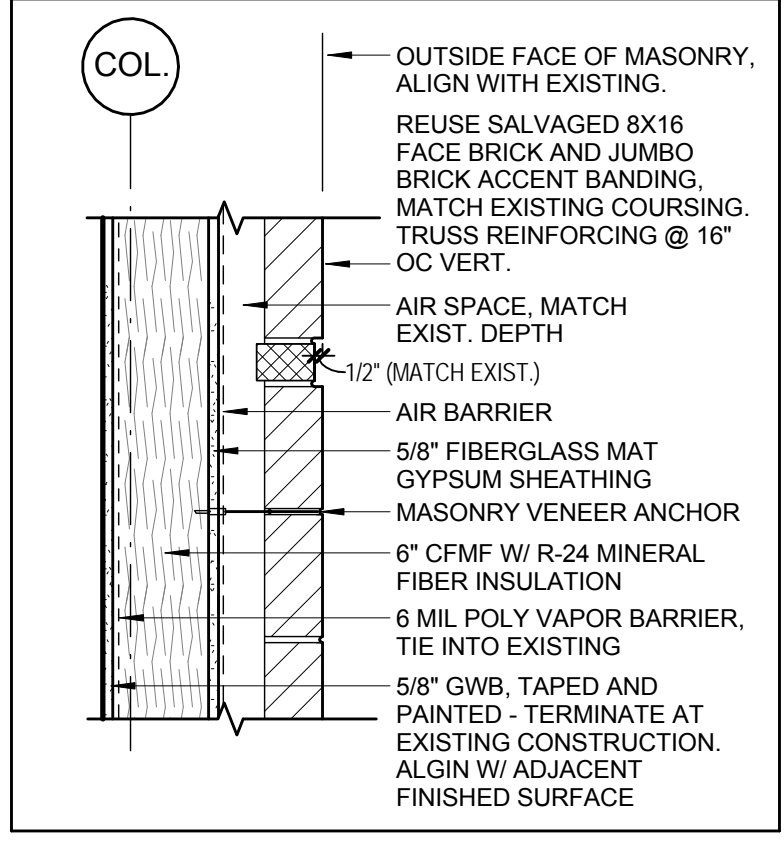
METAL STUD
FULL HEIGHT
2-HOUR FIRE-RATED



METAL STUD
FULL HEIGHT
LEAD-LINED



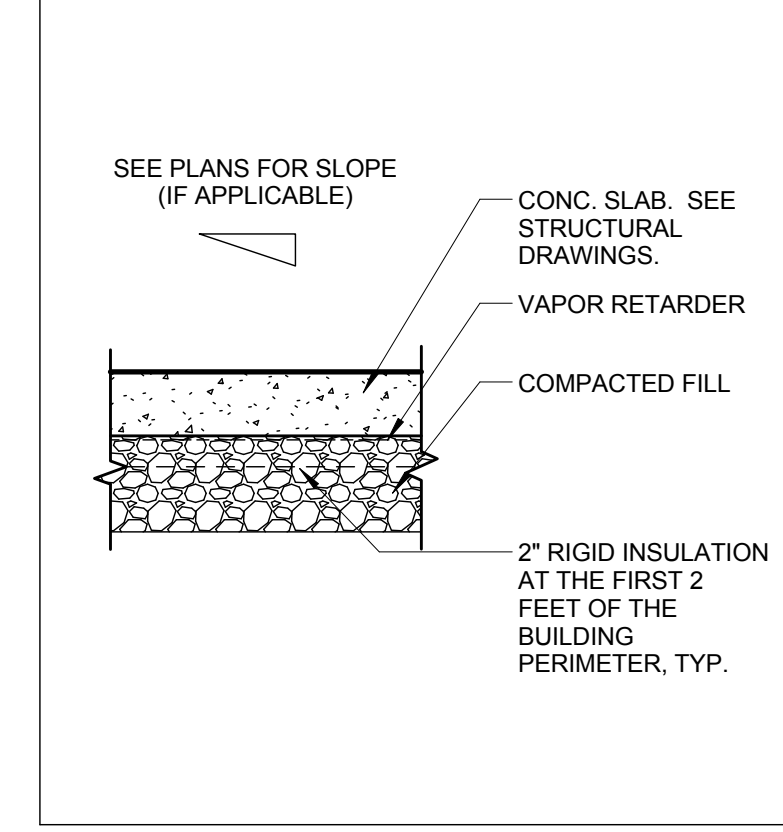
METAL WALL PANELS AT
CFMF BACKUP (WALL INFILL)



MASONRY VENEER AT CFMF
BACKUP (WALL INFILL)

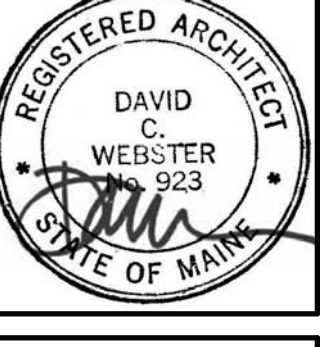
FLOOR

Note: "Do NOT trench, excavate, grind or remove any of the 1st floor structural concrete slab without first consulting with building Owner."



CONCRETE SLAB ON GRADE

#	Date	Description
Revision Schedule		



JOB NO. 15088

DRWN: CHK; RSC

SCALE:

ISSUE PERMIT SET - 95% CONSTRUCTION DOCUMENTS
04.12.16

TITLE: TYPICAL ASSEMBLIES

SHEET

A004