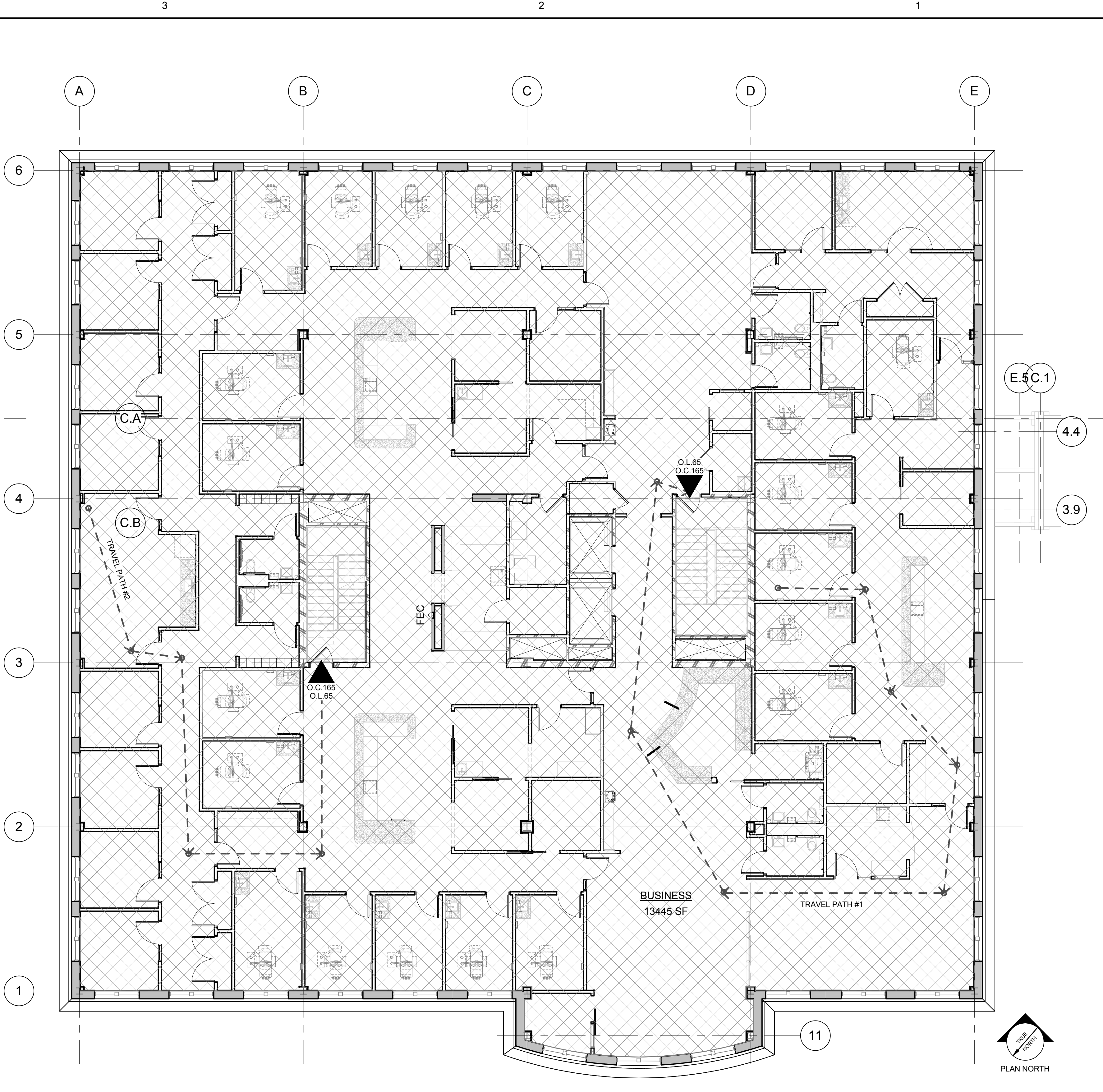


**1 LEVEL 1 LIFE SAFETY PLAN**  
 1/8" = 1'-0"



**2 LEVEL 2 LIFE SAFETY PLAN**  
 1/8" = 1'-0"

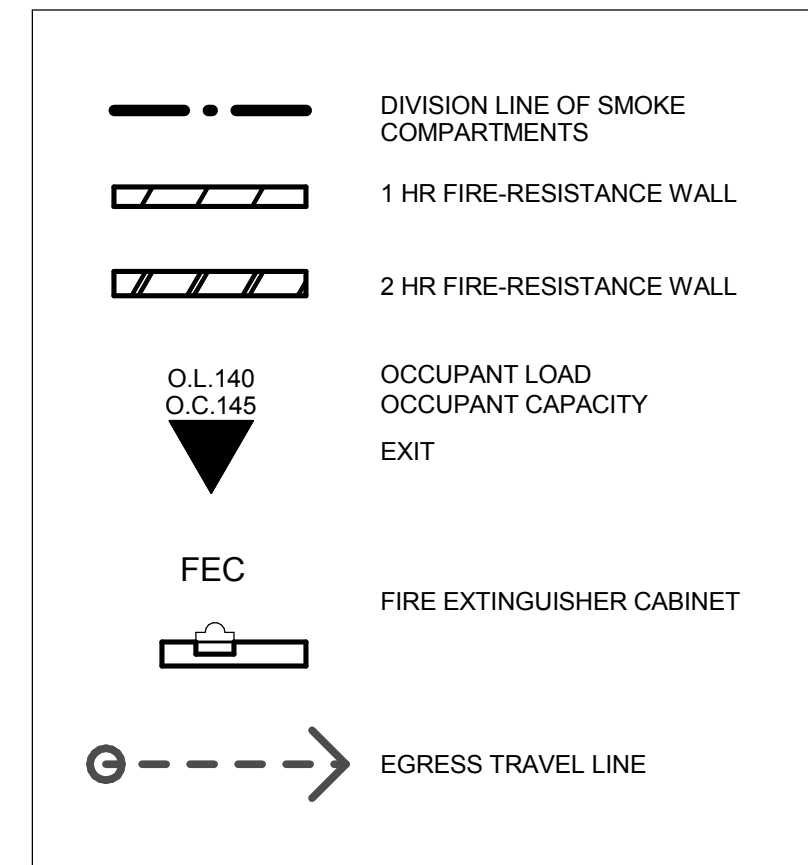
OCCUPANT LOADS						
AREA OCCUPANCY	AREA	OCCUPANT LOAD	OCCUPANTS	EGRESS WIDTH REQUIRED FROM LEVEL	EGRESS PROVIDED FROM LEVEL	STAIR WIDTH REQUIRED FROM LEVEL
LEVEL 1						
AMBULATORY CARE	7621 SF	100 SF	77	15.3	172.5	23.0
BUSINESS	5579 SF	100 SF	56	11.3	0	16.9
LEVEL 1: 2	13200 SF		133	26.6		39.9
LEVEL 2						
BUSINESS	13445 SF	100 SF	135	27.0	69	40.5
LEVEL 2: 1	13445 SF		135	27.0		40.5
LEVEL 3						
BUSINESS	13431 SF	100 SF	135	27.0	69	40.4
LEVEL 3: 1	13431 SF		135	27.0		40.4
LEVEL 4						
AMBULATORY CARE	10990 SF	100 SF	110	22.1	69	33.1
BUSINESS	1354 SF	100 SF	14	2.8	0	4.2
LEVEL 4: 2	12344 SF		124	24.9		37.3

Egress-Travel Path Schedule	
Travel Path ID	Travel Distance
1st FLR #1	77'-6"
1st FLR #2	62'-0"
1st FLR #3	95'-6"
2nd FLR #1	149'-0"
2nd FLR #2	96'-0"

**SUMMARY OF TOILET COUNTS: PER UPC 2009 (MAINE INTERNAL PLUMBING CODE) NOTES:**  
 1. TOILET ROOMS ARE LOCATED AT SPECIFIC AREAS TO MEET FGI GUIDELINES FOR DESIGN AND CONSTRUCTION OF HOSPITALS AND OUTPATIENT FACILITIES, 2014 EDITION. THE FOLLOWING CONFIRMS THAT OVERALL COUNT OF FIXTURES MEETS PLUMBING CODE REQUIREMENT.  
 2. PER TABLE 4.1: PUBLIC OR PROFESSIONAL OFFICES = SAME AS OFFICE OR PUBLIC BUILDINGS - FOR EMPLOYEE USE  
 FIRST FLOOR: (THIS FLOOR IS PRIMARILY AMBULATORY HEALTHCARE USE)  
 133 OCC./2 = 67 M + 67 W  
 ROD: 4 M + 5 W = 9 TOILETS PROVIDED: 9  
 3. PER TABLE 4.1: OFFICE OR PUBLIC BUILDINGS  
 SECOND FLOOR: (THIS FLOOR IS A BUSINESS USE)  
 135 OCC./2 = 68 M + 68 W  
 ROD: 1 M + 4 W = 5 TOILETS PROVIDED: 7

**SUMMARY OF STORAGE AREAS (MODERATE HAZARD/RATED ROOMS IN BOLD):**  
**FIRST FLOOR**  
 108-7 - CLEAN LINEN CABINET, GENERAL MIXED SUPPLY  
 108-8 - BLANKET WARMER, GENERAL MIXED SUPPLY  
 111 - PYXIS/LOCKED PHARM CABINET, GENERAL MIXED SUPPLY  
 113 - SOILED HOLD, SOILED LINENS, POSSIBLE TRASH HOLDING, SHARPS CABINET  
 115A - GENERAL ADMIN. SUPPLY  
 128 - CLEAN SUPPLY, OPEN S.S. SHELVING WITH STERILE KITS AND OTHER SURGICAL SUPPLY  
 138 - MEDICAL GAS STORAGE & MANIFOLDS  
 137 - MEDICAL GAS STORAGE & MANIFOLDS  
 141 - SOILED PICKUP, SOILED LINENS, SHARPS (FOR VENDOR PICKUP)  
 142 - GENERAL CLINICAL AND ADMINISTRATIVE BULK STORAGE  
 143 - GENERAL CLINICAL AND ADMINISTRATIVE BULK STORAGE  
 147A - GENERAL CONFERENCE ROOM & ADMIN SUPPLY  
**SECOND FLOOR:**  
 212 - MIXED CLINICAL STORAGE, INCLU LOCKED CABINETS FOR INJECTION SUPPLY  
 232 - SAME AS ABOVE  
 279 - SAME AS ABOVE  
 238A - GENERAL CLINICAL & ADMIN SUPPLY  
 252A - SAME AS ABOVE  
 238B - MIXED CLINICAL SUPPLIES  
 252B - CLINICAL & ADMIN. SUPPLY

**OTHER HAZARD NOTES:**  
 1. KITCHENS DO NOT INCLUDE ANY COOKTOPS.



**EXTINGUISHMENT REQUIREMENTS:**  
 Portable fire extinguishers  
 9.7.4.1 - NFPA 10  
 Class A Hazard - Light/Low Hazard Occupancy - Table 6.2.1.1 & IBC 2009 - TABLE 906.3 (1)  
 Building equipped with quick response sprinklers = shall be installed in special hazard areas or where required by IFC Table 906.1  
 IFC Table 906.1:  
 IFC 2206.1 - Rack Storage (high-piled storage)  
 IFC 2206.3 - Combustible Fibers

**HEALTHCARE GUIDELINES COMPLIANCE:**  
 Per FGI Guidelines for Design and Construction of Hospitals and Outpatient Facilities, 2014 Edition  
 It is noted that the Maine Department of Human Services currently has adopted said Guidelines 2006 Edition, but is amenable to a waiver to allow construction under more current guidelines.

**SUMMARY:**  
 The existing building consists of four stories served by 2 stairs, and existing elevators. The building is defined as a reconstruction per NFPA. Any new work is to be built to current code. We will be required to add illumination and emergency lighting to the current means of egress if not provided or to replace as necessary to comply with current codes.

**APPLICABLE CURRENT CODES INCLUDE:**  
 NFPA 101 - 2009  
 MUBEC, IBC 2009 et al.

**43.6.2.1 General** - The means of egress shall comply with the requirements applicable to the existing occupancy as modified by 43.6.2.  
**43.6.2.2** Means of egress in rehabilitation work areas shall be provided with illumination and emergency lighting in accordance with the requirements of other sections of this Code applicable to new construction for the occupancy.  
**43.6.2.2.2** Where the reconstruction rehabilitation work area on any floor exceeds 50 percent of that floor area, means of egress throughout the floor shall be provided with illumination and emergency lighting in accordance with the requirements of other sections of this Code applicable to new construction for the occupancy, unless otherwise specified in 43.6.2.2.4.  
**43.6.4.1** In a building with rehabilitation work areas involving over 50 percent of the aggregate building area, automatic sprinkler systems shall be provided on the highest floor containing a rehabilitation work area and on all floors below in accordance with the requirements of other sections of this Code applicable to new construction for the occupancy.

**OCCUPANCY CLASSIFICATIONS/OCCUPANCY GROUPS:**  
 Level 2 - Business (IBC 304)  
 Level 1 - Business and Ambulatory Care (IBC 304, NFPA 20 and 38)

**FIRE PROTECTION SYSTEMS:**  
 Existing NFPA-13

**ALLOWABLE AREA PER FLOOR - BUILDING 3:**  
 IBC 503  

TYPE	OCCUPANCY	ALLOWABLE AREA	SPRINKLER INCREASE(+200%)
IIA	BUSINESS	37,500	112,500

**ACTUAL OCCUPANCY AREAS - BUILDING 3:**  
 EACH LEVEL - BUSINESS: 13,500 SF

**AREA RATIOS:**  
 BASED ON BUSINESS OCCUPANCY - 13,500/12,500 = 0.12

**ALLOWABLE HEIGHT:**  
 IBC 503  

TYPE	OCCUPANCY	FEET	STORIES
IIA	BUSINESS	65+20 = 85	5+1 = 6

 NFPA 101  

TYPE	OCCUPANCY	FEET	STORIES
II(11)	AMBULATORY	N/A	22 PERMITTED
II(11)	BUSINESS	N/A	NO MINIMUM REQUIREMENTS

**SEPARATION OF OCCUPANCIES:**  
 IBC 508.4, Table 508.4  
 No separation required for Business Occupancy  
 IBC 422  
 Smoke barriers. Smoke Barriers shall be provided to subdivide every ambulatory care facility greater than 10,000 sf. into a minimum of 2 smoke compartments per story. The travel distance from any point in a smoke compartment to a smoke barrier door shall not exceed 200 feet. The smoke barrier shall be installed in accordance with 710

**NFPA-101**  
 6.1.14.4 Separated Occupancies  
 Table 6.1.14.4.1 (a) - 1-hr fire-rated separation required between Business and Ambulatory occupancies.  
 20.3.7.2 Every story of an ambulatory health care facility shall be divided into not less than two smoke compartments, unless otherwise permitted by the following:  
 (1) This requirement shall not apply to facilities of less than 5000 ft<sup>2</sup> (465 m<sup>2</sup>) that are protected by an approved automatic smoke detection system.  
 (2) This requirement shall not apply to facilities of less than 10,000 ft<sup>2</sup> (929 m<sup>2</sup>) that are protected throughout by an approved, supervised automatic sprinkler system installed in accordance with Section 9.7.

**SMOKE AND FIRE PROTECTION:**  
 Corridor walls: None  
 Exterior walls: None  
 Vertical openings: Fire-Resistance Rating. Shaft Enclosures shall have a fire-resistance rating of not less than 2 hours where connecting four stories or more, and not less than 1 hour connecting less than four stories  
 where  
 Exit stair enclosures: 2-hour w/ 90 minute opening protectives  
 Smoke Compartments: Minimum two in Ambulatory care over 10,000 sf.  
 Fire Barriers: Fire barriers must be continuous from floor deck to the floor or roof assembly above. Structure supporting fire barriers that provide enclosure of exits or protection of vertical openings must be provided with a fire-rating corresponding to the fire-rating of the supported fire barrier.

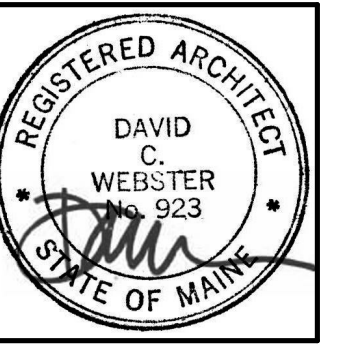
**MEANS OF EGRESS:**  
 Egress width: Stairs: 3"/person (not less than 44")  
 Corridors/doors/ramps: 2"/person (min 44" in Business/Ambulatory occupancies)  
 Door Width: Min clear 32" Max leaf 48"  
 Common path of travel: Business: IBC 1014.3 - Shall not exceed 100'  
 NFPA 382.5.3.1 - Shall not exceed 100'  
 Ambulatory: NFPA Reference 382.5

**Number of exits:** Two exits or exit access from any Space w/ o.l. < 49 or where Common Path of Travel distance is exceeded. Min two exits from each floor level.

**Distance to an exit:** Business: 300 ft (IBC/NFPA)  
 Ambulatory: 200 ft (NFPA)

**Dead End:** Business: 50 ft (IBC/NFPA)  
 Ambulatory: 50 ft (NFPA)

#	Date	Description
		Revision Schedule



JOB NO. 15088

DRWN: CHK.  
 SMD: RSC

SCALE:

ISSUE PERMIT SET - 95% CONSTRUCTION DOCUMENTS

DATE: 04.12.16

TITLE: LIFE SAFETY PLANS & CODES SUMMARY

SHEET A003