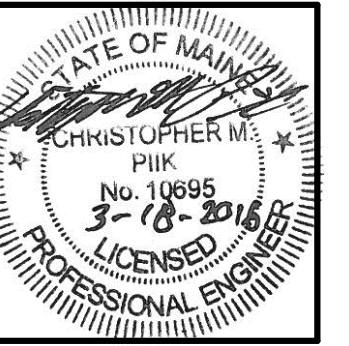


**PORTLAND GASTROENTEROLOGY CENTER**  
 161 Marginal Way - Portland, Maine 04101

No.	Date	Description
		Revision Schedule



JOB NO.  
195210852

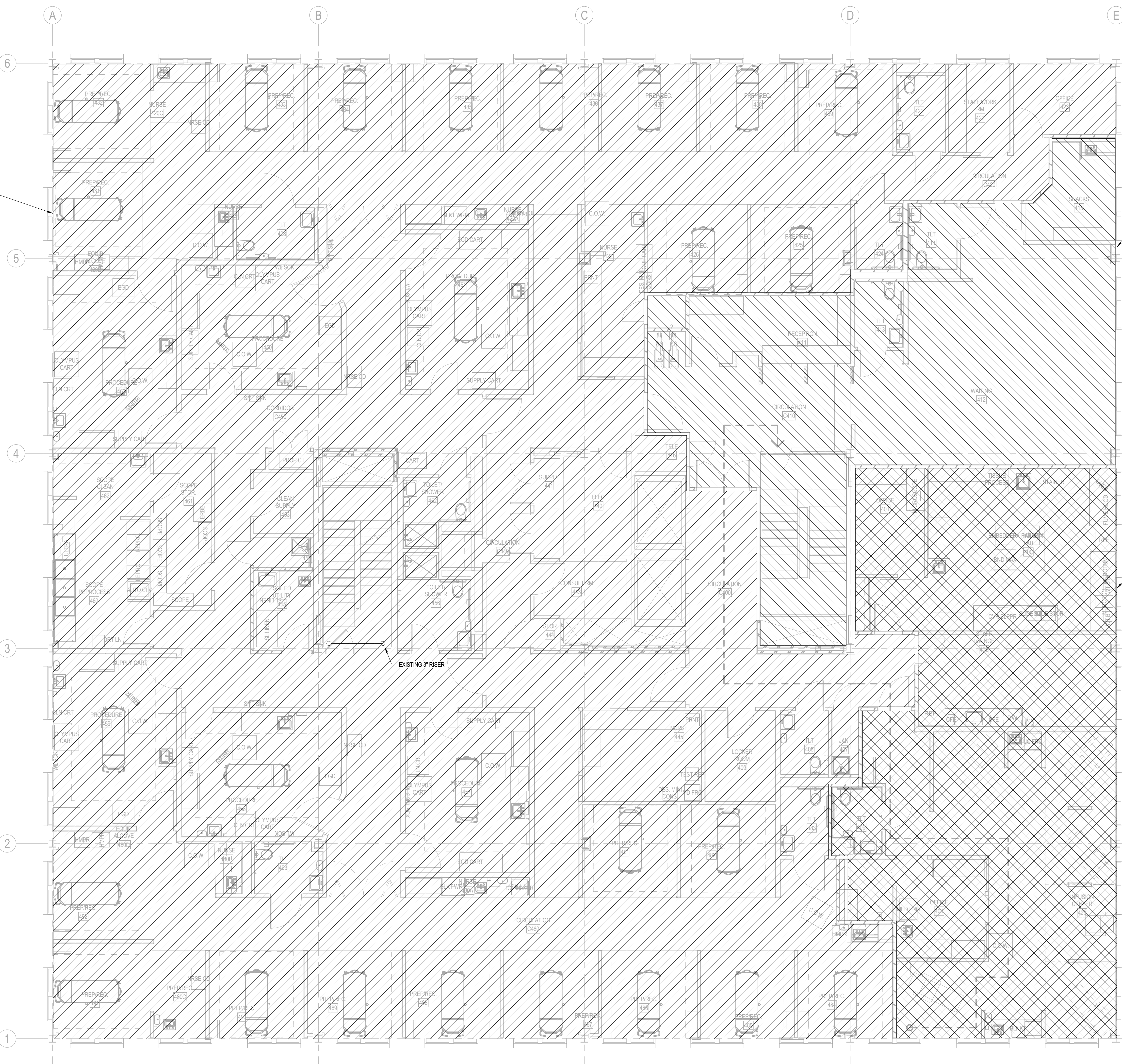
DRWN: CHK  
ERD: CMP

SCALE:

ISSUE  
PERMIT SET  
3/18/2016

TITLE  
FIRE PROTECTION  
LEVEL 4 AND 5  
NEW PLAN

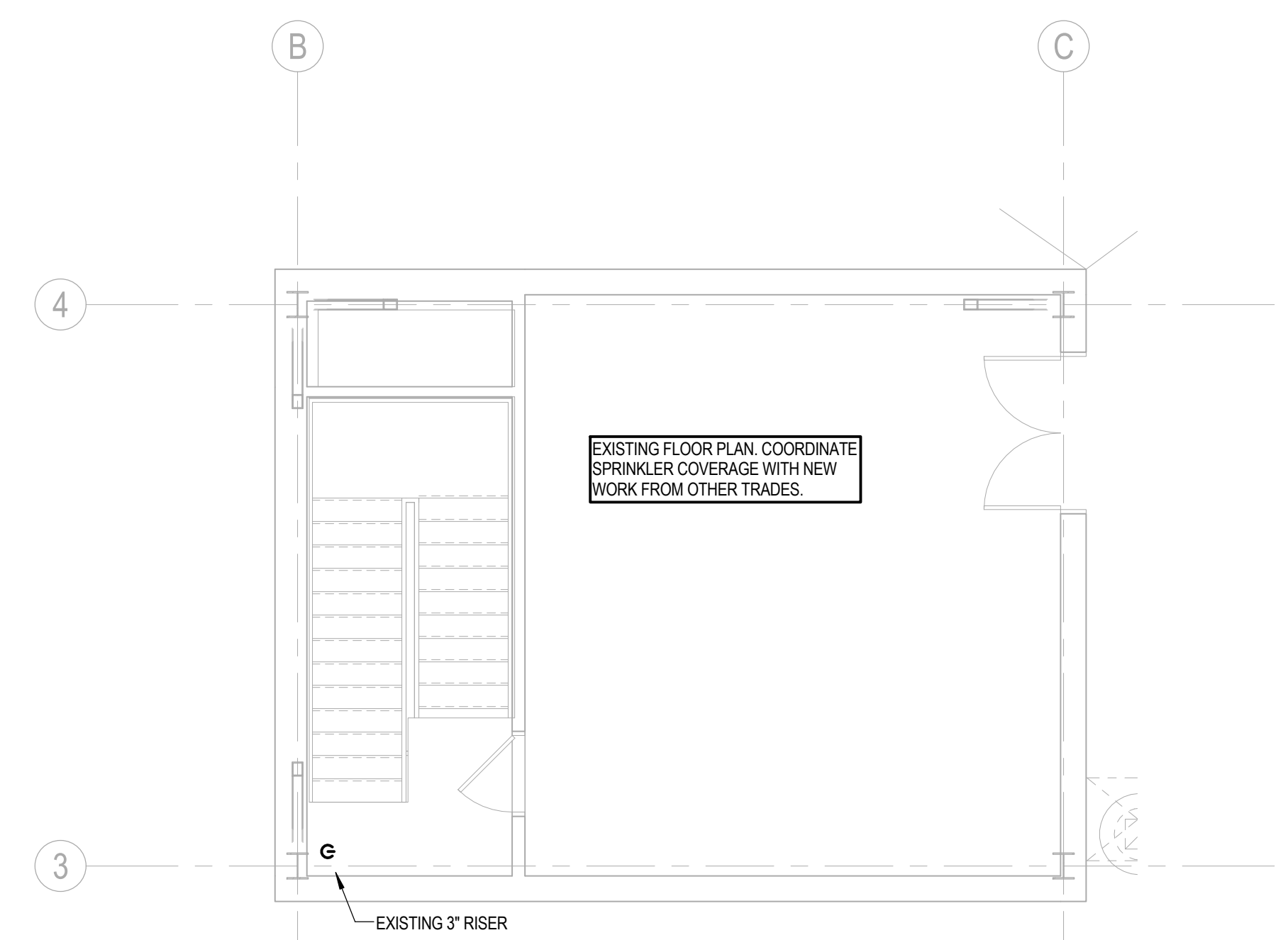
SHEET  
**F102**



AMBULATORY CARE AREA 1 SMOKE COMPARTMENT. REFER TO A003. NEW CEILING AND FLOOR PLAN. REMOVE EXISTING SPRINKLER HEADS AND SELECT PIPING. DESIGN AND INSTALL NEW SPRINKLER LAYOUT PER NFPA 13 AND LOCAL CODES.

AMBULATORY CARE AREA 2 SMOKE COMPARTMENT. REFER TO A003. NEW CEILING AND FLOOR PLAN. REMOVE EXISTING SPRINKLER HEADS AND SELECT PIPING. DESIGN AND INSTALL NEW SPRINKLER LAYOUT PER NFPA 13 AND LOCAL CODES.

BUSINESS SMOKE COMPARTMENT. REFER TO A003. NEW CEILING AND FLOOR PLAN. REMOVE EXISTING SPRINKLER HEADS AND SELECT PIPING. DESIGN AND INSTALL NEW SPRINKLER LAYOUT PER NFPA 13 AND LOCAL CODES.



**2 FIRE PROTECTION LEVEL 5 NEW PLAN**  
 3/16" = 1'-0"

**1 FIRE PROTECTION LEVEL 4 NEW PLAN**  
 3/16" = 1'-0"



Stantec Consulting Services Inc.  
 482 Payne Road Scarborough Court  
 Scarborough, ME 04074-8929  
 Tel: (207) 883-3355 / Fax: (207) 883-3376  
 www.stantec.com