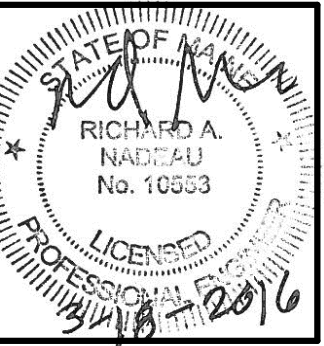


No.	Date	Description

Revision Schedule



JOB NO.  
195210852

DRWN. CHK  
MLC Checker

SCALE:

ISSUE  
PERMIT SET  
3/18/2016

TITLE  
ELECTRICAL LIGHTING LEVEL 3 NEW PLAN

SHEET  
EL101

**Lighting Control System:**

The lighting controls designed to meet the control requirements as defined in the ASHRAE/IES 90.1-2007 energy standard.

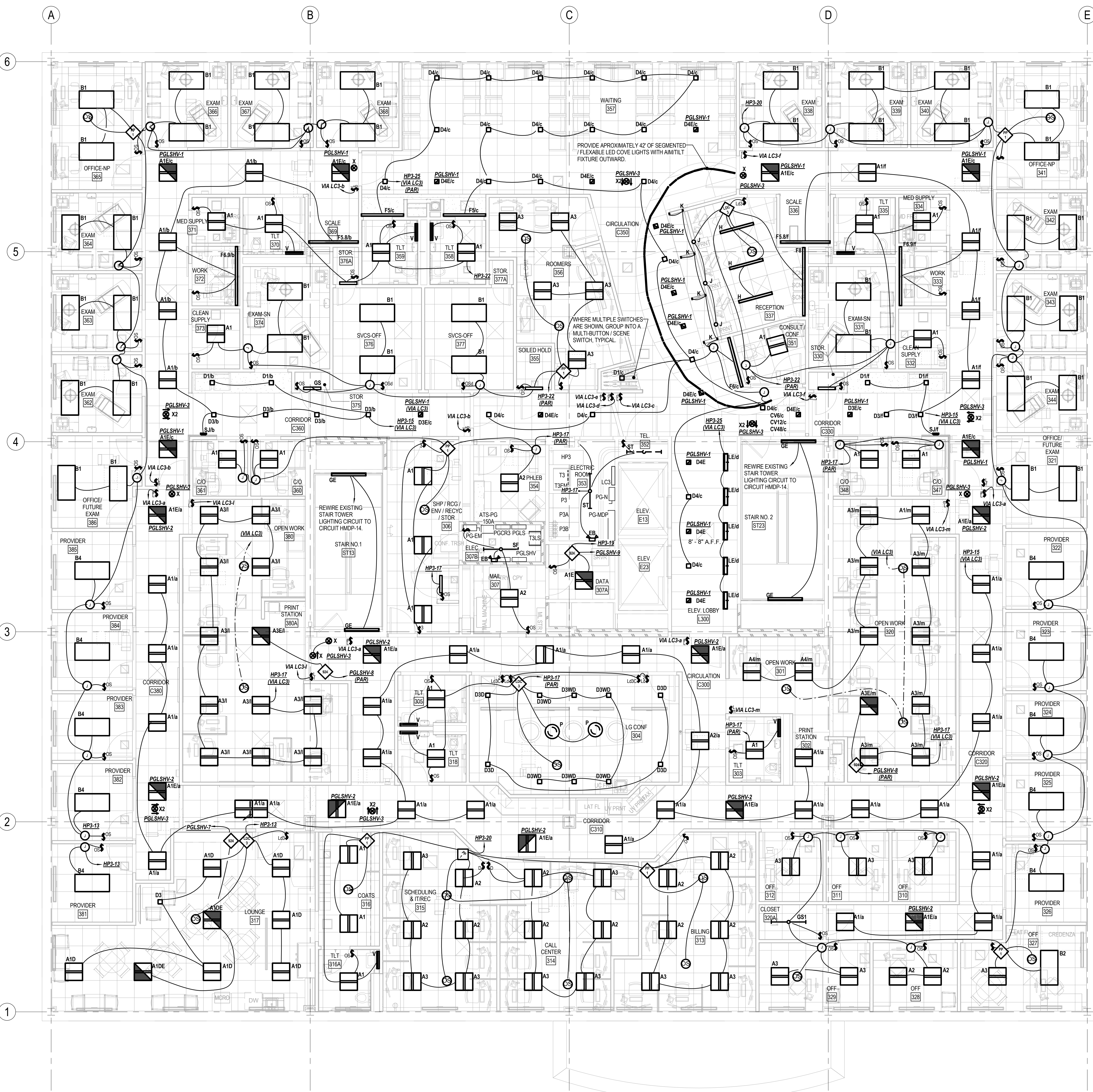
The control system shall be programmable at a microprocessor-based central processing unit. The system shall provide weekly routine and annual holiday scheduling and automatically adjust for leap year and daylight savings time.

Provide lighting controls to automatically shut off building lighting in all spaces. At 6:00 PM or hour as defined by tenant, the control system will blink several times, warning users that the common area lights will turn OFF in five minutes. At 6:05 PM, the control system will turn the common area lighting OFF. Users working after hours may keep the lights ON, or turn the lights back ON, by logging the manual wall switches, which function as a 120-minute override for the timeclock automatic shutoff system.

After 120 minutes, the system will blink the lights again, and sweep them OFF five minutes later unless the override is again activated.

The interior lighting controls will enact the following strategies intended to minimize energy consumption:

- 1) Common areas shall be control via a timeclock-based low-voltage control system using a central lighting control panel. Provide time schedules based on Portland Gastro's hours of operation and staff hours for 3rd and 4th floor.
- 2) Provide automatic shutoff via single load wall mounted occupancy sensors in small, enclosed offices and exam rooms.
- 3) Kitchenette areas, and multi-user offices shall have a ceiling mounted occupancy sensor and wall switch.
- 4) In presentation spaces, such as the conference and training rooms, the controls shall provide flexibility to enable users to select preset scenes light levels.
- 5) Each open office area shall be controlled by a combination of manual wall switches and timeclock schedule functionality residing in the low-voltage relay panel-based control system. Provide ceiling mounted occupancy sensors to maintain/override time schedule for staff on site after hours.
- 6) The following spaces have local dimming controls for up to 3 zones, ceiling mounted occupancy sensor with scene switch: Reception 337, Training Room/Lounge 317, LG Conf. 304, Reception 411, Procedure Rooms 1-6, Pathology lab 400.
- 7) The following spaces have networked dimming controls with 924 relays for up to 3 zones, with scene switch to set normal and emergency fixtures to 4 preset scenes and raise/lower buttons: at Circulation corridors near patient Prep and Recovery C480 & C420.



**1 ELECTRICAL LIGHTING LEVEL 3 NEW PLAN**  
 3/16" = 1'-0"



Stantec Consulting Services Inc.  
 480 Payne Road Scarborough Court  
 Scarborough, ME 04074-8929  
 Tel: (207) 883-3355 / Fax: (207) 883-3376  
 www.stantec.com