

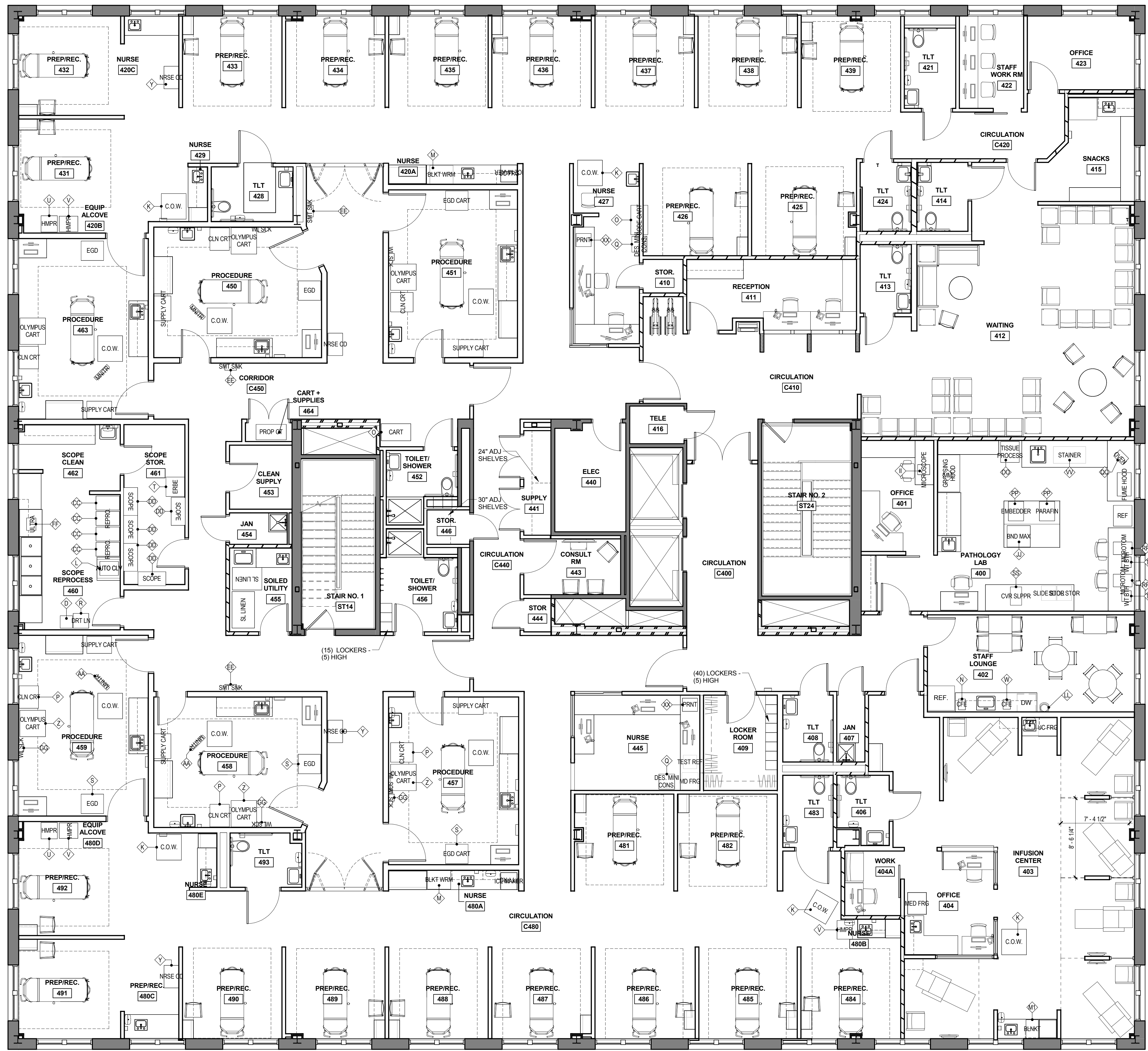


COPYRIGHT 2016
PDT Architects
Reuse or reproduction of the contents of this document is not permitted without written permission of PDT Architects.

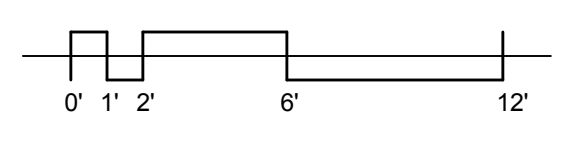
PORTLAND GASTROENTEROLOGY CENTER
 161 Marginal Way Portland, Maine

Type mark	Family and Type	Type	DEPTH	WIDTH	HEIGHT	Count
	PDT Coat Hook - Single: 60" Height	60" Height				3
	Corner Guard: 1 1/2" Corner Guard	1 1/2" Corner Guard				116
	Corner Guard: 3" Corner Guard	3" Corner Guard				53
	Equipment - Endo: SOILED LINEN	SOILED LINEN	2'-5"	3'-11"	5'-6"	1
	Equipment - Endo: SOILED LINEN 2	SOILED LINEN 2	2'-5"	3'-2"	3'-0"	1
	Equipment - Endo: SUPPLY CART	SUPPLY CART	1'-10"	2'-8"	4'-10"	6
	Equipment - Endo: VAC CO	VAC CO	7"	1'-0"	6"	1
	Equipment - Pathology: Leica Slide Storage	Leica Slide Storage	1'-7"	1'-7"	3'-0"	2
	Furniture-Workstation-Midmark-Care_Exchange: 6201-002 MD3X-MM	MD3X-MM				14
	Medicine Cabinet: Sharps disposal	Sharps disposal				1
	Medicine Cabinet: Surface Mounted	Surface Mounted				5
	PT Dispenser - Recessed: Default	Default				1
	Television_Wall Mount_Panasonic: 24" tv	24" tv				6
	Television_Wall Mount_Panasonic: Medium TV	Medium TV				1
A	Equipment - Office: Bravo Capsule/Pill Cam	Bravo Capsule/Pill Cam	1'-3"	1'-4"	1'-0"	1
AA	Equipment - Endo: OLYMPUS MONITORS	OLYMPUS MONITORS	5"	1'-11 1/2"	1'-4"	5
BB	Equipment - Endo: PROP CART	PROP CART	1'-8"	3'-3"	3'-9"	1
C	Equipment - Office: Fax Machine	Fax Machine	1'-3"	1'-4"	1'-0"	1
CC	Equipment - Endo: REPROSESOR	REPROSESOR	2'-6 1/4"	1'-6"	3'-2 1/2"	4
D	Equipment - Endo: TRASH	TRASH	1'-4"	1'-4"	3'-0"	1
DD	Equipment - Endo: Scope Cleaner TALL	Scope Cleaner TALL	1'-6"	3'-0"	7'-8"	5
E	Equipment - Office: Large Copier	Large Copier	2'-6"	2'-2"	2'-6"	2
EE	Equipment - Endo: SMART SINK	SMART SINK	9"	1'-3"	1'-1"	3
F	Equipment - Office: Mail Machine	Mail Machine	1'-7"	3'-6"	1'-3"	1
FE	Fire Extinguisher Cabinet: 9 1/2 x 4 1/2 x 24"	9 1/2 x 4 1/2 x 24"				8
FF	Equipment - Endo: ULTRASONIC CLEANER	ULTRASONIC CLEANER	1'-0"	1'-4"	1'-2 1/2"	1
G	Equipment - Office: Scanner	Scanner	1'-3"	1'-4"	1'-0"	3
GG	Equipment - Endo: WALL SUCTION	WALL SUCTION	7"	1'-2"	1'-2"	5
HH	Equipment - Office: CONF. TRASH	CONF. TRASH	2'-0"	2'-0"	3'-4"	1
I	Equipment - Office: HICFA + UV PRINTER	HICFA + UV PRINTER	1'-4"	1'-4"	1'-4"	2
J	Equipment - Pathology: Leica Microscope	Leica Microscope DM2000	1'-3 21/32"	1'-1 1/16"	1'-8 1/8"	1
JJ	Equipment - Office: MAIL SORTER	MAIL SORTER	1'-0"	3'-0"	3'-2"	1
JJ	Equipment - Office: Printer	Printer	1'-1 3/8"	1'-2 3/4"	1'-0"	3
JJ	Equipment - Pathology: Leica BondMax	Leica BondMax	2'-3 19/32"	2'-5 29/32"	2'-6 1/2"	1
K	Equipment - Endo: COMPUTER ON WHEELS	COMPUTER ON WHEELS	2'-9"	2'-8"	4'-10"	11
KK	Equipment - Pathology: AirFiltrax Corp - Fume Hood	AirFiltrax Corp - Fume Hood	1'-6"	2'-6"	2'-8 1/2"	1
L	Equipment - Endo: Autoclaves	Autoclaves	1'-6"	2'-0"	1'-6"	2
LL	Water_Cooler_-_Sunroc_ Legend	Water_Cooler_-_Sunroc_ Legend				2
M	Equipment - Endo: BLANKET WARMER	BLANKET WARMER	2'-0"	2'-6"	3'-0"	2
M1	Equipment - Endo: BLANKET WARMER INFUSION	BLANKET WARMER INFUSION	2'-0"	1'-4"	1'-9 1/8"	1
MM	Equipment - Pathology: ThermoScientific - Gross Lab Jr.	ThermoScientific - Gross Lab Jr.	2'-4"	4'-0"	6'-6 1/2"	1
N	Equipment - Endo: BLOOMFIELD COFFEE MAKER	BLOOMFIELD COFFEE MAKER	1'-2"	9"	1'-10"	1
NN	HP_Laser_Printer_-_Hewlett_Packard_DeskJet_2200	HP_Laser_Printer_-_Hewlett_Packard_DeskJet_2200	1'-3 15/16"	1'-3 11/32"	9 27/32"	2
O	Equipment - Endo: CODE CART AND ZOLL MACH.	CODE CART AND ZOLL MACH.	1'-10"	3'-2"	3'-2"	2
OO	Equipment - Pathology: Leica - Tissue Processor / ASP300S	Leica - Tissue Processor / ASP300S	2'-3"	2'-0"	4'-4"	1
P	Equipment - Endo: COLON CART	COLON CART	2'-5"	2'-1"	3'-8"	6
PP	Equipment - Pathology: Leica Paraffin Embedder	Leica Paraffin Embedder	2'-1 3/16"	1'-7 11/16"	1'-2 3/16"	2
Q	Equipment - Endo: CONFIDENTIAL DES. MINI CONSOLE	CONFIDENTIAL DES. MINI CONSOLE	1'-7 1/2"	1'-8 1/4"	2'-2"	2
QQ	Equipment - Pathology: Fisher Scientific Oven - 664 Isotemp	Fisher Scientific Oven - 664 Isotemp	11 1/2"	1'-4"	1'-4"	1
R	Equipment - Endo: DIRTY LINEN HAMPER	DIRTY LINEN HAMPER	1'-7"	1'-8"	3'-2"	1
RR	Equipment - Pathology: Leica Microtome RM2245 / 2440/08	Leica Microtome RM2245 / 2440/08	2'-0 11/32"	1'-4 1/4"	1'-0"	2
SS	Equipment - Endo: EGG CART	EGG CART	2'-1"	2'-5"	3'-8"	6
SS	Equipment - Pathology: Leica - Cover Slipper CV 5030	Leica - Cover Slipper CV 5030	1'-11 5/8"	1'-2 19/32"	3'-2 19/32"	1
T	Equipment - Endo: ERBE MACHINE AND CART	ERBE MACHINE AND CART	2'-0"	2'-1"	3'-11"	1
TT	Equipment - Pathology: Leica Waterbath / HI1210 / 10466/06/12	Leica Waterbath / HI1210 / 10466/06/12	1'-0 3/16"	1'-1 25/32"	3 15/16"	2
U	Equipment - Endo: Hamper	Hamper	1'-9"	1'-9"	2'-8"	2
V	Equipment - Endo: HAMPER CLEAN AND DAMAGED	HAMPER CLEAN AND DAMAGED	2'-0"	1'-8"	3'-0"	3
VV	Equipment - Pathology: Leica - Stainer ST5020	Leica - Stainer ST5020	1'-9 21/32"	3'-5 23/32"	2'-5 15/16"	1
W	Equipment - Endo: Keurig 8542	Keurig 8542	1'-0 1/4"	9 1/2"	1'-1 1/4"	1
XX	Equipment - Endo: KYOCERA FS-1135mfp	KYOCERA FS-1135mfp	1'-5"	1'-7 1/2"	1'-6"	2
Y	Equipment - Endo: NURSE CODE CART	NURSE CODE CART	2'-5"	1'-7"	3'-3"	4
Z	Equipment - Endo: OLYMPUS CART	OLYMPUS CART	2'-10"	2'-9"	6'-3"	6

MED FRIDGE - 22"D x 21"W x 28" H (IN PLAN QTY 1 NURSING 445)
 TEST STUOV FRIDGE - 17 1/2"D x 17 1/2"W x 20"H (IN PLAN QTY 1 NURSING 445)
 PATIENT FOOD FRG - 18"D x 17 1/2"W x 27"H (IN PLAN QTY 2 - NURSING SUB STATION)
 STAFF FOOD FRG - 22"D x 24 25" W x 62" H (CURRENT QTY 1 - INFUSION)
 ICE MAKER - 22"D x 21"W x 28"H (CURRENT QTY 2 - CENTRAL SUB NURSING)
 STAFF FRIDGE - FULL HT 35"W X 32" D (CURRENT QTY 1 - STAFF LOUNGE)

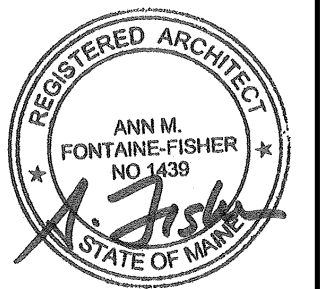


LEVEL 4 - EQUIPMENT AND FURNISHINGS
 3/16" = 1'-0"



3/18/2016 5:23:58 PM

No. | Date | Description
 Revision Schedule



JOB NO.
14054

DRWN. CHK
Checker

SCALE:

ISSUE
PERMIT SET
03/18/16

TITLE
LEVEL 4
EQUIPMENT AND
FURNISHINGS

SHEET
AF101