

**DOOR AND WINDOW NOTES**

1. PACK MINERAL-FIBER INSULATION IN ALL INTERIOR HOLLOW METAL FRAMES IN STUD WALLS.
2. REFER TO SPECIFICATIONS FOR LOCATIONS OF TEMPERED, LAMINATED, WIRED, AND INSULATING GLASS.
3. PROVIDE DOOR STOPS TO PROTECT WALLS AT ALL LOCATIONS WHERE A DOOR SWING WILL STRIKE THE WALL.
4. CONFIRM EXISTING HARDWARE TYPE/QUALITY OF "E" EXISTING DOORS TO REMAIN.

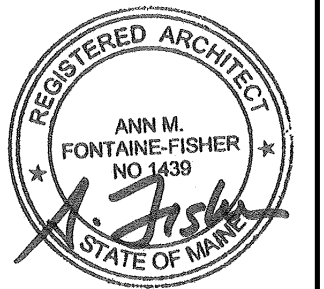


COPYRIGHT 2016 PDT Architects  
 Reuse or reproduction of the contents of this document is not permitted without written permission of PDT Architects.

**PORTLAND GASTROENTEROLOGY CENTER**  
 161 Marginal Way Portland, Maine

No. | Date | Description

Revision Schedule



JOB NO. 14054

DRWN, CHK Checker

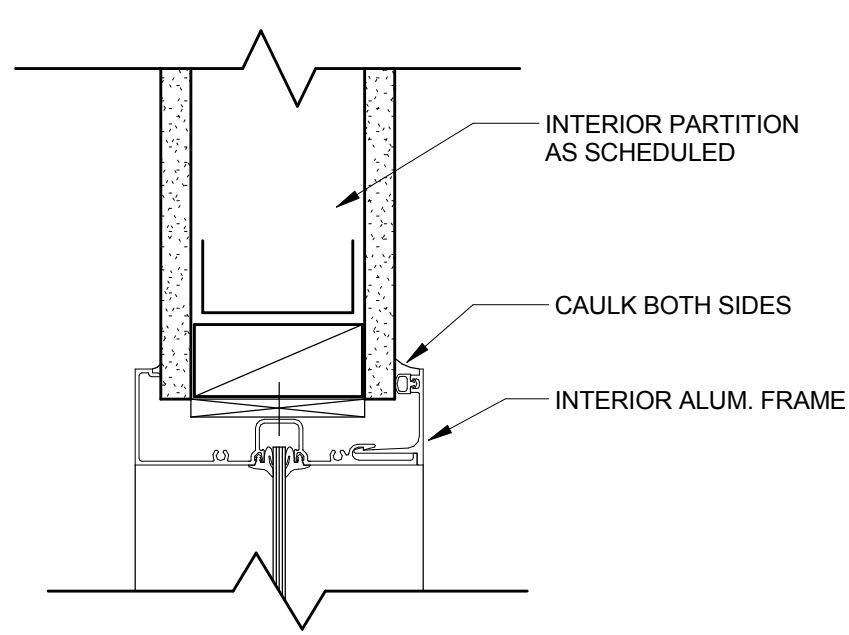
SCALE:

ISSUE PERMIT SET 03/18/16

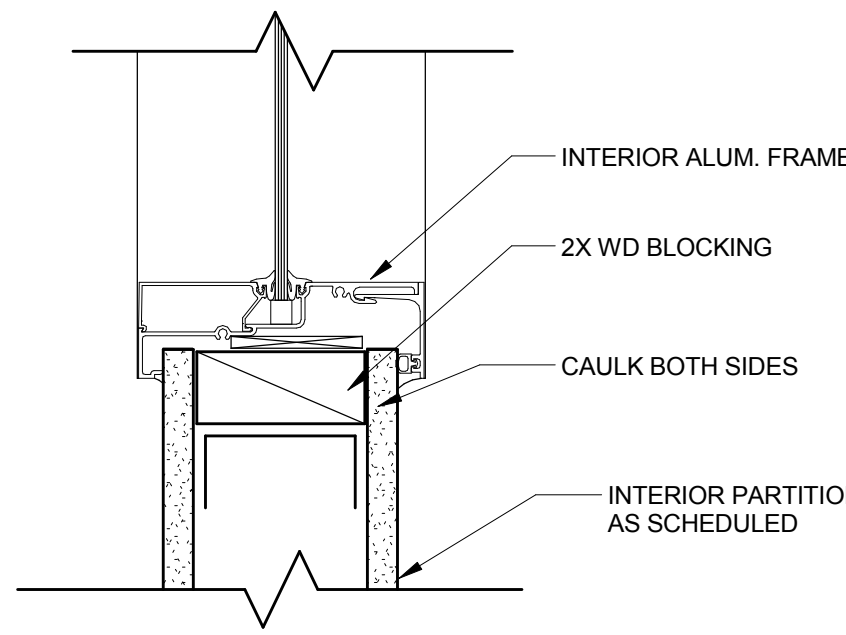
TITLE DOOR AND BORROWED LIGHT DETAILS

SHEET

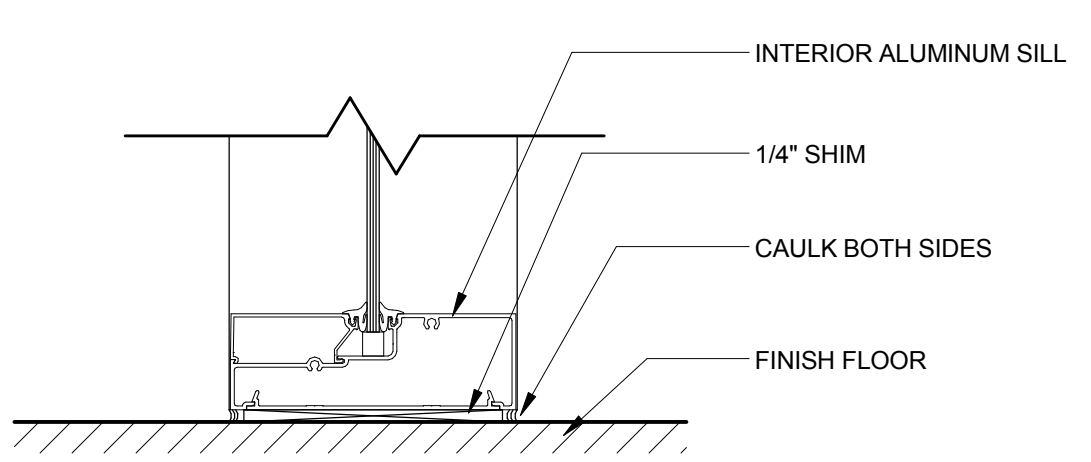
**A602**



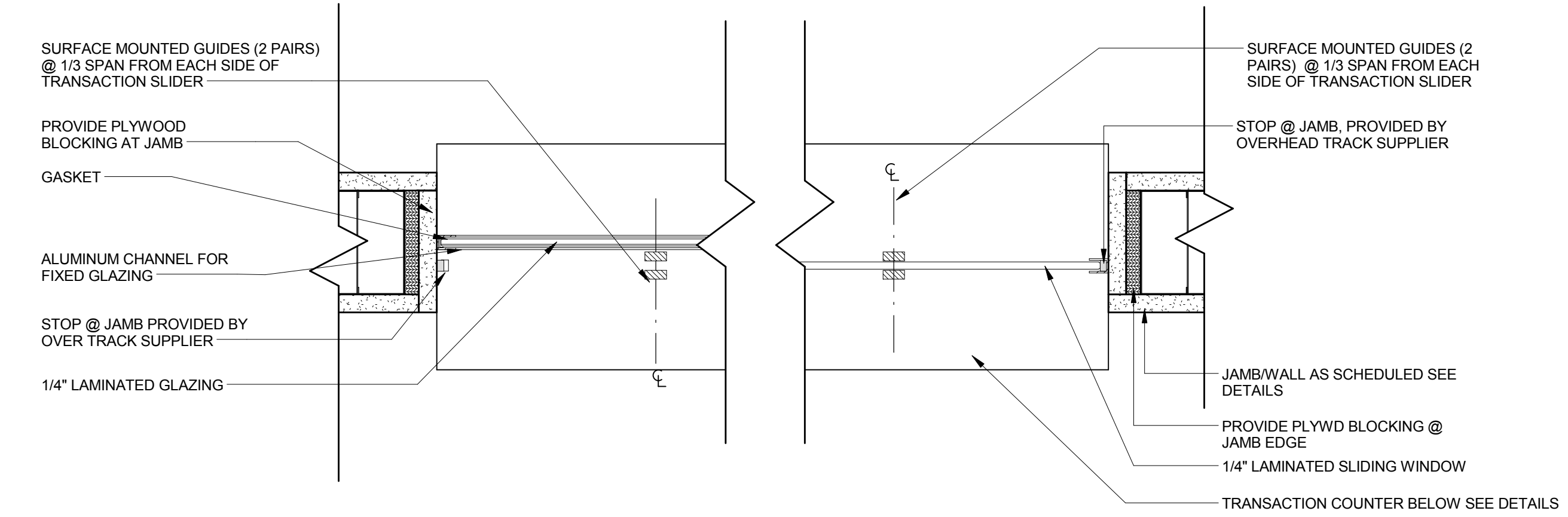
6E ALUM. HEAD/ JAMB SIM.  
3" = 1'-0"



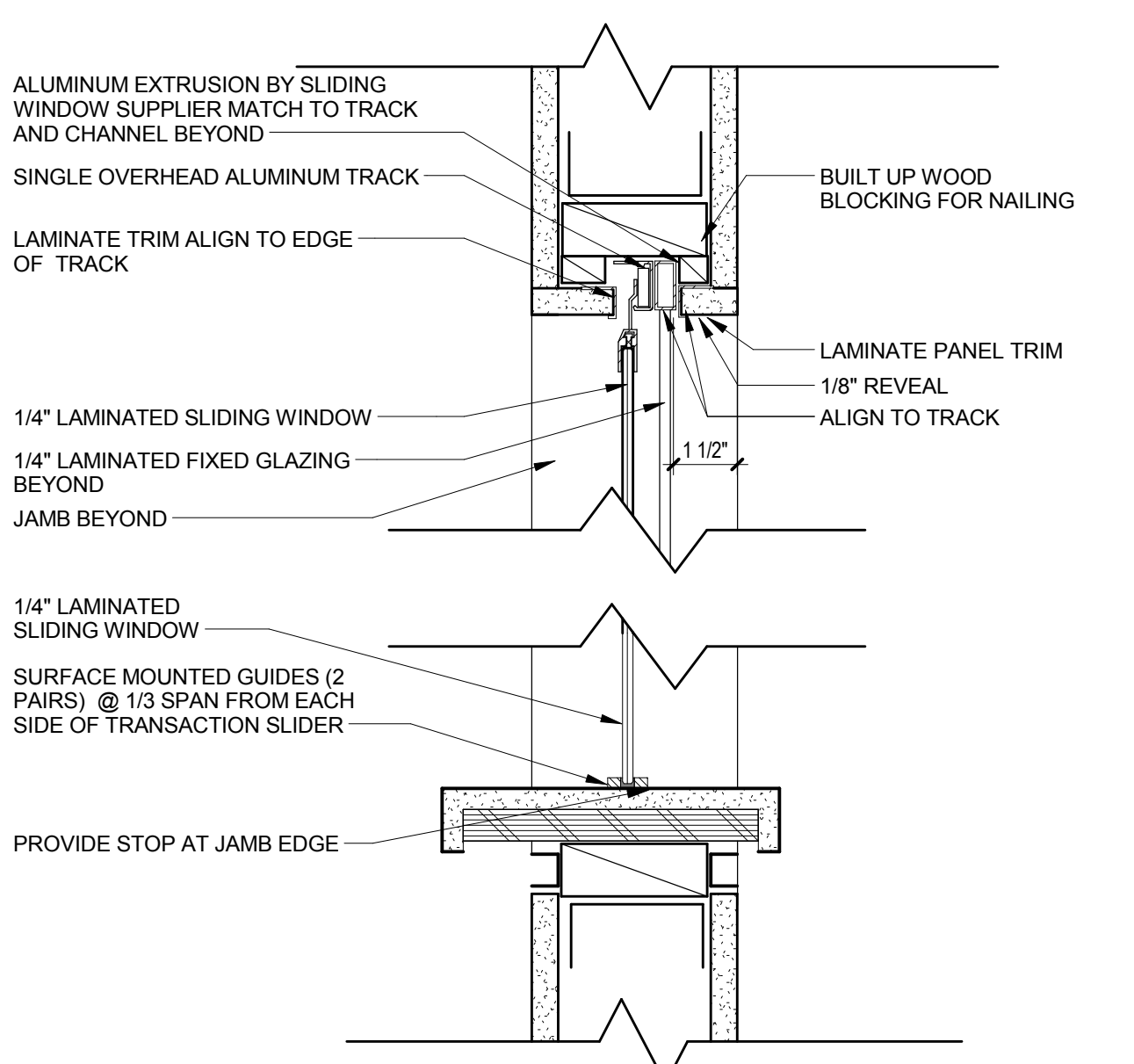
6D INTERIOR ALUMINUM SILL  
3" = 1'-0"



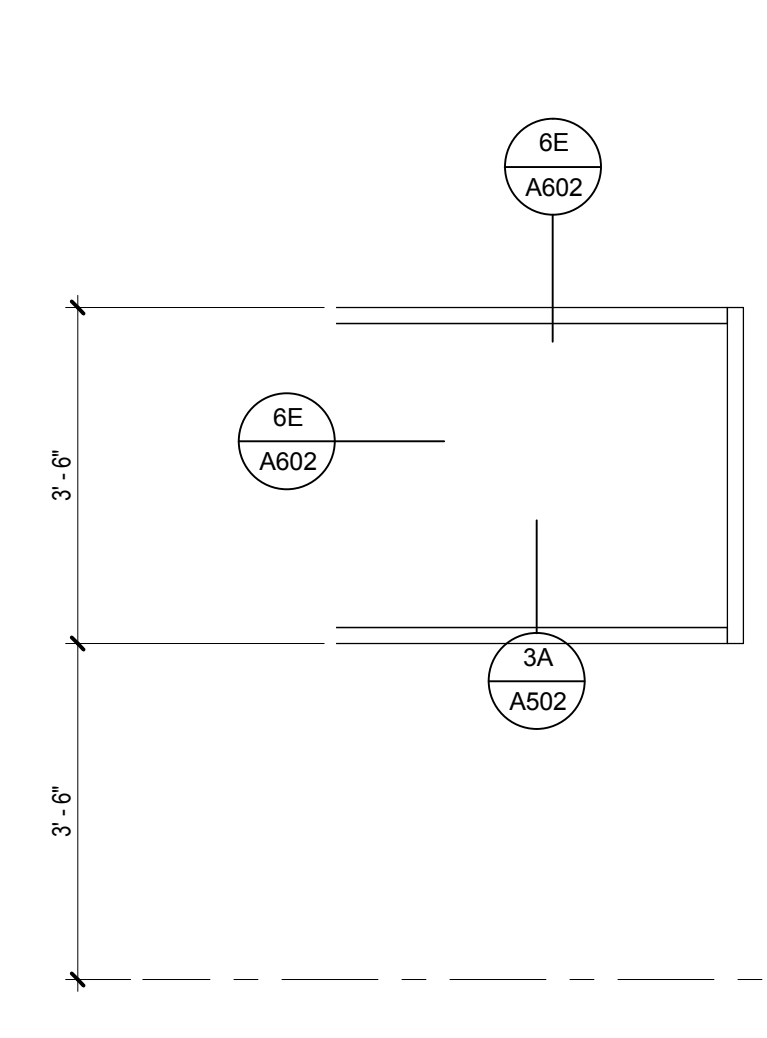
5D ALUM SILL @ FLOOR  
3" = 1'-0"



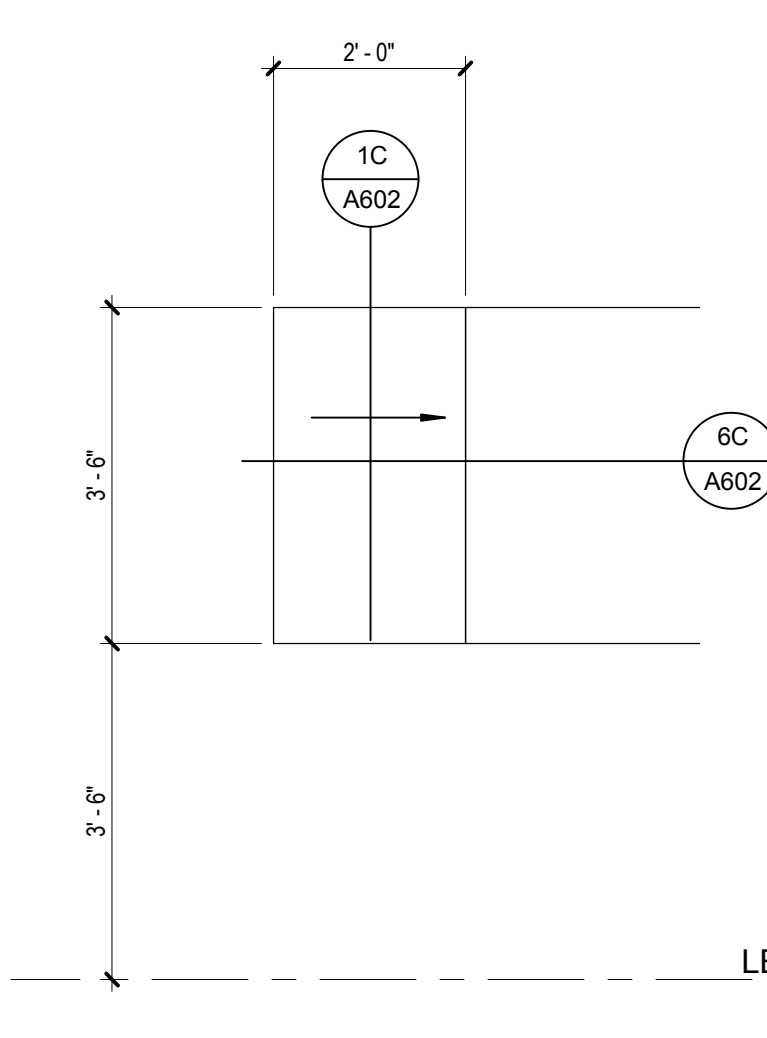
6C SLIDING WINDOW JAMB DETAILS  
3" = 1'-0"



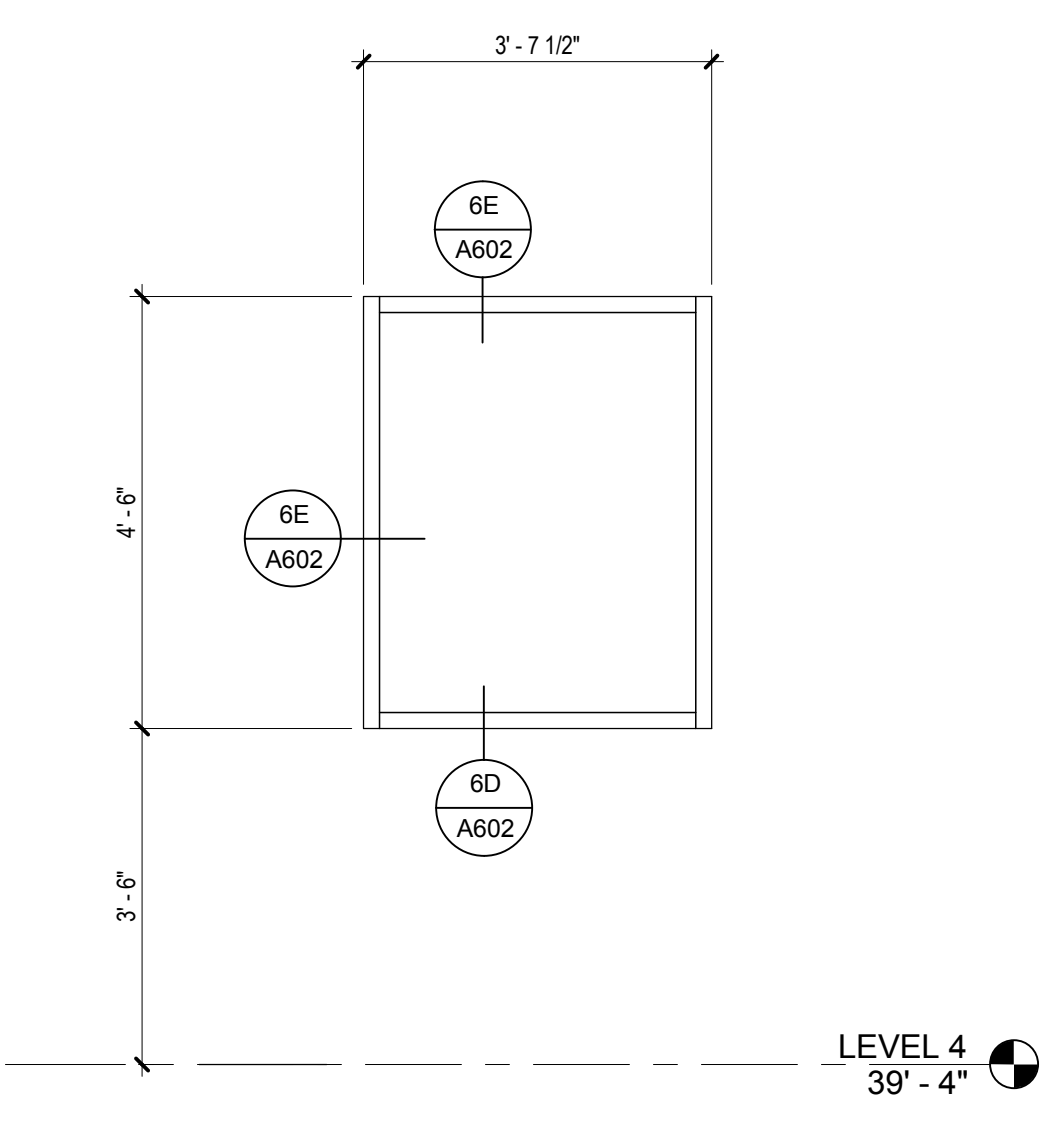
1C SECTION @ TRANSACTION COUNTER  
3" = 1'-0"



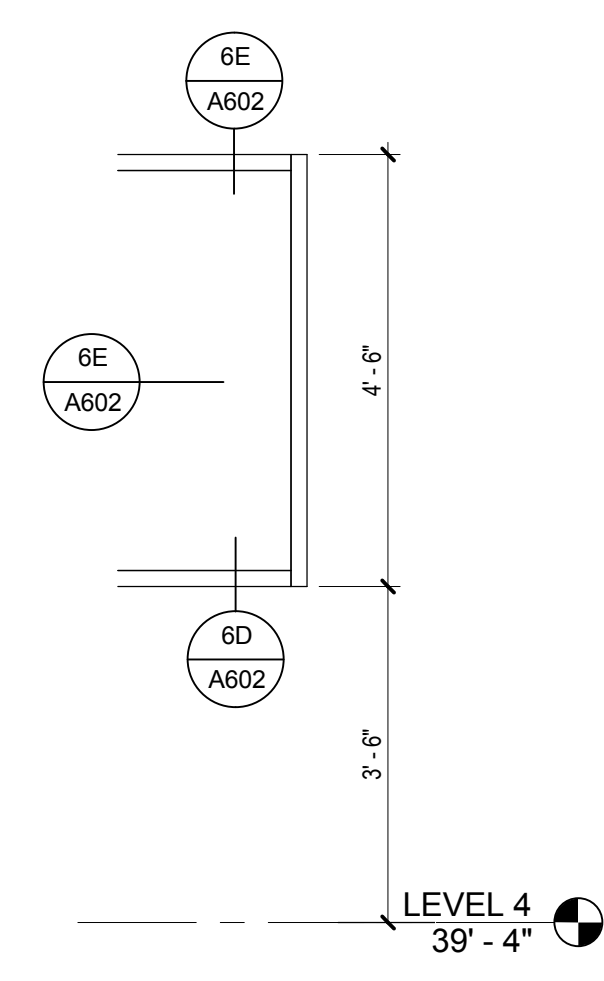
BL15



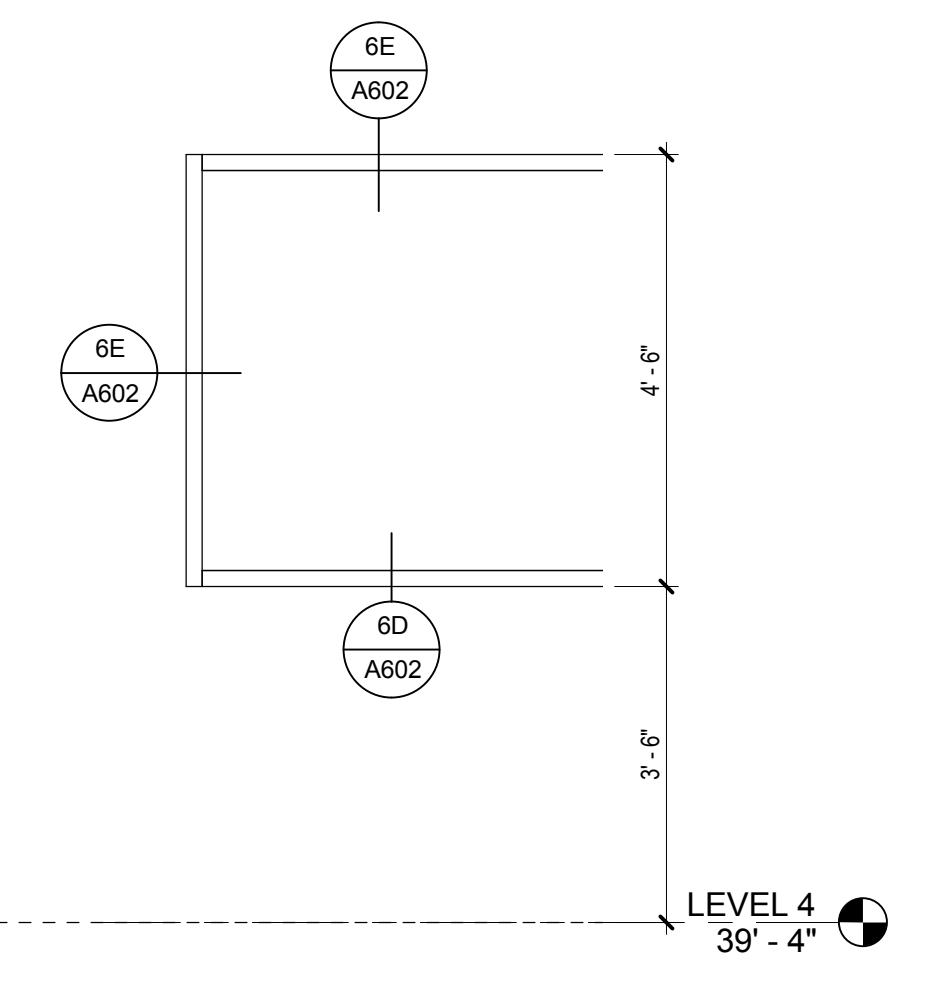
BL14



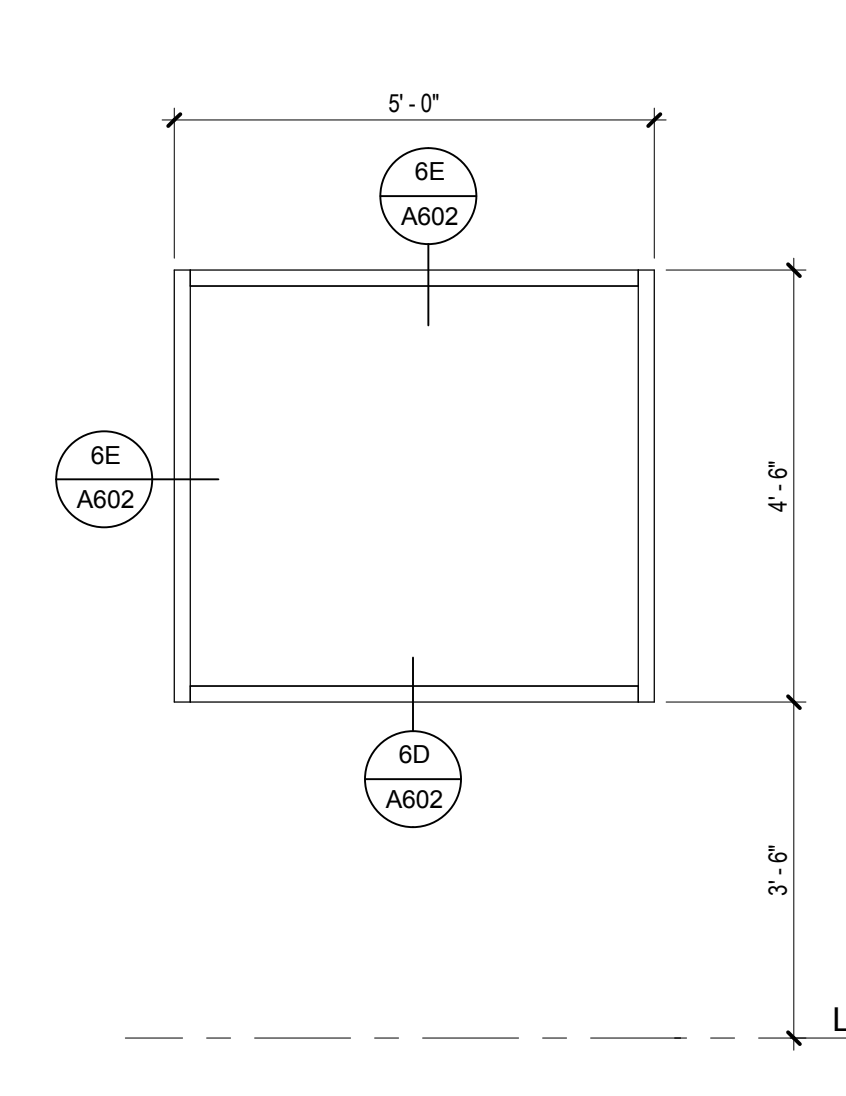
BL11



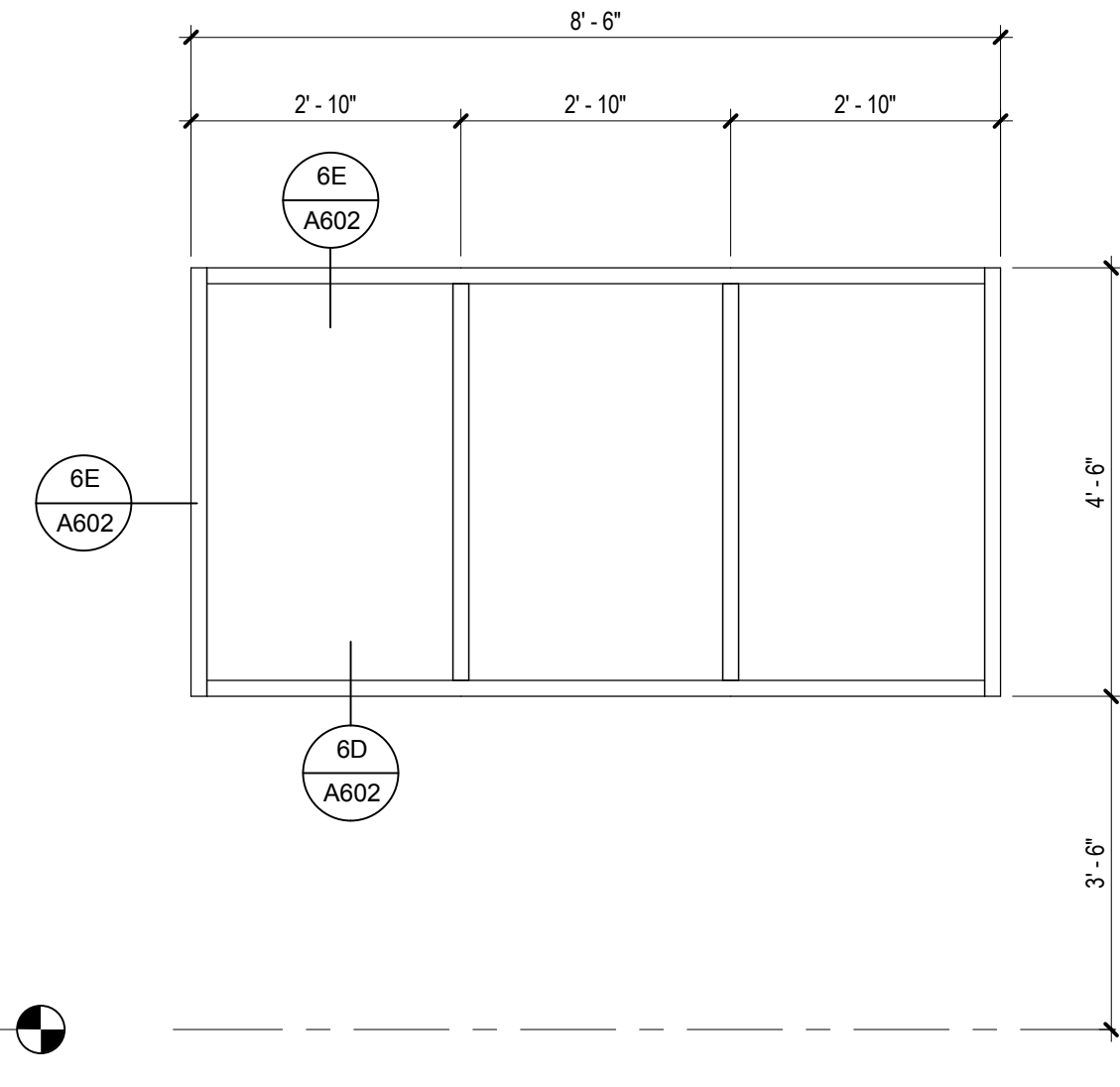
BL11



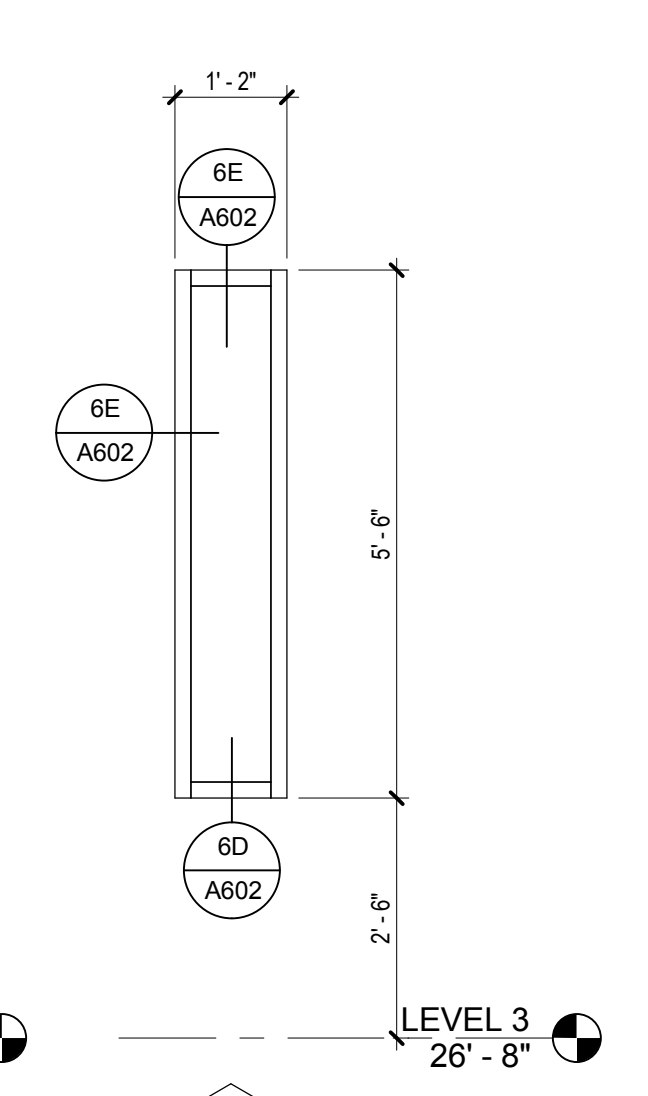
BL10



BL3



BL2



BL1