

INTERIOR GENERAL NOTES

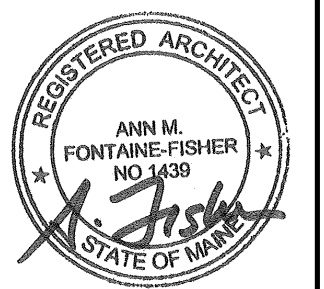
- 1. ALL CABINETS IN CLINICAL AREAS SHALL HAVE LOCKS
- 2. COUNTERTOPS AND WORK AREAS TO BE PLAM TYPICAL, UNLESS SEE NOTE BELOW
- 3. COUNTERTOPS IN WET AREAS, OR CONTAINING SINKS WILL BE SOLID SURFACE.



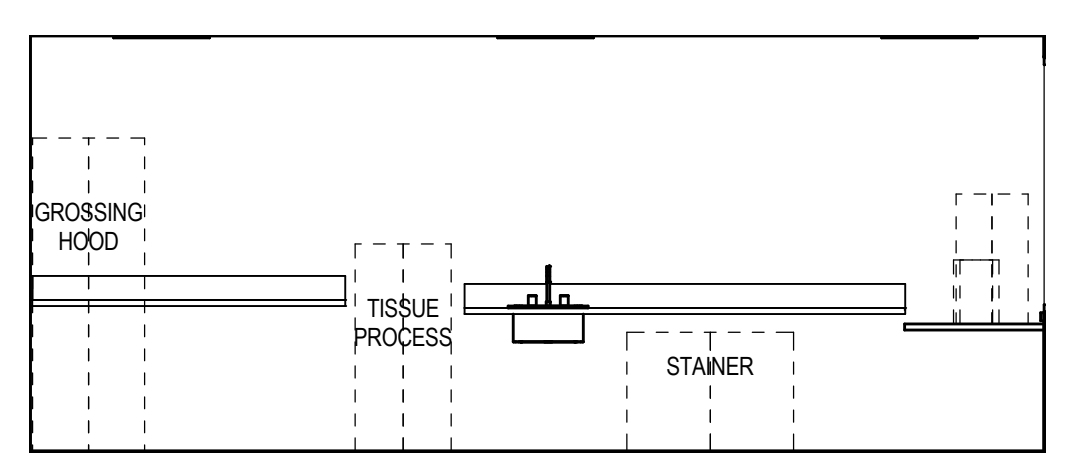
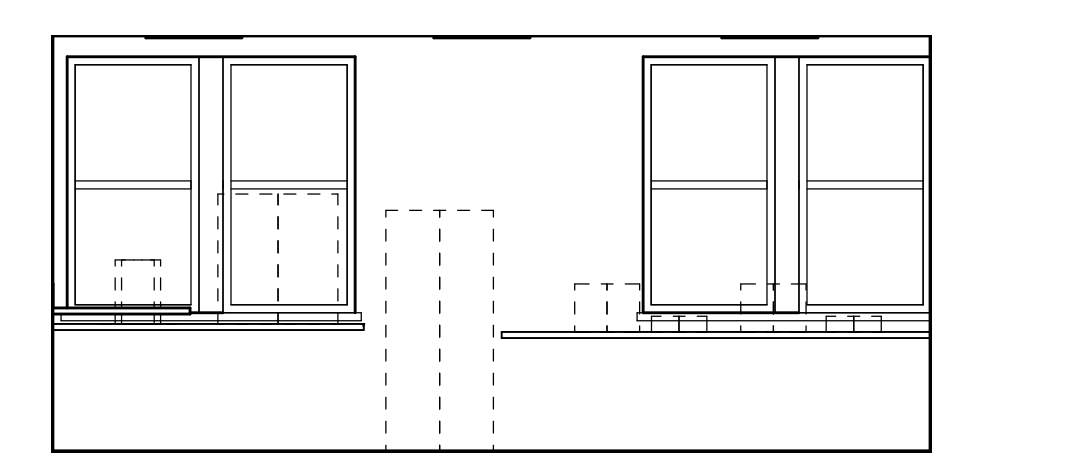
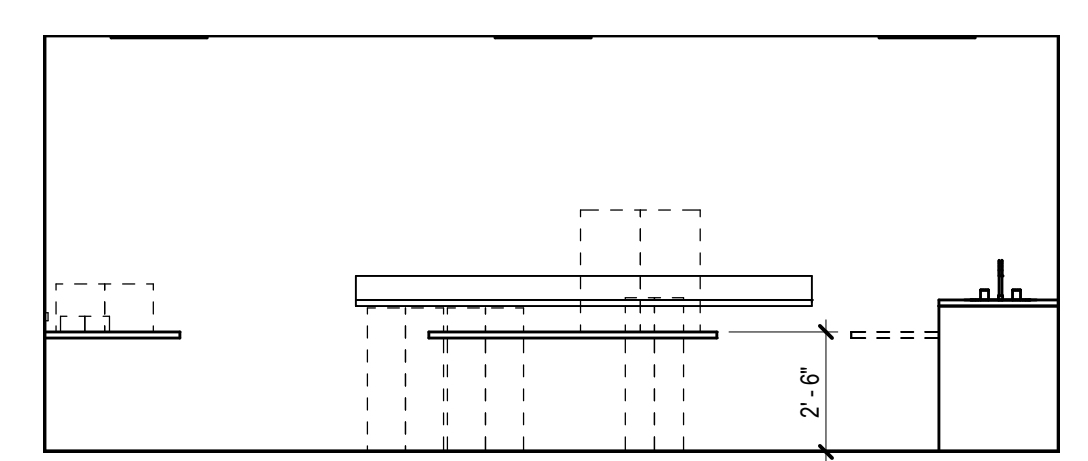
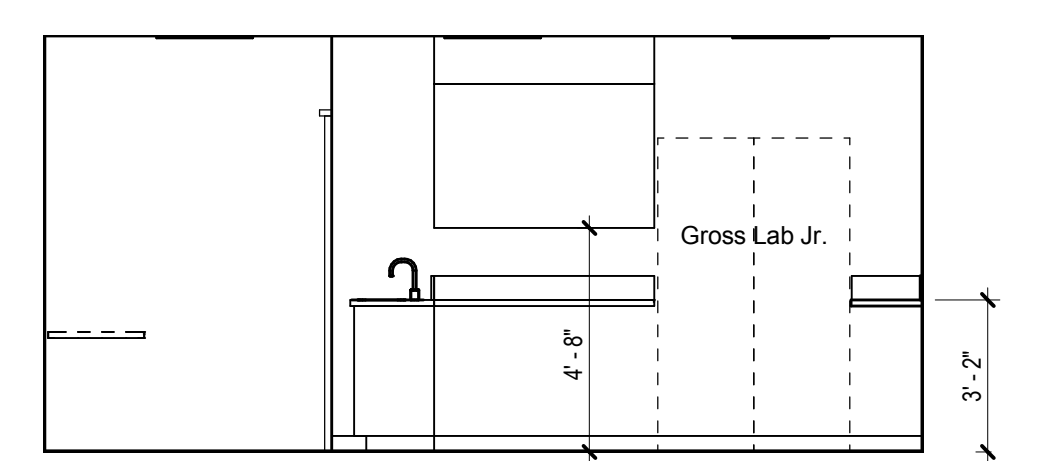
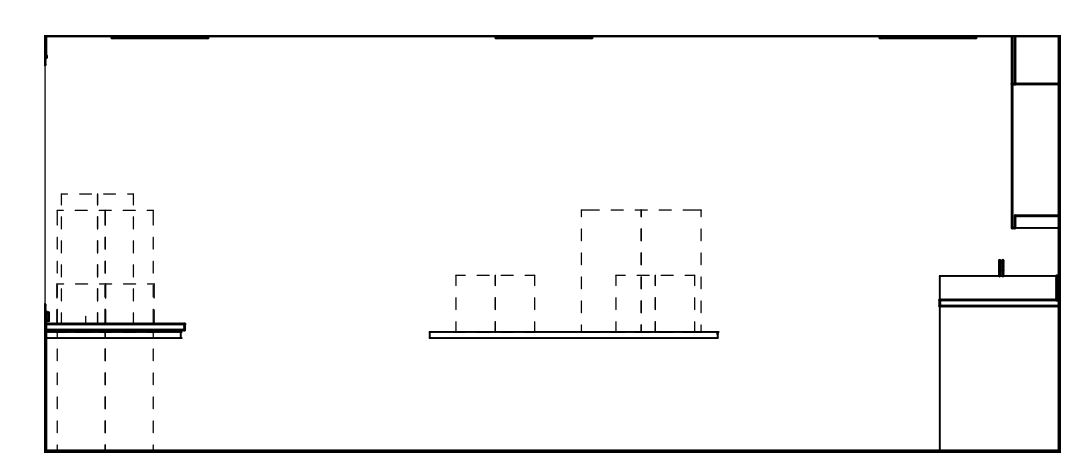
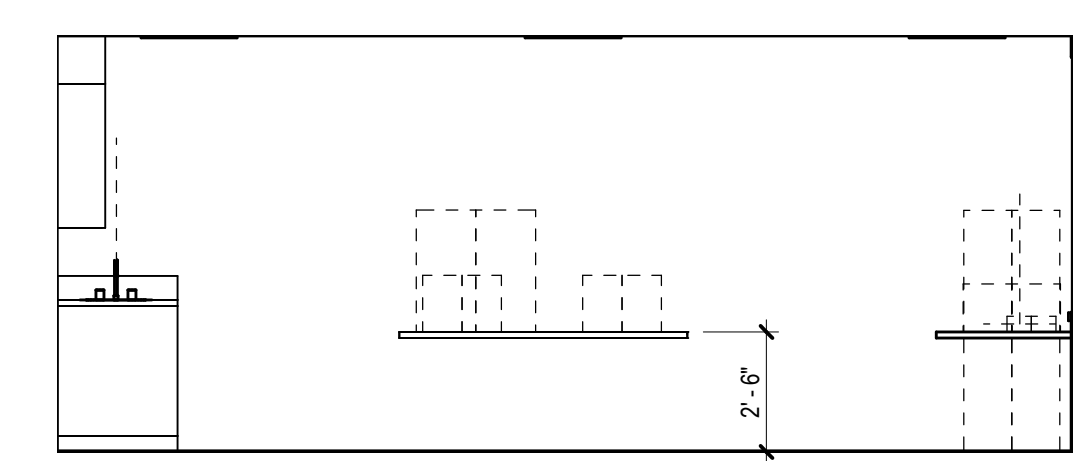
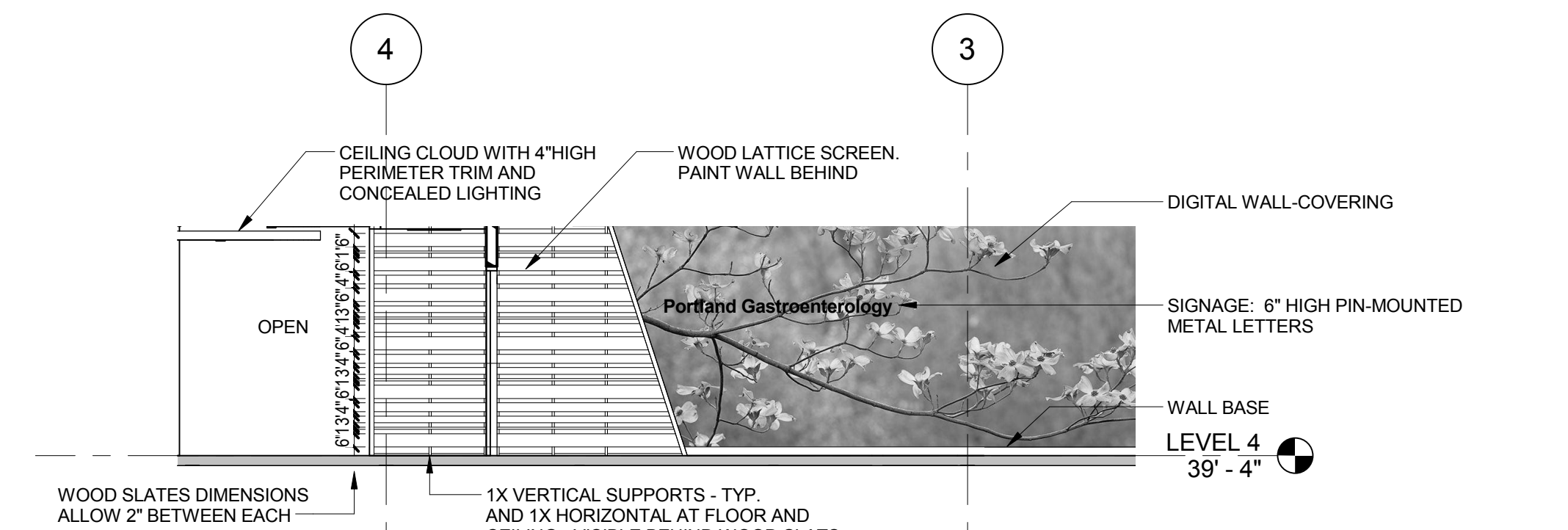
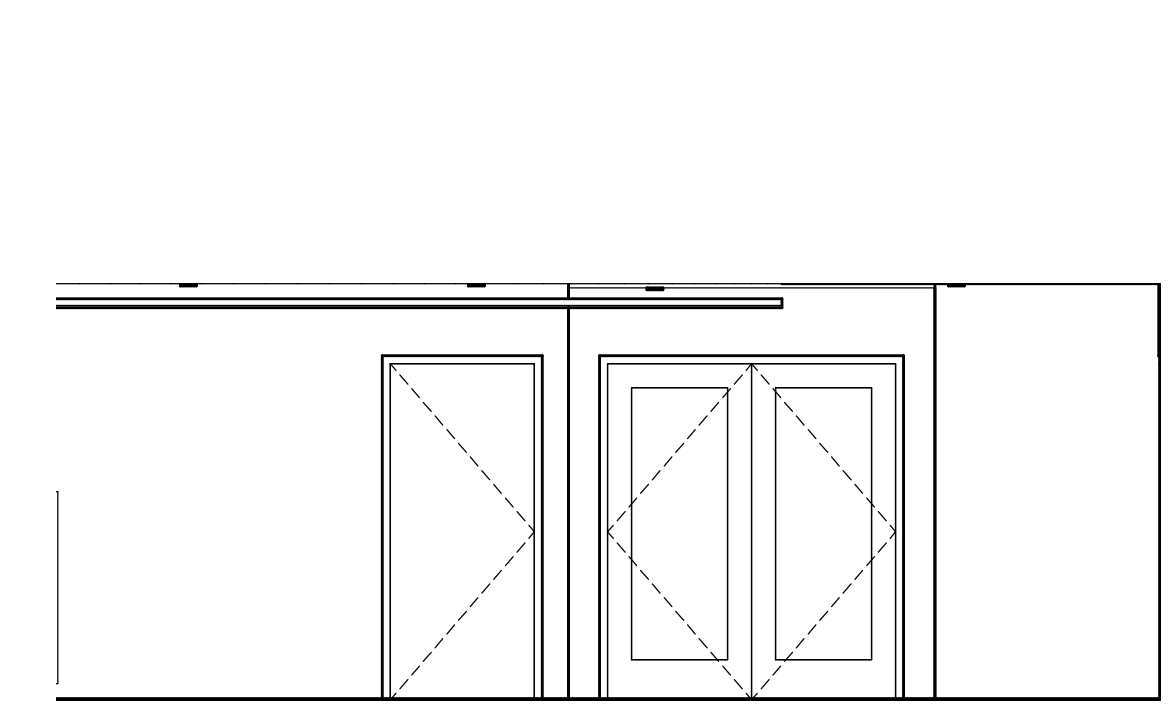
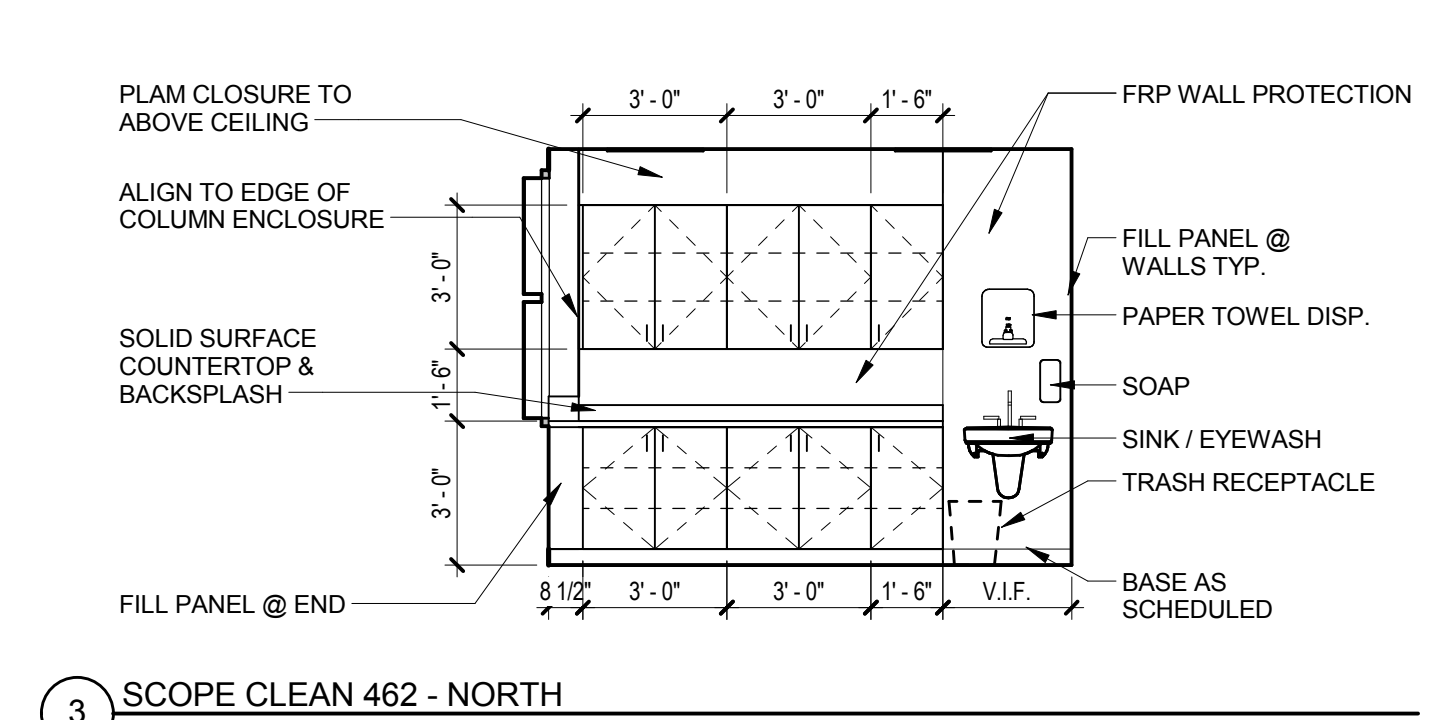
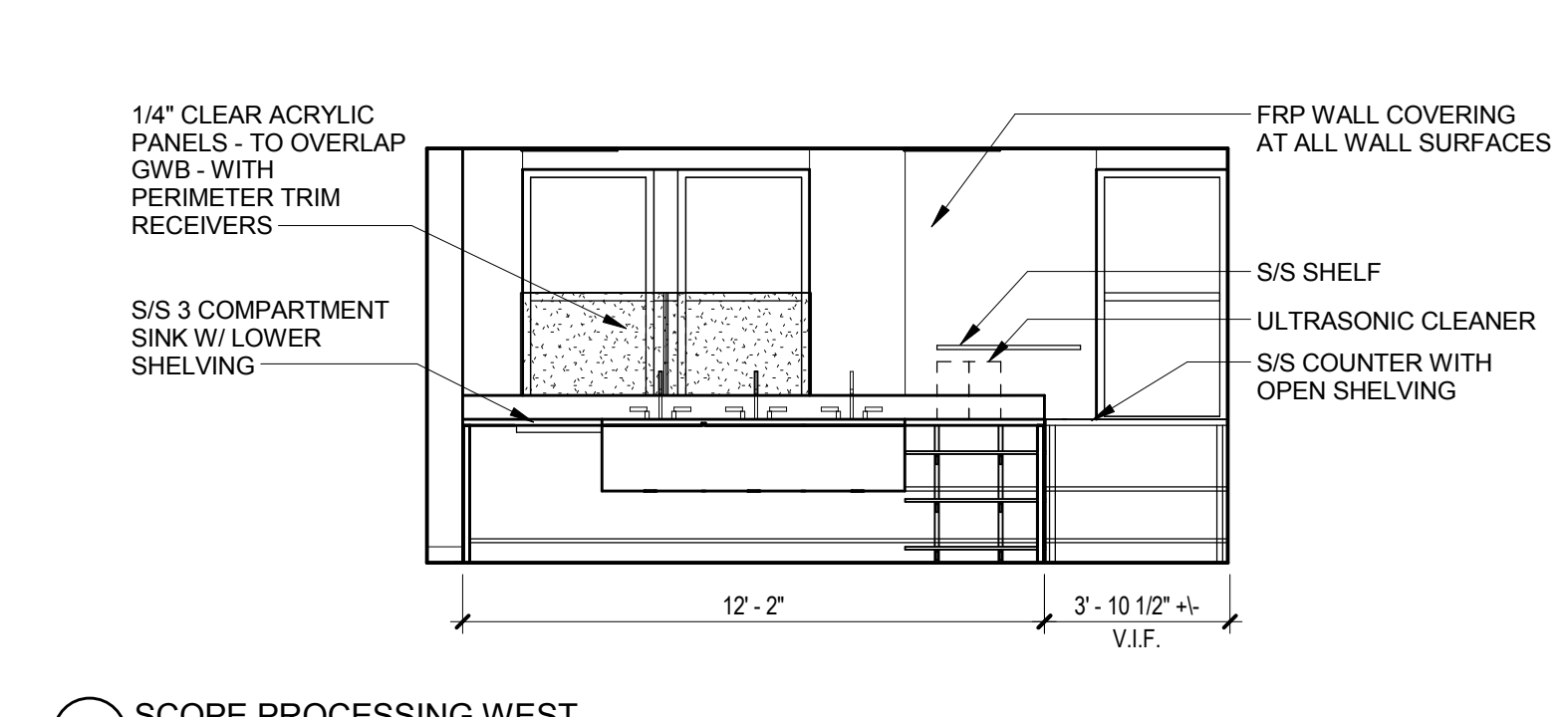
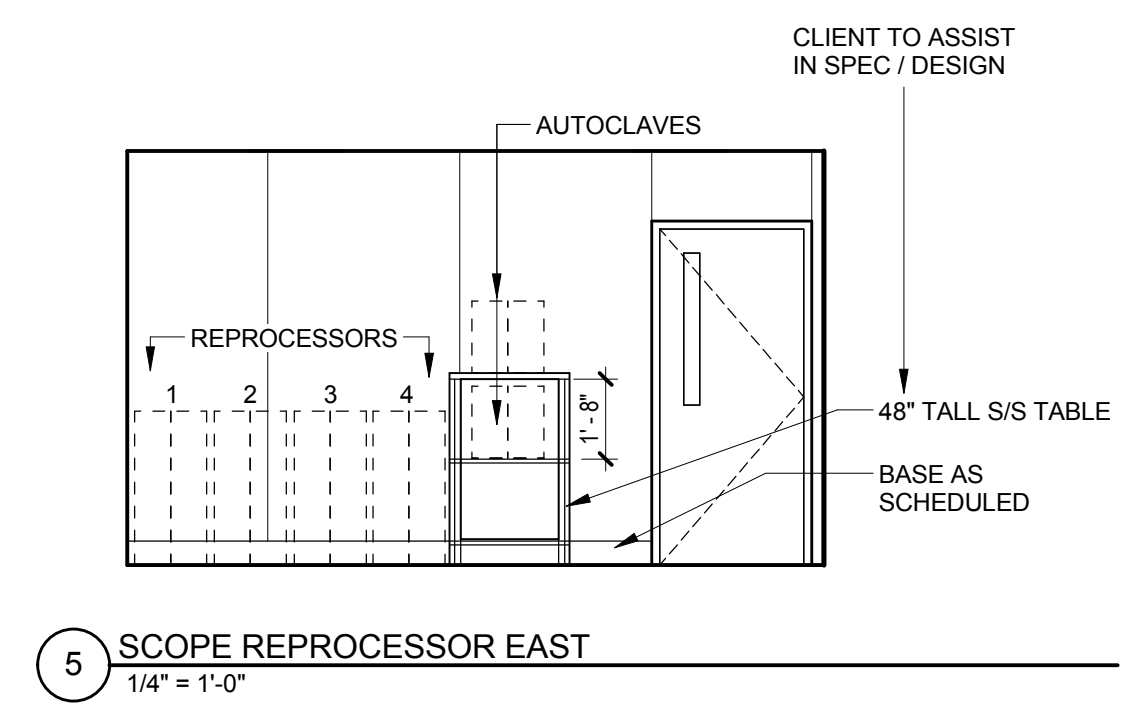
COPYRIGHT 2016
PDT Architects
Reuse or reproduction of the contents of this document is not permitted without written permission of PDT Architects.

PORTLAND GASTROENTEROLOGY CENTER
161 Marginal Way Portland, Maine

No.	Date	Description
		Revision Schedule



JOB NO. 14054
DRWN, CHK Checker
SCALE:
ISSUE PERMIT SET 03/18/16
TITLE INTERIOR ELEVATIONS
SHEET A212



11 Elevation 7 - a
1/4" = 1'-0"

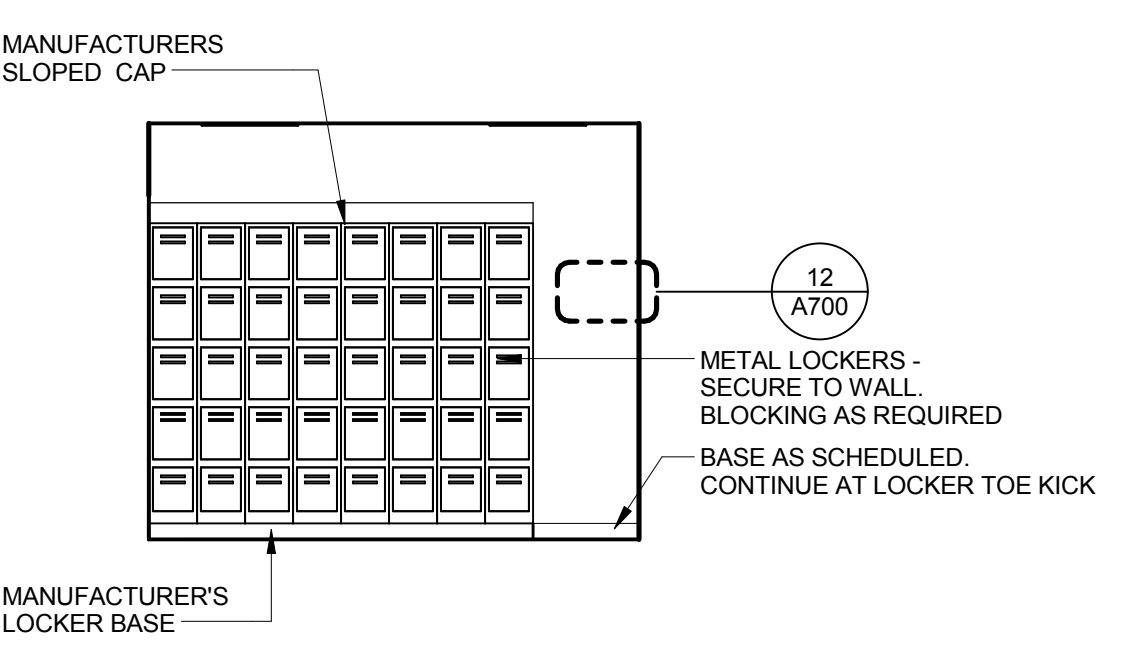
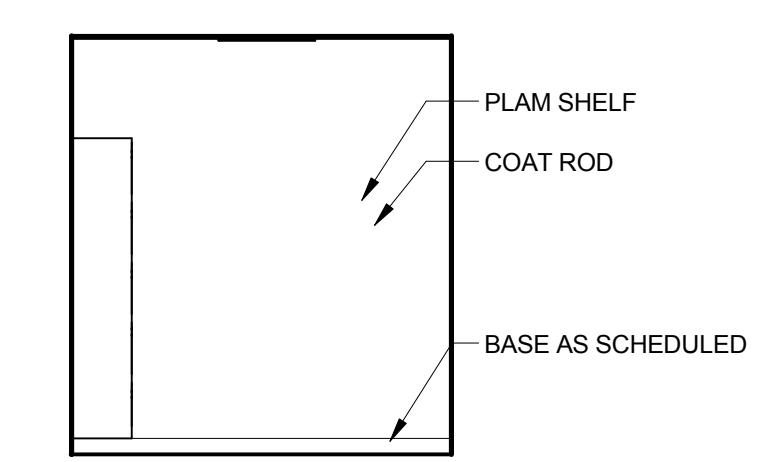
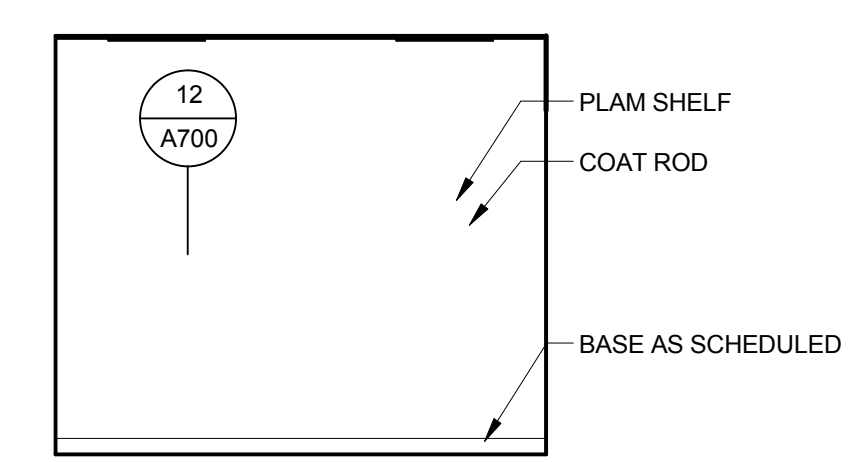
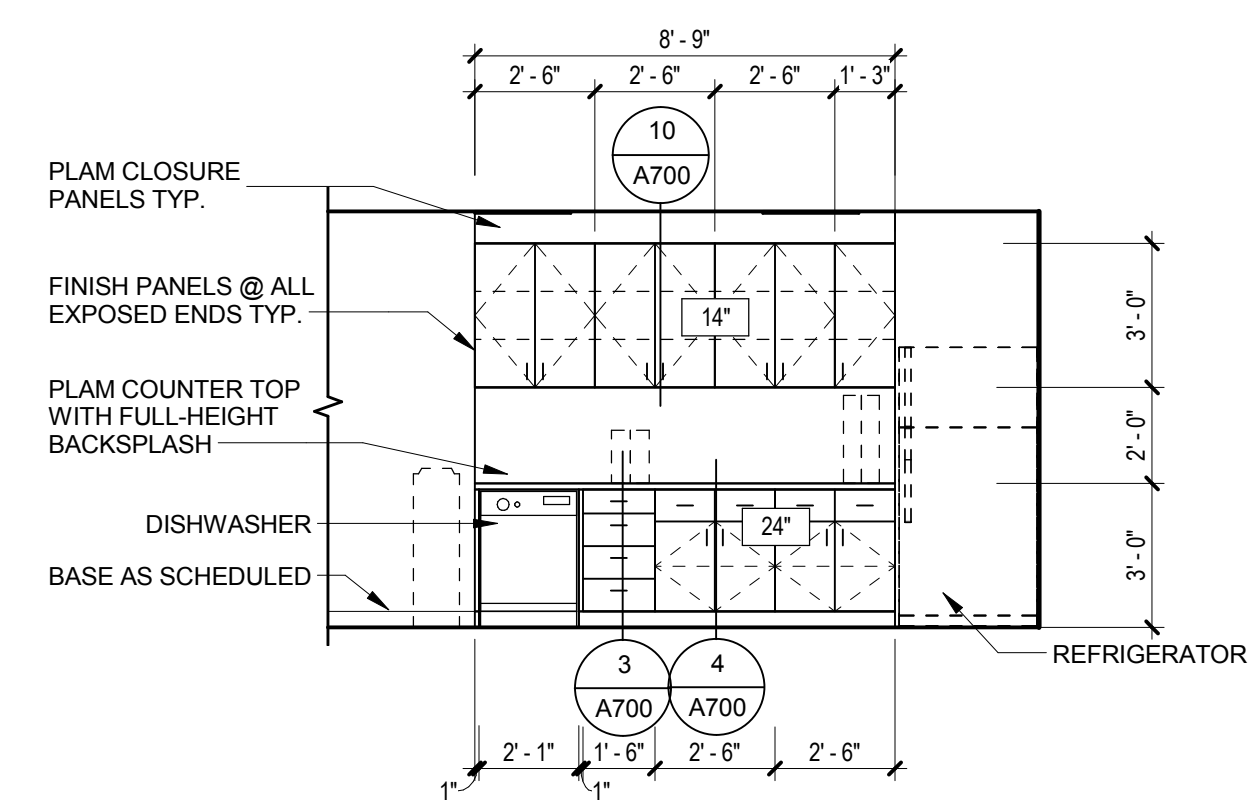
10 Elevation 6 - a
1/4" = 1'-0"

9 PATH. LAB 400 W
1/4" = 1'-0"

8 PATH. LAB 400 S
1/4" = 1'-0"

7 PATH. LAB 400 E
1/4" = 1'-0"

6 PATH. LAB 400 N
1/4" = 1'-0"

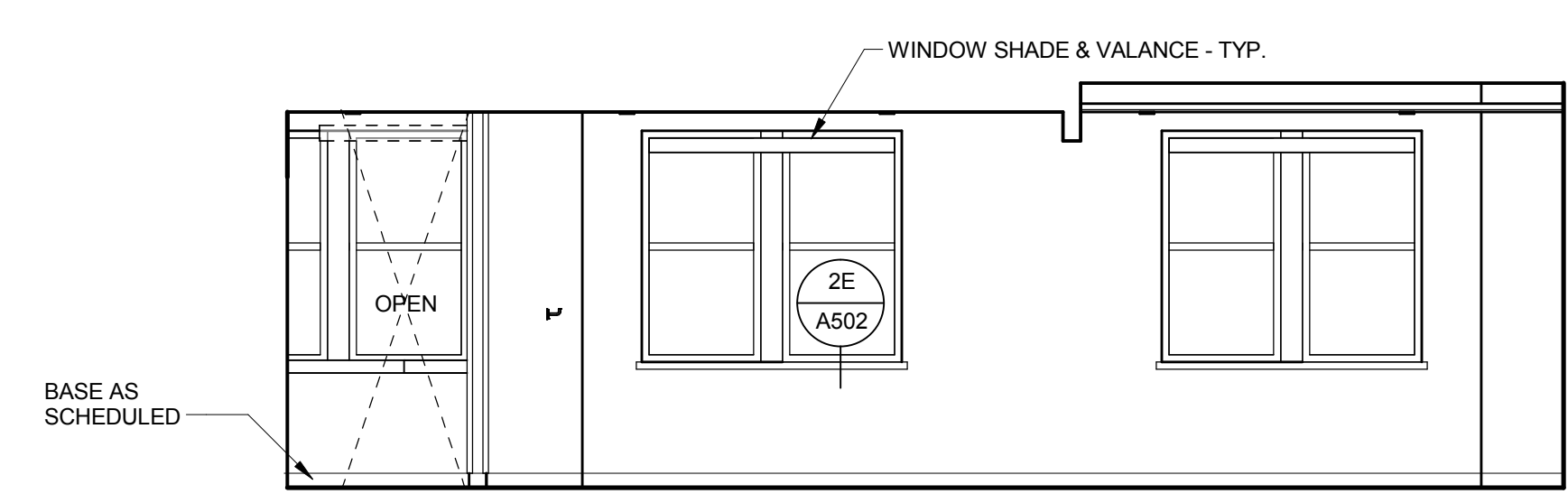


4b STAFF LOUNGE 403 S
1/4" = 1'-0"

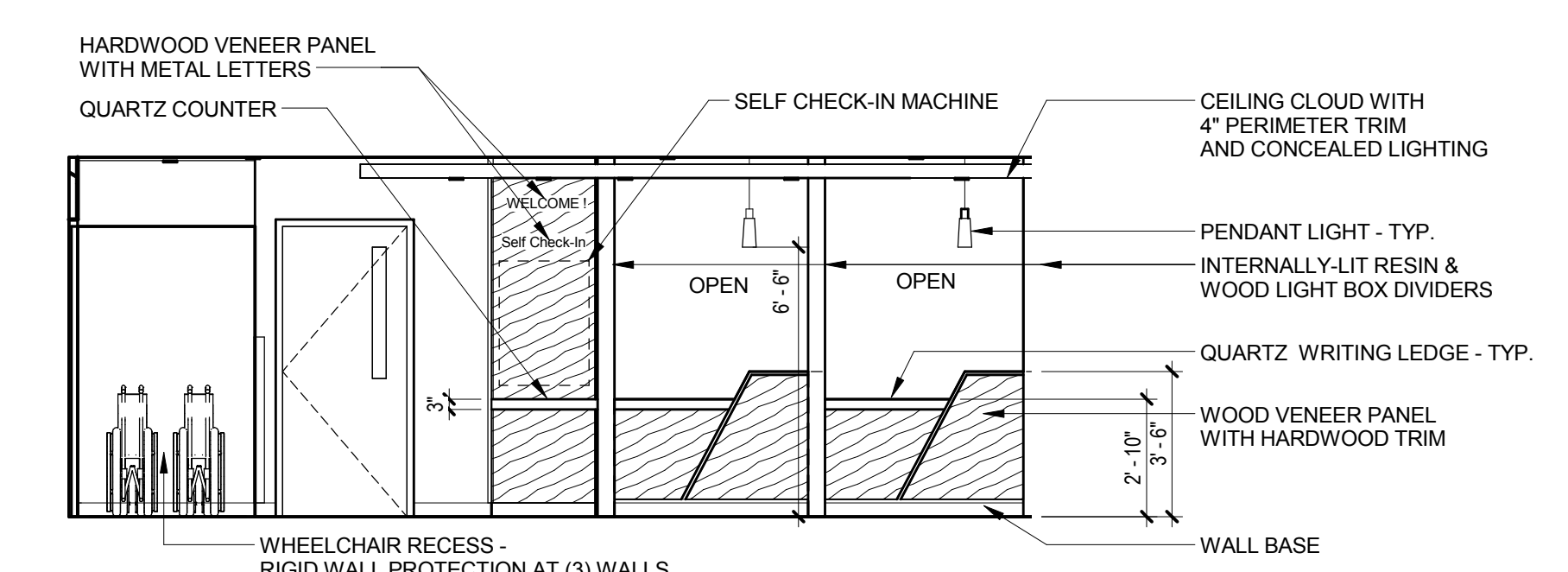
3b LOCKER 409 WEST
1/4" = 1'-0"

2b LOCKER 409 SOUTH
1/4" = 1'-0"

1b LOCKER 409 EAST
1/4" = 1'-0"



4a WAITING 412 EAST
1/4" = 1'-0"



2a CIRCULATION C420
1/4" = 1'-0"