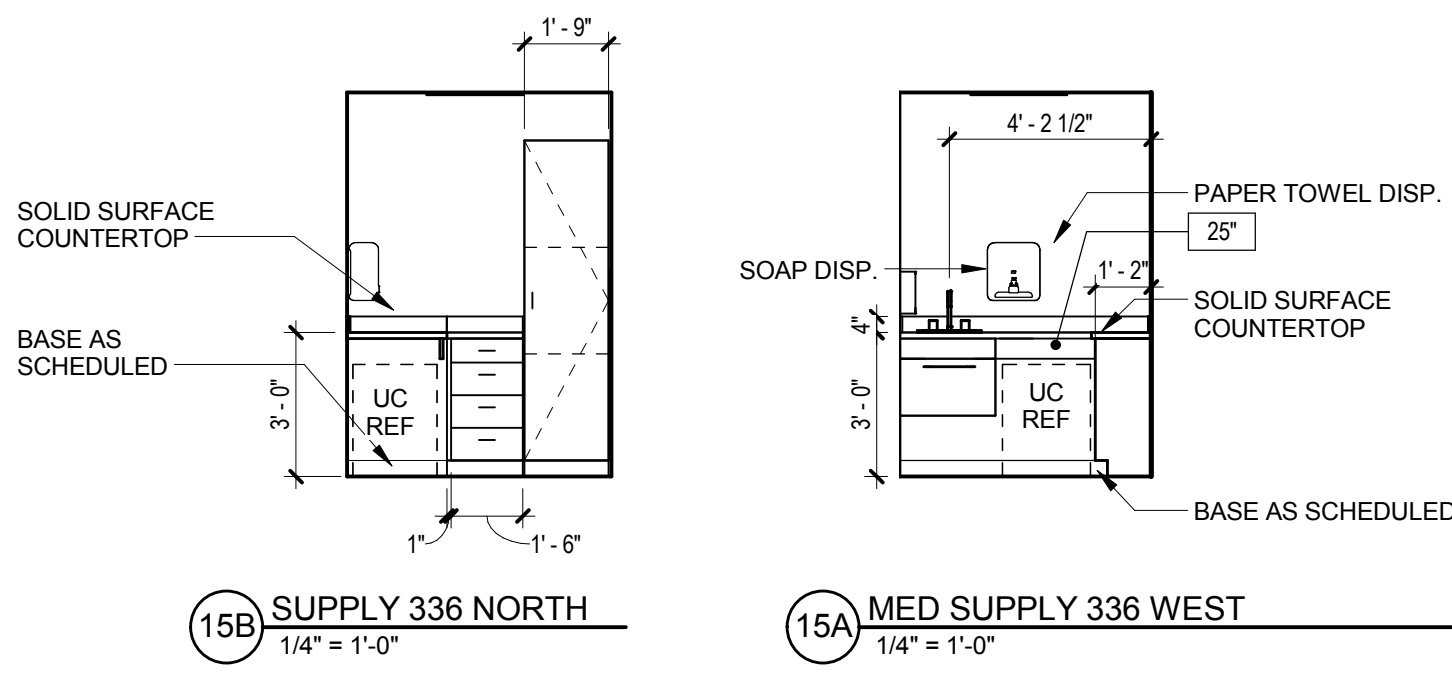


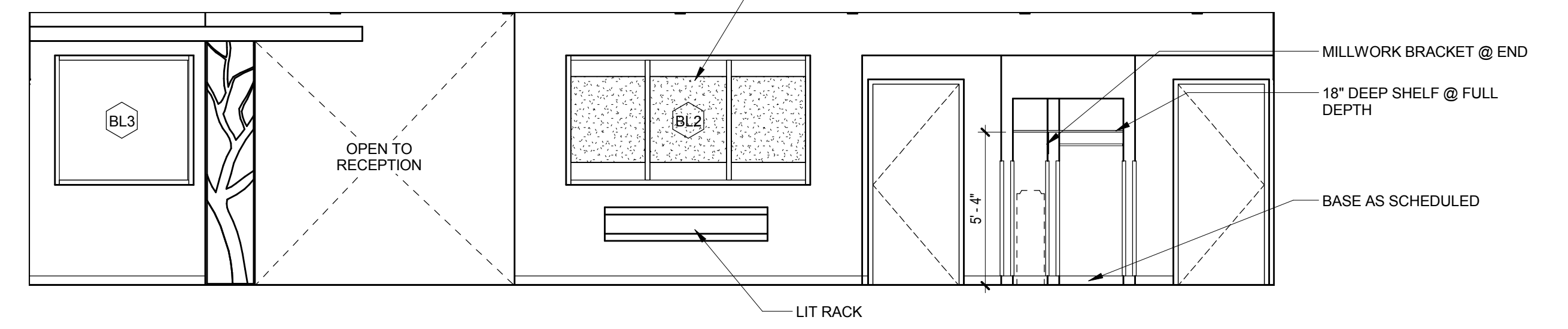
INTERIOR GENERAL NOTES

1. ALL CABINETS IN CLINICAL AREAS SHALL HAVE LOCKS
2. COUNTERTOPS AND WORK AREAS TO BE PLAM TYPICAL. U.N.O. SEE NOTE BELOW.
3. COUNTERTOPS IN WET AREAS, OR CONTAINING SINKS WILL BE SOLID SURFACE.

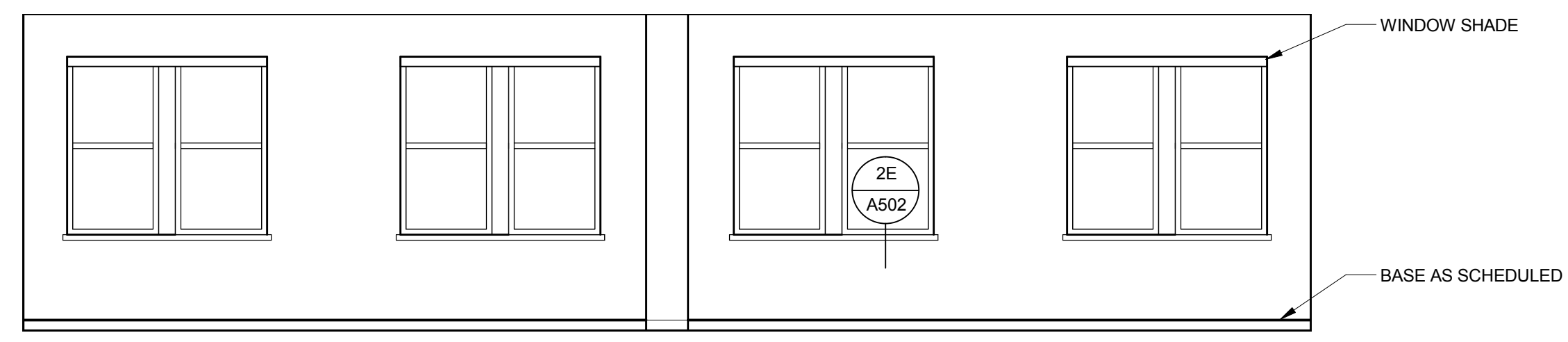


15B SUPPLY 336 NORTH
1/4" = 1'-0"

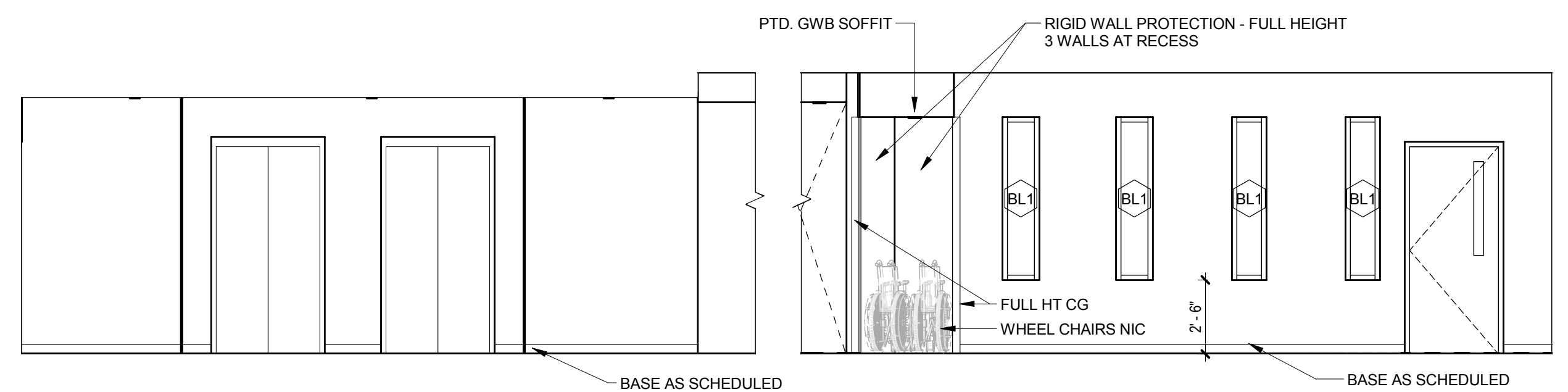
15A MED SUPPLY 336 WEST
1/4" = 1'-0"



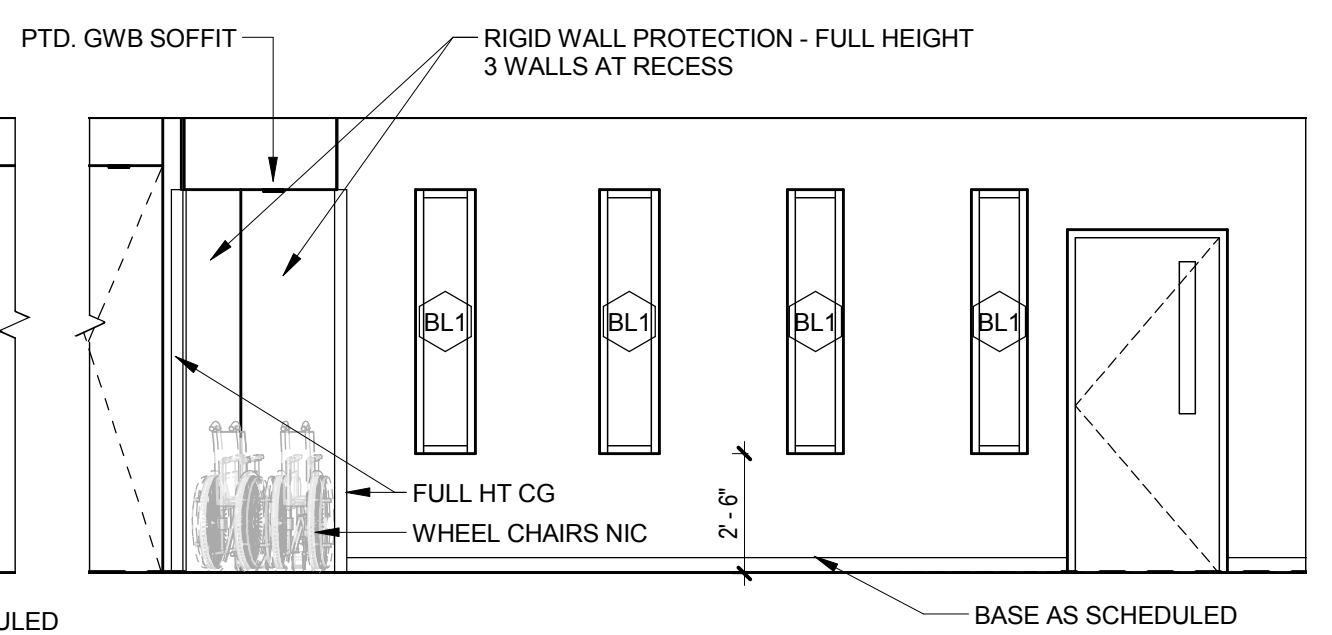
14B WAITING 357 SOUTH
1/4" = 1'-0"



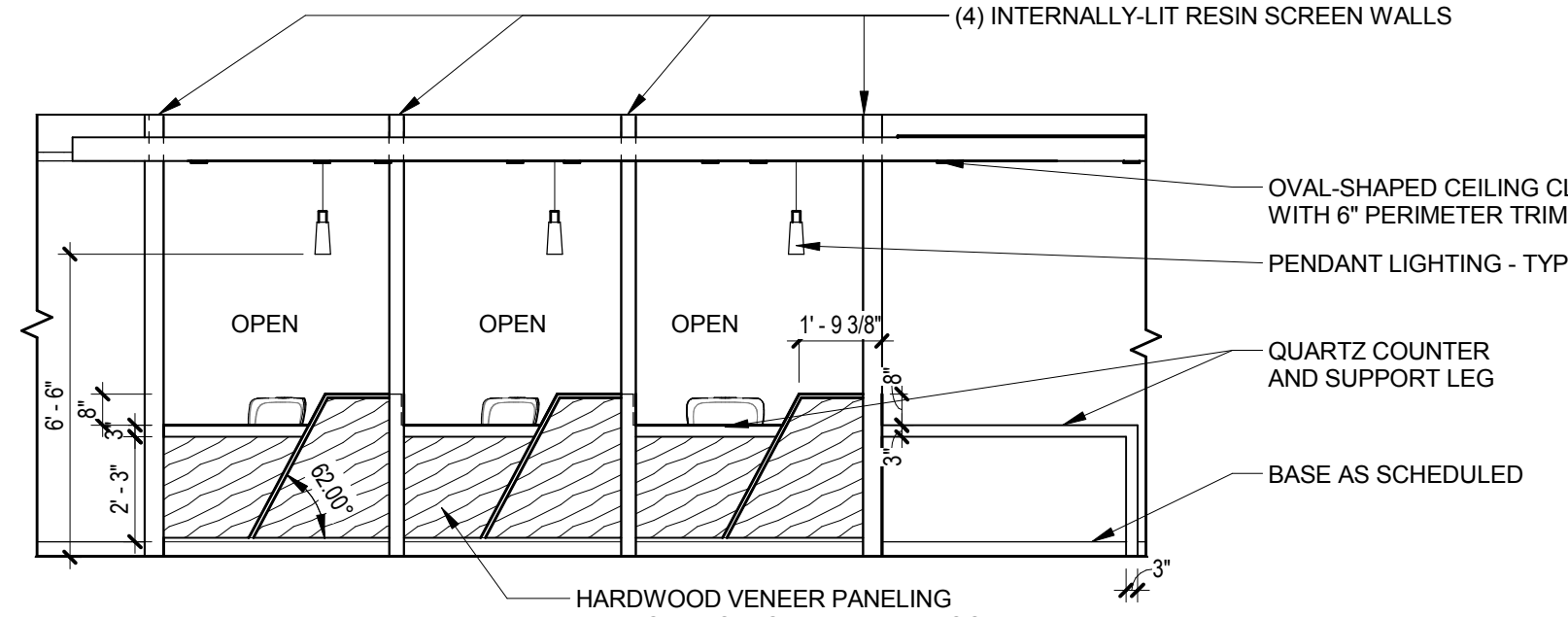
14A WAITING 357 N
1/4" = 1'-0"



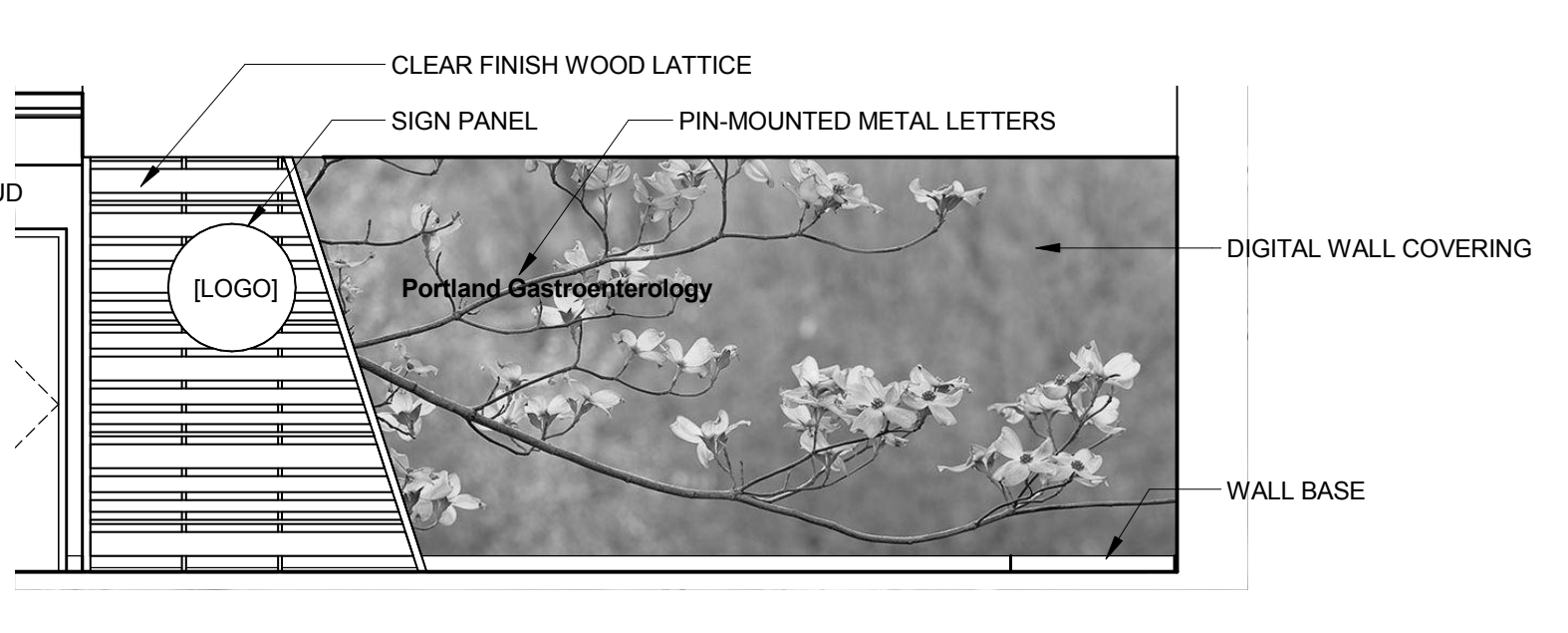
13D LOBBY 300 WEST
1/4" = 1'-0"



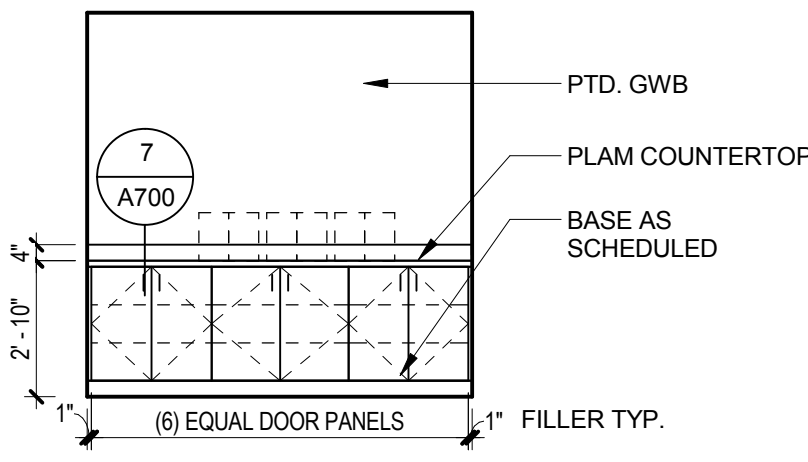
13C CIRCULATION 350 WEST @ RECEPTION
1/4" = 1'-0"



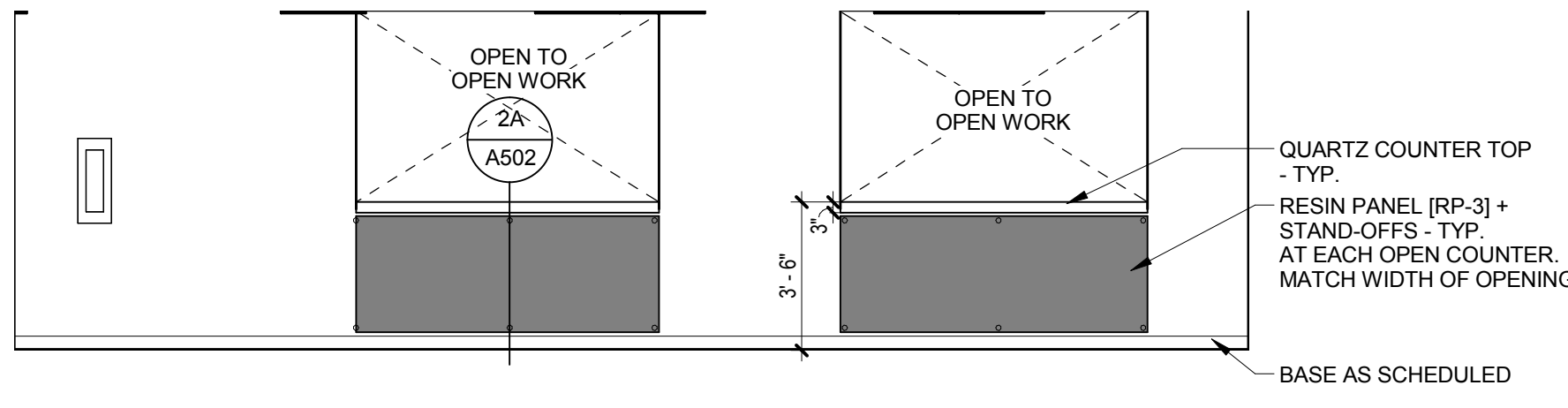
13B CIRCULATION 350 EAST @ RECEPTION
1/4" = 1'-0"



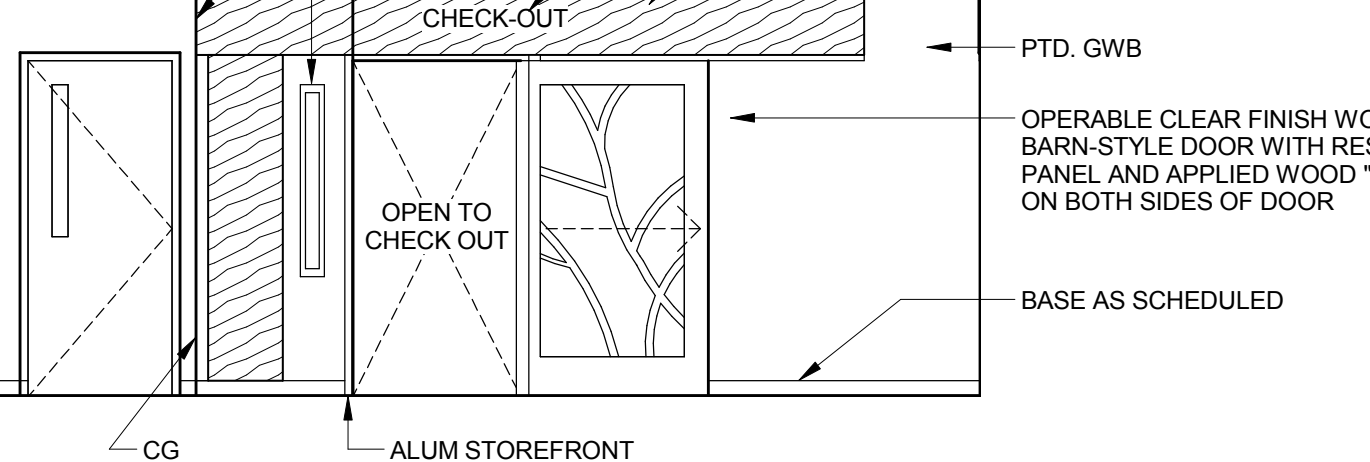
13A LOBBY 300 EAST
1/4" = 1'-0"



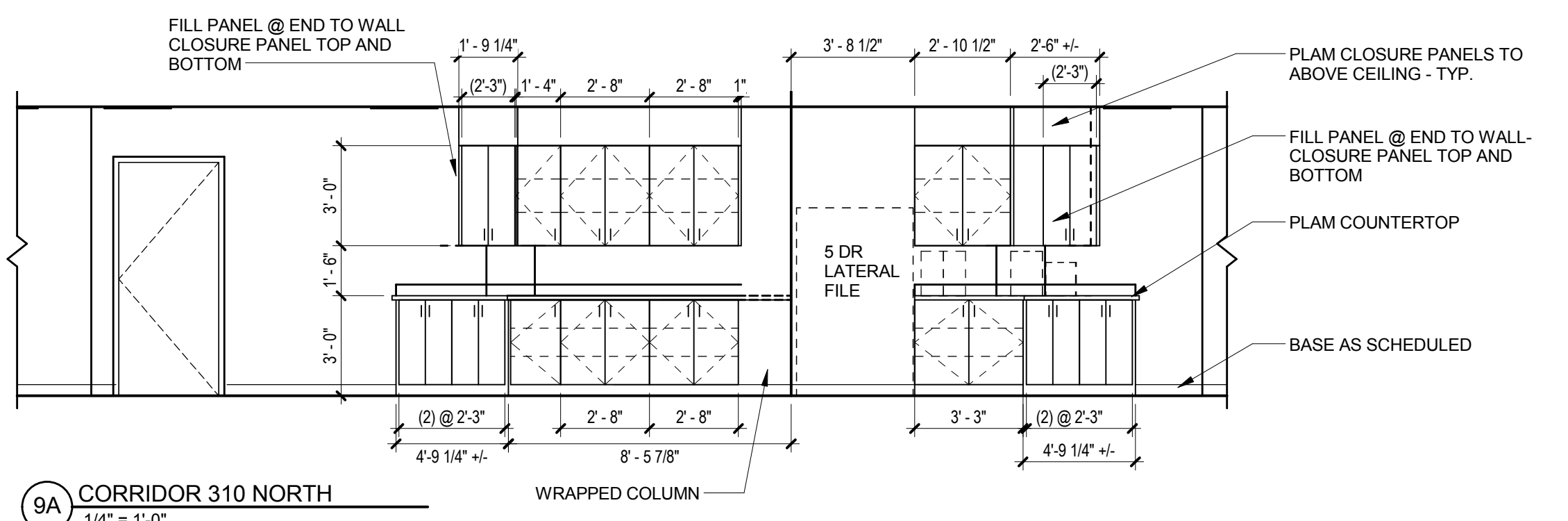
12A RECEPTION 339 EAST
1/4" = 1'-0"



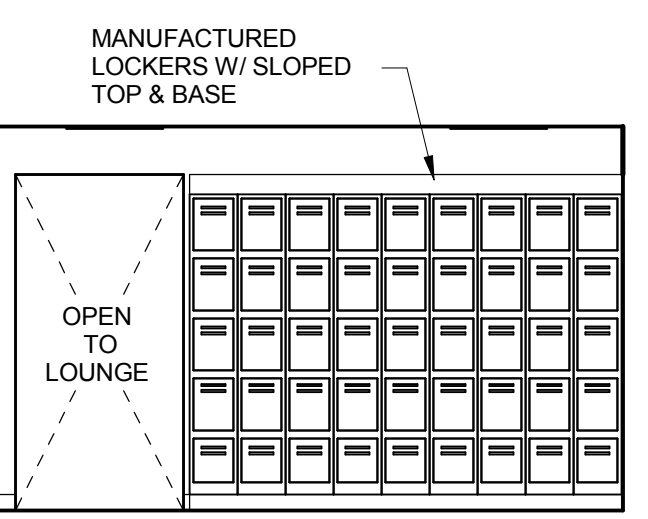
11A CORRIDOR C320 (C380 SIM)
1/4" = 1'-0"



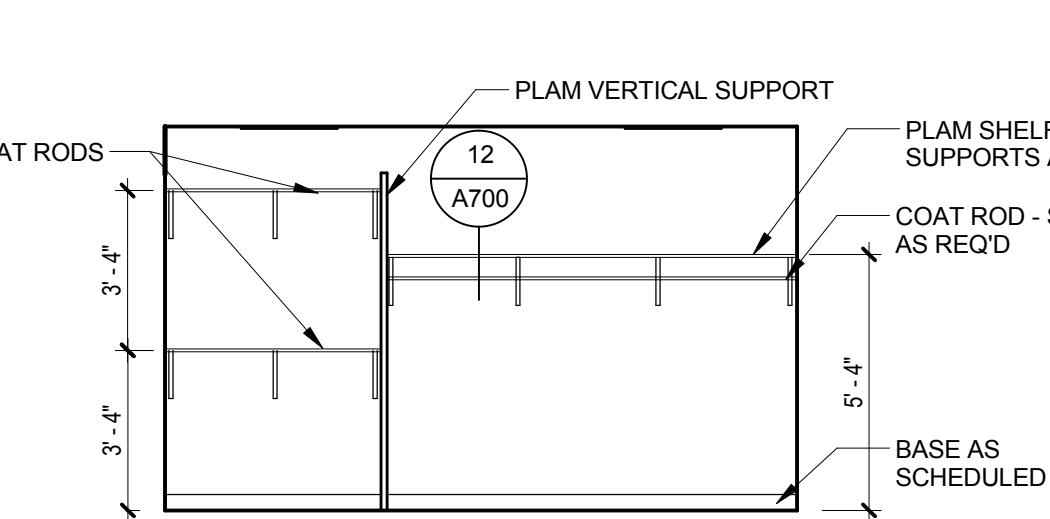
10A CORR C330 C/O AREA
1/4" = 1'-0"



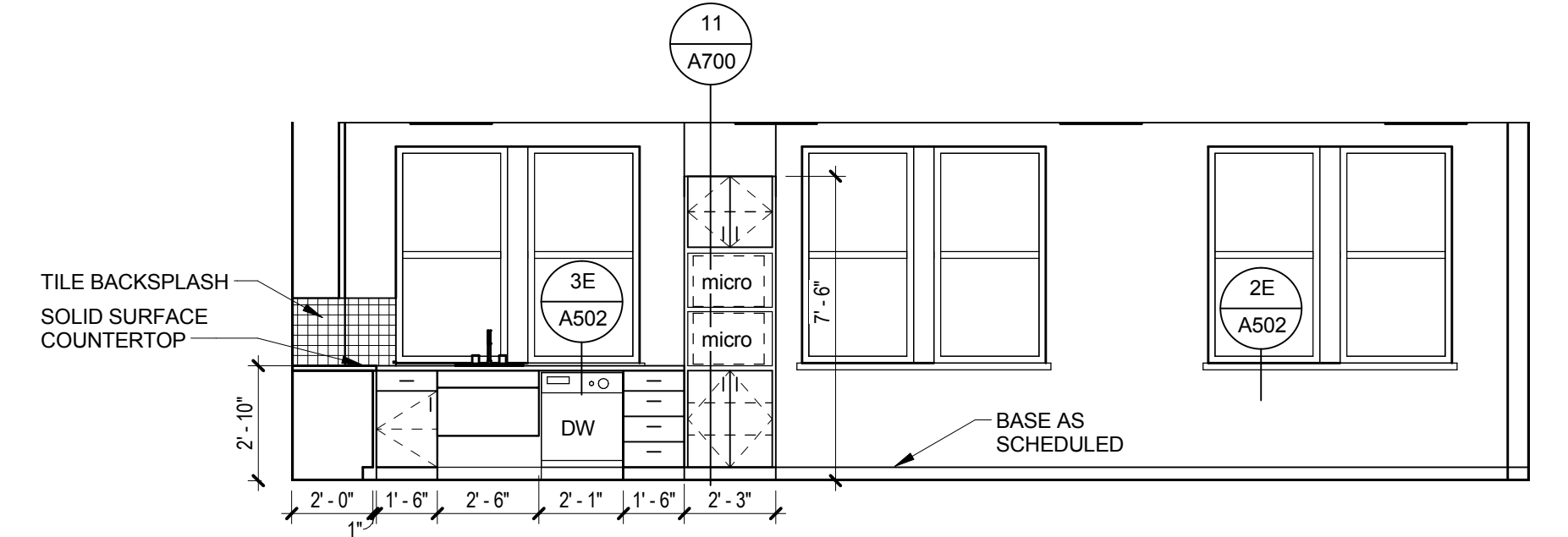
9A CORRIDOR 310 NORTH
1/4" = 1'-0"



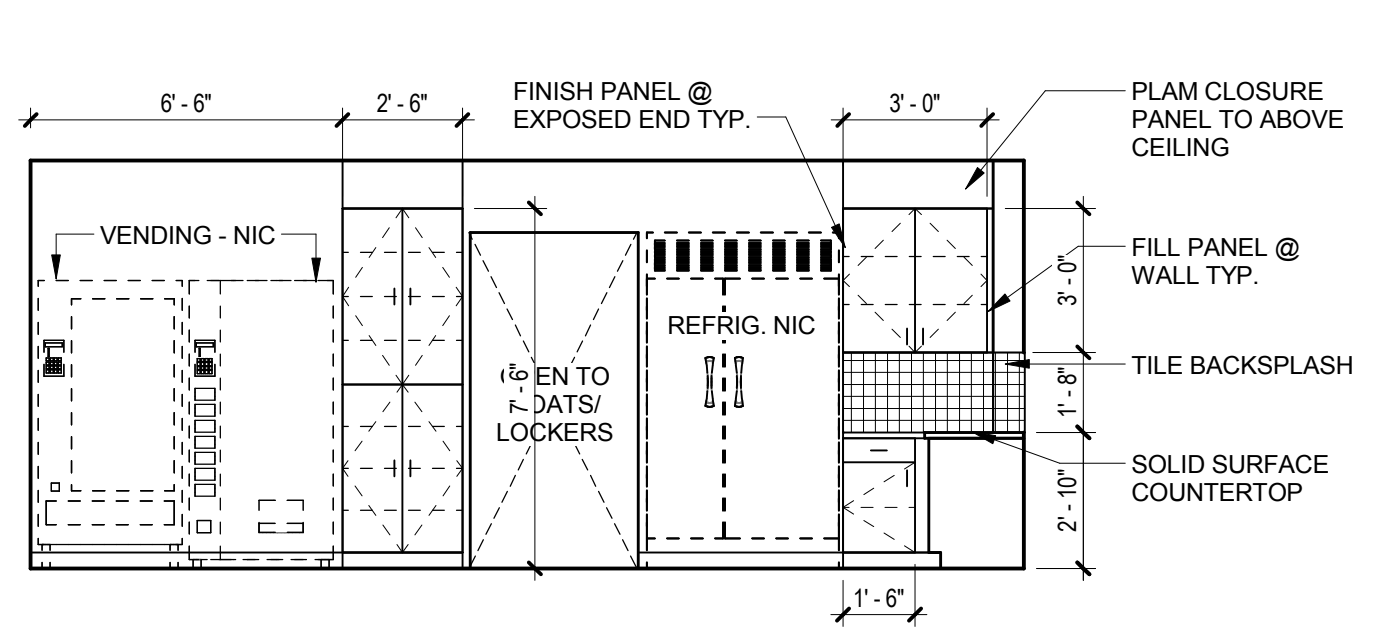
8B 316 COATS WEST
1/4" = 1'-0"



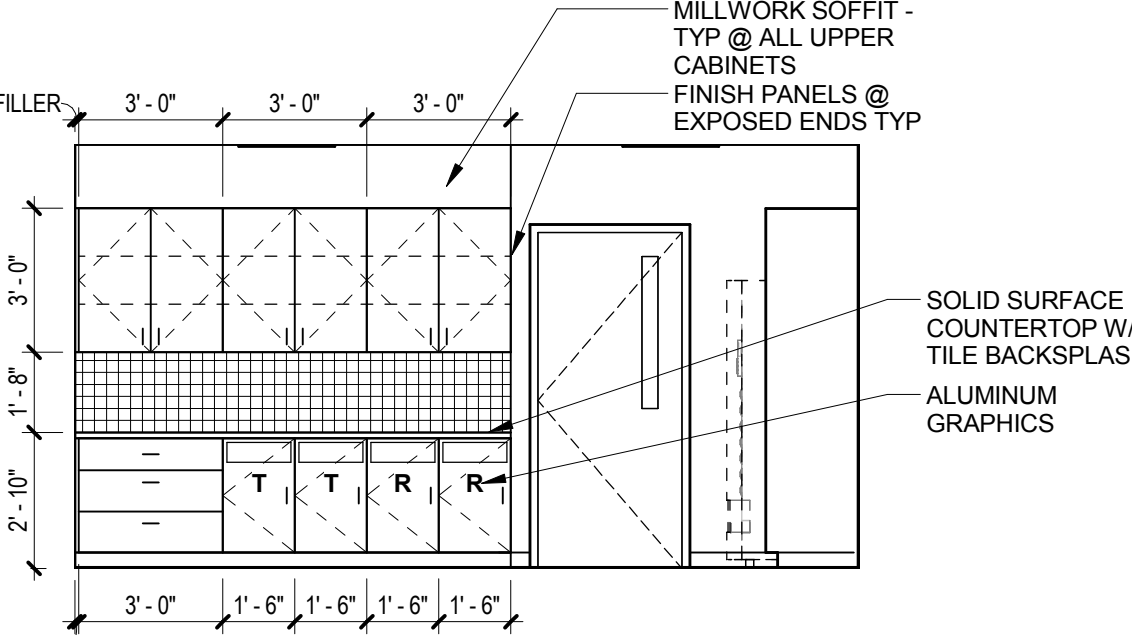
8A 316 COATS EAST
1/4" = 1'-0"



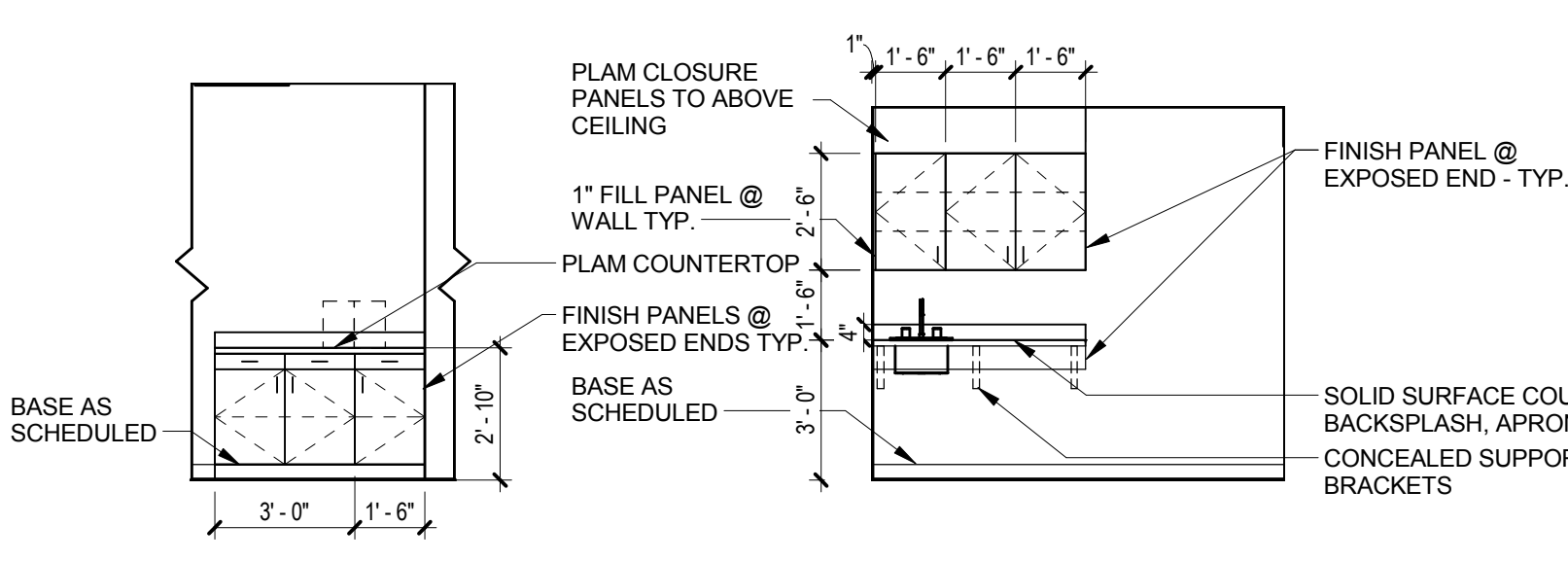
7C LOUNGE 316 SOUTH @ COUNTER
1/4" = 1'-0"



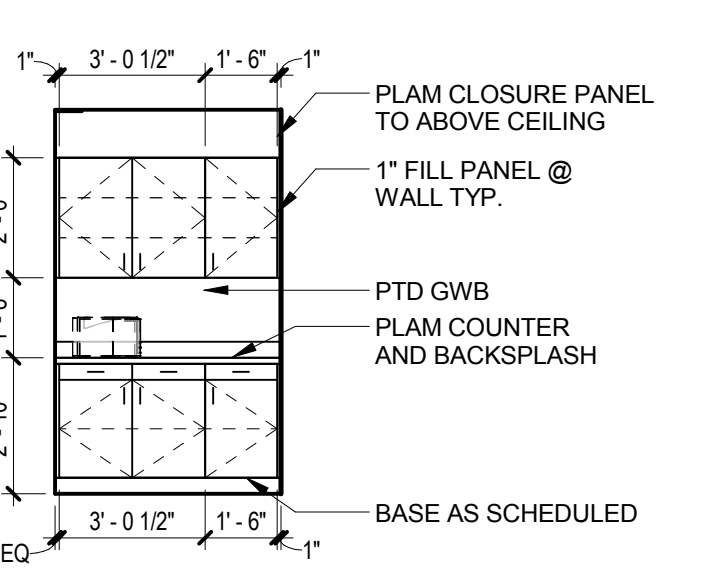
7B LOUNGE 316 EAST
1/4" = 1'-0"



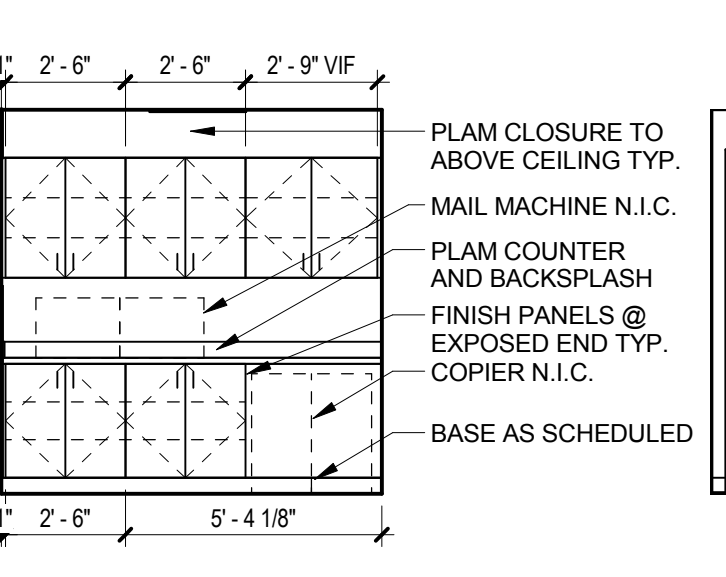
7A LOUNGE 316 NORTH
1/4" = 1'-0"



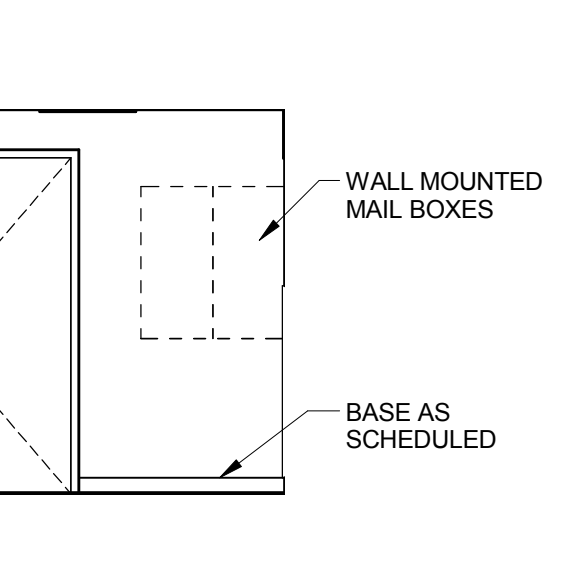
5A ROOMERS 356 WEST
1/4" = 1'-0"



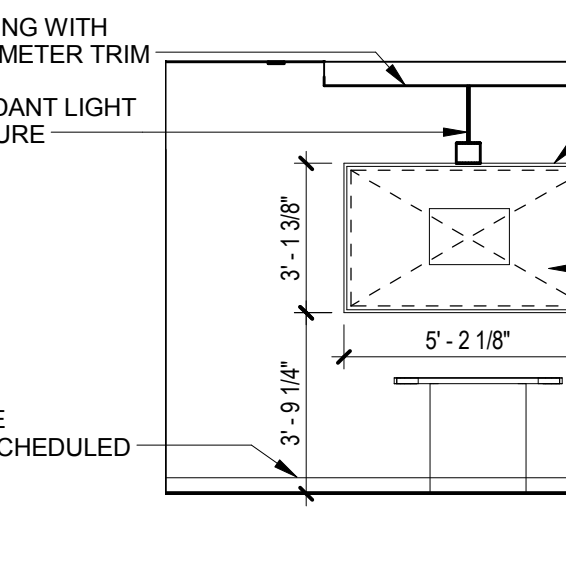
4A PHLEB 354 WEST
1/4" = 1'-0"



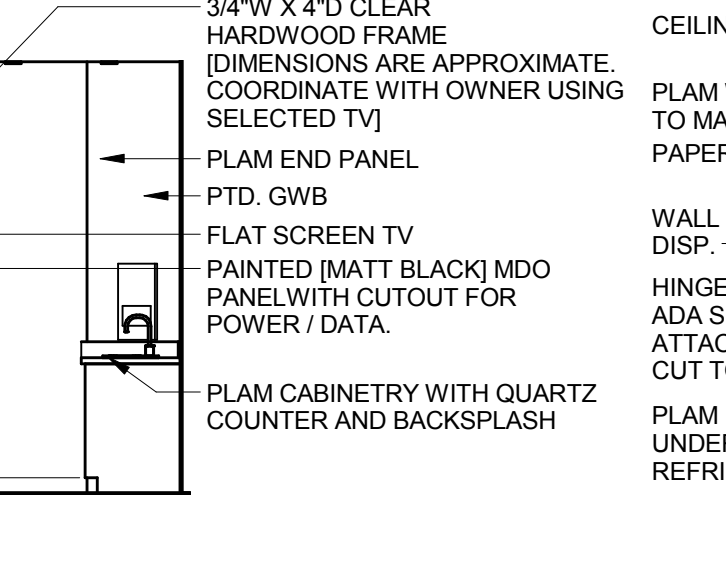
3A PRINT STATION 380A - 302 SIM
1/4" = 1'-0"



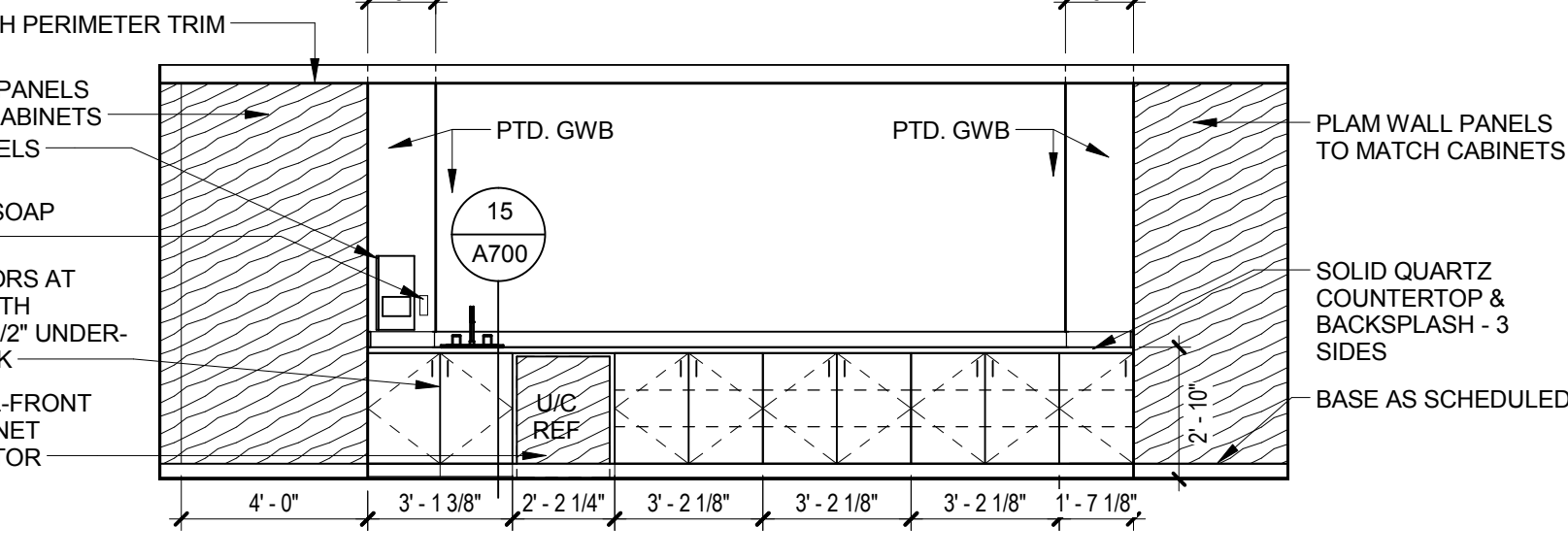
2B MAIL 307 WEST
1/4" = 1'-0"



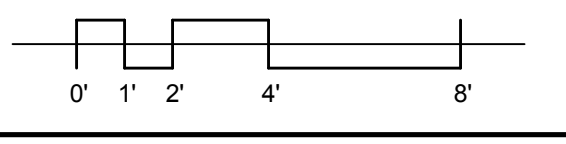
2A MAIL 307 EAST
1/4" = 1'-0"



1B LF CONF. 304 EAST
1/4" = 1'-0"



1A LF CONF. 304 SOUTH
1/4" = 1'-0"

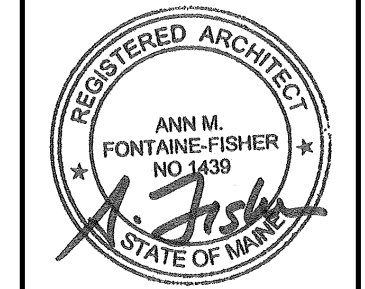


E
D
C
B
A

3/18/2016 5:16:59 PM

No.	Date	Description

Revision	Schedule
----------	----------



JOB NO. 14054

DRWN. CHK Checker

SCALE:

ISSUE PERMIT SET 03/18/16

TITLE INTERIOR ELEVATIONS

SHEET

A210