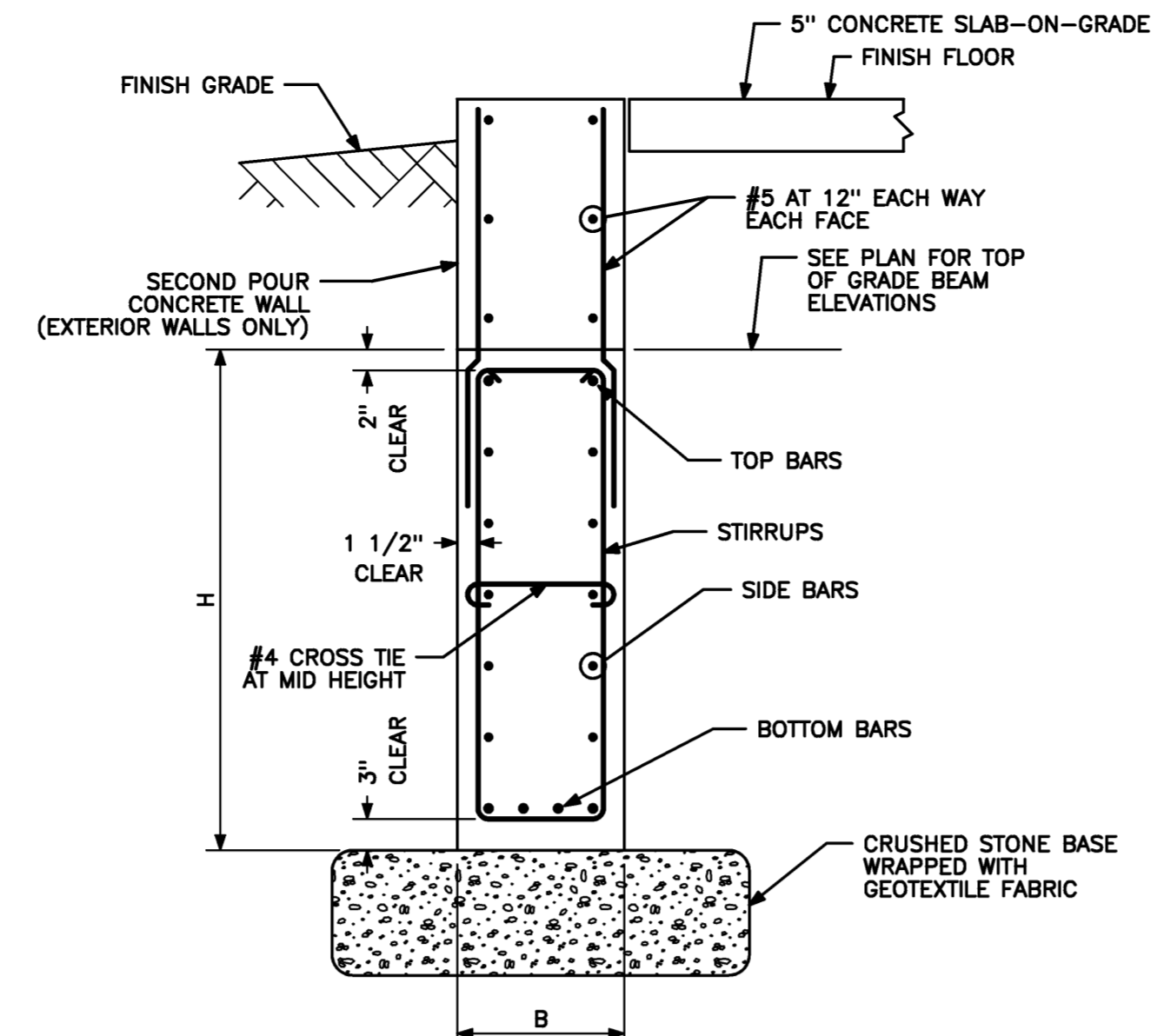
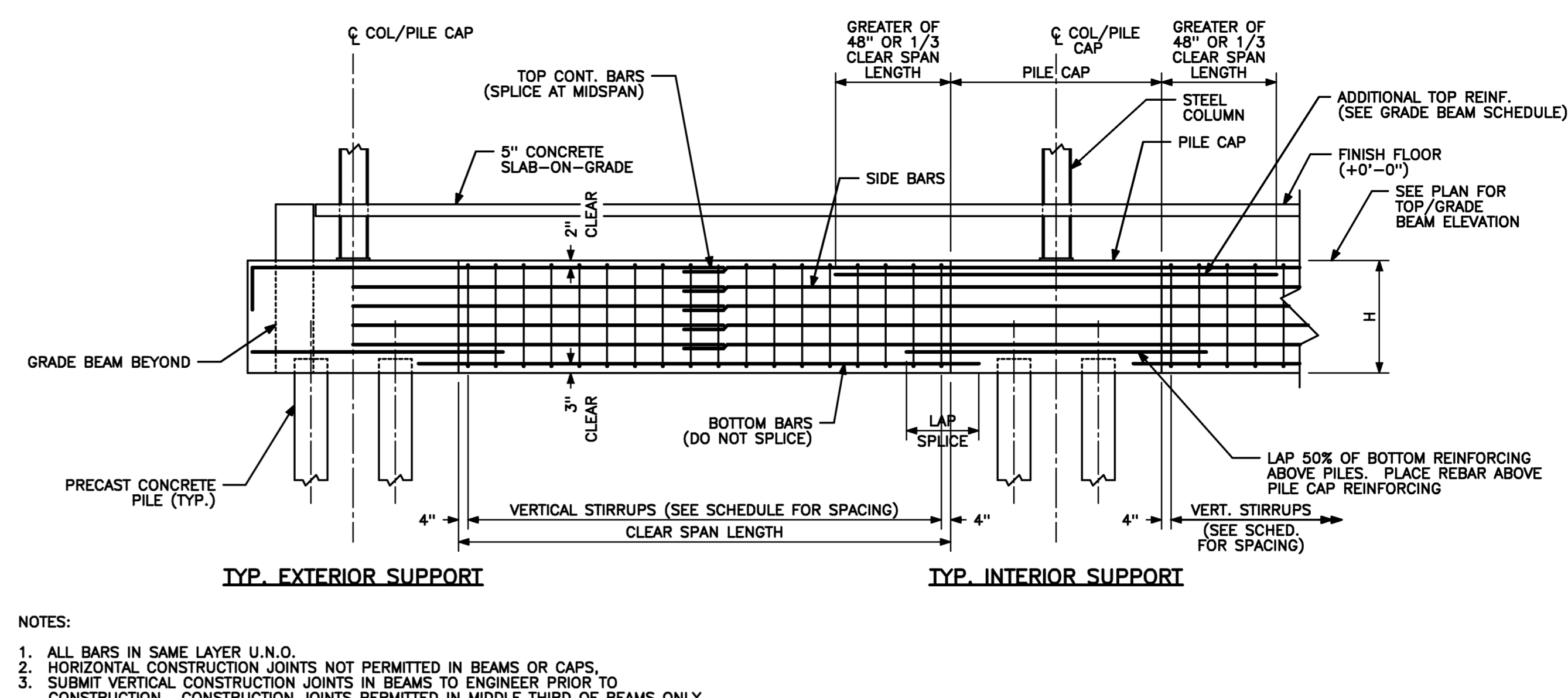


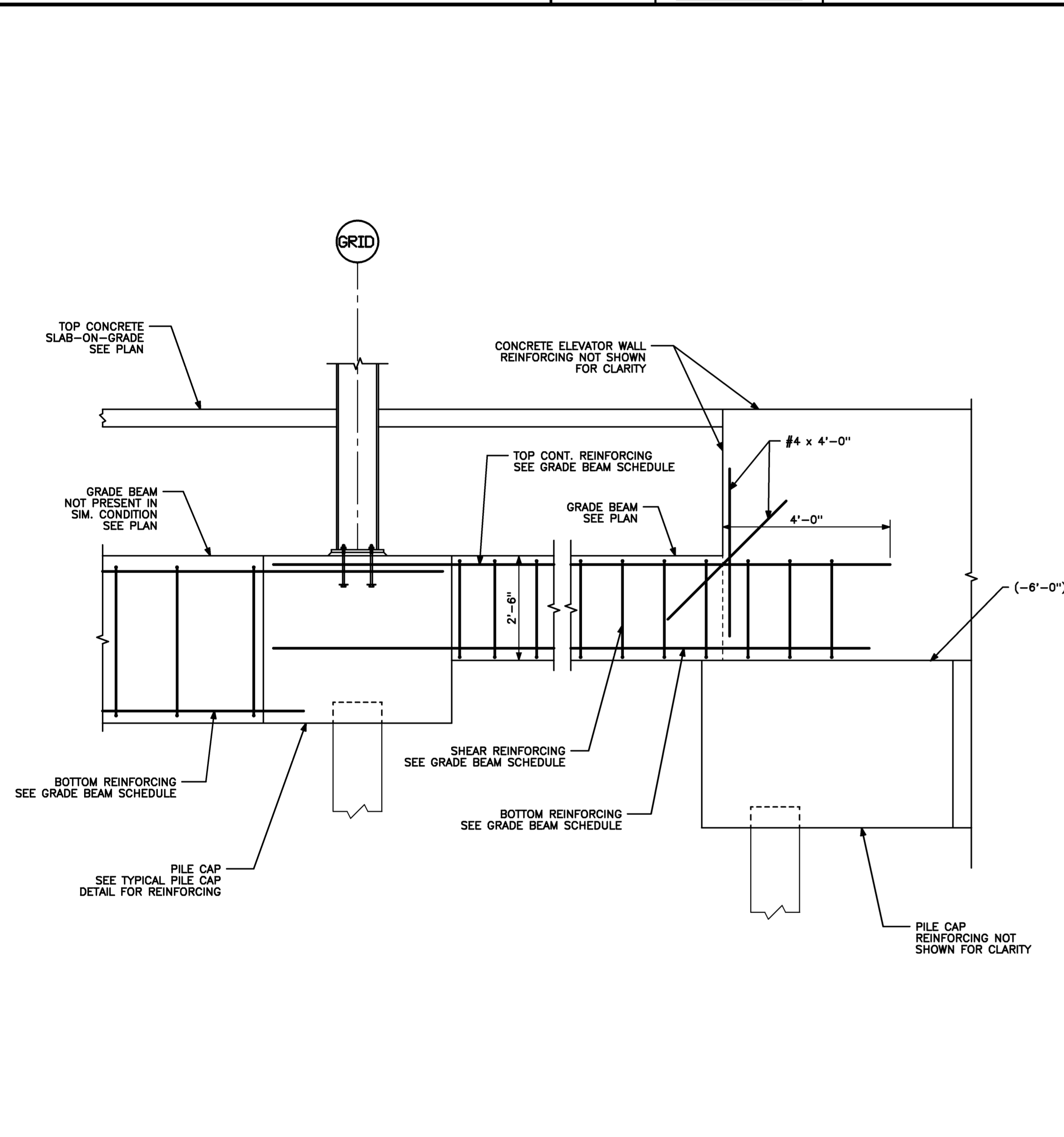
**SECTION AT ELEVATOR PIT**  
1/2" = 1'-0" REF: S05.1



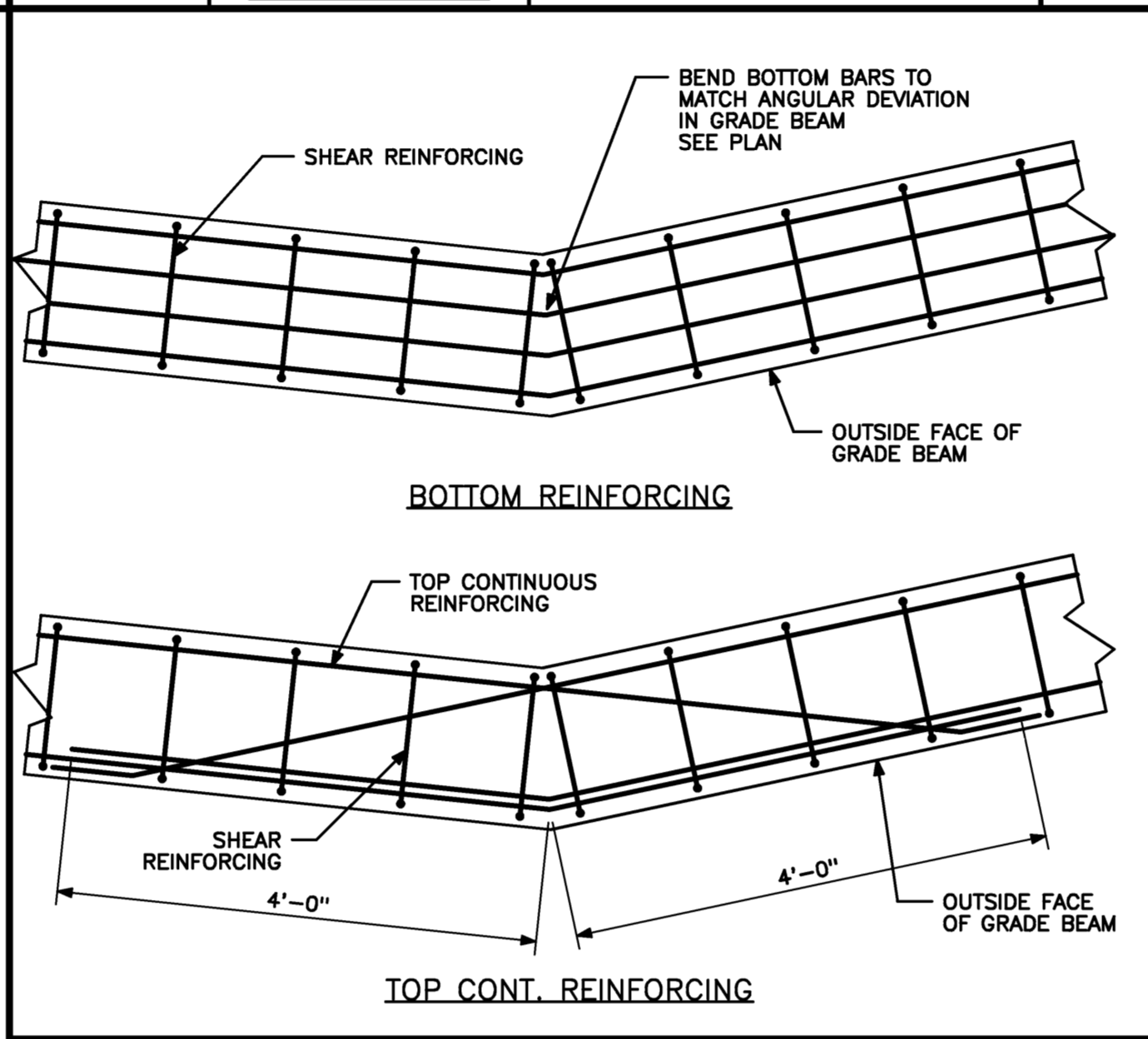
**TYPICAL GRADE BEAM DETAIL**  
3/4" = 1'-0" REF: S05.1



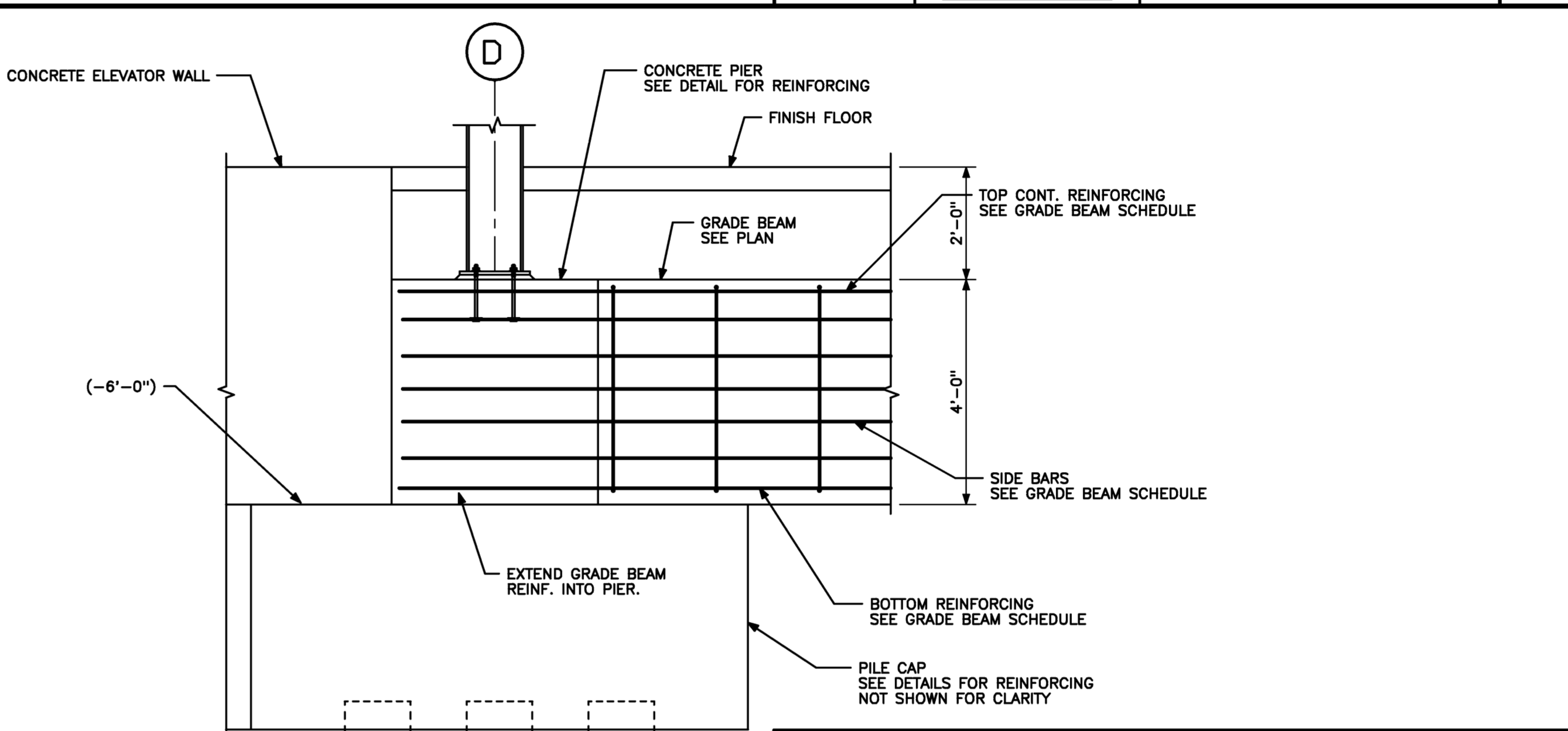
**TYPICAL GRADE BEAM ELEVATION**  
1/4" = 1'-0" REF: S05.1



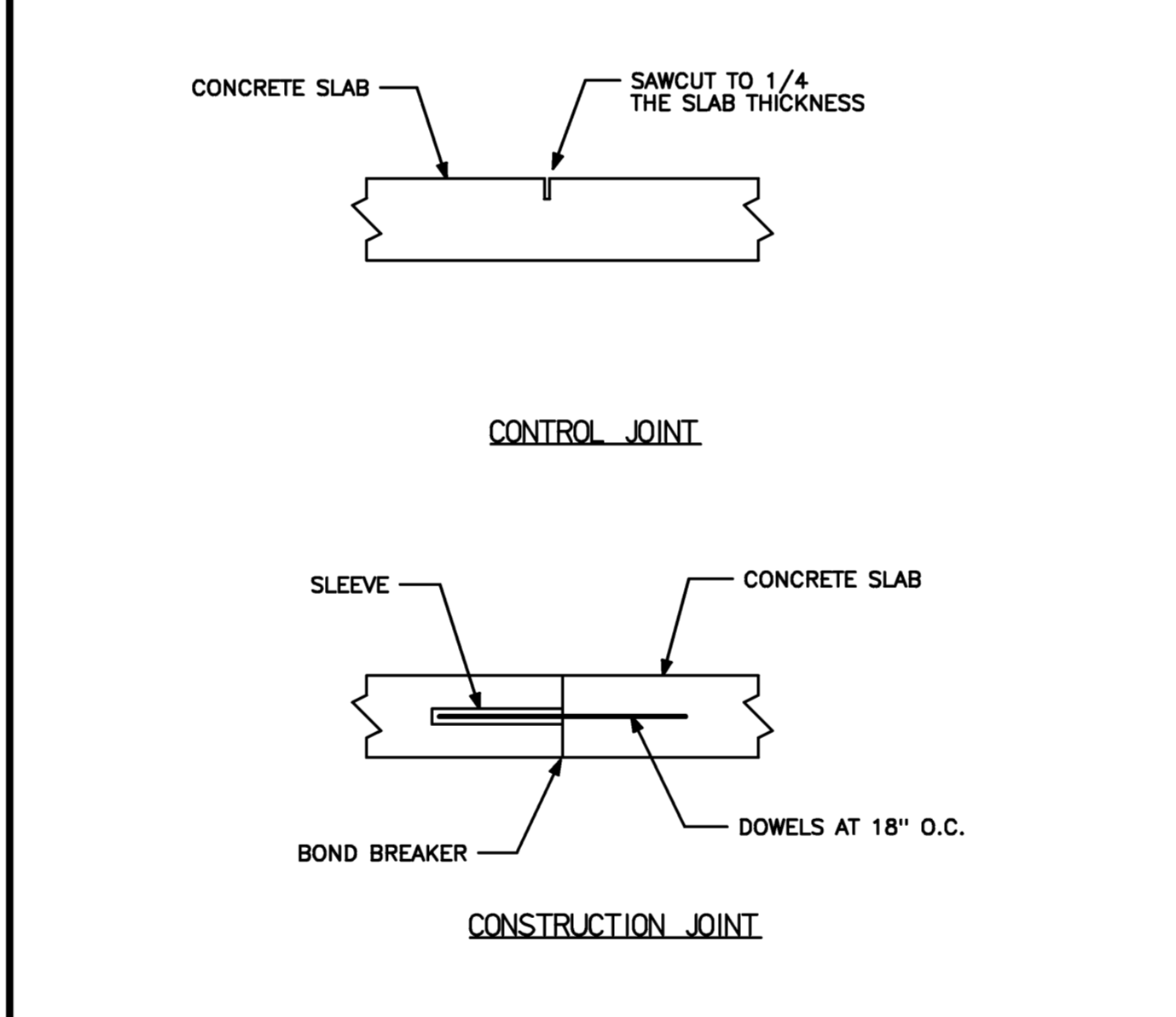
**SECTION**  
1/2" = 1'-0" REF: S05.1



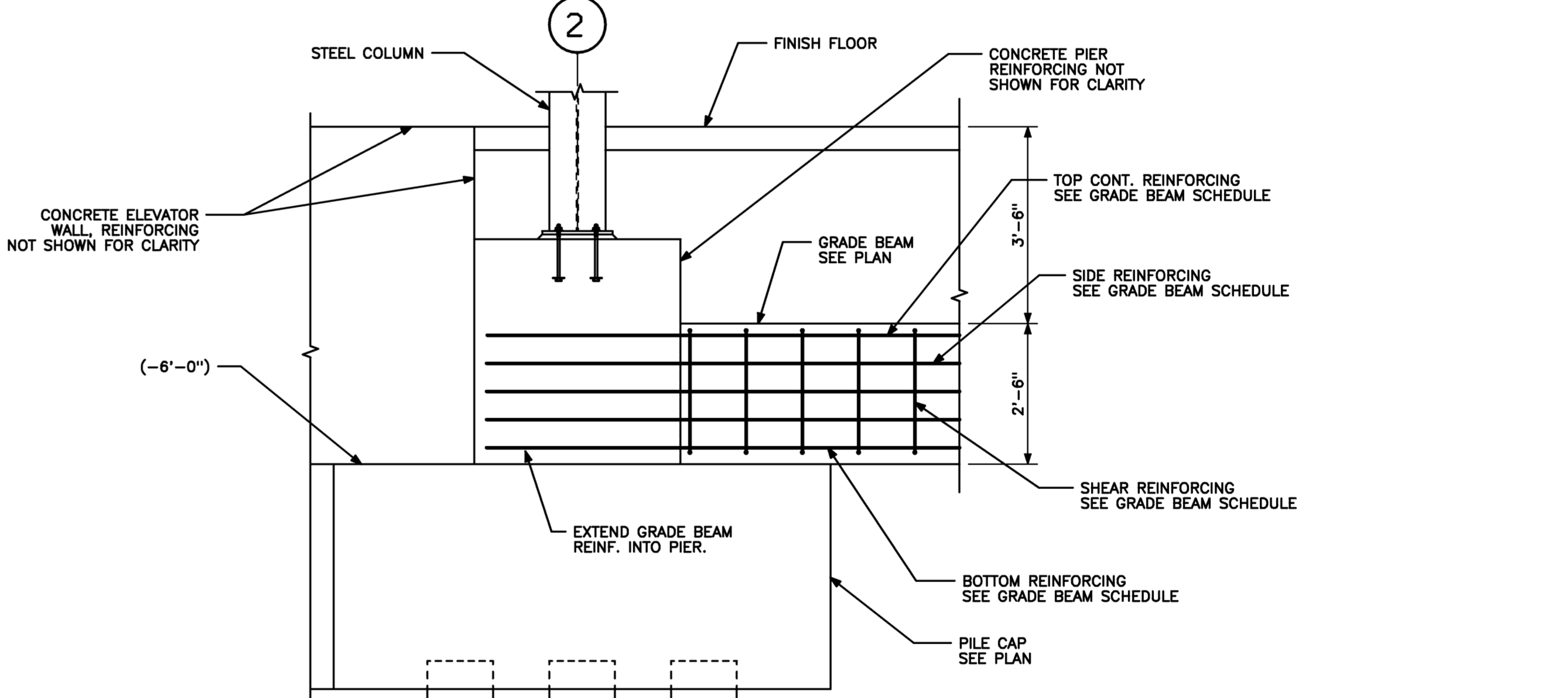
**DETAIL**  
3/4" = 1'-0" REF: S05.1



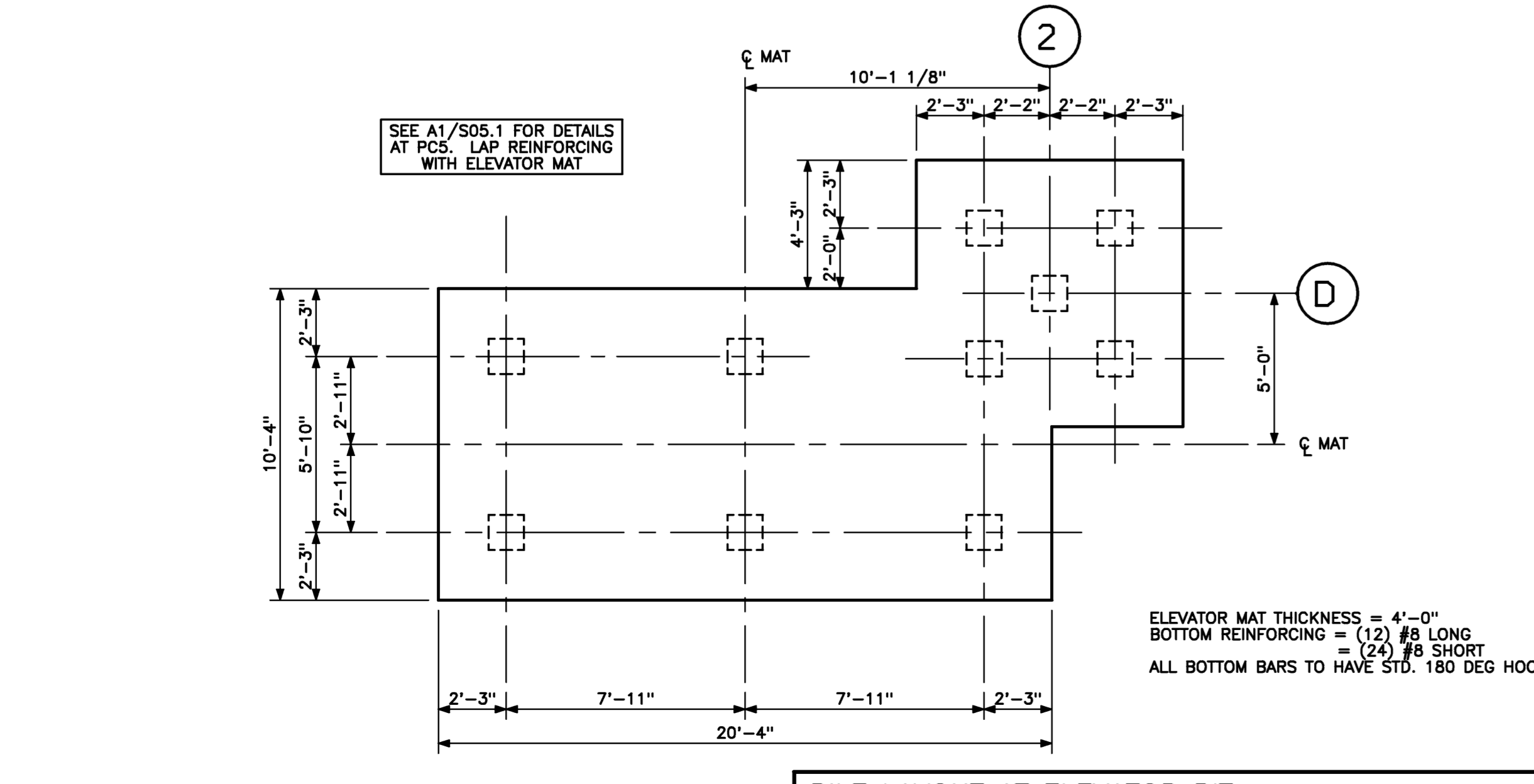
**SECTION**  
1/2" = 1'-0" REF: S05.1



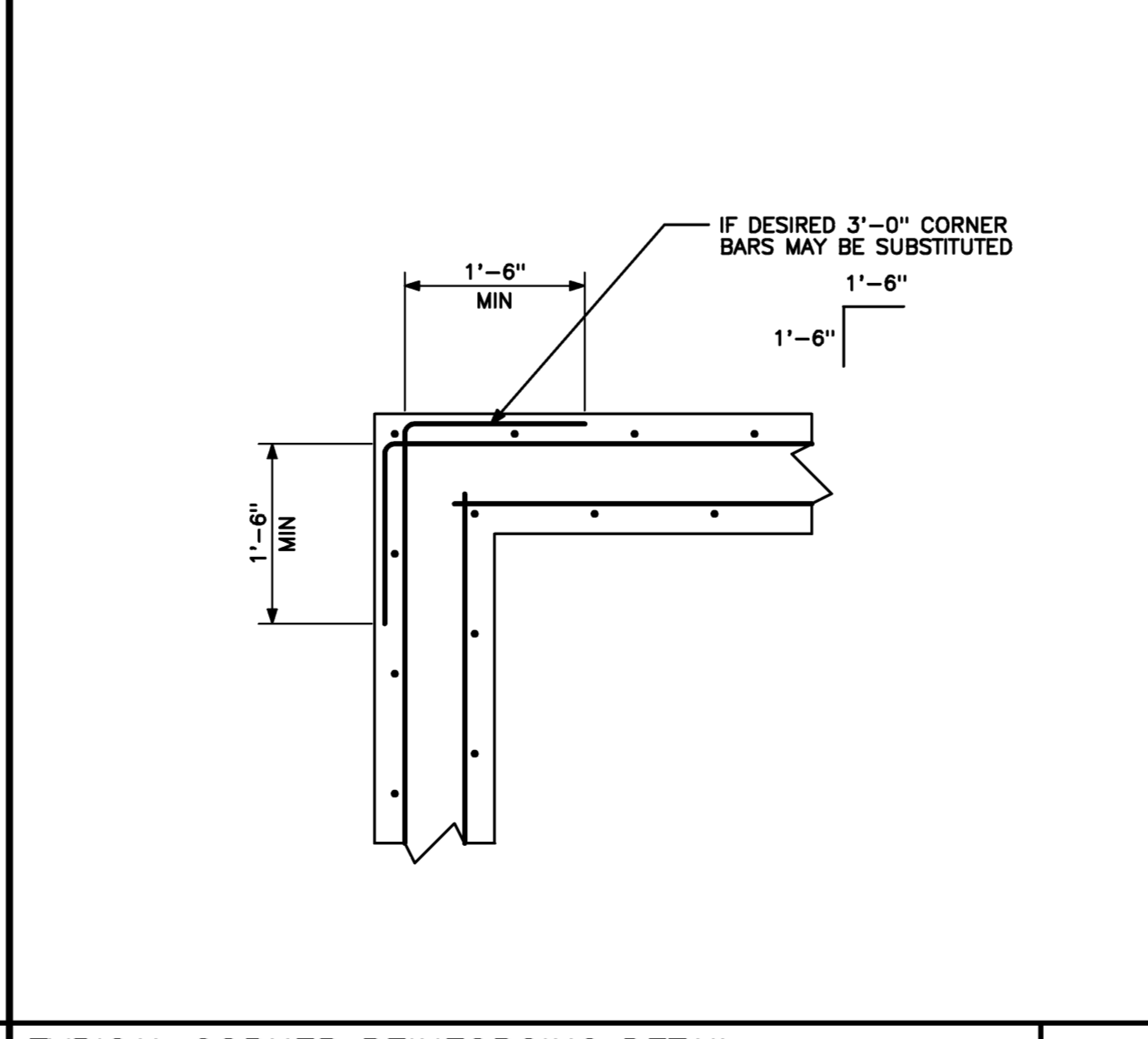
**TYPICAL SLAB-ON-GRADE CONTROL/CONSTRUCTION JOINT DETAIL**  
NO SCALE REF: NA



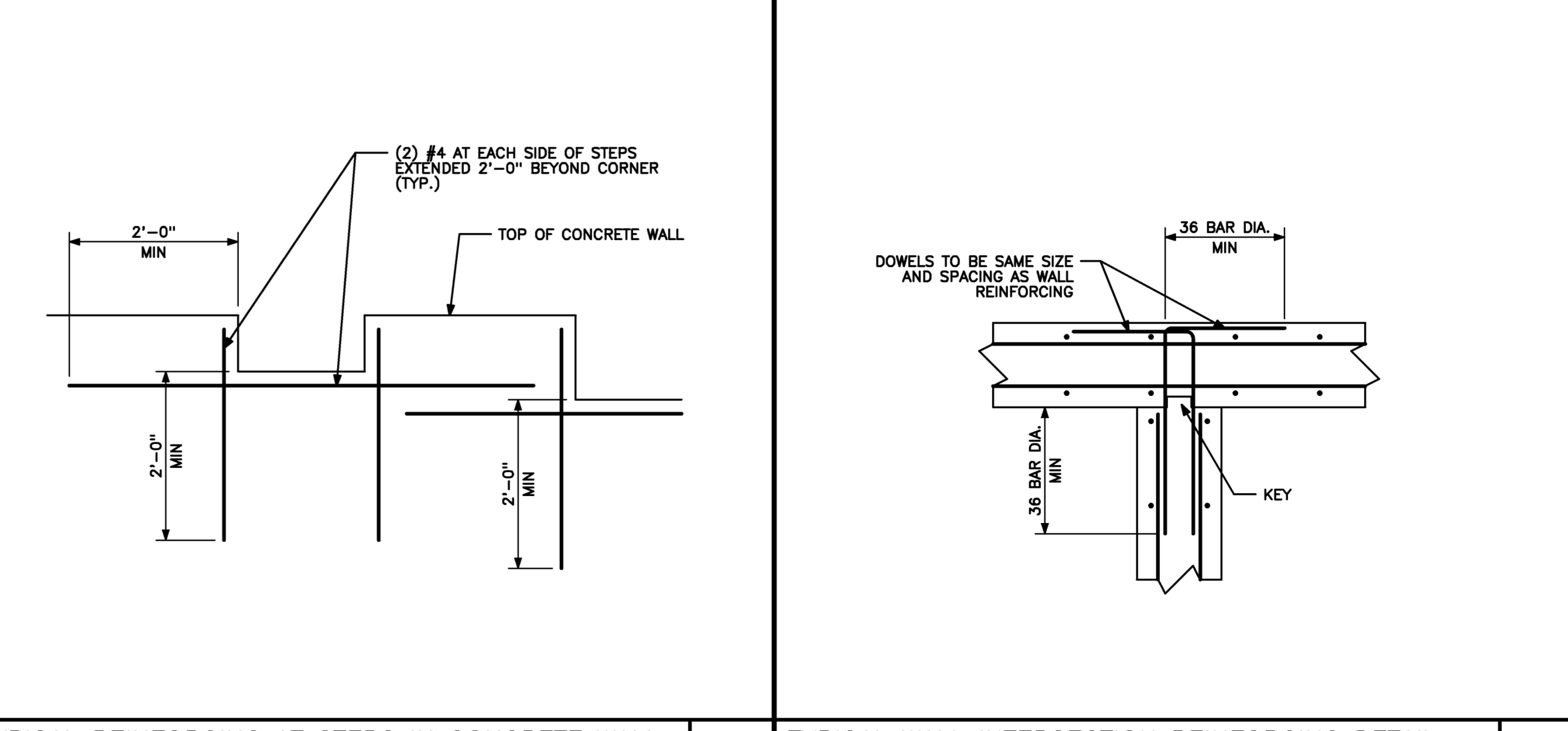
**SECTION**  
1/2" = 1'-0" REF: S05.1



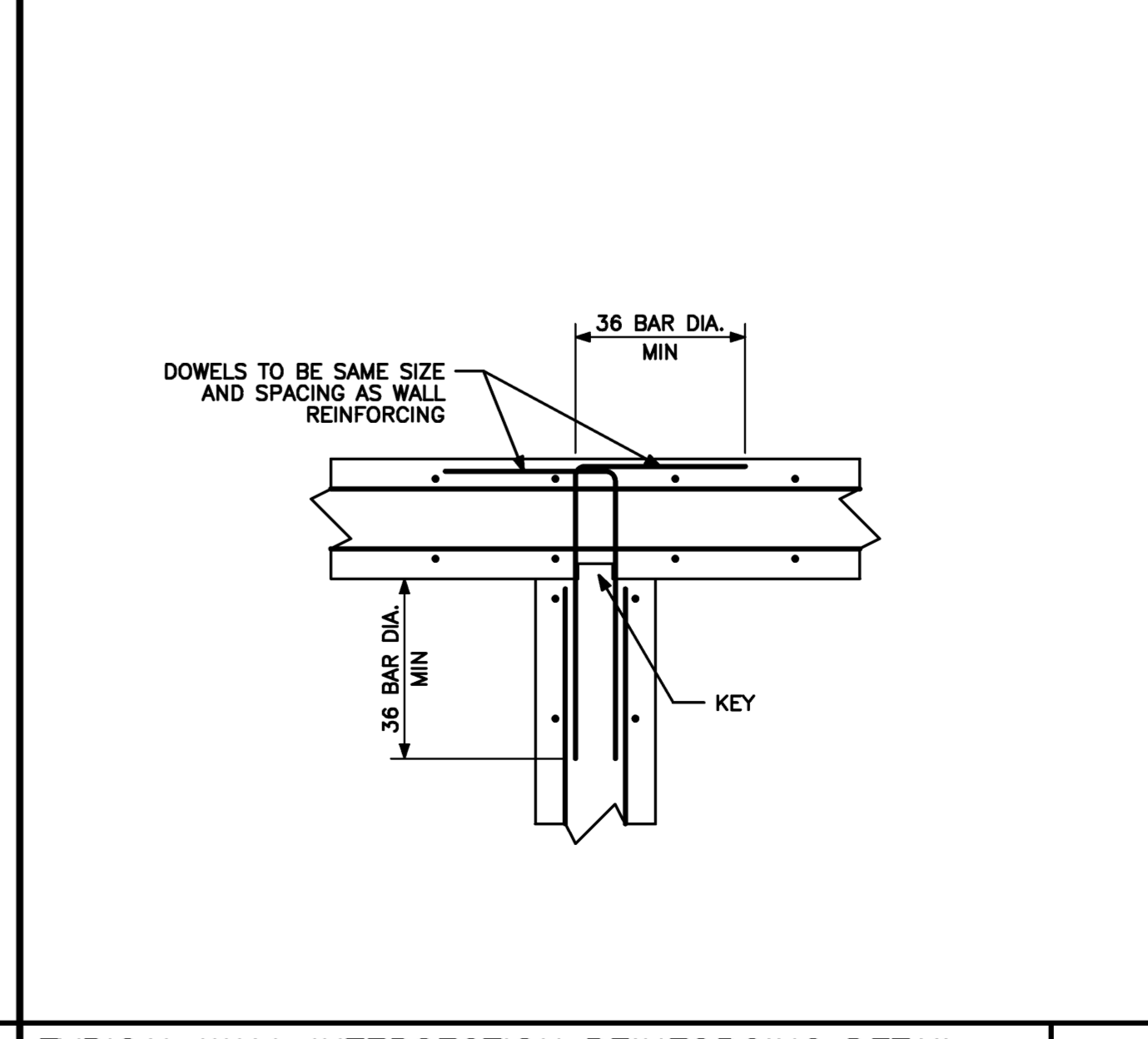
**PILE LAYOUT AT ELEVATOR PIT**  
1/4" = 1'-0" REF: S05.1



**TYPICAL CORNER REINFORCING DETAIL**  
NO SCALE REF: NA



**TYPICAL REINFORCING AT STEPS IN CONCRETE WALL**  
NO SCALE REF: NA



**TYPICAL WALL INTERSECTION REINFORCING DETAIL**  
NO SCALE REF: NA

CONSTRUCTION MANAGER:  
**CONSIGLI**  
44 Middle Street  
Portland, Maine 04101  
Phone 207-773-3000  
Fax 207-773-2800

SITE/CIVIL ENGINEER:  
**CONSIGLI**  
41 Hutchins Drive  
Portland, Maine 04102  
Phone 800-6428-4262  
Fax 207-774-4633

Architects + Engineers:  
**HARRIMAN**  
123 Middle Street  
Portland, Maine 04101  
207.775.0053  
207.775.0460  
www.harriman.com  
c 2008

Project Title:  
**BAYCO LLC. BAYSIDE DEVELOPMENT**  
PORTLAND, MAINE

HA Project No. **08576**

Key Plan:  
Future Building, Parking Garage, Office Building

Issue Dates:

01-07-09	100% SITE ENABLING PACKAGE
12-19-08	90% SITE ENABLING PACKAGE

Mark Date Description

Drawing Status:

Drawing Title:  
**FOUNDATION DETAILS**

PA / PE: **BKB** Drawn By: **MRM**

Drawing Number:  
**S50.1**