

NOTES:

- ALL BASE PLATES TO BE ASTM A36 STEEL UNLESS NOTED (\*) ON PLAN. THESE PLATES SHALL BE ASTM A572 GR. 50 (F<sub>y</sub> = 50 KSI)
- ALL ANCHOR RODS SHALL BE PLACED WITH TEMPLATES PRIOR TO PLACEMENT OF CONCRETE. ANCHOR RODS MAY NOT BE INSERTED AFTER CONCRETE IS PLACED.
- FOR HEADED ANCHOR RODS GREATER THAN 12" EQUIV. THREADED ROD W/ A STANDARD NUT IS ACCEPTABLE. NUT SHALL BE TACK WELDED TO ROD PRIOR TO PLACEMENT. SEE A3/S05.1.
- G.C. SHALL SURVEY ALL ANCHOR ROD PLACEMENTS PRIOR TO STEEL ERECTION. ANY DISCREPANCIES SHALL BE REPORTED TO STRUCTURAL ENGINEER.

01-07-09	100% SITE ENABLING PACKAGE
Mark	Date
Issue Dates	Description

Drawing Status

Drawing Title  
**ANCHOR ROD/  
 BASEPLATE  
 LAYOUT PLAN**

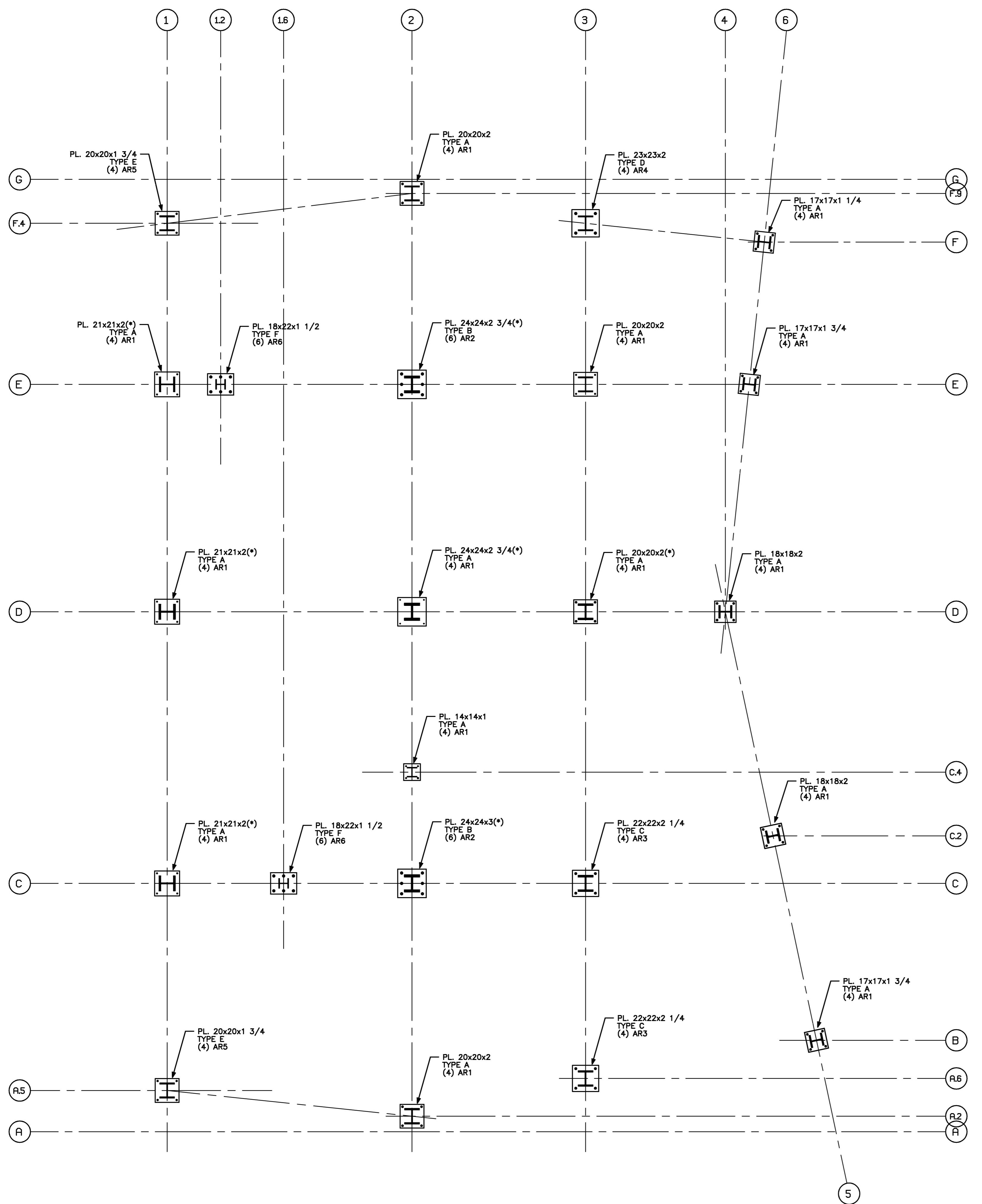
PA / PE: **BKB** Drawn By: **MRM**

Drawing Number

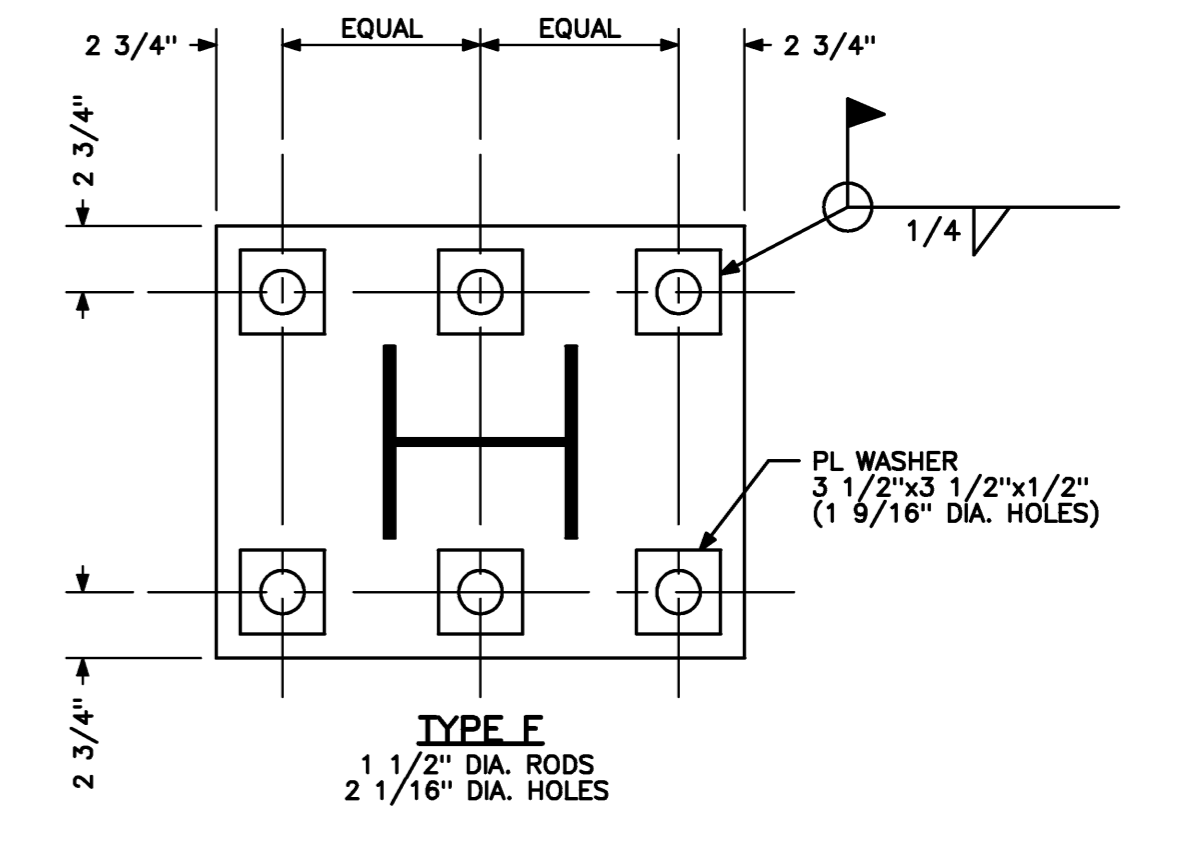
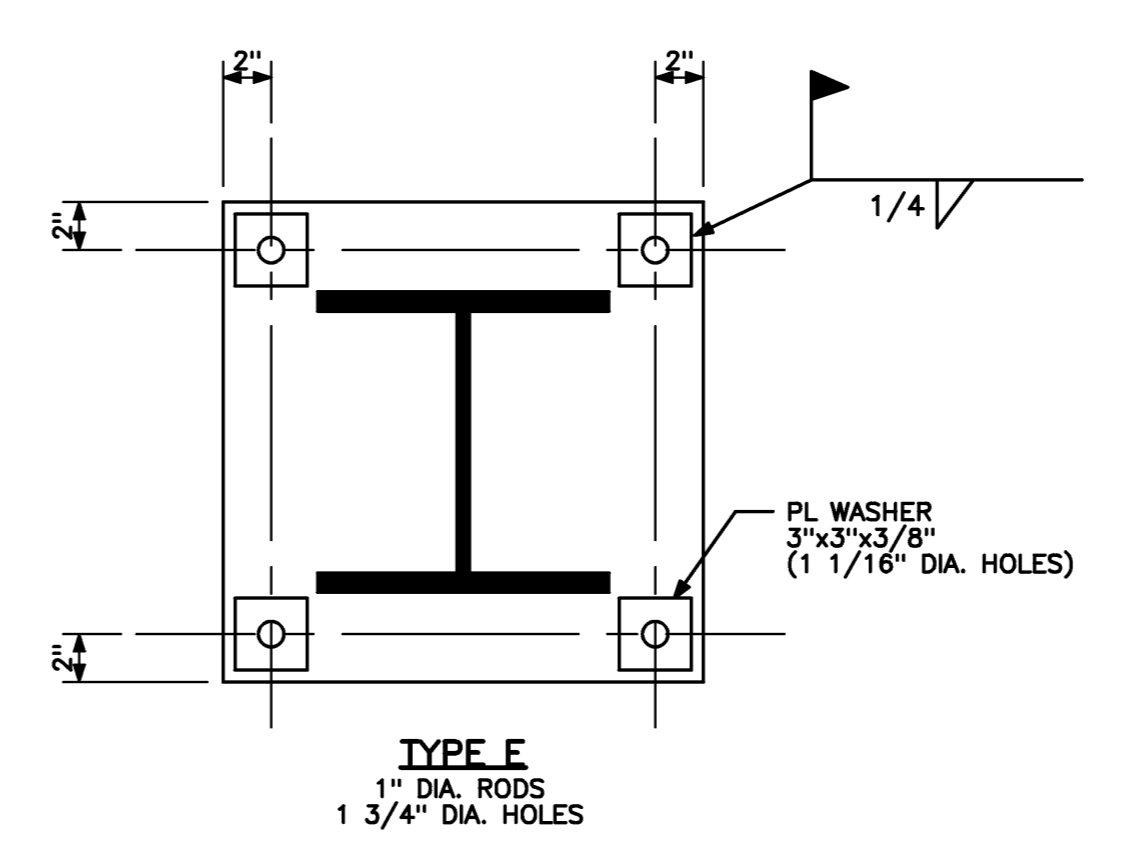
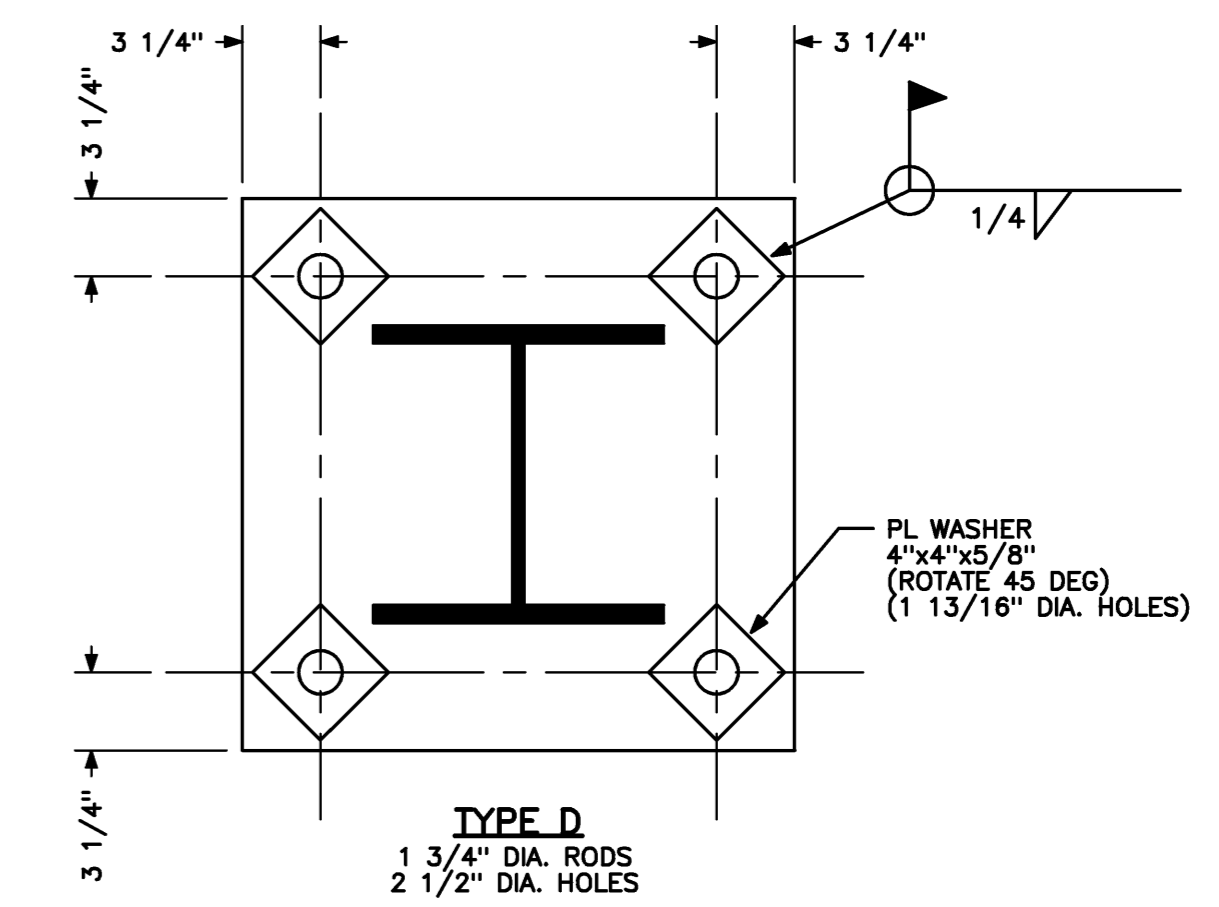
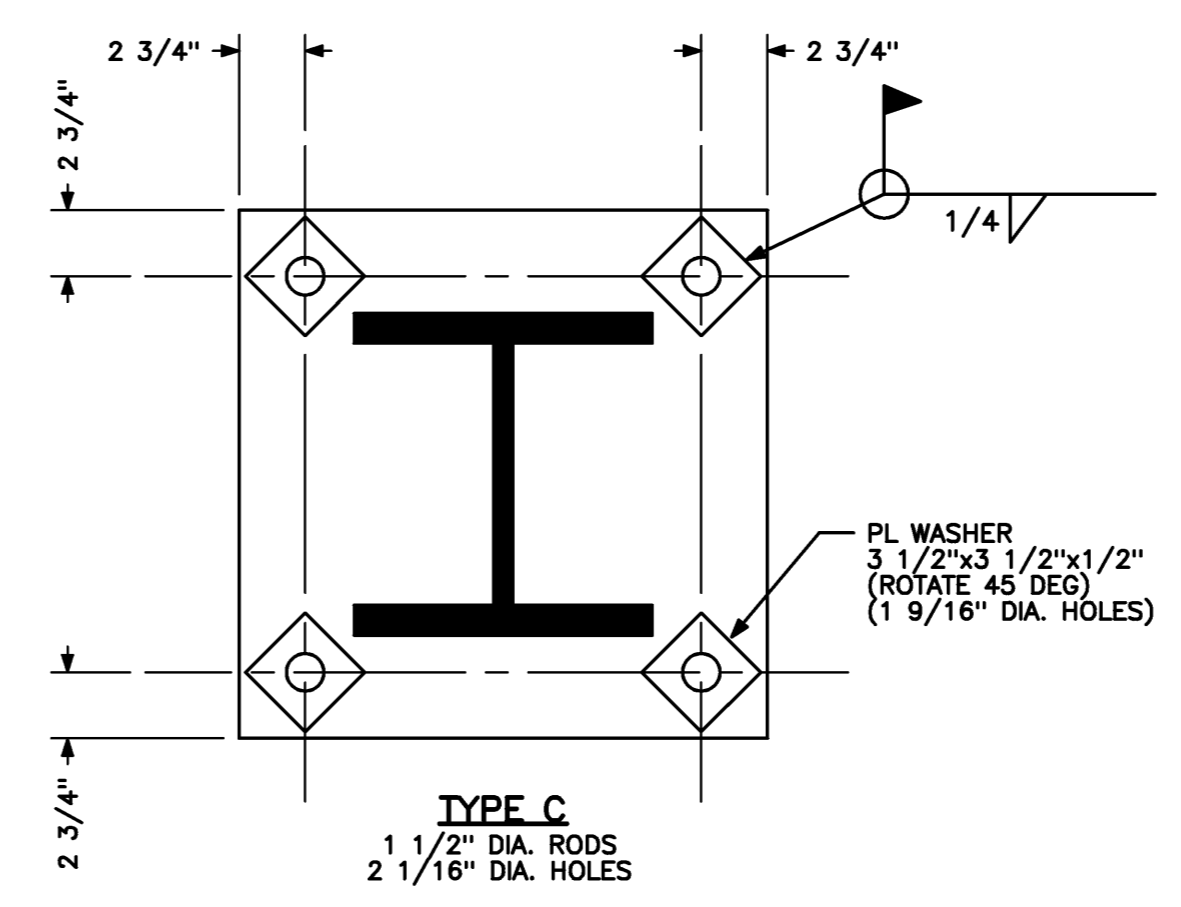
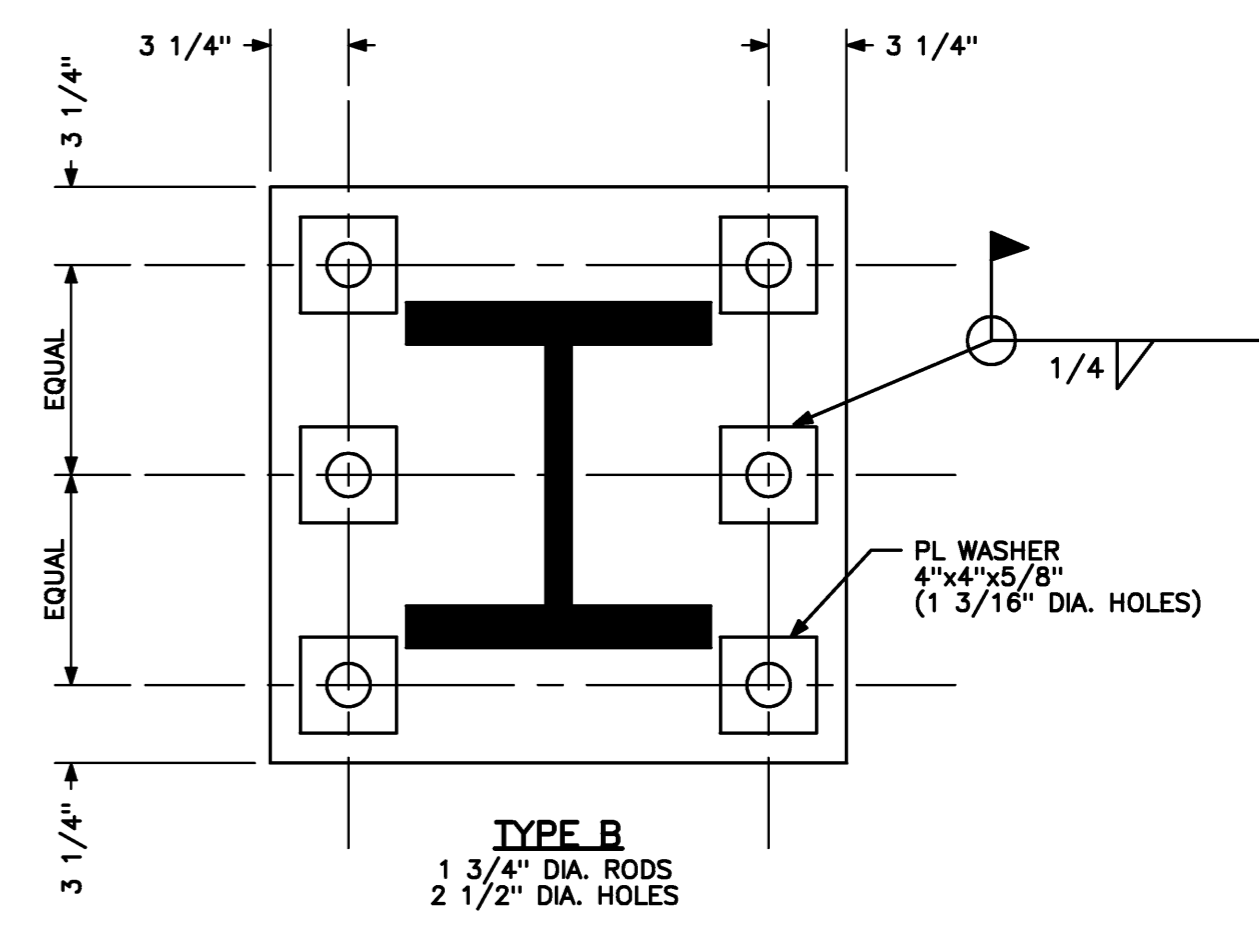
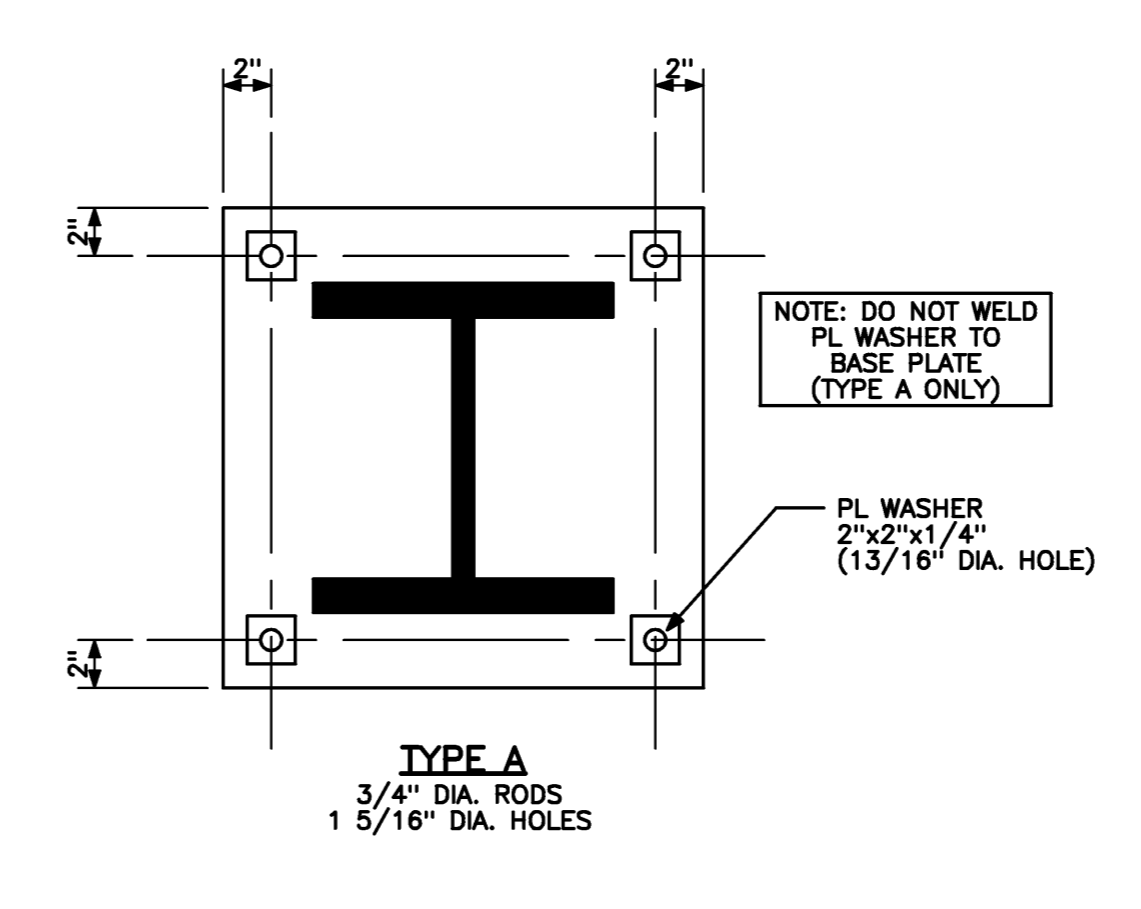
**S05.2**

**ANCHOR ROD SCHEDULE**

DESIGNATION	ROD DIAMETER	MATERIAL	EMBED. DEPTH
AR1	3/4"	F1554 GR. 36	0'-9"
AR2	1 3/4"	F1554 GR. 55	1'-6"
AR3	1 1/2"	F1554 GR. 36	1'-0"
AR4	1 3/4"	F1554 GR. 36	1'-4"
AR5	1"	F1554 GR. 36	1'-0"
AR6	1 1/2"	F1554 GR. 36	3'-0"



**ANCHOR ROD/BASE PLATE LAYOUT**  
 1/8" = 1'-0" REF: NA **A2**



**BASE PLATE DETAILS**  
 1 1/2" = 1'-0" REF: A2/S05.2 **A1**