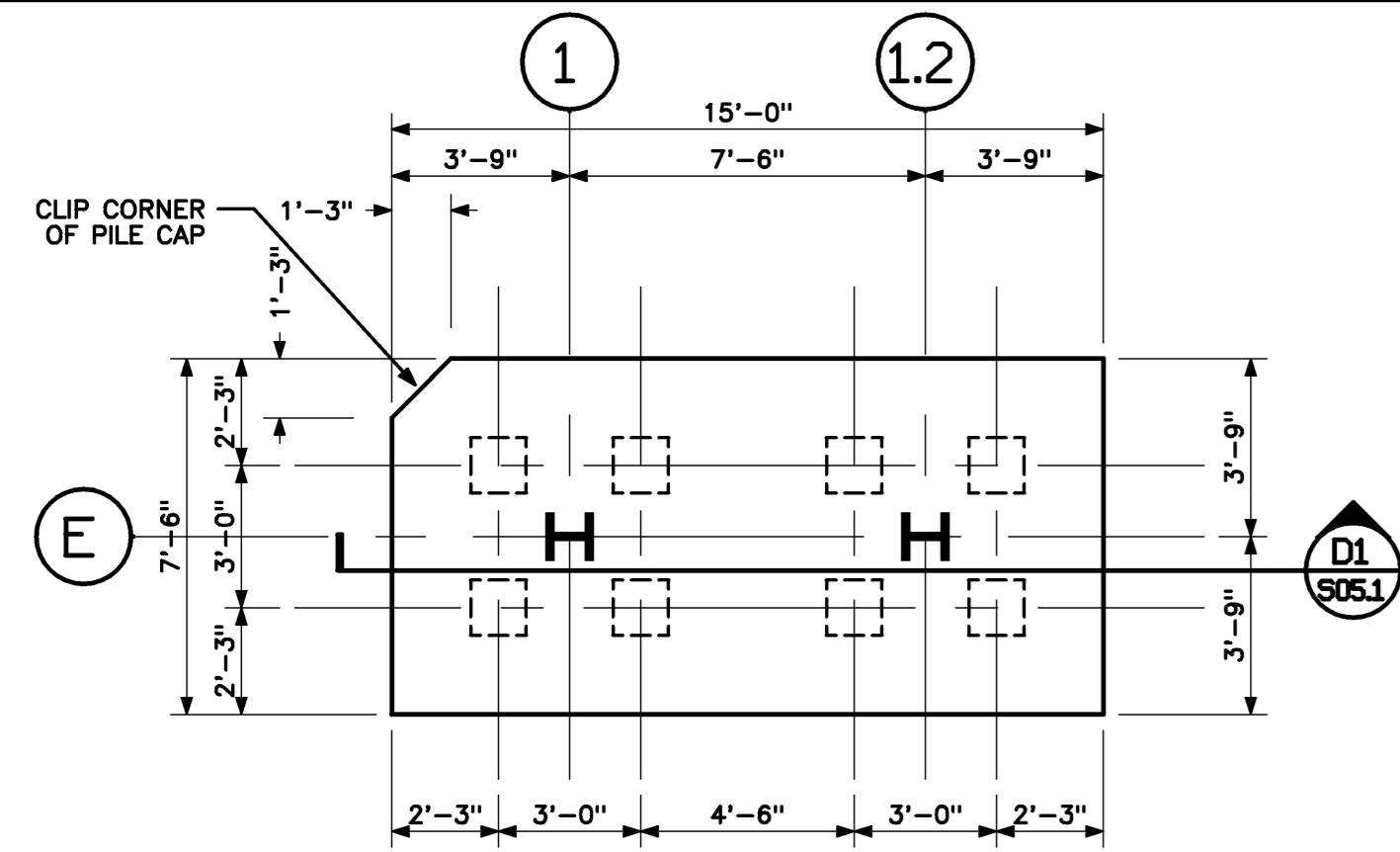
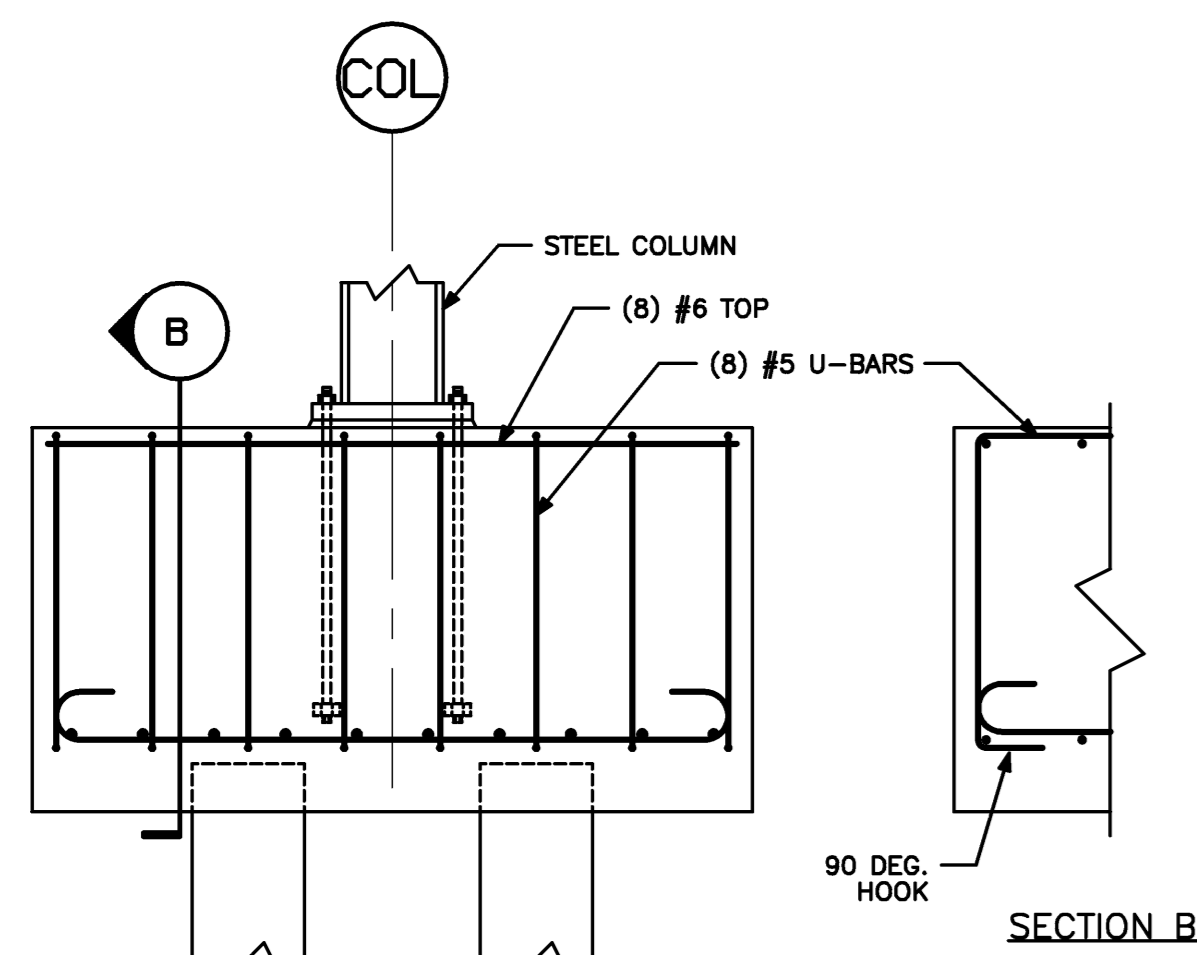


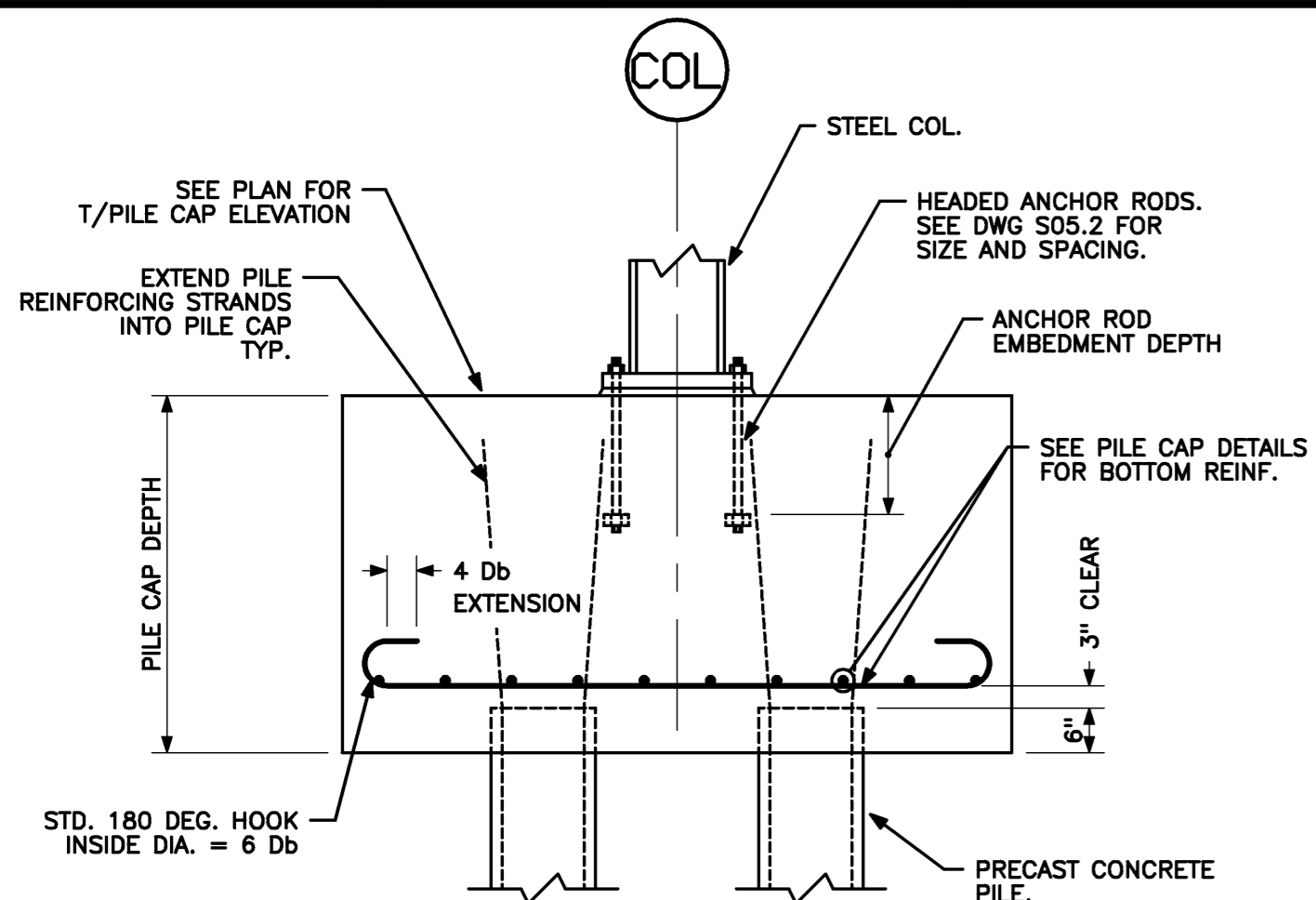
SECTION AT PC8
1/4" = 1'-0" REF: C1/S05.1 **D1**



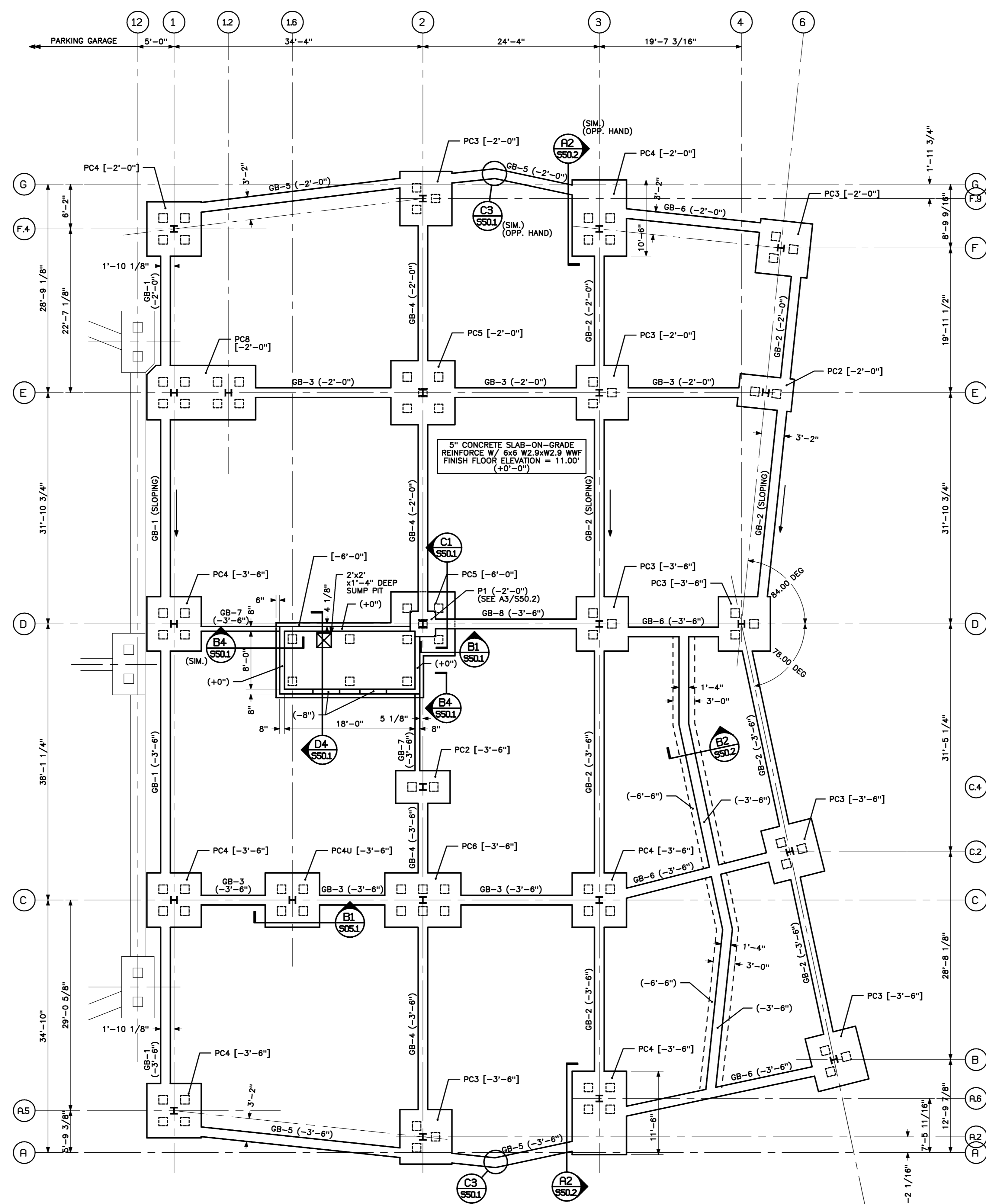
PLAN AT PILE CAP PC8
1/4" = 1'-0" REF: A2/S05.1 **C1**



SECTION AT PC4U
1/2" = 1'-0" REF: A2/S05.1 **B1**



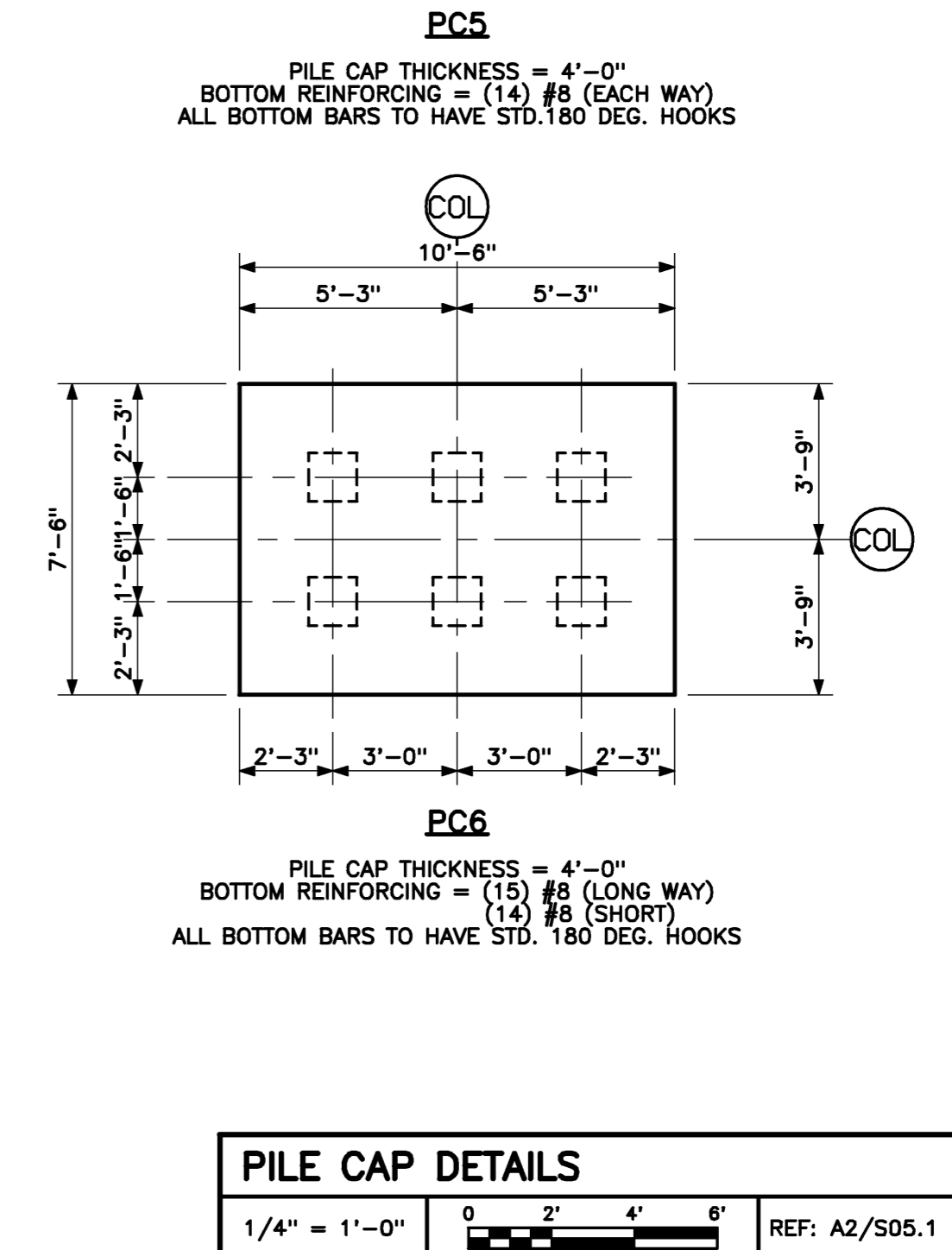
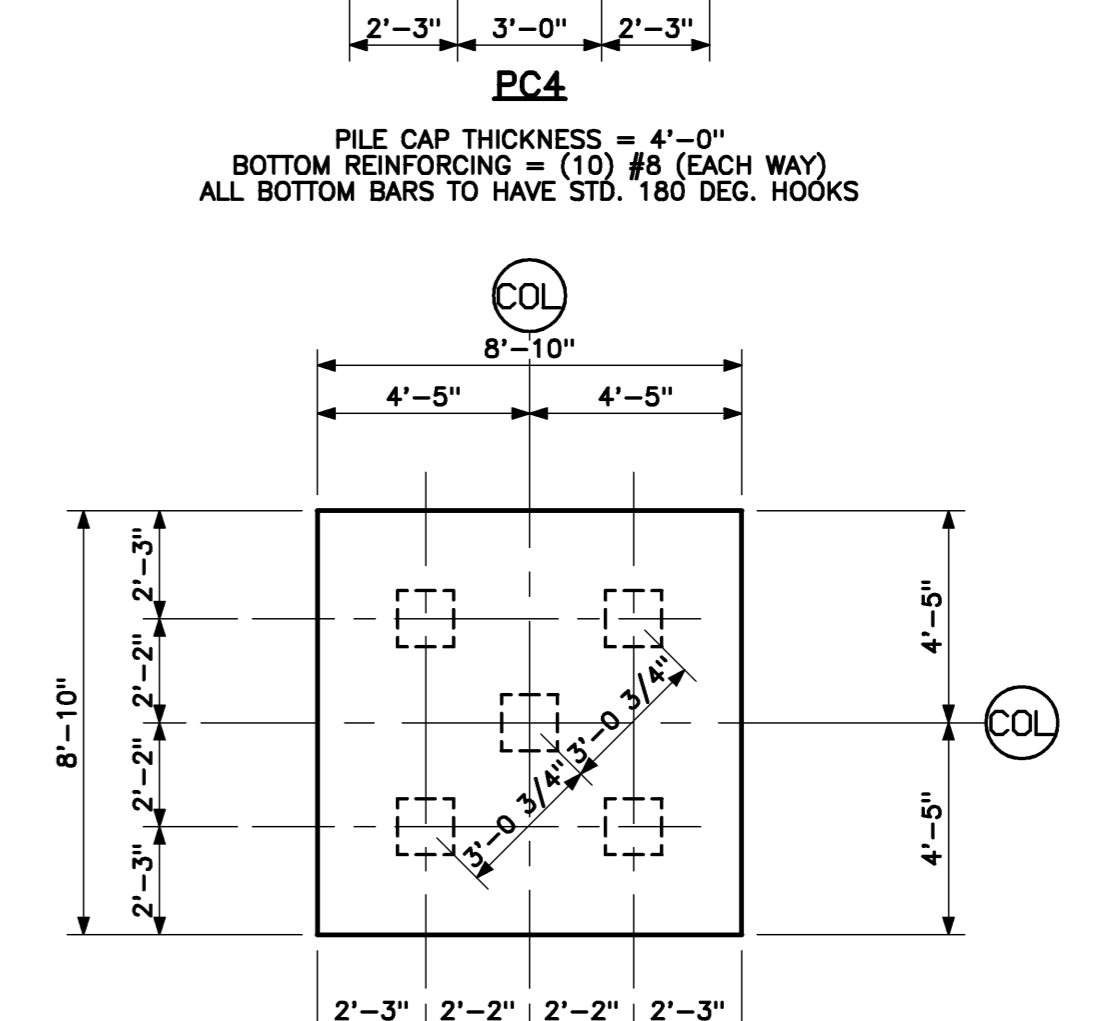
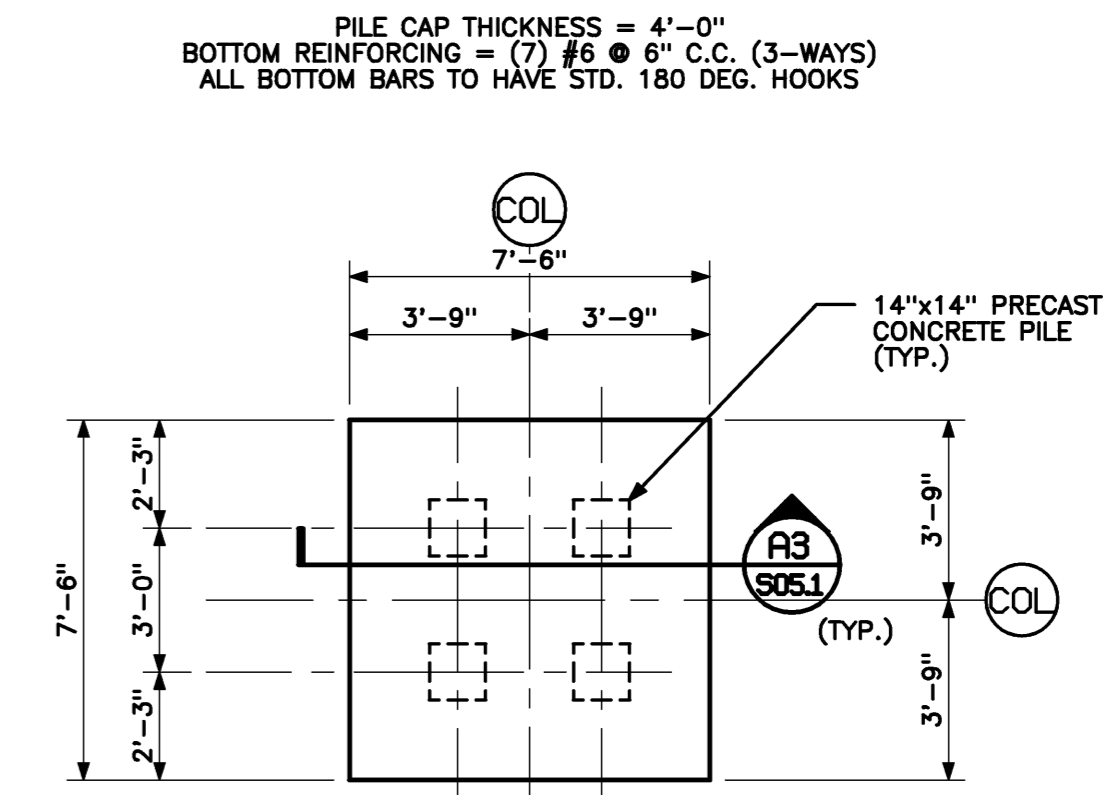
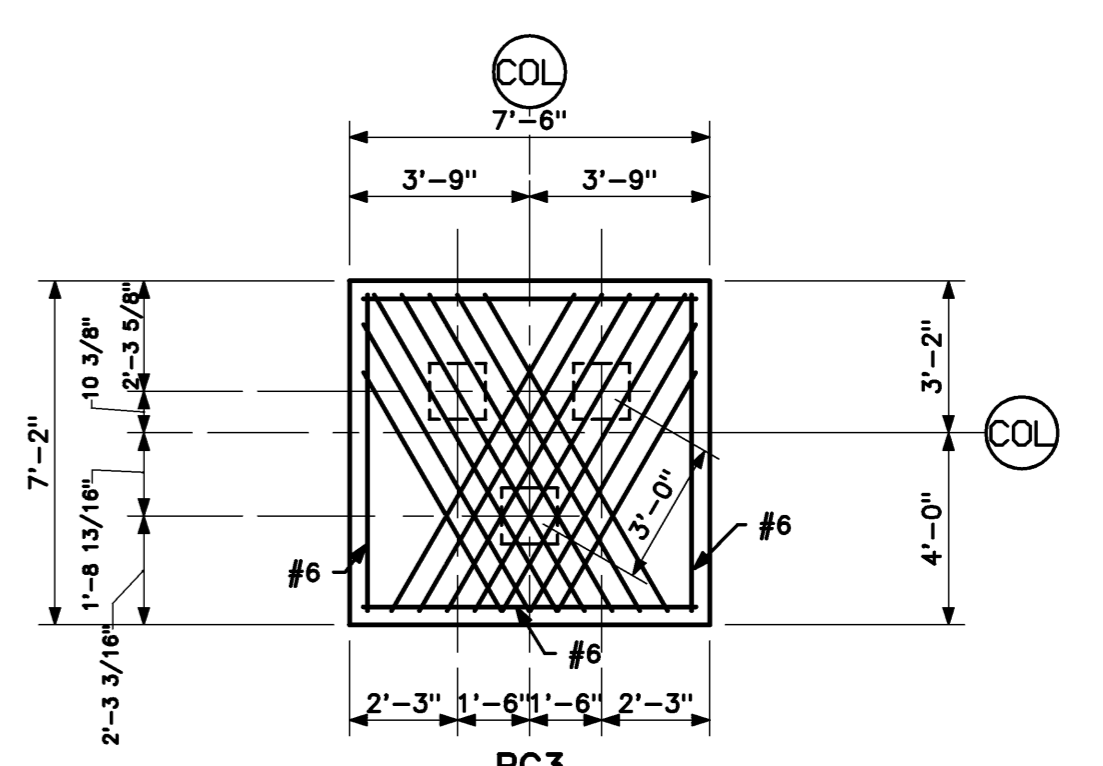
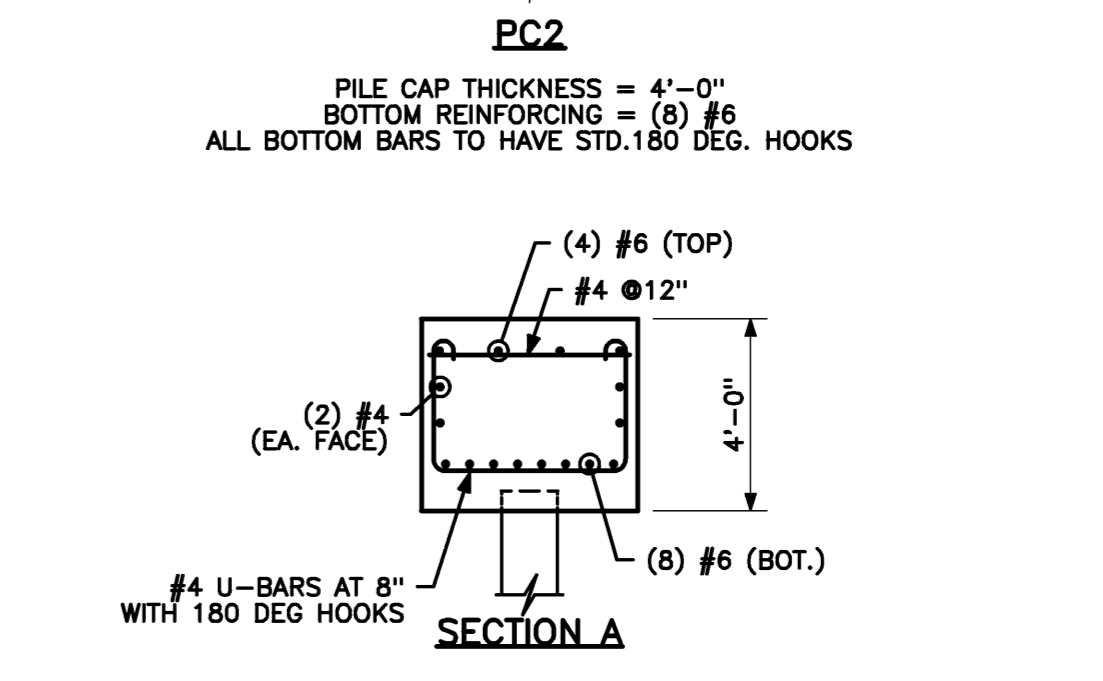
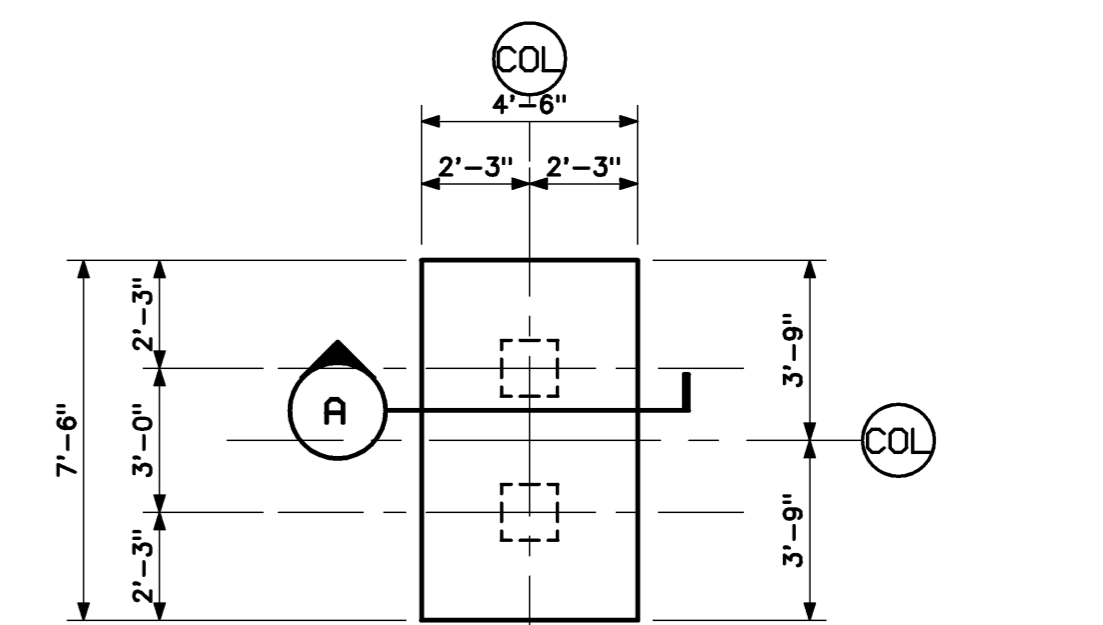
TYPICAL PILECAP SECTION
1/2" = 1'-0" REF: A2/S05.1 **A3**



GRADE BEAM SCHEDULE								
MARK	SIZE		TOP BARS (CONT.) (LAP LENGTH)	TOP BARS (ADD'L) (SEE NOTE)	BOT BARS	STIRRUPS/ VERT BARS	HORIZ. SIDE BARS (EACH FACE)	NOTES
	B	H						
GB-1	1'-4"	4'-0"	(2) #6 (48")	(3) #6	(3) #6	#4 AT 22" O.C.	(5) #5 (30")	
GB-2	1'-4"	4'-0"	(2) #6 (48")	(2) #6	(3) #6	#4 AT 22" O.C.	(5) #5 (30")	
GB-3	1'-4"	4'-0"	(2) #6 (48")	(2) #6	(2) #6	#4 AT 22" O.C.	(5) #5 (30")	
GB-4	1'-4"	4'-0"	(2) #6 (48")	(1) #6	(2) #6	#4 AT 22" O.C.	(5) #5 (30")	
GB-5	1'-4"	4'-0"	(2) #6 (48")	(3) #6	(4) #6	#4 AT 12" O.C.	(5) #5 (30")	
GB-6	1'-4"	4'-0"	(2) #6 (48")	(3) #6	(3) #6	#4 AT 22" O.C.	(5) #5 (30")	
GB-7	8"	2'-6"	(2) #6		(2) #6	#4 AT 12" O.C.	(3) #5	
GB-8	1'-4"	2'-6"	(3) #6		(3) #6	#4 AT 12" O.C.	(3) #5	

NOTE: SEE TYPICAL GRADE BEAM DETAIL D3/S05.1 FOR ADDITIONAL REBAR INFORMATION

PILE CAP/GRADE BEAM PLAN
1/8" = 1'-0" REF: S05.1 **A2**



PILE CAP DETAILS
1/4" = 1'-0" REF: A2/S05.1 **A1**

CONSTRUCTION MANAGER:
CONSIGLI
41 Hutchins Drive
Portland, Maine 04102
Phone 207-773-3000
Fax 207-773-2800

SITE/CIVIL ENGINEER:
CONSIGLI
41 Hutchins Drive
Portland, Maine 04102
Phone 207-773-3000
Fax 207-773-2800

84 Middle Street
Portland, Maine 04101
Phone 207-773-3000
Fax 207-773-2800

95 Cedar Street, Suite 100
Portland, Maine 04102
Phone 800-9426-4262
Phone 800-985-7987
Fax 401-273-0087

HARRIMAN
Architects + Engineers
Auburn Business Park
46 Veterans Drive
Auburn, Maine 04210
207-784-3100 ext.
207-782-3017 fax

123 Middle Street
Portland, Maine 04101
207-775-0053 ext.
207-775-0460 fax
www.harriman.com
© 2008

Project Title
BAYCO LLC. BAYSIDE
PORTLAND, MAINE

HA Project No. **08576**

Key Plan
Future Building Parking Garage Office Building

NOTES:
1. TOP OF CONCRETE ELEVATIONS ARE NOTED (+/-) FROM FINISH FIRST FLOOR ELEVATION 11.00'
2. (-8") INDICATES TOP OF CONCRETE ELEVATION
3. [-2'-0"] INDICATES TOP OF PILE CAP ELEVATION
4. PC4 - INDICATES PILE CAP. SEE A1/S05.1 FOR DIMENSIONS AND REINFORCING
5. [] INDICATES 14"x14" PRECAST CONCRETE PILE. NET DESIGN CAPACITY = 125 TON (250 KIPS)
6. GB-1 INDICATES CONCRETE GRADE BEAM. SEE DWG. S50.1 FOR DETAILS.

Mark	Date	Description
01-07-09		100% SITE ENABLING PACKAGE
12-19-08		90% SITE ENABLING PACKAGE

Issue Dates

Drawing Status

Drawing Title
PILE CAP/ GRADE BEAM PLAN

PA / PE: **BKB** Drawn By: **MRM**

Drawing Number
S05.1