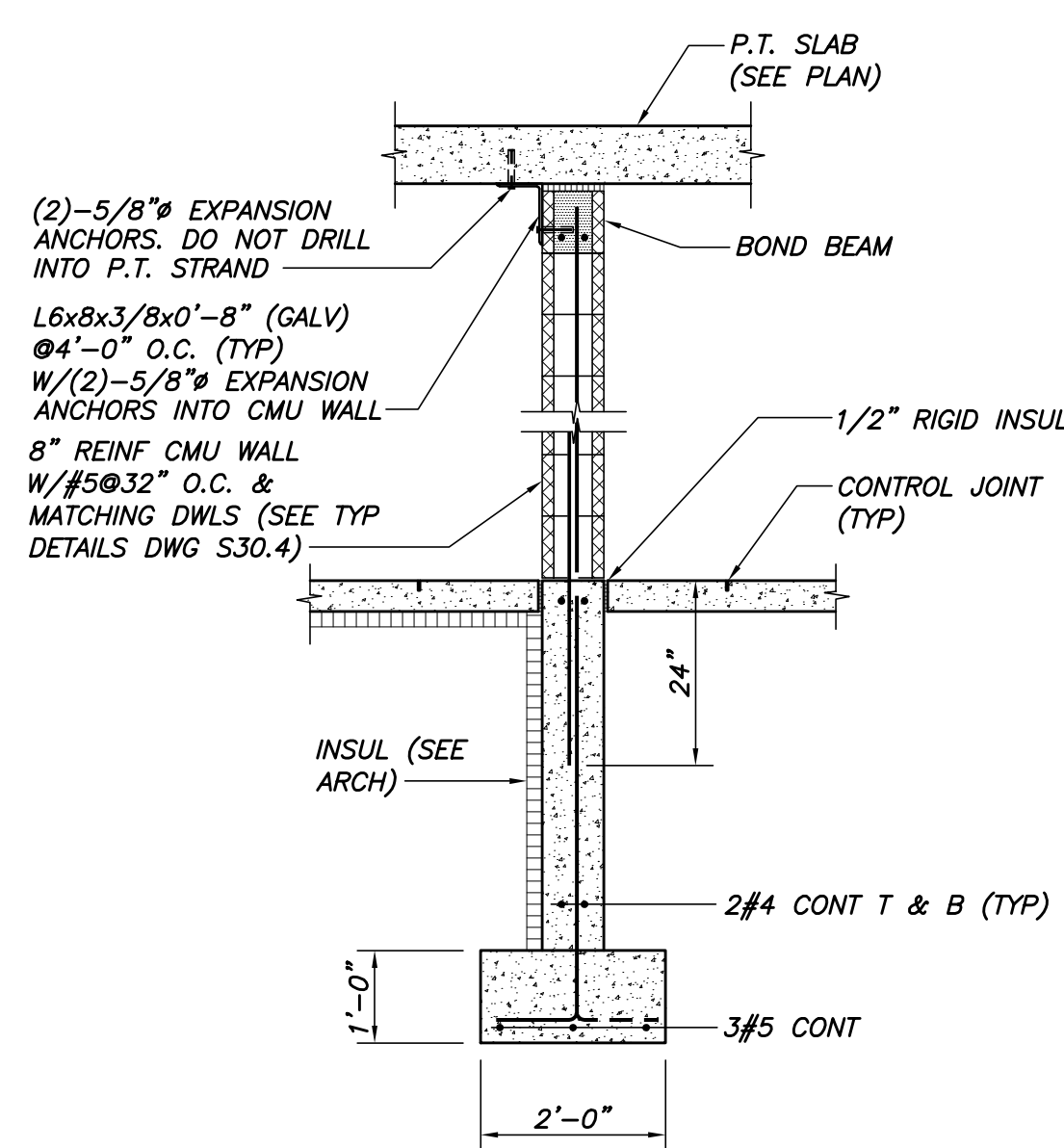
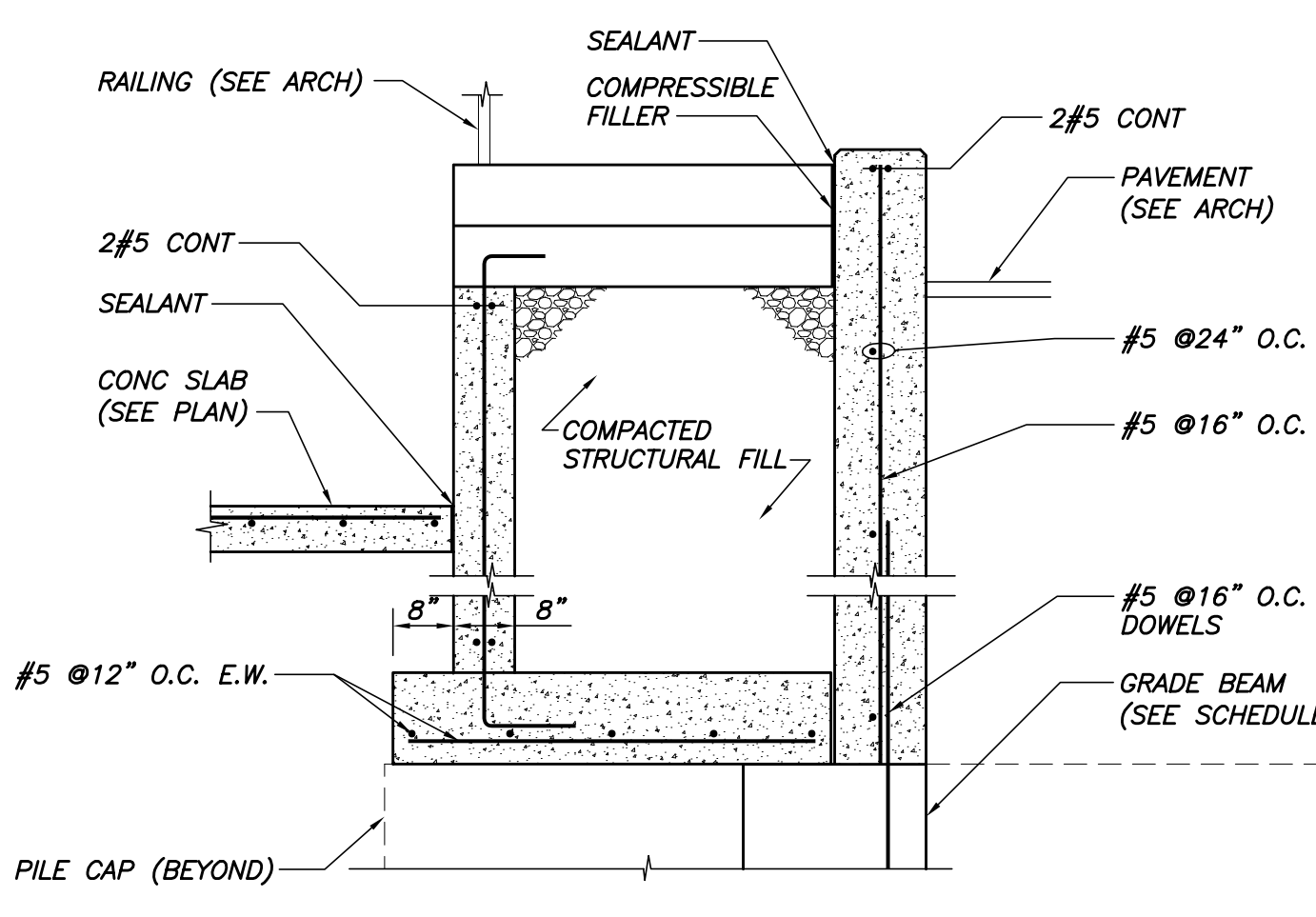


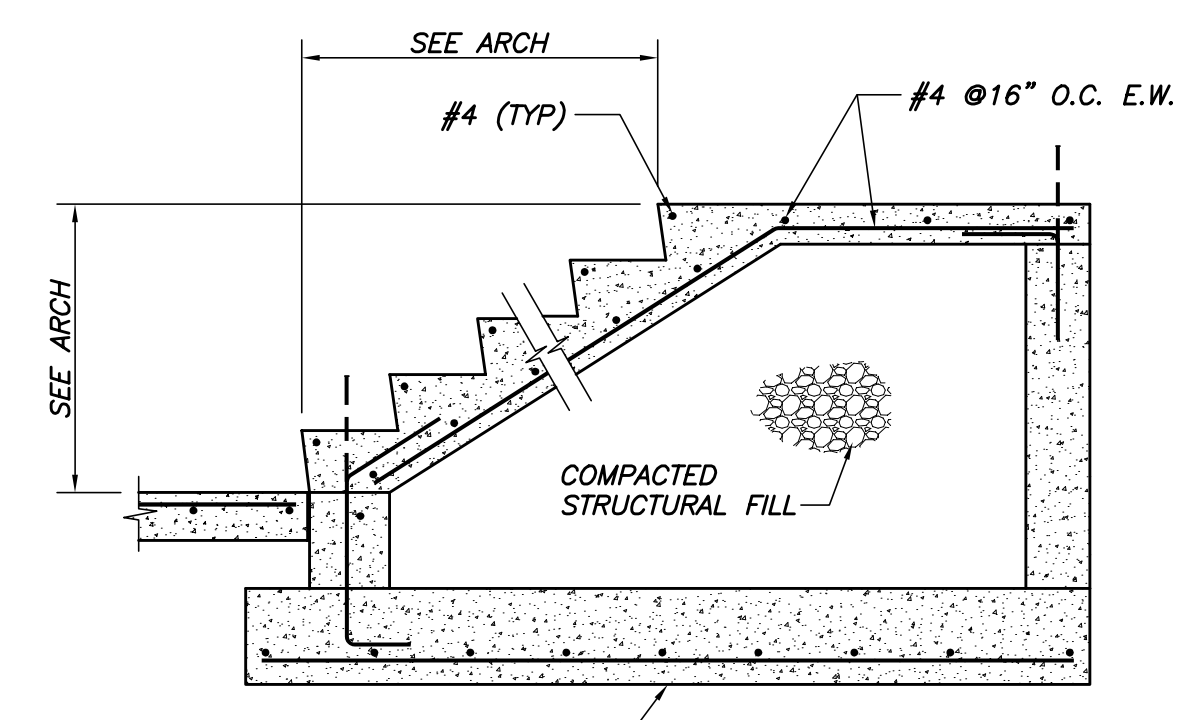
SECTION 1  
1/2"=1'-0"



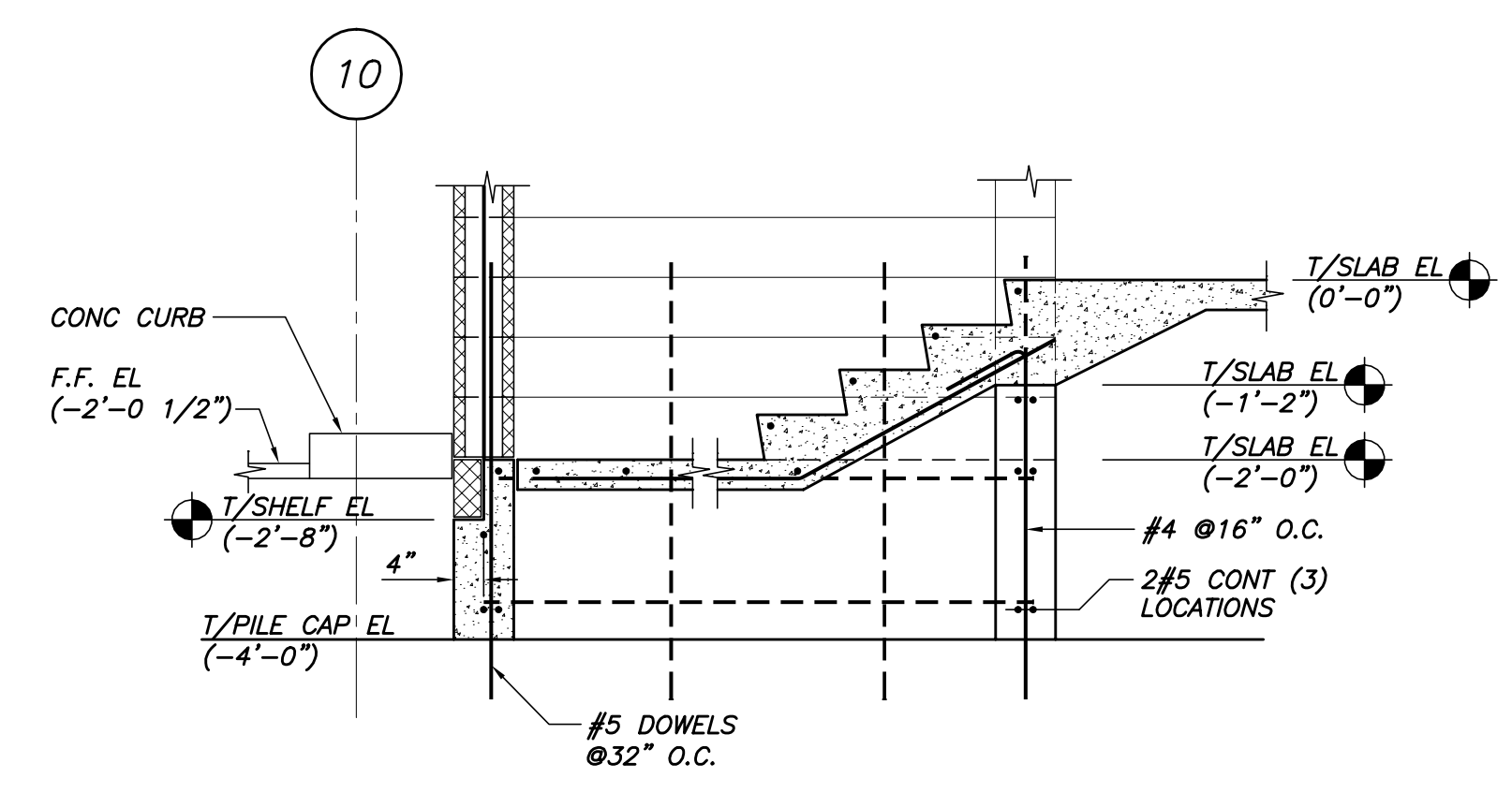
SECTION 2  
1/2"=1'-0"



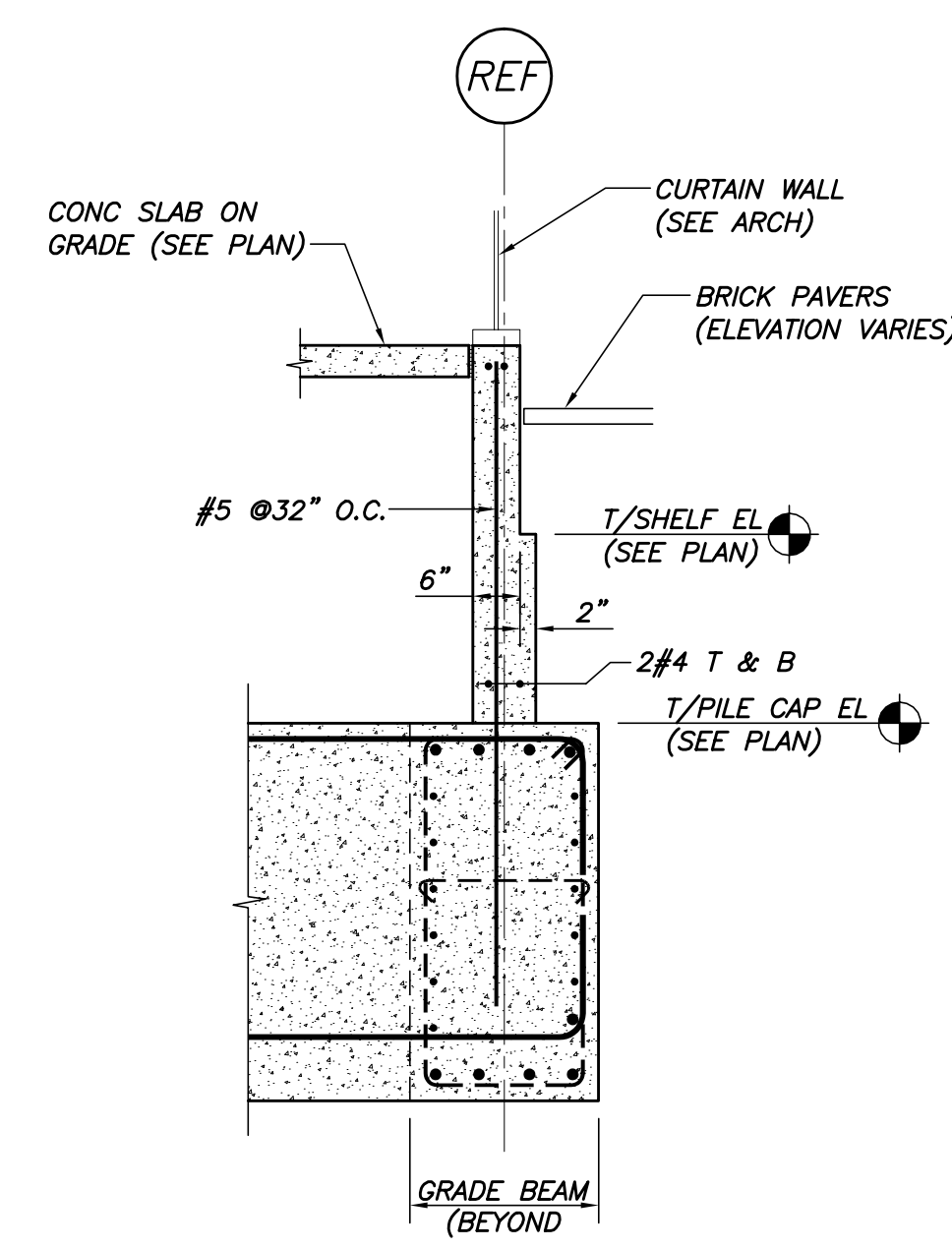
SECTION 3  
1/2"=1'-0"



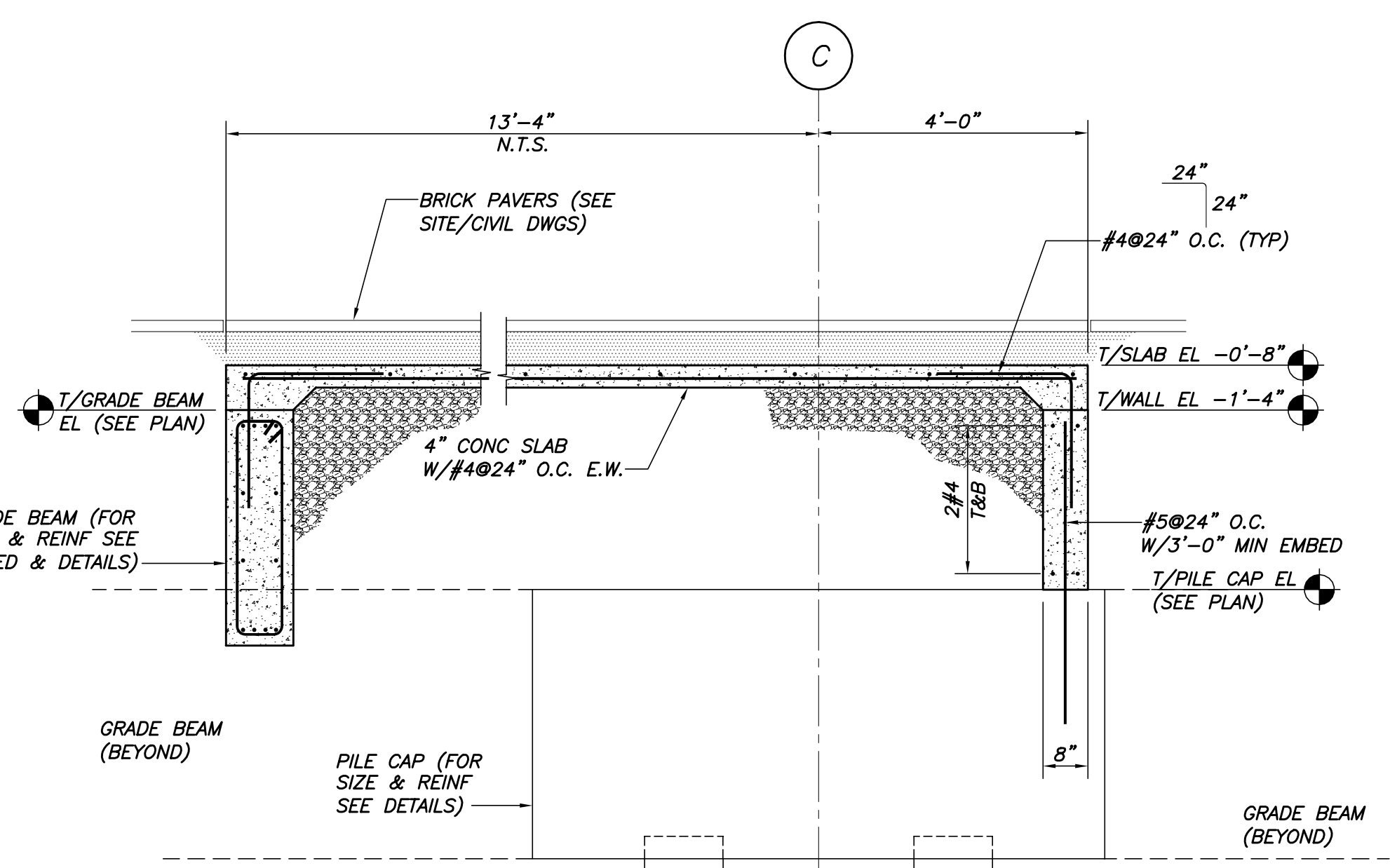
SECTION 4  
1/2"=1'-0"



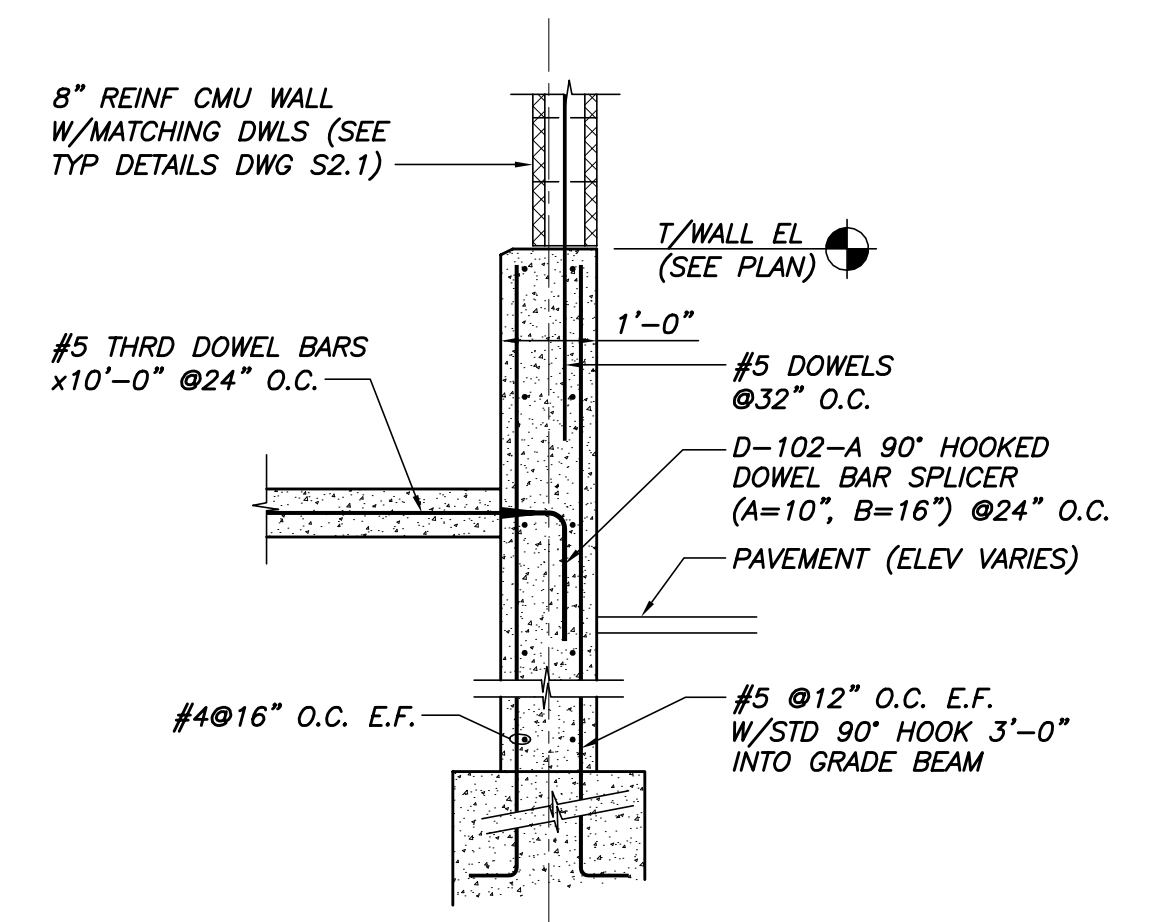
SECTION 5  
1/2"=1'-0"



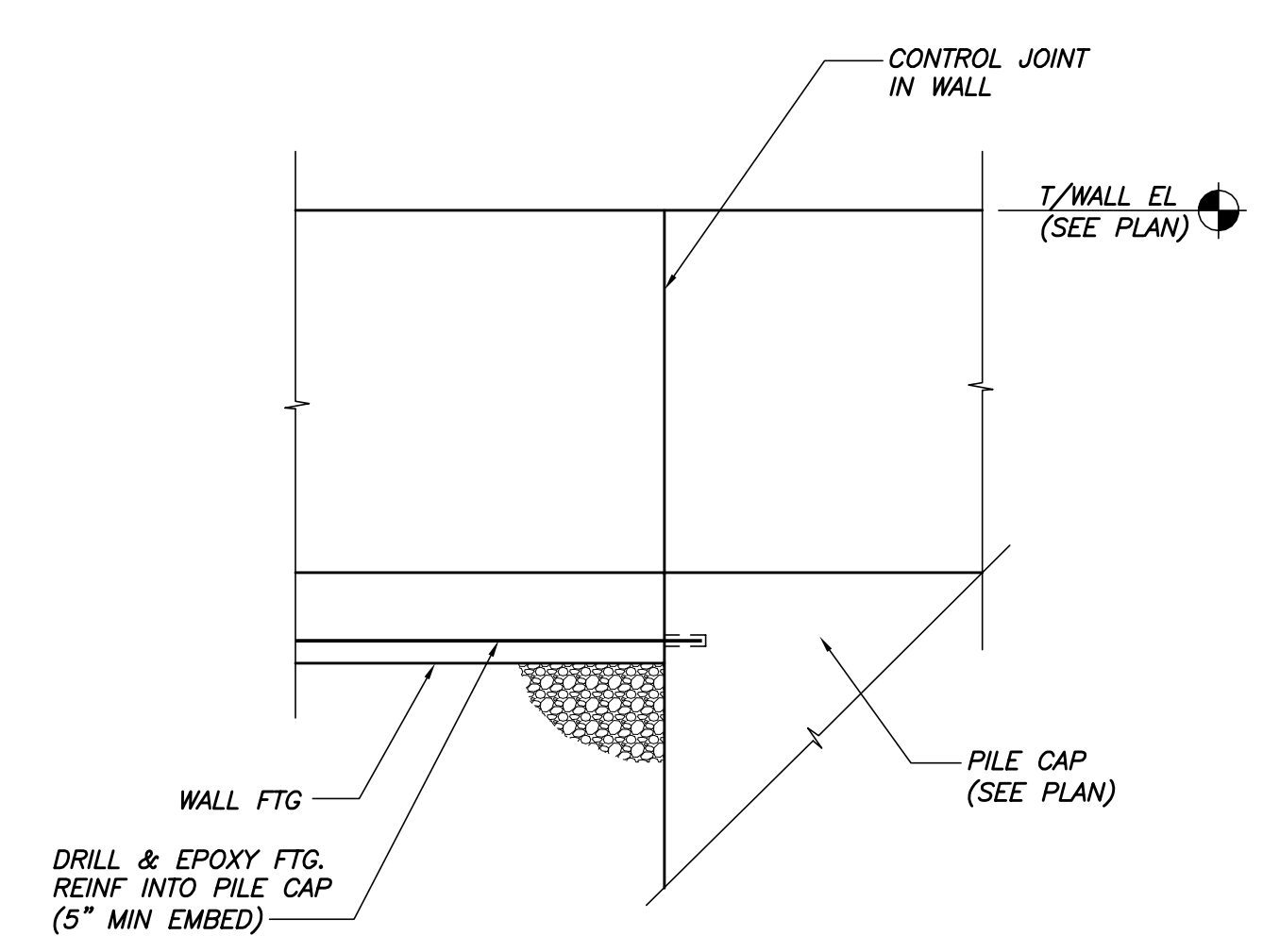
SECTION 6  
1/2"=1'-0"



SECTION 7  
1/2"=1'-0"



SECTION 8  
1/2"=1'-0"



SECTION 9  
1/2"=1'-0"

CONSTRUCTION MANAGER  
**CONSGLI**  
 88 Middle Street  
 Portland, Maine 04102  
 Phone 207.775.3000  
 Fax 207.775.2600

PARKING GARAGE ARCHITECT:  
**SS&H**  
 75 York Street  
 Portland, Maine 04101  
 Phone 207.774.4800  
 Fax 207.428.4850

PARKING GARAGE STRUCTURAL ENGINEER:  
**BECKER**  
 75 York Street  
 Portland, Maine 04101  
 Phone 207.479.3300  
 Fax 207.479.1822

STRUCTURAL ENGINEER:  
**ARRINGTON**  
 45 Middle Street  
 Portland, Maine 04102  
 Phone 207.646.4200  
 Fax 207.774.4600

88 Cedar Street Suite 103  
 Providence, Rhode Island 02903  
 Phone 401.866.7000  
 Fax 401.851.0507

**HARRIMAN**  
 Architects + Engineers  
 Auburn Business Park  
 84 Harriman Drive  
 Auburn, Maine 04210  
 207.784.5100 Ext. 200  
 207.782.3017 fax  
 123 Middle Street  
 Portland, Maine 04101  
 207.775.0653 ext  
 207.775.0460 fax  
 www.harriman.com  
 © 2008

Project Title  
**BAYCO LLC  
 BAYSIDE  
 DEVELOPMENT**  
 PORTLAND, MAINE  
**PARKING GARAGE**

Project No. 2008-0040

Key Plan  

 Future Building, Parking Garage, Office Building

General Notes or Legends Here

Mark	Date	Description
1-7-08		100% SITE ENABLING PACKAGE
12-19-08		50% CONSTRUCTION DOCUMENTS
11-26-08		100% DESIGN DEVELOPMENT
10-29-08		50% DESIGN DEVELOPMENT

Drawing Status  
**100% SITE ENABLING PACKAGE**

Drawing Title  
**FOUNDATION SECTIONS & DETAILS**

PA/PE: NJJM Drawn By: APP

Drawing Number  
**GS20.4**

